



NO.	DESCRIPTION	DATE

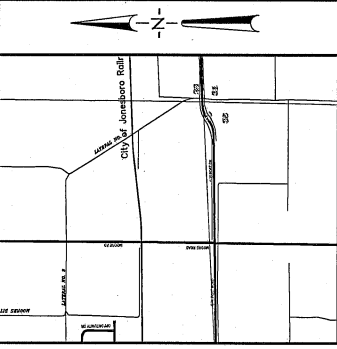
DATE	03/23/2010	DESIGNED BY	JK
CADD FILE	231010.DWG	DRAWN BY	JK
JOB NO.	XXXXXX	CHECKED BY	JK
SHEET	1	TOTAL SHEETS	1

REZONE REQUEST

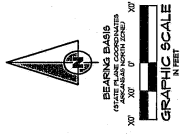
DATE OF INDICATED SURVEY: 3/10/2010

NOTE: TO BE VALUED, COPIES MUST HAVE SURVEYOR'S SEAL WITH LIMITED EXPIRES.

© Copyright 2010, AETLS



VICINITY SKETCH
NOT TO SCALE



- LEGEND**
- BOUNDARY LINE
 - ADJACENT LOT LINE
 - EASEMENT LINE
 - EASEMENT POINT
 - EASEMENT POINT SYMBOL
 - SET BACK FROM PERMITS WITHIN CUP
 - EXISTING FENCE LINE

SURVEYOR'S NOTES

1. THIS BOUNDARY SURVEY AND RECORDS PLAN WAS PREPARED FOR JOHNSBORO CITY.
2. NO PART OF THIS PUBLIC RECORDS HAS BEEN MADE BY THIS SURVEYOR FOR ANY OTHER PURPOSE.
3. THIS SURVEYOR'S LIABILITY IS LIMITED TO THE PROFESSIONAL SERVICES PROVIDED HEREIN AND DOES NOT EXTEND TO ANY OTHER MATTER.

DESCRIPTION

LOT 7 OF CLEARVIEW ESTATES SECOND ADDITION, PHASE II TO THE CITY OF JOHNSBORO, ARKANSAS, AS SHOWN ON S00°19'55" W 714.40' AND N 00°53'19" E 750.81' AND

AND LOT 8 OF CLEARVIEW ESTATES SECOND ADDITION, PHASE II TO THE CITY OF JOHNSBORO, ARKANSAS, AS SHOWN ON S00°19'55" W 714.40' AND N 00°53'19" E 750.81' AND

AND LOT 9 OF CLEARVIEW ESTATES SECOND ADDITION, PHASE II TO THE CITY OF JOHNSBORO, ARKANSAS, AS SHOWN ON S00°19'55" W 714.40' AND N 00°53'19" E 750.81' AND

AND LOT 10 OF CLEARVIEW ESTATES SECOND ADDITION, PHASE II TO THE CITY OF JOHNSBORO, ARKANSAS, AS SHOWN ON S00°19'55" W 714.40' AND N 00°53'19" E 750.81' AND

AND LOT 11 OF CLEARVIEW ESTATES SECOND ADDITION, PHASE II TO THE CITY OF JOHNSBORO, ARKANSAS, AS SHOWN ON S00°19'55" W 714.40' AND N 00°53'19" E 750.81' AND

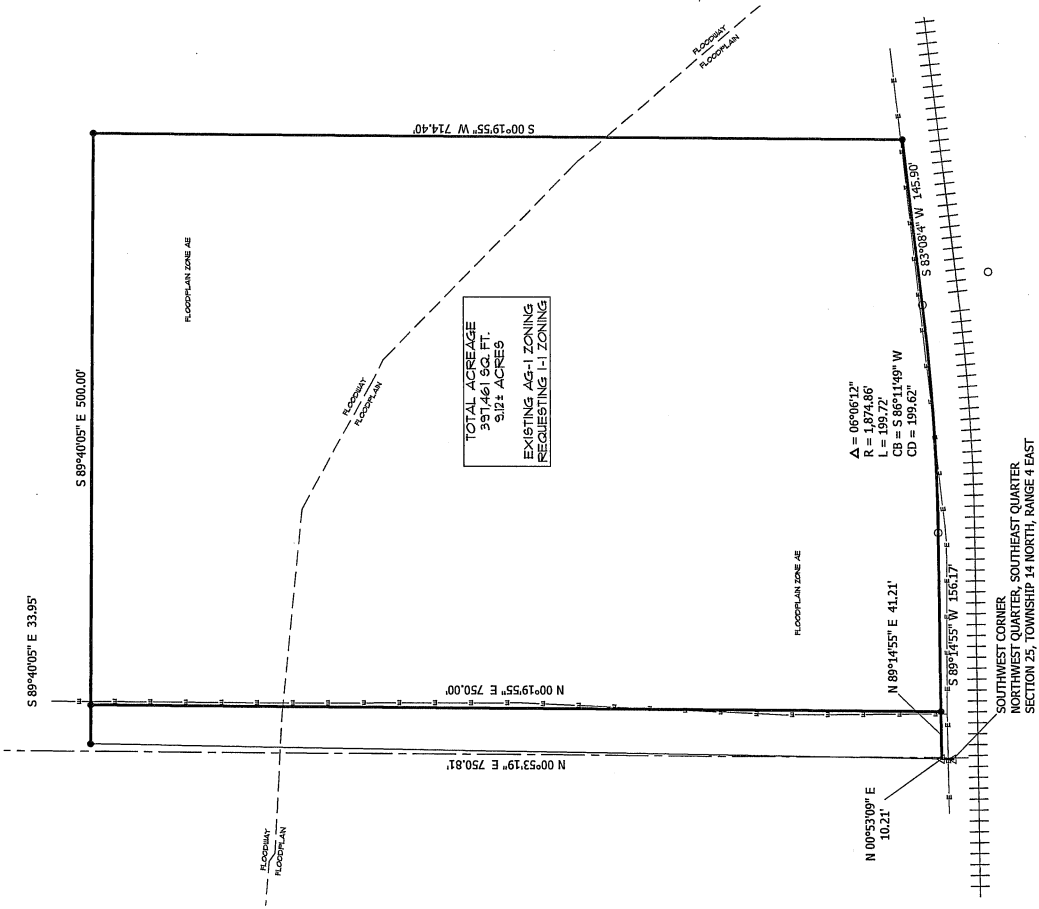
AND LOT 12 OF CLEARVIEW ESTATES SECOND ADDITION, PHASE II TO THE CITY OF JOHNSBORO, ARKANSAS, AS SHOWN ON S00°19'55" W 714.40' AND N 00°53'19" E 750.81' AND

AND LOT 13 OF CLEARVIEW ESTATES SECOND ADDITION, PHASE II TO THE CITY OF JOHNSBORO, ARKANSAS, AS SHOWN ON S00°19'55" W 714.40' AND N 00°53'19" E 750.81' AND

AND LOT 14 OF CLEARVIEW ESTATES SECOND ADDITION, PHASE II TO THE CITY OF JOHNSBORO, ARKANSAS, AS SHOWN ON S00°19'55" W 714.40' AND N 00°53'19" E 750.81' AND

TOTAL ACREAGE
391,461 SQ. FT.
8.97± ACRES
EXISTING A-1 ZONING
REQUESTING I-1 ZONING

A = 06°06'12"
R = 1,874.86'
L = 199.72'
CB = S 86°11'49" W
CD = 191.02'



OWNER'S CERTIFICATION

WE, THE UNDERSIGNED, HEREBY CERTIFY THAT THE INFORMATION CONTAINED IN THIS RECORDS PLAN IS TRUE AND CORRECT AND THAT THE BOUNDARY LINE HAS BEEN RECORDED AS SHOWN ON THIS PLAN.

JOHNSBORO CITY WATER AND LIGHT, OWNER