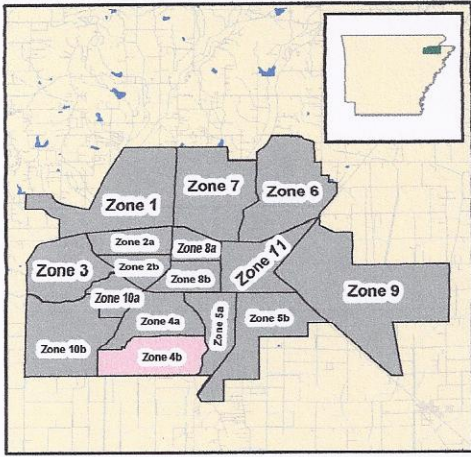


The City of Jonesboro, Arkansas

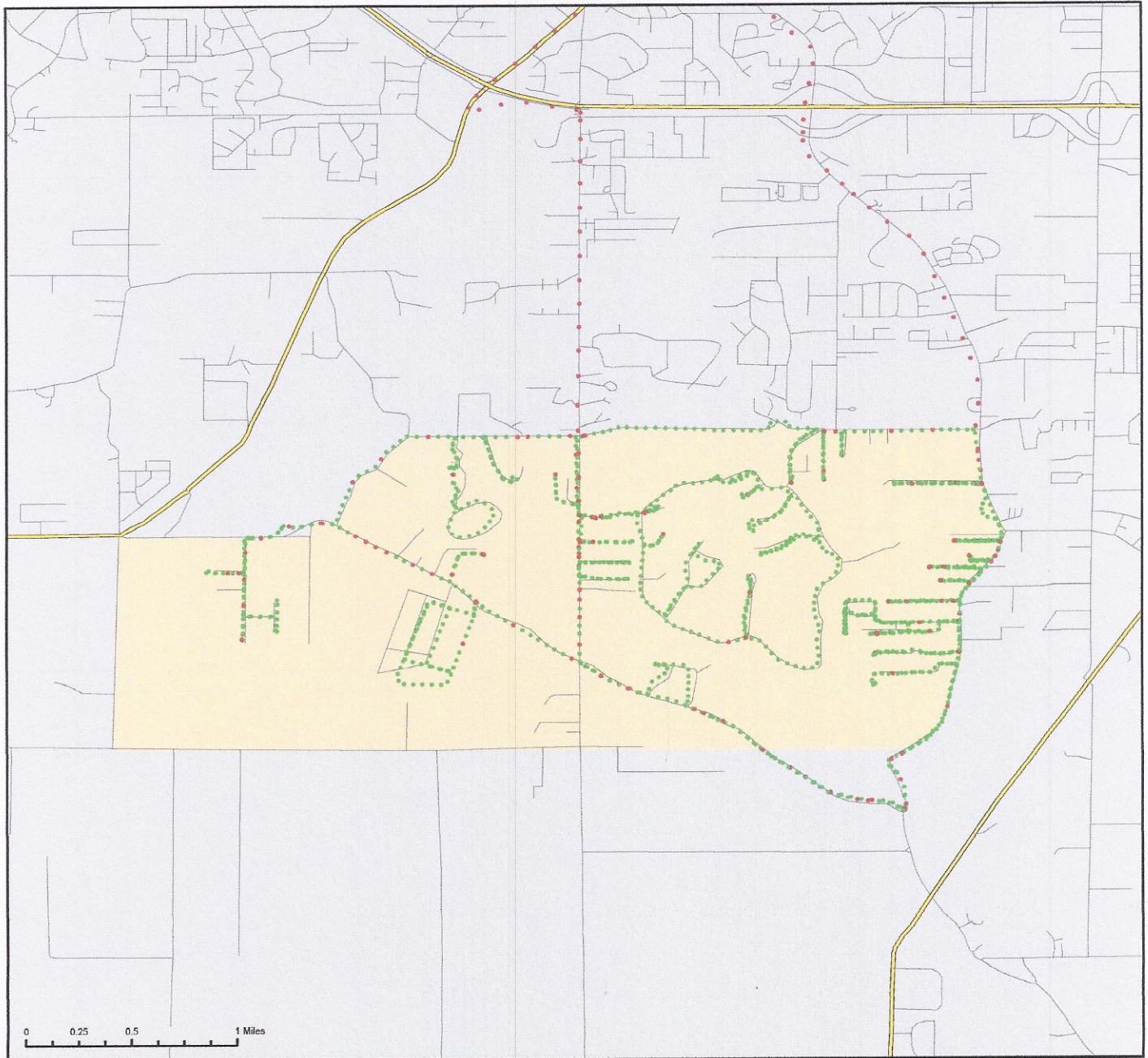
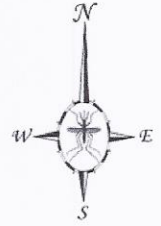
Ground Adulticide Application Date:
May 18, 2012



Sprayer Status

- Spray Off
- Spray On

Chemical: Evoleur 30-30
Quantity Used: 5.4 gal
Miles Treated: 34.4
Acres Treated: 1,248.0



0 0.25 0.5 1 Miles



Vector Disease Control
1320 Brookland Dr., Suite H
Little Rock, AR 72202

These map products were developed for use by VDCI for its internal purposes only and were not designed or intended for general use by members of the public. VDCI makes no representation or warranty as to its accuracy, timeliness, or completeness, and in particular, its accuracy in labeling or displaying dimensions, contours, property boundaries, or placement or location of any map features thereon. © 2012 VDCI. All rights reserved.