

DESCRIPTION OF SURVEY FOR: Centro Cristiano De Batesville

OF: 2916 Willow Road  
Jonesboro, Arkansas

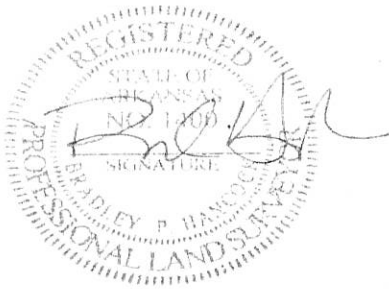
The following described lands in Craighead County, Arkansas, to-wit:

Tract 1: Lot A of Jerry Bookout's Replat of Lots 2 and 3, Block B of Harley Kiech 2nd Addition to the City of Jonesboro, Arkansas, as shown by Plat of record in Plat Cabinet "B" Page 75, subject to easements as shown on Plat.

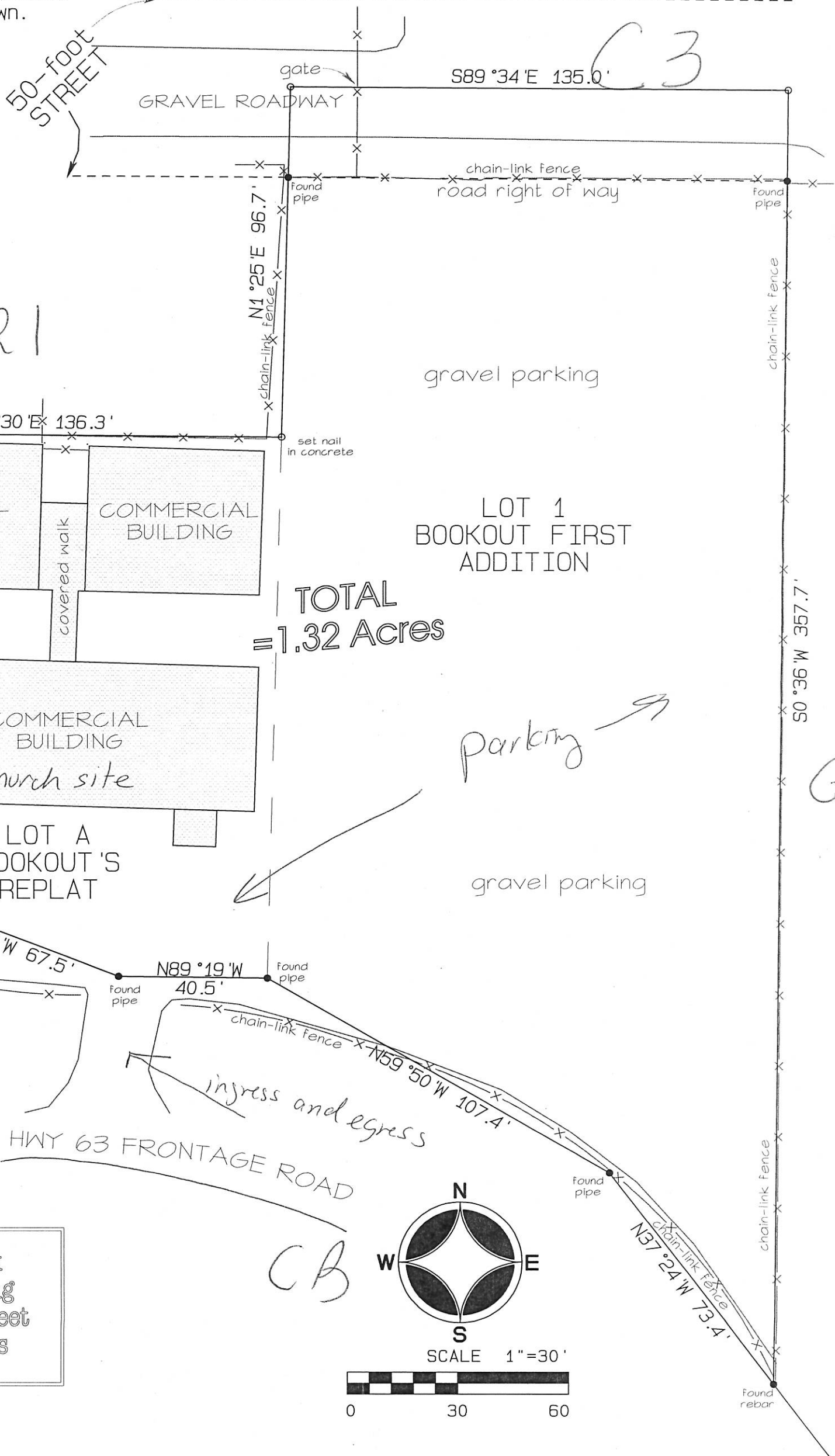
Tract 2: Lot 1 of Bookout's 1st Addition to the City of Jonesboro, Arkansas, as shown by a plat of record in Plat Cabinet "B" Page 75, subject to easements as shown on Plat.

- Notes:  
1.) Bearings from GPS observation.  
2.) Improvements are as shown.

Dated: February 23, 2015



WILLOW ROAD



R1

C-3

CB

Bradley P. Hancock  
Surveying & Mapping  
120 North Second Street  
Paragould, Arkansas

