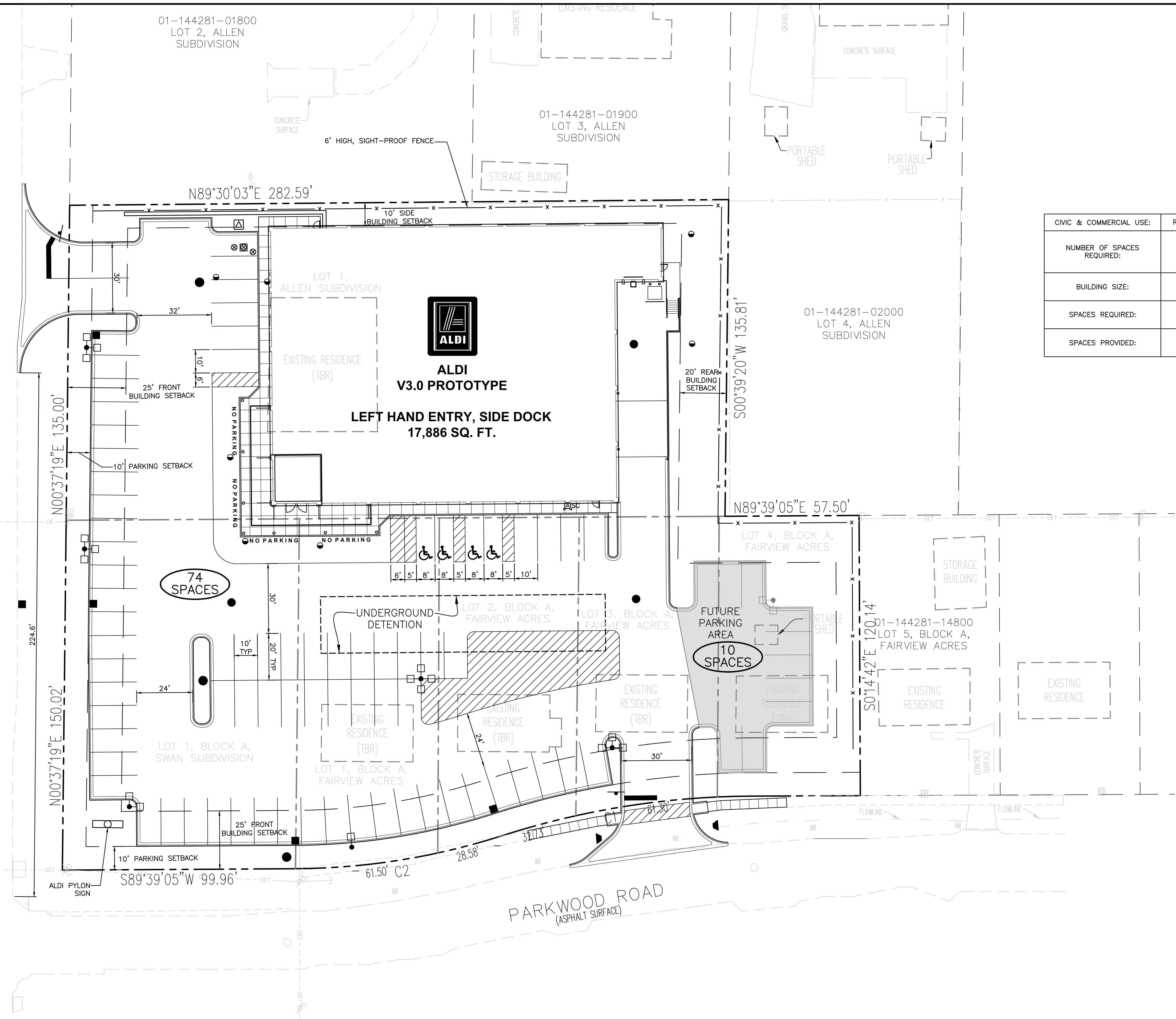


Drawing name: C:\Sawyer\Eng\Aldi\Jonesboro\_AR\Drawings\Jonesboro\_Proj\ST.dwg Plotted on: Aug 05, 2011 - 1:27pm Plotted by: Chrisbup

U.S. HIGHWAY NO. 49  
STADIUM BOULEVARD  
(ASPHALT SURFACE)



CIVIC & COMMERCIAL USE:	RETAIL/SERVICE, GENERAL
NUMBER OF SPACES REQUIRED:	1 PER 250 SF
BUILDING SIZE:	17,886 SF
SPACES REQUIRED:	72
SPACES PROVIDED:	84

ISSUE	REMARKS	DATE

**Aldi, Inc.**  
475 Pearl Drive  
O'Fallon, Missouri 63376  
Ph: (636) 278-4700

**SAWYER ENGINEERING, INC.**  
10 Auburn Court  
Highland, Illinois 62249  
Ph (314) 800-5914  
Fax (618) 882-6113  
www.SawyerEngr.com



**ALDI JONESBORO, AR**  
[site address], Jonesboro, Arkansas 72401

**SITE PLAN**

STATE OF ARKANSAS  
REGISTERED PROFESSIONAL ENGINEER  
No. 13455  
JOHN P. SAWYER

Date: 8/05/2011  
John P. Sawyer, PE  
License No. 13455  
Civil Engineer

Job Number: 2010-100  
Date: 8/05/2011  
Designed: CMB  
Drawn: CMB  
Checked: JPS

