

December 4, 2018

# Northeast Arkansas Industrial Development Commission



**RISEVER**



**Recruitment, Retention & Expansion**



## 3<sup>rd</sup> Quarter /YTD

**14 / 34**

Business Retention  
& Expansion  
Activities

**6 / 26**

Inquiries

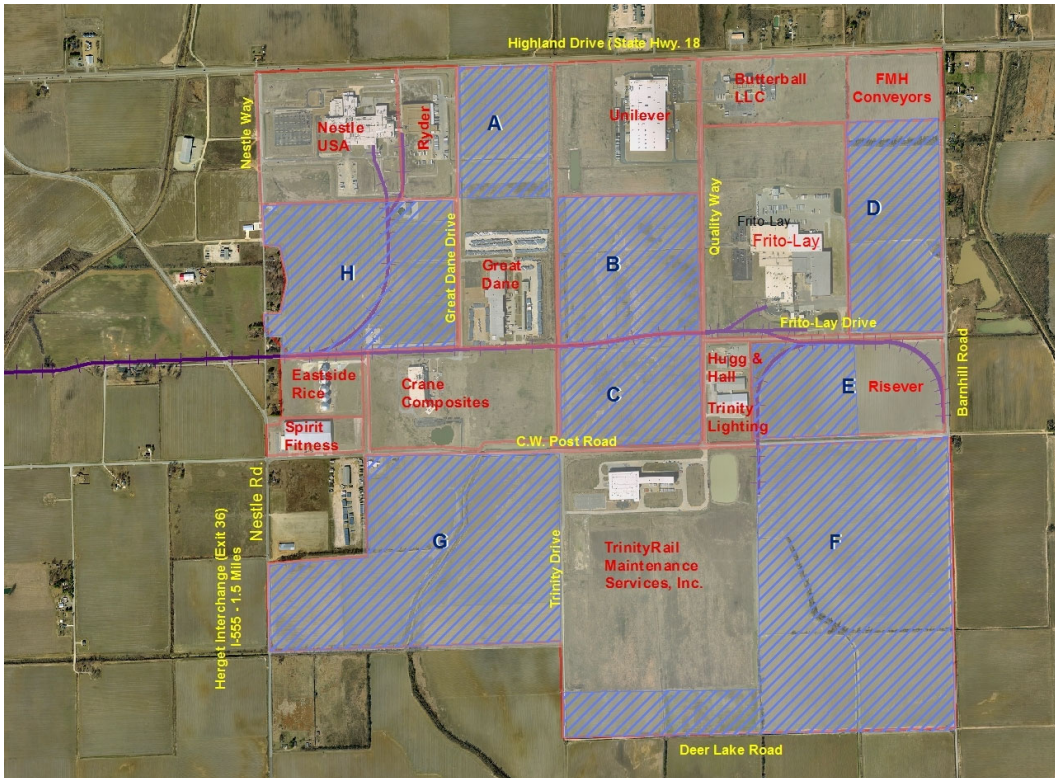
**4 / 18**

Prospect Visits

**19 / 38**

Market  
Research  
Requests

***Recruitment, Retention & Expansion***



The Northeast Arkansas Industrial Development Commission receives \$210,000 annually from the City of Jonesboro to pay for land purchases in the Craighead Technology Park

**Increasing  
capacity**



**New power line  
constructed out of  
the Craighead  
Technology Park  
substation**



**Future I-57 route expanded  
north into Missouri**



**Growing Talent  
Together**  
*Math & Sciences  
Career Path*

**Deans' Council**

**Recruitment  
Events for faculty  
and Staff**



**A-State / Downtown  
Corridor Committee Study**



Sharing workforce and economic  
development strategies with JPS  
administrative staff and board

**Tanya Hass  
AEDC Community  
Development Specialist**





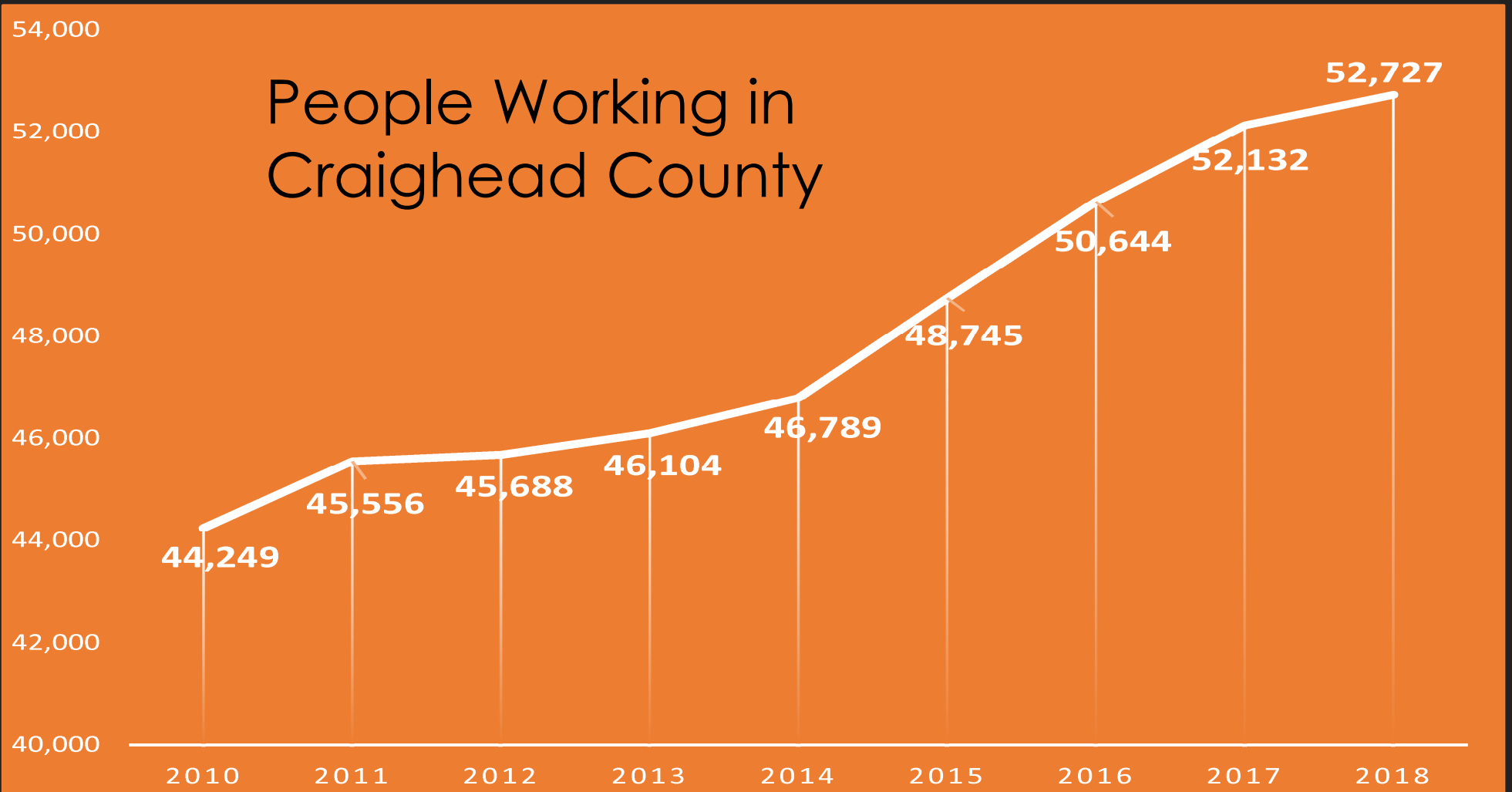
Craighead County is  
**#1** in the state for  
Career Readiness  
Certificate holders,  
with a total of **3,151**

## “Getting to Know Jonesboro” for new manufacturing professionals



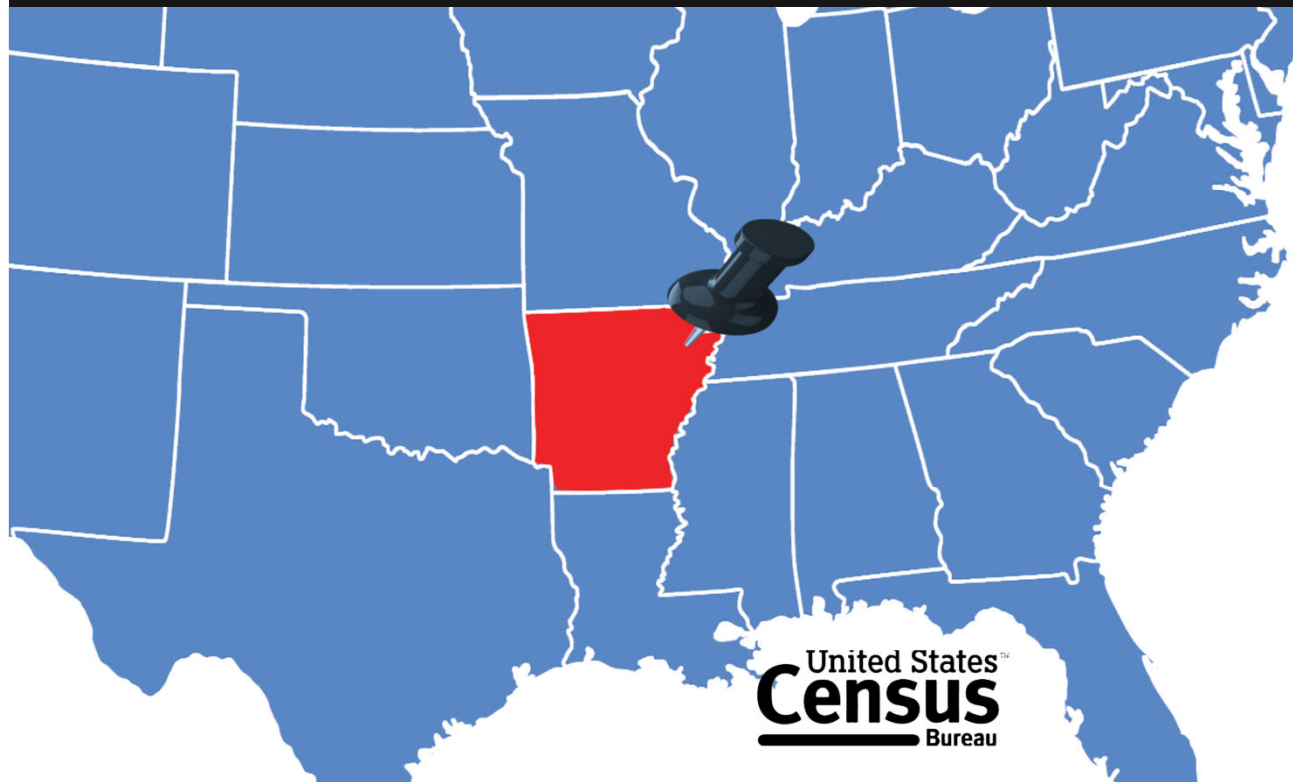


# People Working in Craighead County



Source: Arkansas Dept. of Workforce Services, Local Area Unemployment Statistics

Jonesboro MSA ranks 4<sup>th</sup> in the Nation  
for Median Household Income Growth in  
2017 with a gain of 15.1%



2017 Annual Median  
Household Income:

Jonesboro MSA - \$48,929

Arkansas - \$45,869

# Thank You

Mark Young  
on behalf of the  
Northeast Arkansas Industrial  
Development Commission