

ZONED C-4

ZONED C-3

LOT 1 OF KITTERMAN'S REPLAT
OF LOTS 2,3,4 AND 5 OF
BLOCK B OF FOXWOOD ADDITION
JONESBORO, ARKANSAS

(as Recorded in Deed Record Book 198, Page 85)

OWNER'S CERTIFICATION:

We hereby certify that we are the owners of the property shown and described hereon, that we adopt the plan of subdivision and dedicate perpetual use of all streets and easements as noted.

SURVEYOR'S CERTIFICATION:

I hereby certify that the plat shown and described hereon is the result of a survey made in June, 1985, that it is a true and accurate survey and the monuments were found or set as noted.

ASSOCIATED ENGINEERING CO., INC.
JONESBORO, ARKANSAS

HARVEY S. JOHNSON
REGISTERED
LAND SURVEYOR
STATE OF
ARKANSAS
NO. 16
Harvey S. Johnson
REGISTERED

6-27-1985
Date

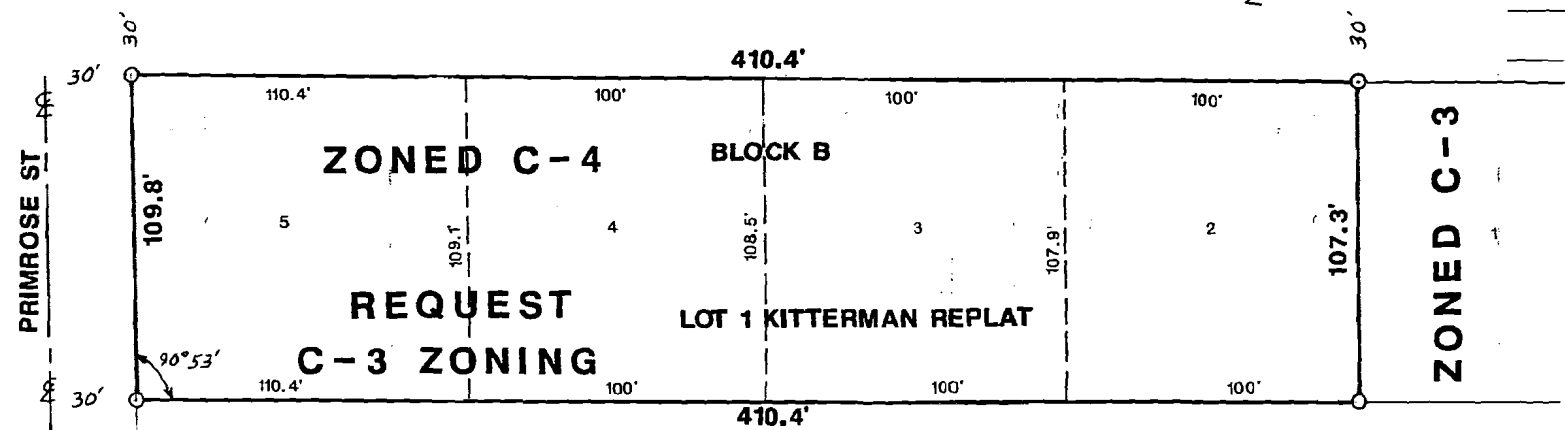


ZONED C-4 BLOCK A

2

410.5'

STONE ST



ZONED C-3

ZONED C-3

CW&L

ASSOCIATED ENGINEERING CO., INC.