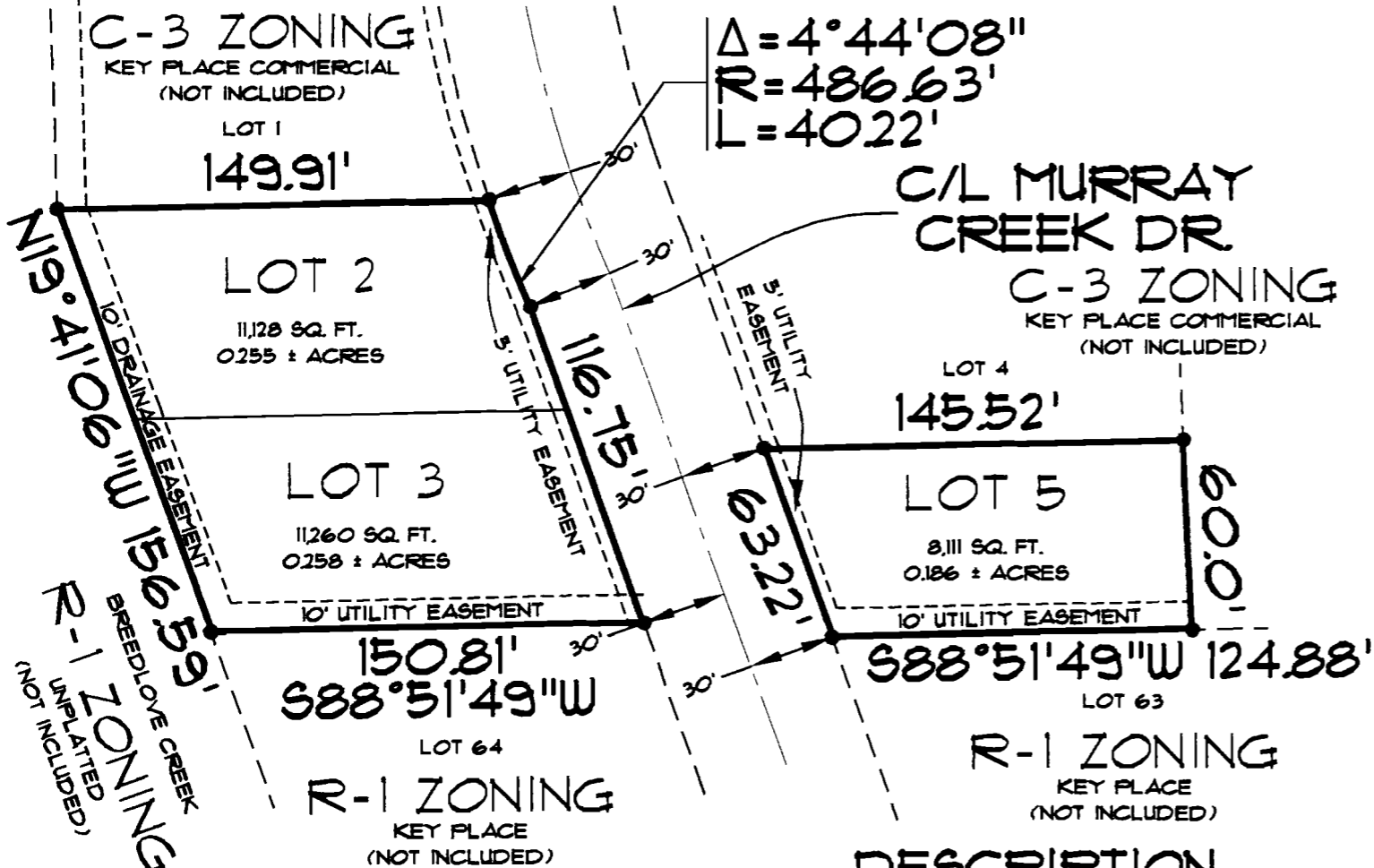
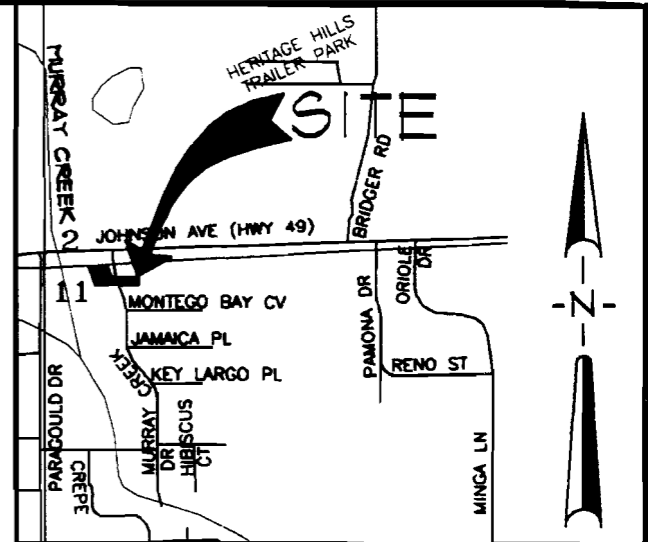


EXISTING C-3 ZONING REQUESTING R-1 ZONING



SCALE: 1" = 60'



VICINITY MAP
NOT TO SCALE

OWNER'S CERTIFICATION

WE HEREBY CERTIFY THAT WE ARE THE OWNERS OF PROPERTY AS DESCRIBED HEREON, THAT WE REQUEST THE REZONING OF THE PROPERTY SHOWN HEREON AS NOTED.

KENT ARNOLD, PRESIDENT/SECRETARY
ARNS, INC.

DESCRIPTION

LOTS 2, 3, AND 5, AS SHOWN ON THE PLAT OF KEY PLACE COMMERCIAL, CRAIGHEAD COUNTY, ARKANSAS.
CONTAINING IN ALL 30,499 SQ. FT. OR 0.700 ACRES, MORE OR LESS.
SUBJECT TO EASEMENTS, RESTRICTIONS, RESERVATIONS AND RIGHTS-OF-WAY OF RECORD.

GENERAL NOTES

THIS DRAWING DOES NOT REPRESENT A BOUNDARY SURVEY.

LEGEND

— BOUNDARY LINE

© Copyright 1999 A.E. & T., LLC

ASSOCIATED ENGINEERING AND TESTING, LLC

CIVIL ENGINEERING, LAND SURVEYING AND MATERIALS TESTING

1721 DAN AVENUE - JONESBORO, AR 72401
PH: 870-932-3594 FAX: 870-932-1554

REZONING REQUEST LOTS 2, 3 & 5, KEY PLACE COMMERCIAL ADD. JONESBORO, ARKANSAS

DATE	REVISIONS	BY

DRAWN: KLS/CADD	CHECKED: KLS	DATE: 07/14/99	SHEET
SCALE: 1" = 60'	CADD FILE: 99147-02	DWG#: 0414114.0001	1 OF 1