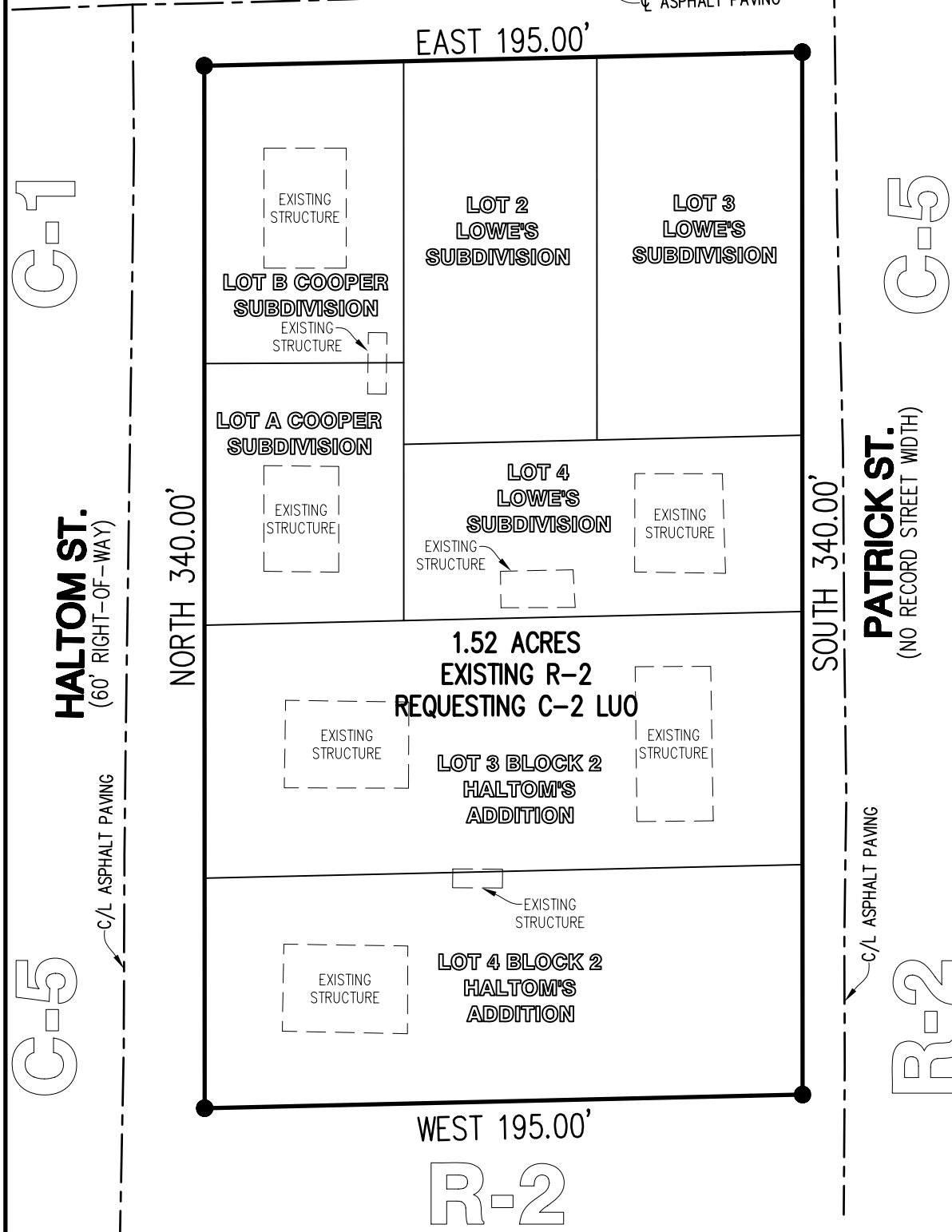
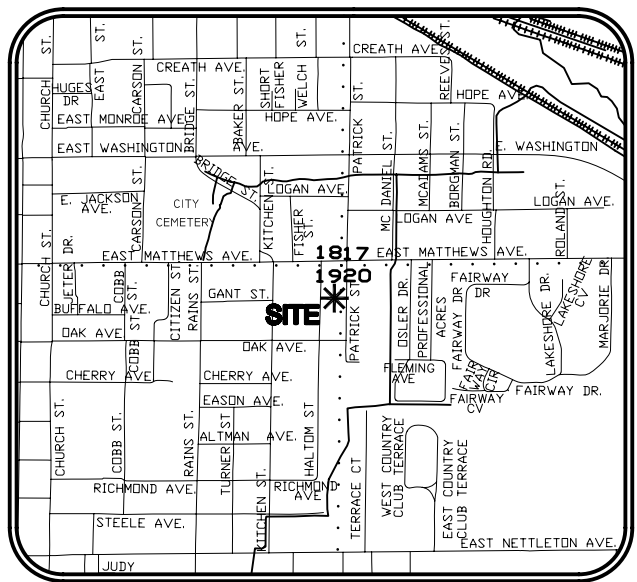


**C-5**  
**MATTHEWS AVE.**  
 (NO RECORD STREET WIDTH)



**C-2 LU-O TO INCLUDE:**

- GOVERNMENT SERVICE
- GOLF COURSE
- HOSPITAL
- HOTEL OR MOTEL
- LIBRARY
- MEDICAL SERVICE / OFFICE
- MUSEUM
- NURSING HOME
- OFFICE / GENERAL
- PARKING LOT / COMMERCIAL
- PARKS AND RECREATION
- POST OFFICE
- RESTAURANT / FAST FOOD
- RESTAURANT / GENERAL
- RETAIL / SERVICE
- SAFETY SERVICES
- SINGLE-FAMILY DETACHED
- SINGLE-FAMILY ATTACHED
- DUPLEX, TRIPLEX, 4-PLEX
- LOFT APARTMENT
- AUTOMATED TELLER MACHINE
- BANK OR FINANCIAL INSTITUTION
- BED AND BREAKFAST
- CEMETERY
- CHURCH
- COLLEGE OR UNIVERSITY
- DAY CARE, LIMITED (FAMILY HOME)



**VICINITY MAP**  
 NOT TO SCALE

BEARINGS BASED ON PREVIOUS SURVEY  
 DATED 03/05/02.

**CERTIFICATE OF SURVEY:**

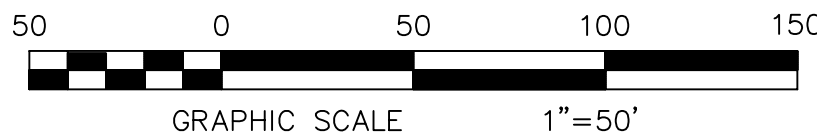
THIS IS TO CERTIFY THAT HAYWOOD, KENWARD, BARE AND ASSOCIATES INC., PROFESSIONAL LAND SURVEYORS HAVE SURVEYED THE FOLLOWING PARCEL OF LAND:  
 LOTS "A" AND "B" OF COOPER SUBDIVISION OF LOT 1 OF LOWE'S SUBDIVISION OF LOTS 1 AND 2, BLOCK 2 OF HALTOM'S ADDITION, AND LOTS 2, 3 AND 4 OF LOWE'S SUBDIVISION OF LOTS 1 AND 2, BLOCK 2 OF HALTOM'S ADDITION AND LOTS 3 AND 4, BLOCK 2 OF HALTOM'S ADDITION TO THE CITY OF JONESBORO, CRAIGHEAD COUNTY, ARKANSAS, CONTAINING 1.52 ACRES MORE OR LESS, SUBJECT TO ALL RIGHTS-OF-WAY AND EASEMENTS OF RECORD.

**OWNERS CERTIFICATION:**

I HEREBY CERTIFY THAT I AM THE OWNER OF THE ABOVE DESCRIBED PROPERTY AND I HEREBY REQUEST A REZONING FROM **(R-2) MULTI-FAMILY LOW DENSITY DISTRICT TO (C-2 LU-O) DOWNTOWN FRINGE COMMERCIAL DISTRICT - LIMITED USE OVERLAY**

SIGNED THIS 15TH DAY OF FEBRUARY, 2008

*Kenneth R. Gibson*  
 KENNETH R. GIBSON KCL2, LLC  
*Cynthia D. Gibson*  
 CYNTHIA D. GIBSON KCL2, LLC



**REZONING PLAT**

LOTS "A" AND "B" OF COOPER SUBDIVISION OF LOT 1 OF LOWE'S SUBDIVISION OF LOTS 1 AND 2, BLOCK 2 OF HALTOM'S ADDITION, AND LOTS 2, 3 AND 4 OF LOWE'S SUBDIVISION OF LOTS 1 AND 2, BLOCK 2 OF HALTOM'S ADDITION AND LOTS 3 AND 4, BLOCK 2 OF HALTOM'S ADDITION TO THE CITY OF JONESBORO, CRAIGHEAD COUNTY, ARKANSAS

**HAYWOOD, KENWARD, BARE & ASSOCIATES, INC.**  
 CIVIL ENGINEERING - SURVEYING - PLANNING  
 1801 LATOURETTE DRIVE  
 JONESBORO, ARKANSAS 72404  
 TEL 870-932-2019 FAX 870-932-1076

REVISIONS		
DATE	BY	DESCRIPTION
SURVEY INDEX CODE		
PROJECT NO. G012-0002-12		
DRAWN BY JJN	CHECKED BY JHB	
SHEET 1 OF 1	SCALE 1"=50'	
DATE 02/15/08	DRAWING NO. B-152	

COPYRIGHT 2008, ALL RIGHTS RESERVED

02/15/08  
 CLIENT  
**KCL2, LLC**