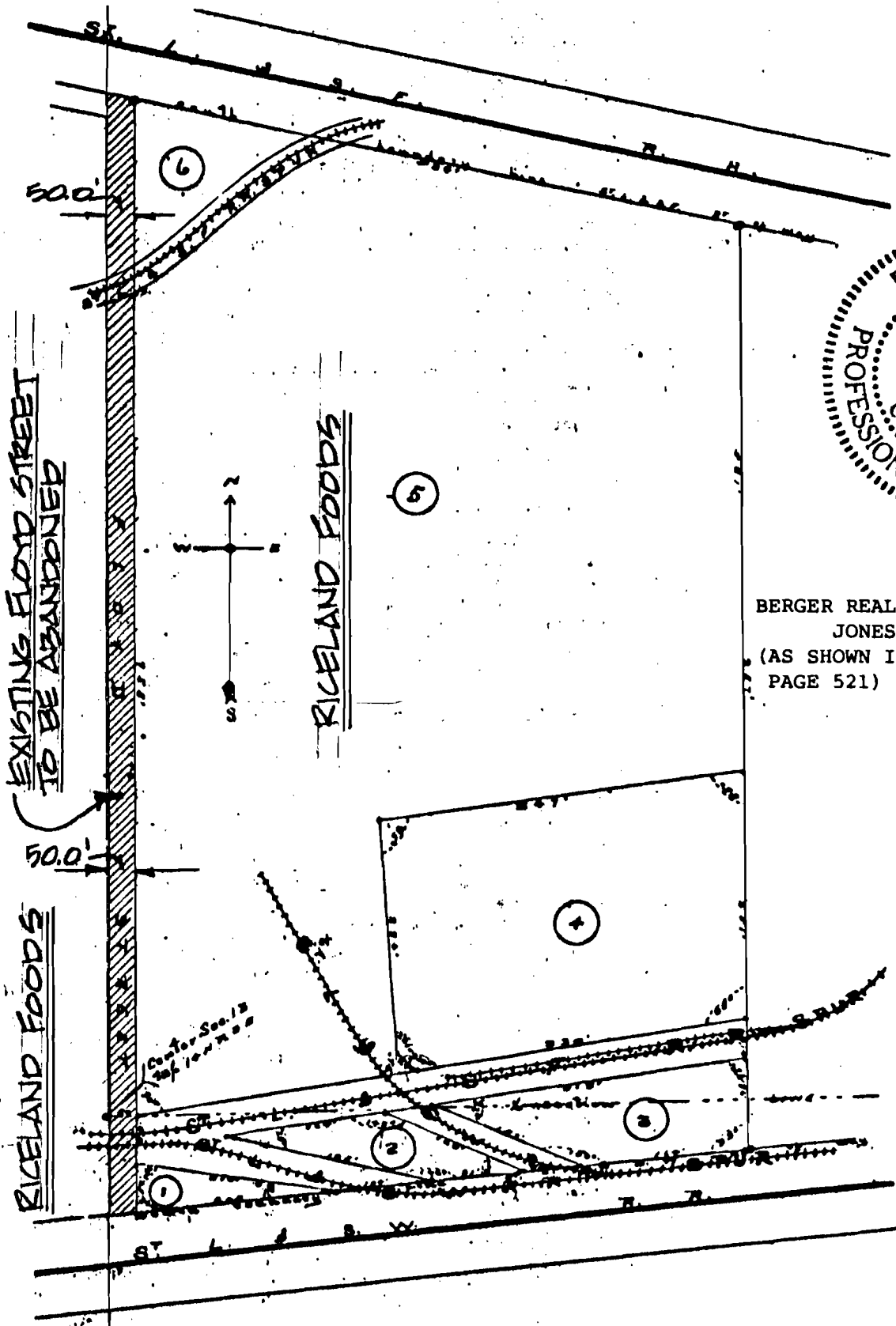


BERGER REALTY COMPANY ADDITION
 JONESBORO, ARKANSAS
 (AS SHOWN IN DEED RECORD 43,
 PAGE 521)



(DESCRIPTION OF FLOYD STREET ABANDONMENT) A STRIP OF LAND 50.0' IN WIDTH ADJACENT AND ADJOINING THE WEST BOUNDARY OF BERGER REALTY COMPANY ADDITION TO JONESBORO, ARKANSAS BOUND ON THE SOUTH BY THE NORTH R/W LINE OF THE ST. LOUIS & SOUTHWESTERN RAILROAD, AND BOUND ON THE NORTH BY THE SOUTH R/W LINE OF THE ST. LOUIS AND SAN FRANCISCO RAILROAD, TOGETHER WITH ANY AND ALL PRESCRIPTIVE RIGHTS OF WAY, ALL BEING SUBJECT TO ANY AND ALL RIGHTS OF WAY AND EASEMENTS OF RECORD, ALL IN SECTION 13, TOWNSHIP 14 NORTH, RANGE 3 EAST, ALL AS SHOWN ON THE PLAT HEREON.....

HAYWOOD, KENWARD & ASSOCIATES, INC.

CIVIL ENGINEERS - SURVEYORS
 603 SOUTHWEST DRIVE
 JONESBORO, ARKANSAS 72401

By *Clay Kenward*

PLAT SHOWING PROPOSED STREET ABANDONMENT

FLOYD STREET JONESBORO, ARKANSAS		SCALE N/A	DRAWN BY CK
THE ABANDONMENT OF FLOYD STREET SEVERING RICELAND FOODS PROPERTY IN JONESBORO, ARKANSAS		REVISED	
DATE 5/23/89	APPROVED BY	DRAWING NUMBER 3-126	