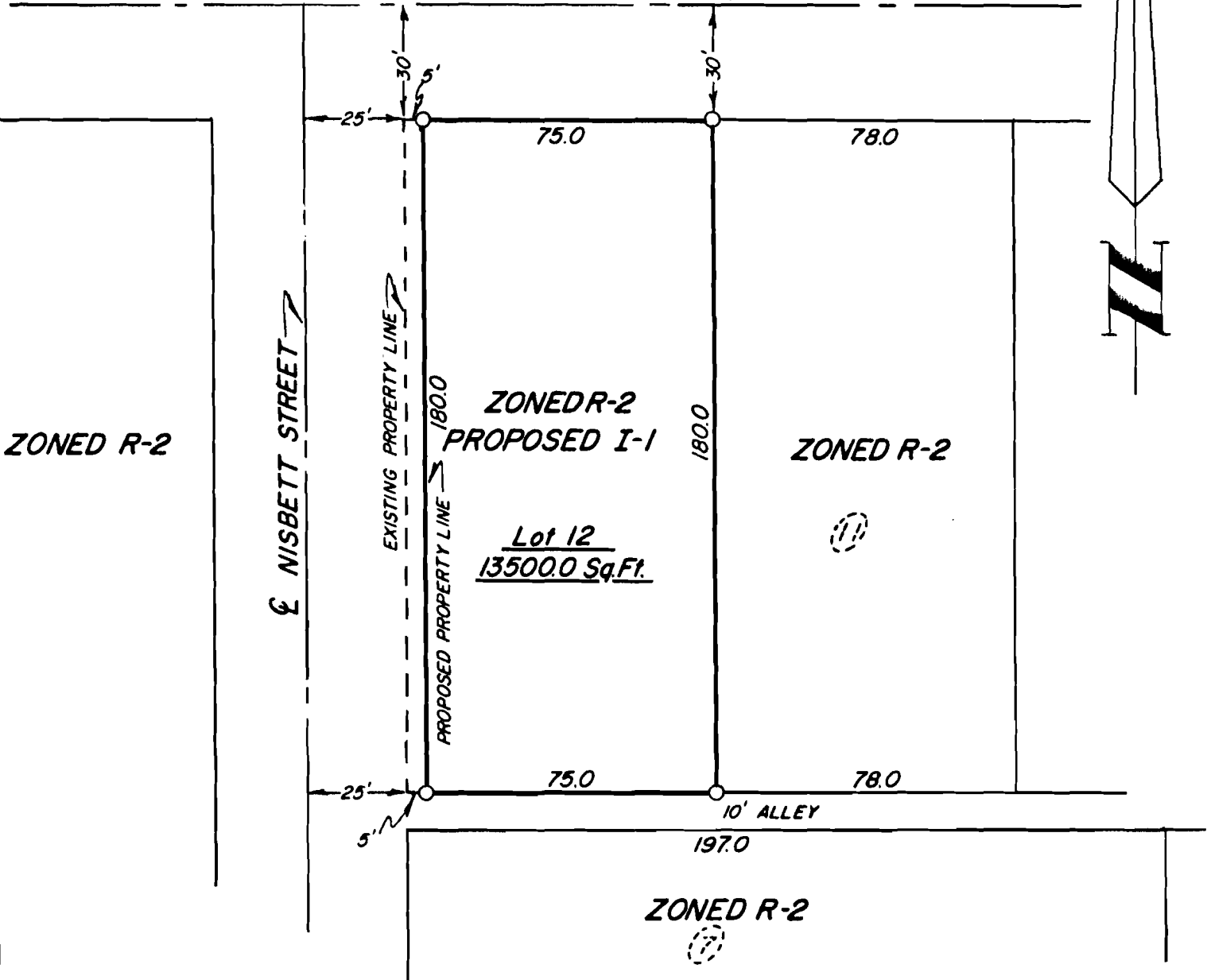


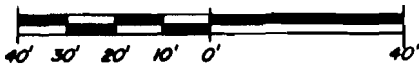


ZONED I-1

☉ BURKE AVENUE ↗



SCALE: 1" = 40'



**DESCRIPTION**

Lot 12 of Gregg and Houghton's Subdivision of Block 13 of Nisbett's Second Addition to the City of Jonesboro, Arkansas, as recorded in Deed Record 23, Page 434, in the office of the Circuit Court Clerk and Ex-Officio Recorder.

We hereby certify that we are the owners of the property shown and described hereon, that we adopt the Plan of Subdivision and dedicate perpetual use of all streets and easements as noted.

*James Chaplin*

Date August 26, 1983

**TROY L. SHEETS  
SURVEYING**

500 W. MONROE  
JONESBORO, ARKANSAS R2921

JAMES CHAPLIN