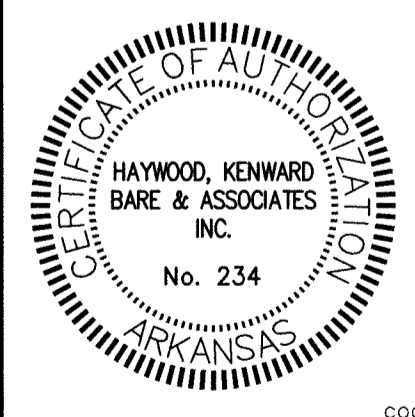




Michael A. Boggs - Civil Engineer
Arkansas - 14026

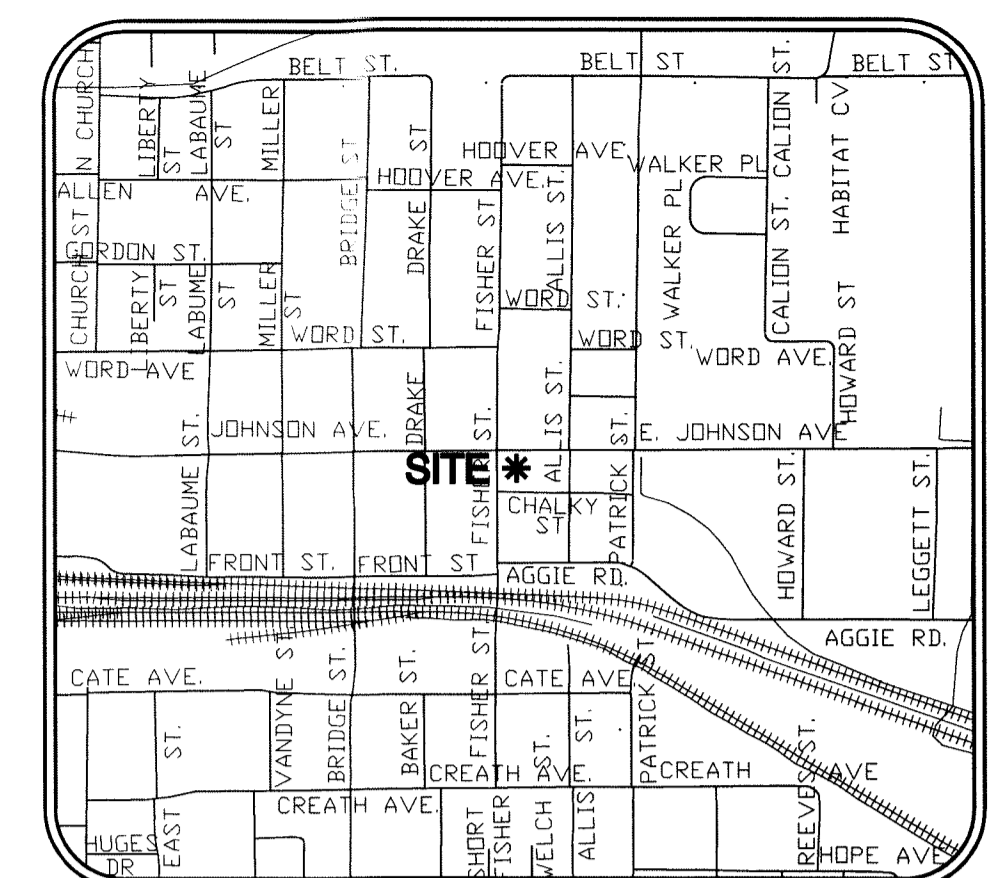


Haywood, Kenward, Bare, and Associates, Inc
ARKANSAS - 234

CLIENT: RGB
COPYRIGHT 2011, ALL RIGHTS RESERVED

REVISIONS		
DATE	BY	DESCRIPTION

PROJECT NO: R009-0005
DRAWN BY: MAB CHECKED BY: MAB
SHEET: 4 OF 6 SCALE: 1" = 10'
DATE: 3/28/12 DRAWING NO: 21-67



VICINITY MAP
(NOT TO SCALE)

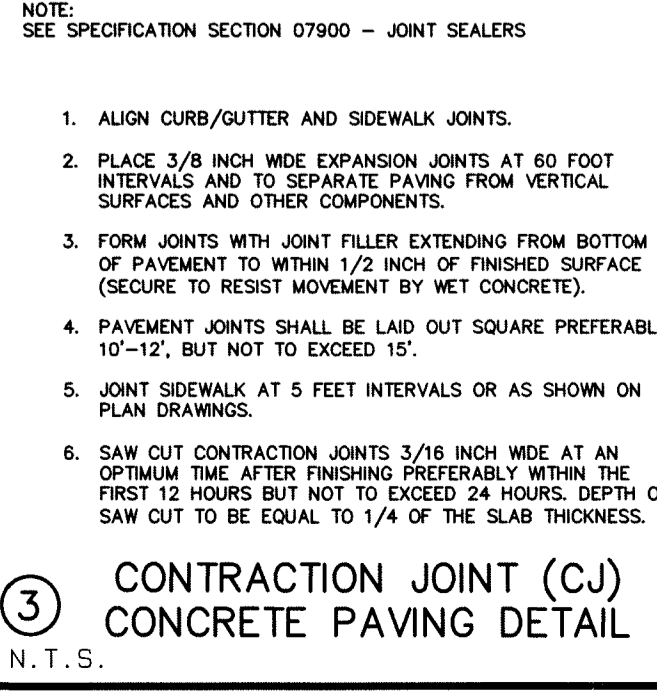
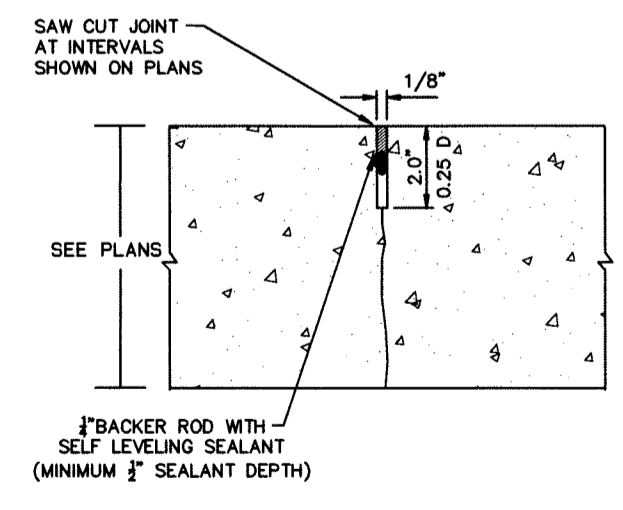
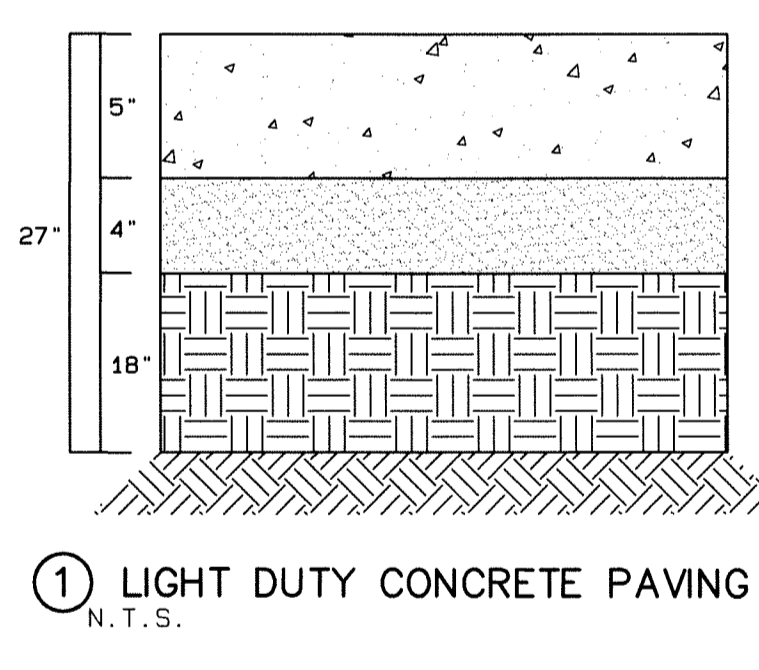
- LEGEND:**
- FOUND MONUMENT
 - ⊕ SITE BENCHMARK
 - CONTROL POINT
 - UTILITY POLE
 - PAD-MOUNTED TRANSFORMER
 - ⊗ ELECTRIC BOX
 - ⊙ SANITARY SEWER MANHOLE
 - ⊙ SEWER LIFT STATION
 - ⊙ STORM DRAIN MANHOLE
 - ⊙ GAS REGULATOR
 - ⊙ TELEPHONE PEDESTAL
 - ⊙ TELECOMMUNICATIONS BOX
 - OVERHEAD ELECTRIC LINE
 - WATER LINE
 - SANITARY SEWER LINE
 - FM SANITARY SEWER FORCE MAIN
 - GAS LINE
 - TELECOMMUNICATIONS LINE
 - TP TOP OF PAVEMENT
 - TC TOP OF BACK OF CURB
 - TW TOP OF WALK
 - FLOW DIRECTION

ENGINEERING NOTES:

- CONTRACTOR IS RESPONSIBLE FOR INSTALLING AND MAINTAINING ADEQUATE EROSION/SEDIMENTATION CONTROL DURING ALL PHASES OF CONSTRUCTION.
- CONTRACTOR IS RESPONSIBLE FOR KEEPING MUD AND DEBRIS OFF CITY STREETS AND OFF OF PAVED DRIVEWAYS WHERE APPLICABLE. CLEAN UP IS REQUIRED DAILY.
- CONTRACTOR IS RESPONSIBLE FOR THE REPLACEMENT OF SIDEWALK, CURB AND GUTTER AND/OR ASPHALT/CONCRETE DAMAGED DURING CONSTRUCTION.
- DEVIATION FROM ENGINEERING DESIGN PLANS IS NOT PERMITTED. ANY CHANGE IN THE CONSTRUCTION DOCUMENTS THAT ARE NOT APPROVED BY THE ENGINEER WILL RESULT IN CONSTRUCTION TERMINATION UNTIL A RESOLUTION IS MET. MODIFICATION NEEDED TO UPDATE DESIGN PLANS WILL RESULT IN DESIGN EXPENSES FOR THE CONTRACTOR.
- CONTRACTOR SHALL NOTIFY THE ENGINEER AND OWNER/DEVELOPER OF ANY INFORMATION FOUND IN THE FIELD THAT IS DIFFERENT FROM WHAT IS SHOWN ON THESE DESIGN PLANS.
- ALL DISTURBED AREAS ARE TO BE SODED WITH COMMON BERMEA GRASS UPON COMPLETION OF EARTHWORK (SEE SPECIFICATION).
- CONTRACTOR IS RESPONSIBLE FOR ALL CITY, STATE, OR FEDERAL PERMIT FEES ASSOCIATED WITH CONSTRUCTION.

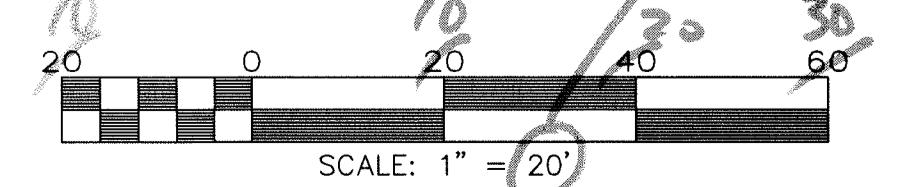
SITE NOTES:

- VERTICAL DATUM: NAVD 88
- SITE BENCHMARK IS A COTTON PICKER SPINDLE IN THE NORTH FACE OF A UTILITY POLE LOCATED AT THE NORTHWEST CORNER OF THE PROPERTY. (ELEVATION = 303.44), AS SHOWN ON THE PLAT HEREON.
- BASIS OF BEARING: ARKANSAS STATE PLANE GRID NORTH ZONE (0301)
- CONTROL POINTS:
A. N-552804.59, E-1698586.80
B. N-552695.94, E-1698592.27

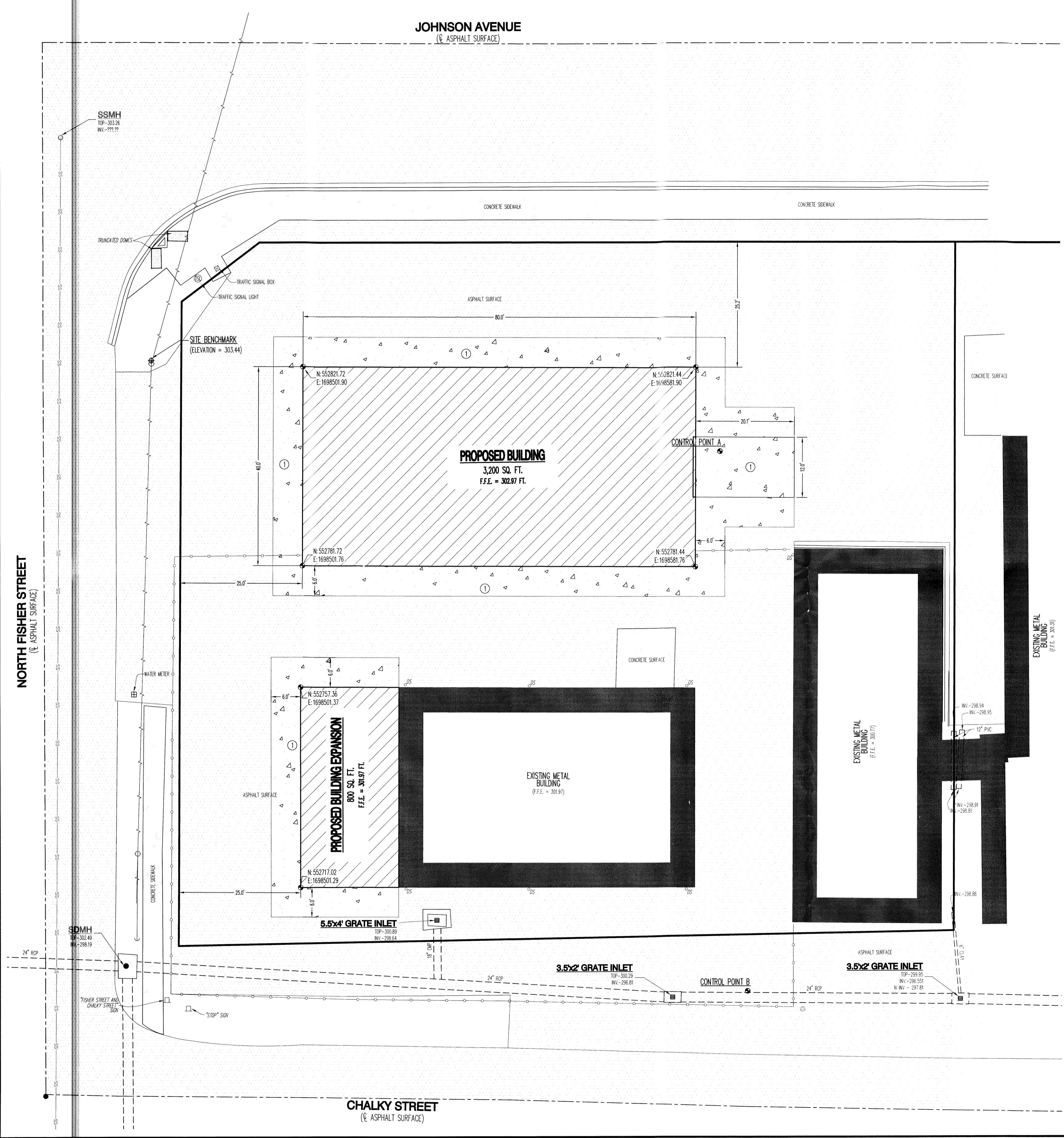


GENERAL NOTES:

The underground utilities shown have been located by field measurements and existing utility maps. Haywood, Kenward, Bare & Associates, Inc. make no warranty to the exact location of the utilities shown or not shown on this drawing. It shall be the responsibility of the contractor to verify any and all utilities prior to construction. Call Arkansas One-Call 1-800-482-8998 before you dig!



CIVIL SITE DIMENSION PLAN



NORTH FISHER STREET
(ASPHALT SURFACE)

JOHNSON AVENUE
(ASPHALT SURFACE)

CHALKY STREET
(ASPHALT SURFACE)