

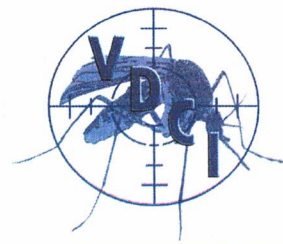
# June, 2025 Mosquito Control Report



Jonesboro, AR

*Prepared by:*  
**Vector Disease Control**  
2221 North Church  
Jonesboro, AR 72401  
[www.vdci.net](http://www.vdci.net)  
Office: 870-933-6939

Global Leaders in Mosquito Control





## ***City of Jonesboro Activity Report***

*Mosquito Surveillance and Control Report*

**June 2025**

Vector Disease Control, Inc. (VDCI) provides a proven, scientific approach to mosquito control for the City of Jonesboro. VDCI's operations include larval and adult mosquito surveillance followed by the application of larvicides and adulticides.

### **Mosquito Surveillance**

VDCI has utilized a total of **(13)** New Jersey light traps placed in residential and recreational areas throughout Jonesboro. These traps collected an average of **4.8681** mosquitoes per trap per night **(1,772)** total mosquitoes during this time. There have been a total of **3** mosquito species collected.

### **Larval Control Activity**

Permanent water, flood water, artificial containers, and drainage system sites are inspected for larval mosquito breeding on a regular basis. In total, **55** sites were inspected with **14** sites having mosquito larvae present. As a result of these inspections, **410.00** ounces of granular BTI (VectoBacG) was applied to these mosquito breeding sites. Additionally, VDCI is continuing to eliminate breeding habitat for artificial container mosquitoes by targeting bird baths, buckets, tires etc.



### **Adult Mosquito Control Activity**

2221 N. Church St. Jonesboro, AR 72401

T-855.933.6939 F- 870.933.0122

[www.vdci.net](http://www.vdci.net)



## ***City of Jonesboro Activity Report***

*Mosquito Surveillance and Control Report*

In response to community events and mosquito surveillance data, VDCI applied the adulticide on **3** truck routes for this reporting period. All adulticide ULV applications were made with truck-mounted ULV units equipped with GPS-enabled monitors. During this report period, a total of **329.30** spray miles and 11,971.50 **acres** were treated with a total of **86** gallons of adulticide in residential and recreational areas. In addition to routine truck spraying, VDCI has responded to **72** service requests and adulticided all parks, and any special events during the month.

### **Summary**

Throughout this reporting period, VDCI has continued to provide exceptional control of larval and adult mosquito populations. VDCI will remain diligent in our surveillance and control activities to prevent a significant increase in the mosquito population. If VDCI detects a significant rise in the mosquito population we will increase larval and adult control. As always, VDCI welcomes residents with any mosquito-related questions or concerns to contact VDCI's Jonesboro office directly at 855.933.6939.

2221 N. Church St. Jonesboro, AR 72401

T-855.933.6939 F- 870.933.0122

[www.vdci.net](http://www.vdci.net)

**Vector Disease Control International**  
**Year-To-Date Comparison**  
**2024 - 2025 Season**

	May 2025	May 2024	June 2025	June 2024	July 2025	July 2024	Aug 2025	Aug 2024	Sept/Oct 2025	Sept/Oct 2024	YTD 2025	YTD 2024
<b>Light Trap Surveillance:</b>												
Total Mosquitoes Collected	43	217	1,772	9,179		5,504		1303		1189		17,392
Total Average Mosquito Collected (per trap per day)	0.40	8.346	4.8681	25.217		13.88		7.34		6.46		61.243
Total Average Species	2	3	3	3		3		3		3		3
<b>Larviciding:</b>												
Total Inspected Sites	41	40	55	59		65		12		65		241
Total Sites with Larvicide	1	0	14	20		25		4		16		73
Total Larvicide Used (in Quince)	1	0	410	800		1,728		168		480		3,176
<b>Adulticiding:</b>												
Total Spray Miles	329.3	97.2	1,300.50	1,864.90		1,965.30		1145.4		614.1		5,686.80
Total Acres Treated	11,971.50	3,534.60	54,558.60	67,804.50		71,454.30		41,645.30		22,327.90		206,766.60
Total Gallons Sprayed	86	26.9	359	442		416		258		154.3		1297.2
Total Nugsis Sprayed	4	3	16	17		19		14		10		63
<b>Aerials:</b>												
Aerial Sprays	0	0	0	0		1		2		3		6
Total Gallons	0	0	0	0		120		114		175		409
Total Acres	0	0	0	0		23,273		22,109		33,939		79,321
Requested Services:	3	9	72	58		53		23		56		199



# Ground Adulicide Applications

Start Date: 06/01/2025    End Date: 06/30/2025

Jonesboro

Month	Date	Municipality	Chemical	Mix Ratio	Trip Miles	Spray Miles	Spray Acres	Gallons Sprayed
Jonesboro Zone 01 Applications								
June 2025	06/24/2025	Jonesboro	Permanone 30-30 (General Use) (432-1235)	1:5	51.2	45.8	1,663.8	11.0
	06/27/2025	Jonesboro	Permanone 30-30 (General Use) (432-1235)	1:5	56.0	42.0	1,527.1	10.0
Total Permanone 30-30 (General Use) Applied: 21.0								
Jonesboro Zone 01 Totals:					107.2	87.8	3,191.0	21.0
Jonesboro Zone 02A Applications								
June 2025	06/24/2025	Jonesboro	Permanone 30-30 (General Use) (432-1235)	1:5	41.6	34.9	1,270.1	9.0
Total Permanone 30-30 (General Use) Applied: 9.0								
Jonesboro Zone 02A Totals:					41.6	34.9	1,270.1	9.0
Jonesboro Zone 02B Applications								
June 2025	06/27/2025	Jonesboro	Permanone 30-30 (General Use) (432-1235)	1:5	17.1	16.7	608.7	4.0
Total Permanone 30-30 (General Use) Applied: 4.0								
Jonesboro Zone 02B Totals:					17.1	16.7	608.7	4.0
Jonesboro Zone 03 Applications								
June 2025	06/25/2025	Jonesboro	Permanone 30-30 (General Use) (432-1235)	1:5	43.0	33.6	1,222.4	10.0

Month	Date	Municipality	Chemical	Mix Ratio	Trip Miles	Spray Miles	Spray Acres	Gallons Sprayed	
June 2025	06/02/2025	Jonesboro	CSI 30-30 (53883-298)	1:5	51.0	37.0	1,345.3	7.0	
			CSI 30-30 (53883-298)	1:5	36.0	34.0	1,236.2	7.0	
			Total Permanone 30-30 (General Use) Applied:						10.0
Jonesboro Zone 03 Totals: 130.0 104.6 3,804.0 24.0									
Total CSI 30-30 Applied: 14.0									
Jonesboro Zone 04A Applications									
June 2025	06/25/2025	Jonesboro	Permanone 30-30 (General Use) (432-1235)	1:5	55.3	44.4	1,613.7	11.0	
			Total Permanone 30-30 (General Use) Applied:						11.0
			CSI 30-30 (53883-298)	1:5	38.5	32.6	1,183.9	7.0	
Total CSI 30-30 Applied: 7.0									
Jonesboro Zone 04A Totals: 93.8 76.9 2,797.5 18.0									
Jonesboro Zone 04B Applications									
June 2025	06/26/2025	Jonesboro	Permanone 30-30 (General Use) (432-1235)	1:5	38.5	13.4	486.9	8.0	
			Permanone 30-30 (General Use) (432-1235)	1:5	43.1	30.3	1,099.9	7.0	
			Total Permanone 30-30 (General Use) Applied:						15.0
June 2025	06/10/2025	Jonesboro	CSI 30-30 (53883-298)	1:5	42.0	30.0	1,090.8	10.0	
			CSI 30-30 (53883-298)	1:5	54.0	50.1	1,821.6	9.0	
			CSI 30-30 (53883-298)	1:5	57.0	46.0	1,672.6	9.0	

Month	Date	Municipality	Chemical	Mix Ratio	Trip Miles	Spray Miles	Spray Acres	Gallons Sprayed
Jonesboro Zone 05A Applications								
June 2025	06/10/2025	Jonesboro	CSI 30-30 (53883-298)	1:5	50.0	38.0	1,381.7	9.0
					Total CSI 30-30 Applied: 9.0			
					Jonesboro Zone 05A Totals:	50.0	38.0	1,381.7 9.0
Jonesboro Zone 05B Applications								
June 2025	06/27/2025	Jonesboro	Permanone 30-30 (General Use) (432-1235)	1:5	69.0	47.8	1,736.2	12.0
					Total Permanone 30-30 (General Use) Applied: 12.0			
June 2025	06/03/2025	Jonesboro	CSI 30-30 (53883-298)	1:5	56.0	38.0	1,381.7	8.0
June 2025	06/20/2025	Jonesboro	CSI 30-30 (53883-298)	1:5	63.4	55.4	2,014.7	11.0
					Total CSI 30-30 Applied: 19.0			
					Jonesboro Zone 05B Totals:	188.4	141.2	5,132.6 31.0
Jonesboro Zone 06 Applications								
June 2025	06/23/2025	Jonesboro	Permanone 30-30 (General Use) (432-1235)	1:5	40.6	34.1	1,240.6	10.0
June 2025	06/26/2025	Jonesboro	Permanone 30-30 (General Use) (432-1235)	1:5	27.8	23.0	834.5	7.0
					Total Permanone 30-30 (General Use) Applied: 17.0			
June 2025	06/05/2025	Jonesboro	CSI 30-30 (53883-298)	1:5	56.0	41.0	1,490.8	7.0



Month	Date	Municipality	Chemical	Mix Ratio	Trip Miles	Spray Miles	Spray Acres	Gallons Sprayed
	06/09/2025	Jonesboro	CSI 30-30 (53883-298)	1:5	62.0	44.0	1,599.8	10.0
	06/10/2025	Jonesboro	CSI 30-30 (53883-298)	1:5	40.0	36.0	1,309.0	7.0
	06/12/2025	Jonesboro	CSI 30-30 (53883-298)	1:5	55.0	44.0	1,599.8	8.0
	06/20/2025	Jonesboro	CSI 30-30 (53883-298)	1:5	44.3	36.1	1,313.7	8.0
<i>Total CSI 30-30 Applied:</i>								40.0
<i>Jonesboro Zone 06 Totals:</i>					325.8	258.2	9,388.2	57.0

#### Jonesboro Zone 07 Applications

June 2025	06/02/2025	Jonesboro	CSI 30-30 (53883-298)	1:5	57.5	51.0	1,852.9	11.0
	06/16/2025	Jonesboro	CSI 30-30 (53883-298)	1:5	43.2	38.0	1,379.9	8.0
<i>Total CSI 30-30 Applied:</i>								19.0
<i>Jonesboro Zone 07 Totals:</i>					100.6	88.9	3,232.8	19.0

#### Jonesboro Zone 08A Applications

June 2025	06/25/2025	Jonesboro	Permanone 30-30 (General Use) (432-1235)	1:5	41.5	33.2	1,208.2	15.0
June 2025	06/10/2025	Jonesboro	CSI 30-30 (53883-298)	1:5	32.7	28.0	1,018.1	8.0
<i>Total Permanone 30-30 (General Use) Applied:</i>								15.0
<i>Total CSI 30-30 Applied:</i>								8.0
<i>Jonesboro Zone 08A Totals:</i>					74.2	61.2	2,226.3	23.0

#### Jonesboro Zone 08B Applications



Month	Date	Municipality	Chemical	Mix Ratio	Trip Miles	Spray Miles	Spray Acres	Gallons Sprayed
June 2025	06/25/2025	Jonesboro	Permanone 30-30 (General Use) (432-1235)	1:5	37.3	30.3	1,101.0	9.2
	06/25/2025	Jonesboro	Permanone 30-30 (General Use) (432-1235)	1:5	37.3	30.3	1,101.0	7.0
Total Permanone 30-30 (General Use) Applied: 16.2								
June 2025	06/16/2025	Jonesboro	CSI 30-30 (53883-298)	1:5	39.8	30.7	1,115.5	7.0
Total CSI 30-30 Applied: 7.0								
Jonesboro Zone 08B Totals:					114.4	91.2	3,317.5	23.2

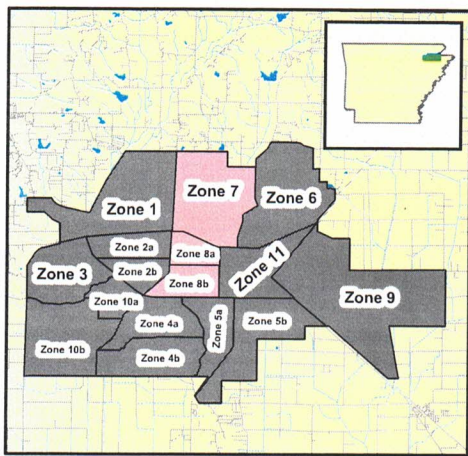
Jonesboro Zone 09 Applications								
June 2025	06/24/2025	Jonesboro	Permanone 30-30 (General Use) (432-1235)	1:5	64.9	40.9	1,485.7	10.0
Total Permanone 30-30 (General Use) Applied: 10.0								
Jonesboro Zone 09 Totals:					64.9	40.9	1,485.7	10.0

Jonesboro Zone 10A Applications								
June 2025	06/23/2025	Jonesboro	Permanone 30-30 (General Use) (432-1235)	1:5	42.7	31.8	1,155.2	8.0
	06/27/2025	Jonesboro	Permanone 30-30 (General Use) (432-1235)	1:5	33.0	23.7	862.8	7.0
Total Permanone 30-30 (General Use) Applied: 15.0								
June 2025	06/02/2025	Jonesboro	CSI 30-30 (53883-298)	1:5	34.0	29.0	1,054.4	6.0
Total CSI 30-30 Applied: 6.0								
Jonesboro Zone 10A Totals:					109.7	84.5	3,072.4	21.0

Jonesboro Zone 10B Applications

Month	Date	Municipality	Chemical	Mix Ratio	Trip Miles	Spray Miles	Spray Acres	Gallons Sprayed
June 2025	06/23/2025	Jonesboro	Permanone 30-30 (General Use) (432-1235)	1:5	64.1	44.5	1,616.6	12.0
	06/26/2025	Jonesboro	Permanone 30-30 (General Use) (432-1235)	1:5	33.2	16.1	584.3	3.0
	<i>Total Permanone 30-30 (General Use) Applied: 15.0</i>							
June 2025	06/02/2025	Jonesboro	CSI 30-30 (53883-298)	1:5	45.0	37.0	1,345.3	8.0
	06/03/2025	Jonesboro	CSI 30-30 (53883-298)	1:5	34.0	27.0	981.7	7.0
	06/17/2025	Jonesboro	CSI 30-30 (53883-298)	1:5	49.1	37.5	1,363.1	8.0
	06/19/2025	Jonesboro	CSI 30-30 (53883-298)	1:5	58.6	43.7	1,587.5	9.0
<i>Total CSI 30-30 Applied: 32.0</i>								
<i>Jonesboro Zone 10B Totals:</i>					284.0	205.7	7,478.5	47.0
<i>Grand Totals:</i>					1,936.3	1,500.5	54,558.6	359.2





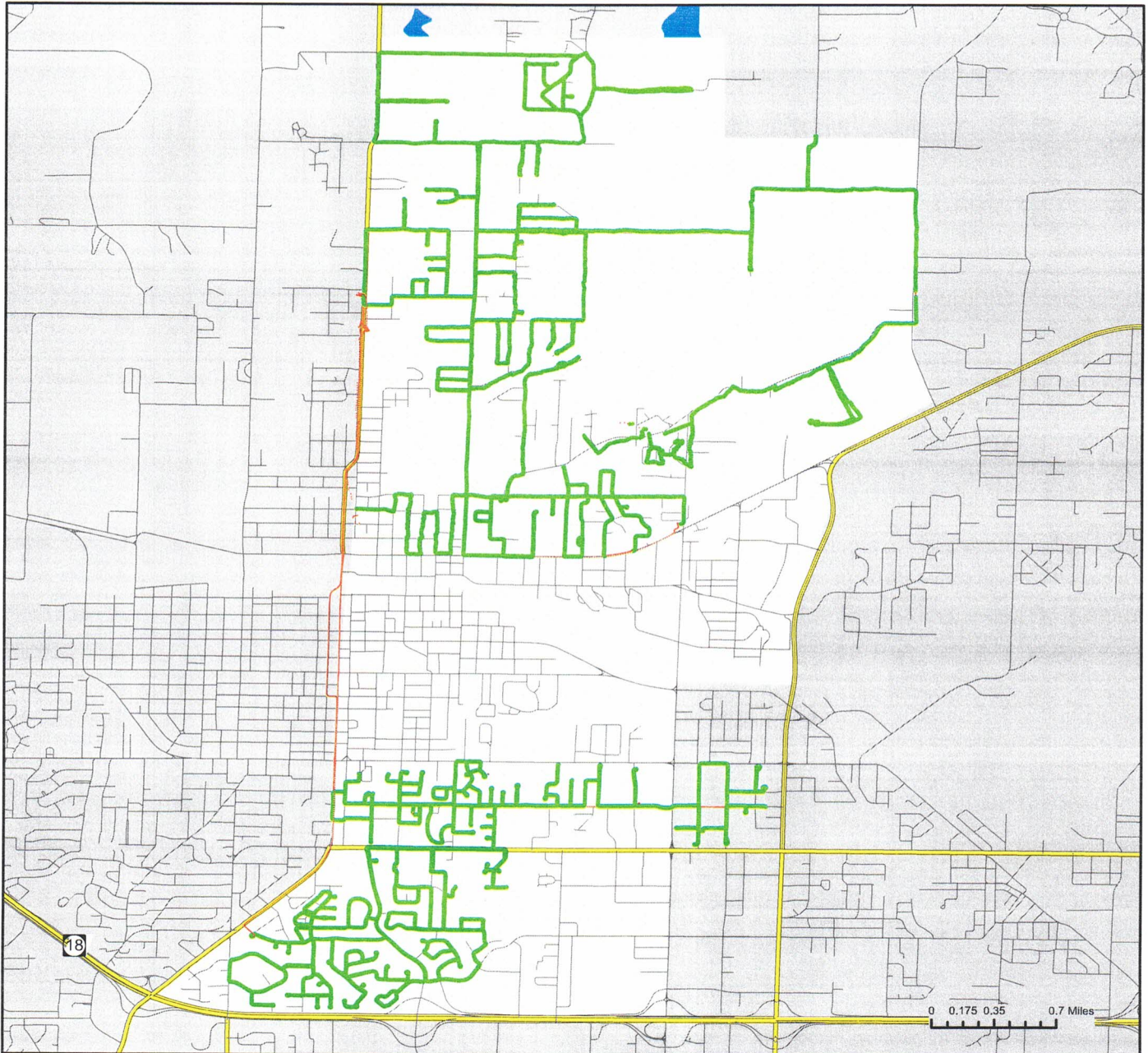
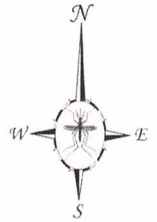
# Jonesboro, Arkansas

Ground Adulticide Application Date:  
June 16, 2025

## Sprayer Status

- Spray Off
- Spray On

Chemical: CSI 30-30  
Quantity Used: 25.2 gal  
Miles Treated: 68.6  
Acres Treated: 2,495.1



VDCI  
1320 Brookland Dr., Suite H  
Little Rock, AR 72202

These map products were developed for use by VDCI for its internal purposes only and were not designed or intended for general use by members of the public. VDCI makes no representation or warranty as to its accuracy, timeliness, or completeness, and in particular, its accuracy in labeling or displaying dimensions, contours, property boundaries, or placement or location of any map features thereon. © 2025 VDCI. All rights reserved.





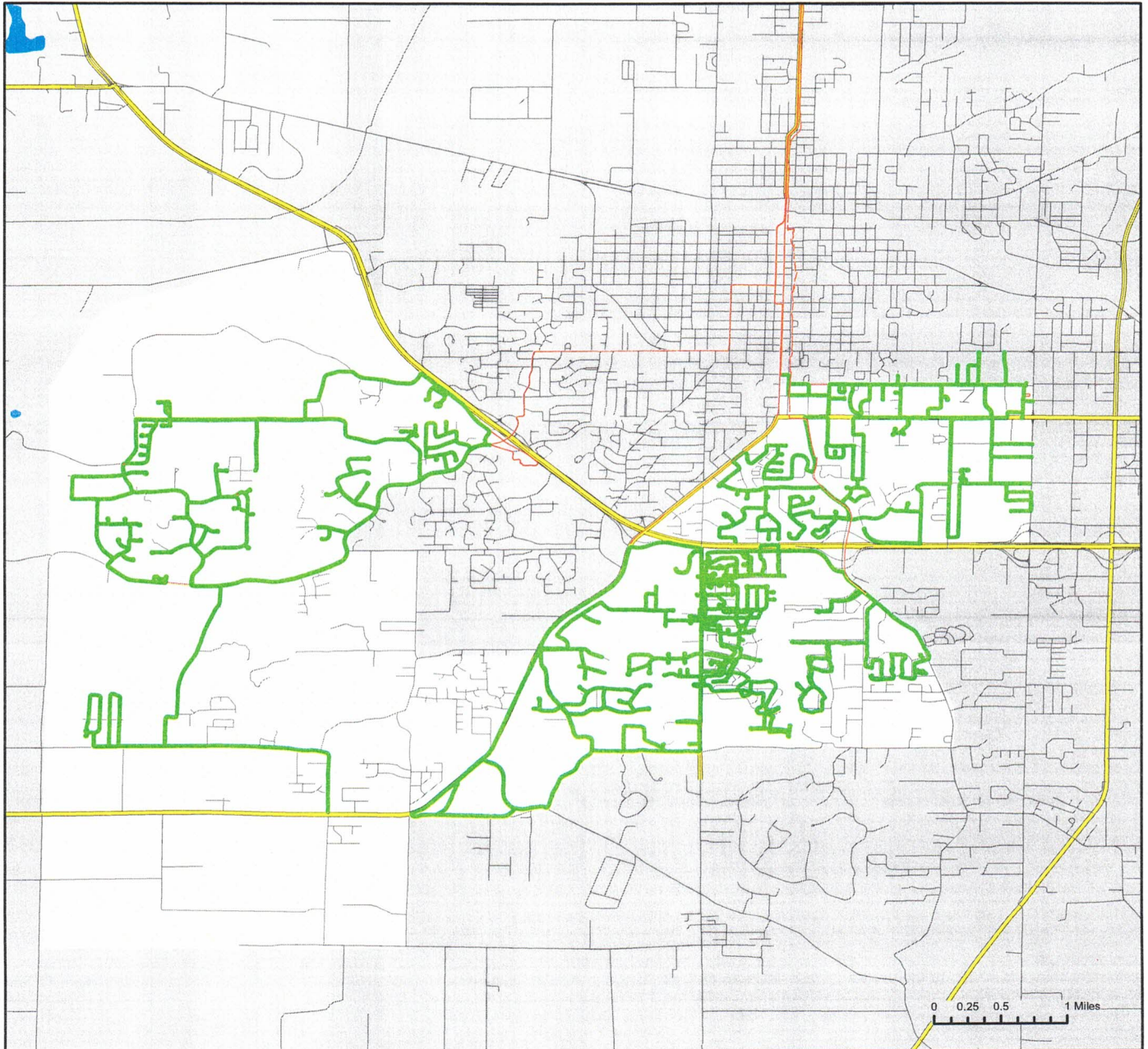
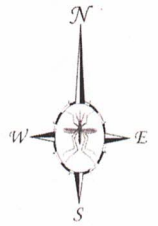
# Jonesboro, Arkansas

Ground Adulticide Application Date:  
June 25, 2025

## Sprayer Status

- Spray Off
- Spray On

Chemical: Permanone 30-30  
Quantity Used: 35.8 gal  
Miles Treated: 108.3  
Acres Treated: 3,936.9



VDCI  
1320 Brookland Dr., Suite H  
Little Rock, AR 72202

These map products were developed for use by VDCI for its internal purposes only and were not designed or intended for general use by members of the public. VDCI makes no representation or warranty as to its accuracy, timeliness, or completeness, and in particular, its accuracy in labeling or displaying dimensions, contours, property boundaries, or placement or location of any map features thereon. © 2025 VDCI. All rights reserved.