

Vector Disease Control, Inc.

## Mosquito Surveillance and Control Report

for the

# City of Jonesboro

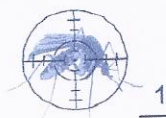
## June 2012

2221 N. Church St. Jonesboro, AR 72401

T-870.933.6939 F- 870.933.0122

[www.vdci.net](http://www.vdci.net)





## ***City of Jonesboro Activity Report***

**June 2012**

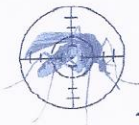
Vector Disease Control, Inc. (VDCI) provides a proven, scientific approach to mosquito control for the city of Jonesboro. VDCI's operations include larval and adult mosquito surveillance followed by the application of larvicides and adulticides. In addition, our office responds to service requests from the public.

### **Mosquito Surveillance**

VDCI has utilized a total of thirteen (13) New Jersey light traps placed in residential and recreational areas throughout Jonesboro during this reporting period. These traps collected an average of 29.77 mosquitoes per trap night (2,750 total mosquitoes) during this time. There have been a total of 2 mosquito species collected, with *Anopheles quadrimaculatus* being the most predominant species.

### **Larval Control Activity**

Permanent water, flood water, artificial containers, and drainage system sites are inspected for larval mosquito breeding on a regular basis. In total, 5 site inspections found the presence of mosquito larvae. As a result of these inspections 3.25 pounds of the larvicide Aquabac 200G was applied to these mosquito breeding sites. Additionally, VDCI is continuing to eliminate breeding habitats for artificial container mosquitoes by targeting bird baths, buckets, tires, etc.



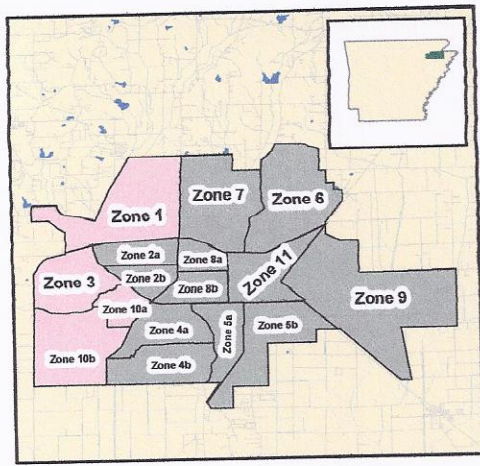
## **Adult Mosquito Control Activity**

In response to community events and mosquito surveillance data, VDCI applied the adulticide on 18 truck nights for this reporting period. All adulticide ULV applications were made with truck-mounted ULV units equipped with GPS-enabled monitors. During this report period, a total of 2,235.20 spray miles ( 79,932.35acres) were treated with a total of 293 gallons of adulticide in residential and recreational areas. In addition to routine truck spraying, VDCI has responded to 185 service requests and adulticided for all parks and any special events, including softball and soccer tournaments, throughout the month.

## **Summary**

During this reporting period, VDCI has continued to provide exceptional control of larval and adult mosquito populations. VDCI will remain diligent in our surveillance and control activities to prevent a significant increase in the mosquito population. Based on recent weather conditions VDCI expects the trend of routine adulticiding and larviciding to continue. However, if VDCI detects a significant rise in the mosquito population we will increase larval and adult control. As always, VDCI welcomes residents with any mosquito-related questions or concerns to contact VDCI's Jonesboro office directly at 870.933.6939.





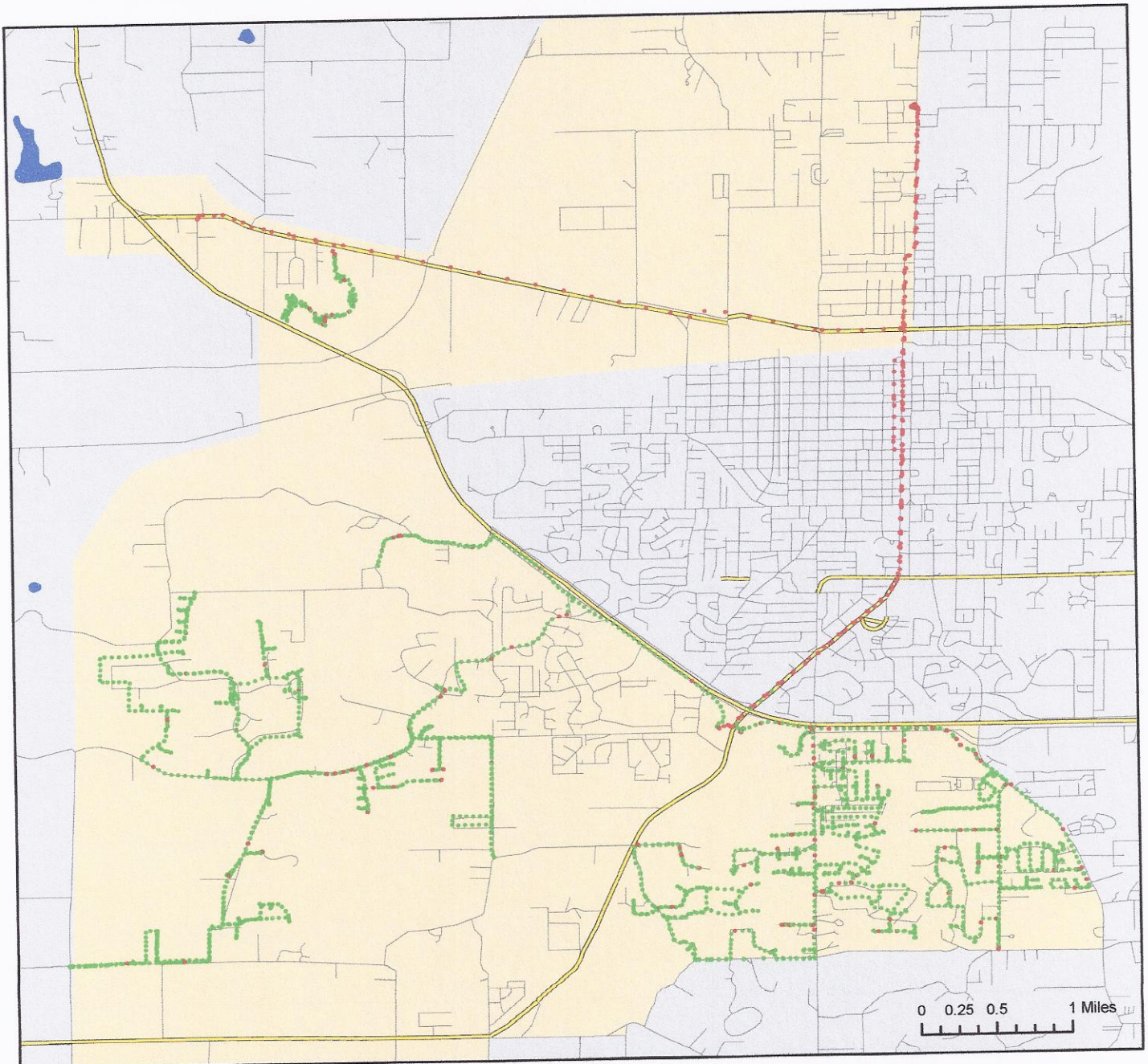
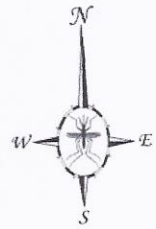
# The City of Jonesboro, Arkansas

Ground Adulticide Application Date:  
June 5, 2012

## Sprayer Status

- Spray Off
- Spray On

Chemical: Evoleur 30-30  
Quantity Used: 12.2 gal  
Miles Treated: 69.5  
Acres Treated: 2,520.0



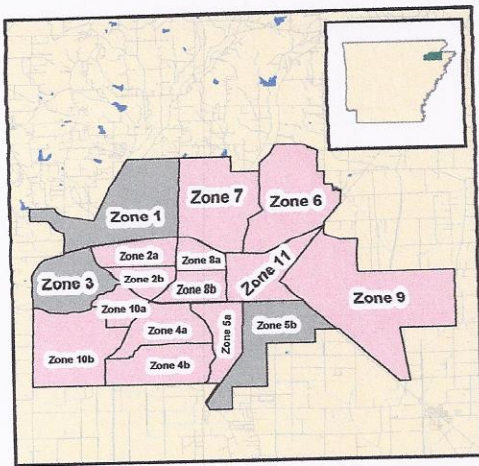
Vector Disease Control  
1320 Brookland Dr., Suite H  
Little Rock, AR 72202

These map products were developed for use by VDCI for its internal purposes only and were not designed or intended for general use by members of the public. VDCI makes no representation or warranty as to its accuracy, timeliness, or completeness, and in particular, its accuracy in labeling or displaying dimensions, contours, property boundaries, or placement or location of any map features thereon. © 2012 VDCI. All rights reserved.



# The City of Jonesboro, Arkansas

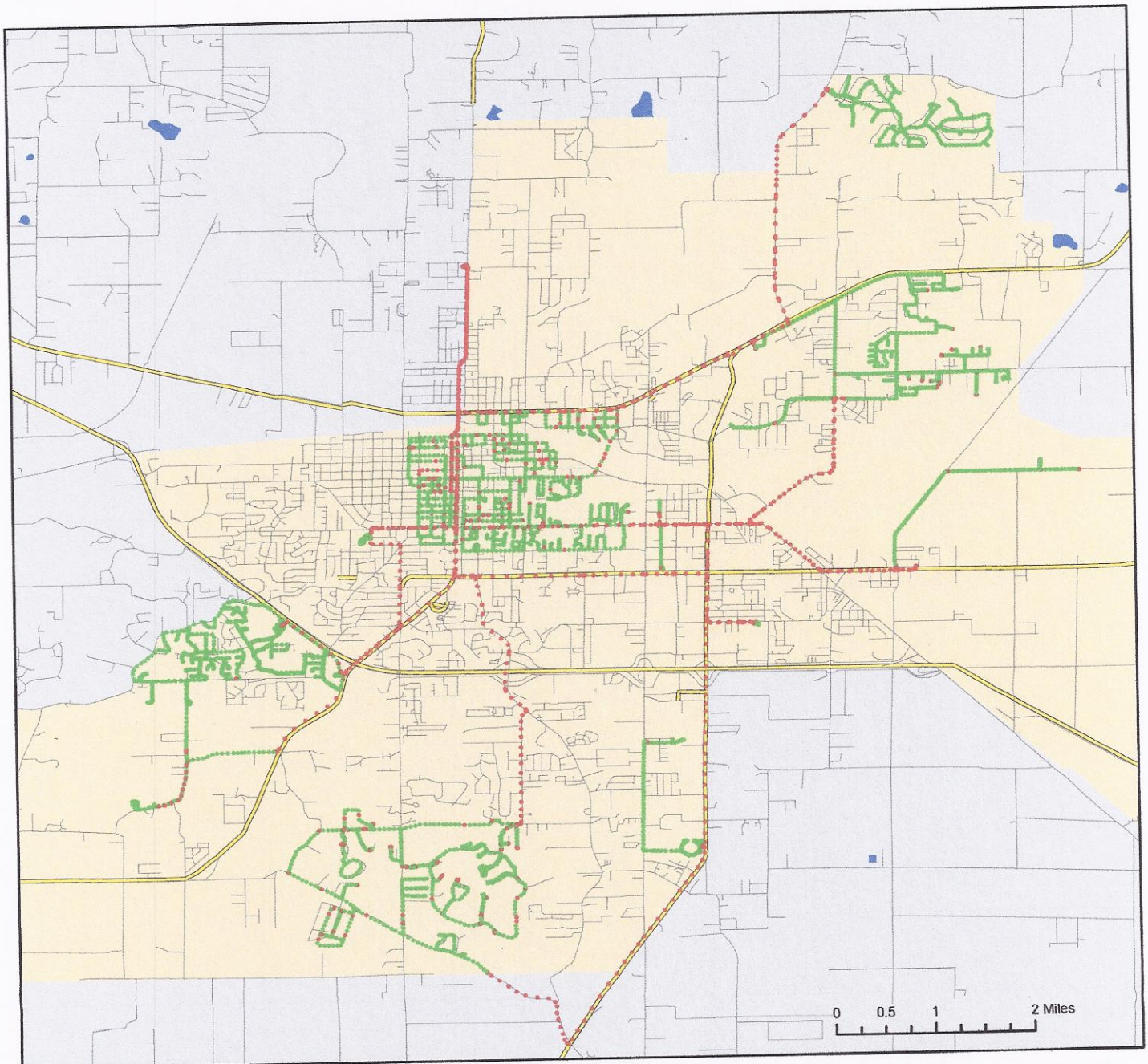
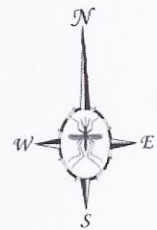
Ground Adulticide Application Date:  
June 13, 2012



## Sprayer Status

- Spray Off
- Spray On

Chemical: Evoleur 30-30  
Quantity Used: 32.1 gal  
Miles Treated: 144.5  
Acres Treated: 5,236.0



0 0.5 1 2 Miles



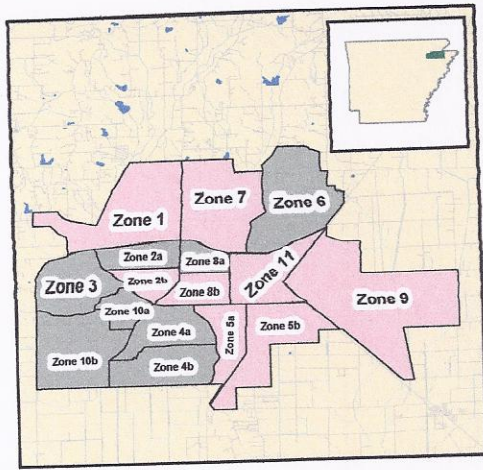
Vector Disease Control  
1320 Brookland Dr., Suite H  
Little Rock, AR 72202

These map products were developed for use by VDCI for its internal purposes only and were not designed or intended for general use by members of the public. VDCI makes no representation or warranty as to its accuracy, timeliness, or completeness, and in particular, its accuracy in labeling or displaying dimensions, contours, property boundaries, or placement or location of any map features thereon. © 2012 VDCI. All rights reserved.



# The City of Jonesboro, Arkansas

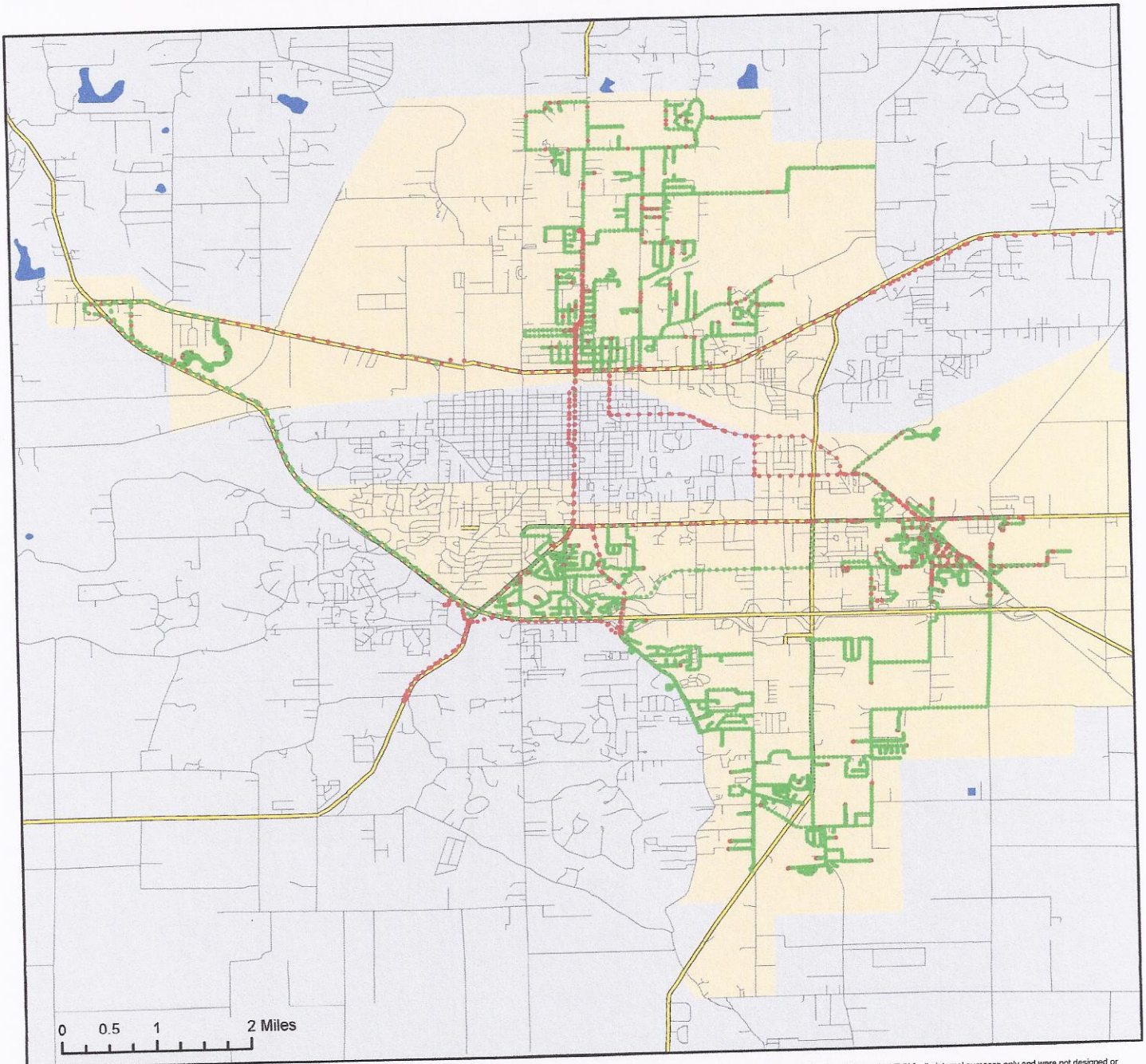
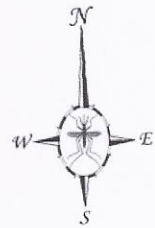
Ground Adulticide Application Date:  
June 21, 2012



## Sprayer Status

- Spray Off
- Spray On

Chemical: Evoleur 30-30  
Quantity Used: 20.0 gal  
Miles Treated: 110.4  
Acres Treated: 4,001.0



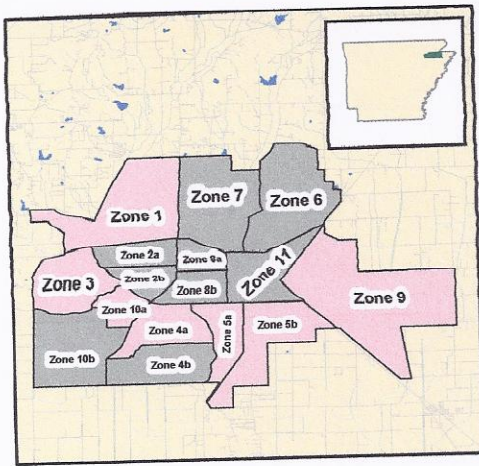
Vector Disease Control  
1320 Brookland Dr., Suite H  
Little Rock, AR 72202

These map products were developed for use by VDCI for its internal purposes only and were not designed or intended for general use by members of the public. VDCI makes no representation or warranty as to its accuracy, timeliness, or completeness, and in particular, its accuracy in labeling or displaying dimensions, contours, property boundaries, or placement or location of any map features thereon. © 2012 VDCI. All rights reserved.



# The City of Jonesboro, Arkansas

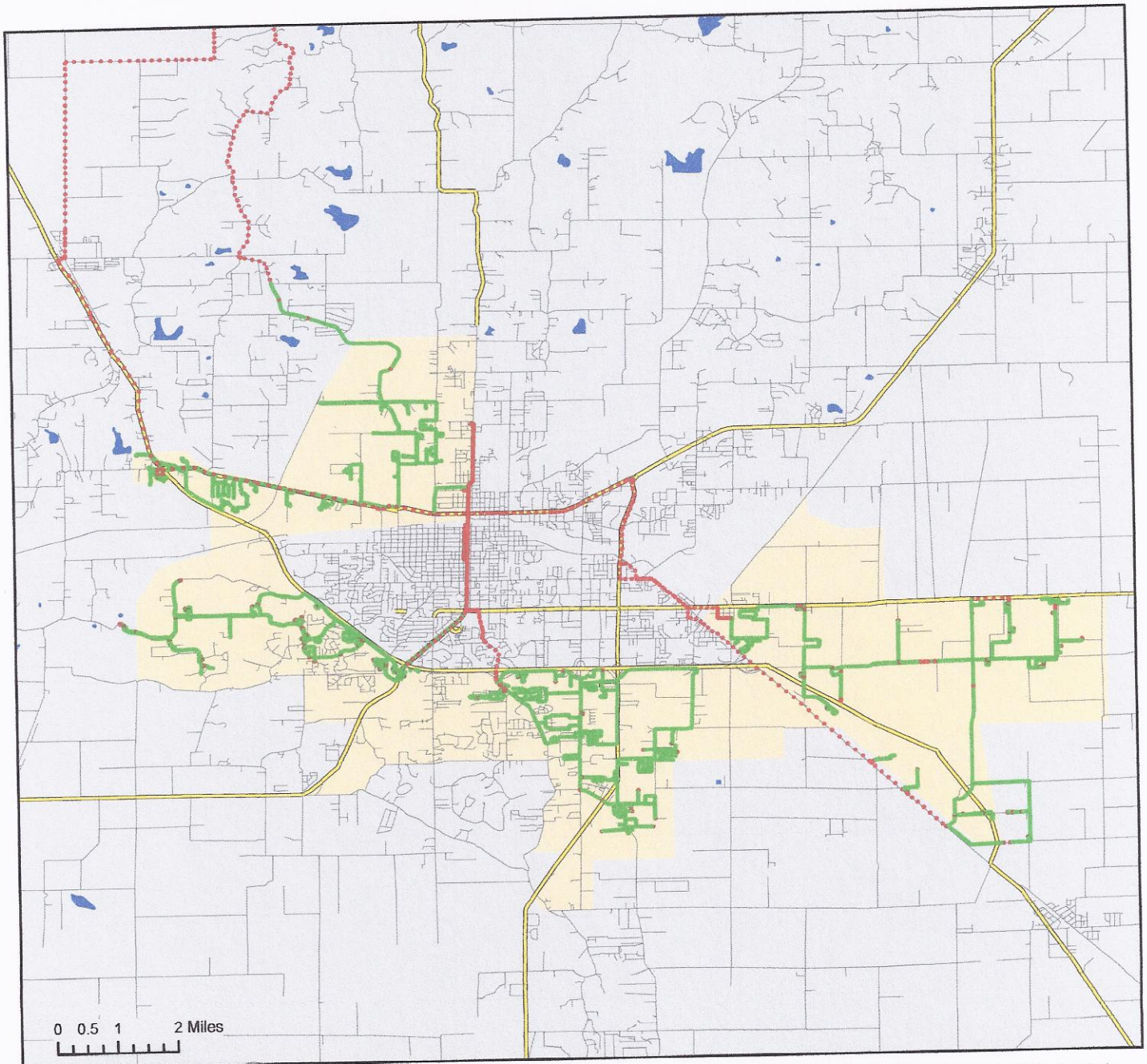
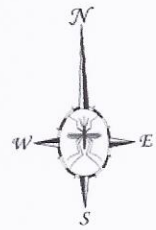
Ground Adulticide Application Date:  
June 23, 2012



## Sprayer Status

- Spray Off
- Spray On

Chemical: Evoleur 30-30  
Quantity Used: 22.4 gal  
Miles Treated: 98.2  
Acres Treated: 3,519.0



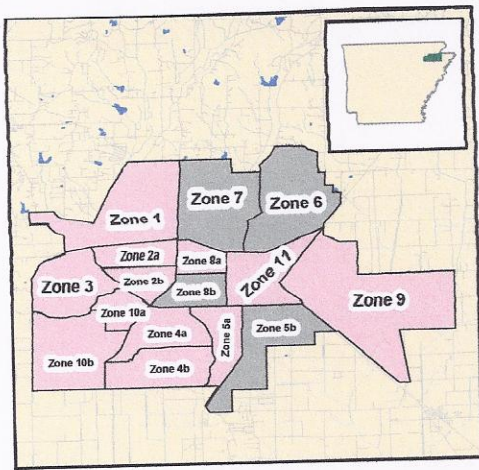
Vector Disease Control  
1320 Brookland Dr., Suite H  
Little Rock, AR 72202

These map products were developed for use by VDCI for its internal purposes only and were not designed or intended for general use by members of the public. VDCI makes no representation or warranty as to its accuracy, timeliness, or completeness, and in particular, its accuracy in labeling or displaying dimensions, contours, property boundaries, or placement or location of any map features thereon. © 2012 VDCI. All rights reserved.



# The City of Jonesboro, Arkansas

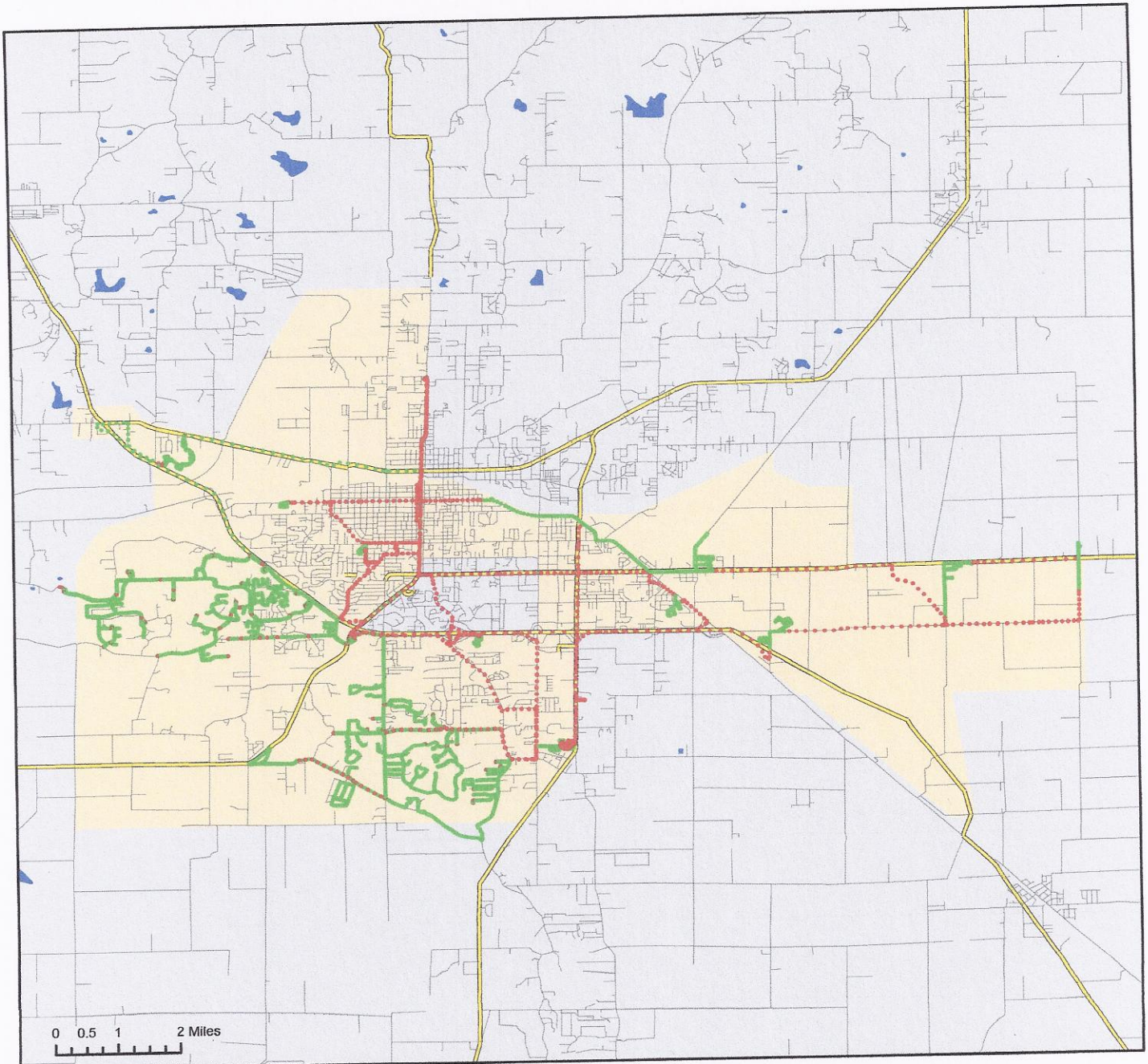
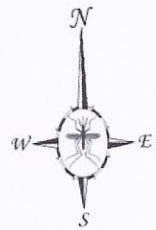
Ground Adulticide Application Date:  
June 29, 2012



## Sprayer Status

- Spray Off
- Spray On

Chemical: Kontrol 31-67  
Quantity Used: 21.6 gal  
Miles Treated: 95.5  
Acres Treated: 3,460.0

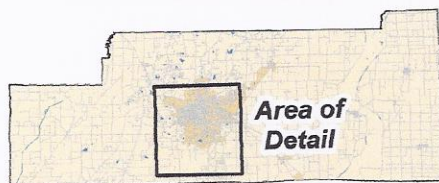


Vector Disease Control  
1320 Brookland Dr., Suite H  
Little Rock, AR 72202

These map products were developed for use by VDCI for its internal purposes only and were not designed or intended for general use by members of the public. VDCI makes no representation or warranty as to its accuracy, timeliness, or completeness, and in particular, its accuracy in labeling or displaying dimensions, contours, property boundaries, or placement or location of any map features thereon. © 2012 VDCI. All rights reserved.



## Craighead County



# The City of Jonesboro, Arkansas

Aerial Adulticide Application Date:  
June 23, 2012



**Flight Line**

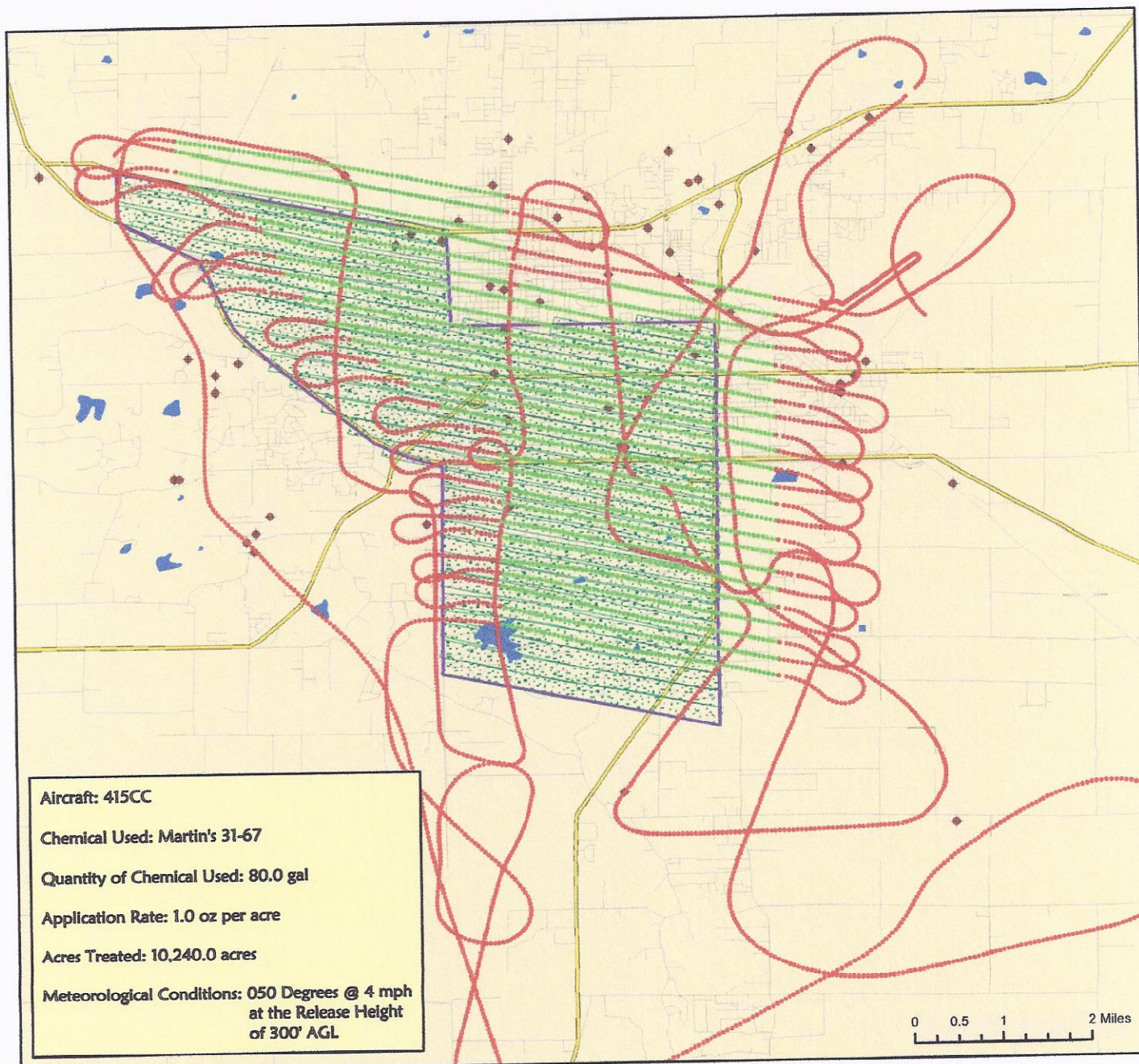
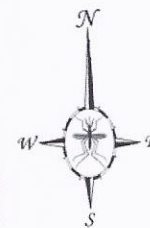
Spray Off

Spray On

Towers

Spray Offset

Spray Blocks



Vector Disease Control  
1320 Brookwood Dr., Suite H  
Little Rock, AR 72202

These map products were developed for use by VDCI for its internal purposes only and were not designed or intended for general use by members of the public. VDCI makes no representation or warranty as to its accuracy, timeliness, or completeness, and in particular, its accuracy in labeling or displaying dimensions, contours, property boundaries, or placement or location of any map features thereon. © 2012 VDCI. All rights reserved.