

① LIFE SAFETY PLAN  
1/16" = 1'-0"

CITY OF JONESBORO

- 2007 AFPC VOLUME I: ARKANSAS FIRE PREVENTION CODE: FIRE CODES
- 2007 AFPC VOLUME II: ARKANSAS FIRE PREVENTION CODE: BUILDING CODES
- 2006 AFC: ARKANSAS PLUMBING CODES
- 2010 AMC: ARKANSAS MECHANICAL CODES
- 2011 NEC: NATIONAL ELECTRICAL CODES
- 2006 AFAG: ARKANSAS FUEL GAS CODES
- 2004 IECC: INTERNATIONAL ENERGY CONSERVATION CODES
- 2006 IEBC: INTERNATIONAL EXISTING BUILDING CODES
- 2003 ICC/ANSI A117.1: AMERICAN NATIONAL STANDARDS (ADA REQUIREMENTS)

I, TIM W. COOPER, DO HEREBY CERTIFY THAT THESE PLANS AND SPECIFICATIONS HAVE BEEN PREPARED BY ME OR UNDER MY SUPERVISION. I FURTHER CERTIFY THAT, TO THE BEST OF MY KNOWLEDGE, THESE PLANS AND SPECIFICATIONS ARE AS REQUIRED BY LAW AND IN COMPLIANCE WITH THE ARKANSAS FIRE PREVENTION CODE FOR THE STATE OF ARKANSAS

*Tim W. Cooper* 5/13/13  
TIM W. COOPER, ARCHITECT DATED



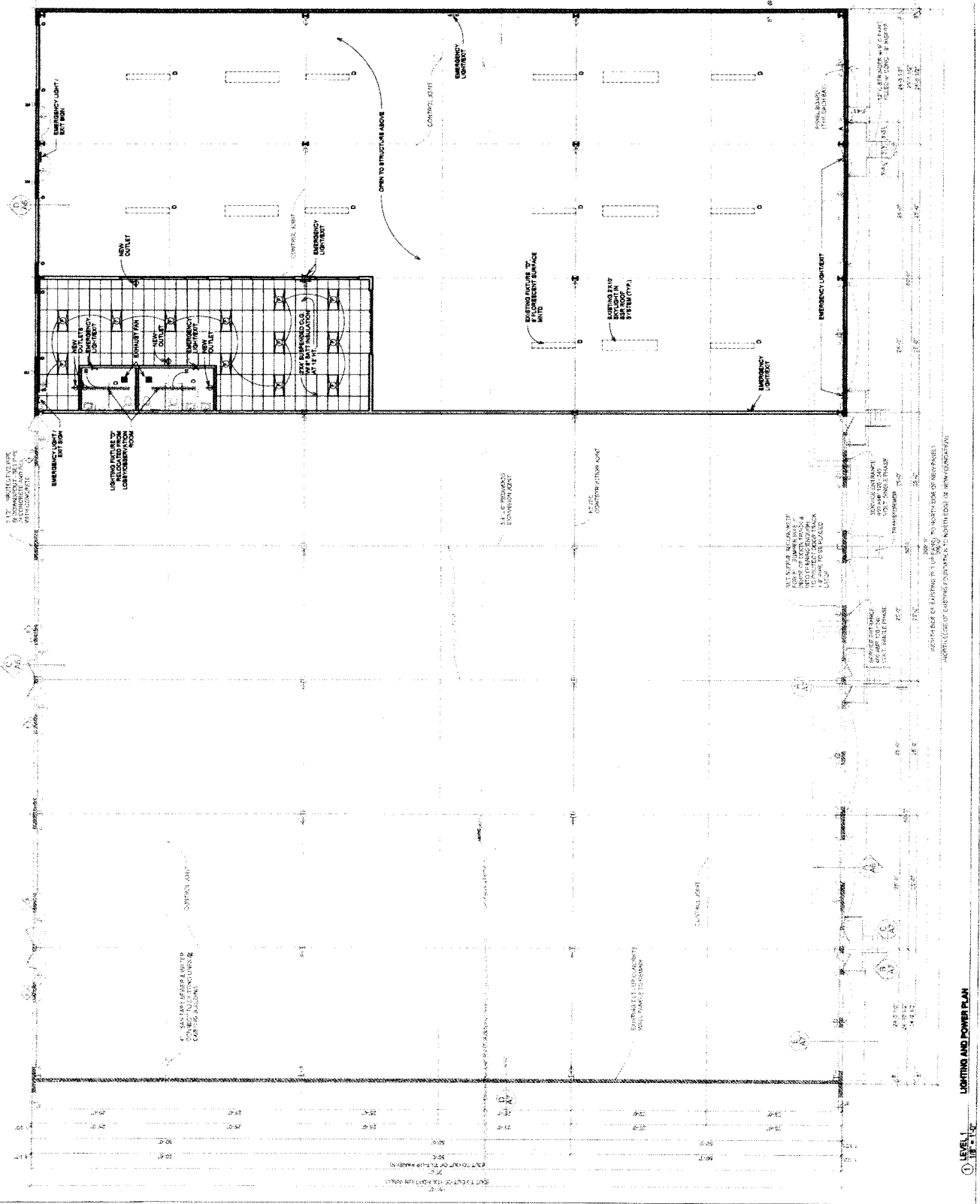
<p>OCCUPANCY GROUP: AREA LIMITATION: (Table 503) FRONTAGE AREA INCREASE MULTIPLIER: (506.20) AUTOMATIC SPRINKLER AREA INCREASE MULTIPLIER: (506.1) TOTAL ALLOWABLE FLOOR AREA: PROPOSED FLOOR AREA: TYPE OF CONSTRUCTION: (Table 503) NUMBER OF STORIES ALLOWED: (Table 503) PROPOSED NUMBER OF STORY: BUILDING HEIGHT ALLOWED: (Table 503) PROPOSED BUILDING HEIGHT: OCCUPANCY LOAD: (Table 1004.1.1) PROPOSED OCCUPANT LOAD: EGRESS WIDTH REQUIRED: (Table 1005.1) EGRESS WIDTH PROVIDED: MIN. NUM. OF REQ. PLUMBING FIXTURES: (Table 2902.1) PLUMBING FIXTURES PROVIDED:</p>	<p>ASSEMBLY GROUP A3 6000 SQ. FT. 150% 300% 21,000 SQ. FT. 11,250 SQ. FT. TYPE V 1 1 40' 22' 50 SQ. FT./PERSON 11,250/50= 225 PERSONS 0.15 in. per occupant: 225 occupants x 0.15"=33.75" 216 inches total TOILETS: Male- 1/125 Female- 1/65 LAV.: 1/200 Men=1 toilet, 1 urinal, 1 lav. Female=2 toilets, 2 lav.</p>
---	--

**WILLOW CREEK TENNANT FINISH OUT**  
4502 ACCESS ROAD JONESBORO , ARKANSAS 13 MAY 2013

- NOTES:**
1. TYPE "E" LIGHTS SHALL BE ON ONE CIRCUIT.
  2. EMERGENCY LIGHTS SHALL BE ON ONE CIRCUIT.
  3. TOILET RECEPTACLES SHALL BE ON ONE CIRCUIT.
  4. TOILET LIGHTS AND EXHAUST FANS SHALL BE ON ONE CIRCUIT. THE ELECTRICAL JURISDICTION DOES NOT ALLOW FANS TO BE ON LIGHT CIRCUIT. FANS SHALL BE ON SEPARATE CIRCUIT.



**MEP ENGINEER:**  
 RANDY D. HENARD ENGINEER  
 13785 WALL IN MOUNTAIN ROAD  
 WEST FORK, AR 72774  
 (501) 928-1111  
 (479) 841-7738



① LEVEL 1 LIGHTING AND POWER PLAN

## Terry Adams

---

**From:** Craig Davenport  
**Sent:** Wednesday, May 15, 2013 7:27 AM  
**To:** Terry Adams  
**Subject:** RE: 4502 Access Rd  
**Attachments:** image001.jpg

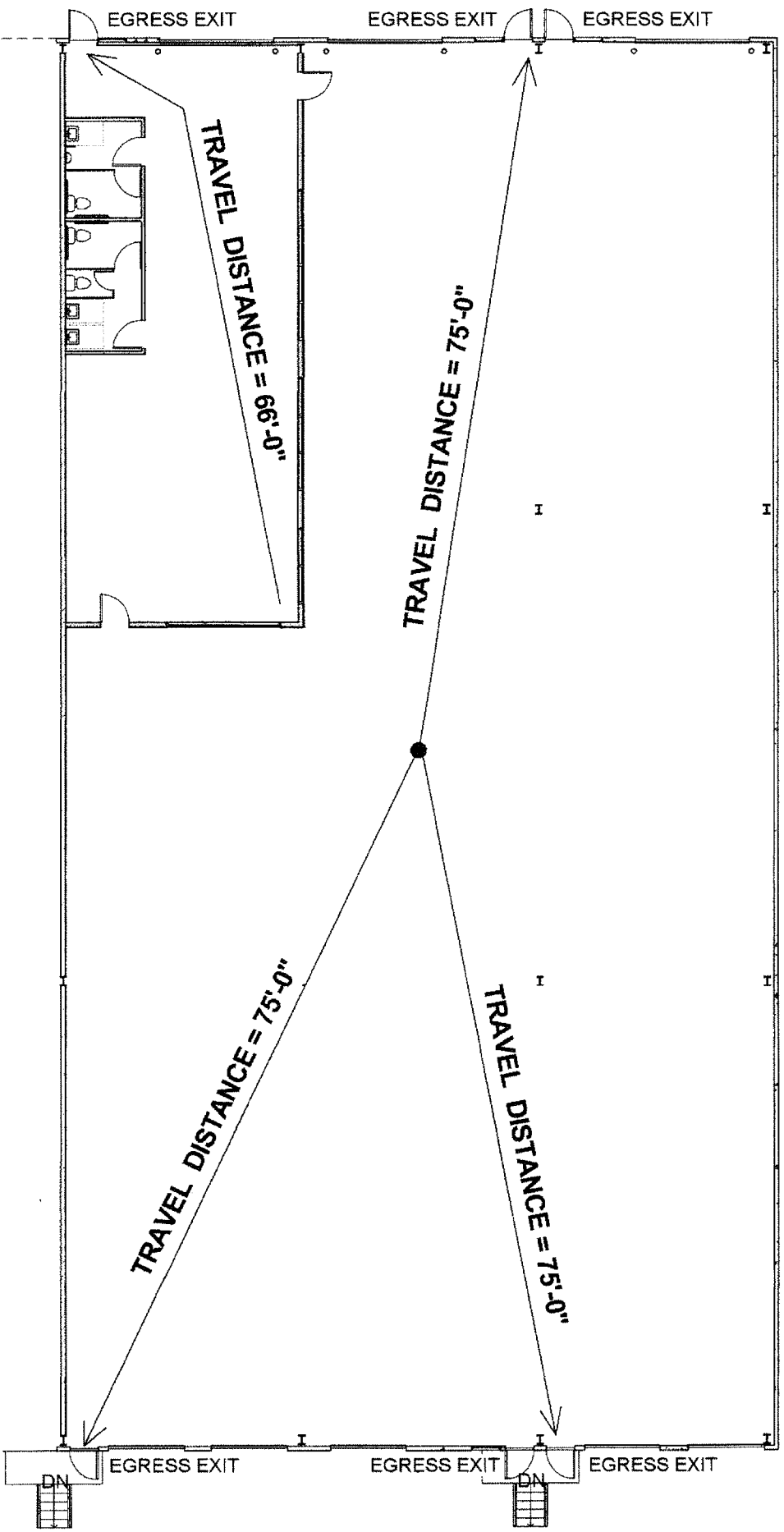
This will suffice.

**From:** Terry Adams  
**Sent:** Tuesday, May 14, 2013 1:42 PM  
**To:** Craig Davenport  
**Subject:** 4502 Access Rd

Craig this is in reference to the plan we reviewed last week on Willow Creek Tenant finish out. You ask for egress and occupancy load along with me, will this suffice for you I have all correct code data, and they are getting me my Electrical Engineer for the Electrical, if this works for you let me know and I will attach the info to our plans.

*Thank You*  
*Terry L. Adams*  
*Chief Building Official*  
*Certified Flood Manager*  
*City of Jonesboro*  
*Office Ph: 870-336-7194*  
*Cell Ph: 870-919-5426*  
*Fax Number: 870-933-4618*  
*[tadams@jonesboro.org](mailto:tadams@jonesboro.org)*





1 LIFE SAFETY PLAN  
1/16" = 1'-0"

CITY OF JONESBORO

- 2007 AFPC VOLUME I: ARKANSAS FIRE PREVENTION CODE: FIRE CODES
- 2007 AFPC VOLUME II: ARKANSAS FIRE PREVENTION CODE: BUILDING CODES
- 2006 AFC: ARKANSAS PLUMBING CODES
- 2010 AMC: ARKANSAS MECHANICAL CODES
- 2011 NEC: NATIONAL ELECTRICAL CODES
- 2006 AFAG: ARKANSAS FUEL GAS CODES
- 2004 IECC: INTERNATIONAL ENERGY CONSERVATION CODES
- 2006 IEBC: INTERNATIONAL EXISTING BUILDING CODES
- 2003 ICC/ANSI A117.1: AMERICAN NATIONAL STANDARDS (ADA REQUIREMENTS)

I, TIM W. COOPER, DO HEREBY CERTIFY THAT THESE PLANS AND SPECIFICATIONS HAVE BEEN PREPARED BY ME OR UNDER MY SUPERVISION. I FURTHER CERTIFY THAT, TO THE BEST OF MY KNOWLEDGE, THESE PLANS AND SPECIFICATIONS ARE AS REQUIRED BY LAW AND IN COMPLIANCE WITH THE ARKANSAS FIRE PREVENTION CODE FOR THE STATE OF ARKANSAS

*Tim W. Cooper*  
TIM W. COOPER, ARCHITECT

5/13/13  
DATED



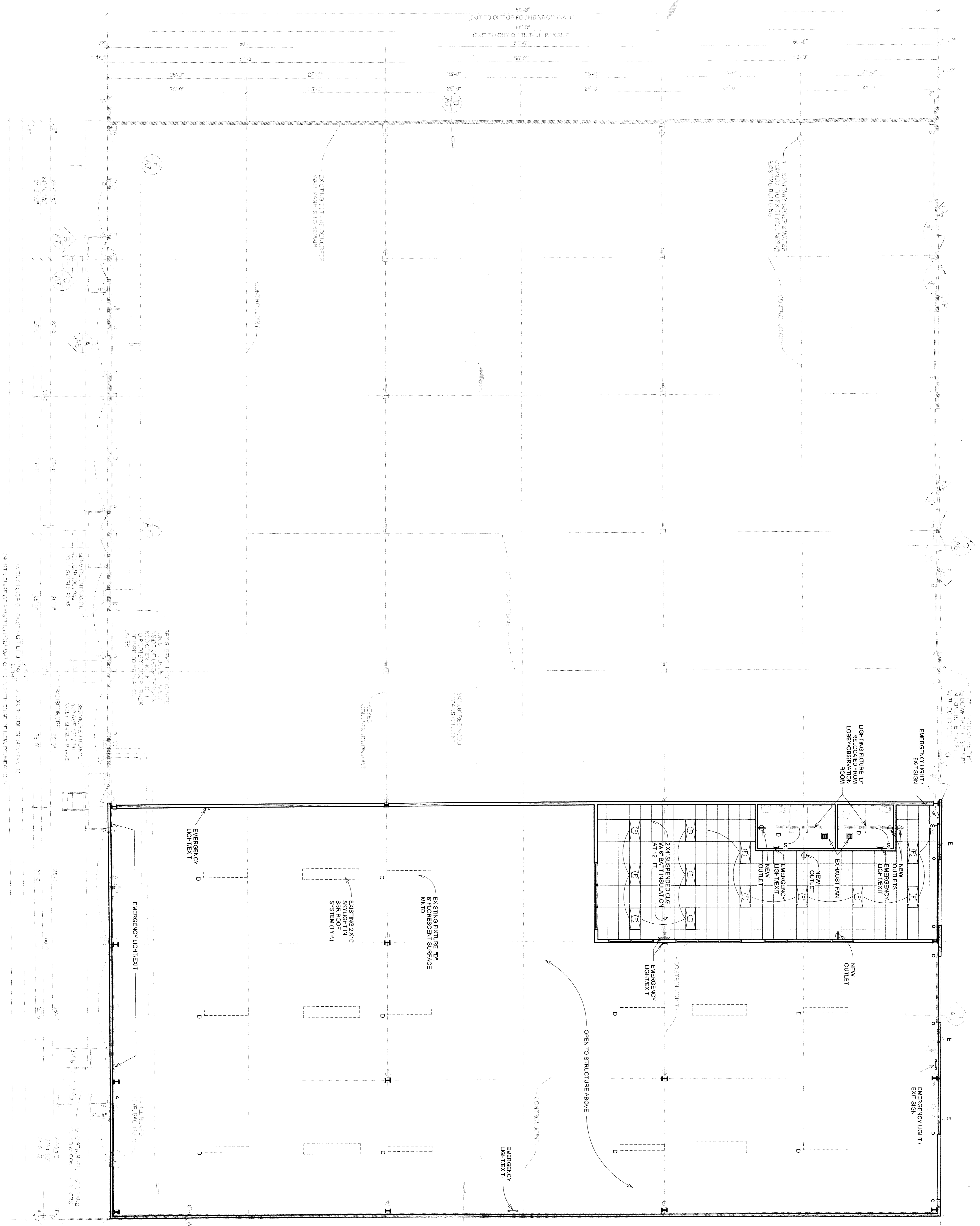
OCCUPANCY GROUP:  
 AREA LIMITATION: (Table 503)  
 FRONTAGE AREA INCREASE MULTIPLIER: (506.20)  
 AUTOMATIC SPRINKLER AREA INCREASE MULTIPLIER: (506.1)  
 TOTAL ALLOWABLE FLOOR AREA:  
 PROPOSED FLOOR AREA:  
 TYPE OF CONSTRUCTION: (Table 503)  
 NUMBER OF STORIES ALLOWED: (Table 503)  
 PROPOSED NUMBER OF STORY:  
 BUILDING HEIGHT ALLOWED: (Table 503)  
 PROPOSED BUILDING HEIGHT:  
 OCCUPANCY LOAD: (Table 1004.1.1)  
 PROPOSED OCCUPANT LOAD:  
 EGRESS WIDTH REQUIRED: (Table 1005.1)  
 EGRESS WIDTH PROVIDED:  
 MIN. NUM. OF REQ. PLUMBING FIXTURES: (Table 2902.1)  
 PLUMBING FIXTURES PROVIDED:

ASSEMBLY GROUP A3  
 6000 SQ. FT.  
 150%  
 300%  
 21,000 SQ. FT.  
 11,250 SQ. FT.  
 TYPE V  
 1  
 1  
 40'  
 22'  
 50 SQ. FT./PERSON  
 11,250/50= 225 PERSONS  
 0.15 in. per occupant: 225 occupants x 0.15"=33.75"  
 216 inches total  
 TOILETS: Male- 1/125 Female- 1/65 LAV.: 1/200  
 Men=1 toilet, 1 urinal, 1 lav. Female=2 toilets, 2 lav.

# WILLOW CREEK TENNANT FINISH OUT

4502 ACCESS ROAD JONESBORO , ARKANSAS

13 MAY 2013



- NOTES:**
1. TYPE "E" LIGHTS SHALL BE ON ONE CIRCUIT.
  2. EMERGENCY/EXIT LIGHTS SHALL BE ON ONE CIRCUIT.
  3. TOILET RECEPTACLES SHALL BE ON ONE CIRCUIT.
  4. TOILET LIGHTS AND EXHAUST FANS SHALL BE ON ONE CIRCUIT. IN THE EVENT LOCAL AUTHORITY HAVING JURISDICTION DOES NOT ALLOW FANS TO BE ON LIGHT CIRCUIT, FANS SHALL BE ON SEPARATE CIRCUIT.

**MEP ENGINEER:**  
 RANDY D. HEMARD ENGINEER  
 13785 WALLIN MOUNTAIN ROAD  
 WEST FORK, AR 72774  
 CONTACT: R.D. HEMARD  
 (479) 841-7736



**PROJECT NAME:** WILLOW CREEK TENANT FINISH OUT  
**DATE:** 5/14/2013  
**TIME:** 1:22:19 PM  
**CONTENTS:** Unnamed  
**SHEET NUMBER:** A103

**Tim Cooper Architect**  
 P.O. Box 1782 Fayetteville, AR 72702  
 Phone: 479.236.6629 Fax: 479.575.0074

**WILLOW CREEK TENANT FINISH OUT**  
 4502 ACCESS ROAD JONESBORO, ARKANSAS

REGARDING THE SENSITIVE ISSUES OF CONFIDENTIALITY AND COPYRIGHT, ANY REQUEST FOR THE RELEASE, OR REPRODUCTION OF THESE DRAWINGS MUST BE APPROVED BY COOPER ARCHITECTS, P.A.



**CODE DATA**

APPLICABLE CODES: CITY OF JONESBORO  
 2004 ARKANSAS ENERGY CODE  
 2007 ARKANSAS FIRE PREVENTION CODE  
 2008 INTL BUILDING CODE  
 2008 INTL RESIDENTIAL CODE  
 2008 NATIONAL ELECTRICAL CODE  
 2008 ARKANSAS PLUMBING CODE  
 2003 ARKANSAS MECHANICAL CODE  
 2006 ARKANSAS STATE FUEL GAS CODE

PROJECT: WILLOW CREEK PHASE 7 FINISH OUT  
 ADDRESS: 4502 ACCESS ROAD JONESBORO, AR  
 PROJECT SQUARE FOOTAGE: 11,250 SQ. FT.  
 HEIGHT: 22'  
 STORIES: 1 STORY  
 OCCUPANCY AND SEPARATION: A-3  
 (CHAPTER 3 AND 5 OF THE IBC)

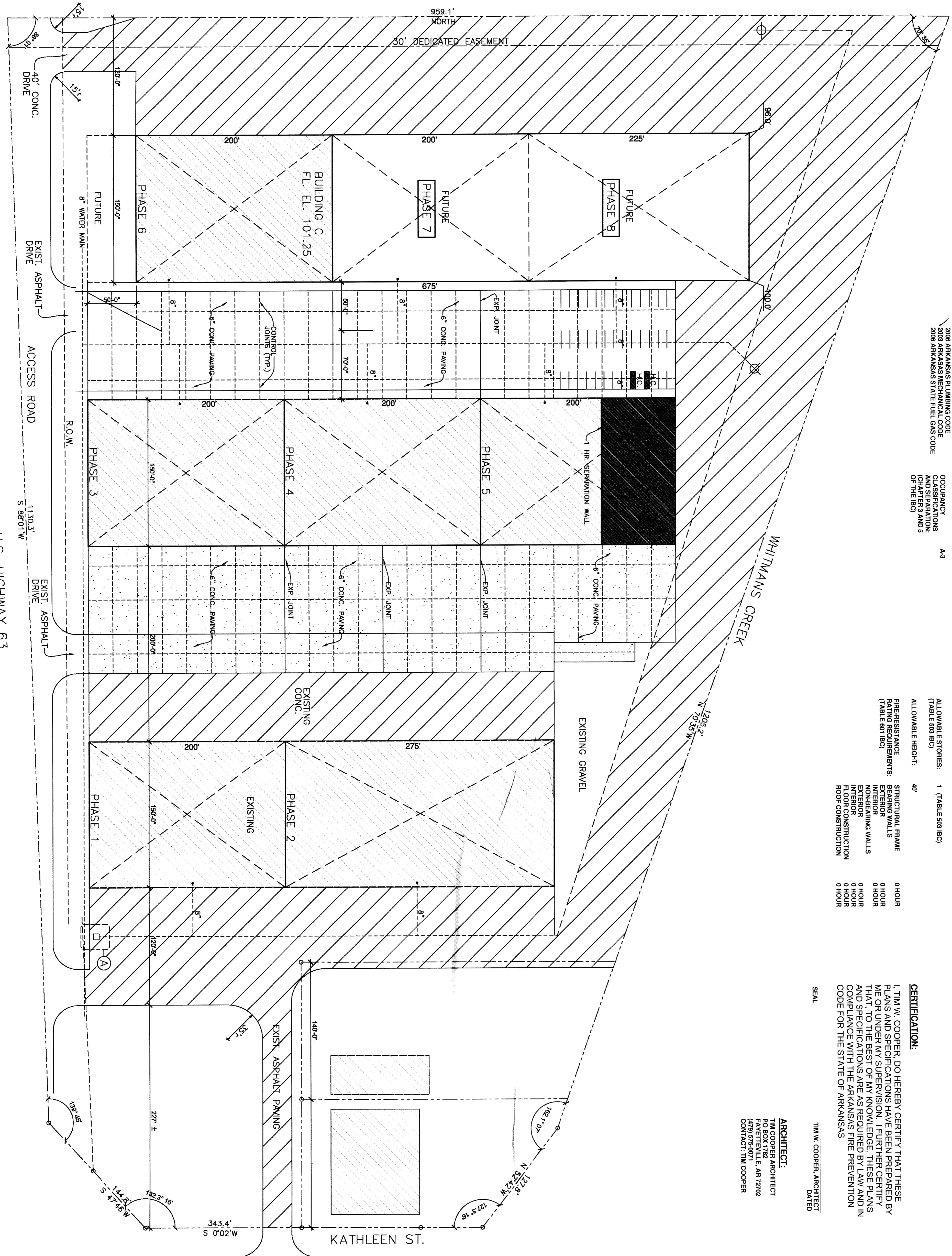
TYPE OF CONSTRUCTION:	ALLOWABLE AREA (TABLE 503 IBC)	ALLOWABLE HEIGHT:	ALLOWABLE STORIES:	SPRINKLERED (TABLE 503 IBC)	SPRINKLERED (TABLE 503 IBC)	SPRINKLERED (TABLE 503 IBC)
VB (SPRINKLED)	18,000 SQ. FT. (AREA MODIFICATION INCREASE ALLOWABLE)	40'	1 (TABLE 503 IBC)	SPRINKLERED (9,000)	SPRINKLERED (9,000)	SPRINKLERED (9,000)
FIRE-RESISTANCE STRUCTURAL FRAME						
EXTERIOR WALLS						
INTERIOR NON-BEARING WALLS						
EXTERIOR FLOOR CONSTRUCTION						
ROOF CONSTRUCTION						
0 HOUR						
0 HOUR						
0 HOUR						
0 HOUR						
0 HOUR						

INTERIOR FINISH (TABLE 903.5 IBC)	VERTICAL EXITS (TABLE 903.5 IBC)	CLASS A CLASS B CLASS C
SPRINKLER REQUIRED: YES	ROOMS AND SPACES	
FIRE ALARM REQUIRED: YES		

**CERTIFICATION:**  
 I, TIM W. COOPER, DO HEREBY CERTIFY THAT THESE PLANS AND SPECIFICATIONS HAVE BEEN PREPARED BY ME OR UNDER MY SUPERVISION. I FURTHER CERTIFY THAT TO THE BEST OF MY KNOWLEDGE, THESE PLANS AND SPECIFICATIONS ARE AS REQUIRED BY LAW AND IN COMPLIANCE WITH THE ARKANSAS FIRE PREVENTION CODE FOR THE STATE OF ARKANSAS

TIM W. COOPER, ARCHITECT  
 DATED

**ARCHITECT:**  
 TIM COOPER ARCHITECT  
 P.O. BOX 1782  
 FAYETTEVILLE, AR 72702  
 CONTACT: TIM COOPER



**DISCLAIMER:**  
 The preparation of the submitted drawings, specifications, and reports by the architect is based on the information provided by the client. The architect does not warrant the accuracy or completeness of the information provided. The architect is not responsible for any errors or omissions in the drawings, specifications, or reports. The architect is not responsible for any construction defects or delays. The architect is not responsible for any environmental or safety issues. The architect is not responsible for any legal or financial issues. The architect is not responsible for any other issues.

CITY OF JONESBORO  
 Jonesboro, AR  
 SP13-103  
 PLANNING ENGINEERING DATE  
 PRELIMINARY  
 AS NOTED  
 SITE PLAN



PROJECT NAME: WILLOW CREEK (PHASE 7)  
 DATE: 5/8/2013  
 TIME: 4:10:43 PM

SHEET NUMBER: A1

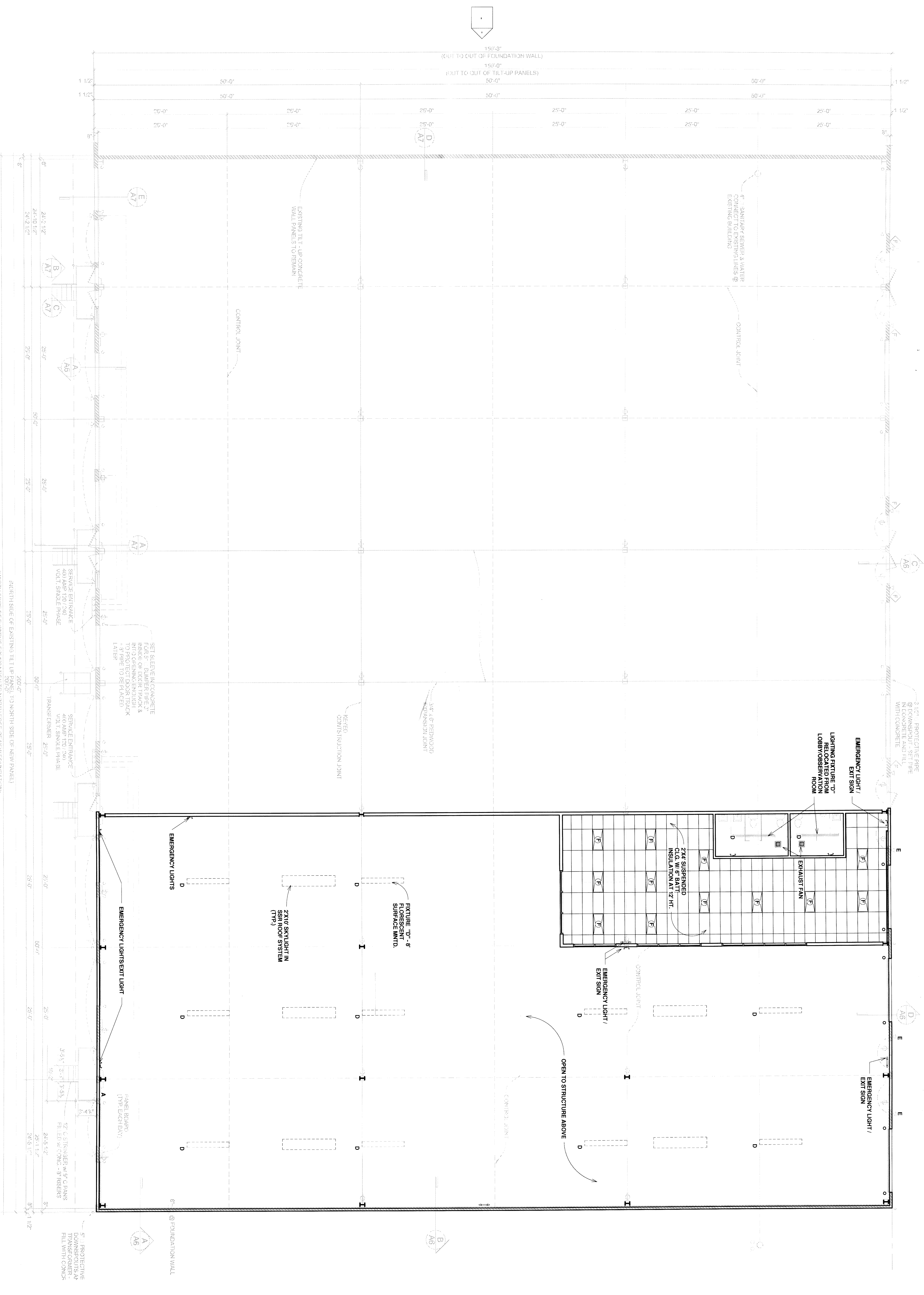
**Tim Cooper Architect**  
 P.O. Box 1782 Fayetteville, AR 72702  
 Phone: 479.236.6629 Fax: 479.575.0074

WILLOW CREEK (PHASE 7)  
 4502 ACCESS ROAD JONESBORO, AR

REGARDING THE SENSITIVE ISSUES OF CONFIDENTIALITY AND COPYRIGHT, ANY REQUEST FOR THE RELEASE, OR REPRODUCTION OF THESE DRAWINGS MUST BE APPROVED BY COOPER ARCHITECTS, P.A.







PROJECT NAME  
WILLOW CREEK  
(PHASE 7)

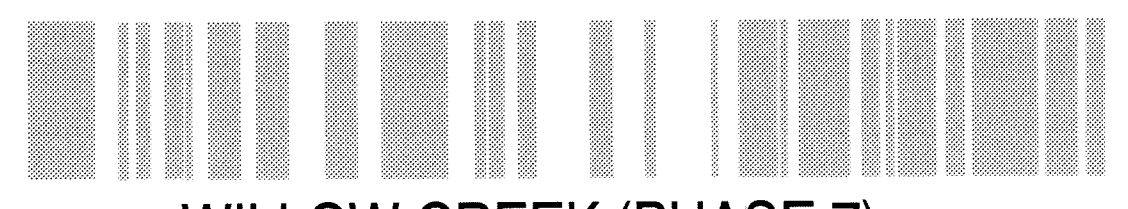
DATE  
5/8/2013  
4:10:51 PM

CONTENTS  
CEILING PLAN

SHEET NUMBER  
A3



**Tim Cooper Architect**  
P.O. Box 1782 Fayetteville, AR 72702  
Phone: 479.236.6629 Fax: 479.575.0074



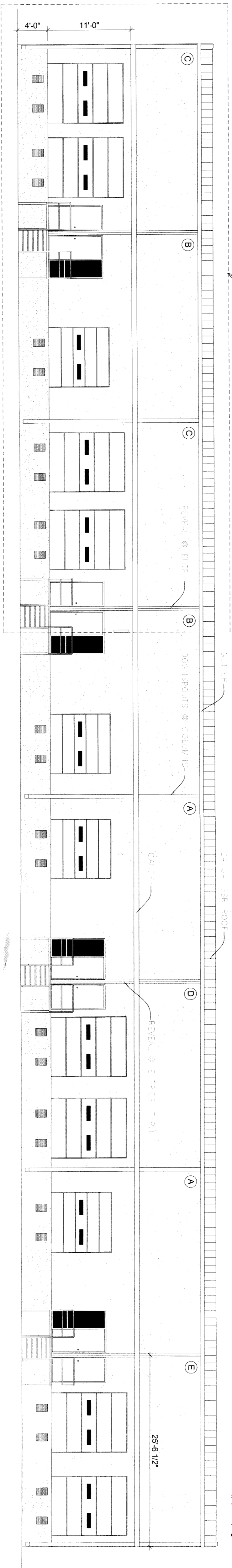
WILLOW CREEK (PHASE 7)

4502 ACCESS ROAD JONESBORO, AR

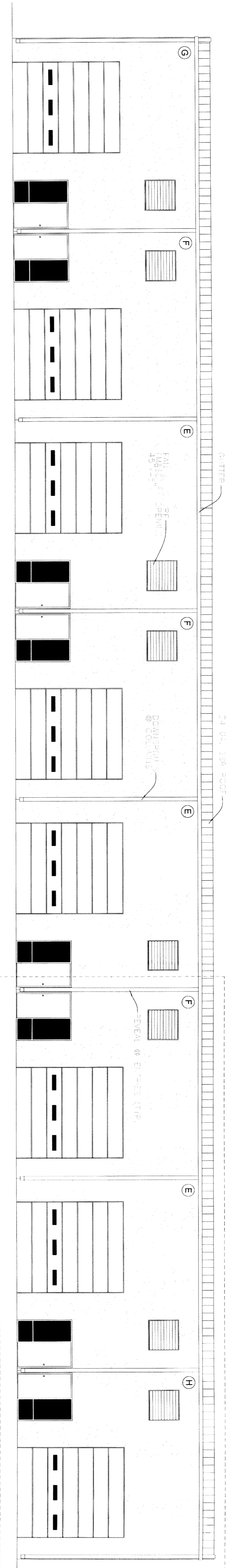


**PROPOSED TENNANT FINISH OUT**

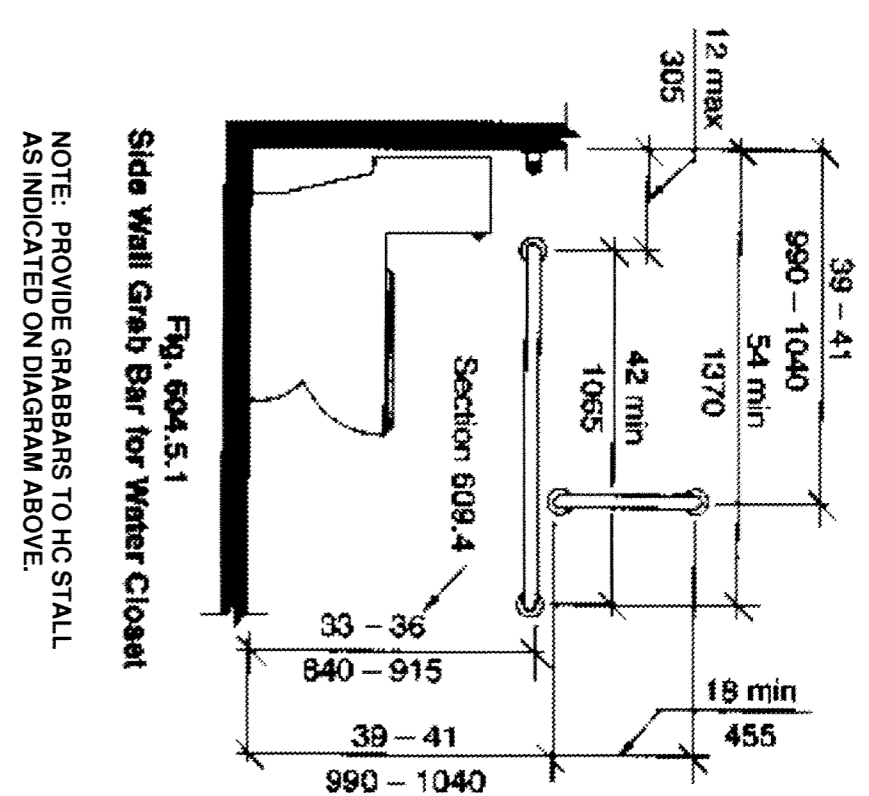
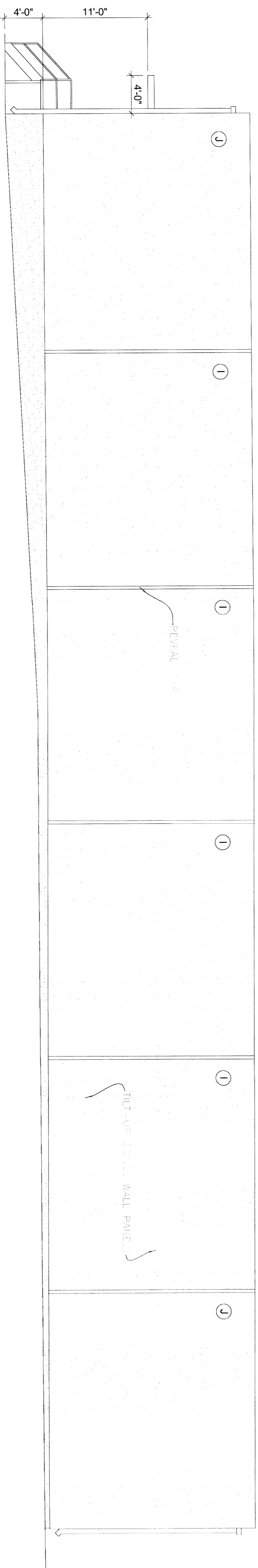
**WEST ELEVATION**



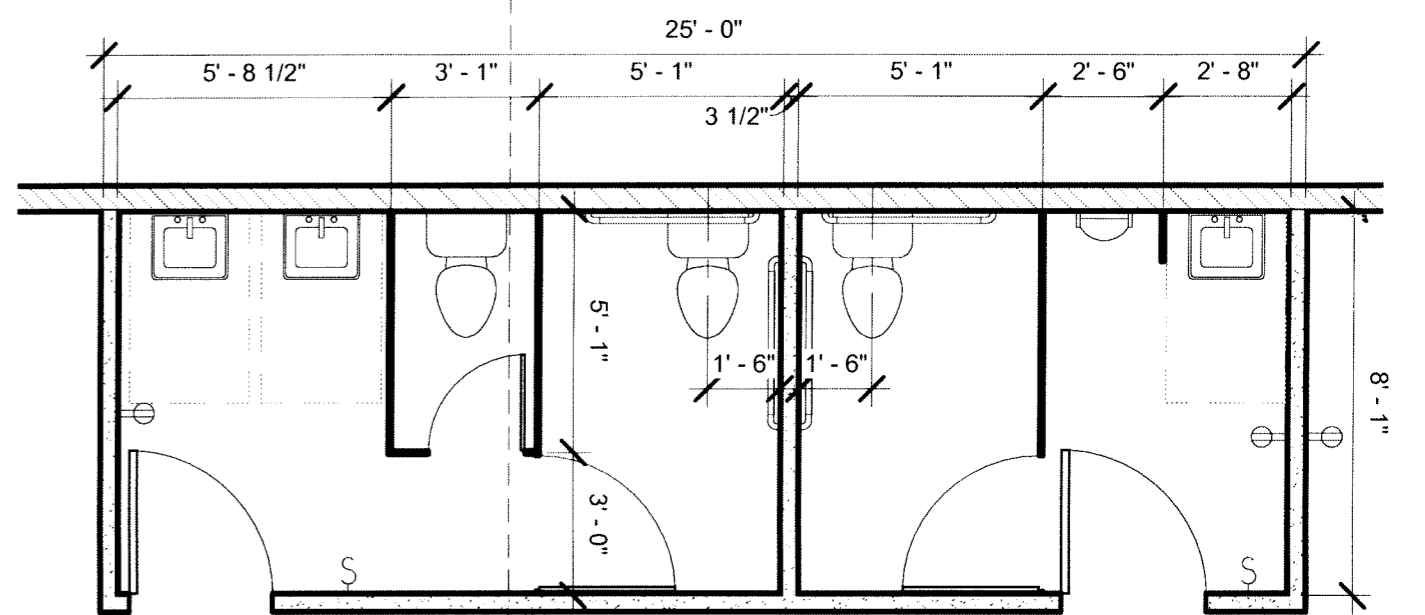
**EAST ELEVATION**



**NORTH ELEVATION**



1 Enlarged Bathroom Plan  
1/4" = 1'-0"

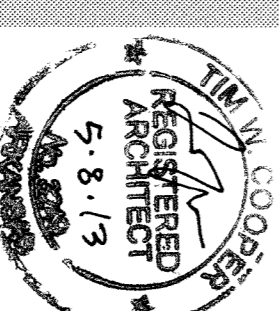


NOTE:  
TO INCLUDE MIRRORS  
AT LAV., TOILET PAPER DISPENSERS  
AT COMMODES. PROVIDE GRAB BARS  
AT H.C. STALLS.  
BATHROOM CEILING AT 9'-0\"/>

2 BUILDING ELEVATIONS  
1/8" = 1'-0"

A4

SHEET NUMBER  
PROJECT NAME  
WILLOW CREEK  
(PHASE 7)  
DATE  
5/8/2013  
4:10:52 PM  
CONTENTS  
ELEVATIONS



**Tim Cooper Architect**  
P.O. Box 1782 Fayetteville, AR 72702  
Phone: 479.236.6629 Fax: 479.575.0074

**WILLOW CREEK (PHASE 7)**  
4502 ACCESS ROAD JONESBORO, AR

REGARDING THE SENSITIVE ISSUES OF CONFIDENTIALITY AND COPYRIGHT, ANY REQUEST FOR THE RELEASE, OR REPRODUCTION OF THESE DRAWINGS MUST BE APPROVED BY COOPER ARCHITECTS, P.A.