

Floor plan
 SCALE: 1/8" = 1'-0"

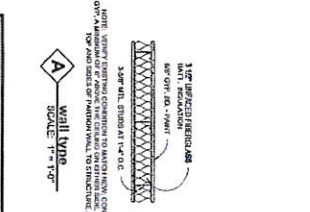
GENERAL NOTES:
 1. REFER TO SPECIFICATIONS FOR GENERAL USE ONLY. ALL QUANTITIES TO BE VERIFIED IN FIELD.

Room No.	Room Name	Floor Finish	Base	Walls	Van Finish	East	South	West	Ceiling Finish	Area	Comments
101	RECEPTION	CONCRETE	CONCRETE	CONCRETE	CONCRETE	CONCRETE	CONCRETE	CONCRETE	CONCRETE		
102	OFFICE	CONCRETE	CONCRETE	CONCRETE	CONCRETE	CONCRETE	CONCRETE	CONCRETE	CONCRETE		
103	OFFICE	CONCRETE	CONCRETE	CONCRETE	CONCRETE	CONCRETE	CONCRETE	CONCRETE	CONCRETE		
104	OFFICE	CONCRETE	CONCRETE	CONCRETE	CONCRETE	CONCRETE	CONCRETE	CONCRETE	CONCRETE		
105	OFFICE	CONCRETE	CONCRETE	CONCRETE	CONCRETE	CONCRETE	CONCRETE	CONCRETE	CONCRETE		
106	OFFICE	CONCRETE	CONCRETE	CONCRETE	CONCRETE	CONCRETE	CONCRETE	CONCRETE	CONCRETE		
107	OFFICE	CONCRETE	CONCRETE	CONCRETE	CONCRETE	CONCRETE	CONCRETE	CONCRETE	CONCRETE		
108	OFFICE	CONCRETE	CONCRETE	CONCRETE	CONCRETE	CONCRETE	CONCRETE	CONCRETE	CONCRETE		
109	OFFICE	CONCRETE	CONCRETE	CONCRETE	CONCRETE	CONCRETE	CONCRETE	CONCRETE	CONCRETE		
110	OFFICE	CONCRETE	CONCRETE	CONCRETE	CONCRETE	CONCRETE	CONCRETE	CONCRETE	CONCRETE		
111	OFFICE	CONCRETE	CONCRETE	CONCRETE	CONCRETE	CONCRETE	CONCRETE	CONCRETE	CONCRETE		
112	OFFICE	CONCRETE	CONCRETE	CONCRETE	CONCRETE	CONCRETE	CONCRETE	CONCRETE	CONCRETE		
113	OFFICE	CONCRETE	CONCRETE	CONCRETE	CONCRETE	CONCRETE	CONCRETE	CONCRETE	CONCRETE		
114	OFFICE	CONCRETE	CONCRETE	CONCRETE	CONCRETE	CONCRETE	CONCRETE	CONCRETE	CONCRETE		
115	OFFICE	CONCRETE	CONCRETE	CONCRETE	CONCRETE	CONCRETE	CONCRETE	CONCRETE	CONCRETE		
116	OFFICE	CONCRETE	CONCRETE	CONCRETE	CONCRETE	CONCRETE	CONCRETE	CONCRETE	CONCRETE		
117	OFFICE	CONCRETE	CONCRETE	CONCRETE	CONCRETE	CONCRETE	CONCRETE	CONCRETE	CONCRETE		
118	OFFICE	CONCRETE	CONCRETE	CONCRETE	CONCRETE	CONCRETE	CONCRETE	CONCRETE	CONCRETE		
119	OFFICE	CONCRETE	CONCRETE	CONCRETE	CONCRETE	CONCRETE	CONCRETE	CONCRETE	CONCRETE		
120	OFFICE	CONCRETE	CONCRETE	CONCRETE	CONCRETE	CONCRETE	CONCRETE	CONCRETE	CONCRETE		
121	OFFICE	CONCRETE	CONCRETE	CONCRETE	CONCRETE	CONCRETE	CONCRETE	CONCRETE	CONCRETE		
122	OFFICE	CONCRETE	CONCRETE	CONCRETE	CONCRETE	CONCRETE	CONCRETE	CONCRETE	CONCRETE		
123	OFFICE	CONCRETE	CONCRETE	CONCRETE	CONCRETE	CONCRETE	CONCRETE	CONCRETE	CONCRETE		
124	OFFICE	CONCRETE	CONCRETE	CONCRETE	CONCRETE	CONCRETE	CONCRETE	CONCRETE	CONCRETE		
125	OFFICE	CONCRETE	CONCRETE	CONCRETE	CONCRETE	CONCRETE	CONCRETE	CONCRETE	CONCRETE		
126	OFFICE	CONCRETE	CONCRETE	CONCRETE	CONCRETE	CONCRETE	CONCRETE	CONCRETE	CONCRETE		
127	OFFICE	CONCRETE	CONCRETE	CONCRETE	CONCRETE	CONCRETE	CONCRETE	CONCRETE	CONCRETE		
128	OFFICE	CONCRETE	CONCRETE	CONCRETE	CONCRETE	CONCRETE	CONCRETE	CONCRETE	CONCRETE		
129	OFFICE	CONCRETE	CONCRETE	CONCRETE	CONCRETE	CONCRETE	CONCRETE	CONCRETE	CONCRETE		
130	OFFICE	CONCRETE	CONCRETE	CONCRETE	CONCRETE	CONCRETE	CONCRETE	CONCRETE	CONCRETE		
131	OFFICE	CONCRETE	CONCRETE	CONCRETE	CONCRETE	CONCRETE	CONCRETE	CONCRETE	CONCRETE		
132	OFFICE	CONCRETE	CONCRETE	CONCRETE	CONCRETE	CONCRETE	CONCRETE	CONCRETE	CONCRETE		
133	OFFICE	CONCRETE	CONCRETE	CONCRETE	CONCRETE	CONCRETE	CONCRETE	CONCRETE	CONCRETE		
134	OFFICE	CONCRETE	CONCRETE	CONCRETE	CONCRETE	CONCRETE	CONCRETE	CONCRETE	CONCRETE		
135	OFFICE	CONCRETE	CONCRETE	CONCRETE	CONCRETE	CONCRETE	CONCRETE	CONCRETE	CONCRETE		
136	OFFICE	CONCRETE	CONCRETE	CONCRETE	CONCRETE	CONCRETE	CONCRETE	CONCRETE	CONCRETE		
137	OFFICE	CONCRETE	CONCRETE	CONCRETE	CONCRETE	CONCRETE	CONCRETE	CONCRETE	CONCRETE		
138	OFFICE	CONCRETE	CONCRETE	CONCRETE	CONCRETE	CONCRETE	CONCRETE	CONCRETE	CONCRETE		
139	OFFICE	CONCRETE	CONCRETE	CONCRETE	CONCRETE	CONCRETE	CONCRETE	CONCRETE	CONCRETE		
140	OFFICE	CONCRETE	CONCRETE	CONCRETE	CONCRETE	CONCRETE	CONCRETE	CONCRETE	CONCRETE		
141	OFFICE	CONCRETE	CONCRETE	CONCRETE	CONCRETE	CONCRETE	CONCRETE	CONCRETE	CONCRETE		
142	OFFICE	CONCRETE	CONCRETE	CONCRETE	CONCRETE	CONCRETE	CONCRETE	CONCRETE	CONCRETE		
143	OFFICE	CONCRETE	CONCRETE	CONCRETE	CONCRETE	CONCRETE	CONCRETE	CONCRETE	CONCRETE		
144	OFFICE	CONCRETE	CONCRETE	CONCRETE	CONCRETE	CONCRETE	CONCRETE	CONCRETE	CONCRETE		
145	OFFICE	CONCRETE	CONCRETE	CONCRETE	CONCRETE	CONCRETE	CONCRETE	CONCRETE	CONCRETE		
146	OFFICE	CONCRETE	CONCRETE	CONCRETE	CONCRETE	CONCRETE	CONCRETE	CONCRETE	CONCRETE		
147	OFFICE	CONCRETE	CONCRETE	CONCRETE	CONCRETE	CONCRETE	CONCRETE	CONCRETE	CONCRETE		
148	OFFICE	CONCRETE	CONCRETE	CONCRETE	CONCRETE	CONCRETE	CONCRETE	CONCRETE	CONCRETE		
149	OFFICE	CONCRETE	CONCRETE	CONCRETE	CONCRETE	CONCRETE	CONCRETE	CONCRETE	CONCRETE		
150	OFFICE	CONCRETE	CONCRETE	CONCRETE	CONCRETE	CONCRETE	CONCRETE	CONCRETE	CONCRETE		
151	OFFICE	CONCRETE	CONCRETE	CONCRETE	CONCRETE	CONCRETE	CONCRETE	CONCRETE	CONCRETE		
152	OFFICE	CONCRETE	CONCRETE	CONCRETE	CONCRETE	CONCRETE	CONCRETE	CONCRETE	CONCRETE		
153	OFFICE	CONCRETE	CONCRETE	CONCRETE	CONCRETE	CONCRETE	CONCRETE	CONCRETE	CONCRETE		
154	OFFICE	CONCRETE	CONCRETE	CONCRETE	CONCRETE	CONCRETE	CONCRETE	CONCRETE	CONCRETE		
155	OFFICE	CONCRETE	CONCRETE	CONCRETE	CONCRETE	CONCRETE	CONCRETE	CONCRETE	CONCRETE		
156	OFFICE	CONCRETE	CONCRETE	CONCRETE	CONCRETE	CONCRETE	CONCRETE	CONCRETE	CONCRETE		
157	OFFICE	CONCRETE	CONCRETE	CONCRETE	CONCRETE	CONCRETE	CONCRETE	CONCRETE	CONCRETE		
158	OFFICE	CONCRETE	CONCRETE	CONCRETE	CONCRETE	CONCRETE	CONCRETE	CONCRETE	CONCRETE		
159	OFFICE	CONCRETE	CONCRETE	CONCRETE	CONCRETE	CONCRETE	CONCRETE	CONCRETE	CONCRETE		
160	OFFICE	CONCRETE	CONCRETE	CONCRETE	CONCRETE	CONCRETE	CONCRETE	CONCRETE	CONCRETE		

FINISH SCHEDULE

1. Finish new door or casework has been provided or field in place the length of the door.
2. Paint LVT flooring to color of customer at the time of installation.
3. Paint base and cap of window casework to color of customer at the time of installation.
4. Provide ceiling tile installation in accordance with manufacturer's instructions.
5. Carpet (except loop) equal to full function.
6. Carpet (loop) equal to full function.
7. Carpet (loop) very low pile to full function.
8. Carpet (loop) very low pile to full function.
9. Carpet (loop) very low pile to full function.
10. Carpet (loop) very low pile to full function.
11. Carpet (loop) very low pile to full function.
12. Carpet (loop) very low pile to full function.
13. Carpet (loop) very low pile to full function.
14. Carpet (loop) very low pile to full function.
15. Carpet (loop) very low pile to full function.
16. Carpet (loop) very low pile to full function.
17. Carpet (loop) very low pile to full function.
18. Carpet (loop) very low pile to full function.
19. Carpet (loop) very low pile to full function.
20. Carpet (loop) very low pile to full function.

1. STRUCTURAL ELEMENTS OF THIS BUILDING ARE TO BE MAINTAINED AND NOT TO BE ALTERED IN ANY MANNER AS PART OF THIS PROJECT. ANY ALTERATIONS TO THE STRUCTURE OF THE BUILDING SHALL BE APPROVED BY THE ARCHITECT AND THE CITY ENGINEER. ANY ALTERATIONS TO THE STRUCTURE OF THE BUILDING SHALL BE APPROVED BY THE ARCHITECT AND THE CITY ENGINEER. ANY ALTERATIONS TO THE STRUCTURE OF THE BUILDING SHALL BE APPROVED BY THE ARCHITECT AND THE CITY ENGINEER.
2. ALL WORK SHALL BE DONE IN ACCORDANCE WITH THE CITY SPECIFICATIONS AND THE ARCHITECT'S SCHEDULE OF FINISHES. ALL WORK SHALL BE DONE IN ACCORDANCE WITH THE CITY SPECIFICATIONS AND THE ARCHITECT'S SCHEDULE OF FINISHES. ALL WORK SHALL BE DONE IN ACCORDANCE WITH THE CITY SPECIFICATIONS AND THE ARCHITECT'S SCHEDULE OF FINISHES.
3. ALL WORK SHALL BE DONE IN ACCORDANCE WITH THE CITY SPECIFICATIONS AND THE ARCHITECT'S SCHEDULE OF FINISHES. ALL WORK SHALL BE DONE IN ACCORDANCE WITH THE CITY SPECIFICATIONS AND THE ARCHITECT'S SCHEDULE OF FINISHES. ALL WORK SHALL BE DONE IN ACCORDANCE WITH THE CITY SPECIFICATIONS AND THE ARCHITECT'S SCHEDULE OF FINISHES.
4. ALL WORK SHALL BE DONE IN ACCORDANCE WITH THE CITY SPECIFICATIONS AND THE ARCHITECT'S SCHEDULE OF FINISHES. ALL WORK SHALL BE DONE IN ACCORDANCE WITH THE CITY SPECIFICATIONS AND THE ARCHITECT'S SCHEDULE OF FINISHES. ALL WORK SHALL BE DONE IN ACCORDANCE WITH THE CITY SPECIFICATIONS AND THE ARCHITECT'S SCHEDULE OF FINISHES.



26. ARV. 2014
 Commission Number
A101
 Date: November 24, 2014

Rev. No.	Rev. Description	Rev. Date	Rev. By
1			
2			
3			
4			
5			

BRACKETT KRENNERICH architects

Renovations to Justice Complex
 City of Jonesboro
 Jonesboro, Arkansas