

**LEGAL DESCRIPTION:**

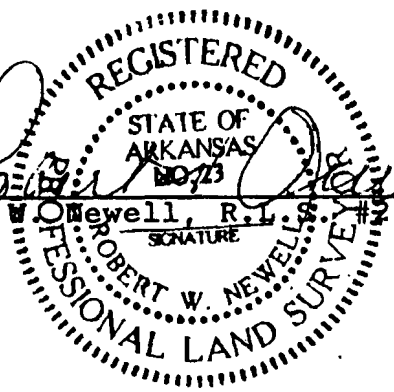
A part of Block 13 of Ridgecrest Addition, Jonesboro, Arkansas as recorded in Book 48, Page 243 in the office of the Circuit Court Clerk and Ex-Officio Recorder, Craighead County, Jonesboro, Arkansas, more particularly described as follows: Begin at the Northeast corner of Block 13, Ridgecrest Addition; then run South 79.0 feet; then run South 70°02' West 186.1 feet; then run North 144.9 feet; then run South 89°14'30" East 175.0 feet to the point of beginning, containing 0.45 acres.

**SURVEYOR'S CERTIFICATION:**

I hereby certify that the plat shown and described hereon is the result of a survey made in May, 1989, that it is a true and accurate survey and the monuments were found or set as noted. Owner to verify applicable codes relative to building set-backs and possible utility easements, etc.

By Robert W. Newell  
 Robert W. Newell, R.L.S. #23

5/15/89  
 Date



<b>J M N</b>	<b>JONESBORO</b> <b>MILLER</b> <b>NEWELL</b>	● Engineers ● Surveyors JONESBORO, ARKANSAS
	PROPERTY LINE SURVEY OF PART BLOCK 13, RIDGECREST ADDITION FOR MR. FRANK MACON JONESBORO, ARKANSAS	
JOB NO. 83-1		DATE 5-15-89

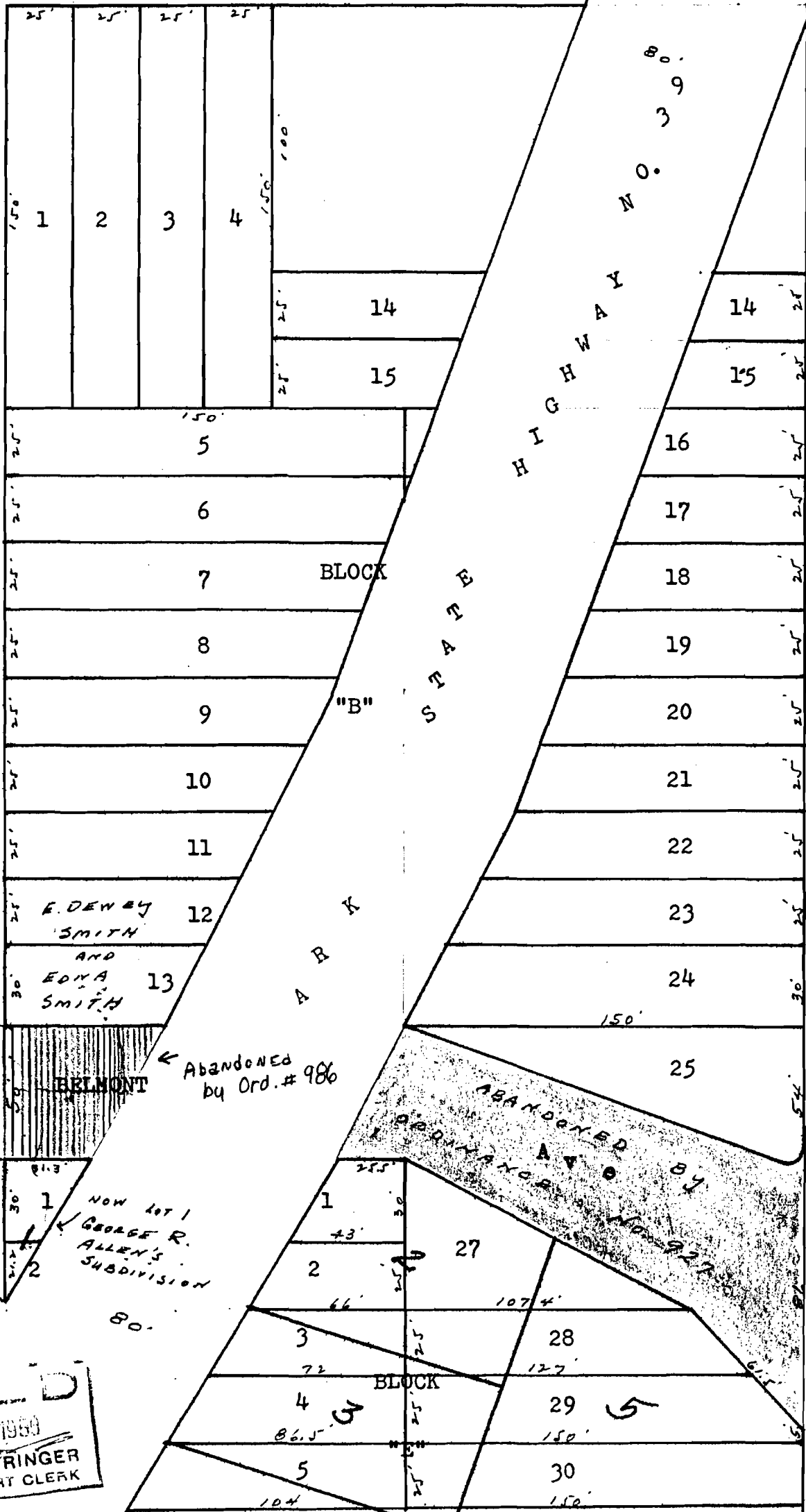
HIGHLAND DRIVE

MADISON

SPRING

MAIN

SPRING



FILED  
APR 20 1960  
PHYLLIS STRINGER  
CITY & COURT CLERK

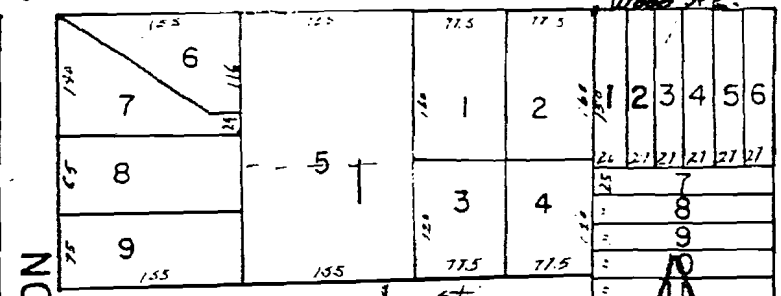
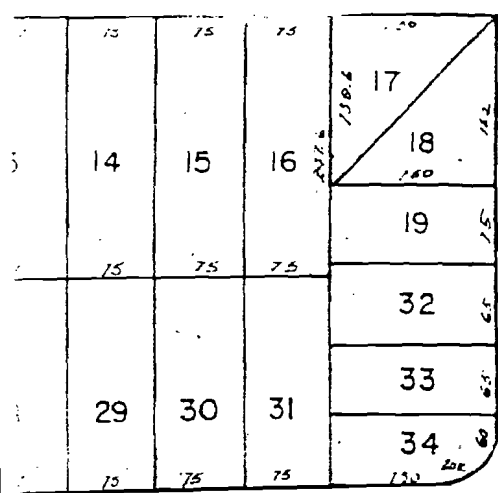
PLAT OF BLOCK "B" AND PART OF BLOCK "E" OF BELMONT ADDITION TO CITY OF JONESBORO, ARKANSAS SHOWING HIGHWAY NO. 39, THAT PART OF BLOCK "E" BEING NOW PART OF GEORGE R. ALLEN'S SUBDIVISION.

B.P. 9  
149.8

220

625

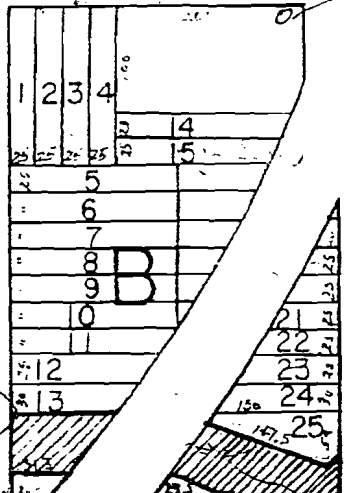
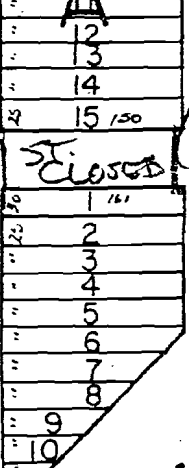
# HIGHLAND



## BELMONT

ST. CLOSED

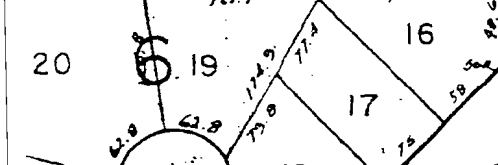
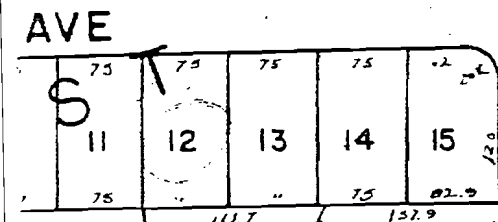
Abandoned by Ord. #2180 (last 175 ft)



## MADISON

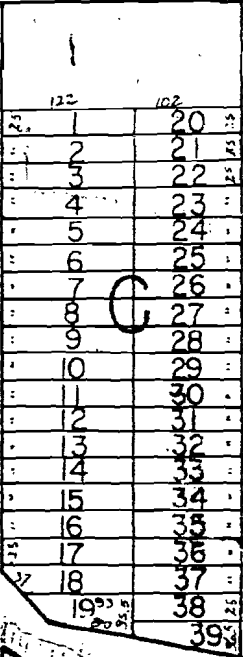
## HAMPTON

## CONCORD



## AVE S

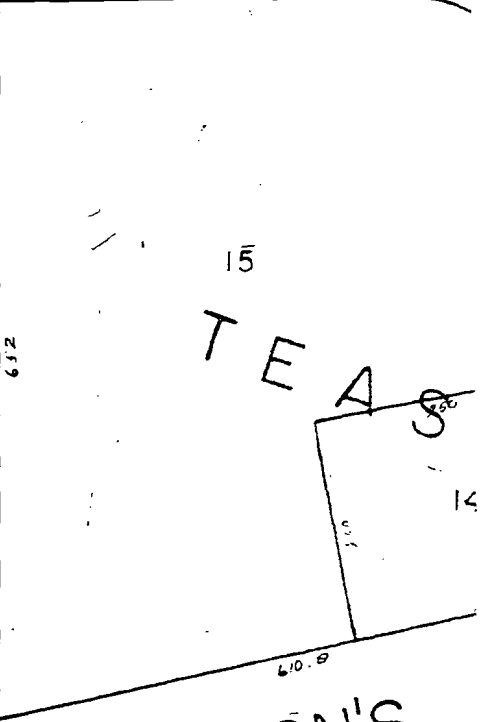
F.R.



## C

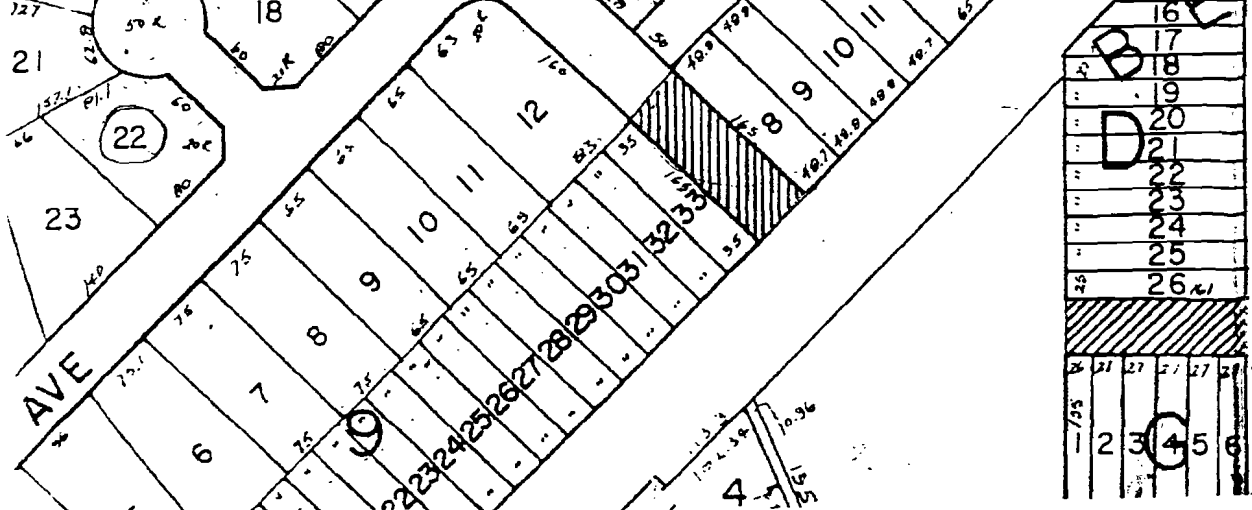
## F

## ROSE



## TEA

## CRAFTON'S



## AVE

## MAIN

## GEORGE

## PALMER

## WATER

## ST.

## ROAD