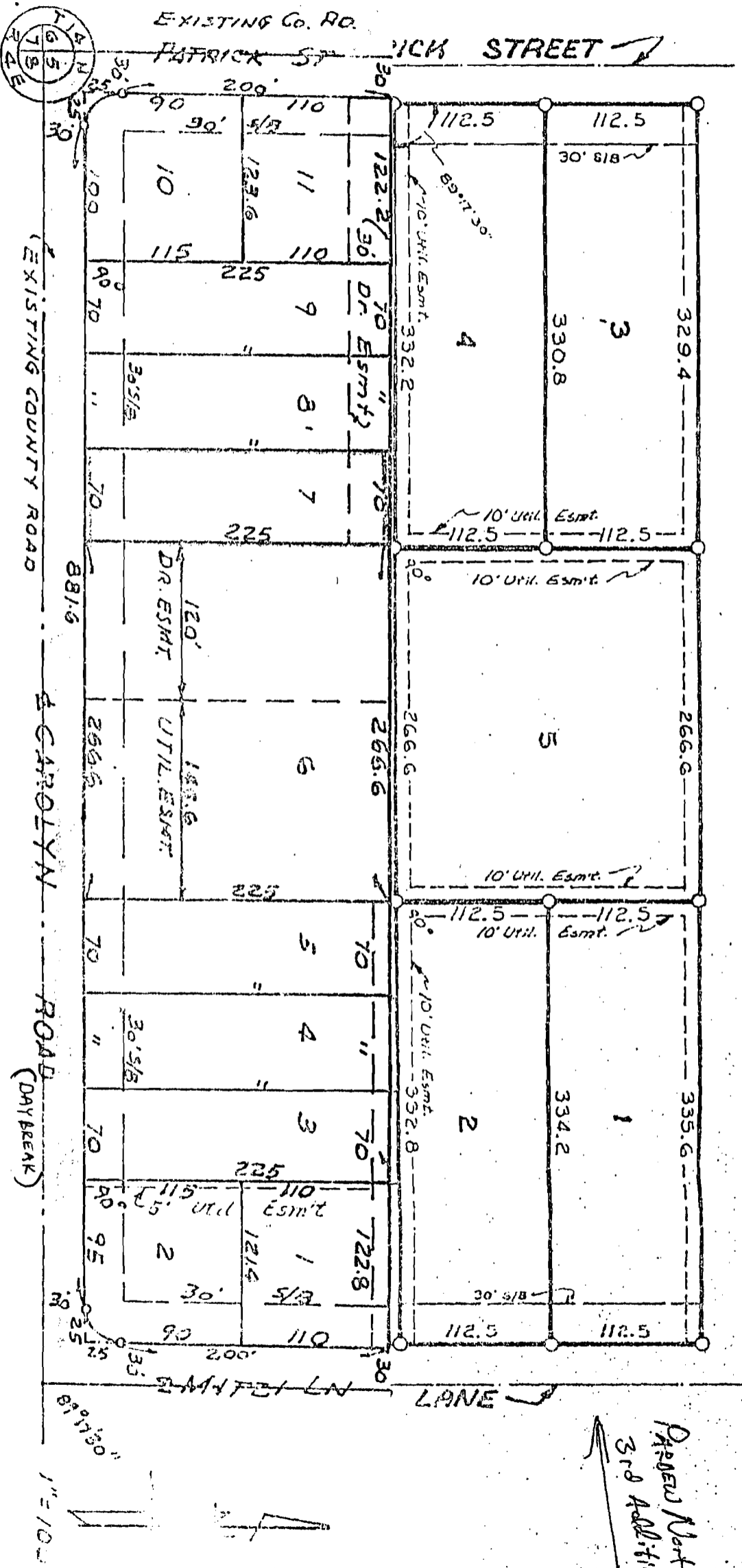


PARDENS NORTH SUBDIVISION
3rd Addition



PARDENS NORTH SUBDIVISION

Being a Re-Plat of Lot 1 of Decus Acres as recorded in Book 155, Page 76, Craighead County, Arkansas.

Notes:
Iron pipe set at all lot corners

SEVERAL'S CERTIFICATION

We hereby certify that we are the owners of the property shown and described herein. That we adopt the plan of subdivision and dedicate permanent use of all streets and easements as noted.

SEVERAL'S CERTIFICATION

I hereby certify that the plat shown and described herein is the result of a survey made in September, 1970; that it is a true and accurate survey and the monuments were found or set as noted.

APPROVED

Associated Engineers, Inc.
For: [Signature]
Ark. Reg. No. []

October 1, 1970

ed for
O.P.M.
R 179,