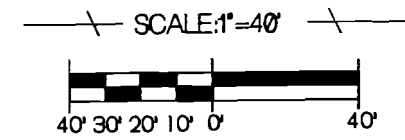
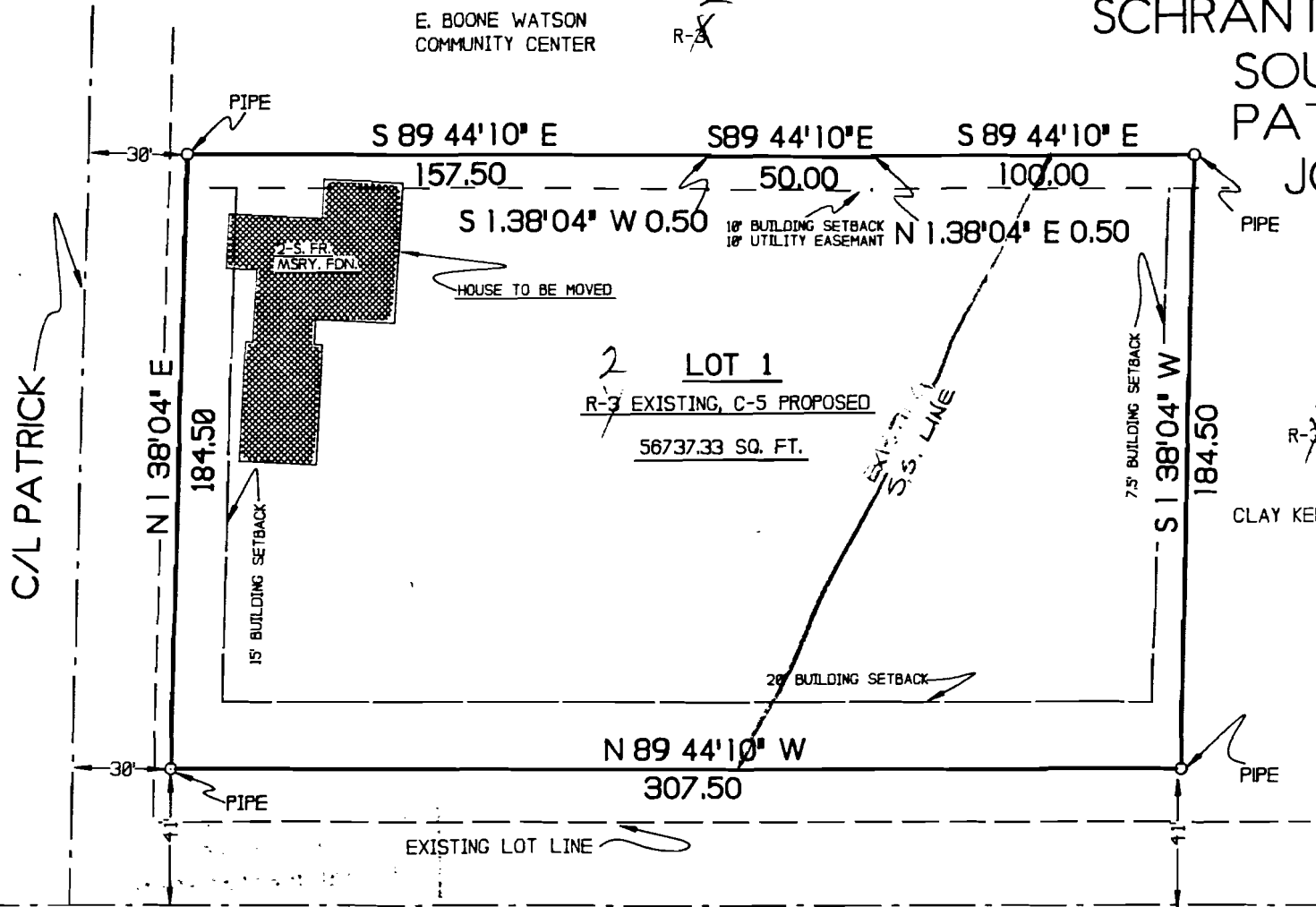


E. BOONE WATSON
COMMUNITY CENTER

2
R-3

SCHRANTZ'S REPLAT OF PART OF THE SOUTH HALF OF BLOCK 25 PATRICK'S THIRD ADDITION JONESBORO, ARKANSAS



WE HEREBY CERTIFY THAT WE ARE THE OWNERS OF THE PROPERTY SHOWN AND DESCRIBED HEREON. THAT WE ADOPT THE PLAN OF SUBDIVISION AND DEDICATE PERPETUAL USE OF STREETS AND EASEMENTS AS NOTED.

Wendy Phillips



R290-45 + R890-50

		TROY L. SHEETS SURVEYING 206 W. WARNER * P.O. BOX 1872 JONESBORO, ARKANSAS 72403 501/935-2838	
CLIENT	DR. JIM SCHRANTZ	DRAWN BY	CWD
DATE	11-15-90	SCALE	1"=40'
		JOB NO.	90191

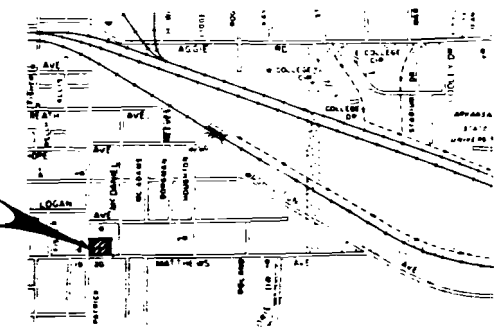
C/L PATRICK

C/L EAST MATTHEWS

CWL will work with developer to relocate SS when site plan is developed to avoid structures.

THIS PLAT

CWL



VICINITY MAP SCALE 1"=2000'