

1 FIRST FLOOR PLAN  
1/8" = 1'-0"

REV	DATE	DESCRIPTION

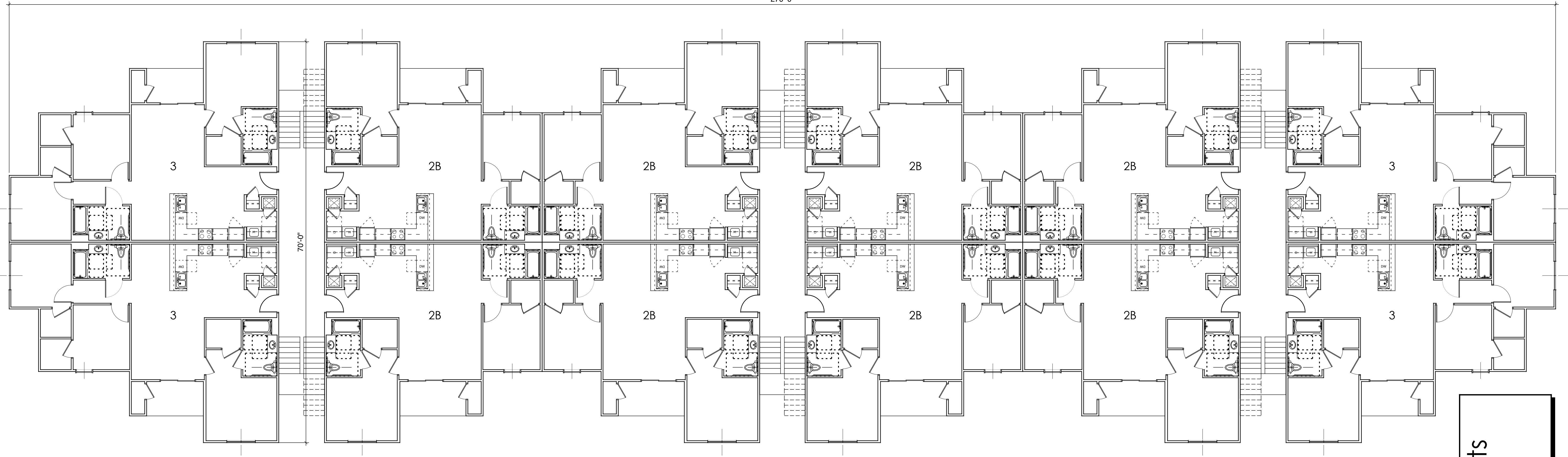
Willow Creek Apartments  
Caraway Road  
Jonesboro, Arkansas

**H+W**  
Heiple+Wiedower  
Architects Planners  
319 Pres. Clinton Avenue  
Little Rock, AR 72201  
(t) 501-707-0115  
(f) 501-707-0118

Project No:  
**HW9-368**  
Date:  
**6-23-09**  
Sheet Title:  
**BUILDING  
"One"  
PLANS**

of \_\_\_\_\_  
Sheet No:  
**A1.1**

**BUILDING "ONE" : 36 - 2BR 2BA (950 sf)**



Willow Creek Apartments  
 Caraway Road  
 Jonesboro, Arkansas

Project No:  
 HW9-368

Date:  
 6-23-09

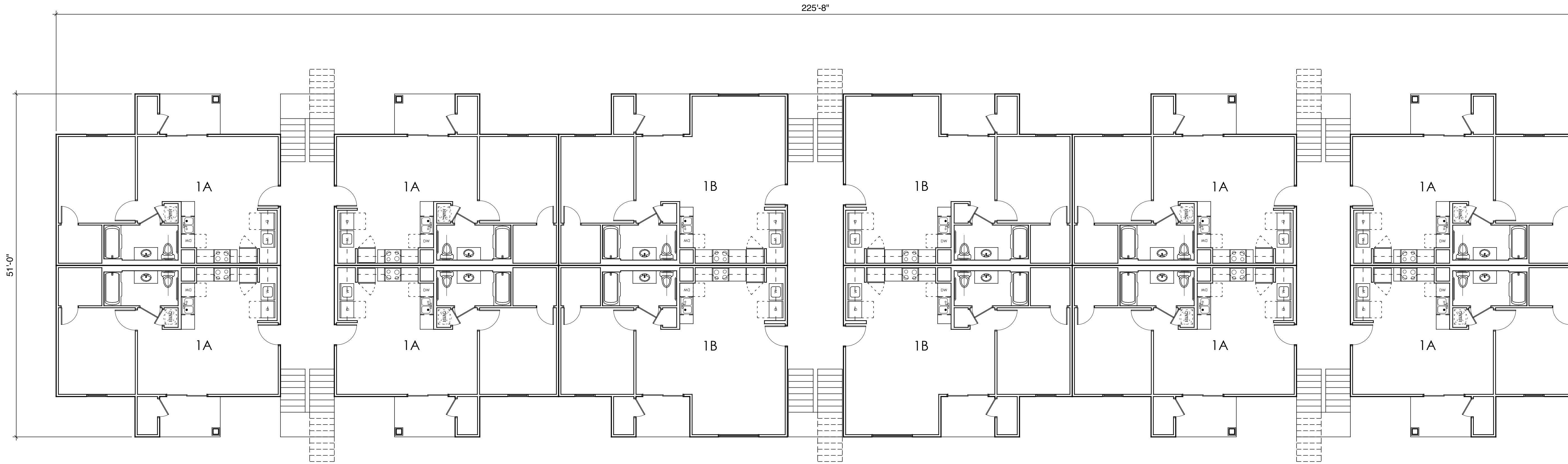
Sheet Title:  
 BUILDING  
 "Two"  
 PLANS

of \_\_\_\_\_  
 Sheet No:

A1.2

**H+W**  
 Heiple+Wiedower  
 Architects Planners  
 319 Pres. Clinton Avenue  
 Little Rock, AR 72201  
 (t) 501-707-0115  
 (f) 501-707-0118

**BUILDING "TWO" : 24 - 2BR/2BA (1050 sf) and 12 - 3BR/2BA**



1 FIRST FLOOR PLAN  
1/8" = 1'-0"

REV	DATE	DESCRIPTION

Willow Creek Apartments  
Caraway Road  
Jonesboro, Arkansas

**H+W**  
Heiple+Wiedower  
Architects Planners  
319 Pres. Clinton Avenue  
Little Rock, AR 72201  
(t) 501-707-0115  
(f) 501-707-0118

Project No:  
HW9-368

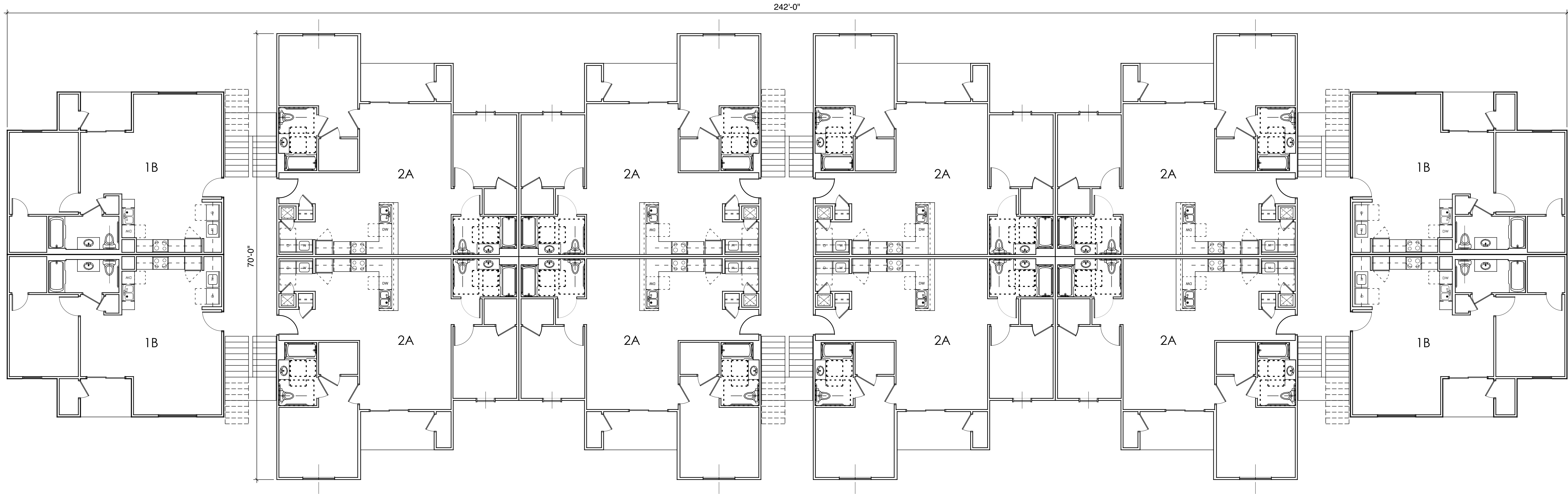
Date:  
6-23-09

Sheet Title:  
BUILDING  
"Three"  
PLANS

of \_\_\_\_\_  
Sheet No:

**A1.3**

**BUILDING "THREE" : 24 - 1BR/1BA(650 sf) and 12 - 1BR/1BA(750 SF)**



1 FIRST FLOOR PLAN  
1/8" = 1'-0"

REV	DATE	DESCRIPTION

Willow Creek Apartments  
Caraway Road  
Jonesboro, Arkansas

**H+W**  
Heiple+Wiedower  
Architects Planners  
319 Pres. Clinton Avenue  
Little Rock, AR 72201  
(t) 501-707-0115  
(f) 501-707-0118

Project No:  
**HW9-368**

Date:  
**6-23-09**

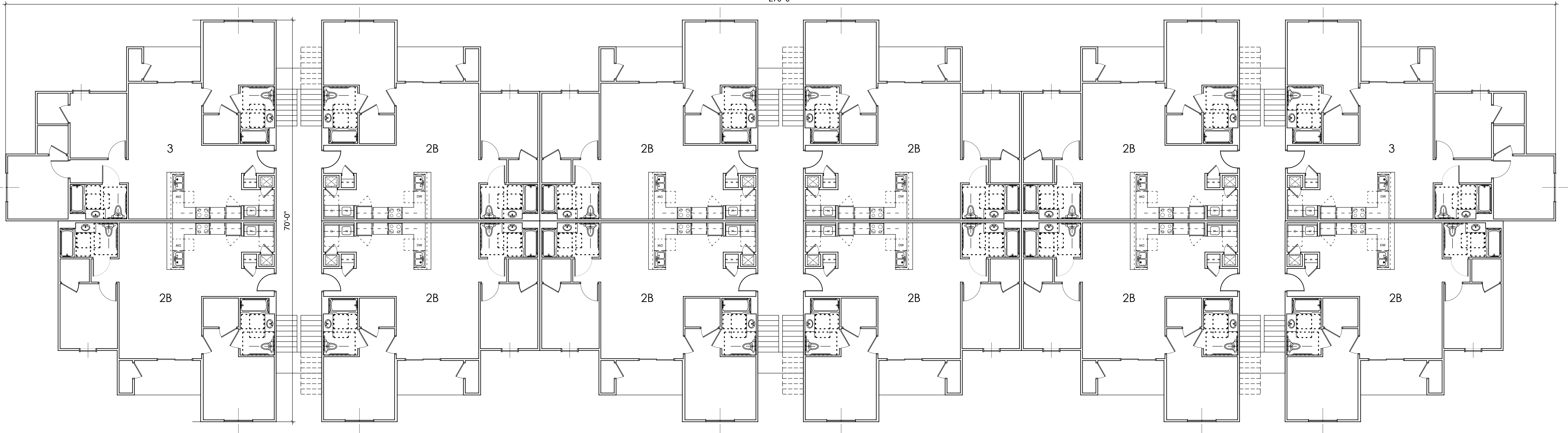
Sheet Title:  
**BUILDING  
"Four"  
PLANS**

of \_\_\_\_\_  
Sheet No:

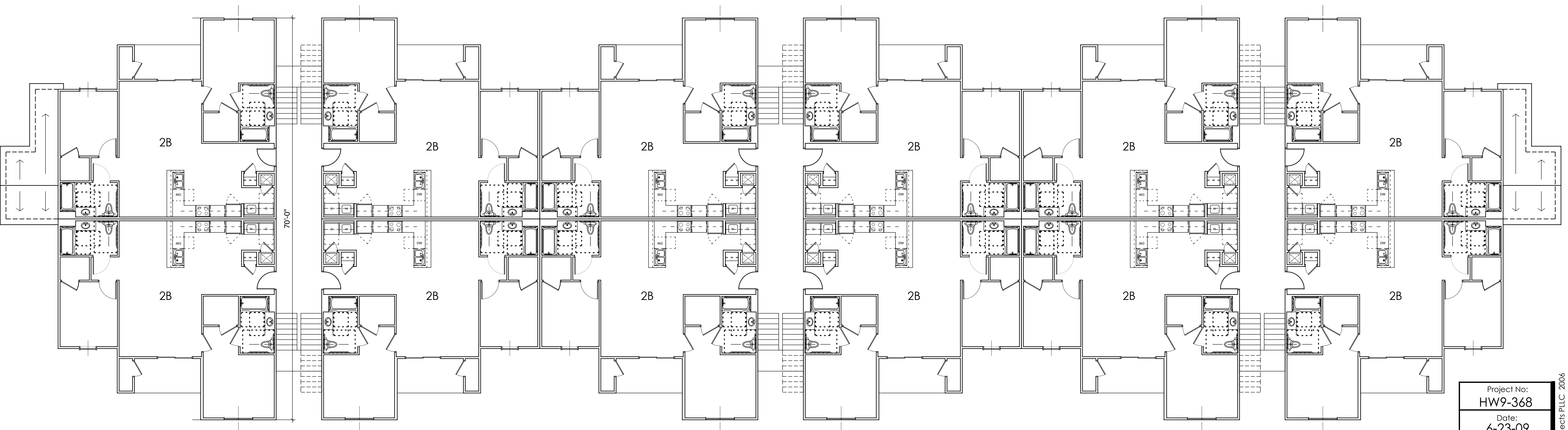
**A1.4**

**BUILDING "FOUR" : 26 - 2BR/2BA(950 sf) and 2 - 2BR/2BA(1050 sf) and 8 1BR/1BA(750 SF)**

270'-0"



1 FIRST FLOOR PLAN  
1/8" = 1'-0"



2 SECOND & THIRD FLOOR PLANS  
1/8" = 1'-0"

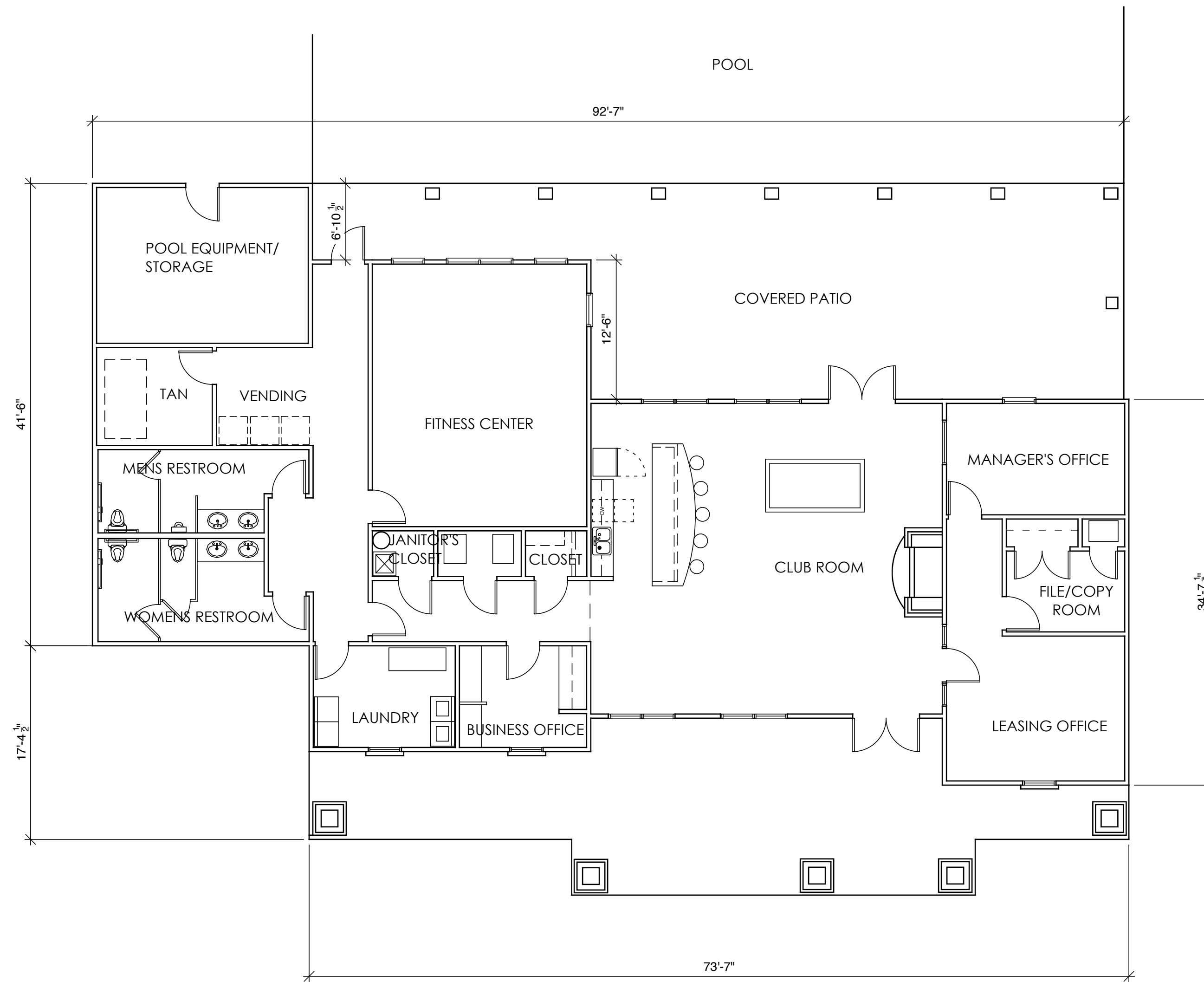
**BUILDING "FIVE" : 34 - 2BR/2BA (1050 sf) and 2 - 3BR/2BA**

**Willow Creek Apartments**  
Caraway Road  
Jonesboro, Arkansas

**H+W**  
Heiple+Wiedower  
Architects Planners  
319 Pres. Clinton Avenue  
Little Rock, AR 72201  
(T) 501-707-0115  
(F) 501-707-0118

Project No:  
**HW9-368**  
Date:  
**6-23-09**  
Sheet Title:  
**BUILDING  
"Five"  
PLANS**  
**A1.5**

© Drawing Property of H+W Architects PLLC 2006



**FLOOR PLAN**  
1/8" = 1'-0"



**FRONT ELEVATION**  
1/8" = 1'-0"

DESCRIPTION

REV | DATE

**Willow Creek Apartments**  
Caraway Road  
Jonesboro, Arkansas

**H+W**

Heiple+Wiedower  
Architects Planners

319 Pres. Clinton Avenue  
Little Rock, AR 72201  
(t) 501-707-0115  
(f) 501-707-0118

Project No:  
**HW9-368**

Date:  
**6-26-09**

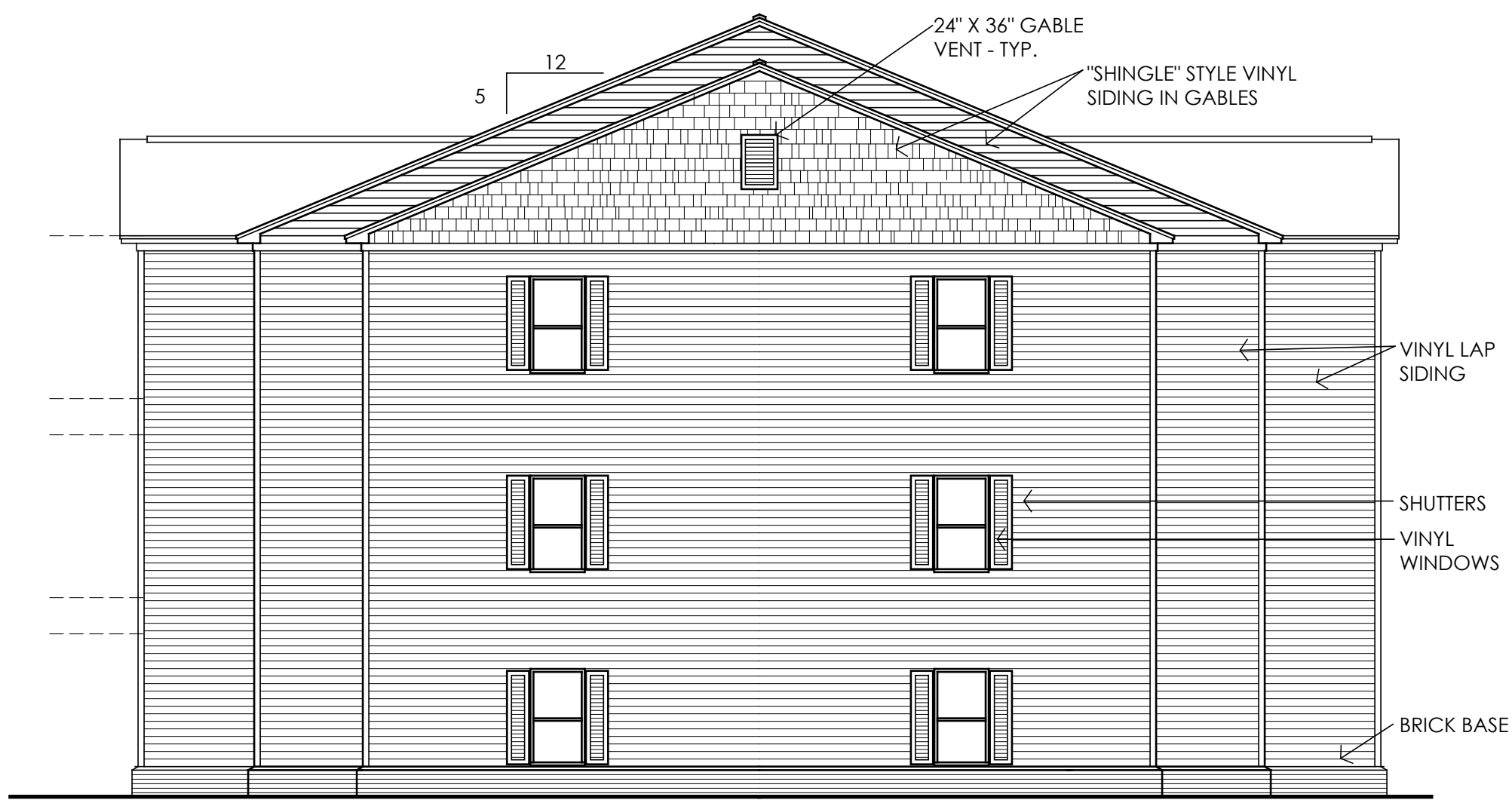
Sheet Title:  
**OFFICE/  
CLUBHOUSE**

Sheet No:

**A1.6**



1 FRONT ELEVATIONS  
1/8" = 1'-0"



2 END ELEVATIONS  
1/8" = 1'-0"

REV.	DATE	DESCRIPTION

Willow Creek Apartments  
Caraway Road  
Jonesboro, Arkansas

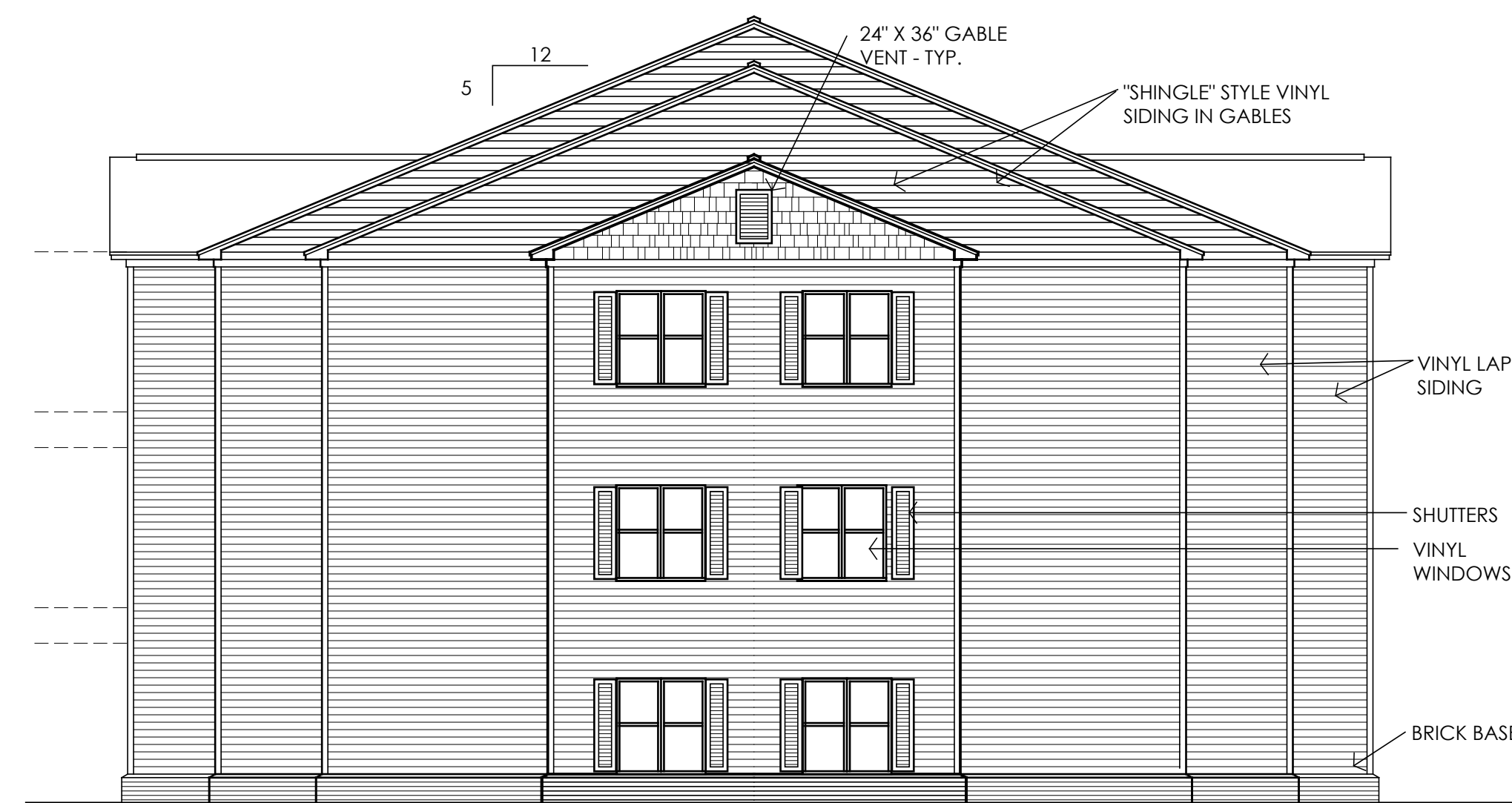
**H+W**  
Heiple+Wiedower  
Architects Planners  
319 Pres. Clinton Avenue  
Little Rock, AR 72201  
(t) 501-707-0115  
(f) 501-707-0118

Project No:  
**HW9-368**  
Date:  
**6-26-09**  
Sheet Title:  
**BUILDING  
"One"  
ELEVATIONS**

of  
Sheet No:  
**A2.1**



1 FRONT ELEVATIONS  
1/8" = 1'-0"



2 END ELEVATIONS  
1/8" = 1'-0"

Willow Creek Apartments  
Caraway Road  
Jonesboro, Arkansas

Project No:  
HW9-368

Date:  
06-26-09

Sheet Title:  
BUILDING  
"Two"  
ELEVATIONS

of  
Sheet No:

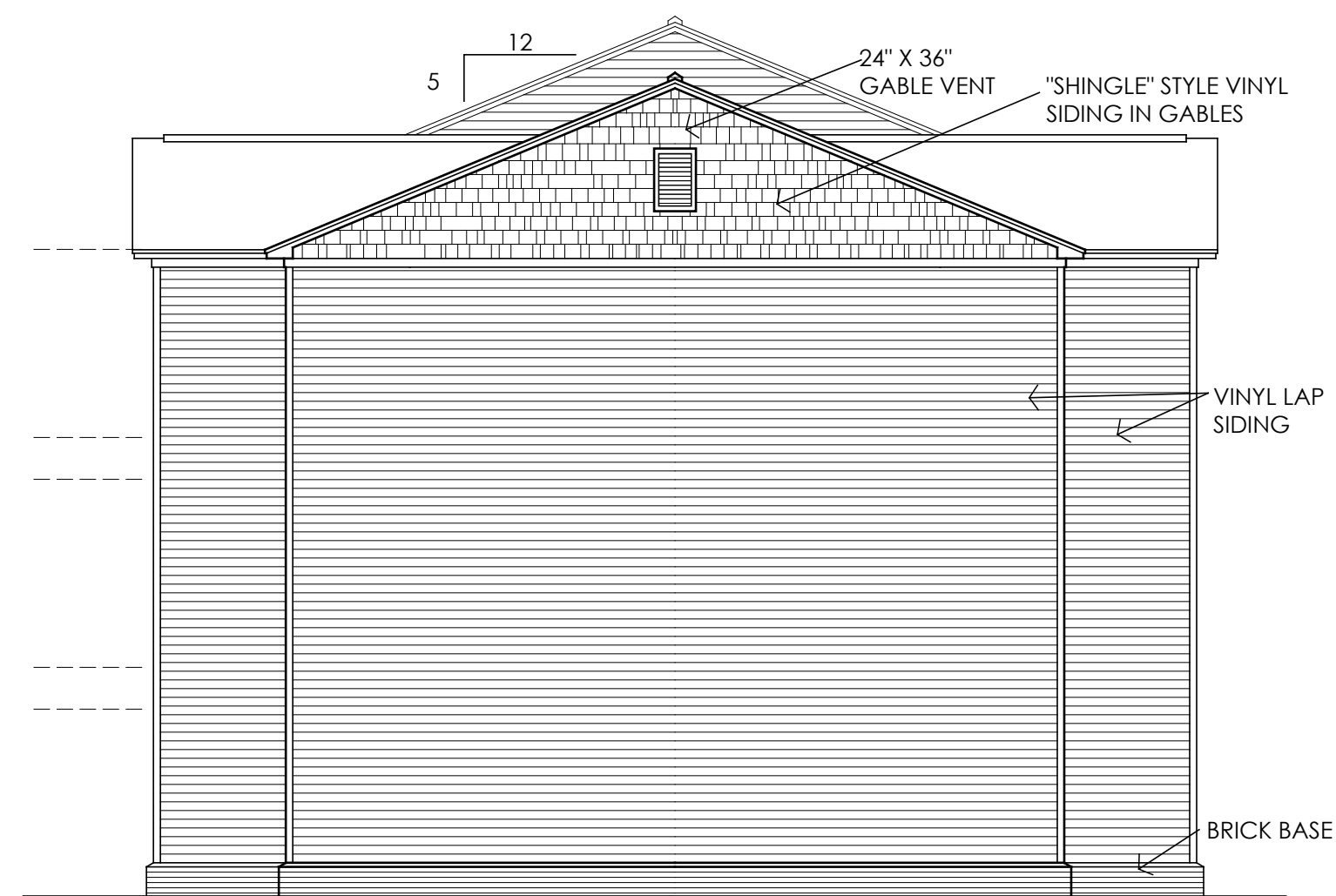
A2.2

**H+W**  
Heiple+Wiedower  
Architects Planners  
319 Pres. Clinton Avenue  
Little Rock, AR 72201  
(t) 501-707-0115  
(f) 501-707-0118





1 FRONT ELEVATIONS  
1/8" = 1'-0"



2 END ELEVATIONS  
1/8" = 1'-0"

REV.	DATE	DESCRIPTION

Willow Creek Apartments  
Caraway Road  
Jonesboro, Arkansas

**H+W**  
Heiple+Wiedower  
Architects Planners  
319 Pres. Clinton Avenue  
Little Rock, AR 72201  
(t) 501-707-0115  
(f) 501-707-0118

Project No:  
**HW9-368**

Date:  
**6-26-09**

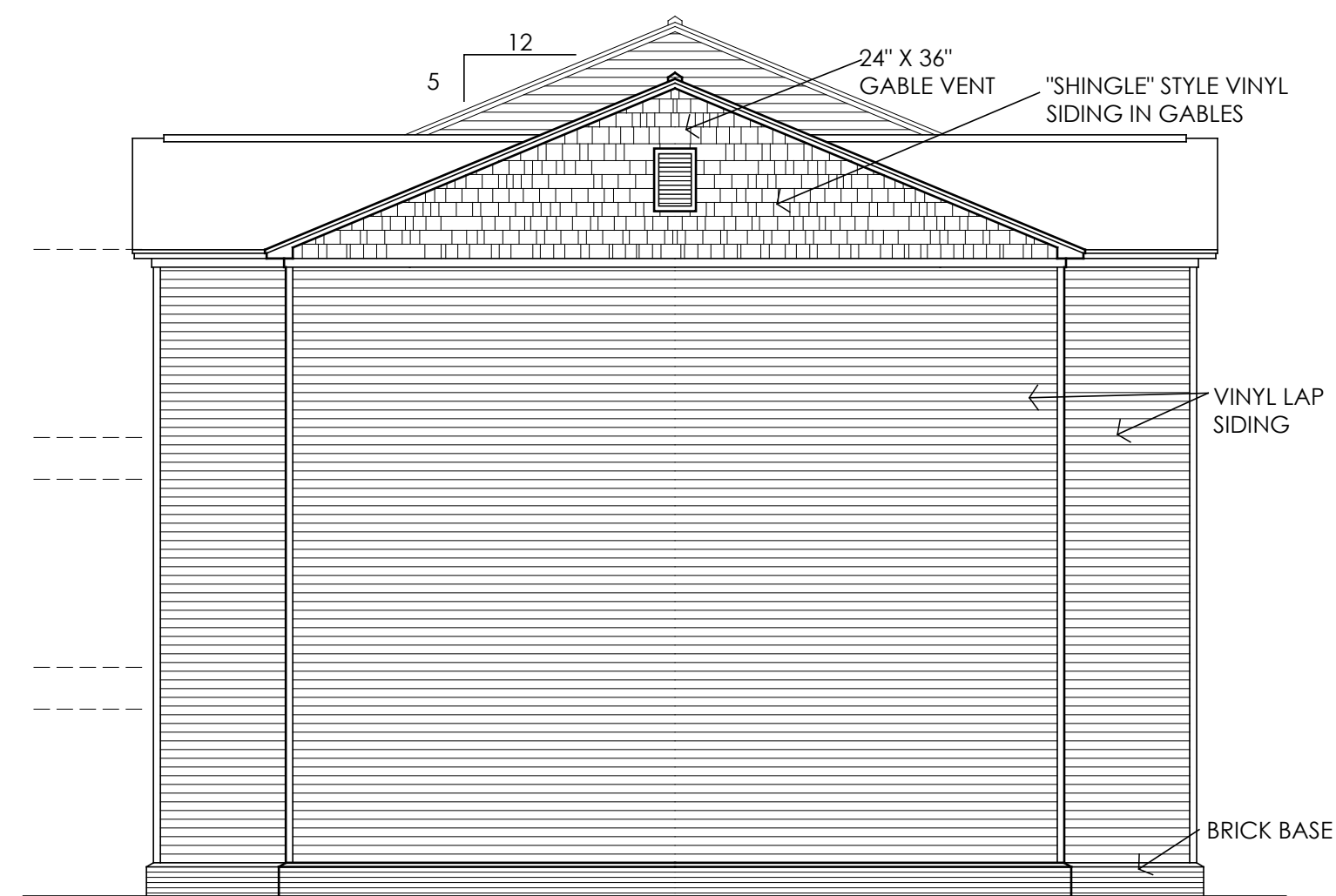
Sheet Title:  
**BUILDING  
"One"  
ELEVATIONS**

of  
Sheet No:

**A2.1**



1 FRONT ELEVATIONS  
1/8" = 1'-0"



2 END ELEVATIONS  
1/8" = 1'-0"

REV.	DATE	DESCRIPTION

Willow Creek Apartments  
Caraway Road  
Jonesboro, Arkansas

**H+W**  
Heiple+Wiedower  
Architects Planners  
319 Pres. Clinton Avenue  
Little Rock, AR 72201  
(t) 501-707-0115  
(f) 501-707-0118

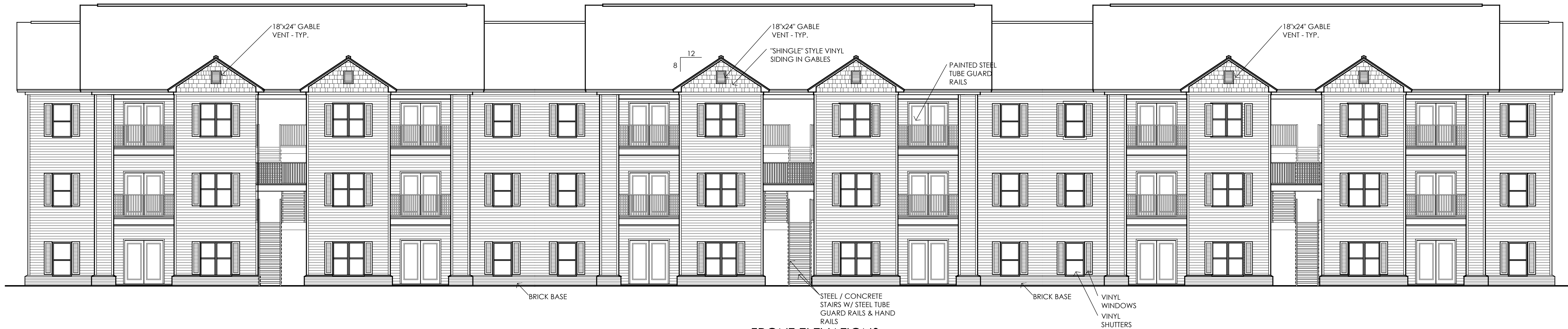
Project No:  
**HW9-368**

Date:  
**6-26-09**

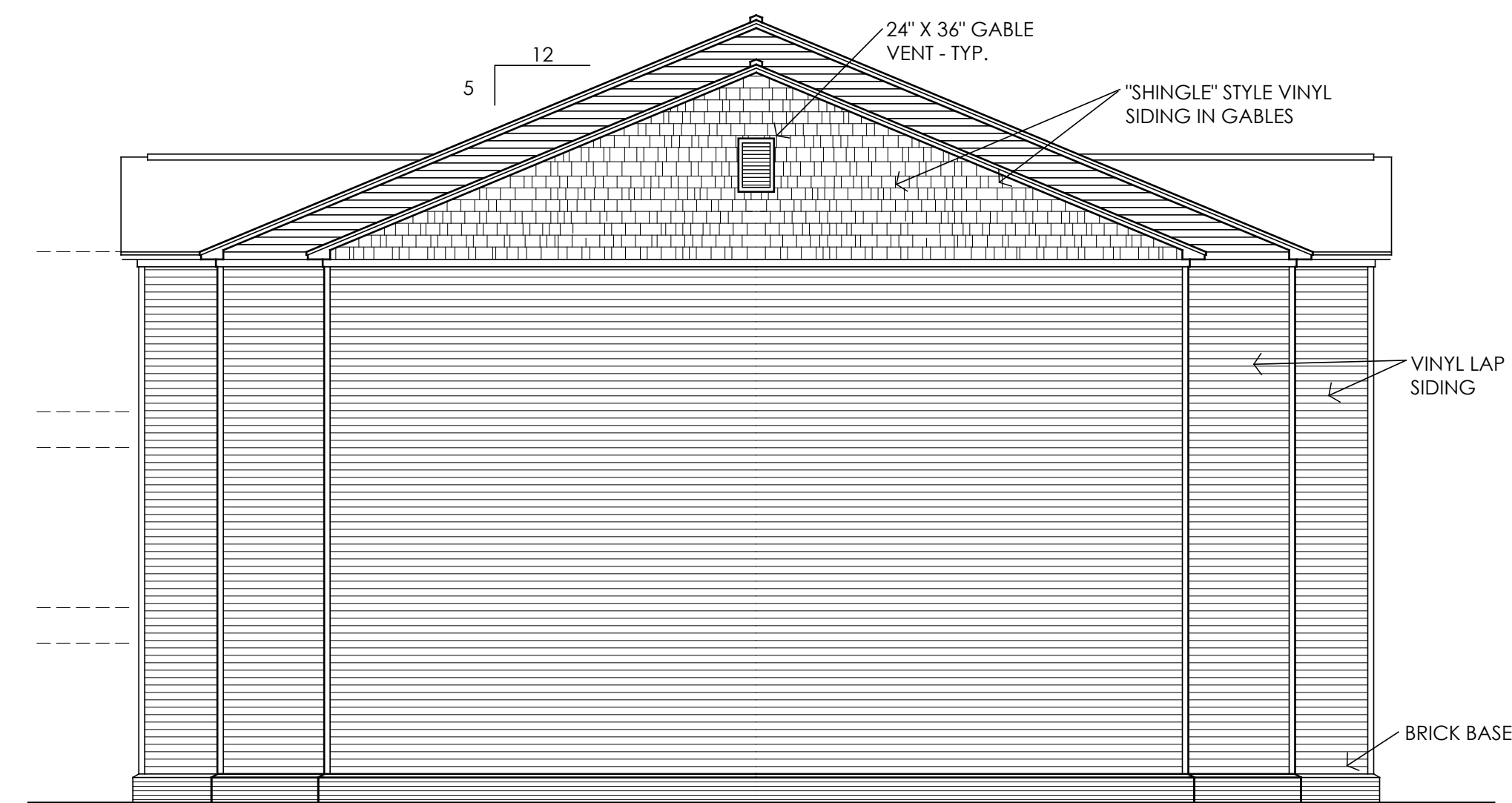
Sheet Title:  
**BUILDING  
"Three"  
ELEVATIONS**

of  
Sheet No:

**A2.3**



1 FRONT ELEVATIONS  
1/8" = 1'-0"



2 END ELEVATIONS  
1/8" = 1'-0"

REV	DATE	DESCRIPTION

Willow Creek Apartments  
Caraway Road  
Jonesboro, Arkansas

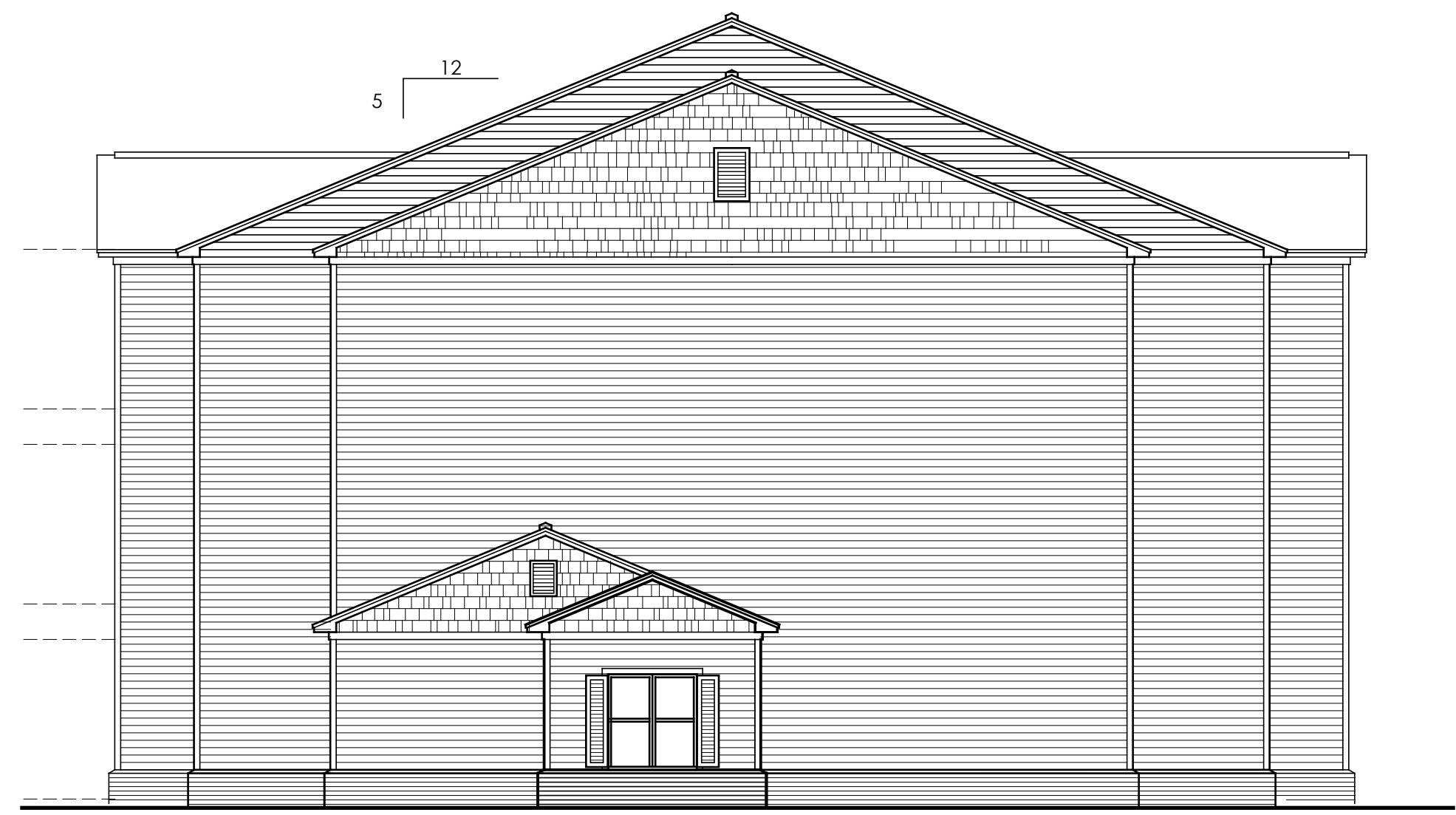
**H+W**  
Heiple+Wiedower  
Architects Planners  
319 Pres. Clinton Avenue  
Little Rock, AR 72201  
(t) 501-707-0115  
(f) 501-707-0118

Project No:  
**HW9-368**  
Date:  
**6-26-09**  
Sheet Title:  
**BUILDING  
"Four"  
ELEVATIONS**

of  
Sheet No:  
**A2.4**



1 FRONT ELEVATIONS  
1/8" = 1'-0"



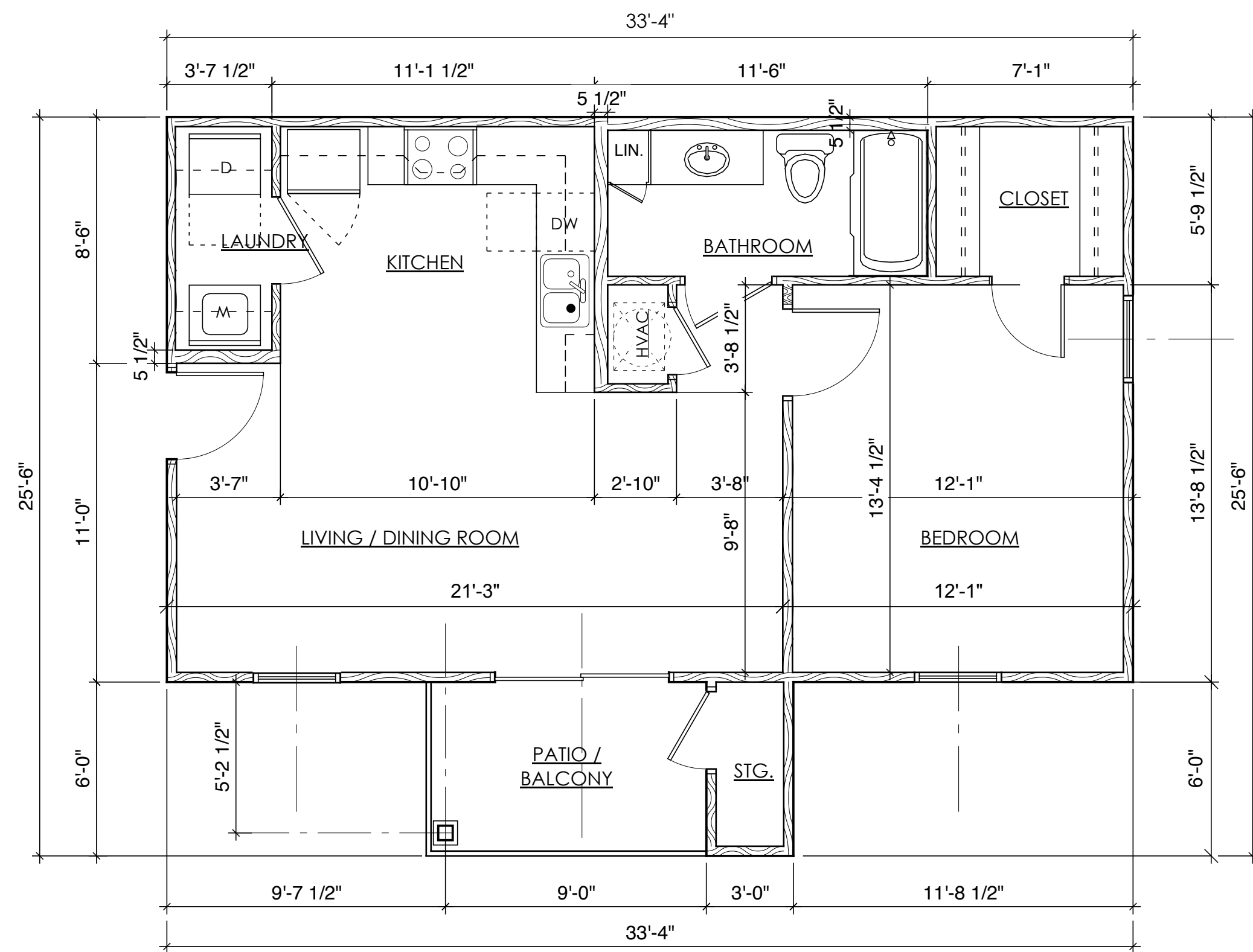
2 END ELEVATIONS  
1/8" = 1'-0"

**H+W**  
Heiple+Wiedower  
Architects Planners  
319 Pres. Clinton Avenue  
Little Rock, AR 72201  
(t) 501-707-0115  
(f) 501-707-0118

Project No:  
HW9-368  
Date:  
6-26-09  
Sheet Title:  
BUILDING  
"Five"  
ELEVATIONS

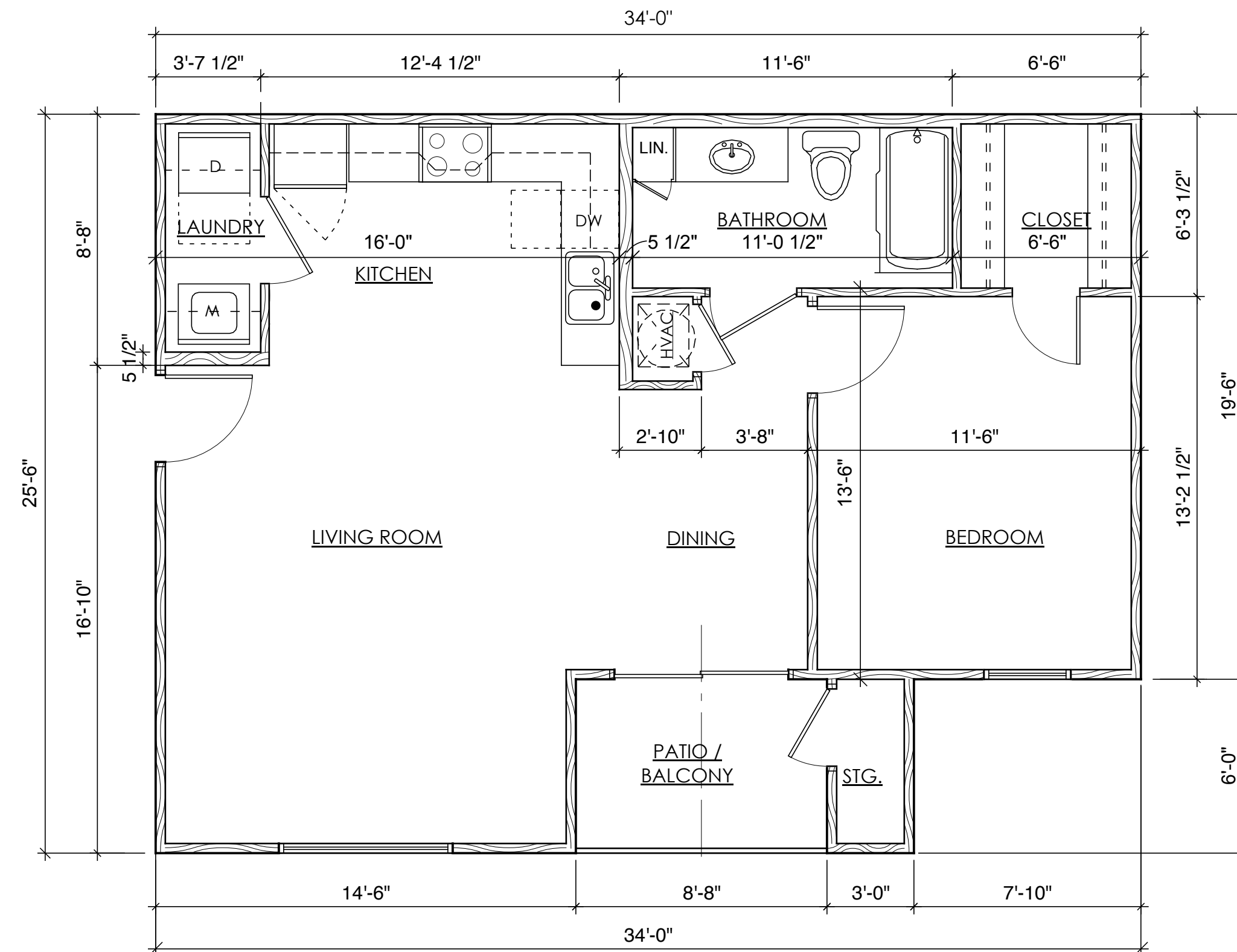
Willow Creek Apartments  
Caraway Road  
Jonesboro, Arkansas

of \_\_\_\_\_  
Sheet No:  
**A2.5**

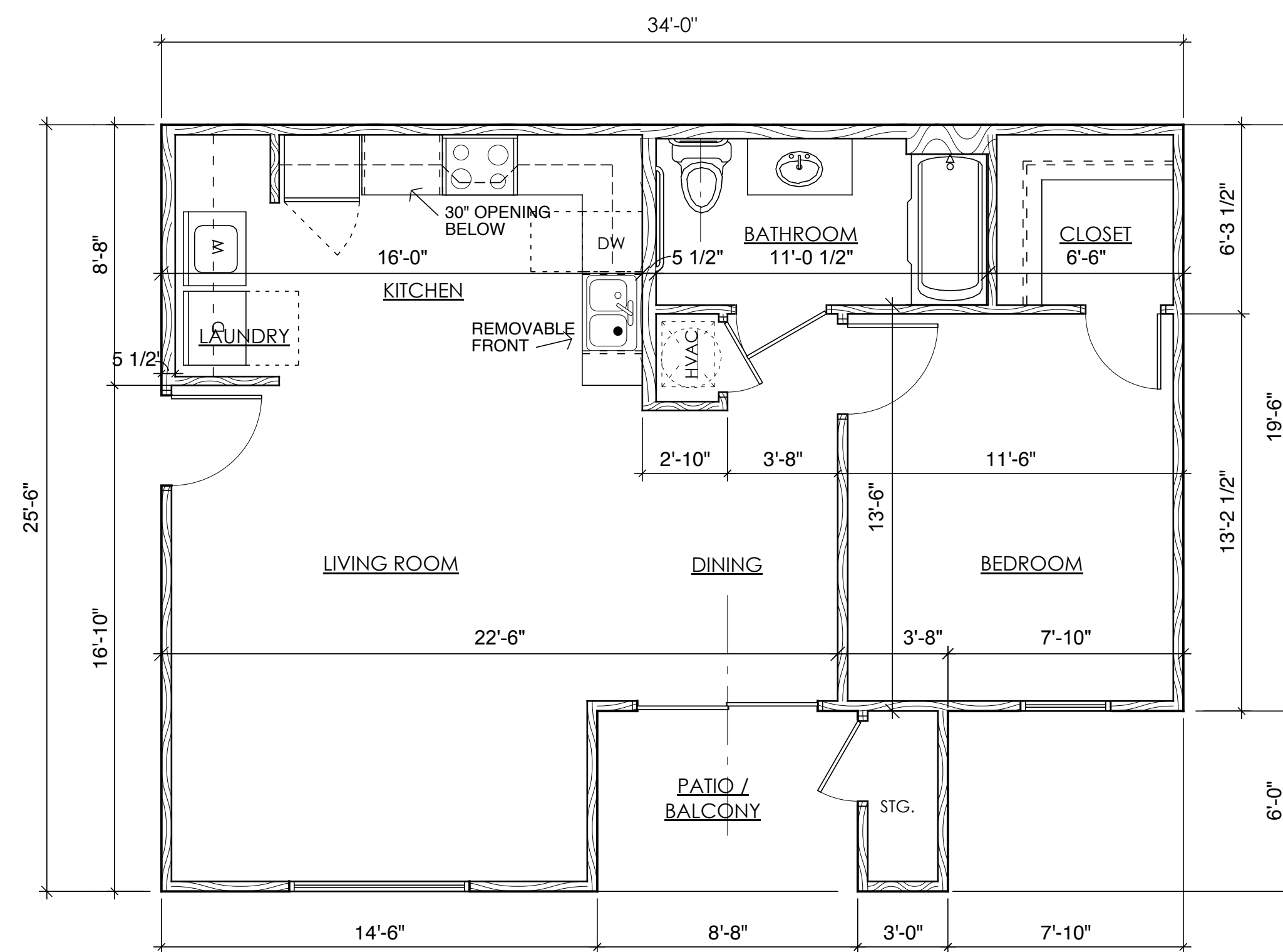


NOTE: WINDOW IN THIS LOCATION ONLY ON EAST SIDE OF BUILDING

1 TYPICAL ONE BEDROOM PLAN - 1A  
 1/4" = 1'-0"  
 650 S.F. (GROSS)



2 TYPICAL ONE BEDROOM PLAN - 1B  
 1/4" = 1'-0"  
 750 S.F. (GROSS)



3 ACCESSIBLE ONE BEDROOM PLAN - 1B  
 1/4" = 1'-0"  
 750 S.F. (GROSS)

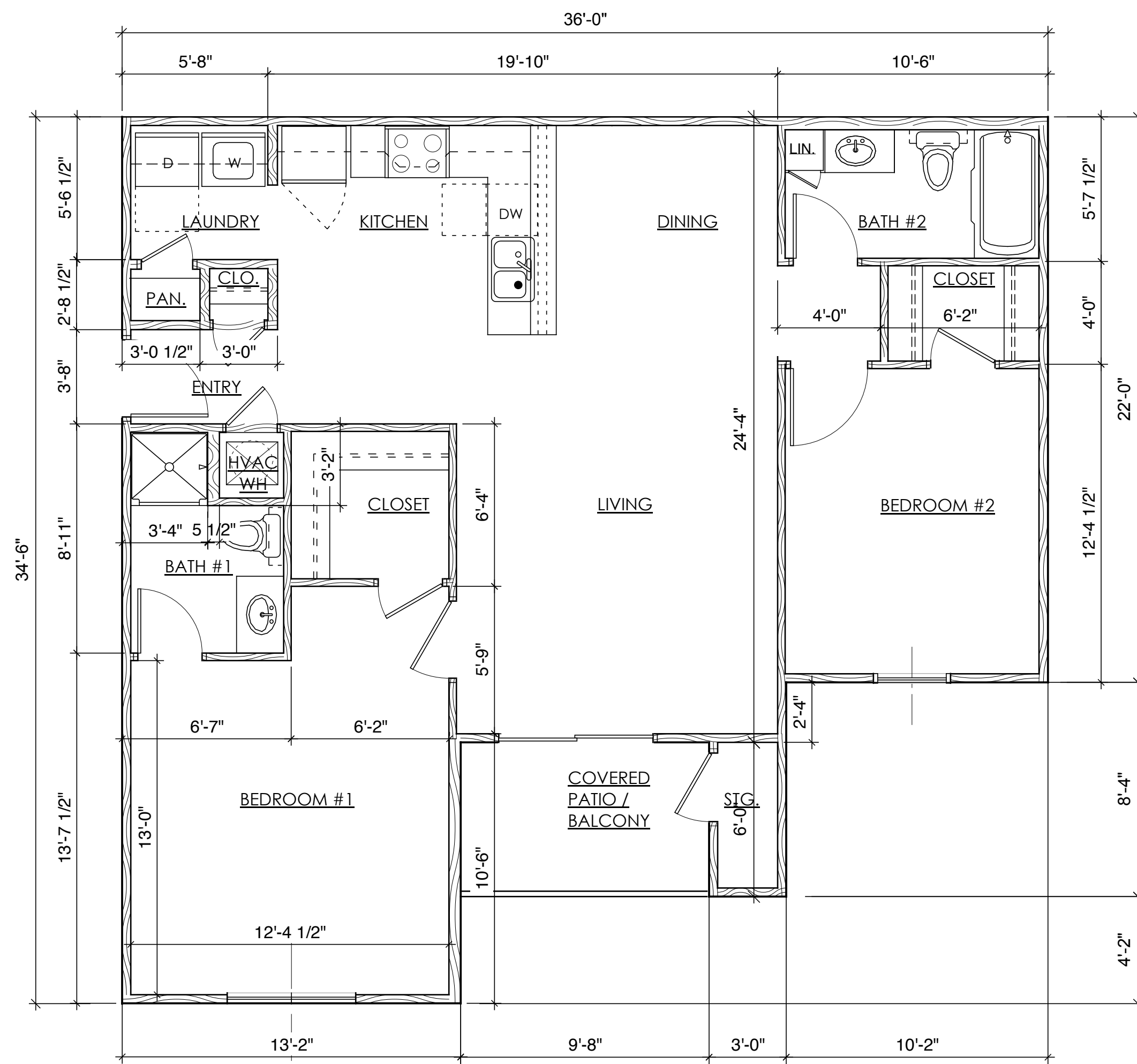
REV	DATE	DESCRIPTION

Willow Creek Apartments  
 Caraway Road  
 Jonesboro, Arkansas

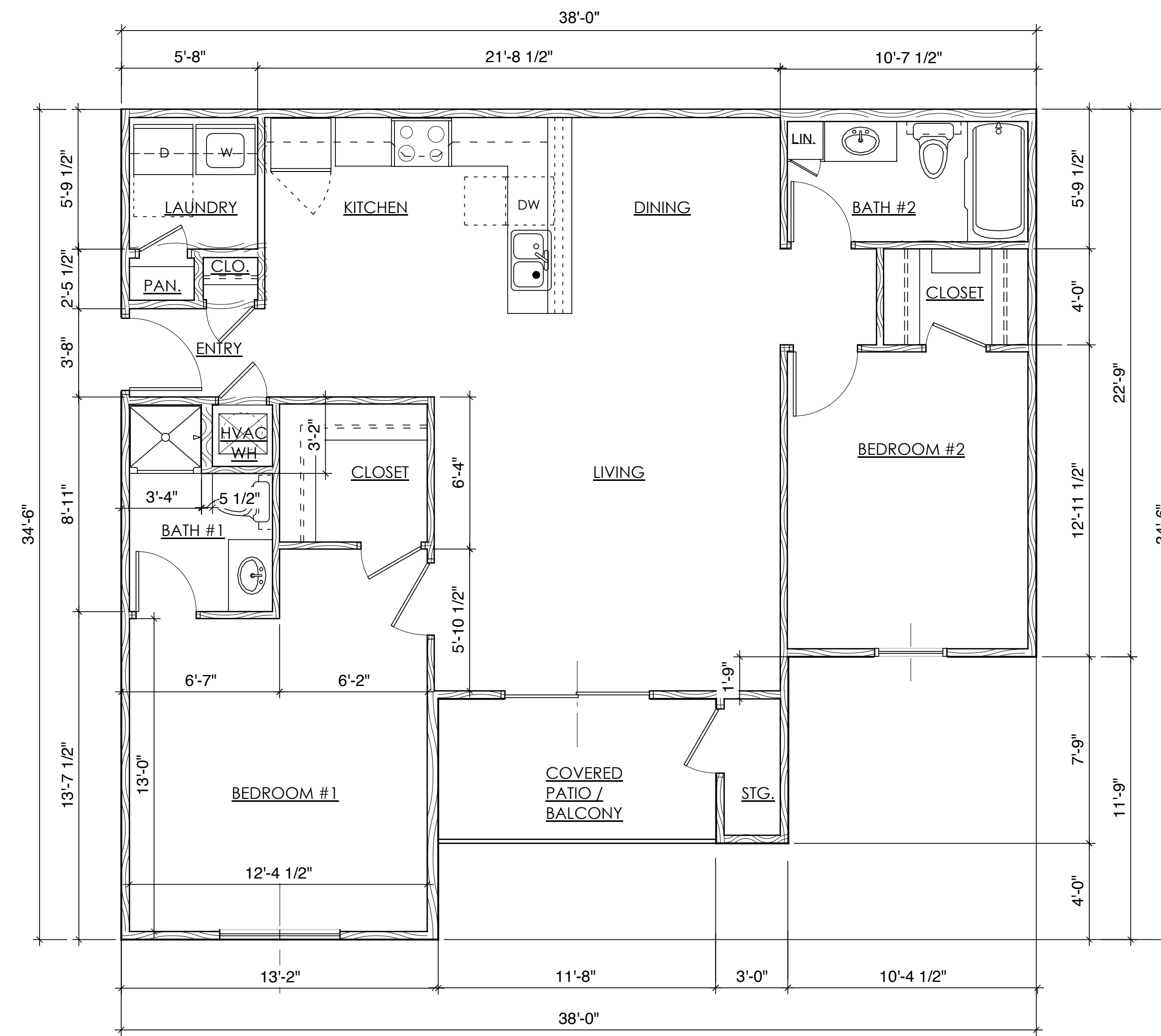
**H+W**  
 Heiple+Wiedower  
 Architects Planners  
 319 Pres. Clinton Avenue  
 Little Rock, AR 72201  
 (t) 501-707-0115  
 (f) 501-707-0118

Project No:  
**HW9-368**  
 Date:  
**6-26-09**  
 Sheet Title:  
**ONE BEDROOM  
 UNIT PLANS**

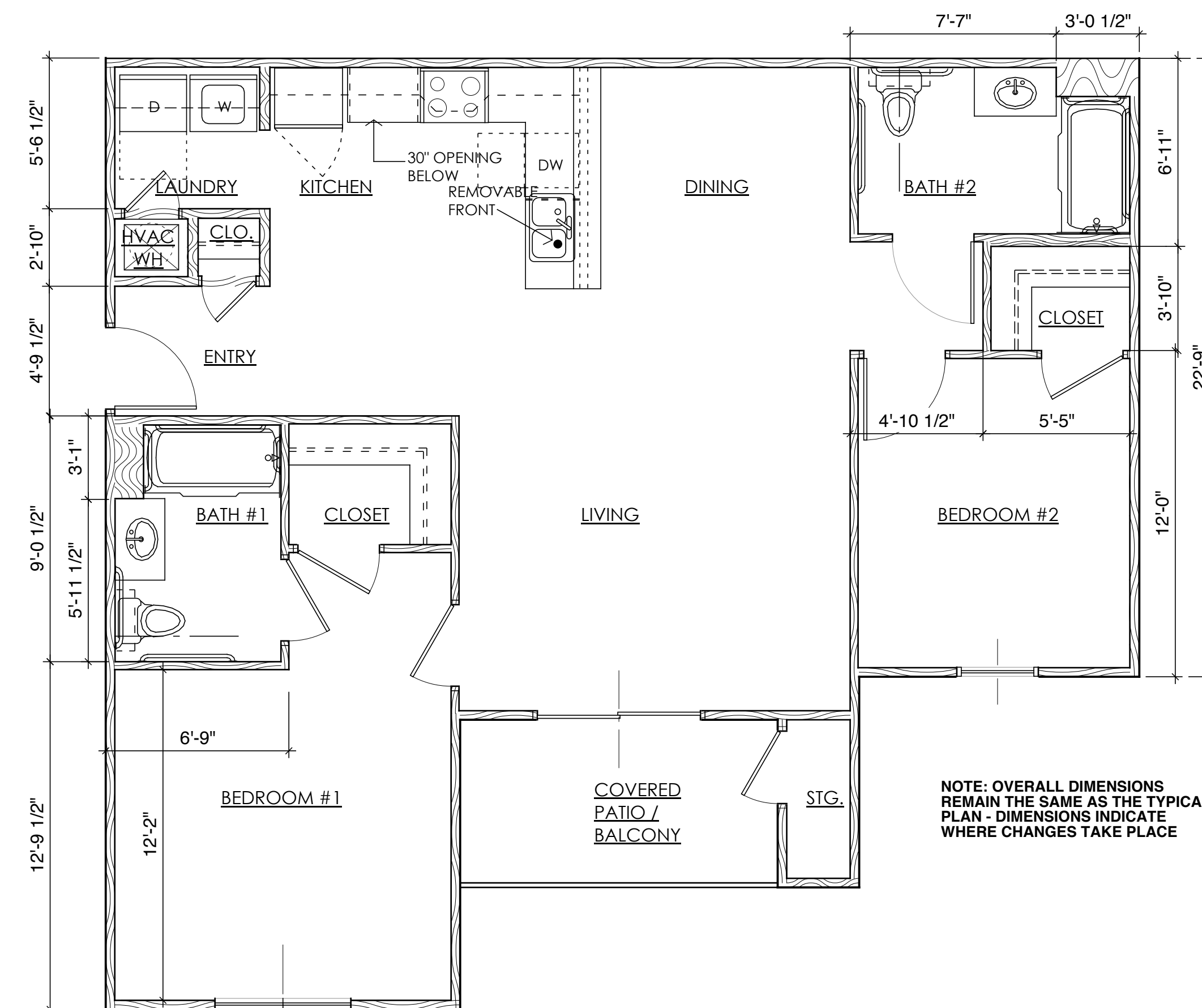
of  
 Sheet No:  
**A3.1**



1 TWO BEDROOM TWO BATH UNIT PLAN - 2A  
 1/4" = 1'-0" 983 SF (GROSS)



2 TWO BEDROOM TWO BATH UNIT PLAN - 2B  
 1/4" = 1'-0" 1050 SF (GROSS)



3 ACCESSIBLE TWO BEDROOM TWO BATH UNIT PLAN - 2B  
 1/4" = 1'-0" 1050 SF (GROSS)

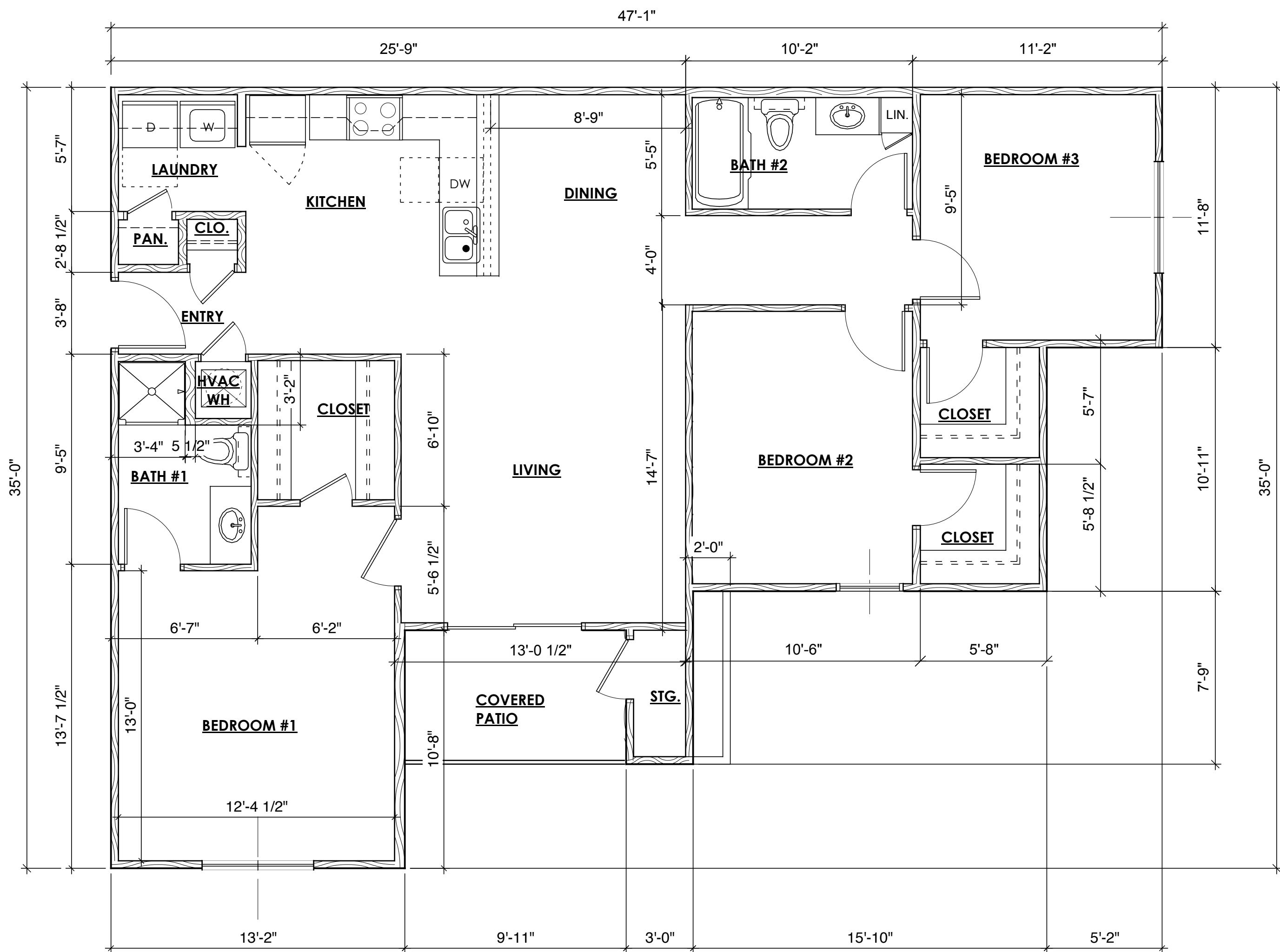
REV	DATE	DESCRIPTION

Willow Creek Apartments  
 Caraway Road  
 Jonesboro, Arkansas

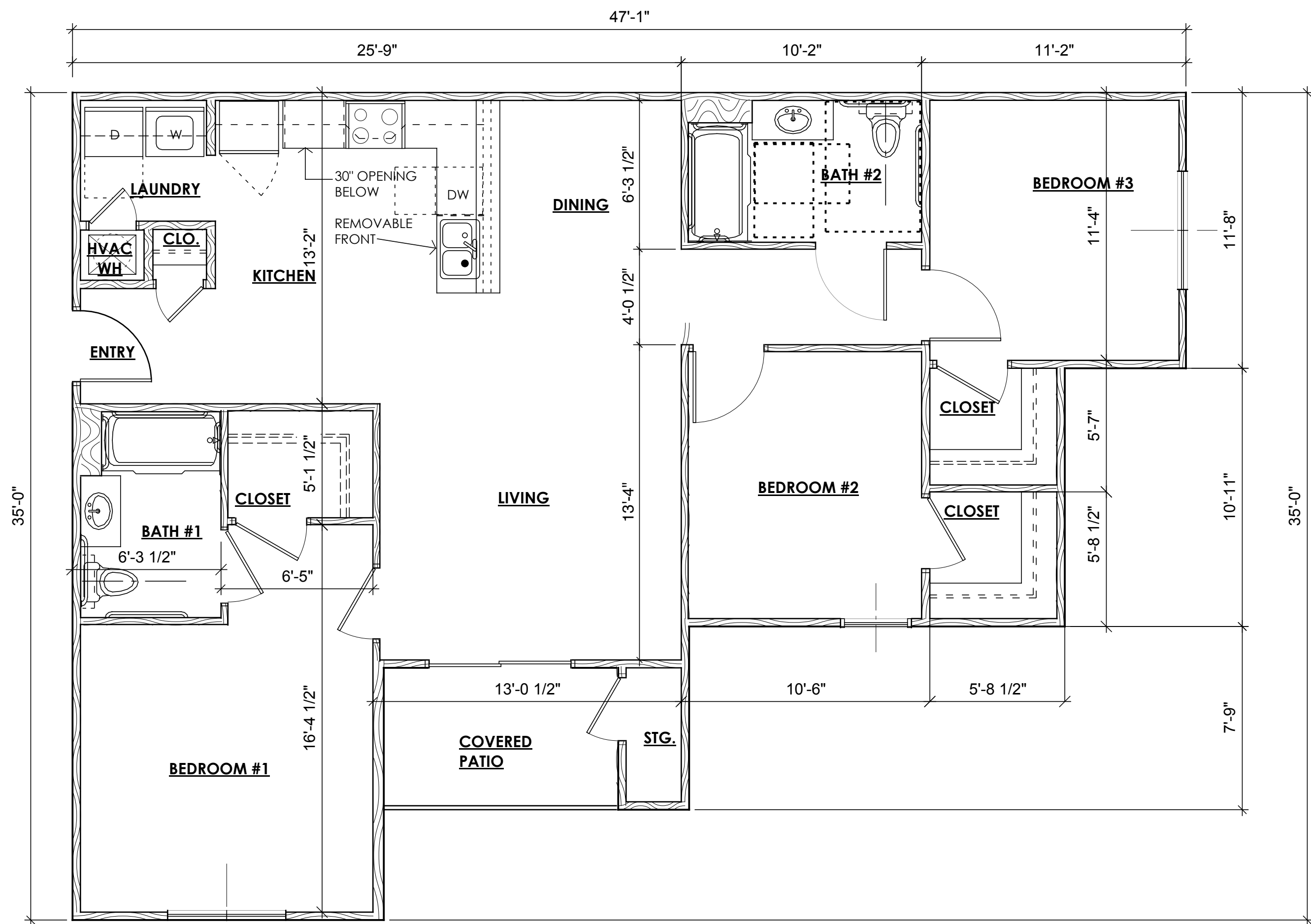
**H+W**  
 Heiple+Wiedower  
 Architects Planners  
 319 Pres. Clinton Avenue  
 Little Rock, AR 72201  
 (t) 501-707-0115  
 (f) 501-707-0118

Project No:  
**HW9-368**  
 Date:  
**6-26-09**  
 Sheet Title:  
**TWO BEDROOM  
 UNIT PLANS**

of \_\_\_\_\_  
 Sheet No:  
**A3.2**



1 TYPICAL THREE BEDROOM PLAN  
 1/4" = 1'-0" 1183 SF (GROSS)



2 ACCESSIBLE THREE BEDROOM PLAN  
 1/4" = 1'-0" 1183 SF (GROSS)

REV.	DATE	DESCRIPTION

Willow Creek Apartments  
 Caraway Road  
 Jonesboro, Arkansas

**H+W**  
 Heiple+Wiedower  
 Architects Planners  
 319 Pres. Clinton Avenue  
 Little Rock, AR 72201  
 (t) 501-707-0115  
 (f) 501-707-0118

Project No:  
**HW9-368**  
 Date:  
**6-26-09**  
 Sheet Title:  
**THREE  
 BEDROOM  
 UNIT PLANS**

of  
 Sheet No:  
**A3.3**