

N/F KEM JONES
BODY SHOP

N/F RESIDENCE

N/F VACANT LOT

N/F HYTROL

APPROXIMATE
WESTERN LIMITS
ZONE "X" FLOOD PLAIN

APPX. LOCATION OF
12" WATER LINE

C/L ARK. HWY 18 (HIGHLAND AVE.)

EXISTING
FORM POSITION
TOP 250.91
BUTT 247.42

WATERLINE TO BE MODIFIED
TO MAINTAIN 36 INCHES OF
SEPERATION BETWEEN STORM DRAIN

4" STORM DRAIN
32" ALLEP
INV. 247.00

OUTLET STRUCTURE #1
INV. 247.50

23" L.F. CMP
@ 0.60%

L=39.24'
R=25.00'
CD=S45°57'20"E
LC=35.33'

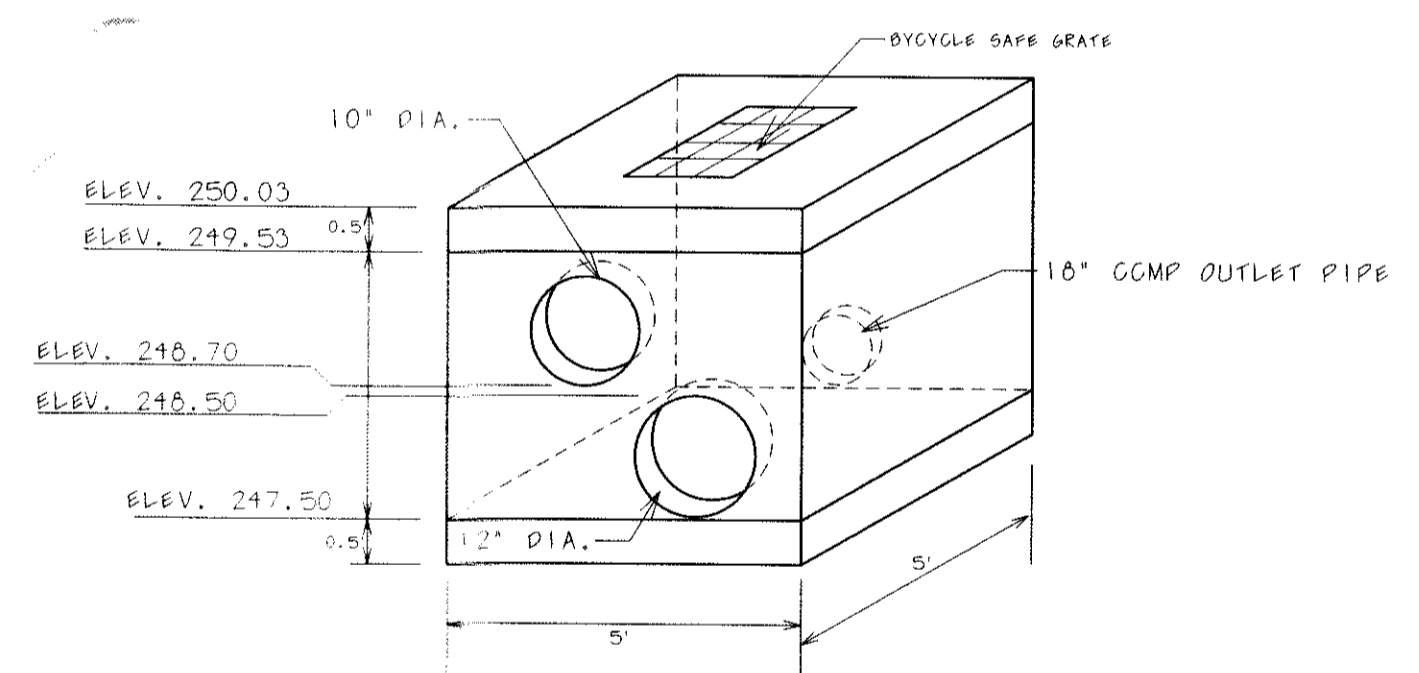
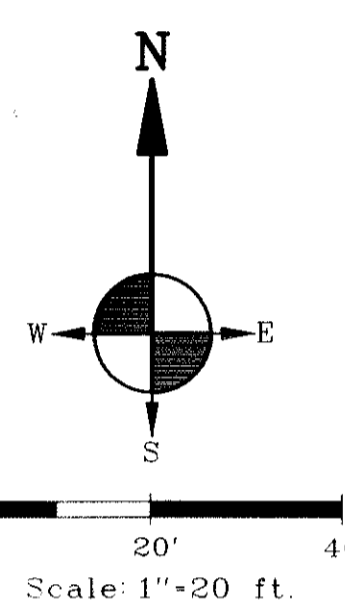
N/F YESTERDAYS
ANTIQUE MALL &
FLEA MARKET

N00°58'02"W, 316.46'

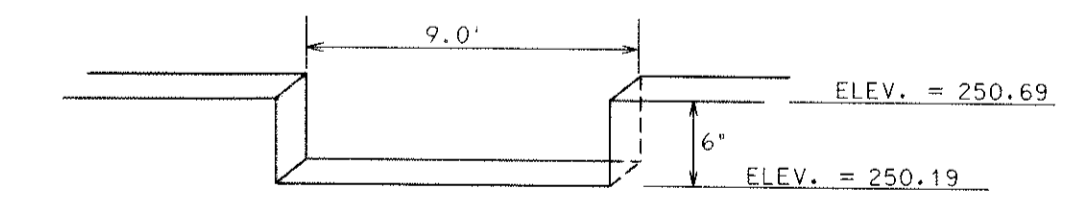
15,371.4 S.F.
FIN. FL. ELEV. = 252.10

L=99.03'
R=170.00'
CD=S15°42'47"W
LC=97.63'

N/F VACANT LOT



OUTLET STRUCTURE #1 DETAIL
N.T.S.



OUTLET STRUCTURE #2 DETAIL
N.T.S.

10' X 10'
DUMPSTER PAD
6" WOODEN PRIVACY
FENCE, GATED ON
NORTH SIDE

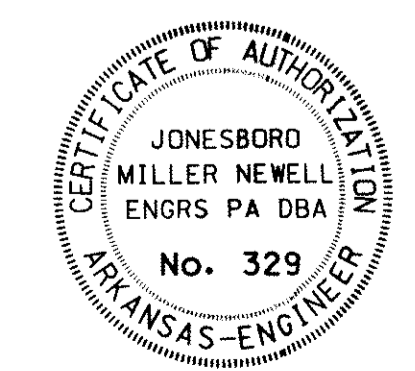
S85°58'55"W, 195.06'
OUTLET STRUCTURE #2
INV. 250.19

EXISTING 18" RCP
6' X 6' BOX
FES Z-1
CB Z-2
FES Z-3
FES Z-4

N/F NETTLETON
CONCRETE

APPROXIMATE
WESTERN LIMITS

N/F WAREHOUSE PALLETS



 HAMMAN NEWELL ENGINEERING	ENGINEERS SURVEYORS PLANNERS		203 Southwest Dr. Jonesboro, Arkansas 72401 Telephone: (870) 932-7880	
	PROPOSED GRADING AND DRAINAGE PLAN FOR STEVE EDWARDS JONESBORO, ARKANSAS			
Date 06-07-06	Scale 1" = 20'	Job No. 106044	Sheet No. 2 of 9	
Section 27	Township T14N	Range R4E	County CRAIGHEAD	2 of 9
ONLY COPIES WITH VIOLET COLORED SIGNATURE ARE VALID HNE COPIES				
Drwg File: C:\PROJ\106044\106044.dwg Plot Date: 10/17/06 At 05:42				
© 2006, Hamman Newell Engineering Drawn By: Rk Index: DF3A-0542				

N/F KEN JONES
BODY SHOP

N/F RESIDENCE

N/F VACANT LOT

N/F HYTROL

APPX. LOCATION OF
12" WATER LINE

C/L ARK. HWY 18 (HIGHLAND AVE.)

PROPOSED MH # 2

WATERLINE TO BE MODIFIED
TO MAINTAIN 36 INCHES OF
SEPERATION BETWEEN STORM DRAIN

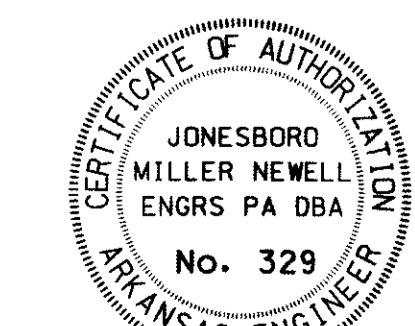
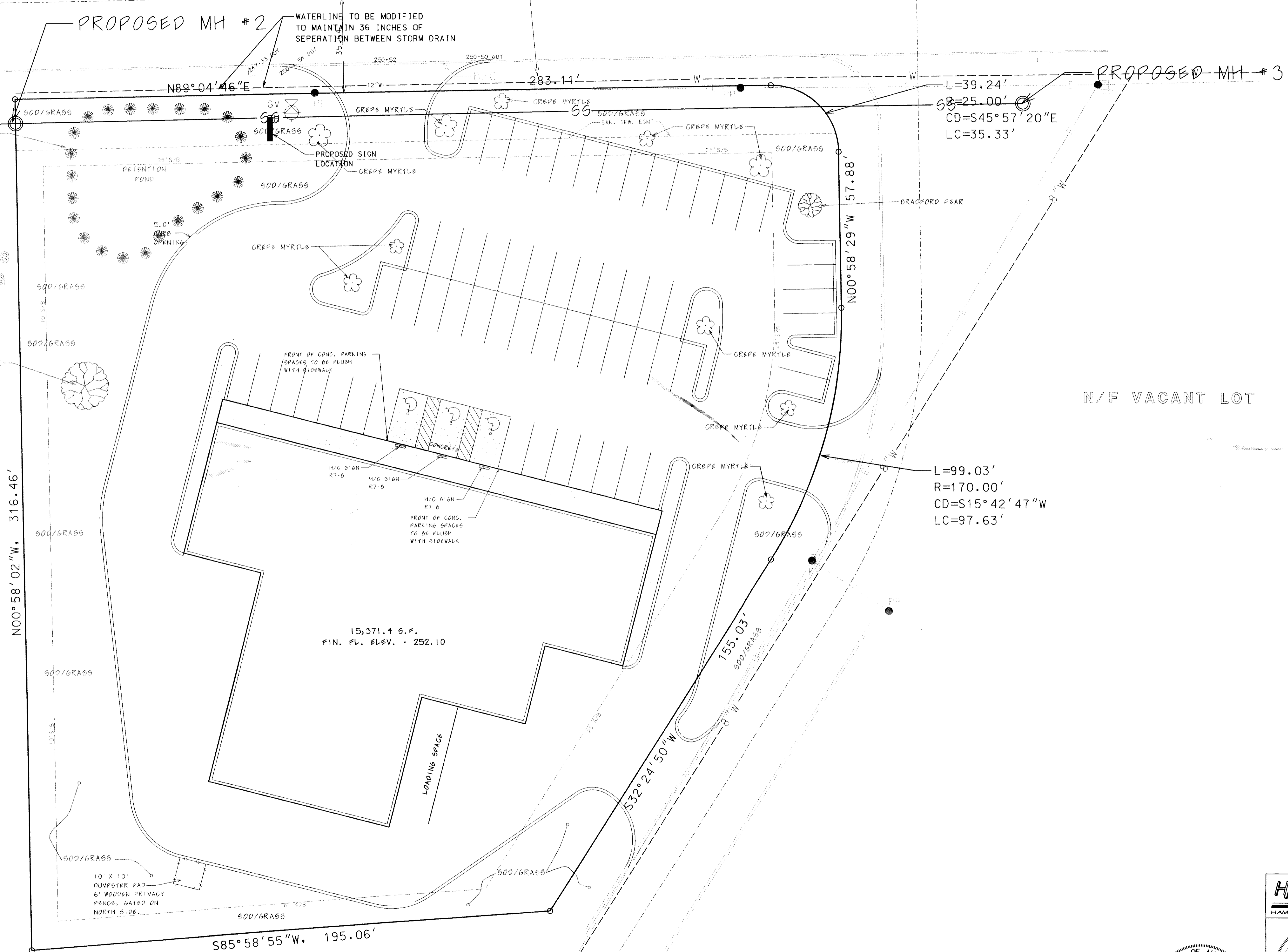
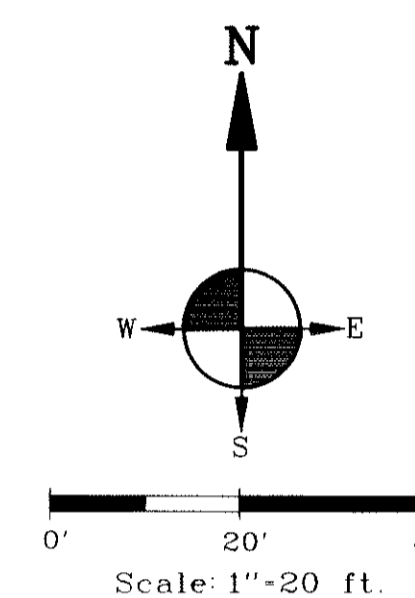
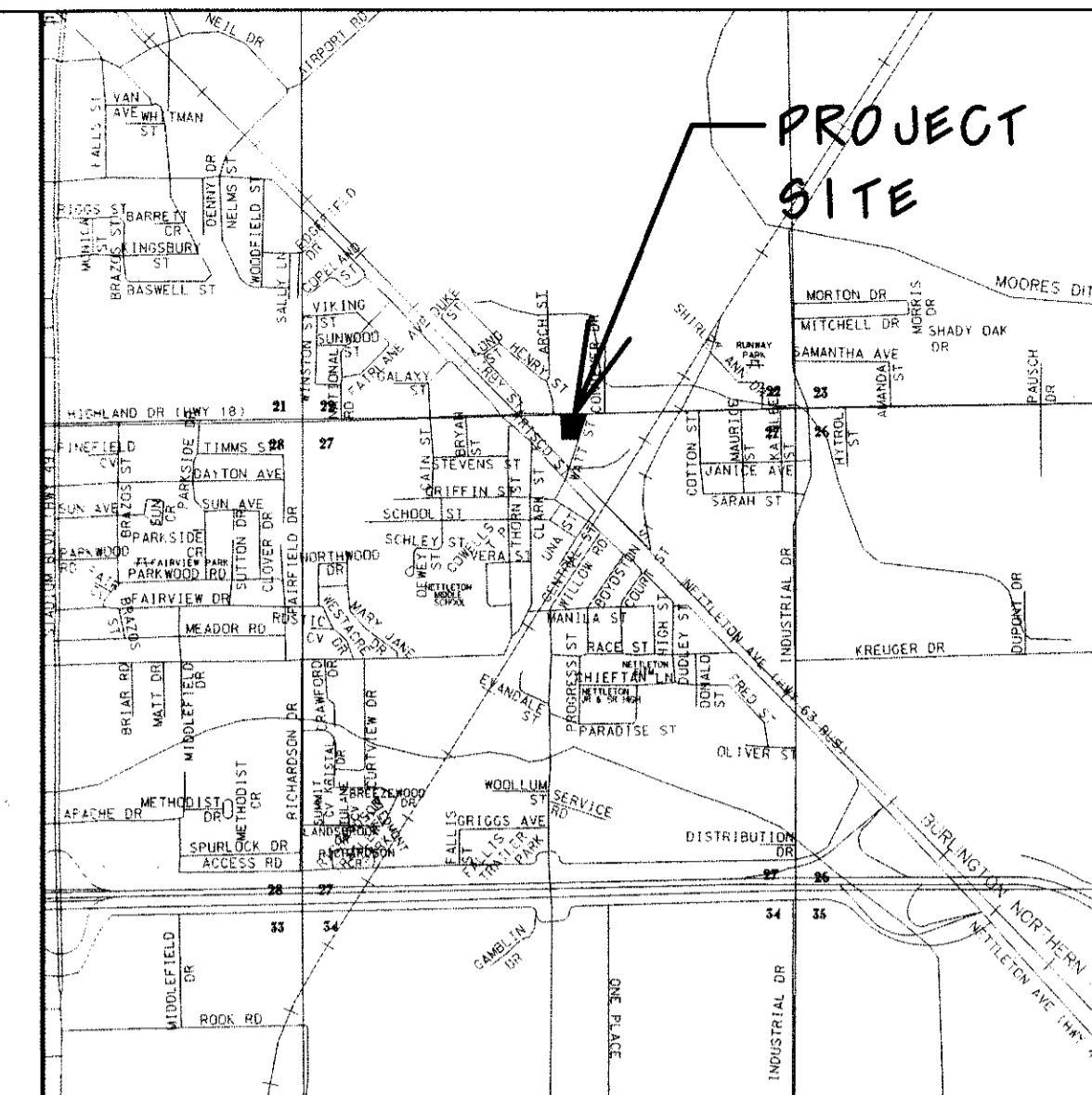
PROPOSED MH # 3

N/F YESTERDAYS
ANTIQUUE MALL &
FLEA MARKET

N/F VACANT LOT

N/F NETTLETON
CONCRETE

N/F WAREHOUSE PALLETS



HNE HAMMAN NEWELL ENGINEERING		ENGINEERS SURVEYORS PLANNERS		203 Southwest Dr. Jonesboro, Arkansas 72401 Telephone: (870) 932-7880	
LANDSCAPE PLAN FOR STEVE EDWARDS JONESBORO, ARKANSAS					
Date	Scale	Job No.	Sheet No.		
06-07-06	1"=20'	106014	4 of 9		
Section	Township	Range	County		
27	114N	R4E	CRAIGHHEAD		
ONLY COPIES WITH VIOLET COLORED SIGNATURE ARE VALID HNE COPIES					
Drwg File *		Print Date:		Index *	
C:\PROJ\106014\106014.dwg		PLOT DATE: 10/17/06 AT 06:42		Re	
© 2006, Hamman Newell Engineering		Drawn By:		Index * DESA-0542	