

State of Arkansas  
 County of Craighead  
 A TRUE COPY I CERTIFY.  
 W. FLEETWOOD, Chancery & Circuit Clerk  
*W. Fleetwood*

DINE HILL SUB-DIV. OF  
A PART OF SEC. 5 T.3N. R.4E  
CRAIGHEAD CO. ARK.  
 Scale 1" = 300'  
 Surveyed 1955 By  
LAYMAN & HAYWOOD  
 Reg. C.E.

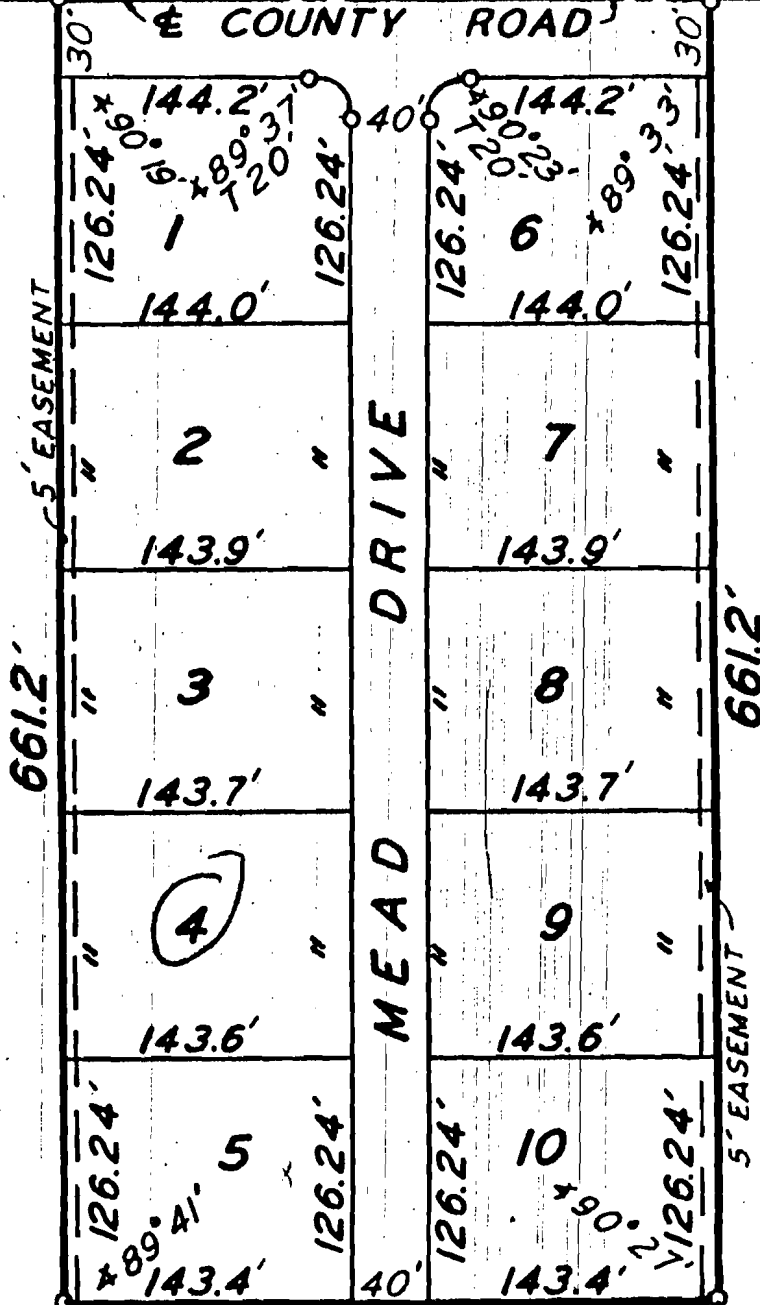
Filed for Record April 6-1956. 9:00 A.M. Seamy Taylor, Clerk  
 By Frances Estor, D.C.

EXHIBIT "B"

NW COR LOT 1  
(PINE HILL  
SUB'D)

328.4'

NE COR LOT 1  
(PINE HILL SUB'D)



SCALE: 1"=100'

SW COR LOT 1  
(PINE HILL  
SUB'D)

326.8'

SE COR LOT 1  
(PINE HILL SUB'D)

ROLLING HILLS SUBDIVISION

BEING A SUB-DIVISION OF LOT 1, PINE HILL SUB-DIVISION OF A PART OF SECTION 5, T-13-N, R-4-E, CRAIGHEAD COUNTY, ARKANSAS, (AS RECORDED IN BOOK 123, PAGE 34, IN THE OFFICE OF THE CIRCUIT COURT CLERK AND EX-OFFICIO RECORDER, CRAIGHEAD COUNTY, ARKANSAS).

OWNER'S CERTIFICATION

We hereby certify that we are the owners of the above described property; that we adopt the plat as shown hereon.

Pete Mead 7-31-64      Dorothy Mead 7/31/64  
Pete Mead                      Date                      Dorothy Mead                      Date

SURVEYOR'S CERTIFICATION

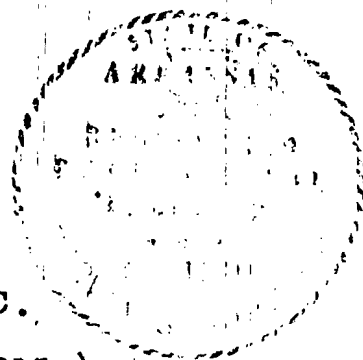
I hereby certify that the above plat is the result of a survey made in July 1964; that the monuments were found or set as noted thereon:

Associated Engineering Company, Inc.  
Jonesboro, Arkansas

H. S. Johnson 7-27-64  
H. S. Johnson, Ark. Reg. P. E. #1510

FILED FOR RECORD THIS JAN. 6TH, 1966 at 9:30 A.M. AND RECORDED IN PLAT DEED RECORD BOOK 158 PAGE 16.

SEARCY TAYLOR, CLERK  
BY Alie Taylor D.C.



(FOR DEDICATION DEED SEE DEED RECORD BOOK PAGE 315.)