

REZONING PLAT

LEGAL DESCRIPTION

Lot 19 of Replat of Lot 1 of DAVIS REPLAT OF LOT 15 OF J.A. LAMBERTH SUBDIVISION AND LOTS 16 AND 18 OF A REPLAT OF LOTS 16,17,18,21 OF J.A. LAMBERTH SUBDIVISION JONESBORO, ARKANSAS, as shown by plat in Book "B", Page 89; and Replat of Lot 19 of Rick Holcomb's Replat of Lots 19 and 20 of J.A. Lamberth Subdivision to Jonesboro, Arkansas, as shown by Plat in Book "B", Page 75.

SURVEYORS CERTIFICATE

This is to certify that I have on this date surveyed the above property in accordance with monuments found and set this plat on file to that survey.

Date _____



OWNERS CERTIFICATE

We hereby certify that we are the owners of the property shown and describe herein and that we adopt the plat of Subdivision and dedicated perpetual use all streets and easements as noted.

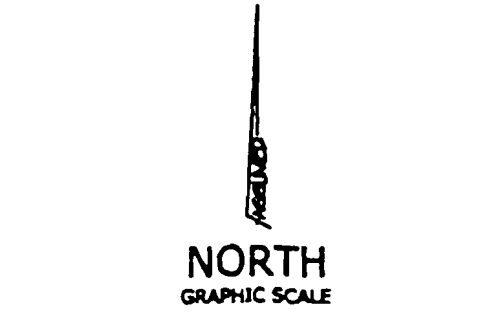
Tommy Davis

REZONING PLAT OF LOT 19 OF J.A. LAMBERTH SUBDIVISION TO THE CITY OF JONESBORO, CRAIGHEAD COUNTY, ARKANSAS

HIME LAND SURVEYING
6000 E. JOHNSON AVE.
JONESBORO, AR.
(870) 972-1288

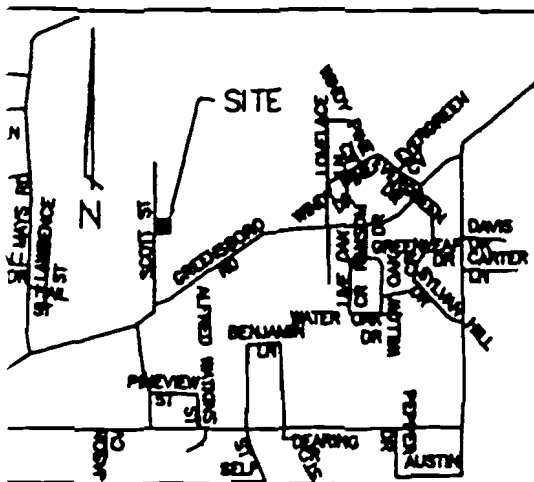
DRAWN BY: JWH	CHECKED BY: HH
SCALE: 1"=50'	
DATE: 8/01	REVISED: 7-28-01
JOB NUMBER	SHEET

HERBERT HIME PLS # 1142

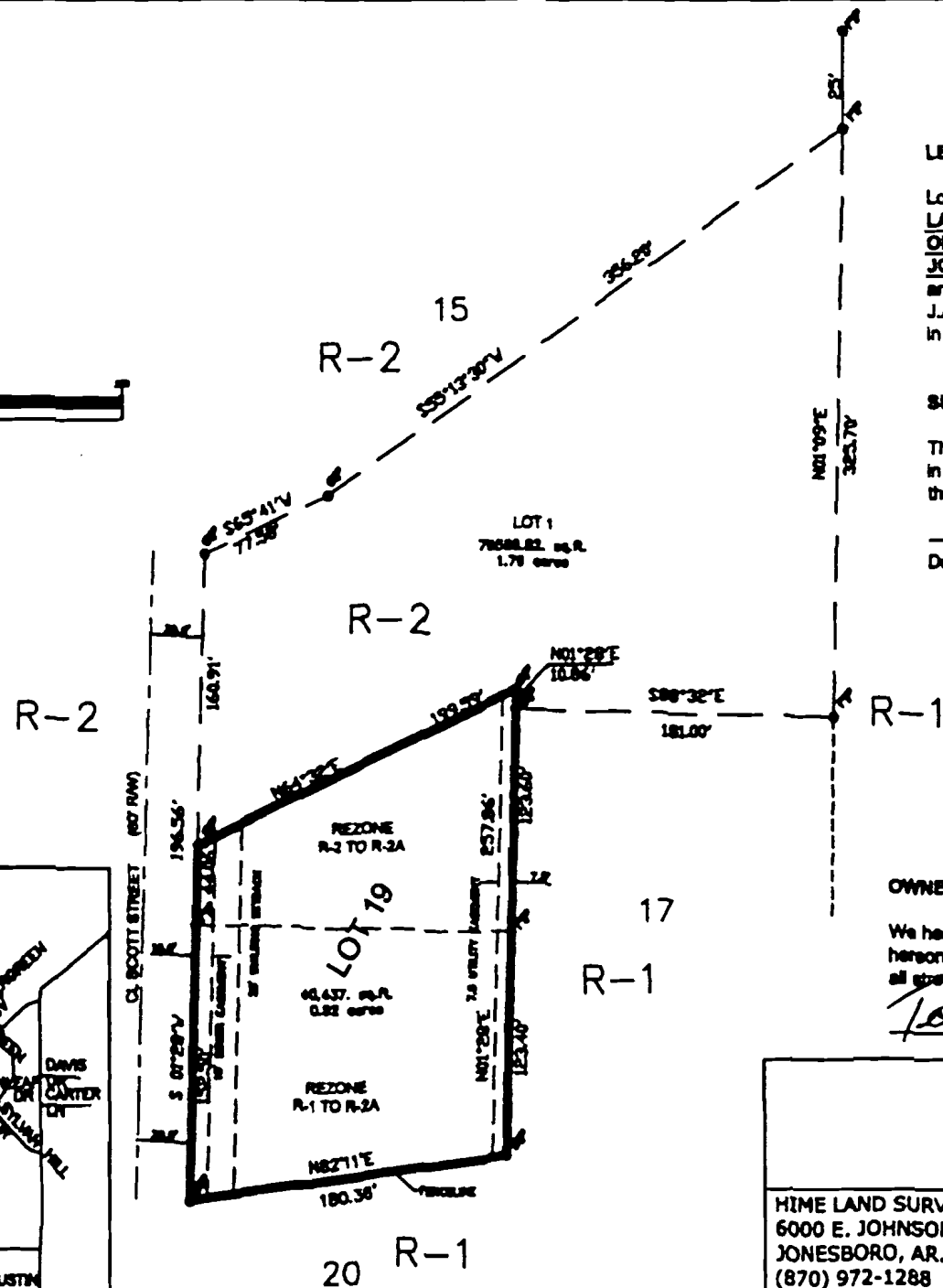


LEGEND

- SIP-SET 1/2" REBAR
- FIP-ROUND IRON PIN



VICINITY MAP



1"=200'