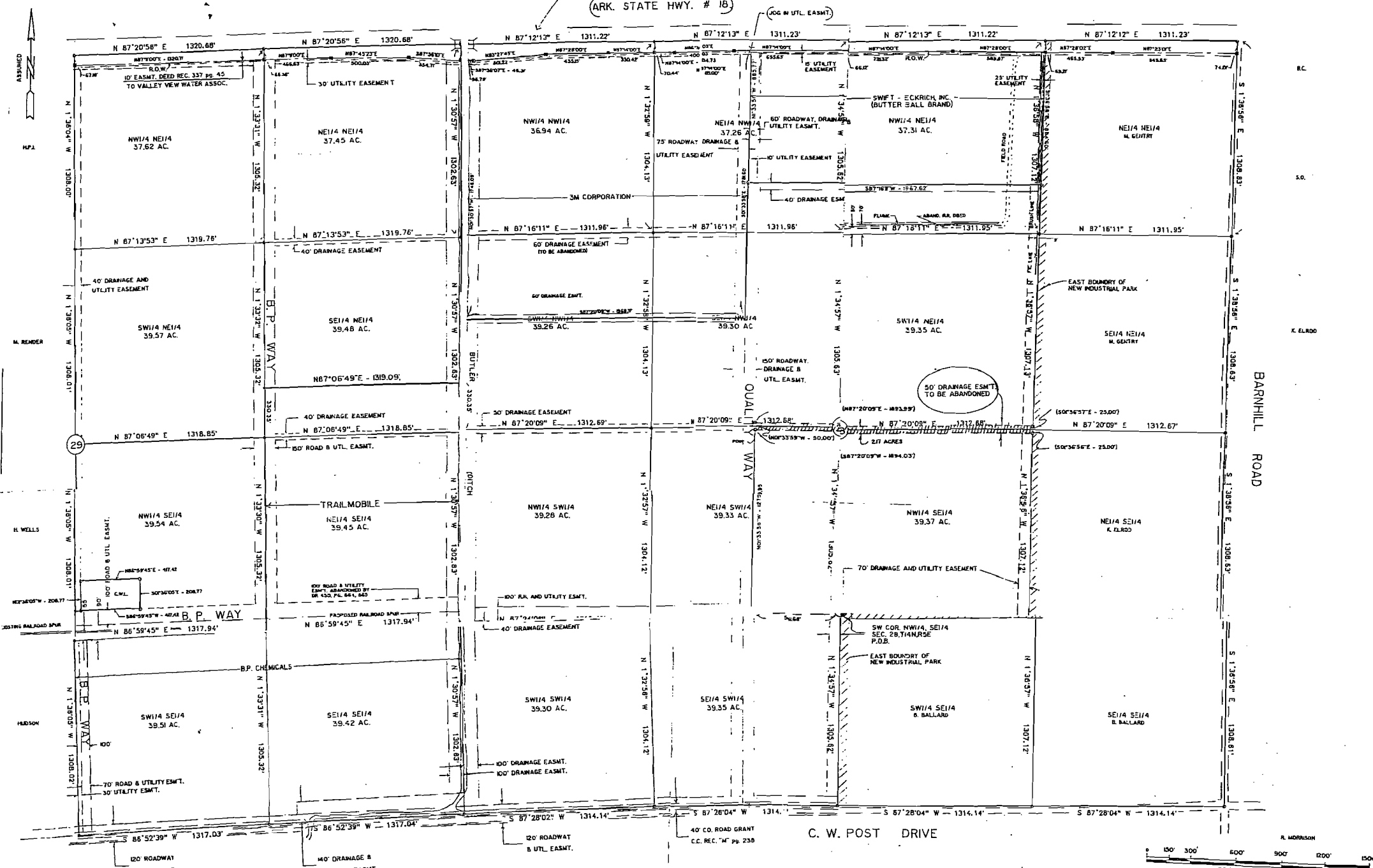
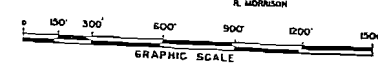


HIGHLAND DRIVE
 (ARK. STATE HWY. # 18)

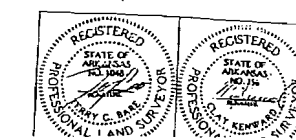


ASSUMED
 HP1
 M. REARDEN
 H. WELLS
 HUBSON
 C. WALKER
 M. BROWN
 R. CAMP

B.C.
 S.O.
 K. ELWOOD
 BARNHILL ROAD
 R. MORRISON



DEDICATION OF EASEMENTS: WE, BEING THE OWNERS/AGENTS OF THE EAST 1/2 OF SECTION 29, TOWNSHIP 14 NORTH, RANGE 5 EAST, SAID LANDS REFERRED TO AS 'CRAIGHEAD TECHNOLOGY PARK, JONESBORO, ARKANSAS, DO HEREBY DEDICATE ALL OUR BEST TITLE AND INTEREST TO THE PUBLIC USE FOREVER, THE EASEMENTS OF LENGTH, WIDTH AND LOCATION AS SHOWN ON THE PLAT HEREON, SUBJECT TO ALL RIGHTS OF WAY OR EASEMENTS OF RECORD. SAID EASEMENTS ARE FOR THE PURPOSE OF INSTALLATION AND MAINTENANCE OF PUBLIC UTILITIES, DRAINAGE SYSTEMS AND ROADWAY CONSTRUCTION AND MAINTENANCE. RAILROAD CONSTRUCTION AND MAINTENANCE SPECIFICALLY DEFINED HEREIN. SIGNED THIS 2ND DAY OF MARCH, 1990 BY: JONESBORO INDUSTRIAL DEVELOPMENT CORPORATION.



CRAIGHEAD TECHNOLOGY PARK
 JONESBORO, CRAIGHEAD CO. ARKANSAS
 SUBDIVISION OF THE E1/2 OF SEC. 29
 & ALL SEC. 28 T14N R5E