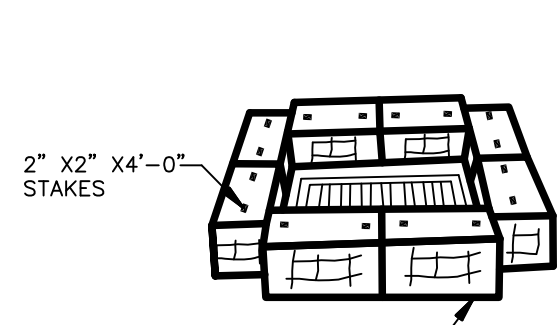


**GENERAL NOTES:**  
 GEOTEXTILE FABRIC SHALL BE SPLICED TOGETHER WITH A SEWN SEAM ONLY AT A SUPPORT POST, OR TWO SECTIONS OF FENCE MAY BE OVERLAPPED INSTEAD. PAYMENT OF ADDITIONAL MATERIAL FOR OVERLAP WILL NOT BE MADE.

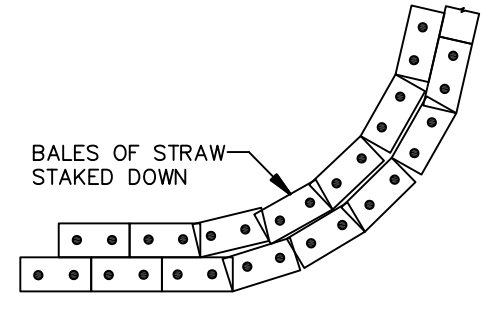
1

**SILT FENCE DETAIL**

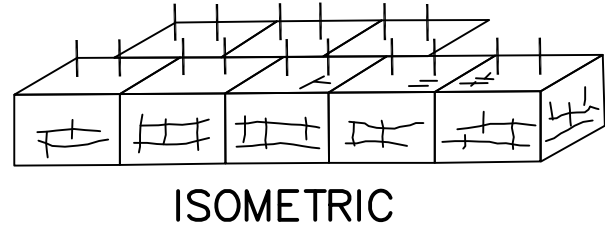
N.T.S.



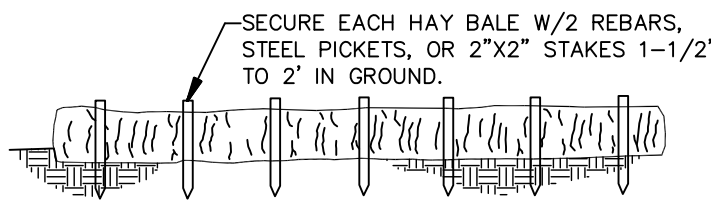
**INLET TRAP**  
 N.T.S.  
 INSTALL AFTER INLETS ARE CONSTRUCTED BEFORE LANDSCAPING IS COMPLETED.



**PLAIN VIEW**  
 DOUBLE ROW OF BALES OF STRAW TO BE PLACED PRIOR TO THE START OF ROUGH GRADING. BALES ARE TO BE PLACED AS CLOSELY TOGETHER AS POSSIBLE IN ORDER TO PROVIDE MAXIMUM PROTECTION.



**ISOMETRIC**



**NOTES:**  
 WIRE OR NYLON BOUND BALES ARE REQUIRED FOR DURABILITY.

REQUIRED AT LOW AREAS OF SITE WHERE SURFACE DRAINAGE OCCURS DURING GRADING OPERATIONS & PRIOR TO LANDSCAPING COMPLETION.

**TEMPORARY SEDIMENT BARRIER**  
 N.T.S.

**GENERAL NOTES – EROSION BALES**

**DESCRIPTION:** STRAW OR HAY EROSION BALES MAY BE USED AS FILTERS ALONG THE TOE OF FILL SLOPES, AS EROSION CHECKS IN DITCHES, AND AS SEDIMENT TRAPS AT INLETS AND OUTLETS. STRAW BALES MAY BE PLACED BELOW FILL SLOPES TO PROTECT ROADS, AND AS ENERGY DISSIPATORS FOR HIGH VELOCITY RUNOFF.

**CONSTRUCTION:** BALES SHALL BE LAID TO MAINTAIN TIGHT JOINTS. EROSION BALES WILL NOT FILTER SEDIMENT OUT OF WATER IF THE WATER IS ALLOWED TO FLOW BETWEEN, AROUND, OR UNDERNEATH THE BALES. THE BALES SHOULD BE ENTRENCHED 6 INCHES AND ANCHORED SECURELY.

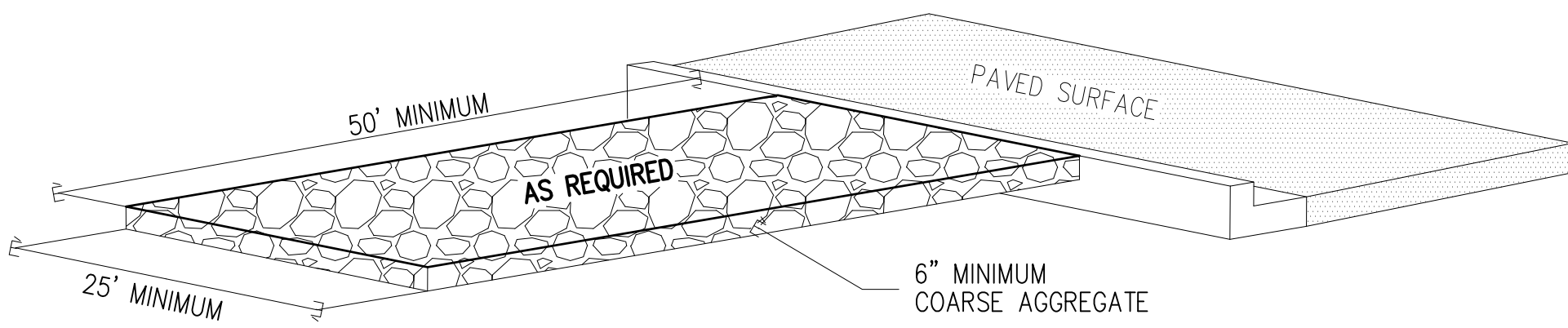
**MAINTENANCE:** EROSION BALES REQUIRE FREQUENT INSPECTION AS THEY DETERIORATE QUICKLY AND MAY NEED TO BE REPLACED WHEN NO LONGER NEEDED, THE ACCUMULATED SEDIMENT SHALL BE SPREAD, SEED, AND MULCHED WITH THE EROSION BALES AS APPROVED BY THE ENGINEER.

HAY BALES ARE A TEMPORARY MEASURE ONLY. THEY SHALL BE INSTALLED, REPAIRED OR REPLACED AT THE DIRECTION OF THE ENGINEER.

2

**STRAW BALE SILT TRAP**

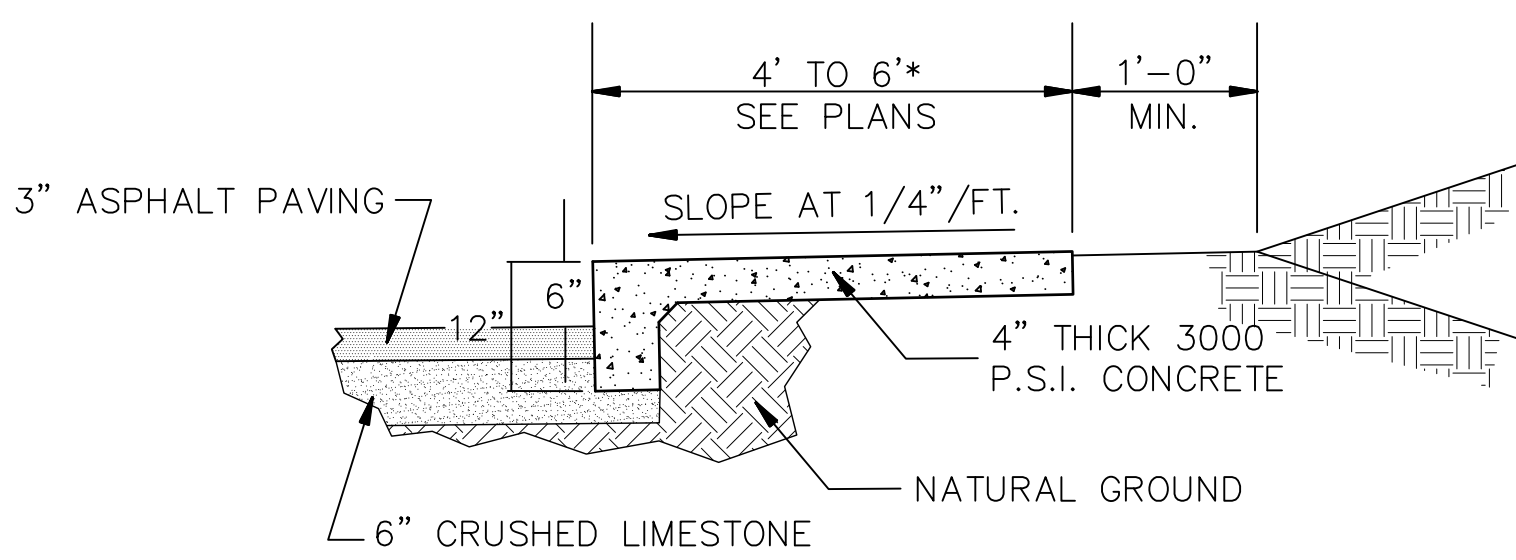
N.T.S.



3

**B-STONE MUD ROAD DETAIL**

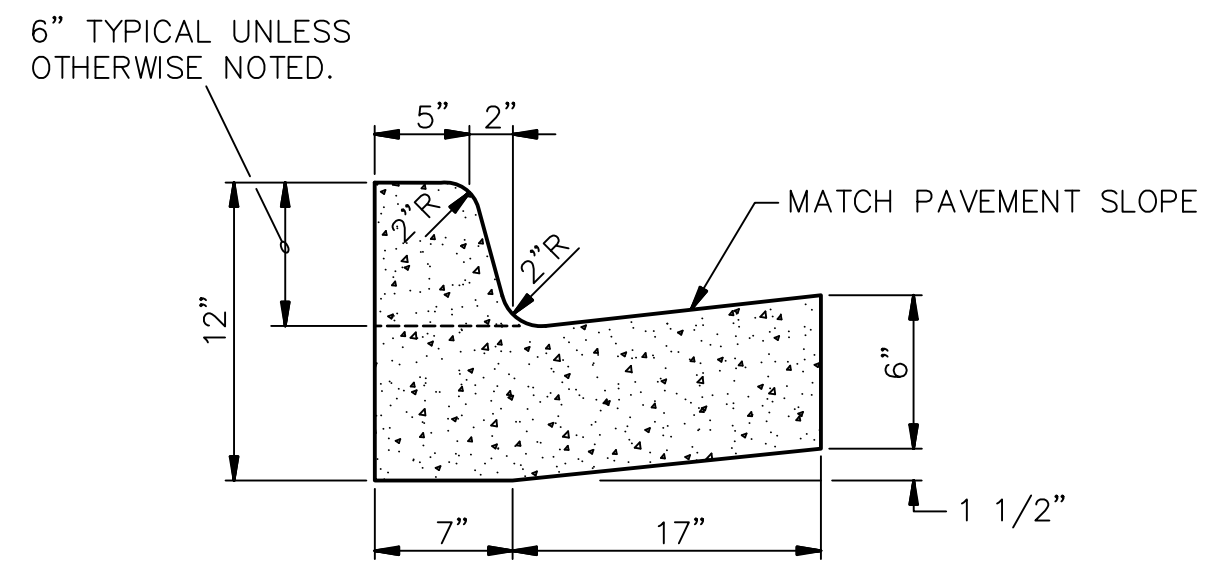
N.T.S.



4

**SIDEWALK AT ASPHALT PAVING**

N.T.S.



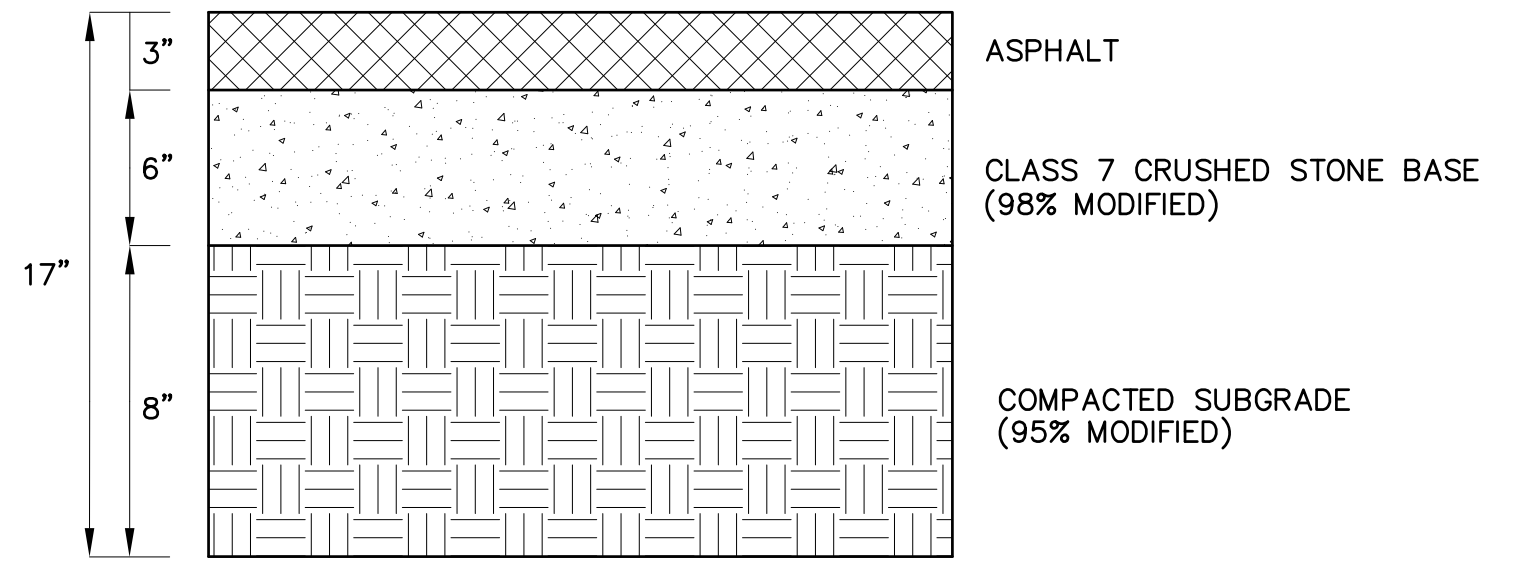
TYPE "A" (BARRIER) RESIDENTIAL & COLLECTOR STREETS

5

**COMBINATION CURB AND GUTTER**

N.T.S.

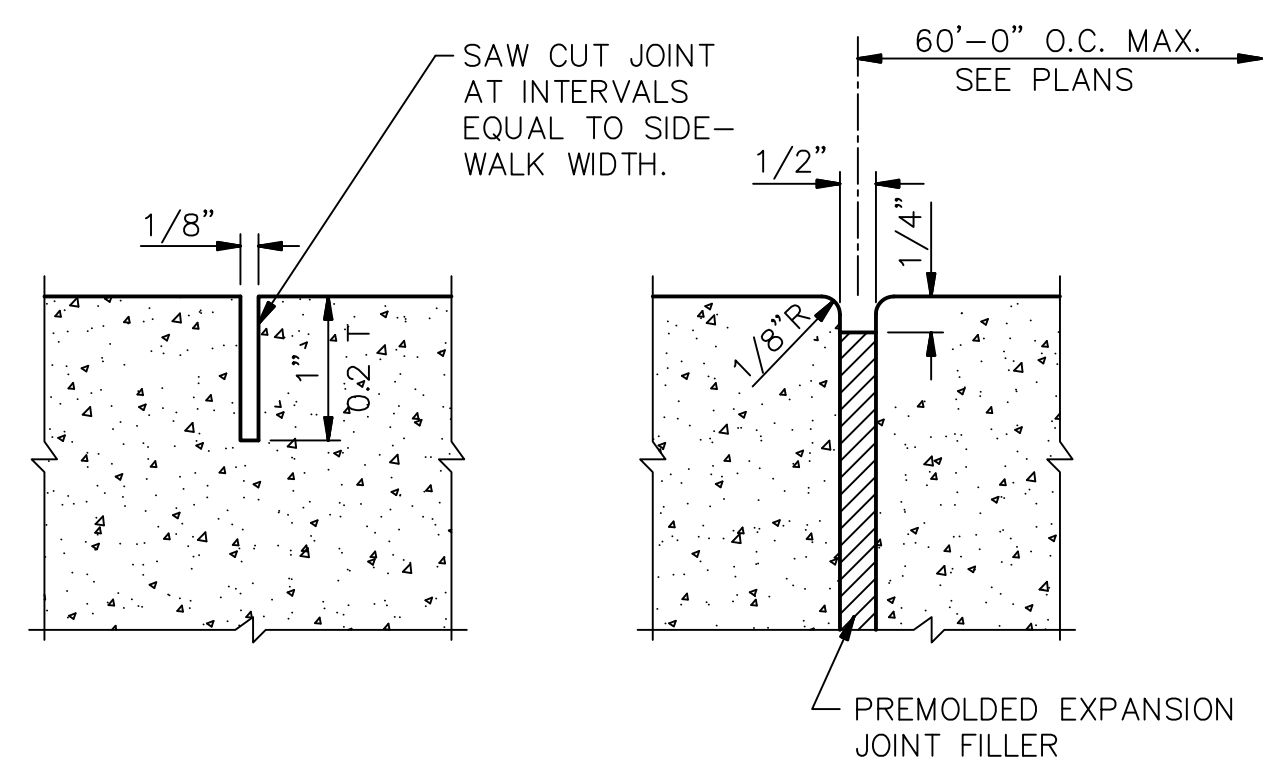
NOTE: CONTRACTION AND EXPANSION JOINTS SHALL BE CONSTRUCTED IN ACCORDANCE WITH THE PLANS AND SPECIFICATIONS.



6

**TYPICAL ASPHALT PAVING DETAIL**

N.T.S.



CONTRACTION JOINT (CJ)

EXPANSION JOINT (EJ)

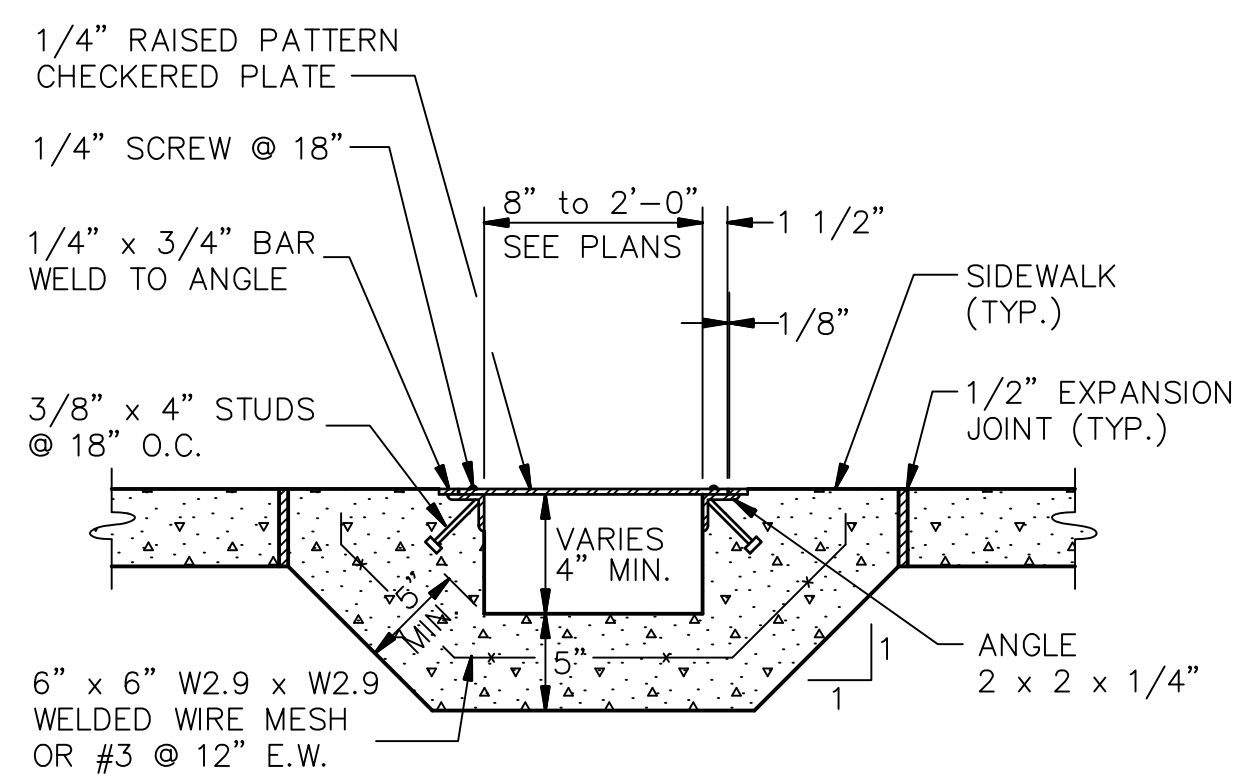
NOTE:

PROVIDE EXPANSION JOINT WHERE SIDEWALK ABUTTS CURB AND NEXT TO STRUCTURES AND DRIVEWAYS.

7

**TYPICAL SIDEWALK JOINT DETAILS**

N.T.S.



8

**CURB DRAIN**

N.T.S.

9