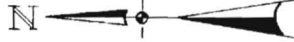




CERTIFICATE OF SURVEY

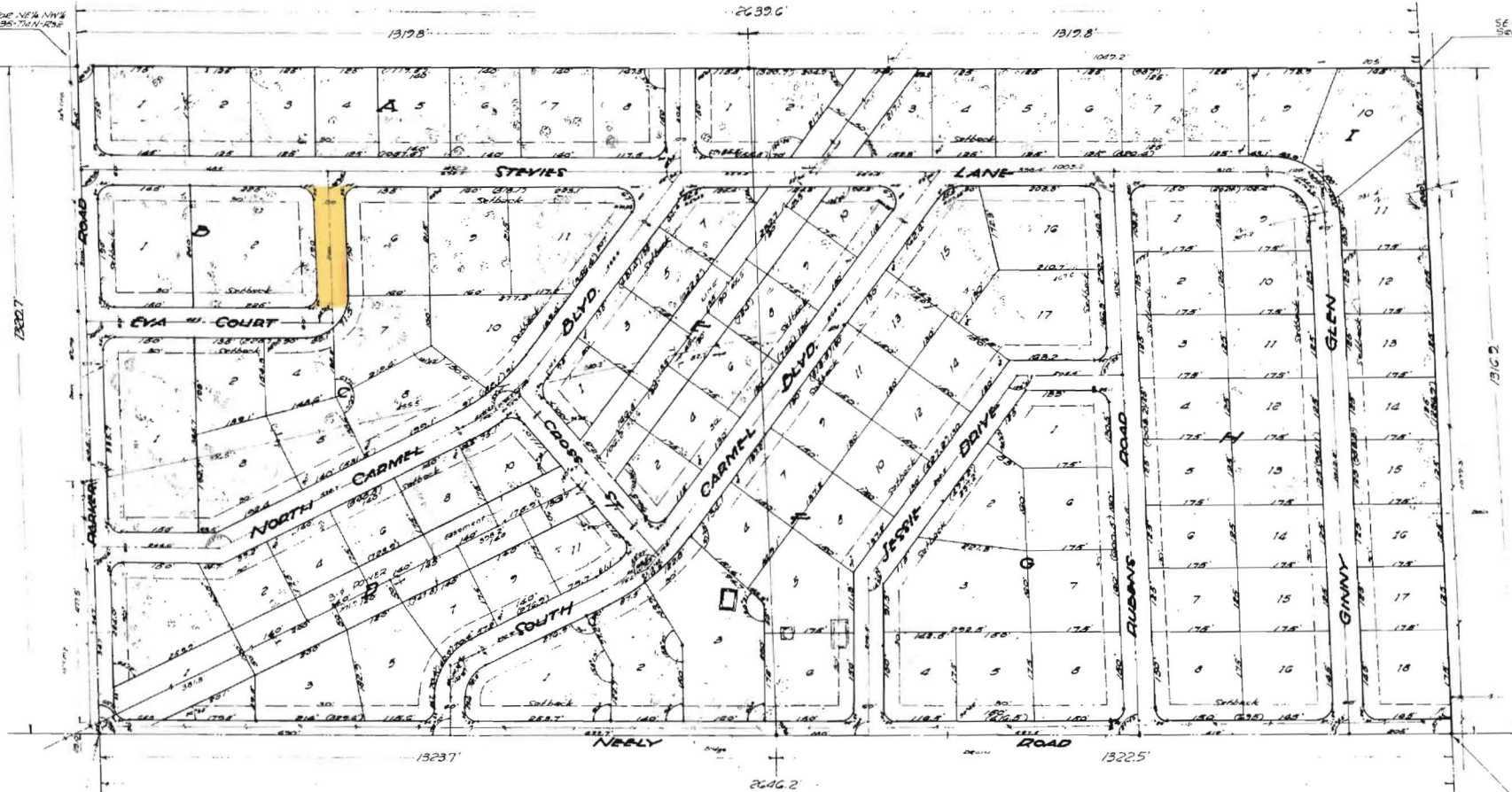
This is to certify that Fred Haywood & Associate, Registered Professional Civil Engineers, have surveyed the E 1/2 of the NW 1/4 of Sec. 35 T14N R3E, Craighead Co., Arkansas being more particularly as follows: Begin at the Northeast corner of the NW 1/4 of Sec. 35 T14N R3E thence West on the Section line 1320.7' to the Northwest corner of NW 1/4 of the NW 1/4 of Sec. 35 aforesaid; thence S1°50'0" along the West line of the NW 1/4 of the NW 1/4 of Sec. 35 aforesaid 248.2' to the Southwest corner of NW 1/4 of Sec. 35; thence N89°40'0" along the South line of the NW 1/4 of the NW 1/4 of Sec. 35 T14N R3E 1318.9' to the Southeast corner of NW 1/4 of the NW 1/4 of Sec. 35 aforesaid; thence N155°0'0" along the East line of NW 1/4 of the NW 1/4 of Sec. 35 aforesaid 2639.6' to the point of beginning. The above described tract contains 80.01 acres.

Fred Haywood & Associate  
By: [Signature]  
Eng. C.E. 2088



NE 1/4 NW 1/4 SEC. 35 T14N R3E

SE 1/4 NW 1/4 SEC. 35 T14N R3E



NW 1/4 NW 1/4 SEC. 35 T14N R3E

SW 1/4 NW 1/4 SEC. 35 T14N R3E

**GRIFFIN SUBDIVISION**  
OF  
**E 1/2 OF NW 1/4 SEC. 35 T14N R3E**  
**CRAGHEAD CO., ARK.**  
Scale 1" = 100'  
Surveyed by P. H. G. S. by  
Fred Haywood & Assoc.

COLDWELL - GRIFFIN TRACE	
FRED HAYWOOD & ASSOCIATES Consulting Engineers - Joplin, Mo.	SCALE 1"=100'
DATE 2-14-08	APPROVED BY [Signature]
NE 1/4 NW 1/4 - SE 1/4 NW 1/4 - SEC. 35-14-3	
DRAWING NUMBER Y-128	