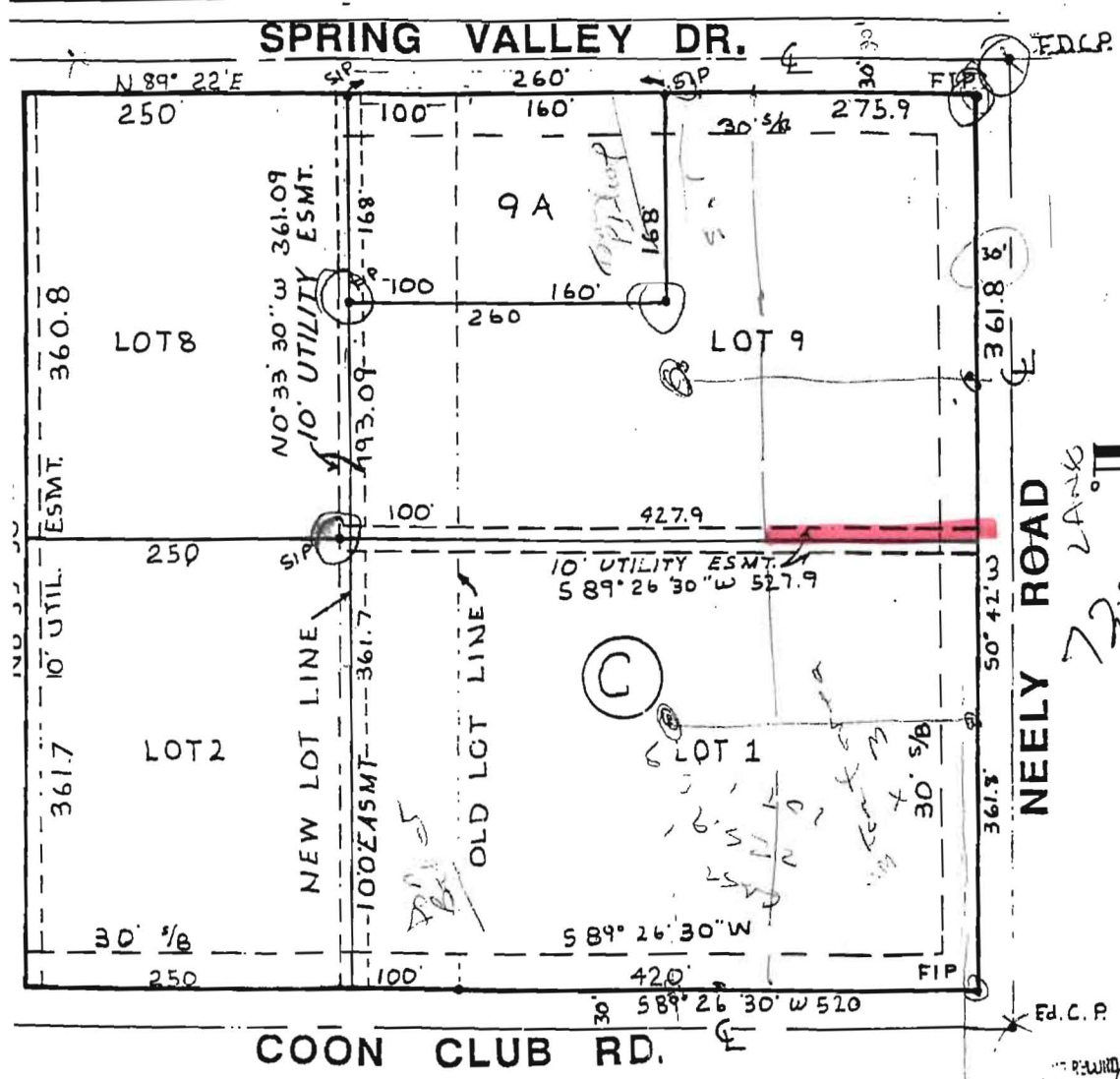


Billy & Betty Gerlach  
Jackie



REPLAT OF LOTS 1, 2, 8, and 9  
BLOCK C  
OF A  
REPLAT  
OF  
PART OF SPRING VALLEY SUBDIVISION  
(RECORDED IN PLAT CABINET A, PAGE 25)  
JONESBORO, ARKANSAS

**OWNER'S CERTIFICATION:**  
We hereby certify that we are the owners of the property shown and described hereon, that we adopt the Replat and dedicate perpetual use of all streets and easements as noted.

Robert L. Bishop  
LILLIE BAKER BISHOP

**SURVEYOR'S CERTIFICATION:**  
I hereby certify that the plat shown and described hereon is the result of a survey made in March, 1987, that it is a true and accurate survey and the monuments were found or set as noted.

ASSOCIATED ENGINEERING CO., INC.  
JONESBORO, ARKANSAS  
Marc., 27, 1987



RECORDED  
17 April 1987  
5:30 P.M.

Swain McJannet

part Cabinet  
# B PAGE 44  
A G