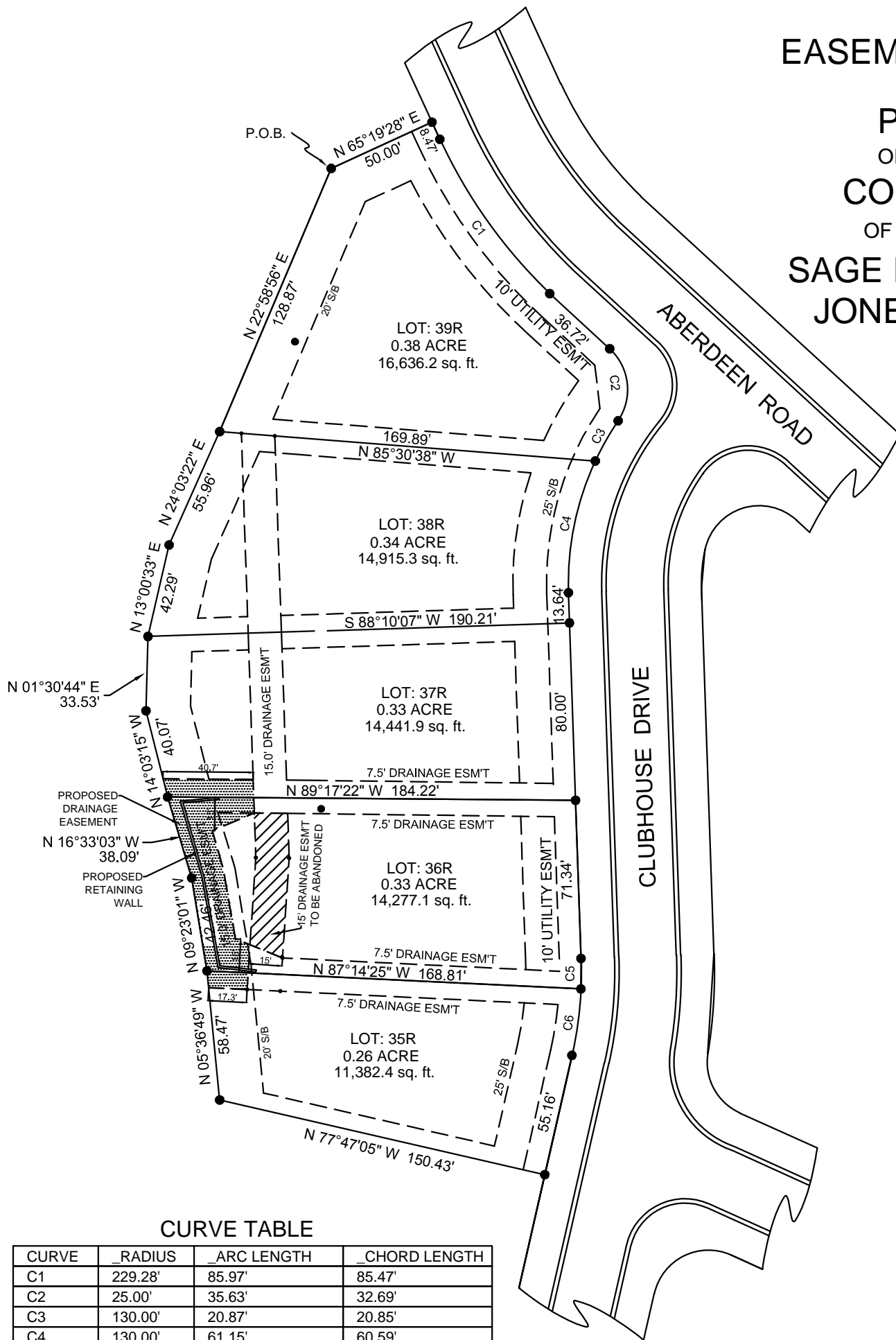


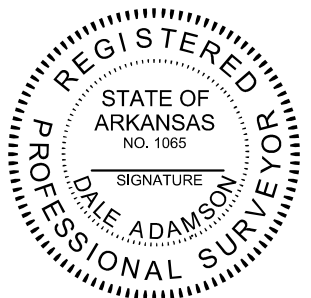
PART OF THE NORTHWEST QUARTER OF SECTION 35, T15N-R4E, CRAIGHEAD COUNTY, ARKANSAS, BEING MORE PARTICULARLY DESCRIBED AS FOLLOWS; COMMENCE AT THE NW CORNER OF SAID SECTION 35; THENCE N 89°54'08" E 1312.25 FEET; THENCE S 00°04'54" W 35.88 FEET; THENCE S 88°57'01" E 239.16 FEET; THENCE S 76°05'01" E 219.40 FEET; THENCE S 04°53'14" W 41.64 FEET; THENCE ON A CURVE TO THE LEFT WITH A RADIUS OF 25.00 FEET ARC DISTANCE OF 41.41 FEET; THENCE S 10°01'03" W 140.49 FEET; THENCE ON A CURVE TO THE RIGHT WITH A RADIUS OF 780.00 FEET ARC DISTANCE OF 214.49 FEET; THENCE ON A CURVE TO THE LEFT WITH A RADIUS OF 352.00 FEET ARC DISTANCE OF 274.45 FEET; THENCE S 71°06'35" W 60.00 FEET; THENCE SOUTHEASTERLY ON A CURVE TO THE LEFT WITH A RADIUS OF 412.00' AN ARC DISTANCE OF 41.60 FEET; THENCE S 24°40'32" E 162.65 FEET; THENCE S 65°19'28" W 50.00 FEET TO THE POINT OF BEGINNING; THENCE S 06°36'35" W 130.00 FEET; THENCE S 01°57'14" E 182.03 FEET; THENCE S 03°48'21" W 90.11 FEET; THENCE S 12°51'04" W 26.58 FEET; THENCE N 77°47'05" W 30.47 FEET; THENCE N 05°36'49" W 58.47 FEET; THENCE N 09°23'01" W 42.46 FEET; THENCE N 16°33'03" W 38.09 FEET; THENCE N 14°03'15" W 40.07 FEET; THENCE N 01°30'44" E 33.53 FEET; THENCE N 13°00'33" E 42.29 FEET; THENCE N 24°03'22" E 55.96 FEET; THENCE N 22°58'56" E 126.87 FEET TO THE POINT OF BEGINNING, CONTAINING 0.43 ACRES, MORE OR LESS.

**15' DRAINAGE
EASEMENT ABANDONMENT
OF LOT 36R OF
POOL'S REPLAT
OF LOTS 35R THRU 39R OF
COPELAND'S REPLAT
OF LOTS 2-10 AND LOTS 27-50
SAGE MEADOWS PHASE 2-C
JONESBORO, ARKANSAS**



CURVE TABLE

CURVE	RADIUS	ARC LENGTH	CHORD LENGTH
C1	229.28'	85.97'	85.47'
C2	25.00'	35.63'	32.69'
C3	130.00'	20.87'	20.85'
C4	130.00'	61.15'	60.59'
C5	170.04'	13.74'	13.74'
C6	170.04'	30.24'	30.20'



OWNERS CERTIFICATE
WE HEREBY CERTIFY THAT WE ARE THE OWNERS OF THE PROPERTY SHOWN AND DESCRIBED HEREON AND THAT WE HEREBY DEDICATE PERPETUAL USE OF ALL STREETS AND EASEMENTS AS SHOWN.

LOTS 36R

OWNERS SIGNATURE _____

DATE _____



PLAT OF SURVEY

**LEGACY HOMES OF NEA, LLC.
3116 PRESWICK, JONESBORO, AR 72401**

ADAMSON SURVEYING, 1504 BRANCHWOOD LANE,
JONESBORO ARKANSAS, 72404 PH: 932-5900

PLAN SCALE:
1" = 60.00'

REVISION

DATE: 07/28/2015

SHEET ONE OF ONE