

Former Wolf Den Pawn Shop



Property to the west of Pawn Shop



APARTMENTS NORTH OF JOHNSON IN JONESBORO

- Westminster Apartments
- M & M Properties
- Ridge Crossing
- Walker Court
- Craighead Place Apartments
- Garden Manor
- Caymon Villa
- Sundance Townhomes
- Cedar Heights
- Cedar Manor
- Kevin Lyles/Fox Hollow
- Wolf Den Apartments
- Wolf Creek Apartments
- 8 Apartments across street from Wolf Creek
- Caraway and Belt Street Apartments
- Scott + Greensboro - apartments/duplexes (12+1)
- Pineview + Scott - apartments/duplexes
- Marshall Melrose
- Stadium View Apartments
- Cameron Place
- Belt Street / Calion Street - Apartments
- Duplexes on Belt - No Names on Buildings
- Apartments - Bill and Alfred Watkins
- Benedictine Manor
- Brownlee Rentals

To Be Built

- Greensboro Village
Phase 1 - 264
Phase 2 - 336

- Sage Meadows
61 Units

Apartments South of Johnson By ASU

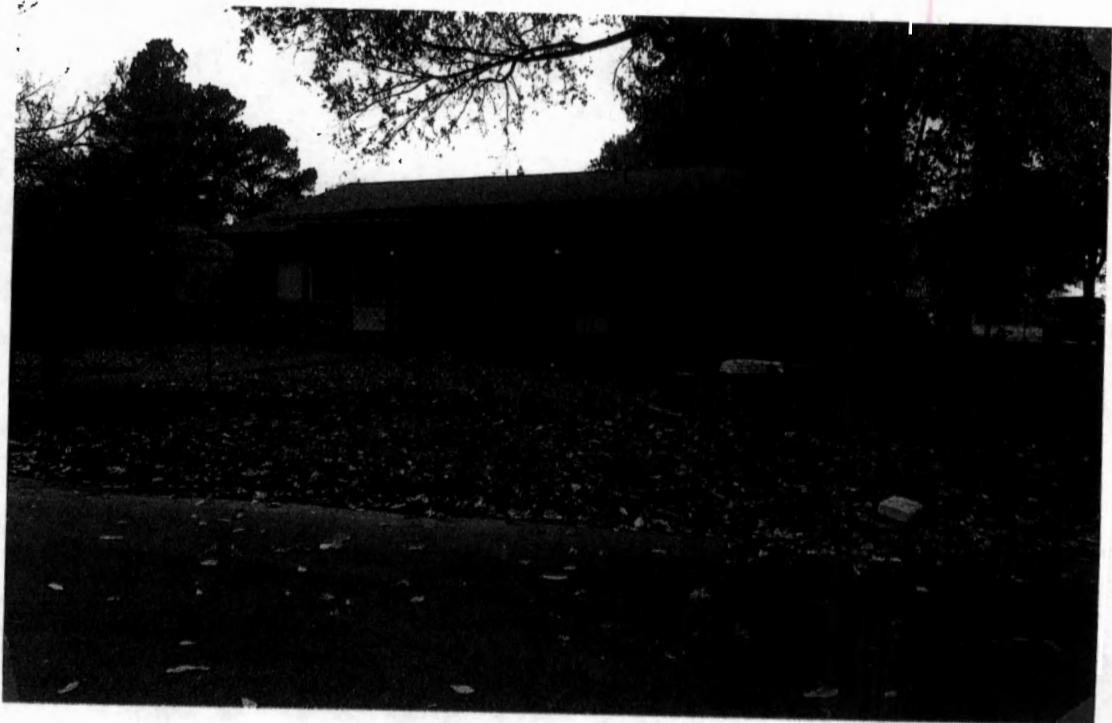
- Williamsburg Apartments
- Cedar Crest

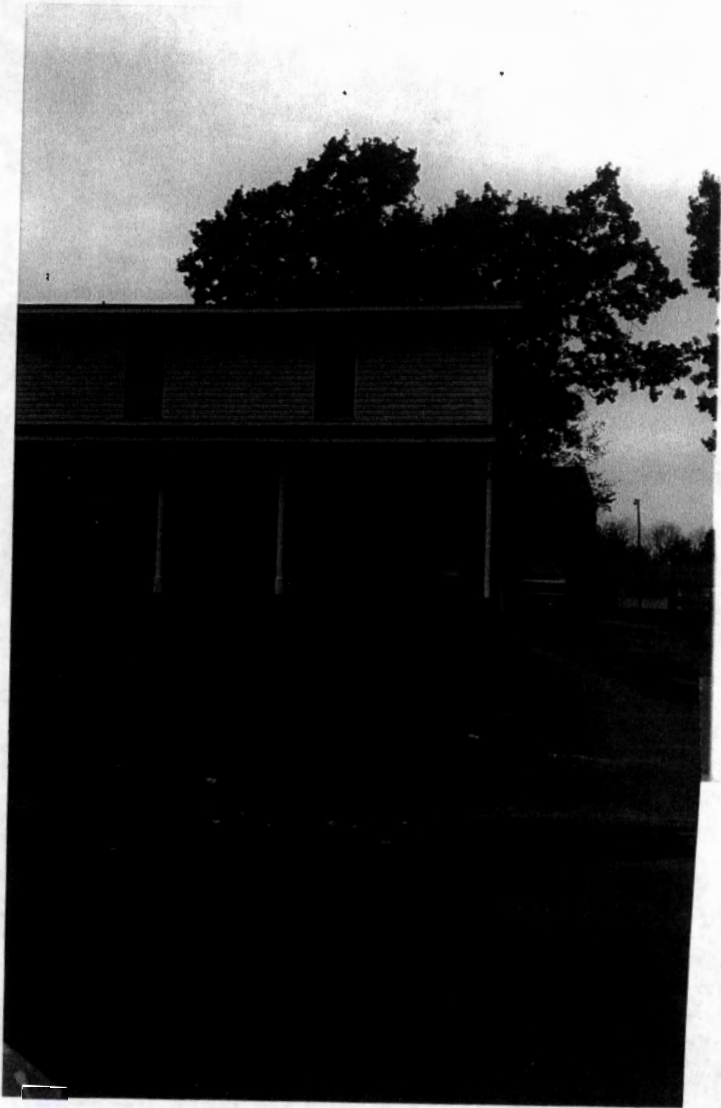
- College Corner
- Apartments - Reesell/Sybil

2020 Cotton Street - Jonesboro

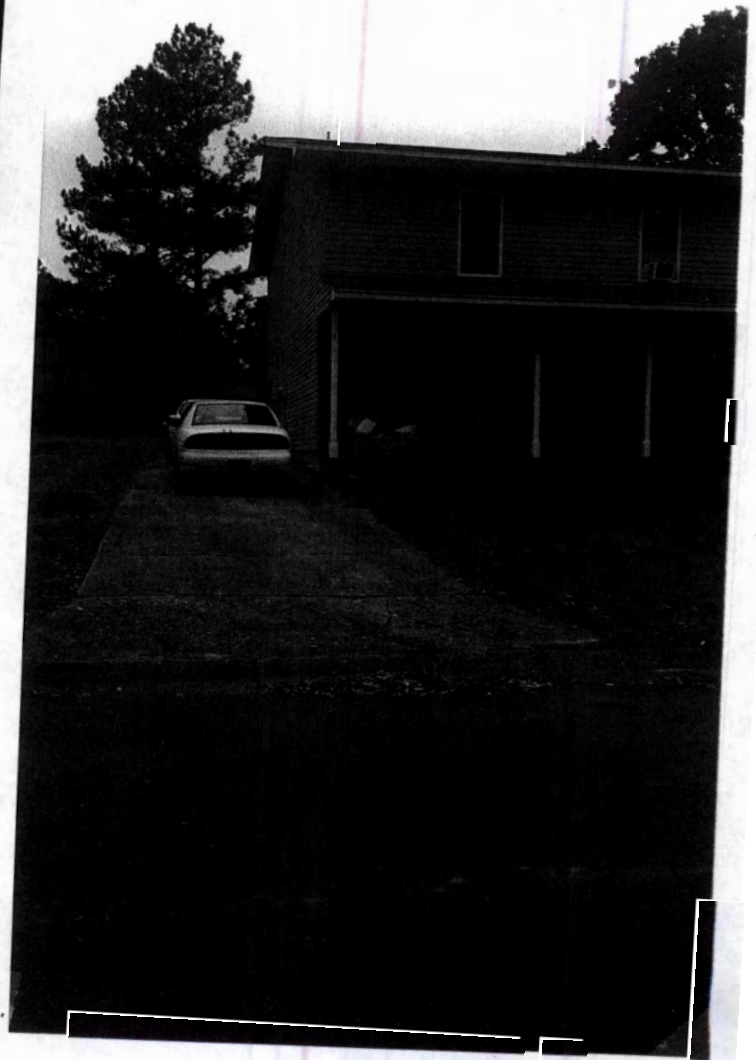


1501 Brazos - Jonesboro

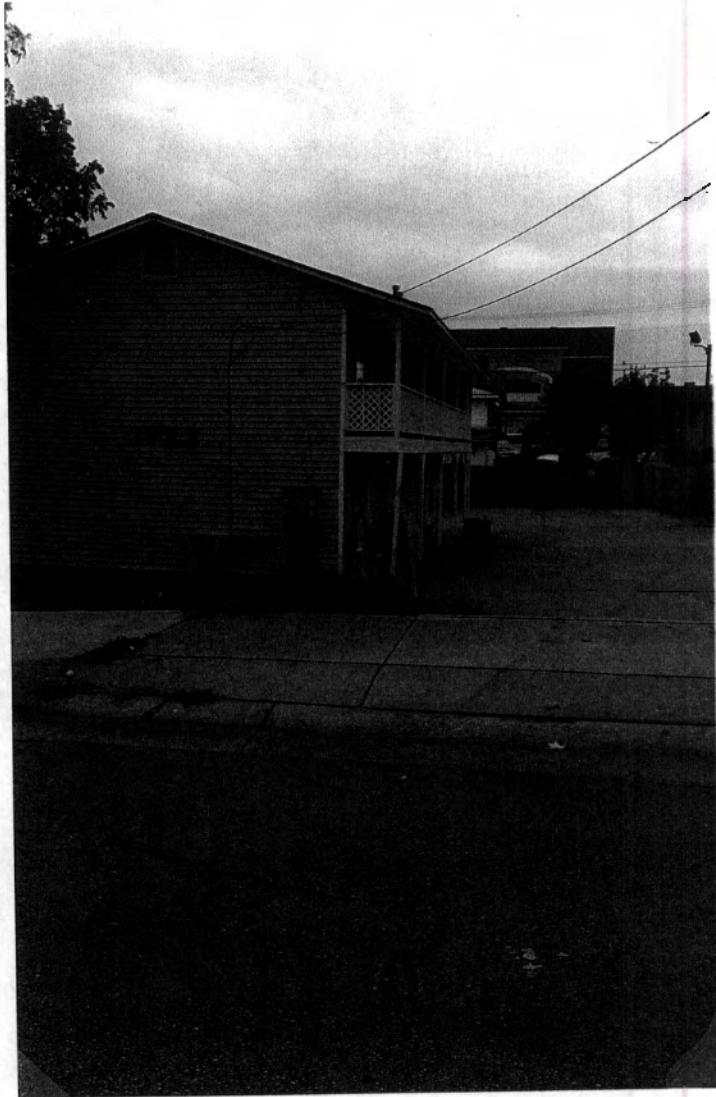




703/707 Strafford
Jonesboro



Property on 1723 South Church Street
owned by K+A Investments LLC



Tax Record Search

Craighead County Personal Property & Real Estate Tax Records



Records Returned: 8

Viewing Records: 1 to 8

Parcel #	Year	Owner	Book	Site Address	Location	Taxpayer Name
✓ <u>01-144271-17001</u>	2016	K & A INVESTMENTS LLC	Delinquent	2020 COTTON ST	SPENCER REPLAT Lot B Block	K & A INVESTMENTS LLC
✓ <u>01-144214-03300</u>	2016	K & A INVESTMENTS LLC	Delinquent	1501 BRAZOS	BELLE MEADE ADD Lot 11 Block B	K & A INVESTMENTS LLC
✓ <u>01-143144-04800</u>	2016	K & A INVESTMENTS LLC	Delinquent	707 STRAFFORD	STRATFORD HEIGHTS 1S... Lot 9 Block	K & A INVESTMENTS LLC
✓ <u>01-143144-04700</u>	2016	K & A INVESTMENTS LLC	Delinquent	703 STRAFFORD	STRATFORD HEIGHTS 1S... Lot 8 Block	K & A INVESTMENTS LLC
<u>01-133034-15300</u>	2016	K & A INVESTMENTS LLC	Delinquent	2242 ADDISON CV	JAMESTOWN MANOR PHAS... Lot 9 Block	K & A INVESTMENTS LLC
<u>01-133034-15100</u>	2016	K & A INVESTMENTS LLC	Delinquent	2234 ADDISON CV	JAMESTOWN MANOR PHAS... Lot 7 Block	K & A INVESTMENTS LLC
<u>01-143341-08300</u>	2015	K & A INVESTMENTS LLC		4315 WELDON LN	34-14-03 BARRINGTON PARK PHAS...	K & A INVESTMENTS LLC
<u>01-133021-30300</u>	2015	K & A INVESTMENTS LLC		5009 ROCKPORT DR	02-13-03 VALLEY VIEW MANOR	K & A INVESTMENTS LLC

✓ - Pictures of site

- Delinquent as of Tuesday, November 14th, 2017
- Taxes due = \$5439.⁸²