



JONESBORO

Quality of Life and Connectivity Plan

RAISE GRANT

The United States Department of Transportation (DOT) announced a grant-funding opportunity through the Rebuilding American Infrastructure with Sustainability and Equity (RAISE) grants. Funds for the FY 2021 RAISE grant program are to be awarded on a competitive basis for surface transportation infrastructure projects that will have a significant local or regional impact.



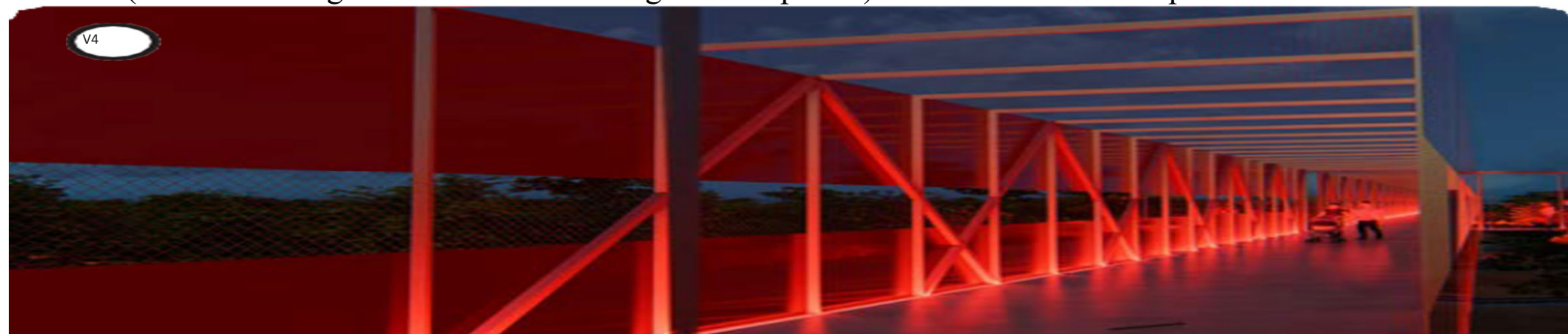
The RAISE grant is needed in communities across the country, because there is tremendous need for transportation projects that create high-quality jobs, improve safety, protect our environment, and generate equitable economic opportunity for all Americans,” said U.S. Secretary of Transportation Pete Buttigieg. “With RAISE grants, we are making those needed investments in our communities' future.”

Projects for RAISE funding will be evaluated based on merit criteria that include safety, environmental sustainability, quality of life, economic competitiveness, state of good repair, innovation, and partnership.

The RAISE grant was known in the past as:

TIGER (Transportation Investment Generating Economic Recovery under President Obama

BUILD (Better Utilizing Investments to Leverage Development) under President Trump



Submitted July 9, 2021
Awarded November 22, 2021



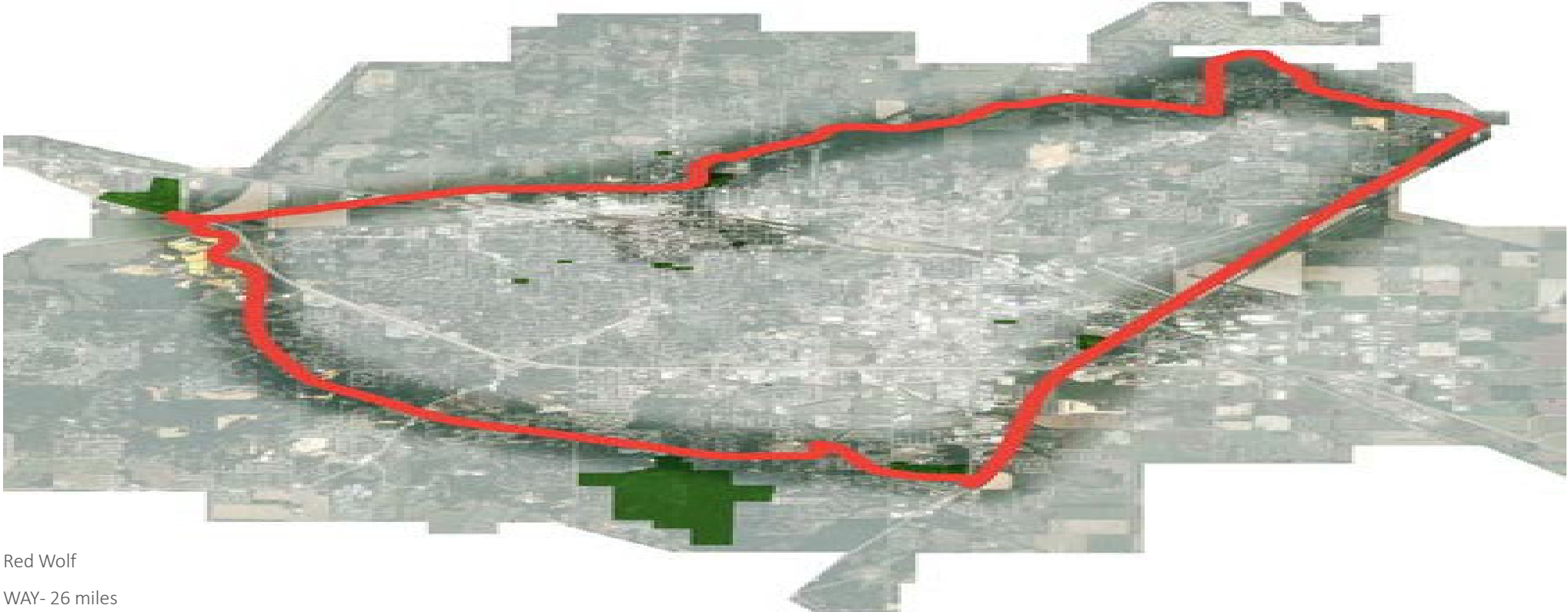
THE RAISE application is asking for funding for 21 miles of a 46.2 mile multi-use trail featuring cutting edge designs with rest areas, maps, emergency connections and hot spots that intertwine through Jonesboro. This Project is broken into phases but with this funding it can become a reality.

It will address current topics such as:

- Economic Competitiveness
- Environmental Sustainability
- State of Good Repair
- Innovative
- Technical Feasibility
- Honor Veterans
- Improving Health



A regional twenty-six mile loop trail, which will utilize existing rail and utility right of ways, is proposed to encircle Jonesboro and transect four main public parks: Northside Park (north), Allen Park (southeast), Craighead Forest Park (south) and Joe Mack Campbell Park (northeast). Gateways at the intersections of the corridors and the regional loop trail occur close to the park systems providing potential entry and exit points with recreational opportunities and parking. **For the purpose of this proposal, priority will be given to the northeast and northwest segments of the trail**, thus connecting key areas such as Joe Mack Campbell Park, Arkansas State University, and Downtown Jonesboro.



Red Wolf
WAY- 26 miles

The first phase and half the second phase of the project have already been funded by the Arkansas Department of Transportation's Transportation Alternatives Program (TAP). The City has been working closely with ARDOT on this project since 2018. The City was awarded funding for the project in FY2018, 2019, and 2020 and will be applying for additional funding in the FY2021 grant cycle. The cumulative total ARDOT TAP grant funds leveraged as of April 2021 is \$1,130,000, with an additional \$370,000 estimated for this year's funding, which brings the total ARDOT contribution to \$1,500,000. The City of Jonesboro's expenses for the program, including the proposed 20% match for this year's ARDOT funding, is \$1,000,000. This includes engineering costs, design fees, and other similar expenditures, as the ARDOT funding has been allocated specifically for construction costs. ARDOT has also covered the cost of environmental review for the project phases that have already been approved.



Phase 3: ASTATE Link (BNSF and UPRR Overpass, Downtown)

This overpass will be a Veterans Wall of Honor. The City of Jonesboro along with the state of Arkansas can never show the appreciation for the United States Veterans. The service they provided has given freedom and safety through out the land. This wall and walkway will be give the opportunity to say acknowledge each one.



Phase 4: ASTATE Link (University Heights to Red Wolf Way Trail)



Phase 5: Joe Mack Line (Downtown to Joe Mack Campbell Park)



Phase 6: Red Wolf Way (Hilltop to Prospect Road)



Phase 7: Red Wolf Way (Northside Park to Hilltop)



Phase 8: Red Wolf Way (Joe Mack to Northside Park)



FUNDING

1. State of Arkansas
2. Federal Fund
3. Private Donors
4. Foundations
5. Private Grants
6. Sponsorships

SUSTAINABILITY

1. Mowing and Weeding City Employees
2. Sponsorship for areas of trail

