

DEVELOPMENT PLAN

MAGIC TOUCH APARTMENTS

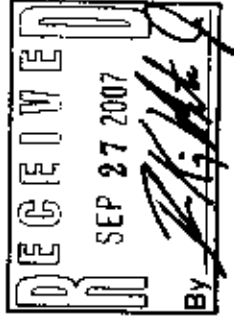
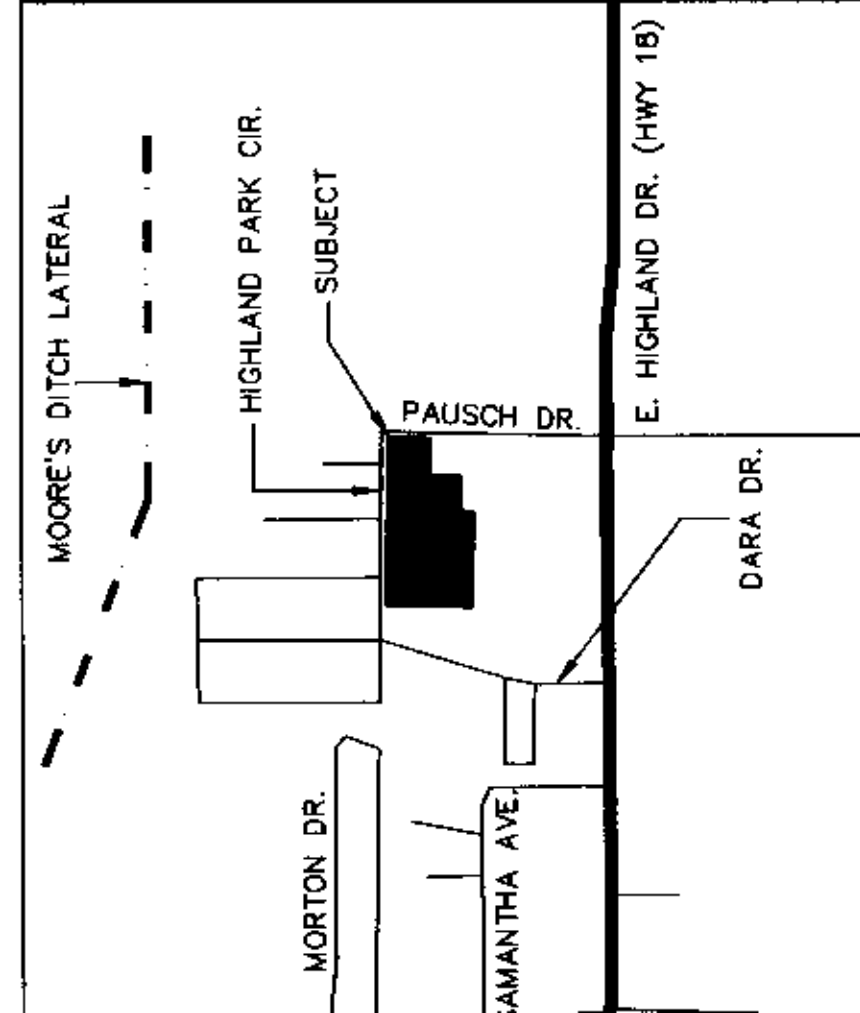
JOB #5555

JONESBORO, CRAIGHEAD COUNTY, ARKANSAS

SEPTEMBER 2007

INDEX TO SHEETS

- 1 OF 10 TITLE SHEET / INDEX
- 2 OF 10 GENERAL PLAN
- 3 OF 10 DETENTION AREA
- 4 OF 10 PLAN / PROFILE DETENTION AREA
- 5 OF 10 TEMPORARY EROSION CONTROL
- 6 OF 10 PHASE 1 - SITE DEVELOPMENT PLAN
- 7 OF 10 PHASE 2 - SITE DEVELOPMENT PLAN
- 8 OF 10 PHASE 3 - SITE DEVELOPMENT PLAN
- 9 OF 10 DETAILS
- 10 OF 10 DETAILS



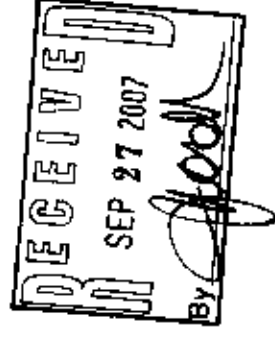
CITY OF JONESBORO
Jonesboro, AR

PRELIMINARY
 FINAL
 AS NOTED
 SITE PLAN

SP 07-23Z

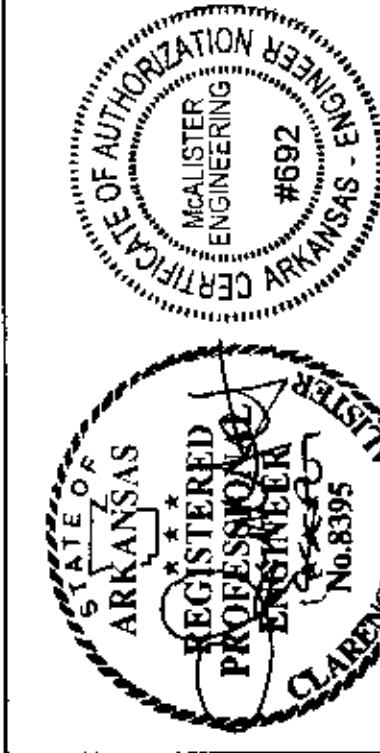
PLANNING ENGINEERING

10/11/07 DATE



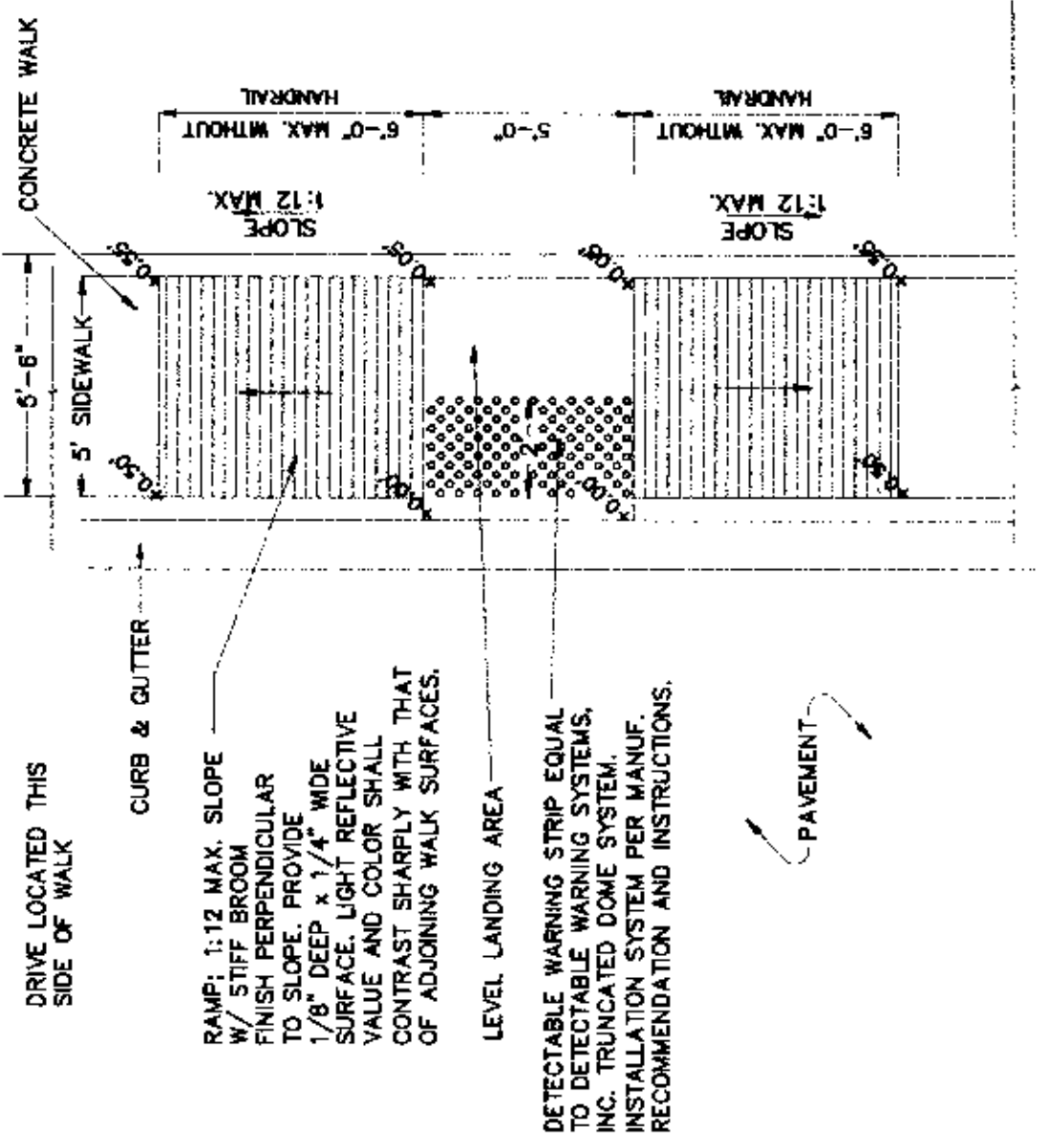
DEVELOPMENT PLAN

JOB# 5555
MAGIC TOUCH APARTMENTS
JONESBORO, ARKANSAS



BEFORE CONSTRUCTION BEGINS
GIVE 48 HOURS NOTICE
FOR UNDERGROUND UTILITY LOCATIONS
CALL: THE ARKANSAS DIAL SYSTEM 1-800-482-8998

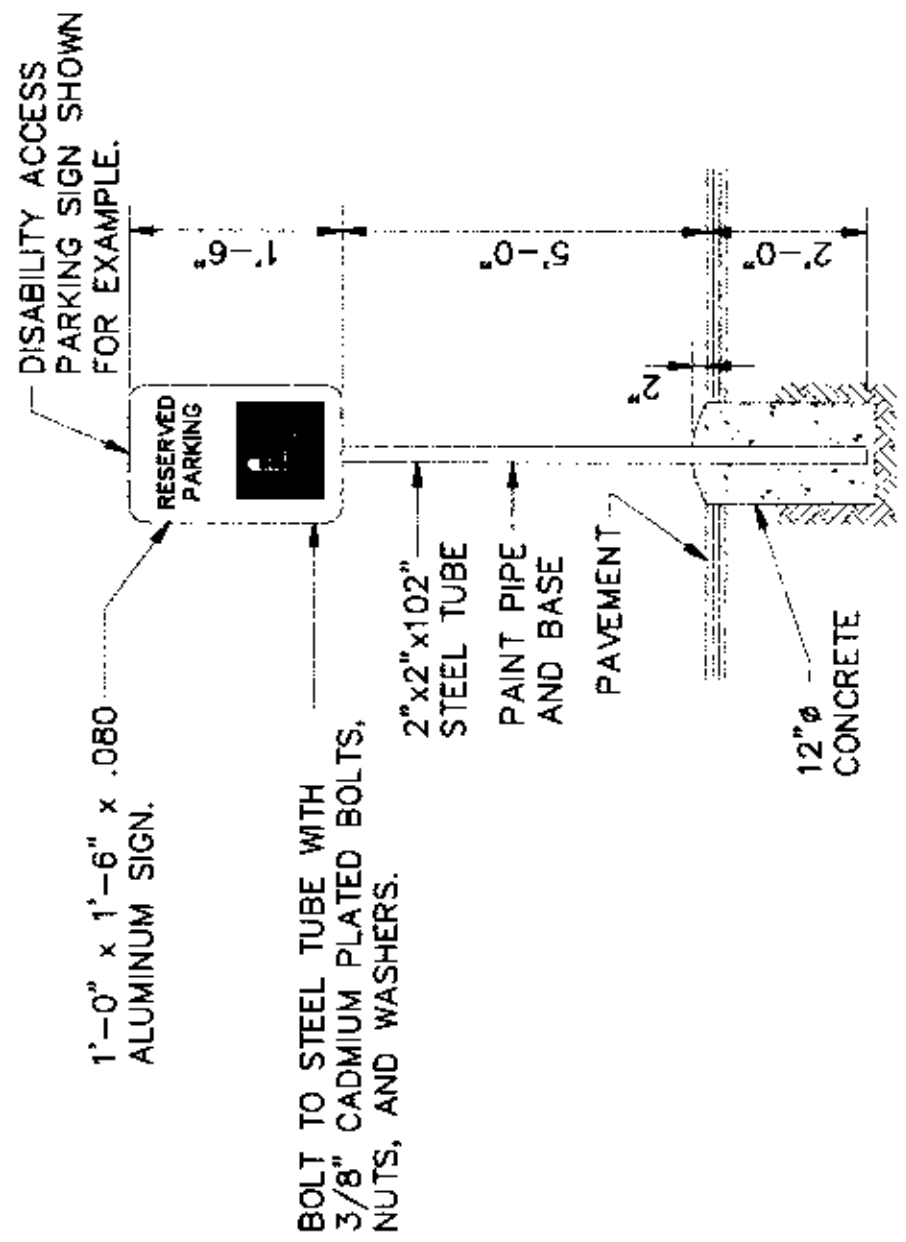
DRAWN BY: JH CHECKED BY: CM
SCALE:
DATE: 05SEP07 CAD FILE: 0728201.dwg



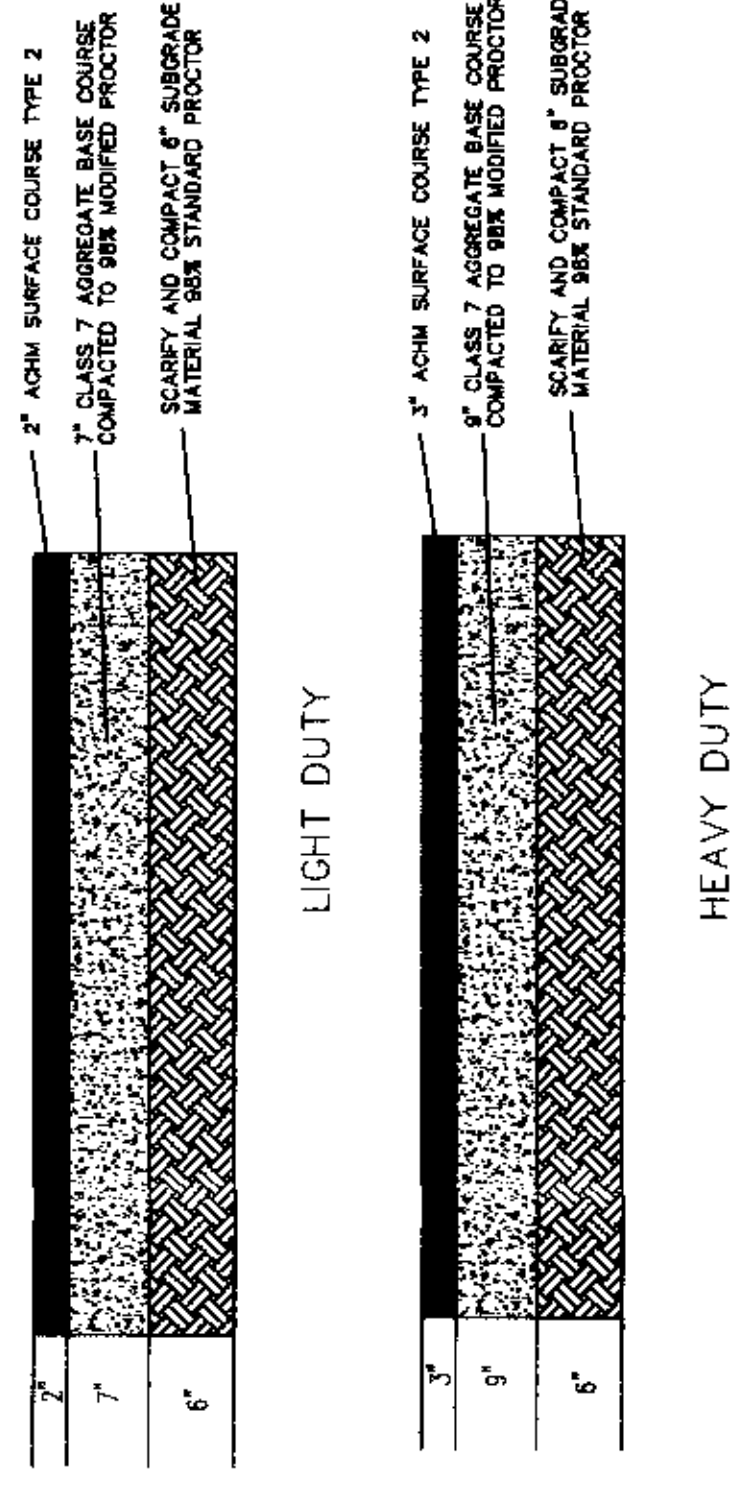
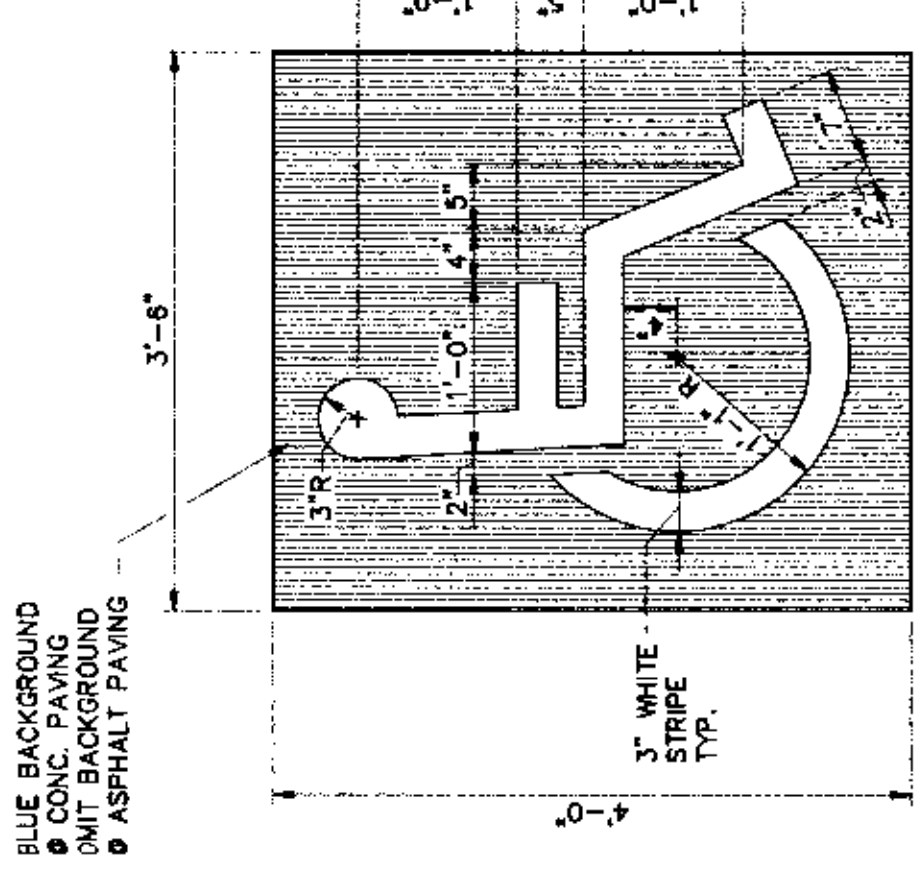
RAMP DETAIL
N.T.S. AT WALK

SIGN DETAIL
N.T.S.

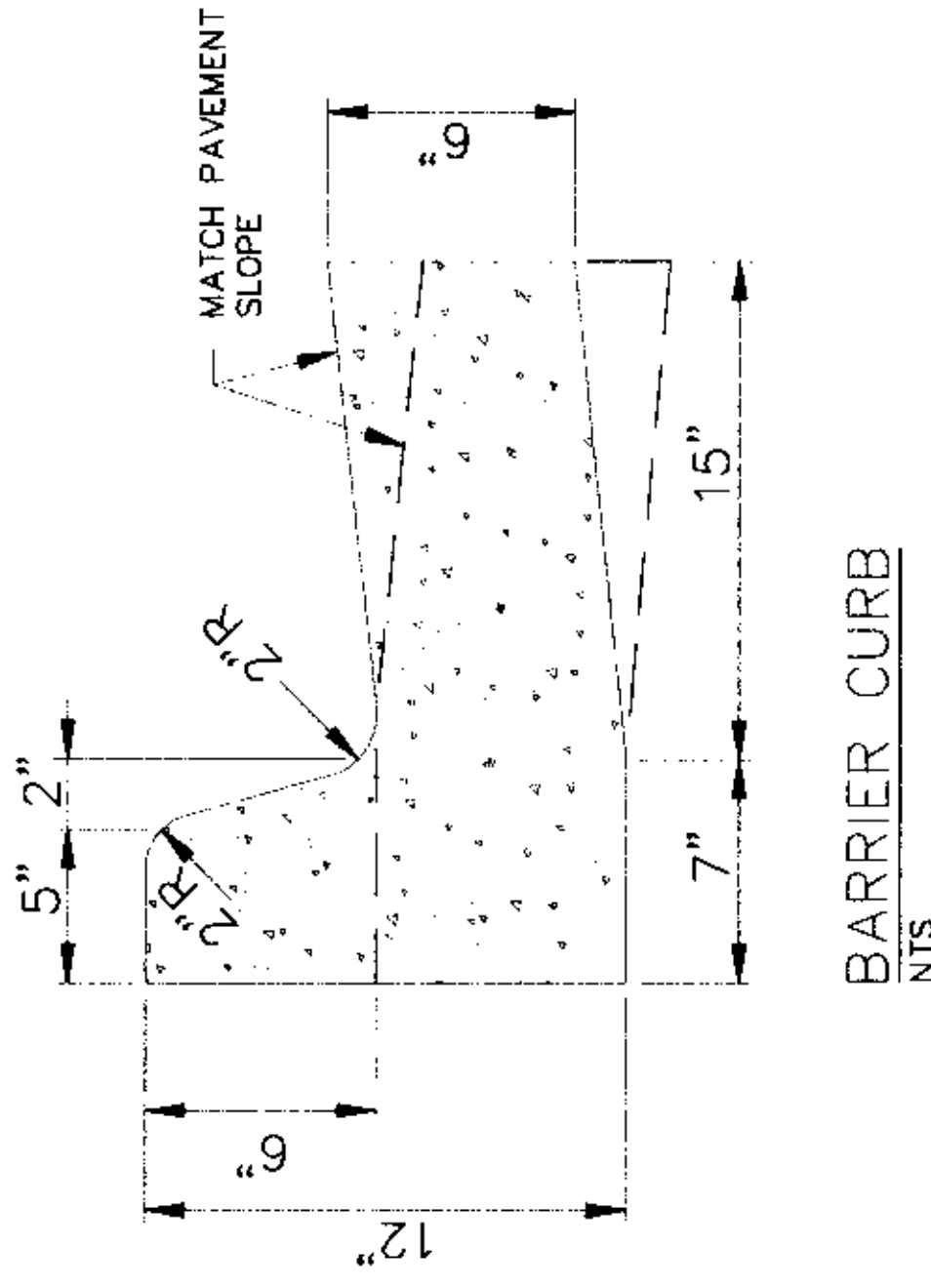
NOTE:
ALL SIGNS SHALL CONFORM TO MUTCD AND SHALL BE HIGH INTENSITY.



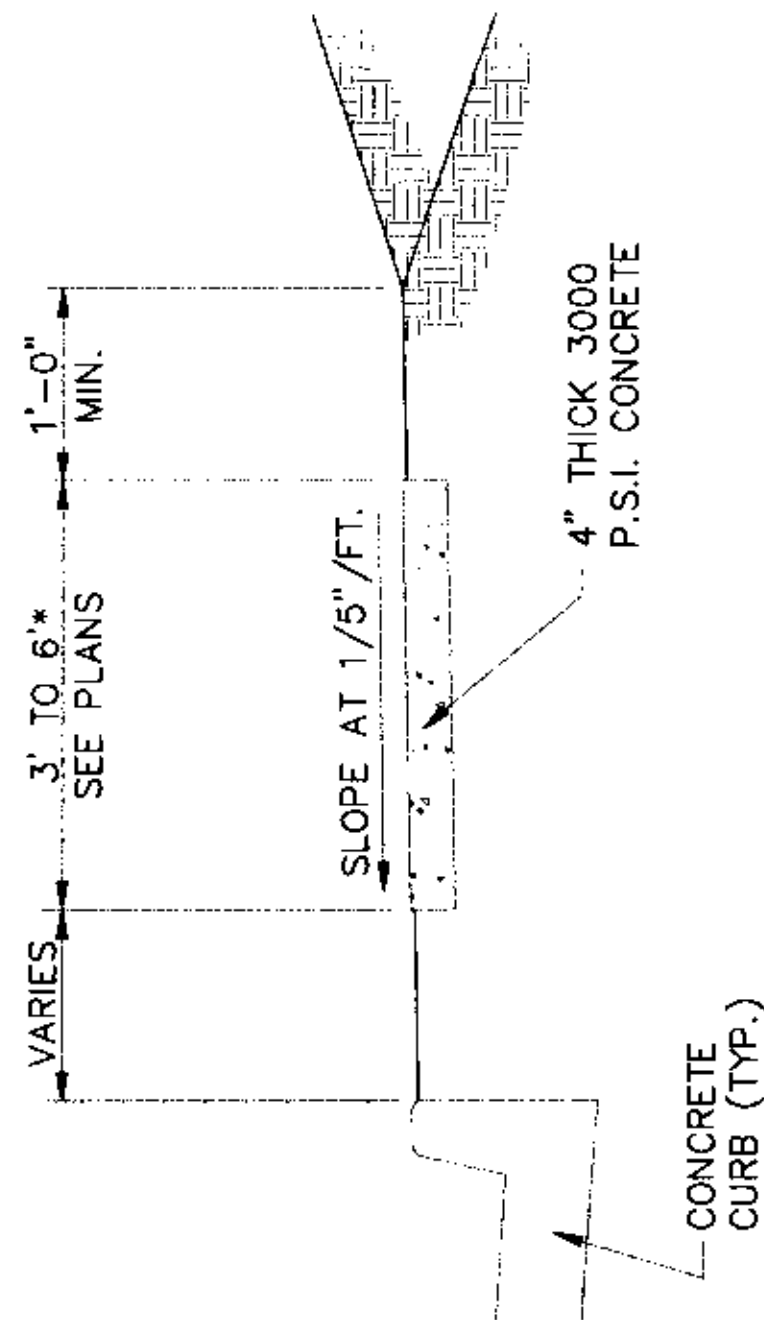
PARKING STALL SYMBOL
1" = 1'-0"



SECTION - ASPHALT DRIVE/PARKING
N.T.S.

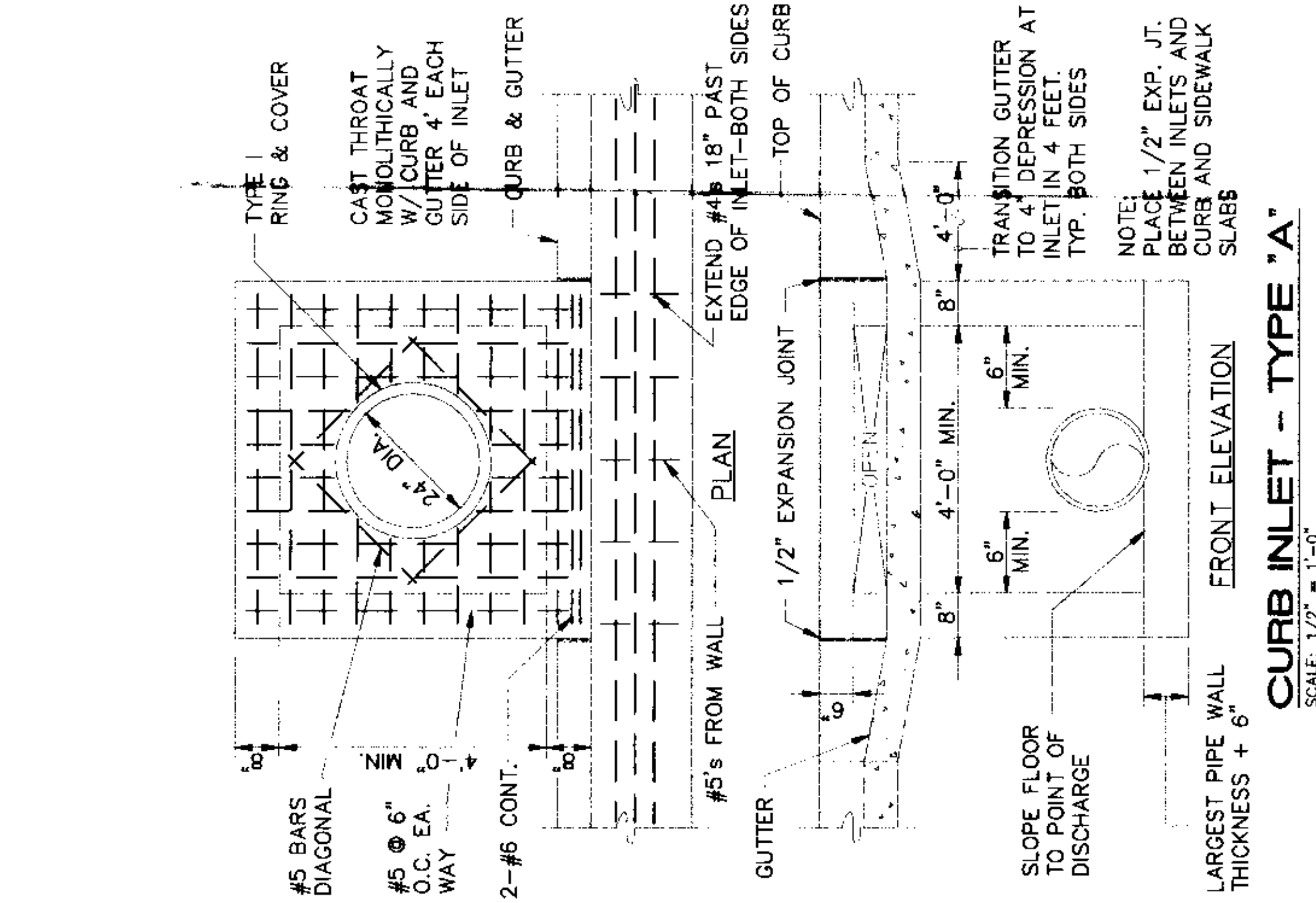


BARRIER CURB
N.T.S.

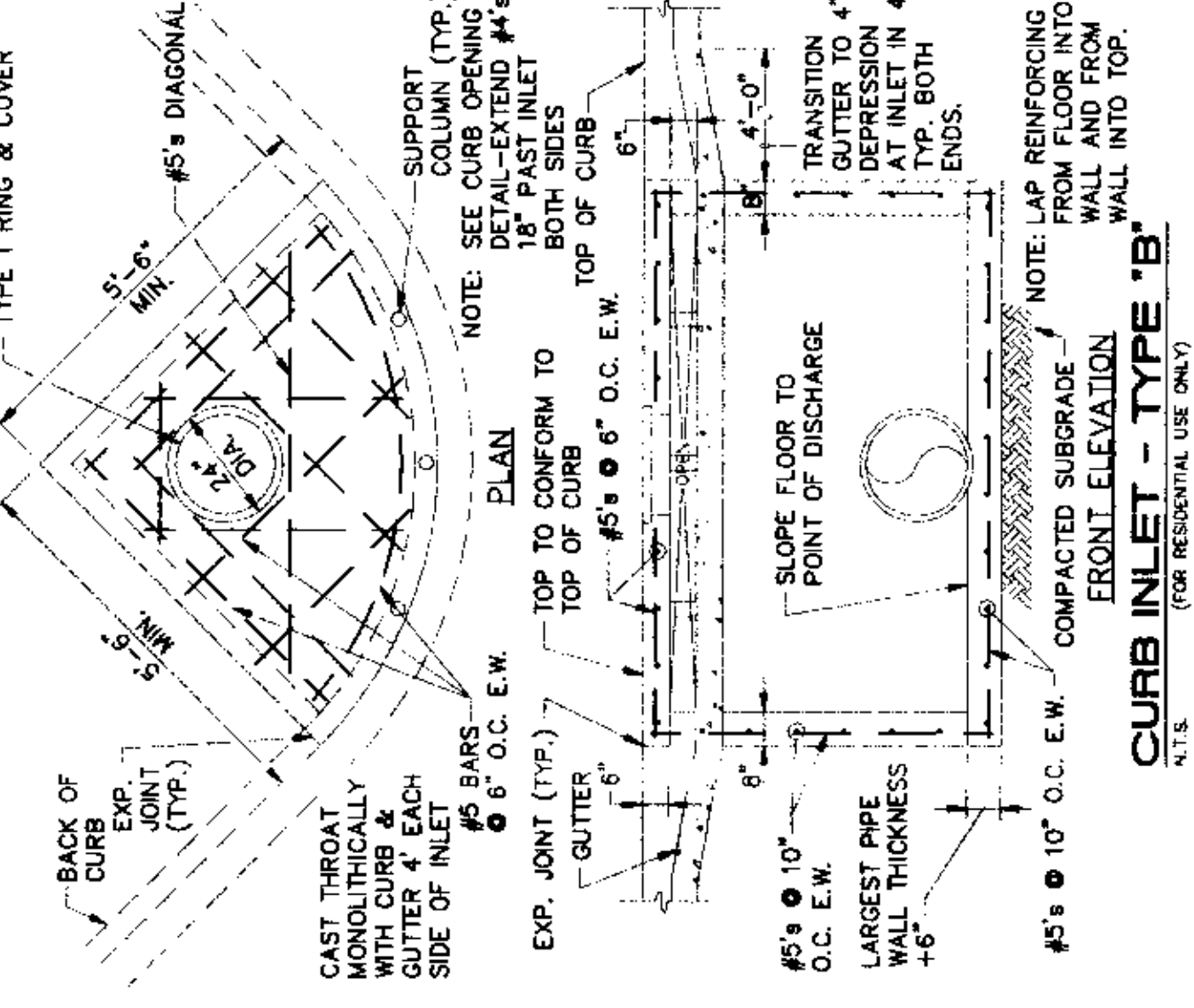


TYPICAL SECTION - SIDEWALK
N.T.S.

* PLACE GROOVE JOINTS ON 12' INTERVAL



CURB INLET - TYPE "A"
SCALE: 1/2" = 1'-0"



CURB INLET - TYPE "B"
NOTE: (FOR RESIDENTIAL USE ONLY)

DETAILS

MAGIC TOUCH APARTMENTS - JOB #5555
JONESBORO, CRAIGHEAD COUNTY, ARKANSAS

MCAULISTER ENGINEERING
CIVIL ENGINEERING AND LAND SURVEYING



DRAWN BY: CM
CHECKED BY: CM
SCALE:
DATE: 04SEP07
CAD FILE: 0728201.DWG
DWG REF: 04E-14N-23

MATCH
SEE SHEET 3/10

MATCH
SEE SHEET 3/10

GRAPHIC SCALE
(IN FEET)
1 INCH = 30 FT

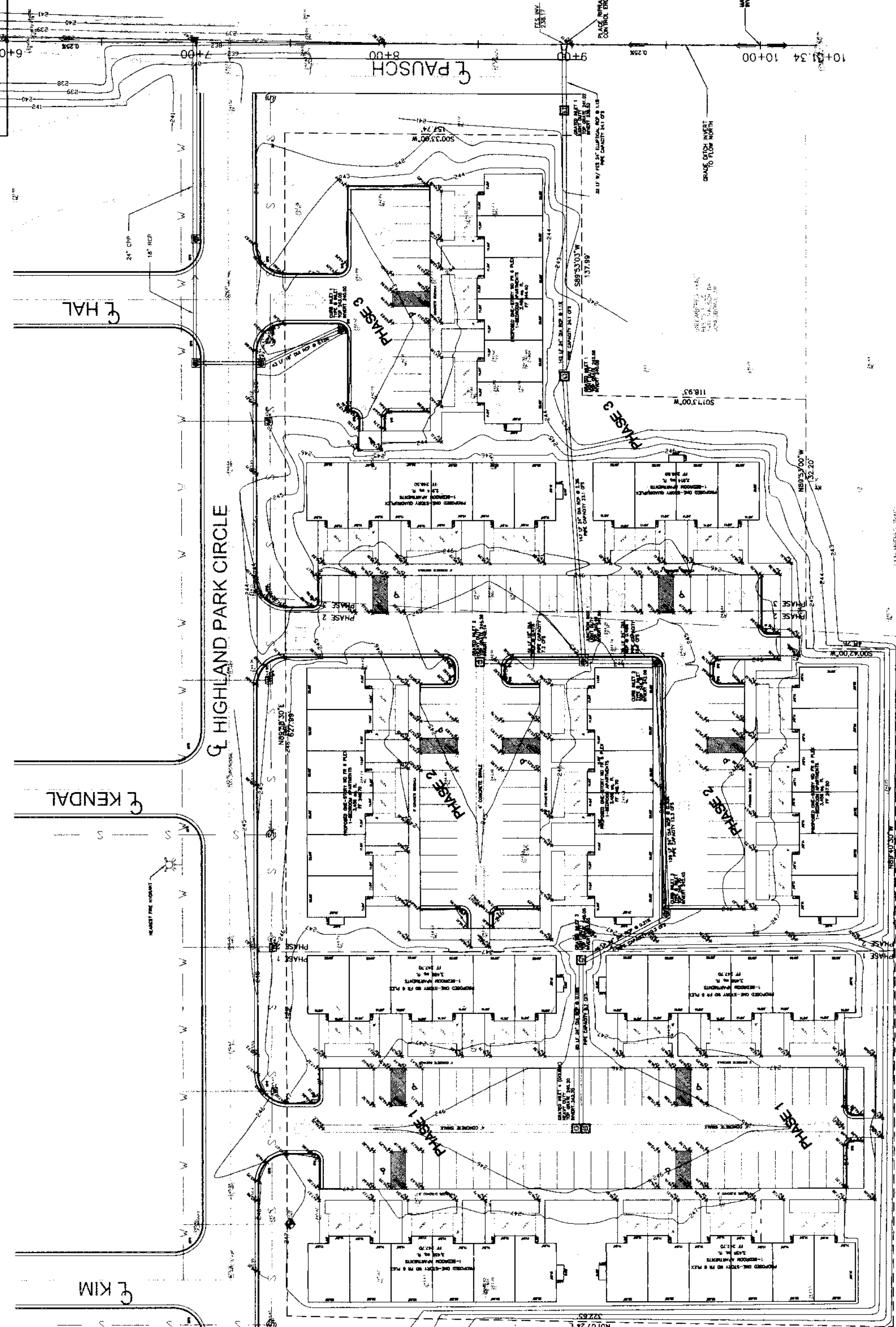
- FOUND IRON PIN
- EXISTING SPOT ELEVATION
- EXISTING GRADE CONTOURS
- FINISH GRADE CONTOURS
- BENCHMARK DATA
- BM HUB AND TACK - WOODEN HUB WITH TACK NEAR NE CORNER LOT 1
- BM PAINT DOT - PAINT DOT ON BACK OF CURB EASTERLY SIDE OF HAL ST.
- FLOWLINE CONSTRUCTED SWALE W/ FLOW DIRECTION
- FINISHED GRADE ELEVATION
- 10% PARALLEL
- TOP OF SIDEWALK
- TOP OF CURB
- SANITARY SEWER MANHOLE
- WATER METER
- ZONING SETBACK
- FENCE

DESCRIPTION

LOT 1 OF THE REPLAT OF LOT 2 AND PART OF LOT 3 IN BLOCK "A" HIGHLAND PARK SUBDIVISION SECOND ADDITION (HIGHLAND SUBDIVISION PHASE II, C 119) AS SHOWN BY THE PLAT RECORDED IN PLAT CABINET C AT PAGE 175 IN THE OFFICE OF THE CIRCUIT CLERK FOR CRAIGHEAD COUNTY IN JONESBORO, ARKANSAS. PHYSICAL SUBJECT ADDRESS: 5309 & 5311 HIGHLAND PARK CIRCLE, JONESBORO, AR 72401.

NOTES

1. PROPERTY LOCATED IN FLOOD ZONE AS SHOWN BY FLOOD INSURANCE RATE MAP FOR CRAIGHEAD COUNTY, ARKANSAS AND INCORPORATED AREAS, COMMUNITY - JONESBORO, CITY OF, NUMBER 550048, PANEL 151, SURFEX C, EFFECTIVE DATE, SEPTEMBER 27, 1981.
2. (ADA COMPLIANCE) ACCESSIBLE PARKING AND ROUTE MAXIMUM SLOPES - CROSS-SLOPES 1:50 (2%), ACCESSIBLE ROUTE 1:20 (5%); RAMP SLOPES 1:12 (17.1%)
3. PARKING CALC PER SCHED A; RESIDENTIAL USES; MULTI-FAMILY - 1.75 SPACES PER ONE-BEDROOM UNIT; 58 UNITS X 1.75 SPACES = 102 SPACES REQUIRED; 130 SPACES PROVIDED.
 PHASE 1: 24 UNITS X 1.75 SPACES = 42 SPACES REQUIRED; 58 SPACES PROVIDED.
 PHASE 2: 18 UNITS X 1.75 SPACES = 32 SPACES REQUIRED; 36 SPACES PROVIDED.
 PHASE 3: 16 UNITS X 1.75 SPACES = 28 SPACES REQUIRED; 36 SPACES PROVIDED.
4. NAME, ADDRESS AND TELEPHONE NUMBERS OF ALL OWNERS AND THE APPLICANT; BOB REES, MAGIC TOUCH CORPORATION, 3709 E PARKER ROAD, 870-835-4800
5. NAME, ADDRESS AND TELEPHONE NUMBER OF ALL PROFESSIONAL CONSULTANTS: CIVIL ENGINEER - MCALISTER ENGINEERING AND LAND SURVEYING, 1015 CR 800, JONESBORO, AR 72401, 870-830-3813; ARCHITECT - LITTLE & ASSOCIATES ARCHITECTS, 501 UNION, JONESBORO, AR 72401, 870-830-3813
6. ALL UTILITIES EXIST ON SITE; THE NEAREST FIRE HYDRANT IS AT NW CORNER OF INTERSECTION KENDAL AND HIGHLAND PARK CIRCLE, NORTH RIGHT OF WAY HIGHLAND PARK CIRCLE ACROSS FROM SUBJECT
7. MINIMUM REQUIRED ZONING SETBACKS: RESIDENTIAL 6 (R-6) STREET SETBACK - 20' SIDE SETBACK - 7.5' REAR SETBACK - 20'
8. PLACE CONSTRUCTION ENTRANCE TO PREVENT OFF-SITE TRACKING.
9. PLACE HANDICAPPED PARKING SIGN AT HANDICAPPED SPACES.
10. 8" WATER EXISTING AT THE NORTH RIGHT OF WAY HIGHLAND PARK CIRCLE; SANITARY SEWER EXISTING AT SOUTH RIGHT OF WAY OF HIGHLAND PARK CIRCLE.
11. FIRM REFERENCE MARK: BM24 - FIRM PANEL 132, ELEVATION 245.883 - DISK, STAMPED 8-179-1986 APPROXIMATELY 0.5 FOOT NORTH-EAST OF SOUTHWEST END OF NORTHWEST HEADWALL OF TURN 4-FOOT CONCRETE BOX CULVERT UNDER UNION PACIFIC RAILROAD, IN NORTH QUARTER OF INTERSECTION OF BURLINGTON NORTHERN RAILROAD AND THE UNION PACIFIC RAILROAD, APPROXIMATELY 28 FEET NORTHEAST OF INTERSECTION OF HAL ST AND HIGHLAND PARK CIRCLE. THE UNION PACIFIC RAILROAD, AND APPROXIMATELY 2.5 FEET BELOW LEVEL OF TRACK.



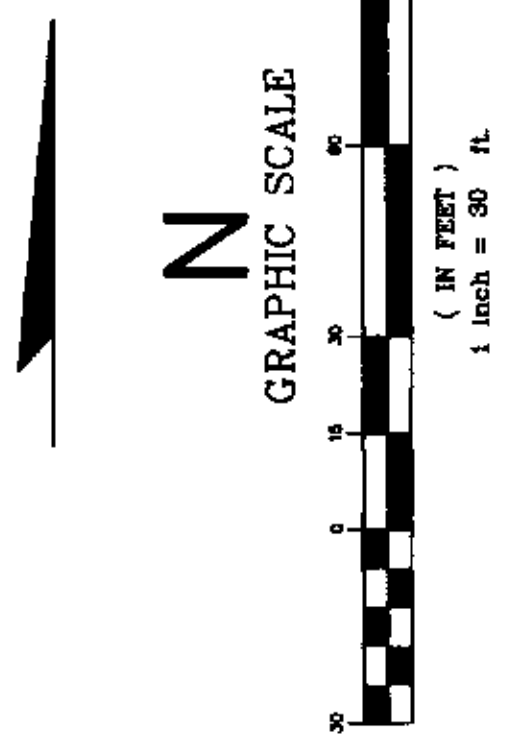
BEFORE CONSTRUCTION BEGINS
GIVE 48 HOURS NOTICE
FOR UNDERGROUND UTILITY LOCATIONS
CALL THE ARKANSAS ONECALL SYSTEM 1-800-482-8998

GENERAL PLAN

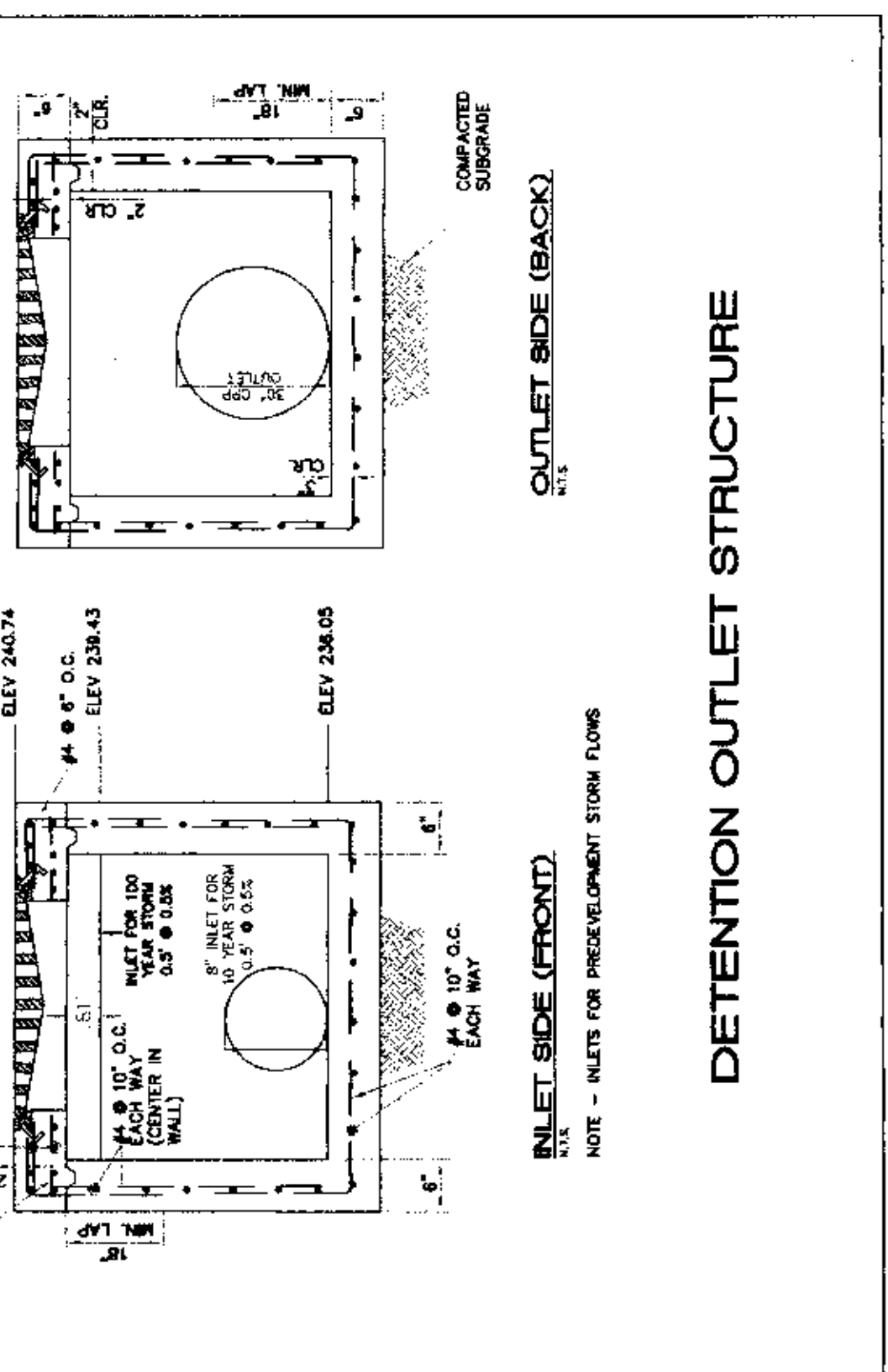
JOB# 5555
MAGIC TOUCH APARTMENTS
JONESBORO, ARKANSAS

MCALISTER ENGINEERING
CIVIL ENGINEERING AND LAND SURVEYING
1015 CR 800, JONESBORO, AR 72401
870-831-1020

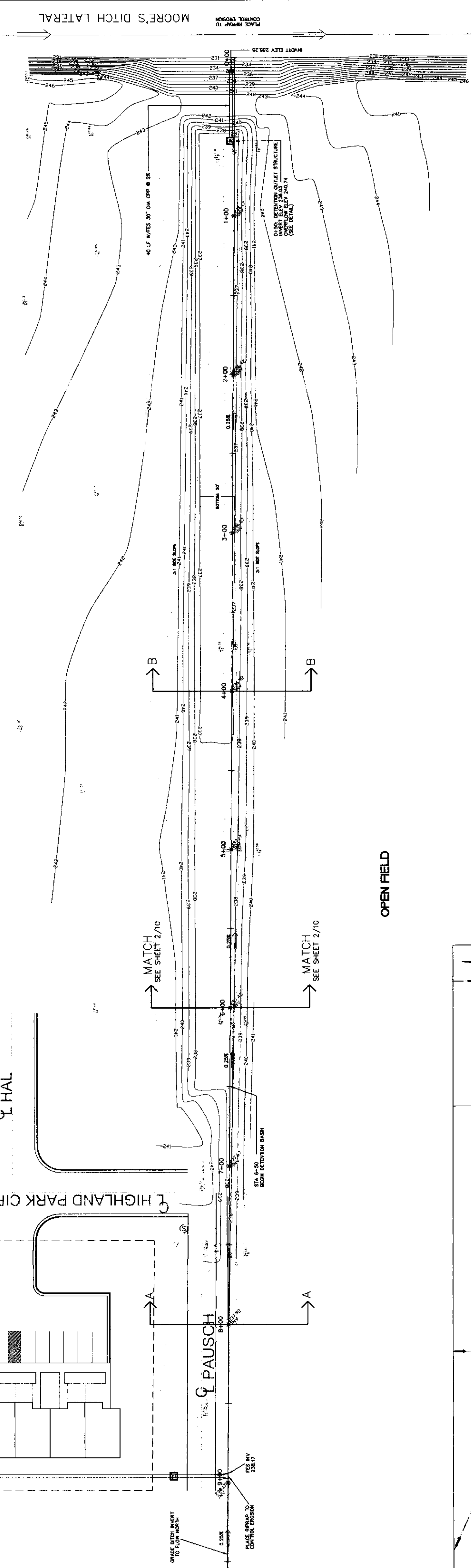
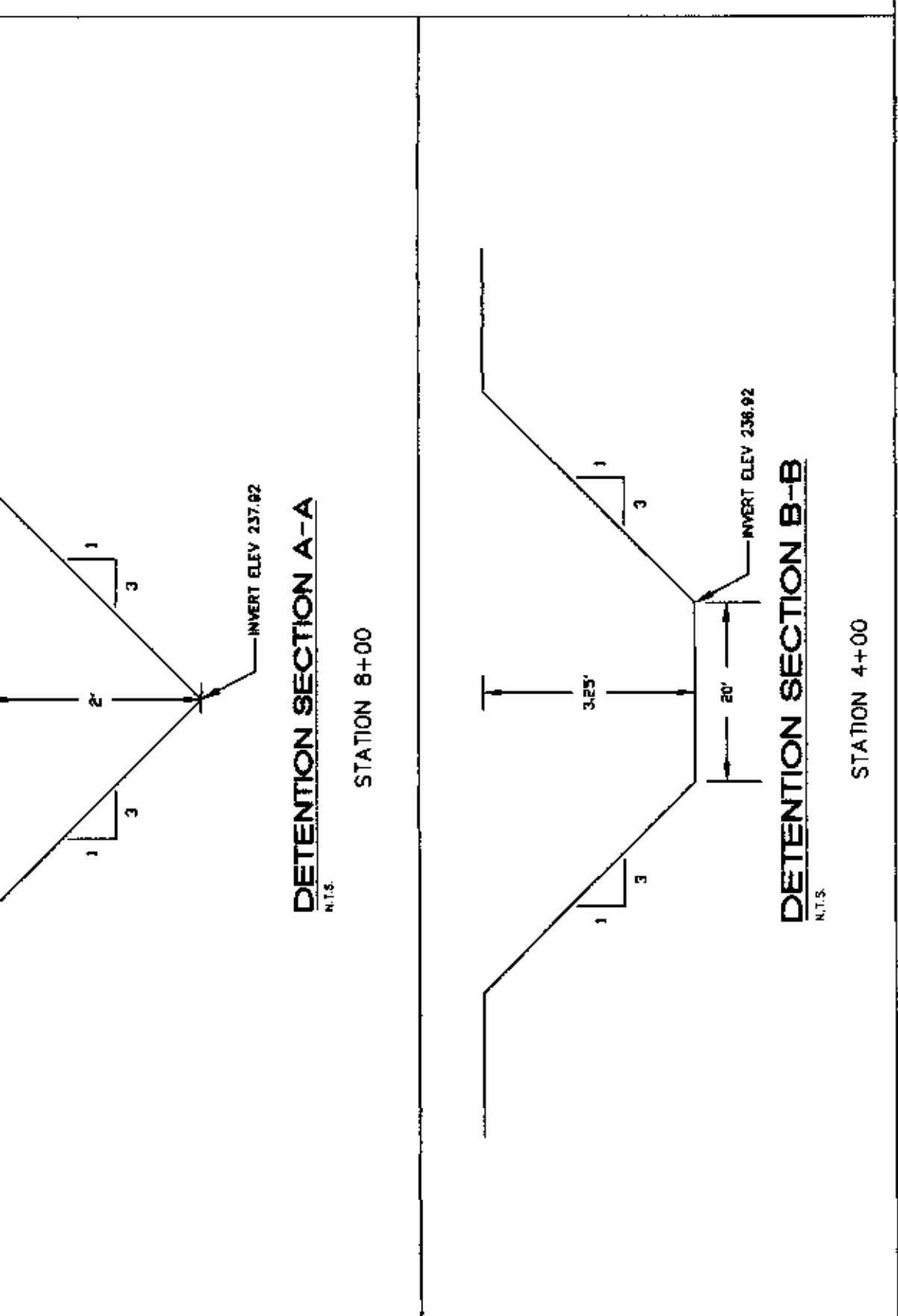
DRAWN BY: JH | CHECKED BY: CM
SCALE: 1" = 30'
DATE: 05SEP07 | CAD FILE: 0728201.dwg



——— EXISTING GRADE CONTOURS
 ——— FINISH GRADE CONTOURS
 +.00' ± EXISTING SPOT ELEVATION
 7.5% ± FINISHED GRADE ELEVATION



DETENTION OUTLET STRUCTURE

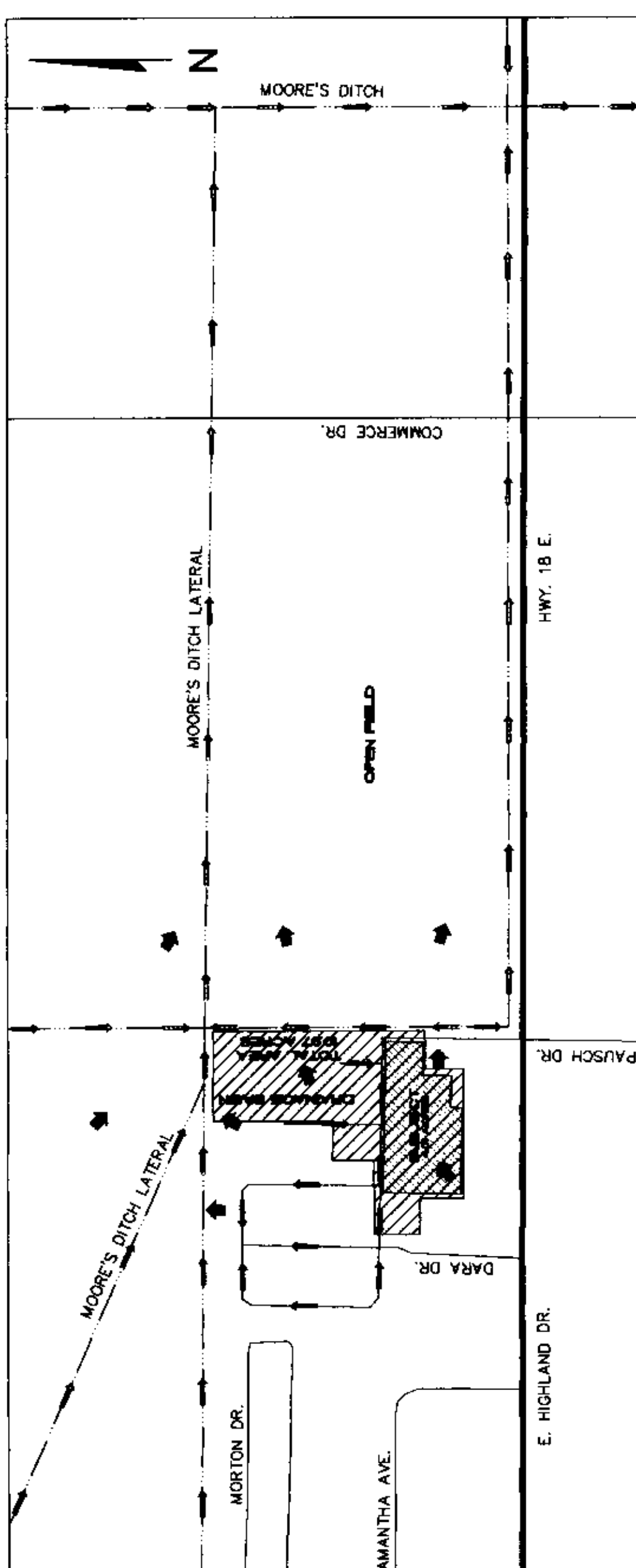


OPEN FIELD



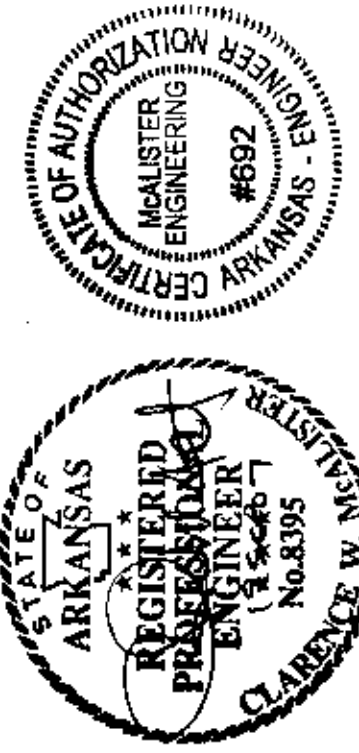
BEFORE CONSTRUCTION BEGINS
 GIVE 48 HOURS NOTICE
 FOR UNDERGROUND UTILITY LOCATIONS
 CALL: THE ARIZONA ONE-CALL SYSTEM 1-800-485-8888

DETENTION AREA

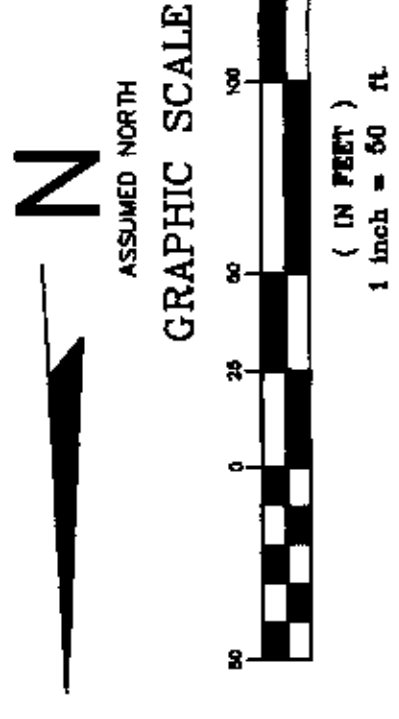


JOB# 5555
MAGIC TOUCH APARTMENTS
 JONESBORO, ARKANSAS

MCALISTER ENGINEERING
 CIVIL ENGINEERING AND LAND SURVEYING
 1015 CR 600, JONESBORO, AR 72404
 870-981-1400



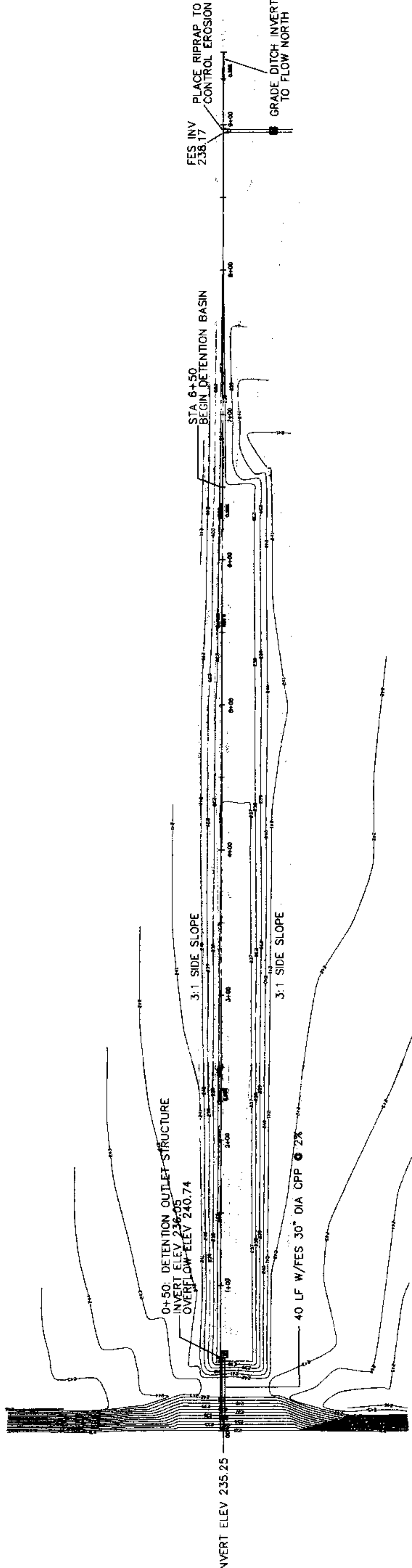
DRAWN BY: JH CHECKED BY: CM
 SCALE: 1" = 30'
 DATE: 05SEP07 CAD FILE: 0728201.dwg
 DWG REF: 4E-14N-23



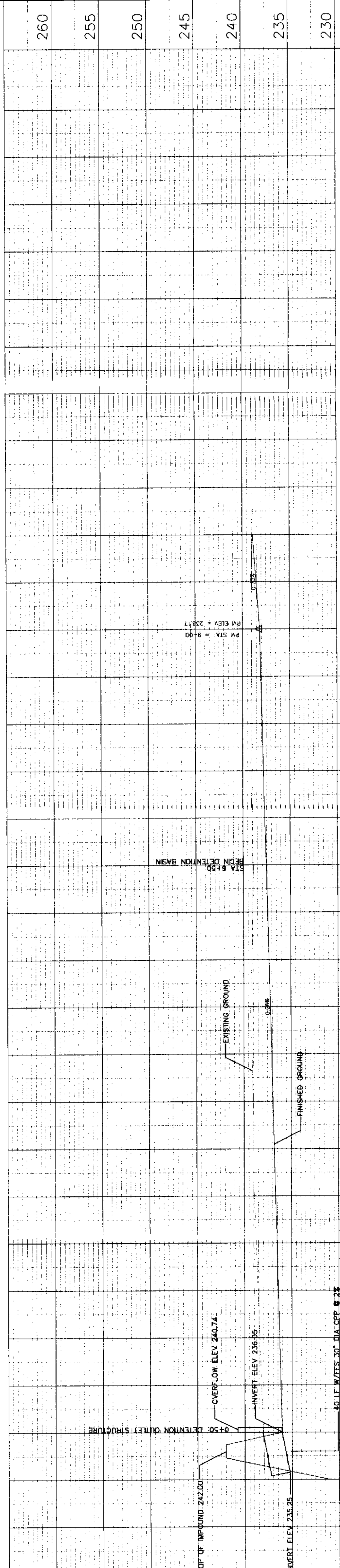
— EXISTING GRADE CONTOURS
 — FINISHED GRADE CONTOURS



BEFORE CONSTRUCTION BEGINS
 GIVE 48 HOURS NOTICE
 FOR UNDERGROUND UTILITY LOCATIONS
 CALL THE ARKANSAS ONE-CALL SYSTEM 1-800-482-9998



PLAN AND PROFILE - MAGIC TOUCH APARTMENTS



JOB# 5555
MAGIC TOUCH APARTMENTS
 JONESBORO, ARKANSAS

STATE OF ARKANSAS
 REGISTERED PROFESSIONAL ENGINEER
 CLARENCE W. MCALISTER, JR.
 No. 5395

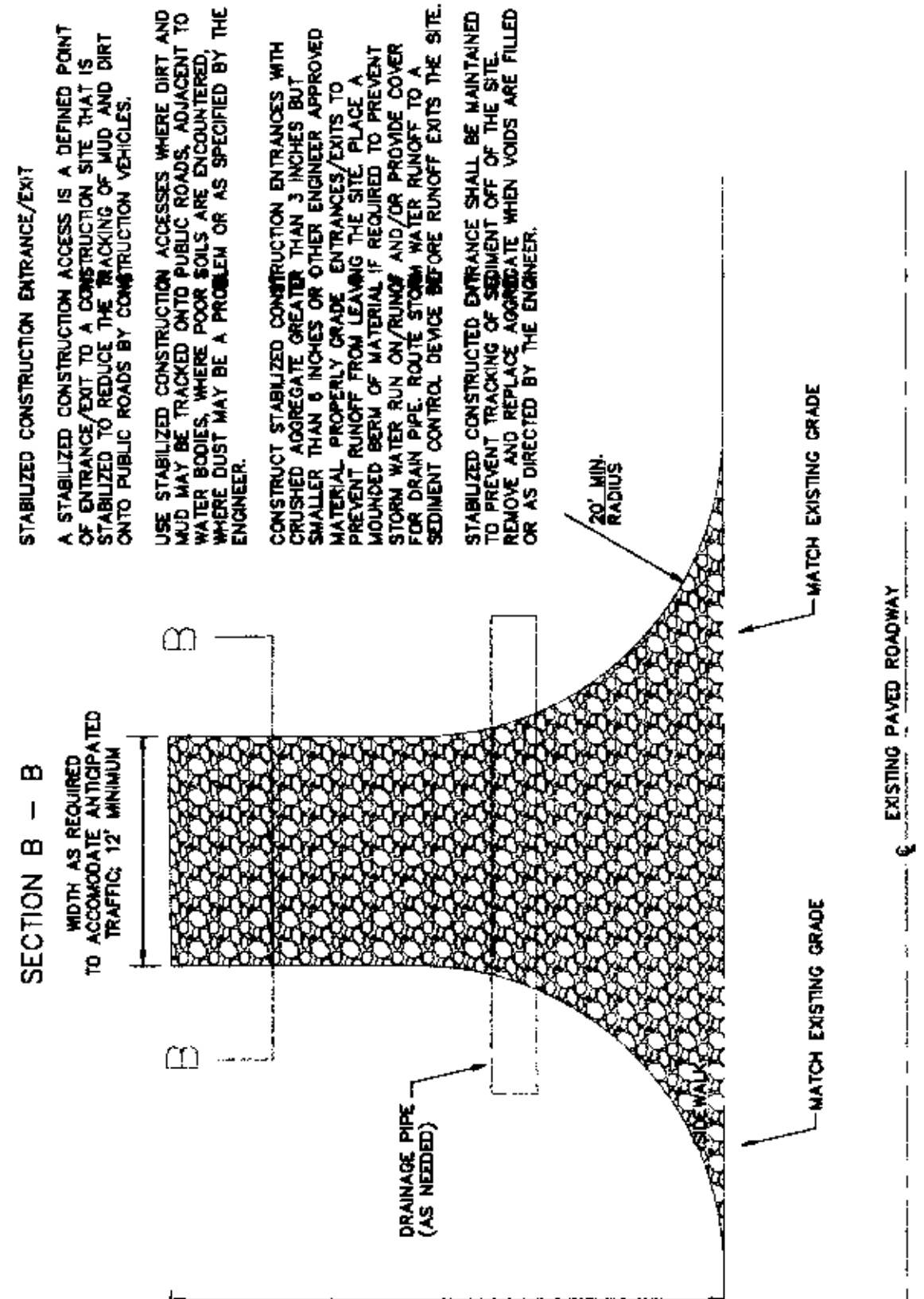
STATE OF ARKANSAS
 CERTIFICATE OF AUTHORIZATION
 MCALISTER ENGINEERING
 #892

DRAWN BY: JH CHECKED BY: CM
 SCALE: 1" = 50'
 DATE: 05SEP07 CAD FILE: 0728201.dwg

MCALISTER ENGINEERING
 CIVIL ENGINEERING AND LAND SURVEYING
 1015 CP 603 JONESBORO, AR 72404
 875-981-403

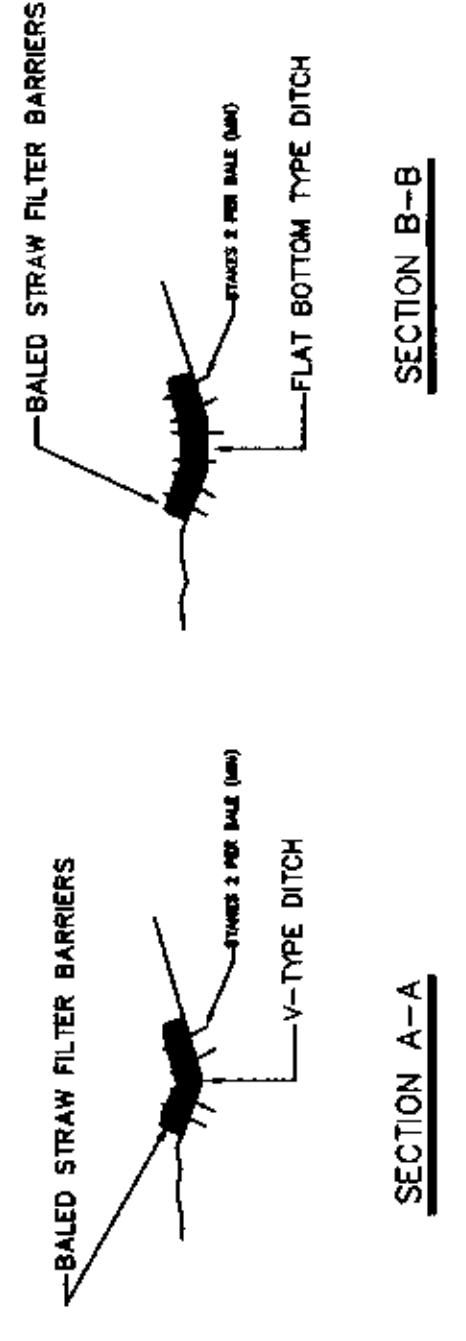
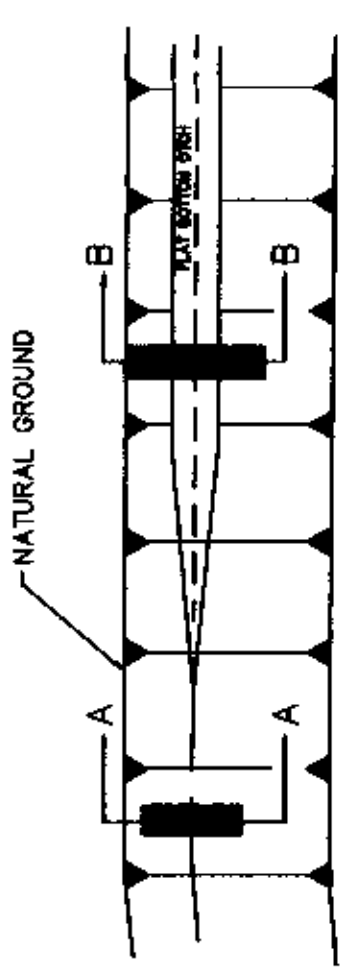
225	220	8+00
		7+00
		6+00
		5+00
		4+00
		3+00
		2+00
		1+00
		0+00

EXISTING GROUND
 12" MIN UNLESS OTHERWISE SPECIFIED BY A SOILS ENGINEER
 GEOTEXTILE
 CURVED AGGREGATE GREATER THAN 3" BUT SMALLER THAN 6"



PLAN
 STABILIZED CONSTRUCTION ENTRANCE/EXIT
AS PER SECTION 112 OF CODE

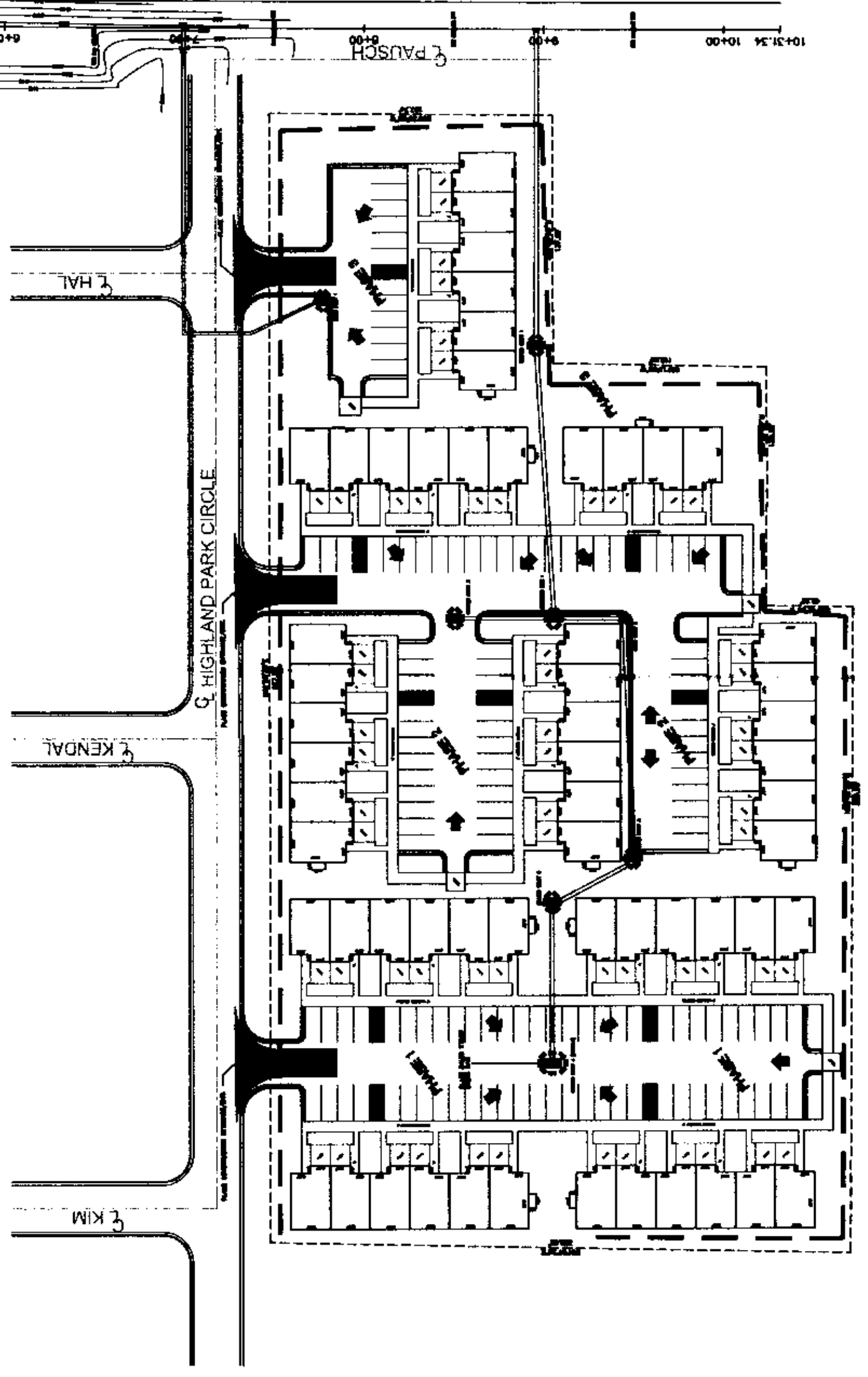
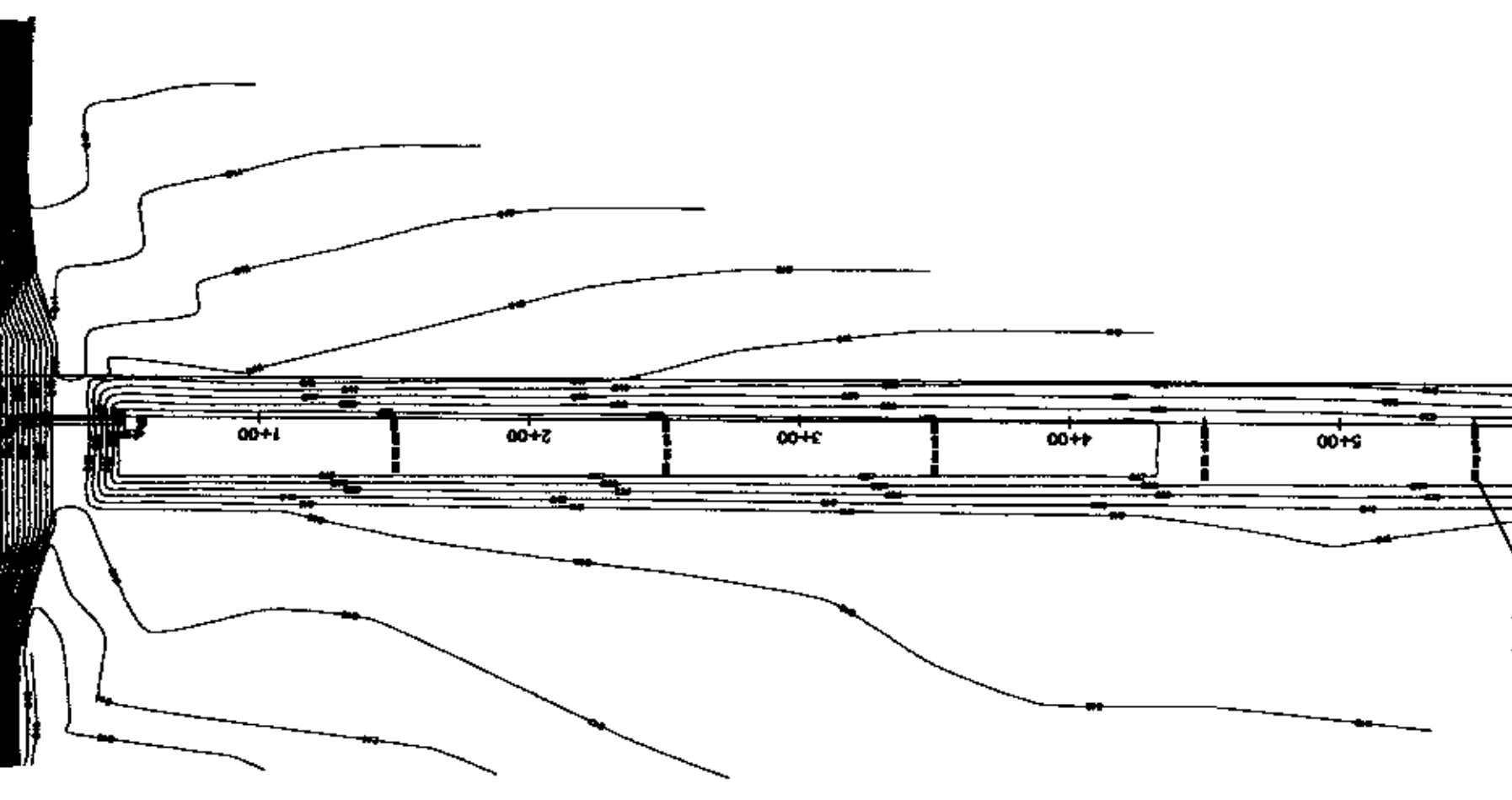
STABILIZED CONSTRUCTION ENTRANCE/EXIT
 A STABILIZED CONSTRUCTION ACCESS IS A DEFINED POINT OF ENTRANCE/EXIT TO A CONSTRUCTION SITE THAT IS STABILIZED TO REDUCE THE TRACKING OF MUD AND DIRT ONTO PUBLIC ROADS BY CONSTRUCTION VEHICLES.
 USE STABILIZED CONSTRUCTION ACCESSES WHERE DIRT AND MUD MAY BE TRACKED ONTO PUBLIC ROADS, ADJACENT TO PUBLIC ROADS, OR WHERE THERE IS A CONCERN THAT MUD OR DIRT TRACKING MAY BE A PROBLEM OR AS SPECIFIED BY THE ENGINEER.
 CONSTRUCT STABILIZED CONSTRUCTION ENTRANCES WITH CRUSHED AGGREGATE GREATER THAN 3 INCHES BUT SMALLER THAN 6 INCHES OR OTHER ENGINEER APPROVED MATERIAL. PROTECT ALL ENTRIES TO THE STABILIZED CONSTRUCTION ACCESS WITH AN AGGREGATE BERM OF MATERIAL IF REQUIRED TO PREVENT STORM WATER RUN ON/RUNOFF AND/OR PROVIDE COVER OR DRAINAGE TO PREVENT STORM WATER RUNOFF FROM THE SITE.
 STABILIZED CONSTRUCTION ENTRANCES SHALL BE MAINTAINED TO PREVENT TRACKING OF MUD AND DIRT ONTO PUBLIC ROADS OR AS DIRECTED BY THE ENGINEER. WHEN VOIDS ARE FILLED



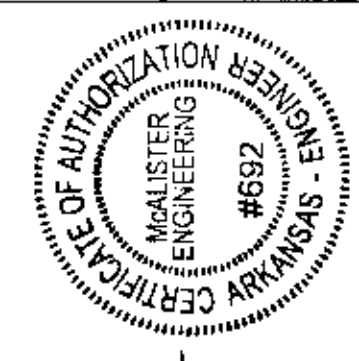
BAILED STRAW CHECK DAMS

1. SEED AND SPRIG ALL GRADED AREAS WITH HARDY GRASS OR OTHER APPROVED LANDSCAPING METHOD TO STABILIZE SOIL.
2. PLACE BAILED STRAW CHECK DAMS AS SHOWN TO CONTROL SEDIMENT.
3. CONSTRUCT ENTRANCE/EXIT TO BE PLACED AT LOCATIONS NECESSARY TO CONTROL TRACKING OF SEDIMENT ON ROADWAYS.

GRAPHIC SCALE
 (IN FEET)
 1 inch = 60 ft.



BEFORE CONSTRUCTION BEGINS
 GIVE 48 HOURS NOTICE
 FOR UNDERGROUND UTILITY LOCATIONS
 CALL THE ARKANSAS ONE-CALL SYSTEM 1-800-482-6998

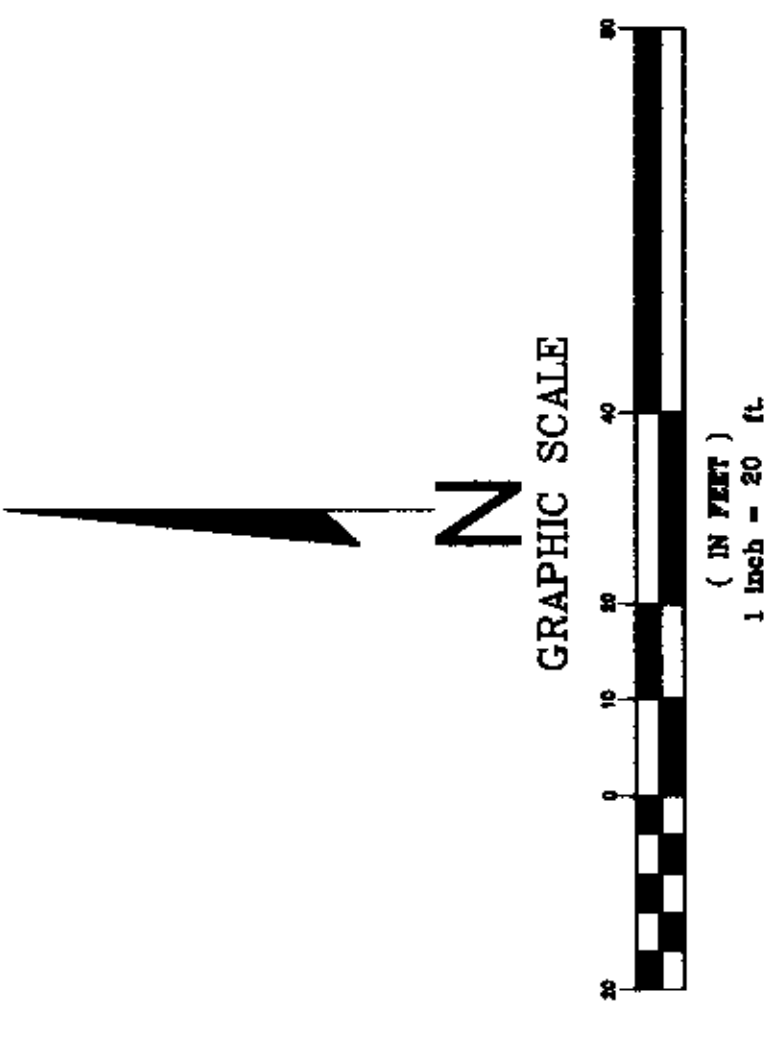


TEMPORARY EROSION CONTROL

JOB# 5555
MAGIC TOUCH APARTMENTS
 JONESBORO, ARKANSAS

MCALISTER ENGINEERING
 CIVIL ENGINEERING AND LAND SURVEYING
 1045 CR 205, JONESBORO, AR 72404
 870-931-1200

DRAWN BY: JH CHECKED BY: CM
 SCALE: 1" = 60'
 DATE: 05SEP07 CAD FILE: 0728201.dwg
 DWG: 955 4E-14N-23



- FOUND IRON PIN
- EXISTING SPOT ELEVATION
- EXISTING GRADE CONTOURS
- FINISH GRADE CONTOURS
- BENCHMARK DATA
BM HUB AND TACK - WOODEN HUB WITH TACK
NEAR NE CORNER LOT 1
- FLOWLINE CONSTRUCTED SWALE w/ FLOW DIRECTION
- FINISHED GRADE ELEVATION
- INVERT SWALE
- TOP PAVEMENT
- TOP OF SIDEWALK
- TOP OF CURB
- SANITARY SEWER MANHOLE
- WATER METER
- ZONING SETBACK
- FENCE



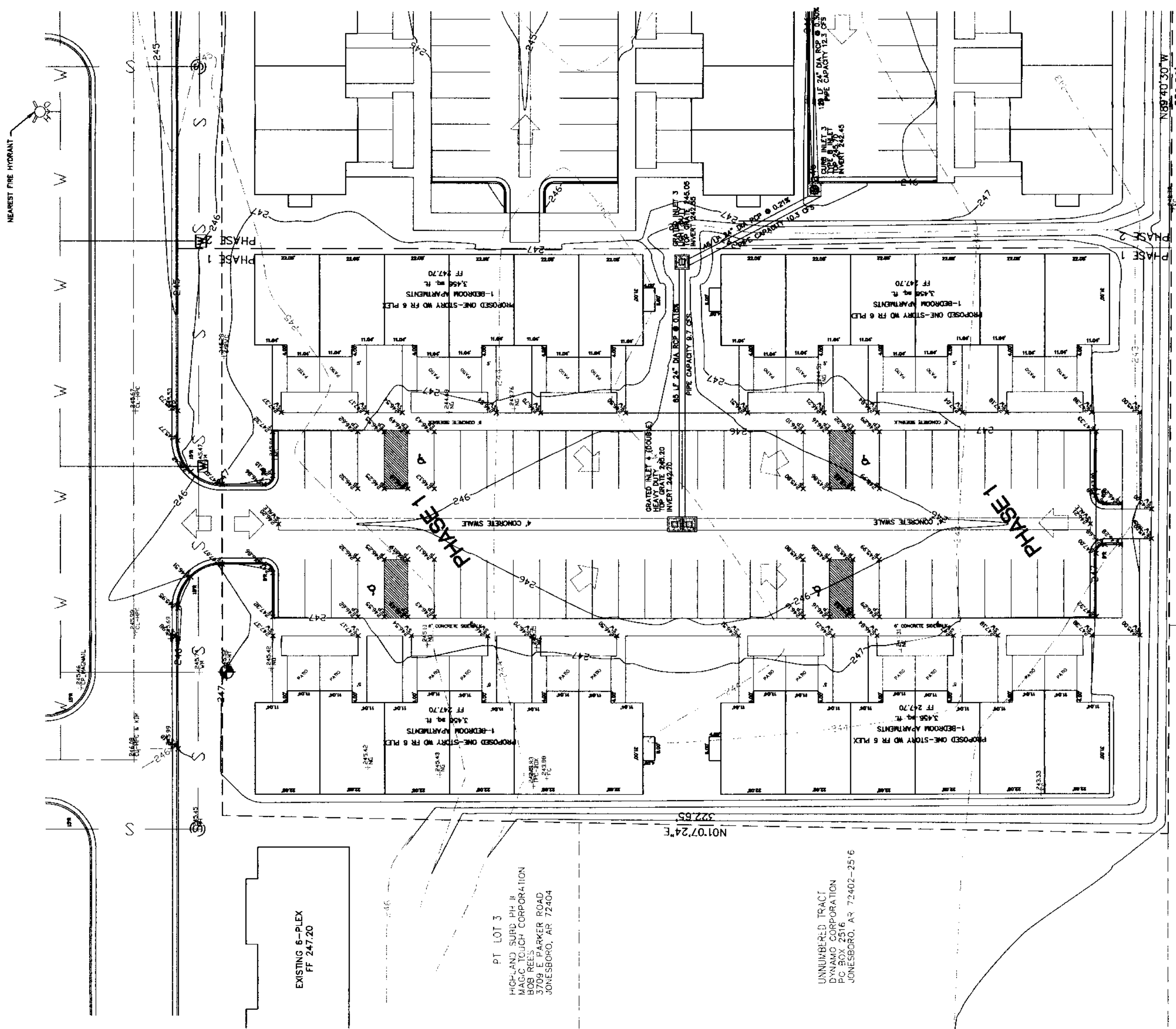
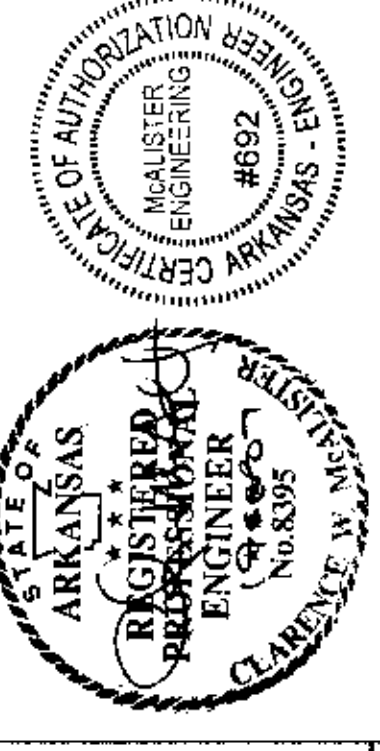
BEFORE CONSTRUCTION BEGINS
GIVE 48 HOURS NOTICE
FOR UNDERGROUND UTILITY LOCATIONS
CALL THE ARKANSAS ONE-CALL SYSTEM 1-800-482-8998

PHASE 1 - SITE DEVELOPMENT PLAN

JOB# 5555
MAGIC TOUCH APARTMENTS
JONESBORO, ARKANSAS

MCALISTER ENGINEERING
CIVIL ENGINEERING AND LAND SURVEYING
103 CE BLDG JONESBORO, AR 72404
870-681-1420

DRAWN BY: JH CHECKED BY: CM
SCALE: 1" = 20'
DATE: 05SEP07 CAD FILE: 0728201.dwg
DWG REF: 4E-14N-23



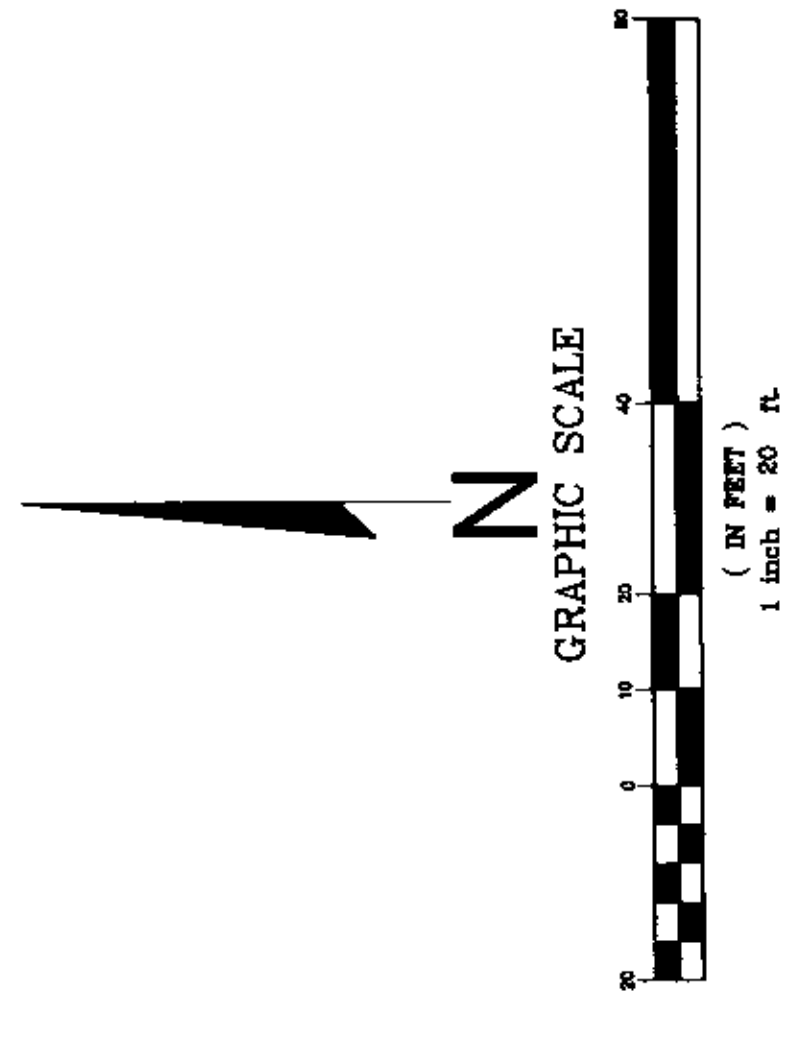
UNNUMBERED TRACT
ULA GILBERT
4905 E. HIGHLAND DR
JONESBORO, AR

UNNUMBERED TRACT
PREB E. RICEY
4000 HIGHLAND DR
JONESBORO, AR

PT LOT 3
HIGHLAND SUBD. PH. II
MAGIC TOUCH CORPORATION
BOB REES
3709 E PARKER ROAD
JONESBORO, AR 72404

UNNUMBERED TRACT
DYNAMO CORPORATION
P.O. BOX 2516
JONESBORO, AR 72402-2516

EXISTING 6-PLEX
FF 247.20



- FOUND IRON PIN
- EXISTING SPOT ELEVATION
- EXISTING GRADE CONTOURS
- FINISH GRADE CONTOURS
- ◆ BENCHMARK DATA
BM HUB AND TACK - WOODEN HUB WITH TACK
NEAR NE CORNER LOT 1
- FLOWLINE CONSTRUCTED SWALE W/ FLOW DIRECTION
- FINISHED GRADE ELEVATION
- INVERT SWALE
- TOP OF SIDEWALK
- TOP OF CURB
- ⊕ SANITARY SEWER MANHOLE
- ⊕ WATER METER
- ZONING SETBACK
- FENCE



BEFORE CONSTRUCTION BEGINS
GIVE 48 HOURS NOTICE
FOR UNDERGROUND UTILITY LOCATIONS
CALL THE ARKANSAS ONE-CALL SYSTEM 1-800-488-5999

PHASE 3 - SITE DEVELOPMENT PLAN

JOB# 5655
MAGIC TOUCH APARTMENTS
JONESBORO, ARKANSAS

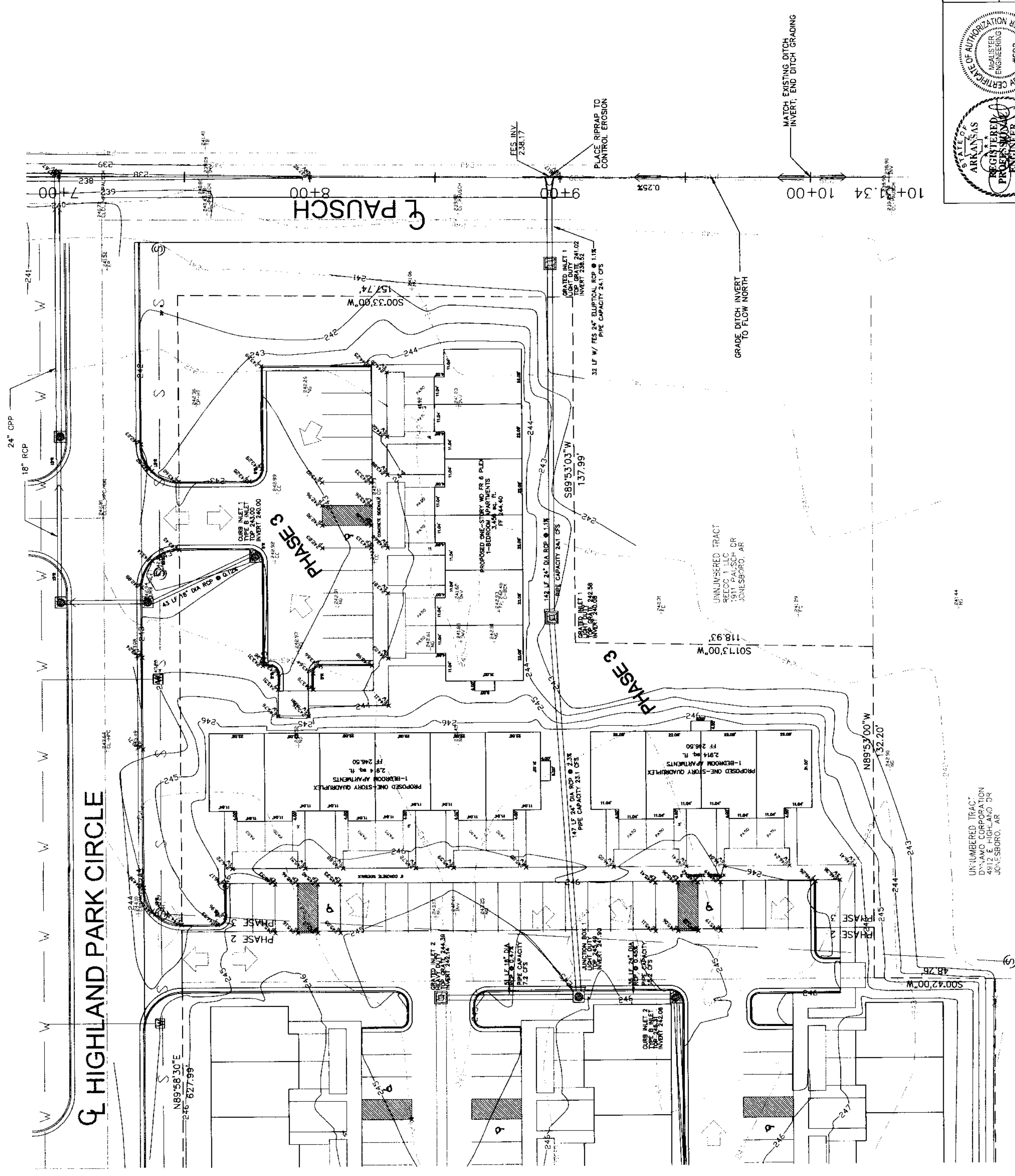
UNNUMBERED TRACT
DYNAMO CORPORATION
4912 E. HIGHLAND DR
JONESBORO, AR

REGISTERED PROFESSIONAL ENGINEER
MAGIC TOUCH APARTMENTS
No. 8395

CERTIFICATE OF AUTHORIZATION #5992
MAGIC TOUCH APARTMENTS
ENGINEERING
No. 8395

MCALISTER ENGINEERING
CIVIL ENGINEERING AND LAND SURVEYING

DRAWN BY: JH CHECKED BY: CM
SCALE: 1" = 20'



HIGHLAND PARK CIRCLE

PAUSCH

PHASE 3

PHASE 3

PHASE 3

PHASE 3

PHASE 3

PHASE 3

UNNUMBERED TRACT
DYNAMO CORPORATION
4912 E. HIGHLAND DR
JONESBORO, AR

UNNUMBERED TRACT
REECCO 1 LLC
5911 PAUSCH DR
JONESBORO, AR

CURB INLET 1
TYPE 8 INLET
TOP 243.00
INVERT 240.00

GRADED INLET 1
LIGHT DUTY
TOP 241.02
INVERT 238.02

GRADED INLET 1
LIGHT DUTY
TOP 242.88
INVERT 239.88

CURB INLET 2
TYPE 8 INLET
TOP 243.00
INVERT 240.00

CURB INLET 1
TYPE 8 INLET
TOP 243.00
INVERT 240.00

CURB INLET 2
TYPE 8 INLET
TOP 243.00
INVERT 240.00

CURB INLET 3
TYPE 8 INLET
TOP 243.00
INVERT 240.00

CURB INLET 4
TYPE 8 INLET
TOP 243.00
INVERT 240.00

CURB INLET 5
TYPE 8 INLET
TOP 243.00
INVERT 240.00

CURB INLET 6
TYPE 8 INLET
TOP 243.00
INVERT 240.00

CURB INLET 7
TYPE 8 INLET
TOP 243.00
INVERT 240.00

CURB INLET 8
TYPE 8 INLET
TOP 243.00
INVERT 240.00

CURB INLET 9
TYPE 8 INLET
TOP 243.00
INVERT 240.00

CURB INLET 10
TYPE 8 INLET
TOP 243.00
INVERT 240.00

CURB INLET 11
TYPE 8 INLET
TOP 243.00
INVERT 240.00

CURB INLET 12
TYPE 8 INLET
TOP 243.00
INVERT 240.00

CURB INLET 13
TYPE 8 INLET
TOP 243.00
INVERT 240.00

CURB INLET 14
TYPE 8 INLET
TOP 243.00
INVERT 240.00

CURB INLET 15
TYPE 8 INLET
TOP 243.00
INVERT 240.00

CURB INLET 16
TYPE 8 INLET
TOP 243.00
INVERT 240.00

CURB INLET 17
TYPE 8 INLET
TOP 243.00
INVERT 240.00

CURB INLET 18
TYPE 8 INLET
TOP 243.00
INVERT 240.00

CURB INLET 19
TYPE 8 INLET
TOP 243.00
INVERT 240.00

CURB INLET 20
TYPE 8 INLET
TOP 243.00
INVERT 240.00

CURB INLET 21
TYPE 8 INLET
TOP 243.00
INVERT 240.00

CURB INLET 22
TYPE 8 INLET
TOP 243.00
INVERT 240.00

CURB INLET 23
TYPE 8 INLET
TOP 243.00
INVERT 240.00

CURB INLET 24
TYPE 8 INLET
TOP 243.00
INVERT 240.00

CURB INLET 25
TYPE 8 INLET
TOP 243.00
INVERT 240.00

CURB INLET 26
TYPE 8 INLET
TOP 243.00
INVERT 240.00

CURB INLET 27
TYPE 8 INLET
TOP 243.00
INVERT 240.00

CURB INLET 28
TYPE 8 INLET
TOP 243.00
INVERT 240.00

CURB INLET 29
TYPE 8 INLET
TOP 243.00
INVERT 240.00

CURB INLET 30
TYPE 8 INLET
TOP 243.00
INVERT 240.00

CURB INLET 31
TYPE 8 INLET
TOP 243.00
INVERT 240.00

CURB INLET 32
TYPE 8 INLET
TOP 243.00
INVERT 240.00

CURB INLET 33
TYPE 8 INLET
TOP 243.00
INVERT 240.00

CURB INLET 34
TYPE 8 INLET
TOP 243.00
INVERT 240.00

CURB INLET 35
TYPE 8 INLET
TOP 243.00
INVERT 240.00

CURB INLET 36
TYPE 8 INLET
TOP 243.00
INVERT 240.00

CURB INLET 37
TYPE 8 INLET
TOP 243.00
INVERT 240.00

CURB INLET 38
TYPE 8 INLET
TOP 243.00
INVERT 240.00

CURB INLET 39
TYPE 8 INLET
TOP 243.00
INVERT 240.00

CURB INLET 40
TYPE 8 INLET
TOP 243.00
INVERT 240.00

CURB INLET 41
TYPE 8 INLET
TOP 243.00
INVERT 240.00

CURB INLET 42
TYPE 8 INLET
TOP 243.00
INVERT 240.00

CURB INLET 43
TYPE 8 INLET
TOP 243.00
INVERT 240.00

CURB INLET 44
TYPE 8 INLET
TOP 243.00
INVERT 240.00

CURB INLET 45
TYPE 8 INLET
TOP 243.00
INVERT 240.00

CURB INLET 46
TYPE 8 INLET
TOP 243.00
INVERT 240.00

CURB INLET 47
TYPE 8 INLET
TOP 243.00
INVERT 240.00

CURB INLET 48
TYPE 8 INLET
TOP 243.00
INVERT 240.00

CURB INLET 49
TYPE 8 INLET
TOP 243.00
INVERT 240.00

CURB INLET 50
TYPE 8 INLET
TOP 243.00
INVERT 240.00

CURB INLET 51
TYPE 8 INLET
TOP 243.00
INVERT 240.00

CURB INLET 52
TYPE 8 INLET
TOP 243.00
INVERT 240.00

CURB INLET 53
TYPE 8 INLET
TOP 243.00
INVERT 240.00

CURB INLET 54
TYPE 8 INLET
TOP 243.00
INVERT 240.00

CURB INLET 55
TYPE 8 INLET
TOP 243.00
INVERT 240.00

CURB INLET 56
TYPE 8 INLET
TOP 243.00
INVERT 240.00

CURB INLET 57
TYPE 8 INLET
TOP 243.00
INVERT 240.00

CURB INLET 58
TYPE 8 INLET
TOP 243.00
INVERT 240.00

CURB INLET 59
TYPE 8 INLET
TOP 243.00
INVERT 240.00

CURB INLET 60
TYPE 8 INLET
TOP 243.00
INVERT 240.00

CURB INLET 61
TYPE 8 INLET
TOP 243.00
INVERT 240.00

CURB INLET 62
TYPE 8 INLET
TOP 243.00
INVERT 240.00

CURB INLET 63
TYPE 8 INLET
TOP 243.00
INVERT 240.00

CURB INLET 64
TYPE 8 INLET
TOP 243.00
INVERT 240.00

CURB INLET 65
TYPE 8 INLET
TOP 243.00
INVERT 240.00

CURB INLET 66
TYPE 8 INLET
TOP 243.00
INVERT 240.00

CURB INLET 67
TYPE 8 INLET
TOP 243.00
INVERT 240.00

CURB INLET 68
TYPE 8 INLET
TOP 243.00
INVERT 240.00

CURB INLET 69
TYPE 8 INLET
TOP 243.00
INVERT 240.00

CURB INLET 70
TYPE 8 INLET
TOP 243.00
INVERT 240.00

CURB INLET 71
TYPE 8 INLET
TOP 243.00
INVERT 240.00

CURB INLET 72
TYPE 8 INLET
TOP 243.00
INVERT 240.00

CURB INLET 73
TYPE 8 INLET
TOP 243.00
INVERT 240.00

CURB INLET 74
TYPE 8 INLET
TOP 243.00
INVERT 240.00

CURB INLET 75
TYPE 8 INLET
TOP 243.00
INVERT 240.00

CURB INLET 76
TYPE 8 INLET
TOP 243.00
INVERT 240.00

CURB INLET 77
TYPE 8 INLET
TOP 243.00
INVERT 240.00

CURB INLET 78
TYPE 8 INLET
TOP 243.00
INVERT 240.00

CURB INLET 79
TYPE 8 INLET
TOP 243.00
INVERT 240.00

CURB INLET 80
TYPE 8 INLET
TOP 243.00
INVERT 240.00

CURB INLET 81
TYPE 8 INLET
TOP 243.00
INVERT 240.00

CURB INLET 82
TYPE 8 INLET
TOP 243.00
INVERT 240.00

CURB INLET 83
TYPE 8 INLET
TOP 243.00
INVERT 240.00

CURB INLET 84
TYPE 8 INLET
TOP 243.00
INVERT 240.00

CURB INLET 85
TYPE 8 INLET
TOP 243.00
INVERT 240.00

CURB INLET 86
TYPE 8 INLET
TOP 243.00
INVERT 240.00

CURB INLET 87
TYPE 8 INLET
TOP 243.00
INVERT 240.00

CURB INLET 88
TYPE 8 INLET
TOP 243.00
INVERT 240.00

CURB INLET 89
TYPE 8 INLET
TOP 243.00
INVERT 240.00

CURB INLET 90
TYPE 8 INLET
TOP 243.00
INVERT 240.00

CURB INLET 91
TYPE 8 INLET
TOP 243.00
INVERT 240.00

CURB INLET 92
TYPE 8 INLET
TOP 243.00
INVERT 240.00

CURB INLET 93
TYPE 8 INLET
TOP 243.00
INVERT 240.00

CURB INLET 94
TYPE 8 INLET
TOP 243.00
INVERT 240.00

CURB INLET 95
TYPE 8 INLET
TOP 243.00
INVERT 240.00

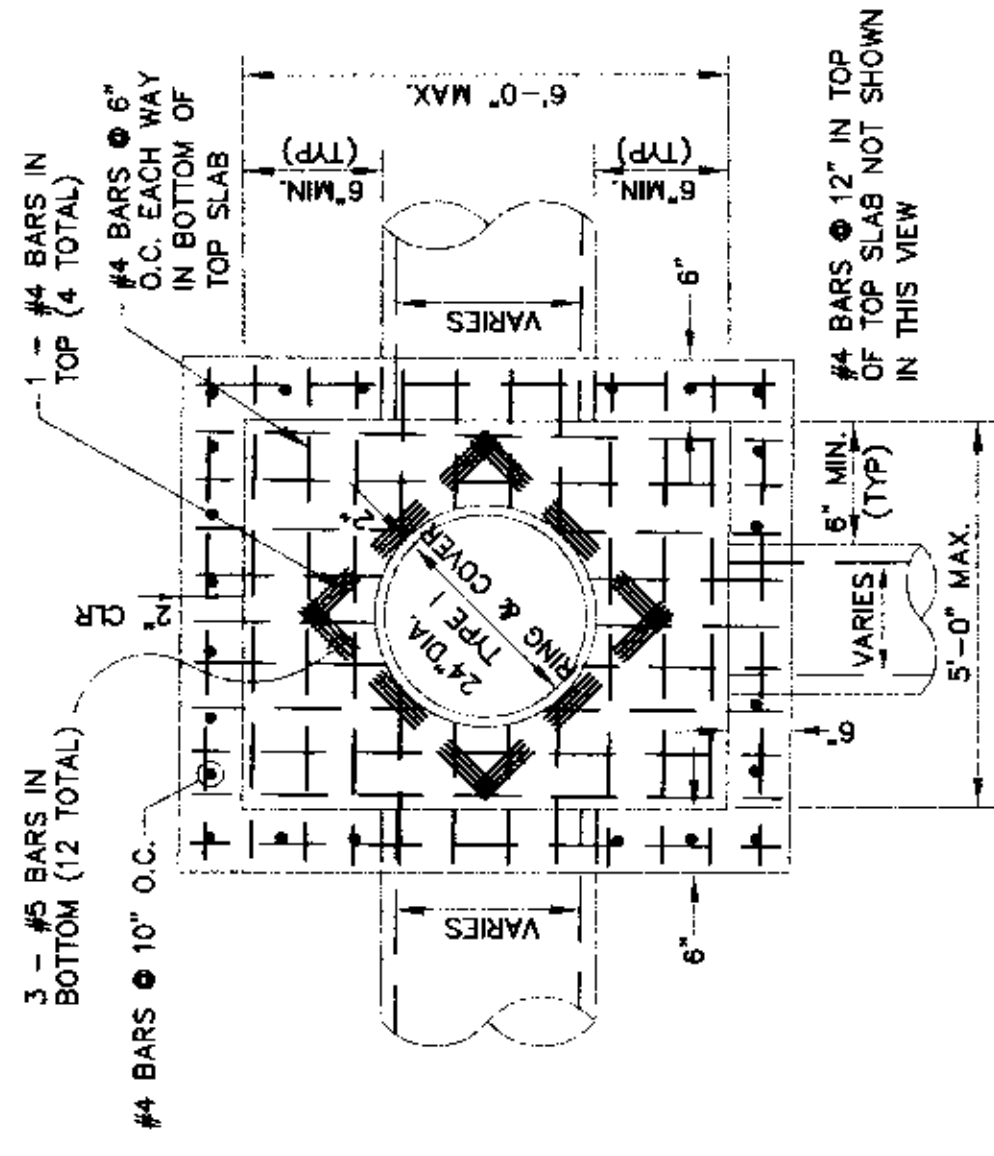
CURB INLET 96
TYPE 8 INLET
TOP 243.00
INVERT 240.00

CURB INLET 97
TYPE 8 INLET
TOP 243.00
INVERT 240.00

CURB INLET 98
TYPE 8 INLET
TOP 243.00
INVERT 240.00

CURB INLET 99
TYPE 8 INLET
TOP 243.00
INVERT 240.00

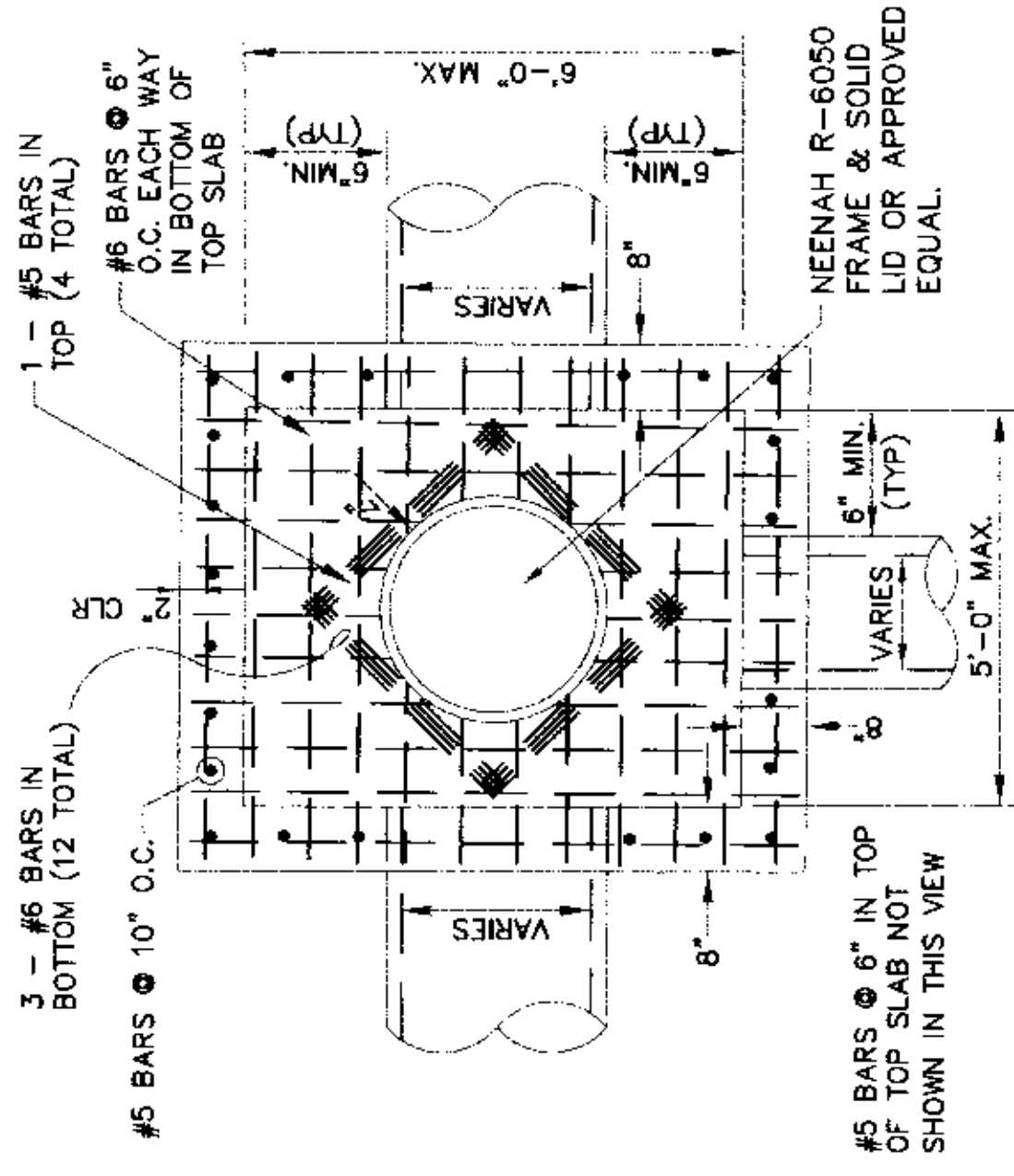
CURB INLET 100
TYPE 8 INLET
TOP 243.00
INVERT 240.00



PLAN - JUNCTION BOX - LIGHT

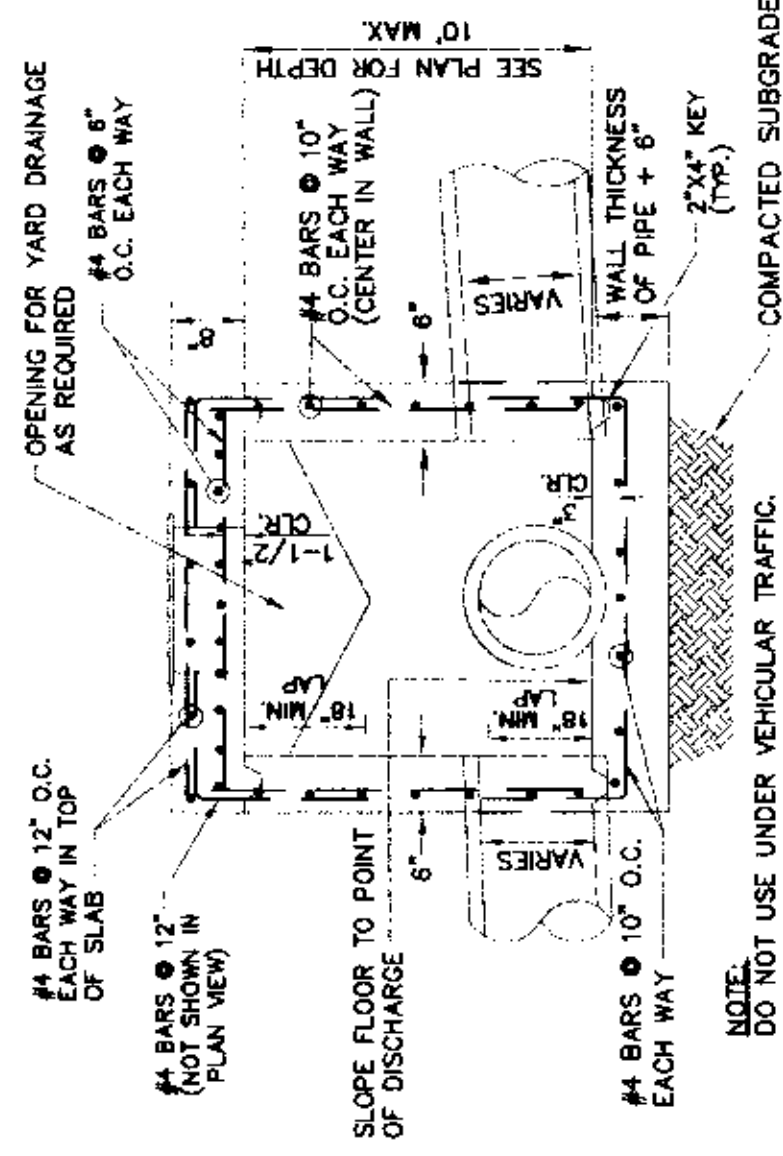
SCALE: NONE

NOTE:
DO NOT USE UNDER VEHICULAR TRAFFIC.



PLAN - JUNCTION BOX - HEAVY

SCALE: NONE

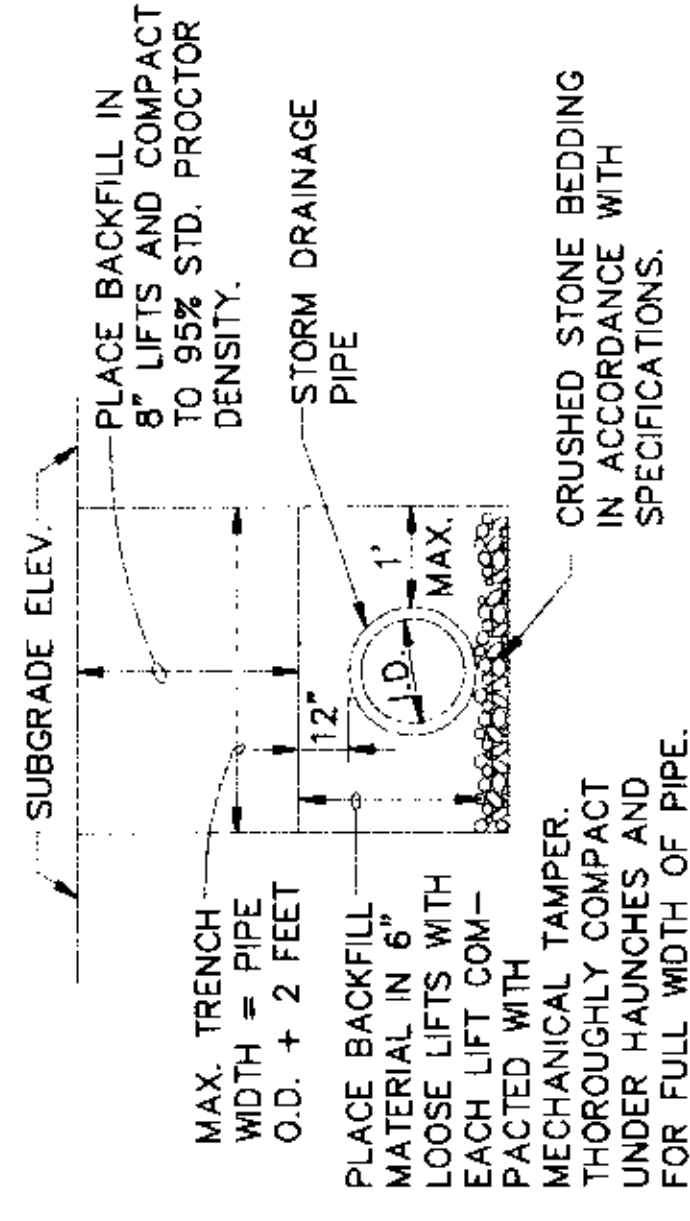


SECTION - JUNCTION BOX - LIGHT

N.T.S.

NOTE:
1. JUNCTION BOXES MORE THAN 3 FEET DEEP SHALL HAVE STANDARD MANHOLE STEPS PLACED @ 15' O.C.

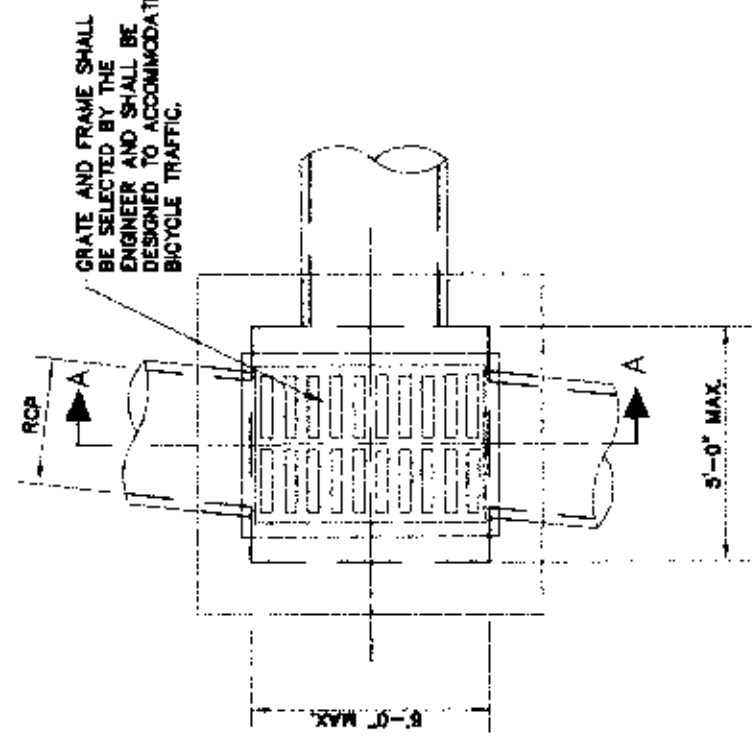
2. SEE REINFORCING DETAIL FOR OPENING IN WALL OR SLAB.



DRAINAGE PIPE TRENCH

THE EXCAVATION IN SOIL

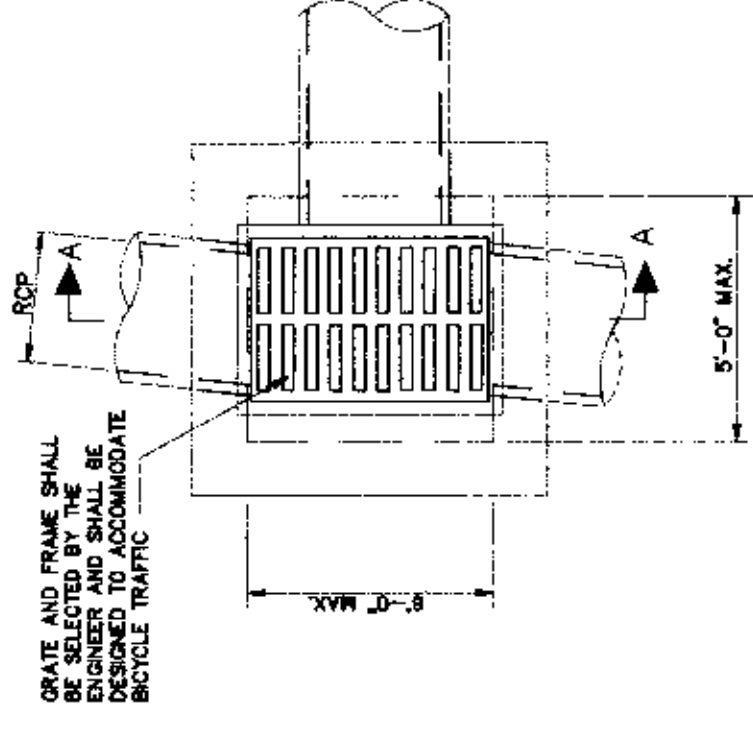
NOTE: TO BE USED WITH NEW STREET CONSTRUCTION. SEE DRAWING NO. PT-1 FOR EXISTING STREET CUTS.



PLAN - GRATE INLET - LIGHT

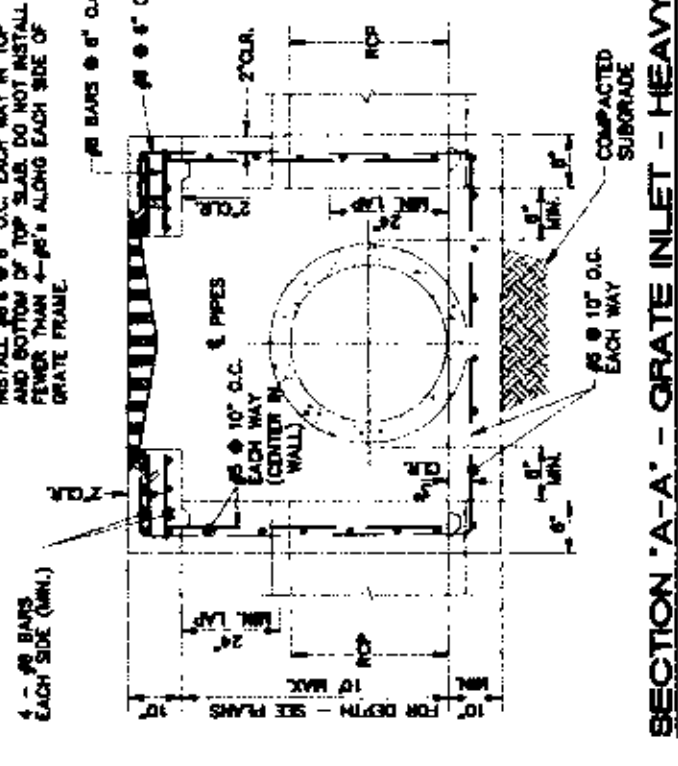
N.T.S.

NOTE:
DO NOT USE UNDER VEHICULAR TRAFFIC.



PLAN - GRATE INLET - HEAVY

N.T.S.

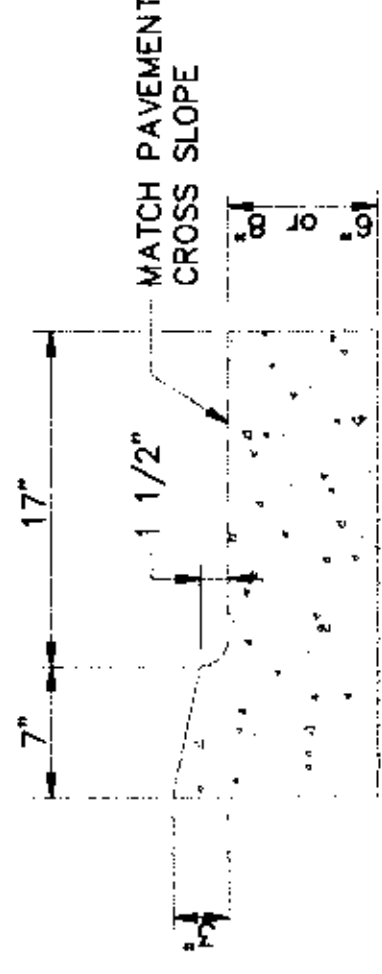


SECTION 'A-A' - GRATE INLET - HEAVY

N.T.S.

NOTE:
1. SHOULD BE USED TO ACCOMMODATE VEHICULAR TRAFFIC.
2. JUNCTION BOXES MORE THAN 3 FEET DEEP SHALL HAVE STANDARD MANHOLE STEPS PLACED @ 15' O.C.

3. SEE REINFORCING DETAIL FOR OPENING IN WALL OR SLAB.

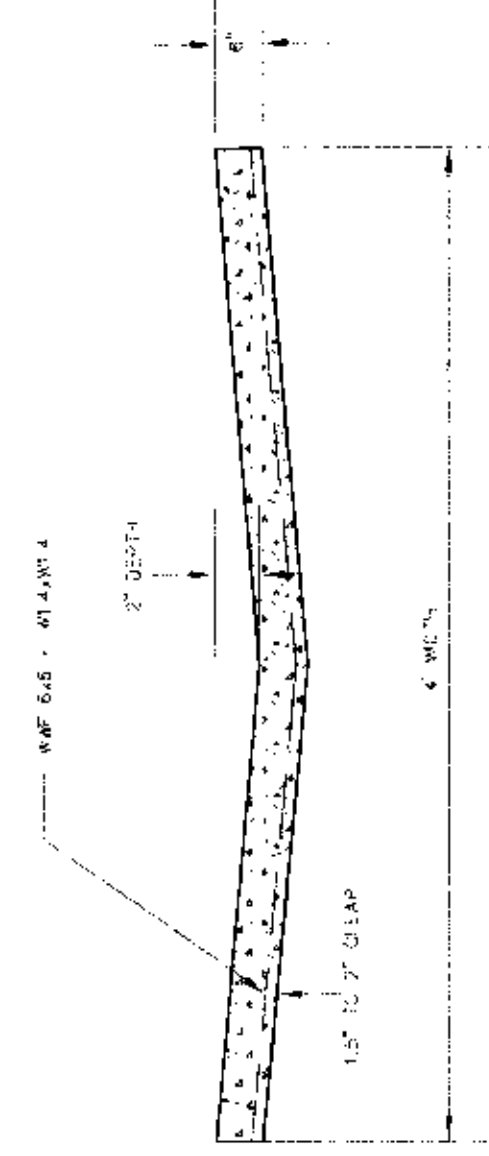


TYPE 'A' - DEPRESSED

NOTE:
INSTALL DEPRESSED CURB & GUTTER AT DRIVEWAYS AS SPECIFIED IN THE PLANS, OR AS DIRECTED BY THE ENGINEER.

COMBINATION CURB AND GUTTER

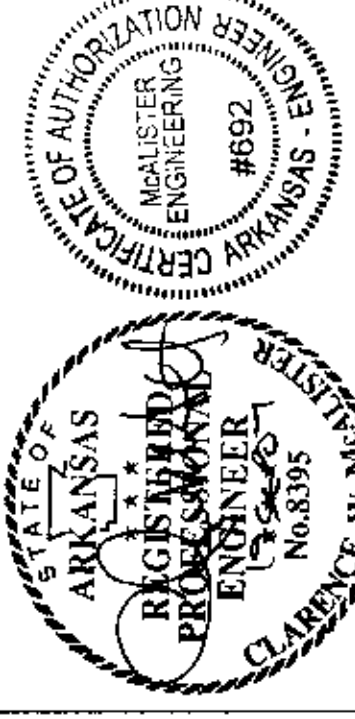
N.T.S.



DETAIL - CONCRETE DRAINAGE SWALE

N.T.S.

REMOVE OR ADD ASPHALT AS NECESSARY TO TRANSITION TO CONCRETE SWALE. CONTRACTION JOINTS AT 12' INTERVALS.



DETAILS

MAGIC TOUCH APARTMENTS - JOB #5555
JONESBORO, CRAIGHEAD COUNTY, ARKANSAS

McALISTER ENGINEERING
CIVIL ENGINEERING AND LAND SURVEYING

1019 CR 600 JONESBORO, AR 72404
870-631-1620

DRAWN BY: CM CHECKED BY: CM

SCALE:

DATE: 04SEP07 CAD FILE: 0728201.DWG