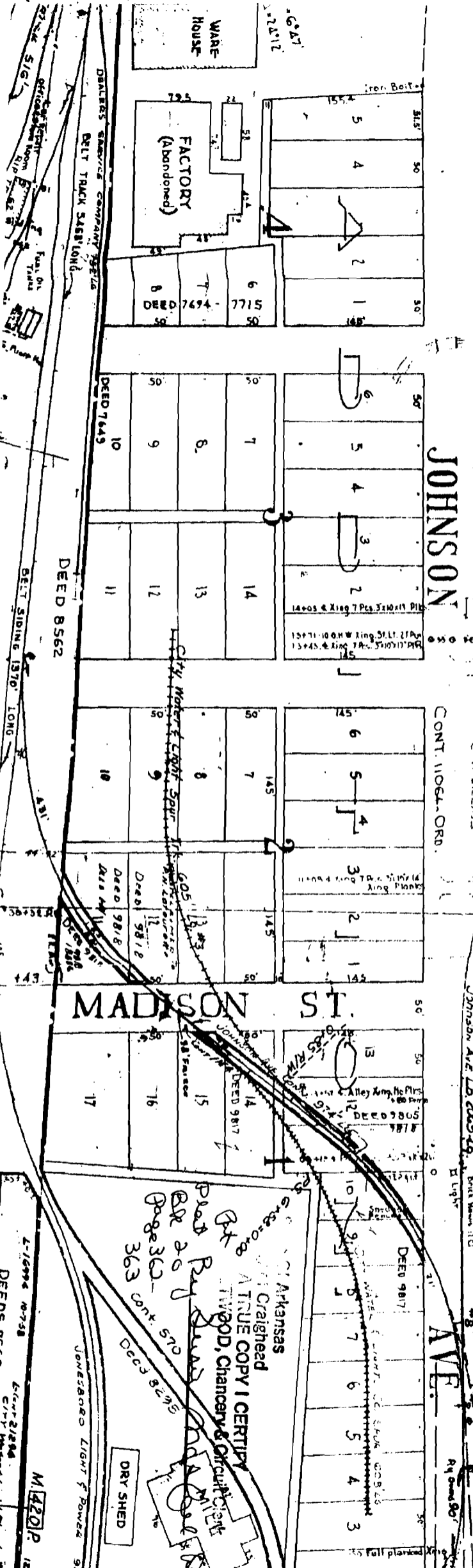
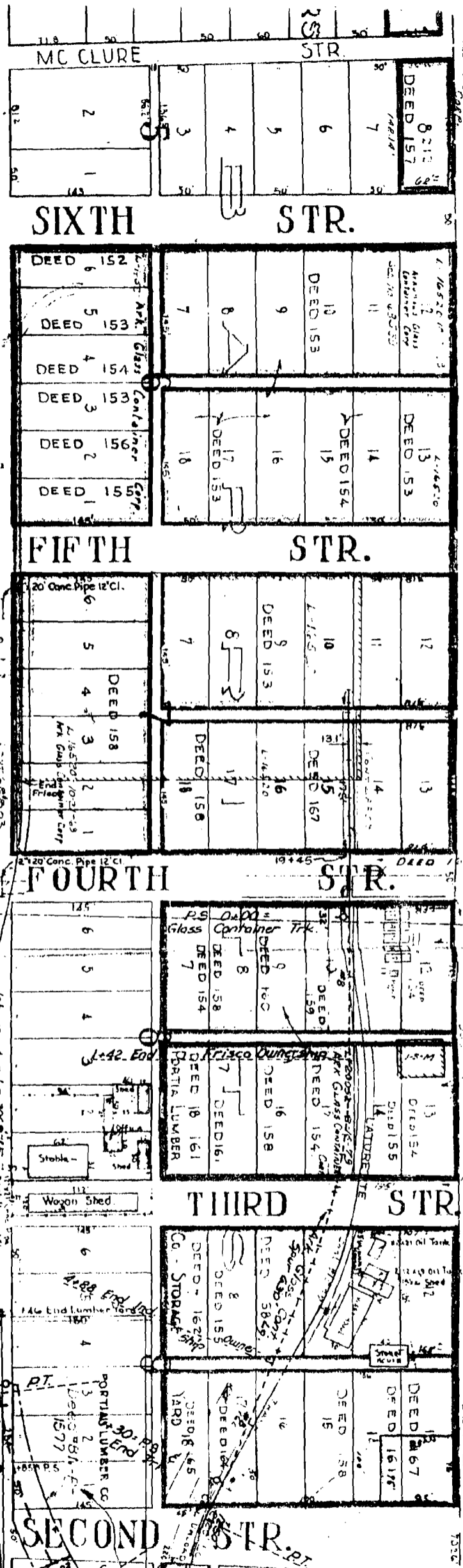


Arkansas Glass Corporation

WORD

AVE.



Arkansas  
 Craighead  
 ATTORNEY COPY I CERTIFY  
 TWOOD, Chancery & Concut Clerk  
 363 Cont. 570  
 Dec 5 8 29  
 DRY SHED  
 M 420/P  
 DEEDS 8565 - 8566  
 4-6-88