

# CITY OF JONESBORO

---

## PARKS AND RECREATION MASTER PLANNING INITIATIVES

# PARK PLANNING INITIATIVES

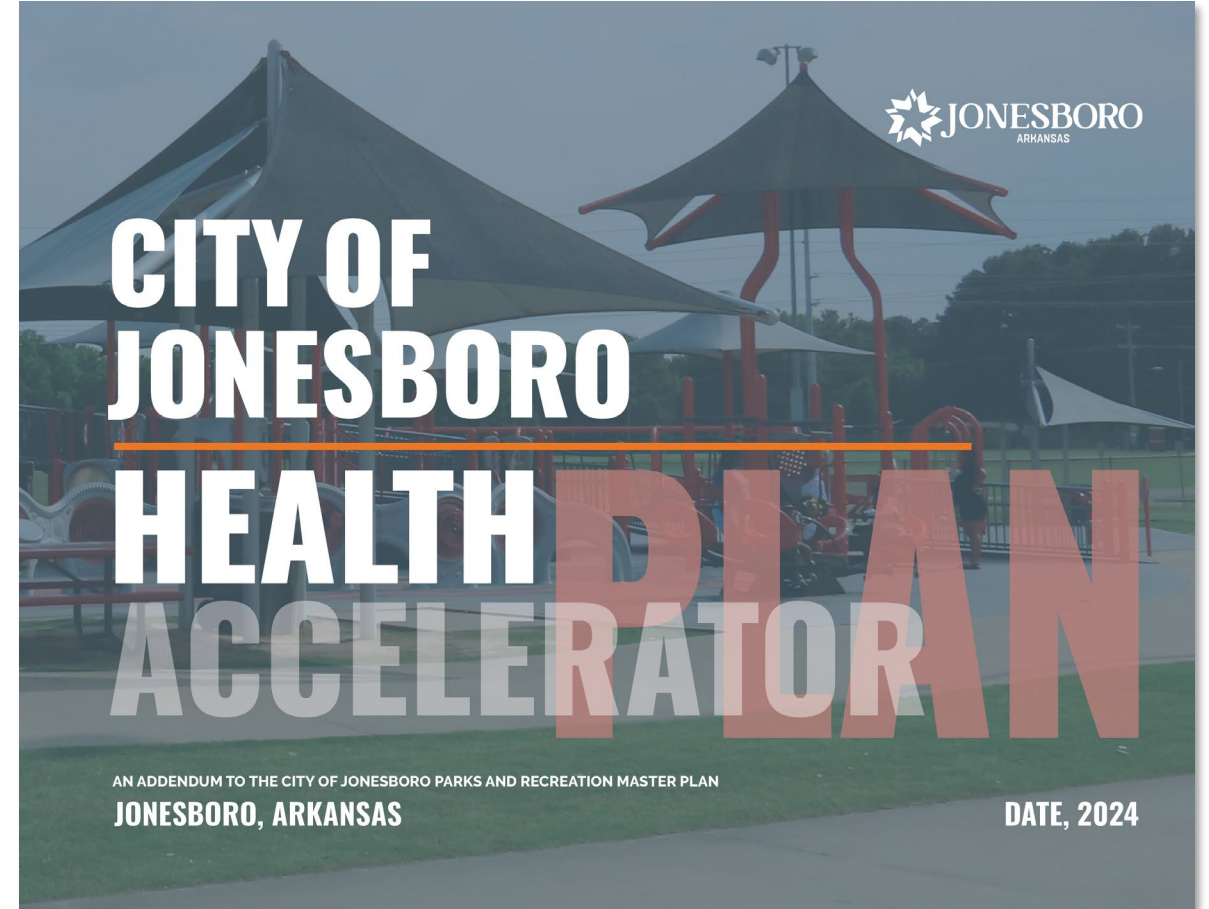
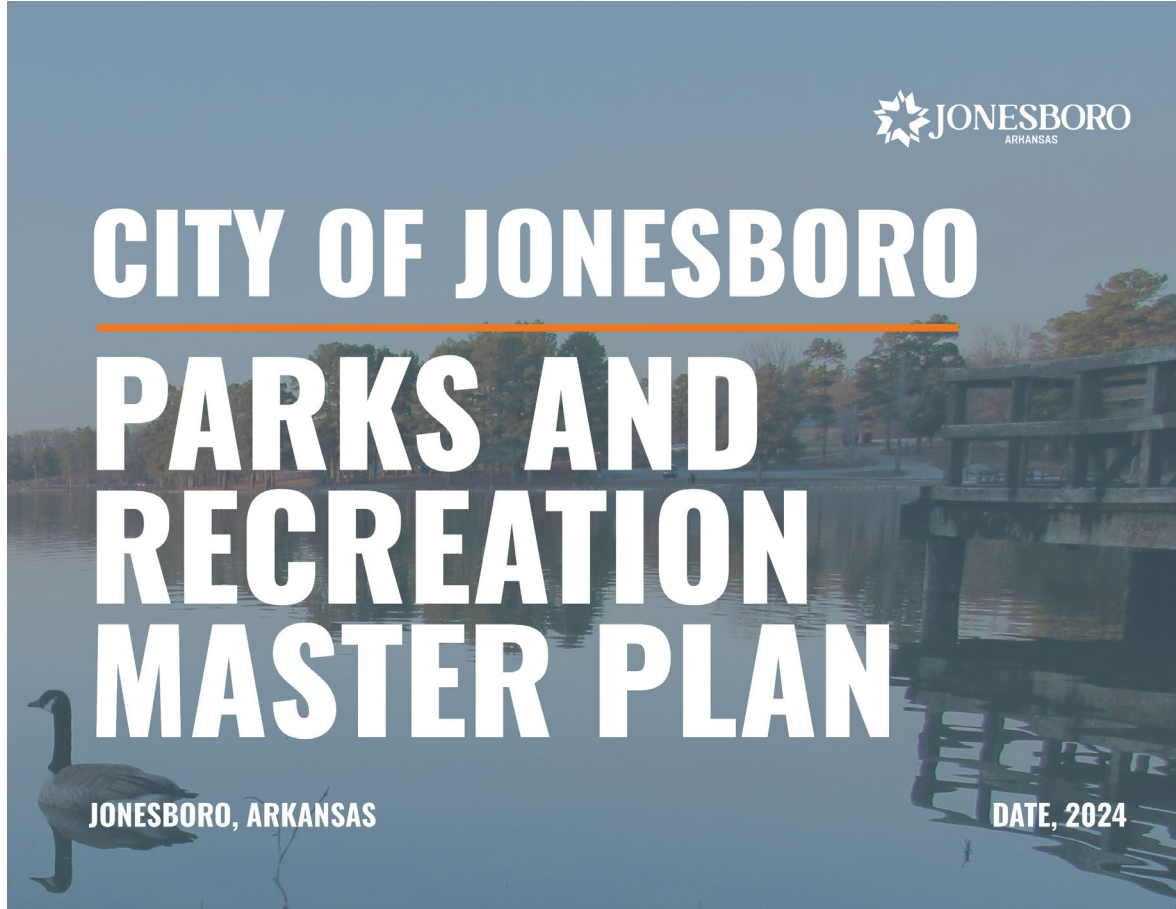
Jonesboro City Council

May 7, 2024



# DUAL PLANNING INITIATIVES

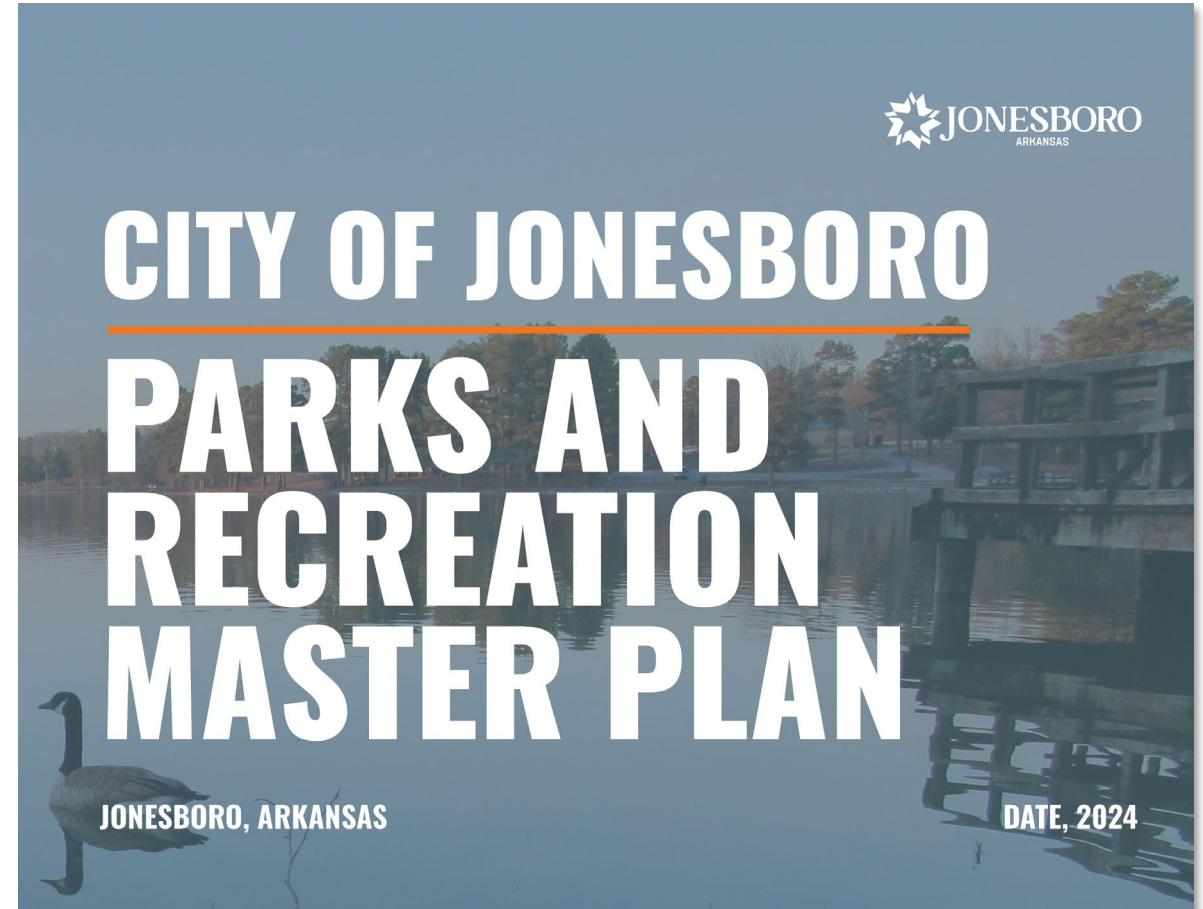
---



# MASTER PLAN PURPOSE

---

- Park and facility level of service
- Development and maintenance of facilities
- Equity, access and resilience
- Community partnerships
- Community preferences
- Funding (capital improvement program, grants, etc.)

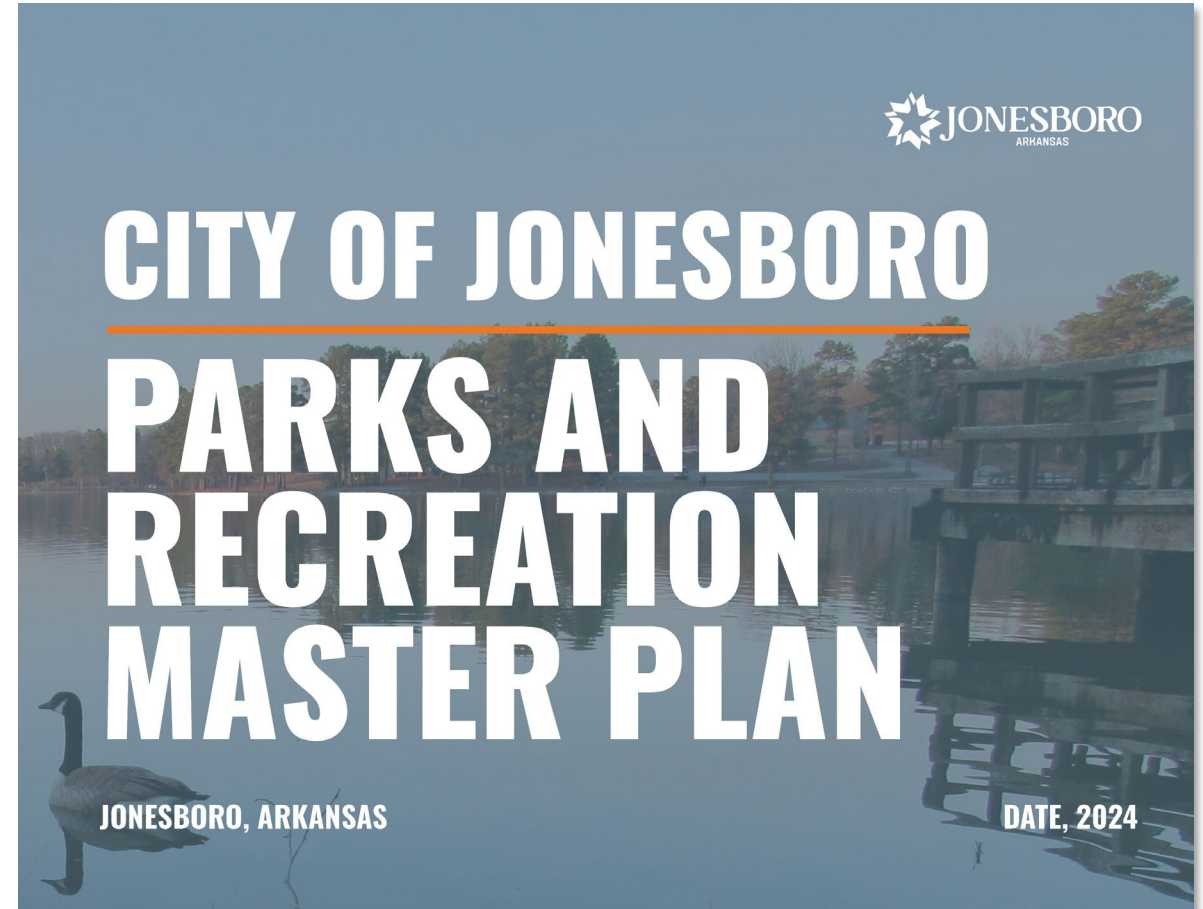




# MASTER PLAN PURPOSE

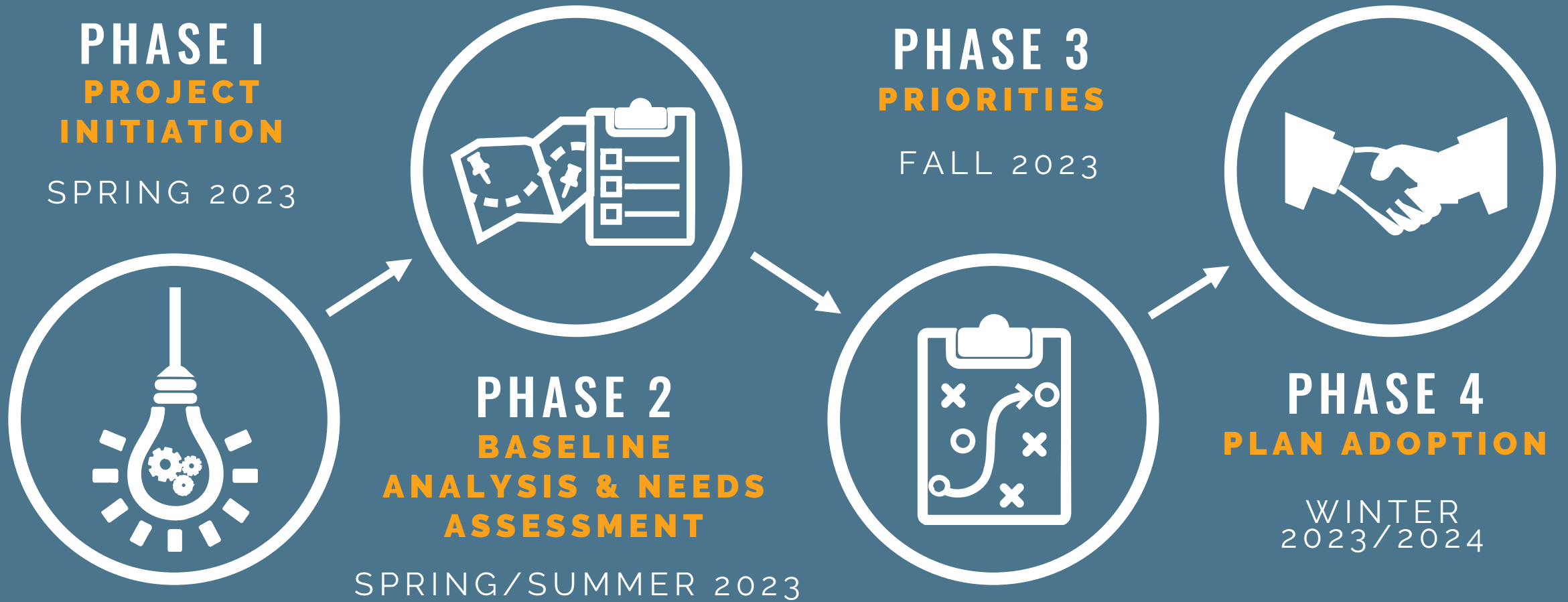
---

- **Park and facility level of service**
- Development and maintenance of facilities
- Equity, access and resilience
- Community partnerships
- **Community preferences**
- Funding (capital improvement program, grants, etc.)



# MASTER PLAN PROCESS

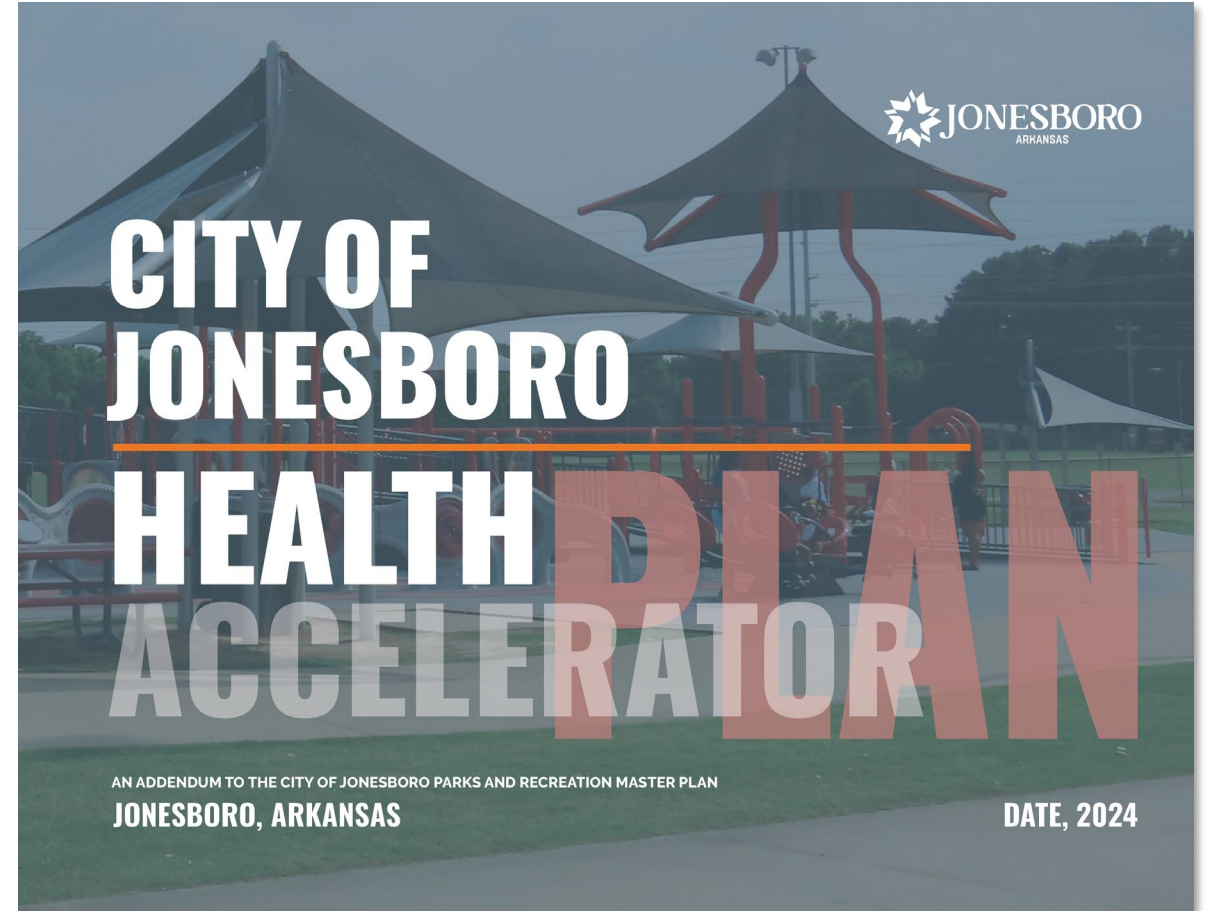
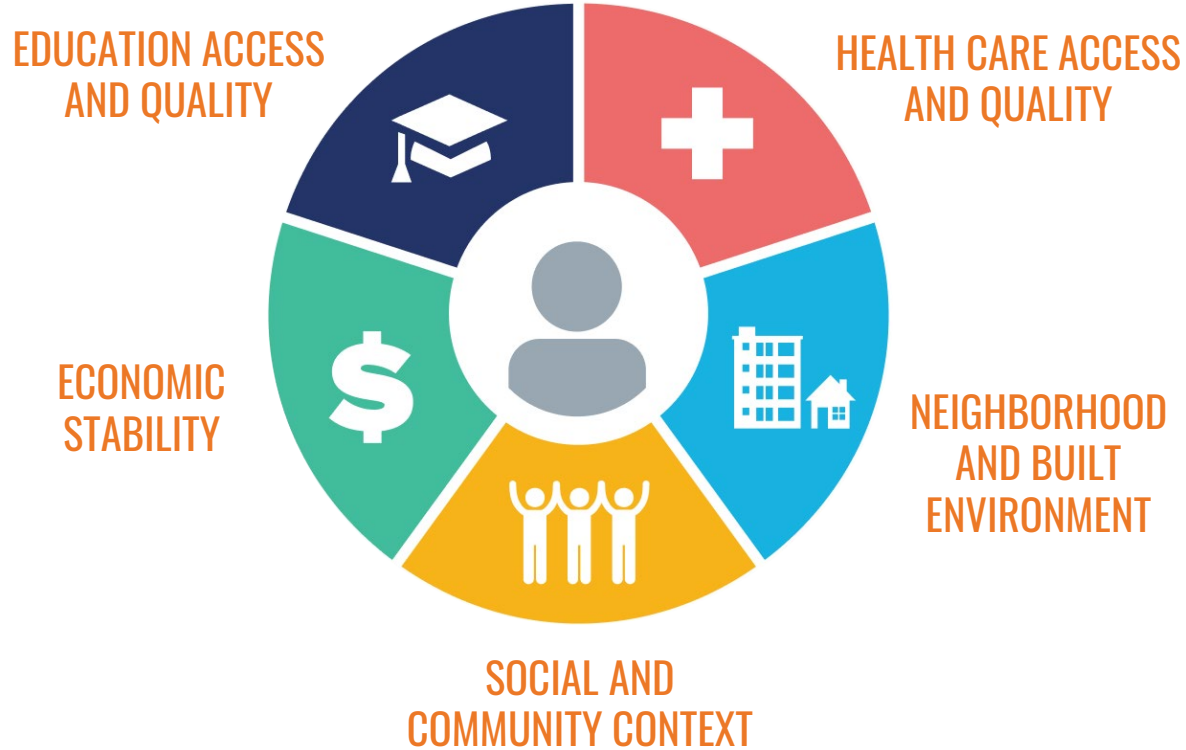
---





# ACCELERATOR PLAN PURPOSE

**CENTER FOR DISEASE CONTROL  
HEALTH ACCELERATOR GRANT  
SOCIAL DETERMINANTS OF HEALTH**



# ACCELERATOR PLAN PURPOSE

## GRANT APPLICATION OBJECTIVES

- **Increase accessibility** of parks and recreational facilities for people with disabilities.

## TARGET POPULATIONS

- Persons with a disability
- Persons experiencing poverty
- Ethnic and racial minorities
- Persons lacking housing and/or transportation

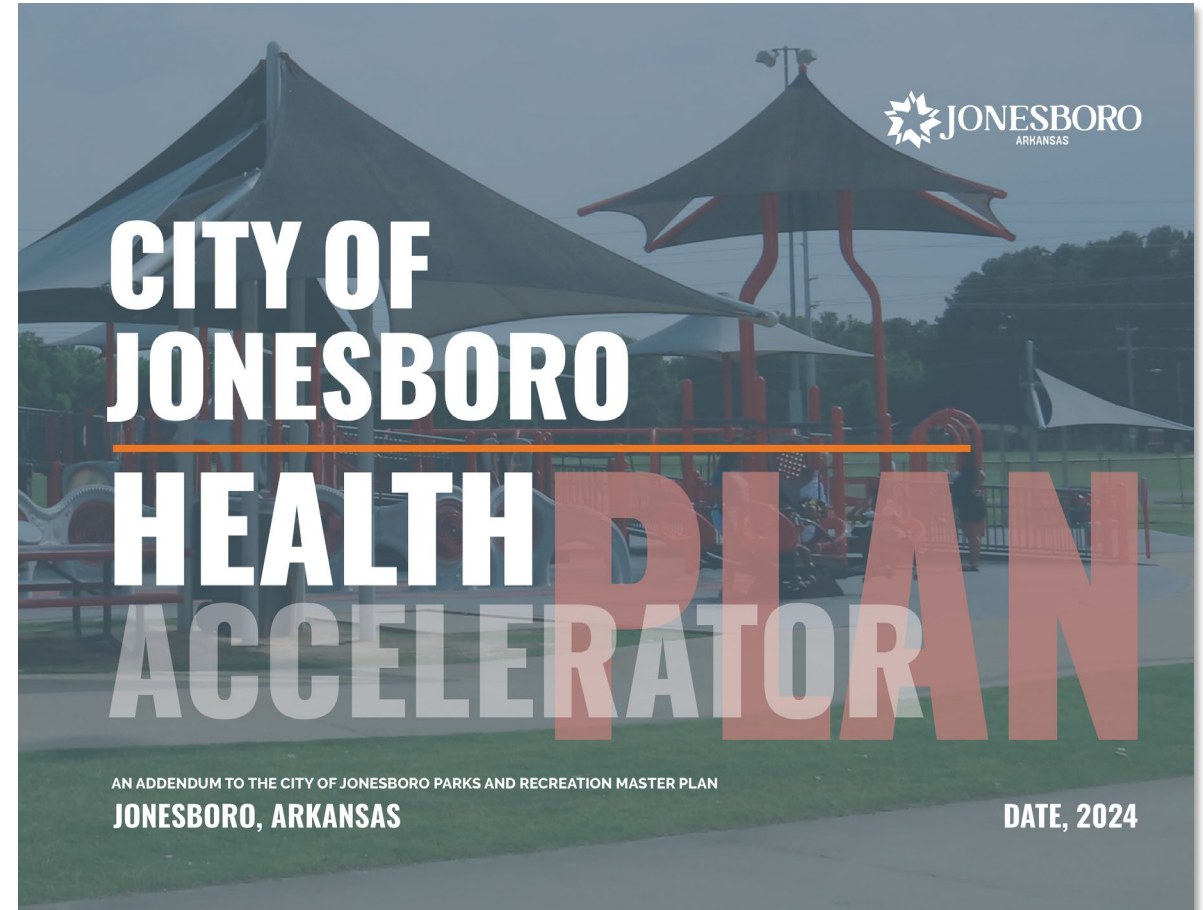
## SDOH PRIORITY AREAS



NEIGHBORHOOD  
AND BUILT  
ENVIRONMENT



SOCIAL AND  
COMMUNITY  
CONTEXT





# REPORT STRUCTURE/ PRODUCTS

---

## PARKS AND RECREATION MASTER PLAN



# REPORT PRODUCTS

## MASTER PLAN (SUMMARY PLAN)

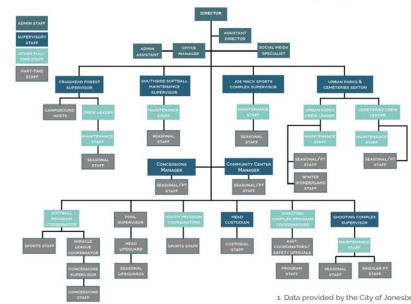
# CITY OF JONESBORO PARKS AND RECREATION MASTER PLAN

### OUR PRACTICES

#### STAFFING

Jonesboro Parks and Recreation Department (the Department) staff are distributed across nine divisions, outlined in organizational structure to the right. While most municipal park spaces are under the supervision of the Urban Parks and Cemeteries Supervisor, four of the city's twenty-two parks have a dedicated supervisor and crew. These include Craighoad Forest Park, Joe Mack Campbell Sports Complex, Jonesboro Shooting Sports Complex, and Southside Softball Complex. The Department employs 95.5 full time equivalent (FTE) staff members, with 33 full-time staff and 145 part-time/seasonal staff. When compared to communities of a similar size, Jonesboro's dedicated parks and recreation staff commitment exceeds the national median of 75.8 FTE, but below the upper quartile of 127.5 FTE for communities of a similar size. Regardless, Jonesboro's full-time parks and recreation staff positions account for only a small percentage (3 percent) of its FTE staff positions.

#### PARKS AND RECREATION ORGANIZATIONAL STRUCTURE (2024)<sup>1</sup>



1. Data provided by the City of Jonesboro.

#### WHERE DO WE STAND?

The Department's staffing and budget level of service (LOS) is calculated and compared to national averages for similar sized communities, as recorded through the 2023 "NRPA Agency Performance Review". These comparisons are used to understand how Jonesboro's operational practices are meeting the needs of residents. The findings of the review indicate that the City of Jonesboro is allocating less funding to parks and recreation compared to other communities. This suggests the Department is doing more with less.

#### KEY FINDINGS

Jonesboro allocates 41% less to parks and recreation than communities of a similar size.

#### OPERATIONS ANALYSIS (2023)

Metric	Jonesboro Parks and Recreation Department	NRPA Performance Review
Full-time Equivalent Staff	95.5 FTE <sup>1</sup>	75.8 FTE (Median) / 127.5 FTE (Upper Quartile)

\$3,645 Jonesboro parks budget per acre of parkland.	\$59.43 Jonesboro parks budget per capita.
---	---

### OUR WORK PROGRAM

This Master Plan recommends 56 strategies to improve the long-term community-wide value of the parks and recreation system. Strategies are organized according to four guiding principles that address the findings presented in this Master Plan: Access, Investments, Programs, and Service.

The strategies listed in our parks and recreation Work Program (pgs. 57-63) are not listed according to priority and should not deter community leaders and stakeholders from considering other future actions or initiatives intended to enhance the Jonesboro parks and recreation system. Should a future action or initiative advance one of the goals contained in this Plan then it may be pursued with as much energy as the recommendations herein. In contrast, where activities or initiatives diverge significantly from this Plan, the City should amend the plan document.

#### WORK PROGRAM PARAMETERS

Our parks and recreation Work Program is organized by topic, strategy type, and timeframe, and considers potential implementation partners.

##### STRATEGY TYPE

- Investment:** Capital improvement (for inclusion in Capital Improvement Plan) or general fund expenditures.
- Operations:** New or altered programs, staffing, or procedures.
- Policy:** Official procedures or policies used to make City decisions.
- Regulation:** Council approved regulations used to direct growth or additional actions in the City.
- Study:** Additional examination required to determine best result.

##### TIMEFRAME

- Near-term:** Strategies which should be initiated in the next one to two years. These are often the City's top priorities.
- Mid-Term:** Strategies that may be initiated within the next three to five years. Initiation may be dependent on other strategies.
- Long-Term:** Strategies to be implemented in the long term (5+ years) or may be reevaluated in future planning initiatives.
- Ongoing:** Strategies that may apply to the entire planning period, or may occur on a recurring basis.

##### PARTNERSHIPS

- One or more entities may participate in implementing an individual action. This may include City staff, non-profit agencies, or other non-municipal group or entities. Non-municipal partnering agencies (public or private) may lead implementation or may support the identified implementing agency. Identified partnership may change as additional organizations form or as plan goals change.

### OUR PARKS SYSTEM PRIORITIES

All the strategies listed in Jonesboro's parks and recreation Work Program are important. None are ranked by priority, although the Work Program does include suggested time frames for initiation. Nonetheless, Jonesboro must make choices when determining where to focus its collective energy when implementing this Plan. To focus the City's efforts, the following topics have been identified as parks and recreation priorities.

#### TOPIC

- INDOOR SPORTS COMPLEX:** Continue design and construction of the municipal indoor sports complex to increase the City's sport court and athletic field levels of service and attract regional sporting events.
- PARKLAND LEVEL OF SERVICE/SERVICE LEVEL GAPS:** Utilize the acreage and access standards identified in this Master Plan as a guide for minimum city-wide parkland levels of service (pg. 22).
- AQUATICS FACILITIES:** Increase access to aquatic recreation through the phased renovation/construction of competitive and recreational pools, and splash pads/spray grounds.
- DEPARTMENT RESTRUCTURING:** Optimize recreational service delivery through re-organization of the Parks and Recreation Department under distinct operations and programming divisions, and supported by the addition of other specialist staff.
- TRAILS NETWORK:** Improve access to recreation, fitness, and transportation options throughout Jonesboro through completion of the planned city-wide trails network and the construction of a regional trail connecting Jonesboro with other Northeast Arkansas communities.
- ASSET MANAGEMENT:** Implement standardized park maintenance policies, programs, and maintenance schedules based on a digital asset management inventory that anticipates facility life-cycles.
- WALKSHED ENHANCEMENTS:** Invest in improvements identified in the Jonesboro Health Accelerator Plan to enhance pedestrian and bicycle access to parks from surrounding neighborhoods.
- RECREATIONAL PROGRAMMING:** Expand city-sponsored or facilitated recreational programming and events to fill gaps in community need and maximize the use of municipal facilities.
- INCLUSIVE RECREATION:** Increase access to adaptive and inclusive recreational facilities and programming across the municipal parks system.
- ACCELERATOR PARKS:** Fund large-scale renovation of Allen/Landsbrook Park and Northside/Crews Park to serve as renewed "hubs" of inclusive recreation opportunities.

#### RESOURCES<sup>1</sup>

- Strategies: N/A. Initiated. Information: Appendix C
- Strategies: A1, A2, A10, A13. Information: Appendix B
- Strategies: I2, Pg. Information: Appendix A, B, C
- Strategies: P2, S1, S2, S5, S7, S9. Information: Appendix E
- Strategies: A3, A4, A22. Information: Appendix B
- Strategies: I10, I11, S10, S11, S12, S13. Information: Appendix E
- Strategies: A10. Information: Jonesboro Health Accelerator Plan
- Strategies: P1 - P14. Information: Appendix A, D
- Strategies: I4, I7, P11, P12, S2. Information: Jonesboro Health Accelerator Plan
- Strategies: I5. Information: Jonesboro Health Accelerator Plan

1. "Strategies" located on pages 57-63; "Resources" described on page 64.

DATE, 2024

## HEALTH ACCELERATOR PLAN CROSS-REFERENCE



# REPORT PRODUCTS

---

## TECHNICAL MEMORANDA

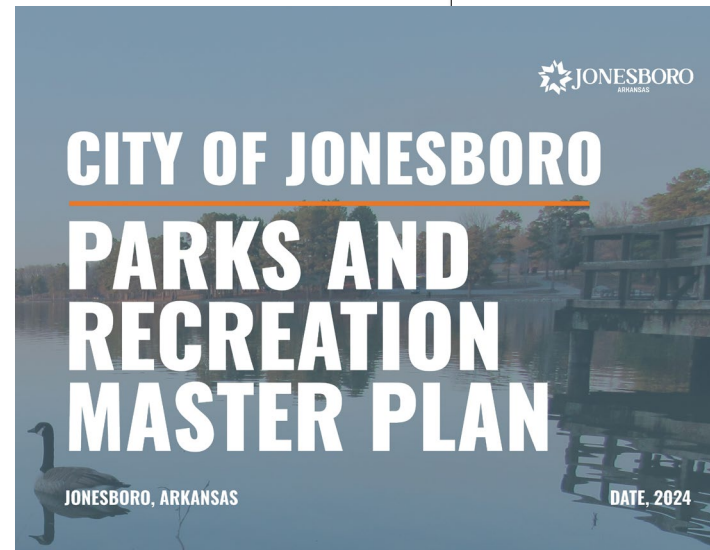
- Access (Standards-based) Assessment
- Demand Assessment
- Conditions Assessment
- Recreational Programming Assessment
- Indoor Recreational Facilities
- Operational Assessment

**DRAFT:** March 11, 2024

---

## ACCESS-BASED ASSESSMENT

Jonesboro Parks and Recreation Master Plan  
*for the*  
City of Jonesboro, AR





# PUBLIC OUTREACH

---

# PARKS AND RECREATION MASTER PLAN

**THANK YOU FOR  
PARTICIPATING!**

VISIT OUR WEBPAGE  
FOR MORE INFORMATION  
AND TO TAKE THE  
COMMUNITY SURVEY



halff

<https://www.jonesboro.org/624/Pardon-Our-Progress-PARKS-RECREATION-MAP>

# METHODS OF OUTREACH

---



**FOCUS  
GROUPS**



**ADVISORY  
COMMITTEE**



**PUBLIC  
INFORMATION  
BOOTHS**



**COMMUNITY  
SURVEY**



**INTERACTIVE  
MAP**



# OUTREACH RESULTS

---

- Over 1200+ survey responses
- 60+ interactive map participants
- 135+ public information booth participants (6 locations)

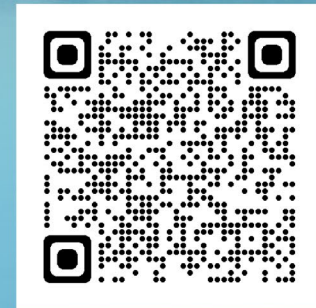


## THANK YOU FOR PARTICIPATING!

---

VISIT OUR WEBPAGE FOR MORE INFORMATION AND TO TAKE THE COMMUNITY SURVEY

<https://www.jonesboro.org/624/Pardon-Our-Progress-PARKS-RECREATION-MAS>



 halff

 JONESBORO  
ARKANSAS

# VISION STATEMENT

---

**Our parks and recreation system will empower Jonesboro residents to live healthy and happy lives through access to quality, diverse, and activated park spaces and recreation facilities.**

# VISION STATEMENT

---

“Our parks and recreation system will empower Jonesboro residents to live healthy and happy lives through **access to quality, diverse, and activated** park spaces and recreation facilities.”



# RECOMMENDATIONS & WORK PROGRAM

---

## PARKS AND RECREATION MASTER PLAN

# LEVEL OF SERVICE (PARKLAND, 2024)

---

## REGIONAL PARKS

**8.9  
ACRES**  
PER 1,000 RESIDENTS

## COMMUNITY PARKS

**1.4  
ACRES**  
PER 1,000 RESIDENTS

## NEIGHBORHOOD PARKS

**0.1  
ACRES**  
PER 1,000 RESIDENTS

# LEVEL OF SERVICE (PARKLAND, 2040 TARGET)

---

## REGIONAL PARKS

**8.0  
ACRES**  
PER 1,000 RESIDENTS

## COMMUNITY PARKS

**2.0  
ACRES**  
PER 1,000 RESIDENTS

## NEIGHBORHOOD PARKS

**1.0  
ACRES**  
PER 1,000 RESIDENTS



# LEVEL OF SERVICE (PARKLAND, 2040 TARGET)

## REGIONAL PARKS

844.5  
ACRES

## COMMUNITY PARKS

211.1  
ACRES

## NEIGHBORHOOD PARKS

105.6  
ACRES

## DEFICIT (BASED ON 2024 ACRES)

- 137.5 ACRES

- 101.9 ACRES

- 94.8 ACRES

# PARKLAND SERVICE AREA GAPS

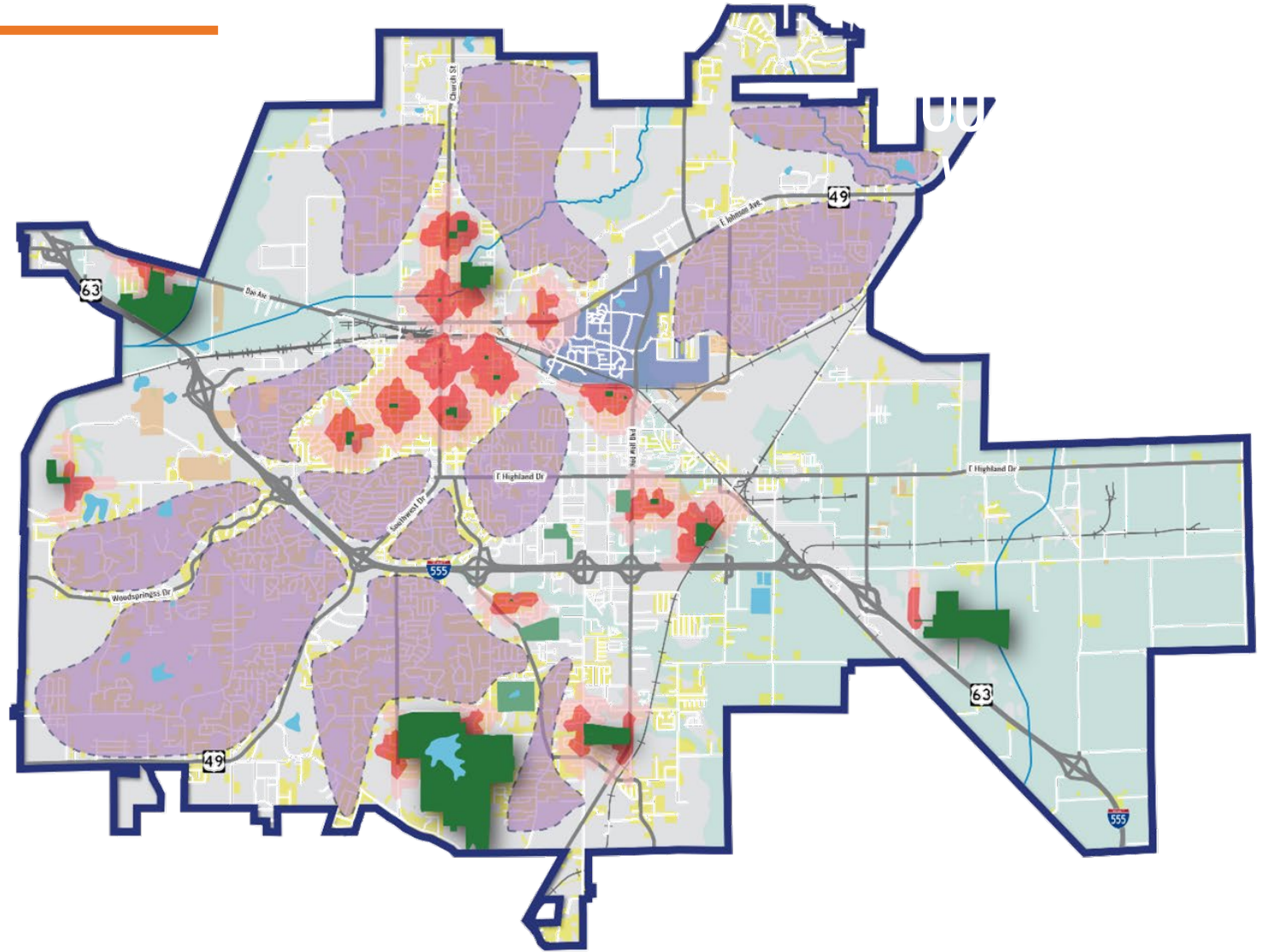
OUTSIDE THE  
WALKSHED

88%

OF JONESBORO  
RESIDENTIAL PARCELS

GAP AREAS

12



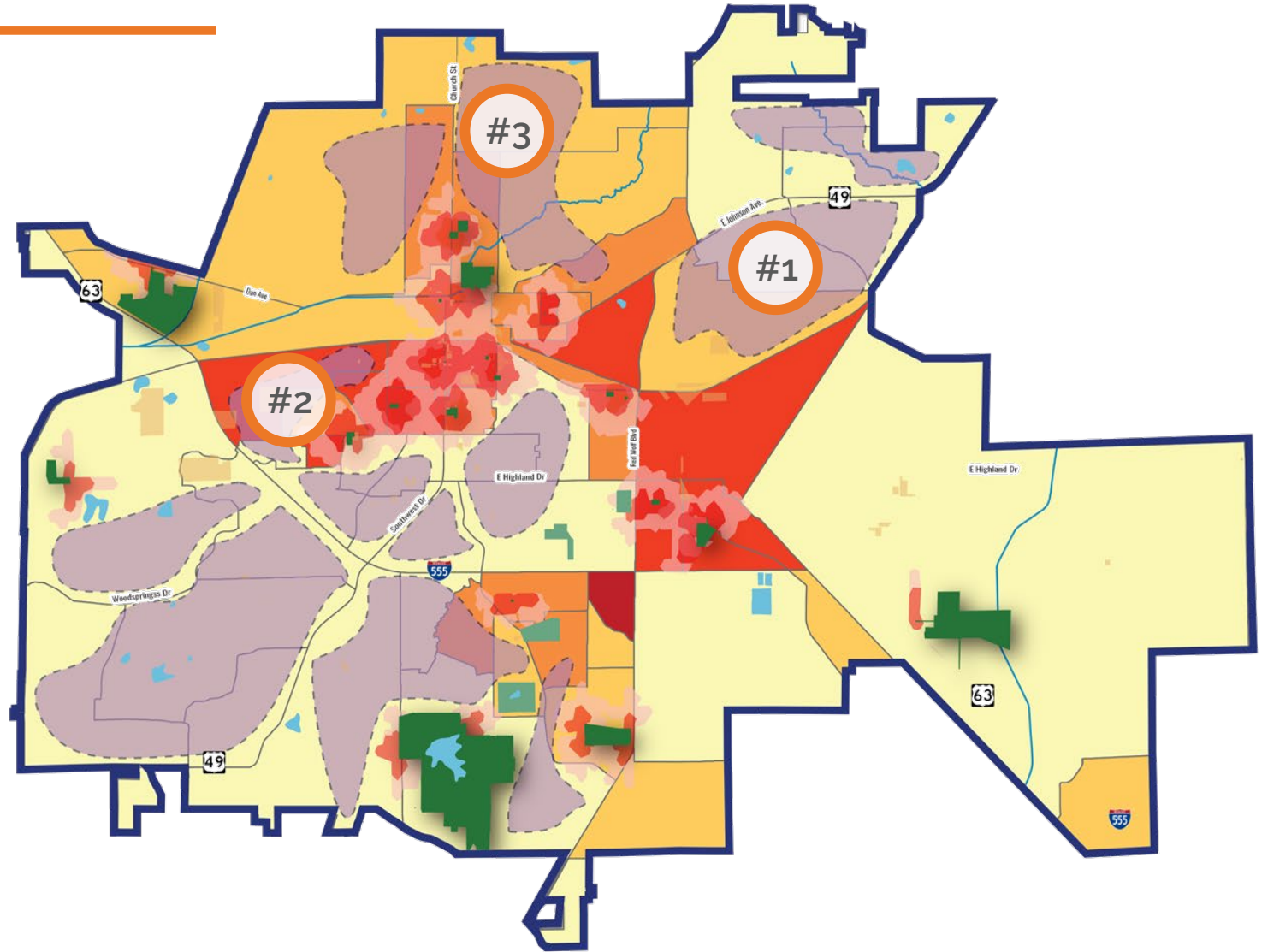


# PARKLAND SERVICE AREA PRIORITIES

## PRIORITIZATION METRICS

- Environmental justice
- Population density
- Growth rate

**A.2. Parkland Service Area Gaps.** Reduce parkland service area gaps for new neighborhood and community parks by acquiring land in high priority areas.



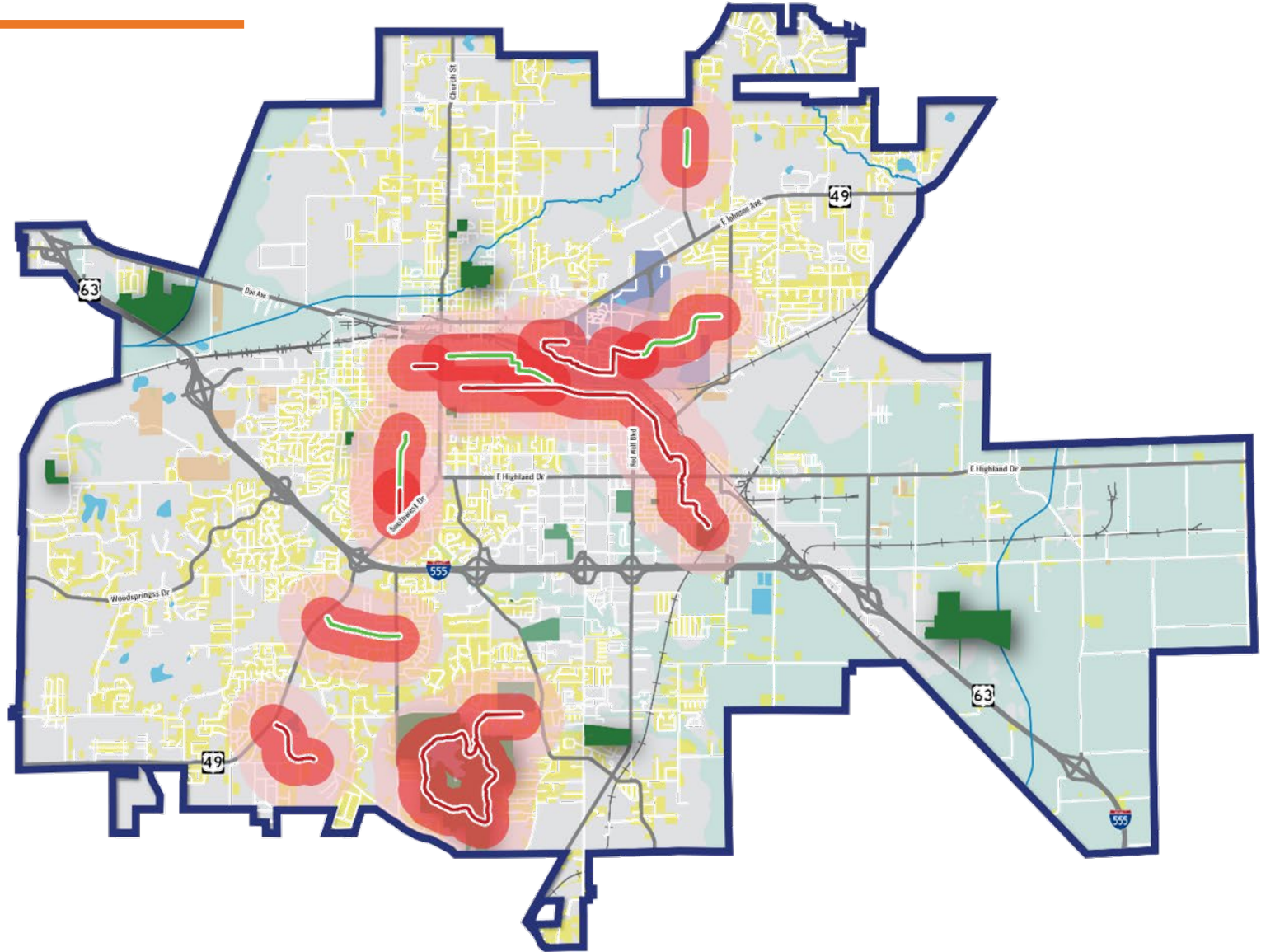
# LEVEL OF SERVICE (TRAILS)

EXISTING & FUNDED

14.7  
MILES

1/2 MILE RADIUS

26%  
OF JONESBORO  
RESIDENTIAL PARCELS

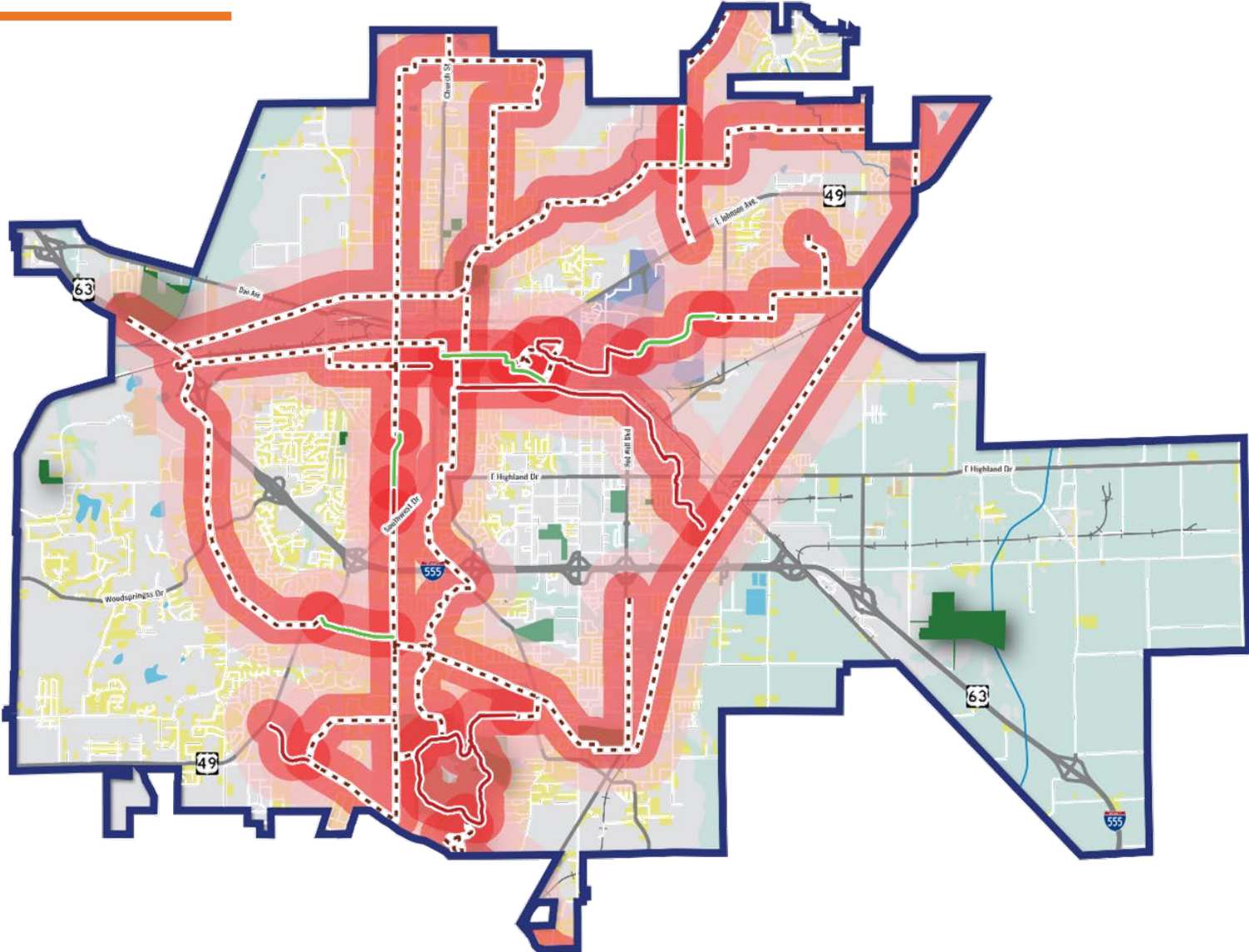




# TARGET LEVEL OF SERVICE (TRAILS)

**PLANNED**  
**79**  
TOTAL MILES

**1/2 MILE RADIUS**  
**72%**  
OF JONESBORO  
RESIDENTIAL PARCELS





# TARGET LEVEL OF SERVICE (FACILITIES)

- Target levels of service established for “common” facility types.
- Up to four (4) new community centers
- Indoor recreation center facility enhancements
- Specialized facilities:
  - Aquatics
  - Dog parks
  - Community gardens
  - Inclusive play

Facility / Amenity	Current and Funded Facilities <sup>1</sup>	Jonesboro Current LOS (per resident) <sup>2</sup>	Target LOS (per resident) <sup>3</sup>	2040 Need (total inventory) <sup>4</sup>
Baseball Fields (adult)	4	1 per 19,831	1 per 19,500	5
Baseball Fields (youth)	15	1 per 5,288	1 per 5,000	21
Multi-purpose Fields (outdoor)	9	1 per 8,814	1 per 8,300	13
Multi-purpose Fields (indoor)	2	1 per 39,662	1 per 35,000	3
Soccer Fields	24	1 per 3,305	1 per 2,900	36
Softball Fields (adult)	4	1 per 19,831	1 per 19,500	5
Softball Fields (youth)	7	1 per 11,332	1 per 11,000	10
Basketball Courts (outdoor)	10	1 per 7,923	1 per 7,000	15
Multi-purpose Courts (indoor)	19	1 per 4,175	1 per 4,100	26
Pickleball Courts	6	1 per 13,221	1 per 10,000	11
Tennis Courts	17	1 per 4,666	1 per 4,000	26
Volleyball Courts (sand)	2	1 per 39,662	1 per 40,000	3
Splash Pads	4	1 per 19,831	1 per 15,000	7
Swimming Pools (indoor & outdoor)	4	1 per 19,831	1 per 13,500	8
Community Gardens	1	1 per 79,324	1 per 20,000	5
Dog Parks	2	1 per 39,662	1 per 32,100	3
Playgrounds	57	1 per 1,392	1 per 1,300	81
Skateparks <sup>5</sup>	13,500 SF	170.2 SF per 1,000	192.7 SF per 1,000	20,330 SF
Disc Golf Courses	3	1 per 26,441	1 per 26,500	4

1. Includes existing facilities and funded facilities not yet constructed; 2. Population of 79,324, US Census Bureau (2022); 3. Targets calculated using existing facilities, NRPA averages, and Master Plan community survey results; 4. Based on projected population of 105,558; 5. Skatepark Adoption Model.

# CONDITIONS ASSESSMENTS

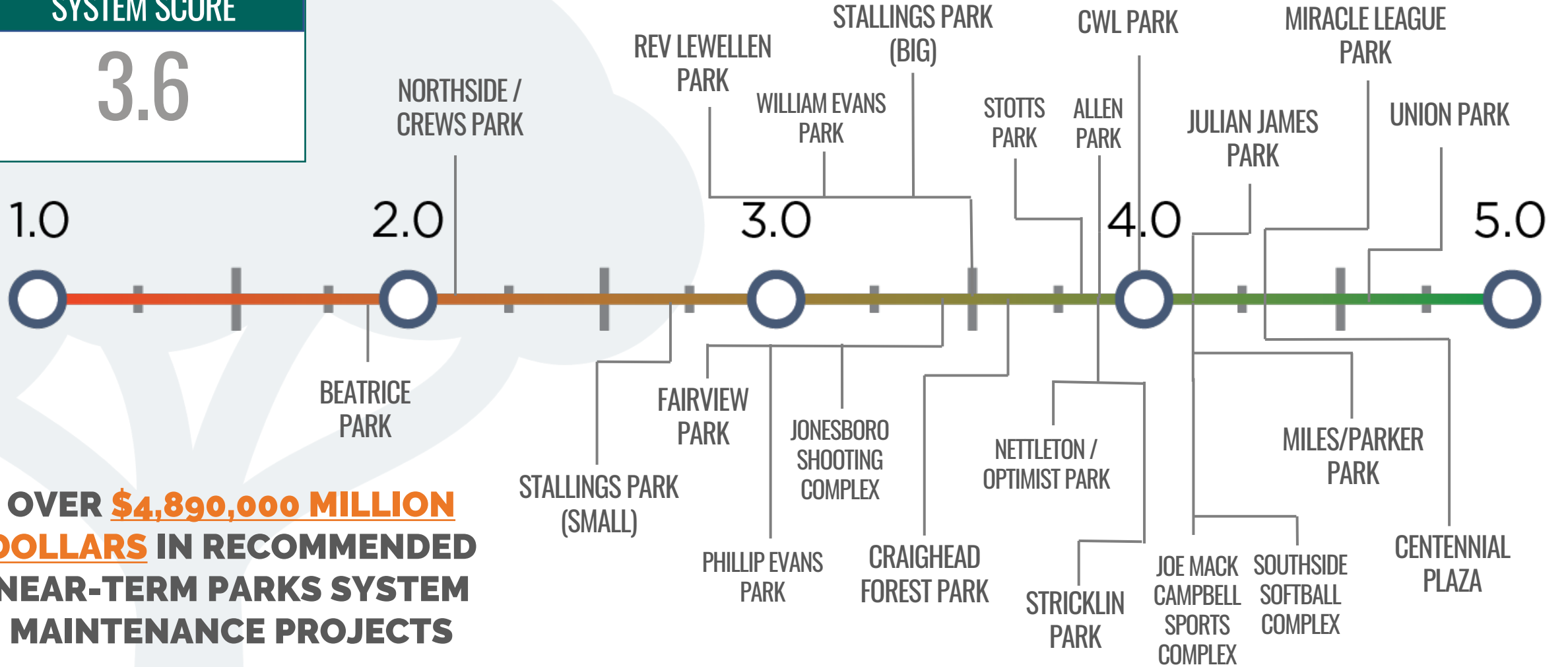
---

- Sports courts
- Sports fields
- Park pathways/trails
- Public gathering spaces
- Structured play areas
- Open play areas
- Parking
- Fencing and retaining walls
- General site facilities (ie. restrooms)
- Additional site amenities (ie. benches)
- Plantings and trees
- Turf
- Signage
- Lighting
- Accessibility



# CONDITIONS ASSESSMENTS

**SYSTEM SCORE**  
**3.6**



**OVER \$4,890,000 MILLION DOLLARS IN RECOMMENDED NEAR-TERM PARKS SYSTEM MAINTENANCE PROJECTS**



# PARKS & RECREATION WORK PROGRAM

## ARRANGEMENT

- Guiding Principles
- Strategy Type
- Timeframe

**FIFTY- EIGHT (58)**  
**TOTAL**  
**STRATEGIES/  
ACTIONS**

## OUR WORK PROGRAM

This Master Plan recommends **56 strategies** to improve the long-term community-wide value of the parks and recreation system. Strategies are organized according to four guiding principles that address the findings presented in this Master Plan: Access, Investments, Programs, and Service.

The strategies listed in our parks and recreation Work Program (pgs. 57-63) are not listed according to priority and should not deter community leaders and stakeholders from considering other future actions or initiatives intended to enhance the Jonesboro parks and recreation system. Should a future action or initiative advance one of the goals contained in this Plan then it may be pursued with as much energy as the recommendations herein. In contrast, where activities or initiatives diverge significantly from this Plan, the City should amend the plan document.

### WORK PROGRAM PARAMETERS

Our parks and recreation Work Program is organized by topic, strategy type, and timeframe, and considers potential implementation partners.

#### STRATEGY TYPE



**Investment.** Capital improvement (for inclusion in Capital Improvement Plan) or general fund expenditures.

**Operations.** New or altered programs, staffing, or

operational procedures.

**Policy.** Official procedures or policies used to make City decisions.

**Regulation.** Council approved regulations used to direct growth or additional actions in the City.

**Study.** Additional examination required to determine best result.

#### TIMEFRAME



**Near-term.** Strategies which should be initiated in the next one to two years. These are often the City's top priorities.

**Mid-Term.** Strategies that may be initiated within the next

three to five years. Initiation may be dependent on other strategies.

**Long-Term.** Strategies to be implemented in the long term (5+ years) or may be reevaluated in future planning initiatives.

**Ongoing.** Strategies that may apply to the entire planning period, or may occur on a reoccurring basis.

#### PARTNERSHIPS



One or more entities may participate in implementing an individual action. This may include City staff, non-profit agencies, or

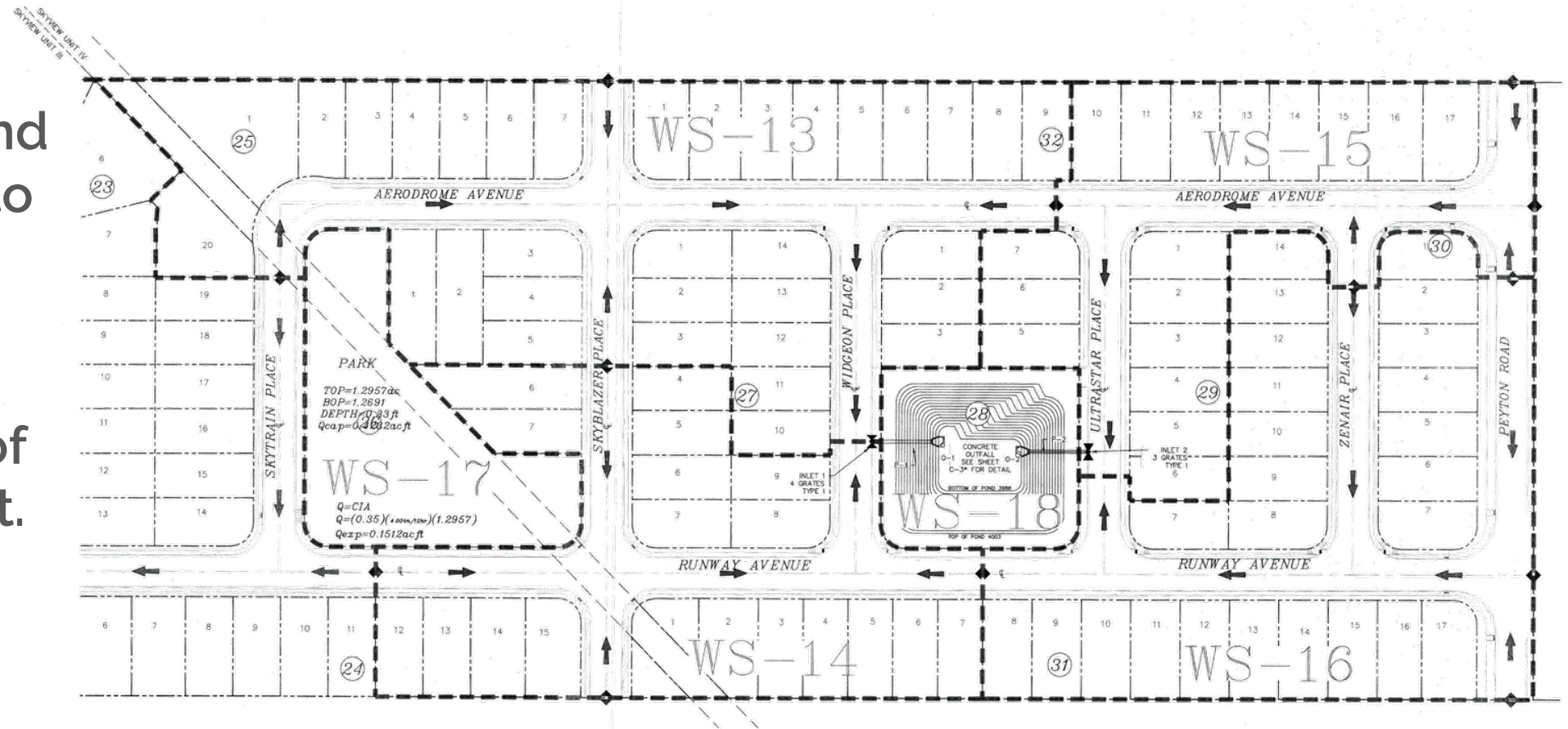
other non-municipal group or entities. Non-municipal partnering agencies (public or private) may lead implementation or may support the identified implementing agency. Identified partnership may change as additional organizations form or as plan goals change.

# GUIDING PRINCIPLE: ACCESS

We will promote equitable access and connectivity to parks and recreation spaces in Jonesboro.

## 14 STRATEGIES/ACTIONS KEY RECOMMENDATION:

**A.11. Parkland Dedication.** Amend municipal codes to require the dedication and improvement of parkland as part of new development.





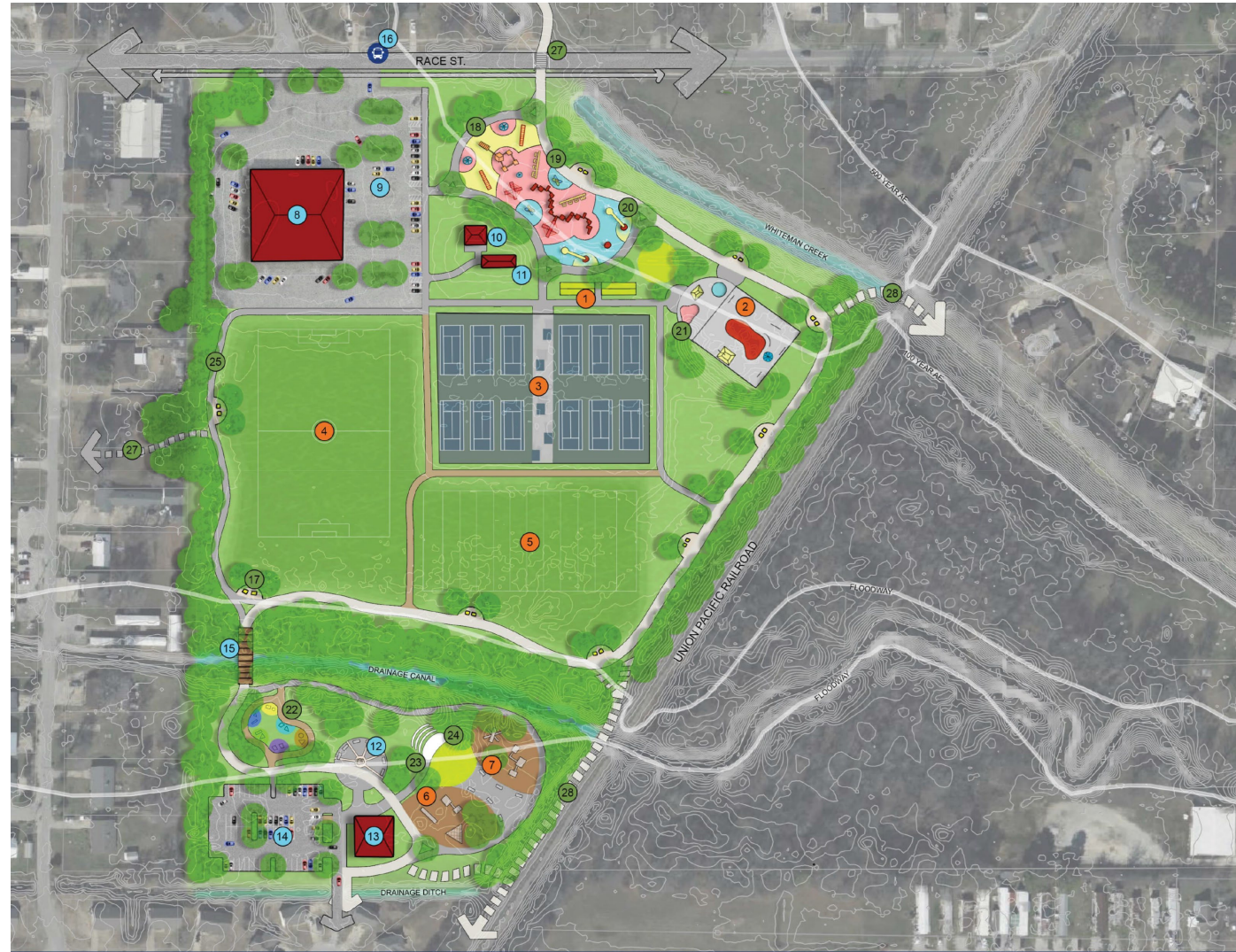
# GUIDING PRINCIPLE: INVESTMENT

We will invest in safe and attractive amenities and facilities for residents to enjoy.

## 12 STRATEGIES/ACTIONS KEY RECOMMENDATION:

### 1.5. Conceptual Park Plans.

Prepare conceptual site and operational plans for the development or redevelopment of select parks to take advantage of grant or other funding opportunities.



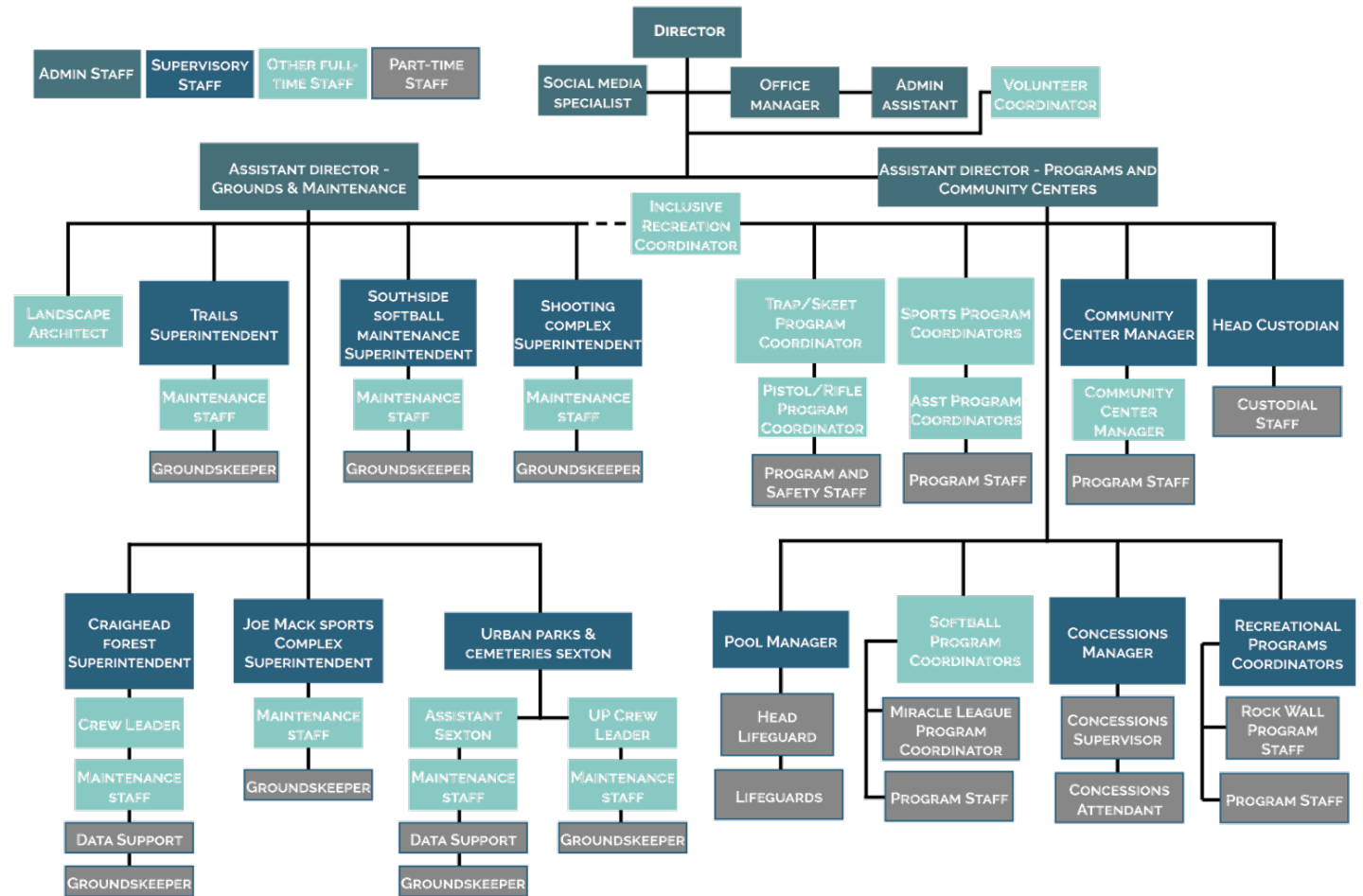


# GUIDING PRINCIPLE: SERVICES

We will provide superior services through updating and implementing our administrative policies and procedures.

## 16 STRATEGIES/ACTIONS KEY RECOMMENDATION:

**S.1. Department Restructuring.** Reorganize the various parks and recreation divisions under a consolidated organizational structure managed by assistant directors for operations and programming.



# GUIDING PRINCIPLE: SERVICES

We will provide superior services through updating and implementing our administrative policies and procedures.

## 16 STRATEGIES/ACTIONS KEY RECOMMENDATION:

### S.10. Asset Management Plan.

Conduct a comprehensive inventory of parks system assets within some or all municipal park properties and prepare a digitized asset management plan to document to pro-actively budget for amenity upkeep or replacement prior to advanced deterioration.

**PARK CONDITION ASSESSMENT**

Craighead Forest Park  
(PARK NAME)  
Ward 4  
(COUNCIL Ward)

Regional Park  
(PARK CLASSIFICATION)  
GENERAL COMMENTS:  
roads are poorly maintained, popular site, fence su

Jonesboro Park Condition Assessment

**PARK CONDITION ASSESSMENT**

Craighead Forest Park  
(PARK NAME)  
Ward 4  
(COUNCIL Ward)

Regional Park  
(PARK CLASSIFICATION)  
GENERAL COMMENTS:

**SPORT COURTS**

- 5 Great condition, surface is in good condition and nets are stable, level and in good repair
- 4 Good condition, surface and nets beginning to require maintenance with minor repairs needed
- 3 Moderate condition, surface and nets require moderate maintenance or replacement
- 2 Poor condition, unsafe surface and nets or hardware that require replacement/resurfacing
- 1 Very poor condition, complete reconstruction needed
- 0 Non-existent or not-applicable.

COMMENTS: 0

**SPORT FIELDS**

- 5 Great condition, surface is in good condition, fencing and nets are in good repair
- 4 Good condition, surface, fencing and nets beginning to require minor repairs
- 3 Moderate condition, surface, fencing and nets require routine maintenance or replacement
- 2 Poor condition, unsafe surface, fencing and nets requires replacement/resurfacing
- 1 Very poor condition, complete replacement needed
- 0 Non-existent or not-applicable.

COMMENTS: 4

**PARK PATHWAYS | TRAILS**

- 5 Great condition, surface is in good condition and is ADA accessible requiring no maintenance.
- 4 Good condition, surface beginning to crack and heave with minor repairs needed or minimal washout.
- 3 Moderate condition, surface requires moderate maintenance with visible safety concerns
- 2 Poor condition, unsafe surface that requires replacement or reconstruction and/or re-grading or re-routing.
- 1 Very poor condition, ADA access is limited or non-existent and/or complete reconstruction needed
- 0 Non-existent or not-applicable.

COMMENTS: 4 - loop trails are good quality. A few shifts/bumps from tree root growth.

**PUBLIC GATHERING SPACES**

- 5 Great condition, adequate spaces available, shade provided, and in good condition with no repairs needed.
- 4 Good condition, sufficient spaces provided with slight cosmetic repairs needed
- 3 Moderate condition, marginal spaces provided with some replacement or minor repairs needed.
- 2 Poor condition, little space or amenities provided and/or major repairs needed
- 1 Very poor condition, no spaces or amenities provided or complete replacement is necessary
- 0 Non-existent or not-applicable.

COMMENTS: 3 - Many shelters need maintenance/repairs. Sufficient spaces to rent/use.

Jonesboro Park Condition Assessment

half  
Page 2 of 5



# ADDITIONAL PRIORITIES

## PARKS SYSTEM PRIORITIES (PAGE 56)

- Aquatics Facilities  
(2 strategies)
- Walkshed Enhancements/Trails  
(4 strategies)
- Recreational Programming  
(4 strategies)
- Inclusive Recreation  
(6 strategies & Health Accelerator Plan)

### OUR PARKS SYSTEM PRIORITIES

All the strategies listed in Jonesboro's parks and recreation Work Program are important. None are ranked by priority, although the Work Program does include suggested time frames for initiation. Nonetheless, Jonesboro must make choices when determining where to focus its collective energy when implementing this Plan. To focus the City's efforts, the following topics have been identified as parks and recreation priorities.

#### TOPIC

**INDOOR SPORTS COMPLEX.** Continue design and construction of the municipal indoor sports complex to increase the City's sport court and athletic field levels of service and attract regional sporting events.

**PARKLAND LEVEL OF SERVICE/SERVICE LEVEL GAPS.** Utilize the acreage and access standards identified in this Master Plan as a guide for minimum city-wide parkland levels of service (pg. 22).

**AQUATICS FACILITIES.** Increase access to aquatic recreation through the phased renovation/construction of competitive and recreational pools, and splash pads/spray grounds.

**DEPARTMENT RESTRUCTURING.** Optimize recreational service delivery through re-organization of the Parks and Recreation Department under distinct operations and programming divisions, and supported by the addition of other specialist staff.

**TRAILS NETWORK.** Improve access to recreation, fitness, and transportation options throughout Jonesboro through completion of the planned city-wide trails network and the construction of a regional trail connecting Jonesboro with other Northeast Arkansas communities.

**ASSET MANAGEMENT.** Implement standardized park maintenance policies, programs, and maintenance schedules based on a digital asset management inventory that anticipates facility life-cycles.

**WALKSHED ENHANCEMENTS.** Invest in improvements identified in the Jonesboro Health Accelerator Plan to enhance pedestrian and bicycle access to parks from surrounding neighborhoods.

**RECREATIONAL PROGRAMMING.** Expand city-sponsored or facilitated recreational programming and events to fill gaps in community need and maximize the use of municipal facilities.

**INCLUSIVE RECREATION.** Increase access to adaptive and inclusive recreational facilities and programming across the municipal parks system.

**ACCELERATOR PARKS.** Fund large-scale renovation of Allen/Landsbrook Park and Northside/Crews Park to serve as renowned "hubs" of inclusive recreation opportunities.

#### RESOURCES<sup>1</sup>

**Strategies:** (N/A, Initiated)  
**Information:** Appendix C

**Strategies:** A1, A2, A10, A13  
**Information:** Appendix B

**Strategies:** I2, P9  
**Information:** Appendix A, B, C

**Strategies:** P2, S1, S2, S5, S7, S9  
**Information:** Appendix E

**Strategies:** A3, A4, A12  
**Information:** Appendix B

**Strategies:** I10, I11, S10, S11, S12, S13  
**Information:** Appendix E

**Strategies:** A10  
**Information:** Jonesboro Health Accelerator Plan

**Strategies:** P1 - P14  
**Information:** Appendix A, D

**Strategies:** I4, I7, P11, P12, S2  
**Information:** Jonesboro Health Accelerator Plan

**Strategies:** I5  
**Information:** Jonesboro Health Accelerator Plan

1. "Strategies" located on pages 57-63; "Resources" described on page 64.

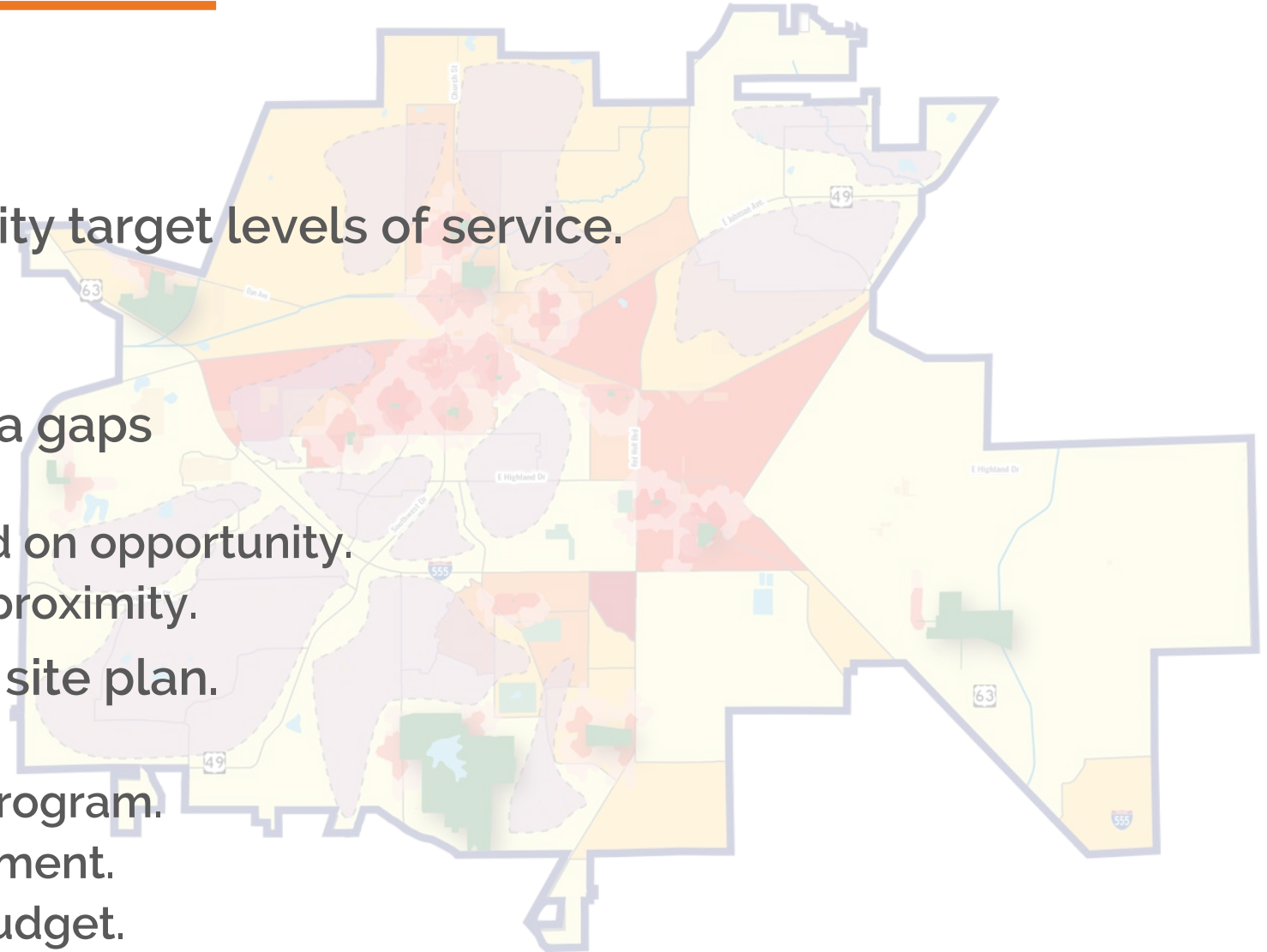


# CLOSING PARKLAND SERVICE AREA GAPS

## SYSTEMS-LEVEL PLAN

### PLAN GUIDANCE:

- **Actions A.1 & I.1:** Parkland/facility target levels of service.
  - Acreage targets by park type.
  - Common recreational facilities.
- **Action A.2:** Parkland service area gaps identified/prioritized.
  - Park acquisition/location based on opportunity.
  - Prioritize pedestrian walkshed proximity.
- **Action I.12:** Prepare conceptual site plan.
  - Solicit public participation.
  - Create a cohesive park space program.
  - Cost estimates/phase development.
  - Operations and maintenance budget.





# HEALTH ACCELERATOR PLAN

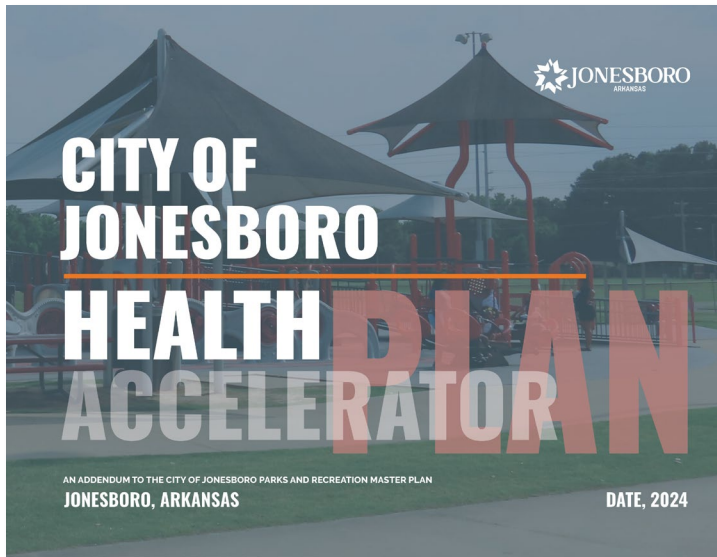
---

## FINDINGS AND RECOMMENDATIONS



# REPORT COMPONENTS

- Walkshed Assessment
- Access Assessment
- Amenities Assessment
- Parks System Investments
- **Accelerator Parks**



To better understand the accessibility and inclusiveness of the Jonesboro parks system, three key assessments were conducted within each municipal park property and the surrounding land. Each assessment examined existing park conditions and identified a list of projects that would improve the conditions at each park space. The methods included a walkshed assessment, access assessment, and amenities assessment.

## WALKSHED ASSESSMENT



The project team reviewed the area within a quarter-mile of all park boundaries to assess the existing and potential walkability to the park space from surrounding neighborhoods. A list of projects was identified within each walkshed that will improve access to and from each park. Projects could include sidewalk improvements, sidewalk additions, roadway crossings, traffic signals, trail connections, and other infrastructure improvements.

## ACCESS ASSESSMENT



The project team reviewed each park regarding the park's compliance with ADA accessibility standards and accessibility for the selected populations. This included a review of sidewalks, pathways, parking, signage, and other outdoor amenities. A list of improvements were identified that would bring each park into compliance, including projects such as sidewalk improvement, accessible ramps, and parking lot improvements.

## AMENITIES ASSESSMENT



The project team examined potential amenities to be included in future park improvements and park expansions. This assessment utilizes public surveys and Leadership Team site visits to review best practices and community demand. In addition to amenities, this assessment includes potential programming expansions to provide inclusive and accessible recreation opportunities for the Plan's selected populations.



# INVESTMENT PROGRAM

## PROJECT TYPES

- Walkshed enhancements
- Accessibility improvements (On-site)
- Adaptive recreation amenities

## PROJECT SCOPES

- Shovel-ready
- Capital
- Park-specific
- System-wide

### ADAPTIVE PROJECTS (SHOVEL READY)

The adaptive projects (shovel ready) listed below and on the facing page are estimated to cost under \$50,000 (2024). The projects are listed in order of priority based on the scoring methodology described on pages 23 and 25. A full list of shovel ready project is on file with the City of Jonesboro.

#### ADAPTIVE PROJECTS (SHOVEL READY)

Project ID	Project Name	Park	Item	Unit	Quantity	Unit Cost	Cost
<b>Walkshed Projects</b>							
W-SP-1	Mathews Avenue Crosswalk	Stallings Park (Big)	Concrete Walk	SY	43	\$90	\$3,830
			Signs	SF	19	\$30	\$570
			Striping	LF	100	\$6	\$600
			<b>Total project cost (with 20 percent contingency and 15 percent for design and engineering)</b>				
W-NC-2	Patrick Street Crosswalks	Northside / Crews Park	Concrete Walk	SY	44	\$90	\$3,960
			Striping	LF	173	\$6	\$1,040
			<b>Total project cost (with 20 percent contingency and 15 percent for design and engineering)</b>				
W-OP-1	Nettleton Avenue Crosswalk	Nettleton / Optimist Park	Concrete Walk	SY	43	\$90	\$3,830
			Signs	SF	19	\$30	\$570
			Striping	LF	100	\$6	\$600
			<b>Total project cost (with 20 percent contingency and 15 percent for design and engineering)</b>				
			Concrete Walk	SY	43	\$90	\$3,830

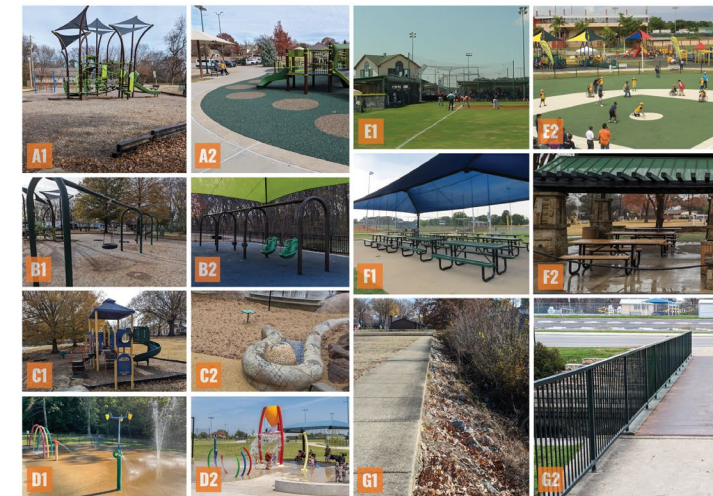
### ADAPTIVE PROJECTS (SHOVEL READY)

Project ID	Project Name	Park	Item	Unit	Quantity	Unit Cost	Cost
<b>Access Projects</b>							
A-SPS-1	Accessible Pathways	Stallings Park (Small)	Concrete Walk	LF	120	\$42	\$5,040
		<b>Total project cost (with 20 percent contingency and 15 percent for design and engineering)</b>					
A-JM-2	Replace Crossing	Joe Mack Sports Complex	Curb Ramps	EA	2	\$1,000	\$2,000
			Striping	LF	60	\$1.25	\$75
			Rapid Flashing Beacon	EA	2	\$1,500	\$3,000
			<b>Total project cost (with 20 percent contingency and 15 percent for design and engineering)</b>				
A-RL-1	Playground Ramp Connection	Reverend Leavelle Park	Concrete Walk	LF	20	\$42	\$840
<b>Total project cost (with 20 percent contingency and 15 percent for design and engineering)</b>						<b>\$1,134</b>	
A-OP-2	ADA Ramps	Nettleton / Optimist Park	Concrete Ramps	EA	2	\$1,000	\$2,000
<b>Total project cost (with 20 percent contingency and 15 percent for design and engineering)</b>						<b>\$2,700</b>	
A-RL-1	Playground Ramp Connection	Reverend Leavelle Park	Concrete Walk	LF	20	\$42	\$840
		<b>Total project cost (with 20 percent contingency and 15 percent for design and engineering)</b>					
		Southside Softball Complex	Detect. Warning Strips	EA	4	\$300	\$1,200
<b>Total project cost (with 20 percent contingency and 15 percent for design and engineering)</b>							<b>\$5,040</b>
						\$42	\$840
						\$1,000	\$1,000
						\$1,350	\$1,350

### AMENITY AUGMENTATION PROJECTS

The amenity projects detailed below address universal issues found throughout the Jonesboro park system and should be a priority for park improvement efforts. Many of these projects augment existing amenities and facilities with alternatives that promote inclusion and universal accessibility. The projects promote the addition of new inclusive amenities along with expanding existing amenities, such as sensory play, aquatic elements, and adaptable sports fields. The images on page 50 present existing conditions and examples of alternatives or facility additions. Unlike the shovel ready and capital adaptive projects, these amenity augmentation projects can (and should) be distributed throughout the parks system to provide a broader suite of recreational opportunities for individuals that are part of this Plan's selected (focus) populations.

Amenity Category	Description	Project Type	Location	Cost
A. Surface Treatments	Replacing non-ADA compliant surfaces such as mulch or damaged concrete with accessible surfaces such as rubberized surfaces or bonded rubber mulch. (See A1 and A2)	Replace Playground Surfaces	All playgrounds	\$50/SF
B. Adaptable Play Equipment	Replacing non-ADA compliant equipment and introduction inclusive play equipment to provide alternate ways to play. (See B1 and B2)	Replace Play Equipment	Playgrounds (dispersed)	~\$2,000/EA
C. Sensory Play	Introducing inclusive play equipment that stimulates the five senses. (See C1 and C2)	Provide Sensory Play Equipment	Playgrounds (dispersed)	~\$2,000/EA
D. Aquatic Elements	Renovating existing aquatic play areas to provide inclusive equipment and alternative play. (See D1 and D2)	Provide Accessible Water-Play Equipment	All applicable parks	Varies
E. Adaptable Sports Fields	Replacing/introducing sports fields that accommodate varying ability levels. (See E1 and E2)	Replace Fields with Accessible Surfaces	All sports complexes	~100,000/EA
F. Accessible Facilities	Providing additional tools and equipment to existing facilities to include all potential users. (See F1 and F2)	Introduce Accessible Furnishings	All park facilities	Varies
G. Accessible Pathways	Replacing non-ADA compliant pathways with accessible pathways, such as concrete ramps with handrails, to provide direct routes to all park amenities. (See G1 and G2)	Repair / Regrade Pathways	All routes to park amenities/facilities	~\$40/SF



# PARK PROJECT PRIORITIES

## ALLEN / LANDSBROOK PARK

Allen / Landsbrook Park is located at 3609 Race Street. The park is 23.5 acres and is bisected into north and south sections by a drainage ditch. The north side of this community park is more activated, featuring the Allen Park Community Center, tennis courts, a splash pad, bocce ball courts, a skate park, playgrounds, and a walking trail. The south side (Landsbrook) contains a basketball court, open play areas, soccer fields, and play equipment.

### WALKSHED ASSESSMENT

The walkshed around Allen/Landsbrook Park is connected by sidewalks on the northside of Race Street and the Turtle Creek Track (A) multi-purpose trail on the northeast side. The Landsbrook neighborhood to the south is connected via sidewalks, but there is no sidewalk connection to the east or west. Many existing sidewalks in the northern neighborhoods are generally in a state of disrepair. The existing infrastructure around the park does not meet ADA standards. It is usable, but not comfortable.

### ACCESSIBILITY ASSESSMENT

The park has sufficient ADA parking and adequate signage. Play structures within the park are in good condition, but lack adaptive inclusive play elements. The use of mulch for the surface creates a barrier for individuals who use a wheelchair (B). The splash pad provides good accessibility and is connected by a paved pathway (C). The athletic fields are not accessible, but the tennis courts are in good condition and accessible. There is no pathway to the equipment room (D) and restroom facilities are accessible. Furnishing on the site, such as picnic tables and benches, are in good condition with accessible options available.

Allen / Landsbrook Park has been identified as an Accelerator Park. The conceptual redesign can be viewed on page 95.



— Boundary      - - - Paved Path  
 (W-AP) Walkshed Project    (A-AP) Access Project

### ALLEN / LANDSBROOK PARK, PRIORITY PROJECTS<sup>1</sup>

ID <sup>2</sup>	Project	Item	Unit <sup>3</sup>	Quantity	Unit Cost	Cost
<b>Walkshed Projects</b>						
W-AP-1	Multi-use trail	Concrete Walk	SY	1,500	\$90	\$135,000
		Total project cost (with 20 percent contingency and 15 percent for design and engineering)				
W-AP-2	Race street crosswalk	Concrete Walk	SY	40	\$90	\$3,600
		Signs	EA	19	\$30	\$570
		Striping	LF	88	\$6	\$530
		Bus Stop Shelter	EA	1	\$12,300	\$12,300
Total project cost (with 20 percent contingency and 15 percent for design and engineering)					\$22,950	
W-AP-3	Trail Crossing Upgrade	Rapid Flashing Beacon	EA	2	\$22,250	\$44,500
		Total project cost (with 20 percent contingency and 15 percent for design and engineering)				
<b>Access Projects</b>						
A-AP-1	Adaptive Play Equipment	Equipment	EA	1	\$12,000	\$12,000
		Total project cost (with 20 percent contingency and 15 percent for design and engineering)				
A-AP-2	Pedestrian Bridge	Pedestrian Bridge	LS	1	\$500,000	\$500,000
		Total project cost (with 20 percent contingency and 15 percent for design and engineering)				

1. Exclusive of full-scale redesign as an Accelerator Park (pg. 95).  
 2. Project ID corresponds to project locations on the map and projects on files with the City of Jonesboro.  
 3. SF: square feet; SY: square yard; EA: each; LS: lump sum; LF: linear foot; AC: acre

A complete list of projects is on file with the City of Jonesboro. Costs are for order of magnitude estimating purposes only and are subject to refinement and verification. In addition to the identified walkshed and access projects, each park is subject to amenity augmentation (see page 49).



# ACCELERATOR PARKS

## ACCELERATOR PARK CONCEPT - NORTHSIDE / CREWS PARK

Northside Park and Crews Park are ready for full-scale renovation to realize their full potential. New baseball fields could replace the existing fields to provide more space and accessible facilities. Key points of addition could include a Miracle League Baseball Field, a 9-hole accessible disc golf course, a new community center, among other outdoor amenities. These additions aim to make Northside Park an inclusive hub similar to Miracle League Park and Allen / Landsbrook Park that can better serve the city. **The exhibit on the facing page identifies possible inclusive play and programming opportunities within a re-designed Northside and Crews Park.**

A redesigned park might include a system of accessible trails and pathways that connect to all amenities. A new splash pad, sensory garden, adaptable playgrounds, and disc golf course all incorporate ADA compliant walkways and trails to provide access to activity in the park. Open lawn areas, an accessible amphitheater, and the community center provide potential areas for inclusive programs and educational spaces for the use of Success Achievement Academy. The entire concept aims to enhance the parks existing features while also creating an inclusive hub of activity for the community's benefit.



Images correspond with the concepts discussed on the facing page.



### INCLUSIVE OPPORTUNITIES

Northside/Crews Park has the unique opportunity to become a pioneering inclusive, adaptive, and accessible facility.

**ADAPTABLE/AQUATIC PLAY.** Areas for adaptable play, including natural, interactive, and aquatic play (A). Splash pads can be placed adjacent to foster inclusivity (C).

**ACCESSIBLE ROUTES.** Rubberized surfaces could be introduced to provide an additional accessibility to nature (B). Area for a fully accessible 9-hole disc golf course (E).

**SENSORY/COMMUNITY GARDEN.** A sensory garden with plenty of room and the latest features and can be tucked into a quiet wooded area (D). A community garden will foster inclusivity and provide another sensory space for users (G).

**INTERACTIVE ELEMENTS.** Placing the amphitheater in conjunction with the play areas, increases inclusivity and provides a flex space opportunity to the school to the south to gather and activate (F).

**ADAPTABLE ACCESS.** Adaptable sports fields and adaptable access to water provide more previously unrealized inclusivity (H, I).



# PARK PLANNING INITIATIVES

---

# IMPLEMENTATION

Jonesboro City Council

May 7, 2024

# PLAN IMPLEMENTATION

---

## PARKS AND RECREATION MASTER PLAN

- Annual progress reports
- Five-year updates
- Monitoring includes the Health Accelerator Plan

## HEALTH ACCELERATOR PLAN

- Leadership Team
- Performance metrics





# PARK PLANNING INITIATIVES

---

## QUESTIONS

Jonesboro City Council

May 7, 2024