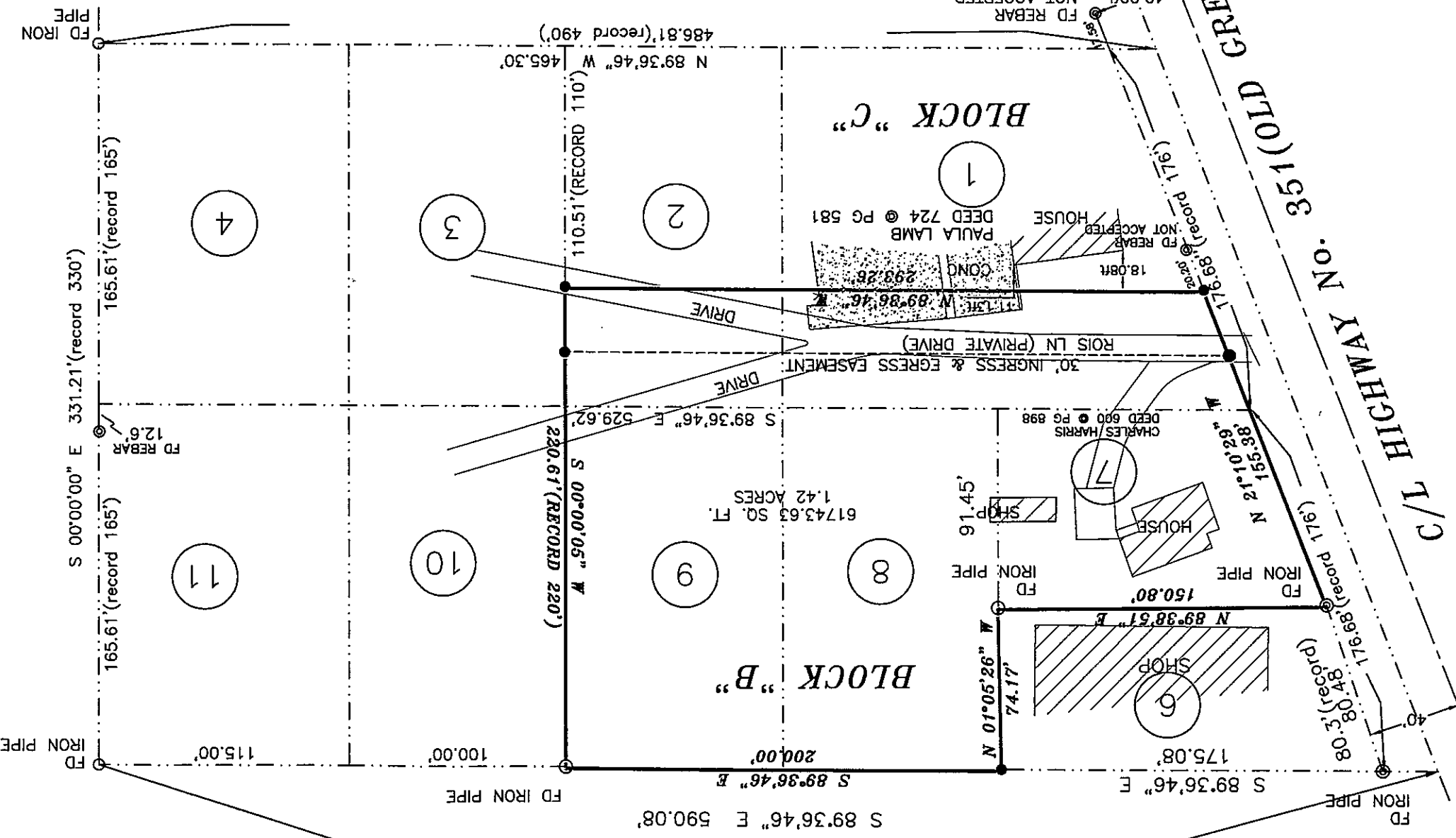


*Charles Harris*

*Darryl McCallister*

*Herbert C. Hime*

VUNCANNON'S REPLAT (PLAT CABINET "C" @ PG 67)  
615.45'(RECORD 615)



**DESCRIPTION:**  
 LOTS 7, 8 AND 9 IN BLOCK "B" AND THE NORTH 55 FEET OF LOTS 1 AND 2 IN BLOCK "C" IN F.W. CALDWELL SUBDIVISION OF A PART OF THE SOUTHWEST QUARTER OF THE NORTHWEST QUARTER OF SECTION 10, TOWNSHIP 14 NORTH, RANGE 4 EAST, AND BEING SUBJECT TO EASEMENT FOR INGRESS AND EGRESS OF THE SOUTH 30' FEET OF THE NORTH 55 FEET OF LOTS 1 AND 2 IN BLOCK "C" OF F.W. CALDWELL SUBDIVISION, JONESBORO, ARKANSAS.

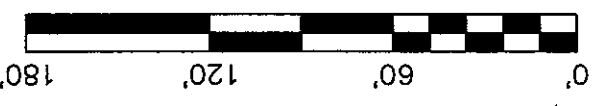
**SURVEYOR'S CERTIFICATION:**  
 THIS IS TO CERTIFY I HAVE ON THIS DATE SURVEYED THE ABOVE DESCRIBED PROPERTY IN ACCORDANCE WITH MONUMENTS FOUND AND THIS PLAT CONFORMS TO THAT SURVEYED.

PMB #283, 2704 SO. CULBERHOUSE STE. 7,  
 JONESBORO, ARKANSAS

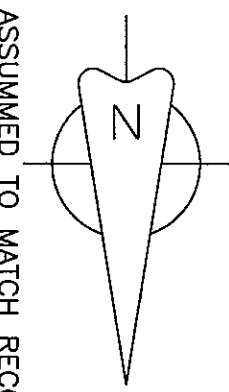
**H&S HIME PROFESSIONAL SURVEYING SERVICES**

These standard symbols will be found in the drawing.

- FOUND CORNER AS NOTED
- SET 1/2" REBAR W/ CAP
- ⊙ FD COTTON PICKER SPINDLE
- ▲ HIGHWAY RIGHT OF WAY MARKER
- ⊙ FOUND REBAR
- △ CALCULATED CORNER
- F — E — FENCE LINE
- X — X — ELECTRIC
- ⊙ SET PK NAIL
- ⊙ POWER POLE



**LEGEND**



ASSUMED TO MATCH RECORD PLAT

**PLAT OF SURVEY**

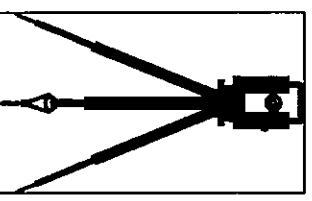
drawn: HH  
 date: 4-06-2010  
 scale: 1"=60'  
 client: CHARLES HARRIS

LOTS 7, 8 & 9 IN BLOCK "B" AND THE NORTH 55' OF LOTS 1 & 2 IN BLOCK "C" OF F.W. CALDWELL'S SUBDIVISION OF PART OF THE SW 1/4, NW 1/4, SECTION 10, TOWNSHIP 14 NORTH, RANGE 4 EAST, CRAIGHHEAD COUNTY, ARKANSAS.

**H & S HIME PROFESSIONAL SURVEYING SERVICES**

PMB # 283  
 2704 SOUTH CULBERHOUSE SUITE "L"  
 JONESBORO, ARKANSAS 72401

PHONE: 870 972 1288  
 FAX: 870 972 1011  
 E-MAIL: hchime@cox-internet.com



HERBERT C. HIME

REGISTERED PROFESSIONAL LAND SURVEYOR

STATE OF ARKANSAS

PLS # 1142