

Vector Disease Control, Inc.

Mosquito Surveillance and Control Report

for the

City of Jonesboro

September/October 2018

Year End 2018

2221 N. Church St. Jonesboro, AR 72401

T-870.933.6939 F- 870.933.0122

www.vdci.net





City of Jonesboro Activity Report

September/October 2018

Vector Disease Control, Inc. (VDCI) provides a proven, scientific approach to mosquito control for the city of Jonesboro. VDCI's operations include larval and adult mosquito surveillance followed by the application of larvicides and adulticides. In addition, our office responds to service requests from the public.

Mosquito Surveillance

VDCI has utilized a total of (13) New Jersey light traps placed in residential and recreational areas throughout Jonesboro during this reporting period. These traps collected an average of 5.6 mosquitoes per trap night (300 total mosquitoes) during this time. There have been a total of 3 mosquito species collected, with *Anopheles quadrimaculatus* being the most predominant species.

Larval Control Activity

Permanent water, flood water, artificial containers, and drainage system sites are inspected for larval mosquito breeding on a regular basis. In total, 25 sites were inspected for larvae, 5 sites were located containing larvae and as a result 110 oz of Aquabac 200 larvacide was used. mosquito breeding sites. Additionally, VDCI is continuing to eliminate breeding habitats for artificial container mosquitoes by targeting bird baths, buckets, tires, etc.



Adult Mosquito Control Activity

In response to community events and mosquito surveillance data, VDCI applied the adulticide Kontrol 30-30 on 33 truck nights for this reporting period. All adulticide ULV applications were made with truck-mounted ULV units equipped with GPS-enabled monitors. During this report period, a total of 952.0 spray miles (33,572 acres) were treated with a total of 266.4 gallons of adulticide in residential and recreational areas. In addition to routine truck spraying, VDCI has responded to 24 service requests and adulticided for all parks and any special events, including softball and soccer tournaments, throughout the month.

Summary

During this reporting period, VDCI has continued to provide exceptional control of larval and adult mosquito populations. VDCI will remain diligent in our surveillance and control activities to prevent a significant increase in the mosquito population. Based on recent weather conditions VDCI expects the trend of routine adulticiding and larviciding to continue. However, if VDCI detects a significant rise in the mosquito population we will increase larval and adult control. As always, VDCI welcomes residents with any mosquito-related questions or concerns to contact VDCI's Jonesboro office directly at 870.933.6939.

We appreciate the opportunity to provide the abatement program for the city of Jonesboro and look forward to serving the city in the future.



Year-end Totals: 2018

Adulticiding-

Total chemical sprayed: 1,259.5 gallons

Total nights sprayed: 134

Total miles treated: 7,157.5 (actual miles)

Total acres treated: 212,685.7

Service Request Total: 253

Larviciding-

Total larvicide used: 401.3 ounces

Total inspection sites treated: 279

Light Trap Surveillance-

Total mosquitoes 34.1

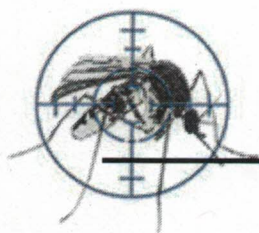
Total species collected: 4

Aerial

Aerial Sprays-8

Total Gallons: 420.5

Total Acres: 72,753



Adult Mosquito Surveillance Report

Start Date: 9/1/2018

End Date: 10/31/2018

Jonesboro

Trap Location	Date Trap Set	Trap Type	Mosquito Species	No. Collected
Treatment Area 0 Collections				
Trap Site 5	7/18/2018	NJ Light Trap	<i>Anopheles quadrimaculatus</i>	33
				Trap Total 33 (Avg. 33)
Treatment Area 1 Collections				
Trap Site 1	5/29/2018	NJ Light Trap	<i>Aedes albopictus</i>	11
			<i>Aedes vexans</i>	1
Trap Site 1	6/4/2018	NJ Light Trap	<i>Aedes vexans</i>	1
			<i>Psorophora columbiae</i>	3
Trap Site 1	6/6/2018	NJ Light Trap	<i>Aedes vexans</i>	1
			<i>Anopheles quadrimaculatus</i>	1
Trap Site 1	7/12/2018	NJ Light Trap	<i>Anopheles quadrimaculatus</i>	27
Trap Site 1	7/18/2018	NJ Light Trap	<i>Anopheles quadrimaculatus</i>	18
Trap Site 1	7/25/2018	NJ Light Trap	<i>Anopheles quadrimaculatus</i>	7
Trap Site 1	8/13/2018	NJ Light Trap	<i>Anopheles quadrimaculatus</i>	48
Trap Site 1	8/20/2018	NJ Light Trap	<i>Anopheles quadrimaculatus</i>	31
Trap Site 1	8/27/2018	NJ Light Trap	<i>Anopheles quadrimaculatus</i>	31
			<i>Psorophora columbiae</i>	4
Trap Site 1	9/4/2018	NJ Light Trap	<i>Aedes vexans</i>	4
			<i>Psorophora columbiae</i>	3
Trap Site 1	9/14/2018	NJ Light Trap	<i>Aedes vexans</i>	3
			<i>Psorophora columbiae</i>	6
Trap Site 1	9/26/2018	NJ Light Trap	<i>Aedes vexans</i>	4
			<i>Psorophora columbiae</i>	1
Trap Site 1	10/2/2018	NJ Light Trap	<i>Aedes cinereus</i>	25
			<i>Psorophora columbiae</i>	6
				Trap Total 236 (Avg. 18.2)
Trap Site 2	5/29/2018	NJ Light Trap	<i>Aedes albopictus</i>	11
			<i>Aedes vexans</i>	2
			<i>Anopheles quadrimaculatus</i>	2
			<i>Anopheles quadrimaculatus</i>	2

Vector Disease Control International
 2221 N. Church Street
 Jonesboro, AR
 800-413-4445

Trap Location	Date Trap Set	Trap Type	Mosquito Species	No. Collected
Trap Site 2	6/18/2018	NJ Light Trap	<i>Anopheles quadrimaculatus</i>	6
			<i>Psorophora columbiae</i>	21
Trap Site 2	7/12/2018	NJ Light Trap	<i>Anopheles quadrimaculatus</i>	23
Trap Site 2	7/18/2018	NJ Light Trap	<i>Anopheles quadrimaculatus</i>	67
Trap Site 2	7/25/2018	NJ Light Trap	<i>Anopheles quadrimaculatus</i>	74
Trap Site 2	8/13/2018	NJ Light Trap	<i>Anopheles quadrimaculatus</i>	248
Trap Site 2	8/20/2018	NJ Light Trap	<i>Anopheles quadrimaculatus</i>	89
Trap Site 2	8/27/2018	NJ Light Trap	<i>Anopheles quadrimaculatus</i>	61
Trap Site 2	9/26/2018	NJ Light Trap	<i>Aedes vexans</i>	7
			<i>Anopheles quadrimaculatus</i>	3
			<i>Psorophora columbiae</i>	4
Trap Site 2	10/2/2018	NJ Light Trap	<i>Aedes vexans</i>	8
			<i>Psorophora columbiae</i>	26
Trap Total				654 (Avg. 65.4)
Trap Site 3	6/18/2018	NJ Light Trap	<i>Aedes vexans</i>	1
			<i>Anopheles quadrimaculatus</i>	11
Trap Total				12 (Avg. 12)
Trap Site 4	6/18/2018	NJ Light Trap	<i>Aedes vexans</i>	13
			<i>Aedes vexans</i>	3
			<i>Psorophora columbiae</i>	30
Trap Total				46 (Avg. 46)
Trap Site 5	6/18/2018	NJ Light Trap	<i>Anopheles quadrimaculatus</i>	16
			<i>Psorophora columbiae</i>	8
Trap Total				24 (Avg. 24)
Trap Site 6	7/25/2018	NJ Light Trap	<i>Anopheles quadrimaculatus</i>	8
Trap Total				8 (Avg. 8)

Treatment Area 2 Collections

Trap Site 1	6/18/2018	NJ Light Trap	<i>Aedes vexans</i>	2
			<i>Anopheles quadrimaculatus</i>	3
			<i>Psorophora columbiae</i>	5
Trap Total				10 (Avg. 10)
Trap Site 2	6/4/2018	NJ Light Trap	<i>Aedes vexans</i>	4
			<i>Psorophora columbiae</i>	2
Trap Site 2	6/6/2018	NJ Light Trap	<i>Aedes vexans</i>	1
			<i>Anopheles quadrimaculatus</i>	1

Trap Location	Date Trap Set	Trap Type	Mosquito Species	No. Collected
				Trap Total 8 (Avg. 4)
Trap Site 3	5/29/2018	NJ Light Trap	<i>Aedes albopictus</i>	20
			<i>Aedes vexans</i>	2
Trap Site 3	7/12/2018	NJ Light Trap	<i>Anopheles quadrimaculatus</i>	62
Trap Site 3	7/18/2018	NJ Light Trap	<i>Anopheles quadrimaculatus</i>	41
Trap Site 3	7/25/2018	NJ Light Trap	<i>Anopheles quadrimaculatus</i>	14
Trap Site 3	8/13/2018	NJ Light Trap	<i>Anopheles quadrimaculatus</i>	110
Trap Site 3	8/20/2018	NJ Light Trap	<i>Anopheles quadrimaculatus</i>	111
Trap Site 3	8/27/2018	NJ Light Trap	<i>Anopheles quadrimaculatus</i>	72
Trap Site 3	9/4/2018	NJ Light Trap	<i>Aedes vexans</i>	2
			<i>Anopheles quadrimaculatus</i>	2
			<i>Psorophora columbiae</i>	1
Trap Site 3	9/14/2018	NJ Light Trap	<i>Aedes vexans</i>	4
			<i>Psorophora columbiae</i>	3
Trap Site 3	9/26/2018	NJ Light Trap	<i>Aedes vexans</i>	8
Trap Site 3	10/2/2018	NJ Light Trap	<i>Aedes vexans</i>	19
			<i>Anopheles quadrimaculatus</i>	2
			<i>Psorophora columbiae</i>	8
				Trap Total 481 (Avg. 43.7)
Trap Site 4	5/29/2018	NJ Light Trap	<i>Aedes albopictus</i>	2
			<i>Aedes vexans</i>	3
Trap Site 4	8/1/2018	NJ Light Trap	<i>Anopheles quadrimaculatus</i>	50
				Trap Total 55 (Avg. 27.5)
Treatment Area 3 Collections				
Trap Site 1	6/4/2018	NJ Light Trap	<i>Aedes vexans</i>	2
Trap Site 1	7/12/2018	NJ Light Trap	<i>Anopheles quadrimaculatus</i>	11
				Trap Total 13 (Avg. 6.5)
Trap Site 10	9/4/2018	NJ Light Trap	<i>Aedes vexans</i>	3
			<i>Anopheles quadrimaculatus</i>	6
			<i>Psorophora columbiae</i>	1
				Trap Total 10 (Avg. 10)
Trap Site 2	6/6/2018	NJ Light Trap	<i>Aedes vexans</i>	2
Trap Site 2	7/18/2018	NJ Light Trap	<i>Anopheles quadrimaculatus</i>	24
Trap Site 2	7/25/2018	NJ Light Trap	<i>Anopheles quadrimaculatus</i>	11

Trap Location	Date Trap Set	Trap Type	Mosquito Species	No. Collected
Trap Site 2	9/26/2018	NJ Light Trap	<i>Aedes vexans</i>	6
			<i>Anopheles quadrimaculatus</i>	1
			<i>Psorophora columbiae</i>	1
Trap Total				45 (Avg. 11.2)
Trap Site 5	9/4/2018	NJ Light Trap	<i>Aedes vexans</i>	3
			Trap Total	
Trap Site 7	8/13/2018	NJ Light Trap	<i>Anopheles quadrimaculatus</i>	31
Trap Site 7	9/14/2018	NJ Light Trap	<i>Anopheles quadrimaculatus</i>	3
			<i>Psorophora columbiae</i>	4
Trap Total				38 (Avg. 19)
Trap Site 8	8/20/2018	NJ Light Trap	<i>Anopheles quadrimaculatus</i>	37
Trap Site 8	8/27/2018	NJ Light Trap	<i>Aedes vexans</i>	2
			<i>Anopheles quadrimaculatus</i>	6
			<i>Psorophora columbiae</i>	3
Trap Site 8	9/4/2018	NJ Light Trap	<i>Aedes vexans</i>	16
			<i>Anopheles quadrimaculatus</i>	8
Trap Site 8	10/2/2018	NJ Light Trap	<i>Aedes vexans</i>	12
			<i>Psorophora columbiae</i>	1
Trap Total				85 (Avg. 21.2)

Treatment Area 4 Collections

Trap Site 2	5/28/2018	NJ Light Trap	<i>Aedes vexans</i>	1
			<i>Anopheles quadrimaculatus</i>	1
Trap Site 2	6/4/2018	NJ Light Trap	<i>Aedes vexans</i>	4
			<i>Psorophora columbiae</i>	25
Trap Site 2	7/12/2018	NJ Light Trap	<i>Anopheles quadrimaculatus</i>	14
Trap Site 2	8/1/2018	NJ Light Trap	<i>Anopheles quadrimaculatus</i>	25
Trap Total				70 (Avg. 17.5)
Trap Site 3	6/6/2018	NJ Light Trap	<i>Aedes vexans</i>	1
Trap Site 3	7/18/2018	NJ Light Trap	<i>Anopheles quadrimaculatus</i>	35
Trap Site 3	7/25/2018	NJ Light Trap	<i>Anopheles quadrimaculatus</i>	30
Trap Site 3	8/1/2018	NJ Light Trap	<i>Anopheles quadrimaculatus</i>	162
Trap Site 3	9/26/2018	NJ Light Trap	<i>Aedes vexans</i>	8
Trap Total				236 (Avg. 47.2)
Trap Site 8	8/13/2018	NJ Light Trap	<i>Anopheles quadrimaculatus</i>	212
Trap Site 8	9/14/2018	NJ Light Trap	<i>Aedes vexans</i>	5

Trap Location	Date Trap Set	Trap Type	Mosquito Species	No. Collected
Trap Site 8	9/14/2018	NJ Light Trap	<i>Psorophora columbiae</i>	7
Trap Total				224 (Avg. 112)
Trap Site 9	8/27/2018	NJ Light Trap	<i>Anopheles quadrimaculatus</i>	148
Trap Site 9	9/4/2018	NJ Light Trap	<i>Aedes vexans</i>	6
			<i>Anopheles quadrimaculatus</i>	12
			<i>Psorophora columbiae</i>	8
Trap Site 9	10/2/2018	NJ Light Trap	<i>Aedes vexans</i>	8
			<i>Psorophora columbiae</i>	56
Trap Total				238 (Avg. 79.3)

Treatment Area 5 Collections

6	7/25/2018	NJ Light Trap	<i>Anopheles quadrimaculatus</i>	4
Trap Total				4 (Avg. 4)
Trap Site 1	7/18/2018	NJ Light Trap	<i>Psorophora columbiae</i>	2
Trap Total				2 (Avg. 2)
Trap Site 10	8/13/2018	NJ Light Trap	<i>Anopheles quadrimaculatus</i>	39
Trap Site 10	8/20/2018	NJ Light Trap	<i>Anopheles quadrimaculatus</i>	18
Trap Site 10	9/14/2018	NJ Light Trap	<i>Aedes vexans</i>	4
			<i>Anopheles quadrimaculatus</i>	5
			<i>Psorophora columbiae</i>	3
Trap Total				69 (Avg. 23)
Trap Site 11	8/27/2018	NJ Light Trap	<i>Anopheles quadrimaculatus</i>	44
			<i>Psorophora columbiae</i>	5
Trap Site 11	9/4/2018	NJ Light Trap	<i>Aedes vexans</i>	7
			<i>Anopheles quadrimaculatus</i>	13
			<i>Psorophora columbiae</i>	18
Trap Site 11	10/2/2018	NJ Light Trap	<i>Aedes vexans</i>	11
			<i>Psorophora columbiae</i>	21
Trap Total				119 (Avg. 39.7)
Trap Site 12	8/13/2018	NJ Light Trap	<i>Anopheles quadrimaculatus</i>	28
Trap Site 12	8/20/2018	NJ Light Trap	<i>Aedes vexans</i>	3
			<i>Anopheles quadrimaculatus</i>	31
Trap Site 12	9/14/2018	NJ Light Trap	<i>Aedes vexans</i>	2
			<i>Anopheles quadrimaculatus</i>	1
			<i>Psorophora columbiae</i>	4
Trap Total				69 (Avg. 23)

Trap Location	Date Trap Set	Trap Type	Mosquito Species	No. Collected
Trap Site 13	8/27/2018	NJ Light Trap	<i>Anopheles quadrimaculatus</i>	16
			<i>Psorophora columbiae</i>	2
Trap Site 13	9/4/2018	NJ Light Trap	<i>Aedes vexans</i>	1
			<i>Anopheles quadrimaculatus</i>	3
			<i>Psorophora columbiae</i>	2
Trap Site 13	10/2/2018	NJ Light Trap	<i>Aedes vexans</i>	2
			<i>Psorophora columbiae</i>	6
Trap Total				32 (Avg. 10.7)
Trap Site 2	6/4/2018	NJ Light Trap	<i>Aedes vexans</i>	2
			<i>Psorophora columbiae</i>	2
Trap Total				4 (Avg. 4)
Trap Site 3	5/28/2018	NJ Light Trap	<i>Aedes vexans</i>	8
			<i>Aedes vexans</i>	1
			<i>Aedes vexans</i>	1
Trap Total				10 (Avg. 10)
Trap Site 4	6/6/2018	NJ Light Trap	<i>Psorophora columbiae</i>	2
Trap Site 4	7/12/2018	NJ Light Trap	<i>Anopheles quadrimaculatus</i>	43
Trap Total				45 (Avg. 22.5)
Trap Site 5	6/6/2018	NJ Light Trap	<i>Anopheles quadrimaculatus</i>	2
Trap Site 5	7/18/2018	NJ Light Trap	<i>Anopheles quadrimaculatus</i>	20
			<i>Psorophora columbiae</i>	2
Trap Site 5	7/25/2018	NJ Light Trap	<i>Anopheles quadrimaculatus</i>	12
Trap Site 5	8/1/2018	NJ Light Trap	<i>Anopheles quadrimaculatus</i>	28
Trap Site 5	9/26/2018	NJ Light Trap	<i>Aedes vexans</i>	3
			<i>Anopheles quadrimaculatus</i>	2
			<i>Psorophora columbiae</i>	1
Trap Total				70 (Avg. 14)
Trap Site 6	7/18/2018	NJ Light Trap	<i>Anopheles quadrimaculatus</i>	10
			<i>Anopheles quadrimaculatus</i>	5
Trap Site 6	7/25/2018	NJ Light Trap	<i>Anopheles quadrimaculatus</i>	12
Trap Total				27 (Avg. 13.5)
Trap Site 7	8/1/2018	NJ Light Trap	<i>Anopheles quadrimaculatus</i>	14
Trap Site 7	9/26/2018	NJ Light Trap	<i>Aedes vexans</i>	3
Trap Total				17 (Avg. 8.5)

Treatment Area 6 Collections

Trap Location	Date Trap Set	Trap Type	Mosquito Species	No. Collected
Trap Site 4	6/4/2018	NJ Light Trap	<i>Aedes vexans</i>	20
			<i>Psorophora columbiae</i>	5
Trap Site 4	6/6/2018	NJ Light Trap	<i>Anopheles quadrimaculatus</i>	1
Trap Site 4	8/13/2018	NJ Light Trap	<i>Anopheles quadrimaculatus</i>	244
Trap Total				270 (Avg. 90)
Trap Site 5	5/29/2018	NJ Light Trap	<i>Aedes albopictus</i>	3
			<i>Anopheles quadrimaculatus</i>	1
Trap Site 5	6/6/2018	NJ Light Trap	<i>Anopheles quadrimaculatus</i>	6
Trap Site 5	7/12/2018	NJ Light Trap	<i>Anopheles quadrimaculatus</i>	57
Trap Site 5	7/18/2018	NJ Light Trap	<i>Anopheles quadrimaculatus</i>	32
Trap Site 5	7/25/2018	NJ Light Trap	<i>Anopheles quadrimaculatus</i>	38
Trap Site 5	8/1/2018	NJ Light Trap	<i>Anopheles quadrimaculatus</i>	44
			<i>Anopheles quadrimaculatus</i>	50
Trap Site 5	8/13/2018	NJ Light Trap	<i>Anopheles quadrimaculatus</i>	50
			<i>Anopheles quadrimaculatus</i>	8
Trap Site 5	8/20/2018	NJ Light Trap	<i>Aedes vexans</i>	8
			<i>Anopheles quadrimaculatus</i>	124
Trap Site 5	8/27/2018	NJ Light Trap	<i>Anopheles quadrimaculatus</i>	36
			<i>Psorophora columbiae</i>	24
Trap Site 5	9/4/2018	NJ Light Trap	<i>Anopheles quadrimaculatus</i>	11
			<i>Psorophora columbiae</i>	26
Trap Site 5	9/14/2018	NJ Light Trap	<i>Aedes vexans</i>	1
			<i>Aedes vexans</i>	4
			<i>Anopheles quadrimaculatus</i>	2
			<i>Anopheles quadrimaculatus</i>	3
			<i>Psorophora columbiae</i>	5
Trap Site 5	9/26/2018	NJ Light Trap	<i>Psorophora columbiae</i>	2
			<i>Aedes vexans</i>	5
Trap Site 5	10/2/2018	NJ Light Trap	<i>Anopheles quadrimaculatus</i>	1
			<i>Psorophora columbiae</i>	1
			<i>Aedes vexans</i>	6
Trap Total				531 (Avg. 40.8)
Trap Site 6	7/18/2018	NJ Light Trap	<i>Anopheles quadrimaculatus</i>	29
Trap Site 6	7/25/2018	NJ Light Trap	<i>Anopheles quadrimaculatus</i>	17
Trap Site 6	8/1/2018	NJ Light Trap	<i>Anopheles quadrimaculatus</i>	22
Trap Site 6	8/20/2018	NJ Light Trap	<i>Anopheles quadrimaculatus</i>	53
Trap Site 6	8/27/2018	NJ Light Trap	<i>Anopheles quadrimaculatus</i>	21

Trap Location	Date Trap Set	Trap Type	Mosquito Species	No. Collected
Trap Site 6	9/4/2018	NJ Light Trap	<i>Aedes vexans</i>	2
			<i>Anopheles quadrimaculatus</i>	18
			<i>Psorophora columbiae</i>	12
Trap Site 6	9/26/2018	NJ Light Trap	<i>Aedes vexans</i>	6
			<i>Psorophora columbiae</i>	1
Trap Site 6	10/2/2018	NJ Light Trap	<i>Aedes vexans</i>	9
			<i>Psorophora columbiae</i>	18
Trap Total				208 (Avg. 26)

Treatment Area 8 Collections

Trap Site 10	8/27/2018	NJ Light Trap	<i>Anopheles quadrimaculatus</i>	16
Trap Site 10	10/2/2018	NJ Light Trap	<i>Aedes vexans</i>	2
			<i>Psorophora columbiae</i>	2
Trap Total				20 (Avg. 10)
Trap Site 3	6/4/2018	NJ Light Trap	<i>Aedes vexans</i>	11
Trap Site 3	6/6/2018	NJ Light Trap	<i>Anopheles quadrimaculatus</i>	7
Trap Total				18 (Avg. 9)
Trap Site 4	7/12/2018	NJ Light Trap	<i>Anopheles quadrimaculatus</i>	27
Trap Site 4	7/18/2018	NJ Light Trap	<i>Anopheles quadrimaculatus</i>	8
			<i>Anopheles quadrimaculatus</i>	38
			<i>Anopheles quadrimaculatus</i>	12
Trap Site 4	7/25/2018	NJ Light Trap	<i>Anopheles quadrimaculatus</i>	6
			<i>Anopheles quadrimaculatus</i>	22
Trap Site 4	8/1/2018	NJ Light Trap	<i>Anopheles quadrimaculatus</i>	11
			<i>Anopheles quadrimaculatus</i>	8
Trap Site 4	8/20/2018	NJ Light Trap	<i>Aedes vexans</i>	6
			<i>Anopheles quadrimaculatus</i>	123
Trap Site 4	8/27/2018	NJ Light Trap	<i>Anopheles quadrimaculatus</i>	86
Trap Site 4	9/4/2018	NJ Light Trap	<i>Aedes vexans</i>	4
			<i>Anopheles quadrimaculatus</i>	18
			<i>Psorophora columbiae</i>	6
Trap Site 4	9/14/2018	NJ Light Trap	<i>Aedes vexans</i>	2
			<i>Anopheles quadrimaculatus</i>	6
			<i>Psorophora columbiae</i>	4
Trap Site 4	9/26/2018	NJ Light Trap	<i>Aedes vexans</i>	5
			<i>Aedes vexans</i>	6

Trap Location	Date Trap Set	Trap Type	Mosquito Species	No. Collected
Trap Site 4	9/26/2018	NJ Light Trap	<i>Psorophora columbiae</i>	2
			<i>Psorophora columbiae</i>	1
Trap Site 4	10/2/2018	NJ Light Trap	<i>Aedes vexans</i>	12
			<i>Psorophora columbiae</i>	6
Trap Total				419 (Avg. 41.9)
Trap Site 5	6/18/2018	NJ Light Trap	<i>Anopheles freeborni</i>	16
			<i>Psorophora columbiae</i>	8
Trap Site 5	7/18/2018	NJ Light Trap	<i>Anopheles quadrimaculatus</i>	26
Trap Site 5	8/1/2018	NJ Light Trap	<i>Anopheles quadrimaculatus</i>	8
Trap Total				58 (Avg. 19.3)
Trap Site 9	8/13/2018	NJ Light Trap	<i>Anopheles quadrimaculatus</i>	43
Trap Site 9	8/20/2018	NJ Light Trap	<i>Anopheles quadrimaculatus</i>	16
Trap Site 9	9/14/2018	NJ Light Trap	<i>Aedes vexans</i>	4
			<i>Psorophora columbiae</i>	8
Trap Total				71 (Avg. 23.7)
Treatment Area 9 Collections				
Trap Site 11	8/13/2018	NJ Light Trap	<i>Anopheles quadrimaculatus</i>	42
Trap Site 11	8/20/2018	NJ Light Trap	<i>Anopheles quadrimaculatus</i>	22
Trap Site 11	9/14/2018	NJ Light Trap	<i>Aedes vexans</i>	3
			<i>Anopheles quadrimaculatus</i>	6
			<i>Psorophora columbiae</i>	8
Trap Total				81 (Avg. 27)
Trap Site 12	8/27/2018	NJ Light Trap	<i>Anopheles quadrimaculatus</i>	46
			<i>Psorophora columbiae</i>	4
Trap Site 12	9/4/2018	NJ Light Trap	<i>Aedes vexans</i>	2
			<i>Anopheles quadrimaculatus</i>	6
			<i>Psorophora columbiae</i>	12
Trap Site 12	10/2/2018	NJ Light Trap	<i>Aedes vexans</i>	8
			<i>Psorophora columbiae</i>	32
Trap Total				110 (Avg. 36.7)
Trap Site 6	8/1/2018	NJ Light Trap	<i>Anopheles quadrimaculatus</i>	26
Trap Site 6	9/26/2018	NJ Light Trap	<i>Aedes vexans</i>	4
			<i>Anopheles quadrimaculatus</i>	2
			<i>Psorophora columbiae</i>	3
Trap Total				35 (Avg. 17.5)

Trap Location	Date Trap Set	Trap Type	Mosquito Species	No. Collected
Treatment Area 10 Collections				
Trap Site 1	5/28/2018	NJ Light Trap	<i>Anopheles quadrimaculatus</i>	1
Trap Site 1	6/6/2018	NJ Light Trap	<i>Anopheles quadrimaculatus</i>	4
Trap Site 1	7/18/2018	NJ Light Trap	<i>Anopheles quadrimaculatus</i>	40
			<i>Anopheles quadrimaculatus</i>	31
Trap Site 1	7/25/2018	NJ Light Trap	<i>Anopheles quadrimaculatus</i>	21
Trap Site 1	8/1/2018	NJ Light Trap	<i>Anopheles quadrimaculatus</i>	67
Trap Site 1	9/26/2018	NJ Light Trap	<i>Aedes vexans</i>	7
			<i>Psorophora columbiae</i>	3
Trap Total				174 (Avg. 29)
Trap Site 2	7/18/2018	NJ Light Trap	<i>Anopheles quadrimaculatus</i>	16
			<i>Psorophora columbiae</i>	4
Trap Total				20 (Avg. 20)
Trap Site 3	7/18/2018	NJ Light Trap	<i>Anopheles quadrimaculatus</i>	48
Trap Total				48 (Avg. 48)
Trap Site 6	8/13/2018	NJ Light Trap	<i>Anopheles quadrimaculatus</i>	74
Trap Site 6	9/14/2018	NJ Light Trap	<i>Aedes vexans</i>	4
			<i>Anopheles quadrimaculatus</i>	2
			<i>Psorophora columbiae</i>	9
Trap Total				89 (Avg. 44.5)
Trap Site 7	8/20/2018	NJ Light Trap	<i>Aedes vexans</i>	16
			<i>Anopheles quadrimaculatus</i>	47
Trap Site 7	8/27/2018	NJ Light Trap	<i>Aedes vexans</i>	12
			<i>Anopheles quadrimaculatus</i>	51
			<i>Psorophora columbiae</i>	6
Trap Site 7	9/4/2018	NJ Light Trap	<i>Aedes vexans</i>	7
			<i>Anopheles quadrimaculatus</i>	14
Trap Site 7	10/2/2018	NJ Light Trap	<i>Aedes vexans</i>	4
			<i>Anopheles quadrimaculatus</i>	6
			<i>Psorophora columbiae</i>	3
Trap Total				166 (Avg. 41.5)
Overall Trap Total				5,315
Overall Trap Average				32.2



Larvicide Applications

Start Date: 9/1/2018

End Date: 10/31/2018

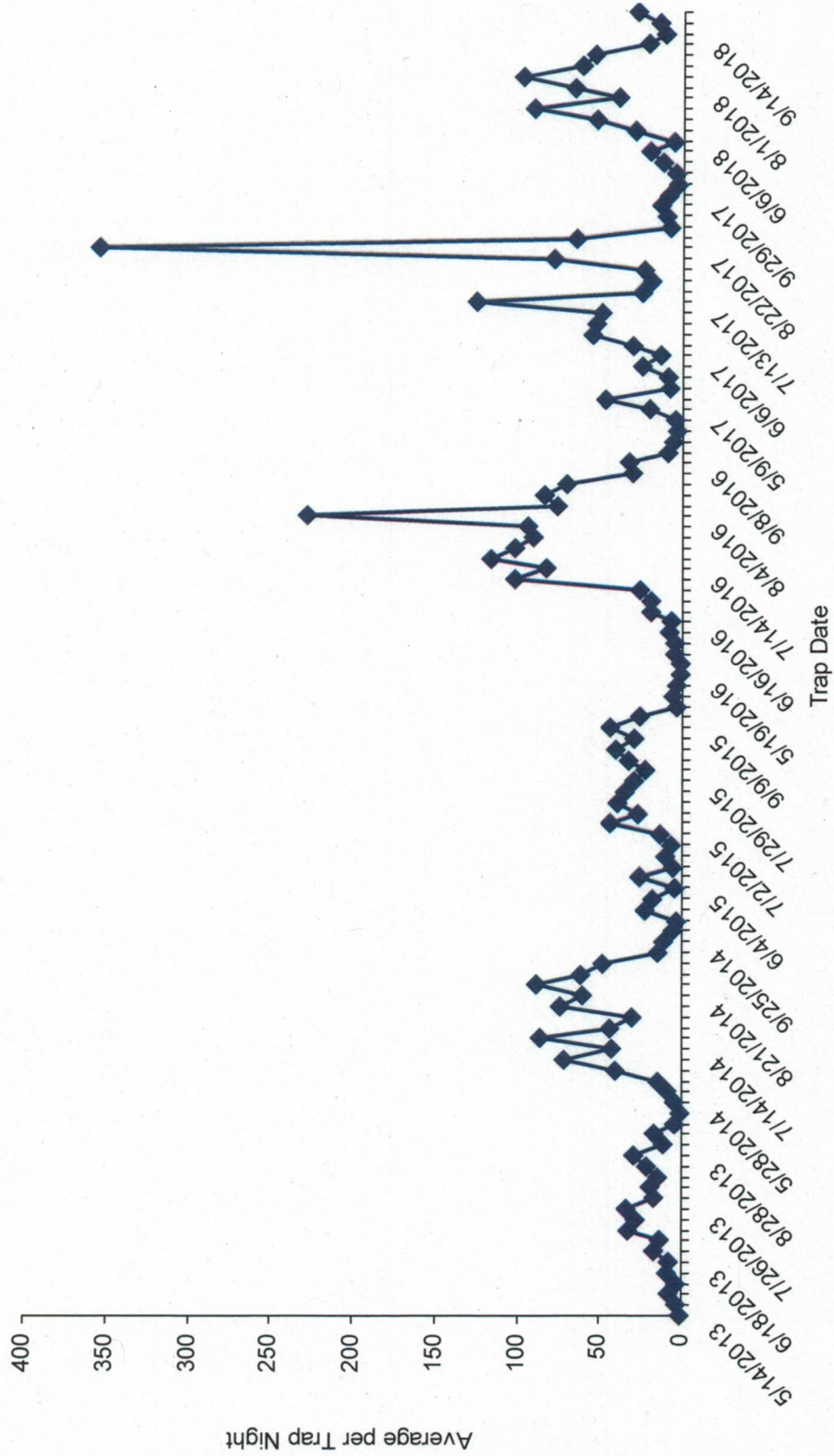
Jonesboro

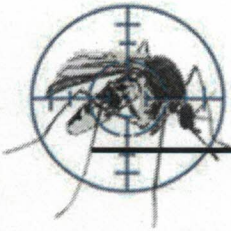
Date	Location	Habitat	No. of Larvae	Larvicide	Amount Applied (oz.)	Area Treated (sq ft)
Treatment Area 1 Applications						
9/18/2018	1110 Blankeship	Ditch	5	Aquabac 200G (62637-3)	4.0	5.0
					Total Ounces Applied:	4.0
						5.0
						0.0 acres
					Total Larvicide Applied in Zone 1:	4.0
						5.0
						0.0 acres
					Overall Total Ounces Applied	4.0
						5.0
						0.0 acres



Adult Mosquito Surveillance Summary

Jonesboro





Larval Surveillance Data

Start Date: 9/1/2018

End Date: 10/31/2018

Jonesboro

Date	Location	Habitat	No. Dipped	Larvicided	Mosquito Species	No. ID'd
Treatment Area 1 Sites Inspected						
9/10/2018		Ditch	0	No		
	2707 Duncan	Ditch	0	No		
	915 Arrowhead	Ditch	0	No		
	Best Industiral	Ditch	0	No		
9/14/2018		Ditch	0	No		
	1202 Easley Lane	Ditch	0	No		
	2613 Progress	Ditch	0	No		
	2721 Breezhood Drive	Ditch	0	No		
	2921 Industrial Drive	Ditch	0	No		
	5517 Pacific Road	Ditch	0	No		
	7001 Taylor Lane	Ditch	0	No		
9/18/2018	1110 Blankeship	Ditch	5	Yes		

Total Sites Inspected in Zone 1: 12



Ground Adulticide Applications

Start Date: 9/1/2018 End Date: 10/31/2018

Jonesboro

Month	Date	Municipality	Chemical	Mix Ratio	Trip Miles	Spray Miles	Spray Acres	Gallons Sprayed	
Treatment Area 1 Applications									
September 2018	9/10/2018		Permanone 30-30 (432-1235)	4:1	51.0	34.7	1261.4	9.7	
	9/14/2018		Permanone 30-30 (432-1235)	4:1	0.0	0.0	0.0	0.0	
	9/17/2018		Permanone 30-30 (432-1235)	5:1	9.0	6.8	248.5	1.9	
	9/20/2018		Permanone 30-30 (432-1235)	4:1	23.0	15.1	549.8	4.2	
	9/20/2018		Permanone 30-30 (432-1235)	5:1	64.0	27.2	987.5	7.6	
					<i>Total Permanone 30-30 Applied:</i>			23.4	
October 2018	10/5/2018		Permanone 30-30 (432-1235)	6:1	56.0	17.2	625.9	6.9	
					<i>Total Permanone 30-30 Applied:</i>			6.9	
					Zone 1 Totals:	203.0	101.0	3,673.1	30.3
Treatment Area 2 Applications									
September 2018	9/4/2018		Permanone 30-30 (432-1235)	4:1	52.0	36.3	1319.7	10.2	

Vector Disease Control International
2221 N. Church Street
Jonesboro, AR
800-413-4445

Month	Date	Municipality	Chemical	Mix Ratio	Trip Miles	Spray Miles	Spray Acres	Gallons Sprayed	
September 2018	9/14/2018		Permanone 30-30 (432-1235)	5:1	46.0	31.4	1141.0	9.2	
October 2018	10/1/2018		Permanone 30-30 (432-1235)	5:1	0.0	0.0	0.0	0.0	
					<i>Total Permanone 30-30 Applied: 19.3</i>				
					<i>Total Permanone 30-30 Applied: 0.0</i>				
					Zone 2 Totals:	98.0	67.7	2,460.8	19.3
Treatment Area 3 Applications									
September 2018	9/13/2018		Permanone 30-30 (432-1235)	5:1	41.0	40.8	1481.8	11.5	
October 2018	10/2/2018		Permanone 30-30 (432-1235)	7:1	43.0	32.6	1102.0	9.0	
					<i>Total Permanone 30-30 Applied: 11.5</i>				
					<i>Total Permanone 30-30 Applied: 9.0</i>				
					Zone 3 Totals:	84.0	73.4	2,583.8	20.5
Treatment Area 4 Applications									
September 2018	9/4/2018		Permanone 30-30 (432-1235)	4:1	46.0	45.8	1668.7	12.9	
9/14/2018			Permanone 30-30 (432-1235)	5:1	40.0	35.7	1300.6	10.0	
9/24/2018			Permanone 30-30 (432-1235)	5:1	23.0	23.1	839.0	10.4	
					<i>Total Permanone 30-30 Applied: 33.2</i>				
October 2018	10/4/2018		Permanone 30-30 (432-1235)	6:1	29.0	28.4	1031.8	12.7	

Vector Disease Control International
2221 N. Church Street
Jonesboro, AR
800-413-4445

Month	Date	Municipality	Chemical	Mix Ratio	Trip Miles	Spray Miles	Spray Acres	Gallons Sprayed
October 2018	10/5/2018		Permanone 30-30 (432-1235)	6:1	45.0	41.6	1640.0	8.6
	10/6/2018		Permanone 30-30 (432-1235)	6:1	0.0	0.0	0.0	0.0
<i>Total Permanone 30-30 Applied:</i>								
					183.0	174.6	6,480.2	54.5
Treatment Area 5 Applications								
September 2018	9/6/2018		0	4:1	41.0	40.5	1472.8	11.4
<i>Total Applied:</i>								
September 2018	9/17/2018		Permanone 30-30 (432-1235)	4:1	48.0	29.8	1083.3	8.9
	9/20/2018		Permanone 30-30 (432-1235)	5:1	0.0	0.0	0.0	0.0
<i>Total Permanone 30-30 Applied:</i>								
					89.0	70.3	2,556.1	20.3
Treatment Area 6 Applications								
September 2018	9/10/2018		Permanone 30-30 (432-1235)	4:1	76.0	39.8	1445.7	11.2
	9/18/2018		Permanone 30-30 (432-1235)	5:1	46.0	45.5	1653.6	20.1
<i>Total Permanone 30-30 Applied:</i>								
October 2018	10/4/2018		Permanone 30-30 (432-1235)	6:1	55.0	0.0	0.0	18.3
<i>Total Permanone 30-30 Applied:</i>								
					31.3	0.0	0.0	18.3

Vector Disease Control International
 2221 N. Church Street
 Jonesboro, AR
 800-413-4445

Month	Date	Municipality	Chemical	Mix Ratio	Trip Miles	Spray Miles	Spray Acres	Gallons Sprayed
October 2018	10/8/2018		Permanone 30-30 (432-1235)	7:1	47.0	47.0	1475.5	12.8
<i>Total Permanone 30-30 Applied:</i>								
					224.0	132.2	4,574.8	31.1
Zone 6 Totals: 224.0 132.2 4,574.8 31.1								
Treatment Area 7 Applications								
October 2018	10/2/2018		Permanone 30-30 (432-1235)	7:1	48.0	46.4	1705.6	20.7
<i>Total Permanone 30-30 Applied:</i>								
					48.0	46.4	1,705.6	20.7
Zone 7 Totals: 48.0 46.4 1,705.6 20.7								
Treatment Area 8 Applications								
September 2018	9/5/2018		Permanone 30-30 (432-1235)	4:1	47.0	37.6	1364.0	10.0
<i>Total Permanone 30-30 Applied:</i>								
					47.0	37.6	1364.0	10.0
October 2018	10/5/2018		Permanone 30-30 (432-1235)	6:1	55.0	35.0	1273.3	11.9
<i>Total Permanone 30-30 Applied:</i>								
					102.0	72.6	2,637.3	11.9
Zone 8 Totals: 102.0 72.6 2,637.3 11.9								
Treatment Area 9 Applications								
October 2018	10/2/2018		Permanone 30-30 (432-1235)	7:1	57.0	47.5	1725.7	13.3
<i>Total Permanone 30-30 Applied:</i>								
					57.0	47.5	1,725.7	13.3
Zone 9 Totals: 57.0 47.5 1,725.7 13.3								
Treatment Area 10 Applications								

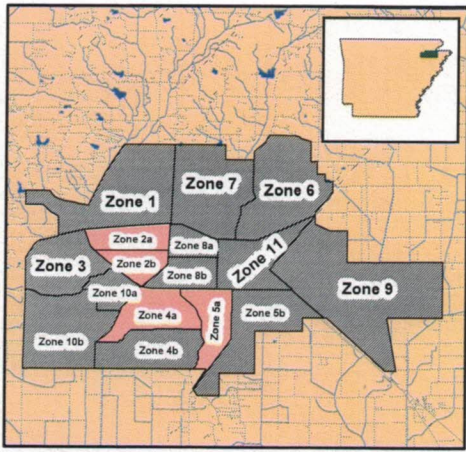
Vector Disease Control International
2221 N. Church Street
Jonesboro, AR
800-413-4445

Month	Date	Municipality	Chemical	Mix Ratio	Trip Miles	Spray Miles	Spray Acres	Gallons Sprayed
September 2018	9/17/2018		Permanone 30-30 (432-1235)	5:1	43.0	42.8	1556.9	18.8
					<i>Total Permanone 30-30 Applied:</i>			18.8
October 2018	10/5/2018		Permanone 30-30 (432-1235)	5:1	54.0	53.1	1930.2	11.0
	10/8/2018		Permanone 30-30 (432-1235)	5:1	44.0	41.6	1512.6	12.0
					<i>Total Permanone 30-30 Applied:</i>			23.1
Treatment Area 11 Applications								
					Zone 10 Totals:	137.5	4,999.8	41.9
September 2018	9/13/2018		Permanone 30-30 (432-1235)	4:1	35.0	24.9	905.5	7.4
					<i>Total Permanone 30-30 Applied:</i>			7.4
					Zone 11 Totals:	24.9	905.5	7.4
					Grand Totals:	948.0	34,302.6	312.7

Vector Disease Control International
2221 N. Church Street
Jonesboro, AR
800-413-4445

Jonesboro, Arkansas

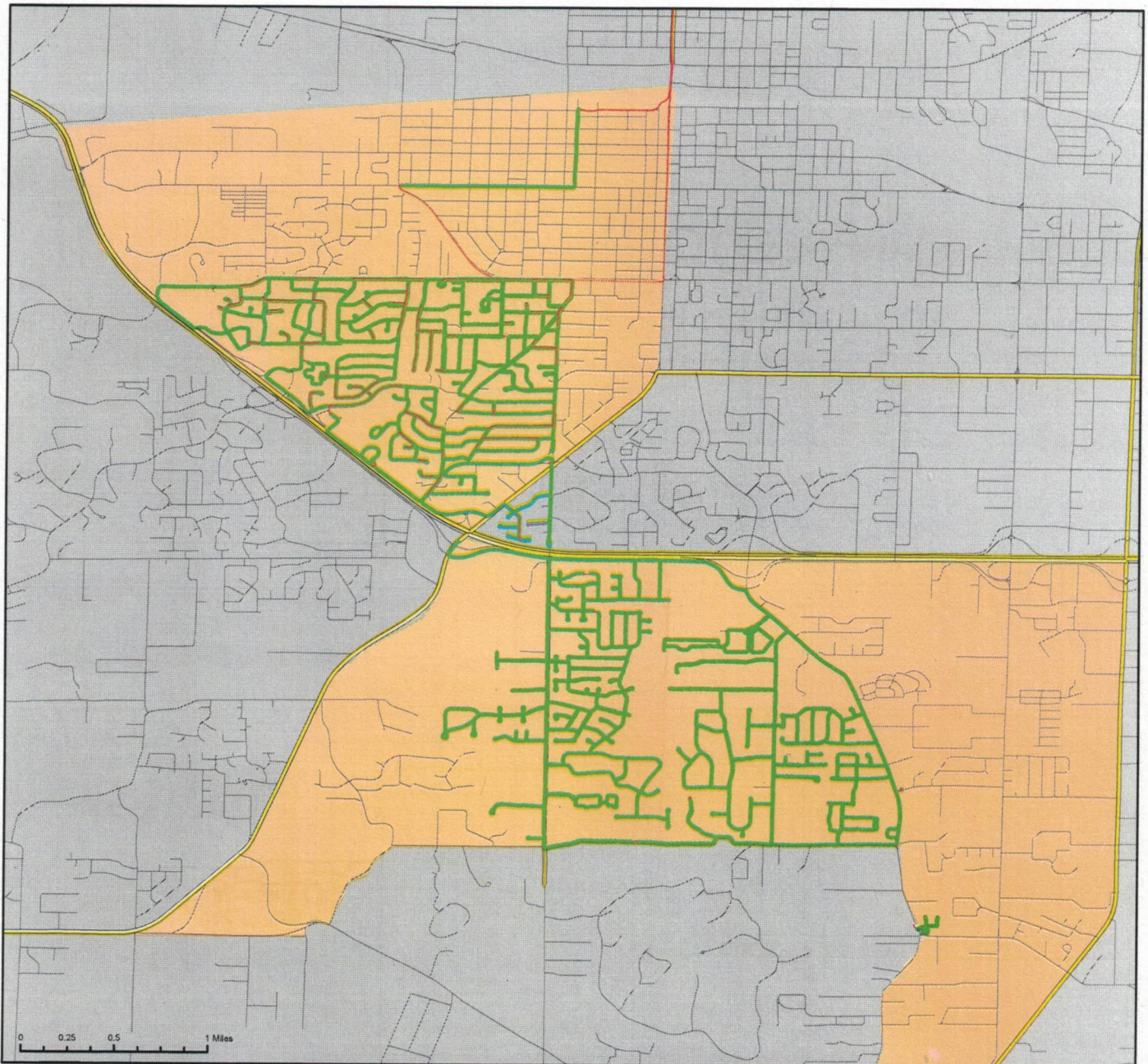
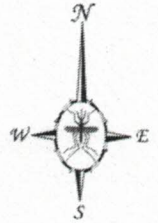
Ground Adulticide Application Date:
September 4, 2018



Sprayer Status

- Spray Off
- Spray On

Chemical: Permanone 31-66
Quantity Used: 23.1 gal
Miles Treated: 82.2
Acres Treated: 2,988.0

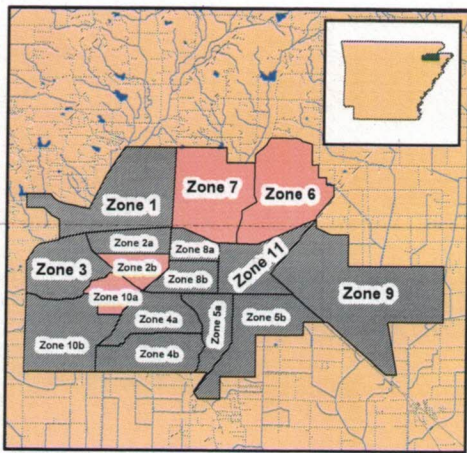


Vector Disease Control
1320 Brookland Dr., Suite H
Little Rock, AR 72202

These map products were developed for use by VDCI for its internal purposes only and were not designed or intended for general use by members of the public. VDCI makes no representation or warranty as to its accuracy, timeliness, or completeness, and in particular, its accuracy in labeling or displaying dimensions, contours, property boundaries, or placement or location of any map features thereon. © 2018 VDCI. All rights reserved.

Jonesboro, Arkansas

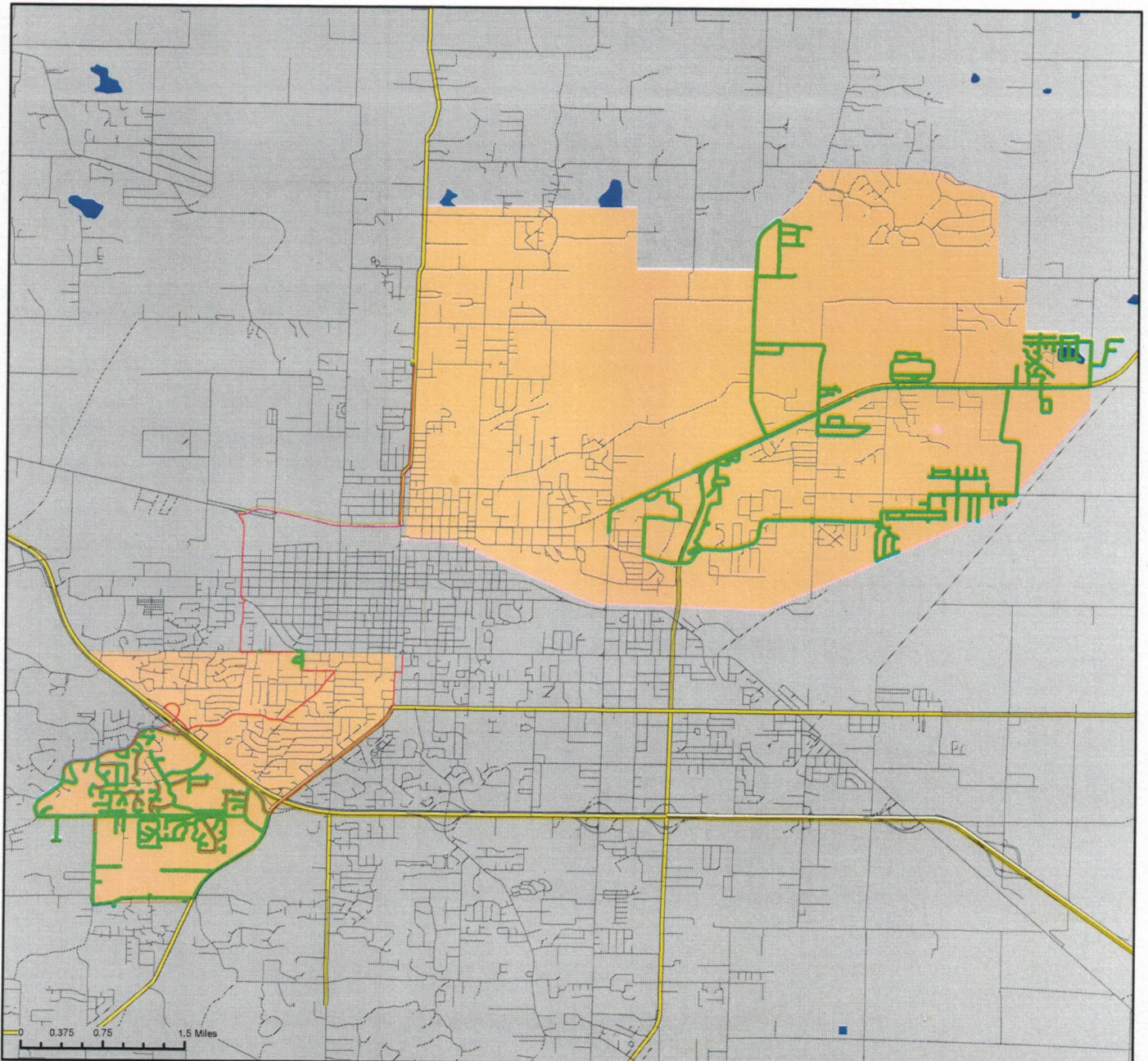
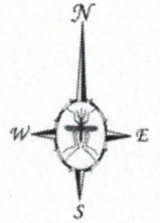
Ground Adulticide Application Date:
September 10, 2018



Sprayer Status

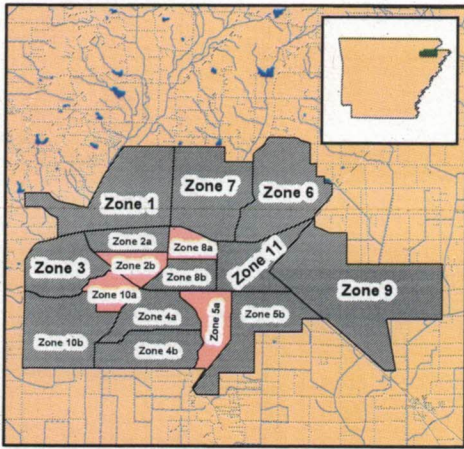
- Spray Off
- Spray On

Chemical: Permanone 31-66
Quantity Used: 20.8 gal
Miles Treated: 74.5
Acres Treated: 2,707.0



Jonesboro, Arkansas

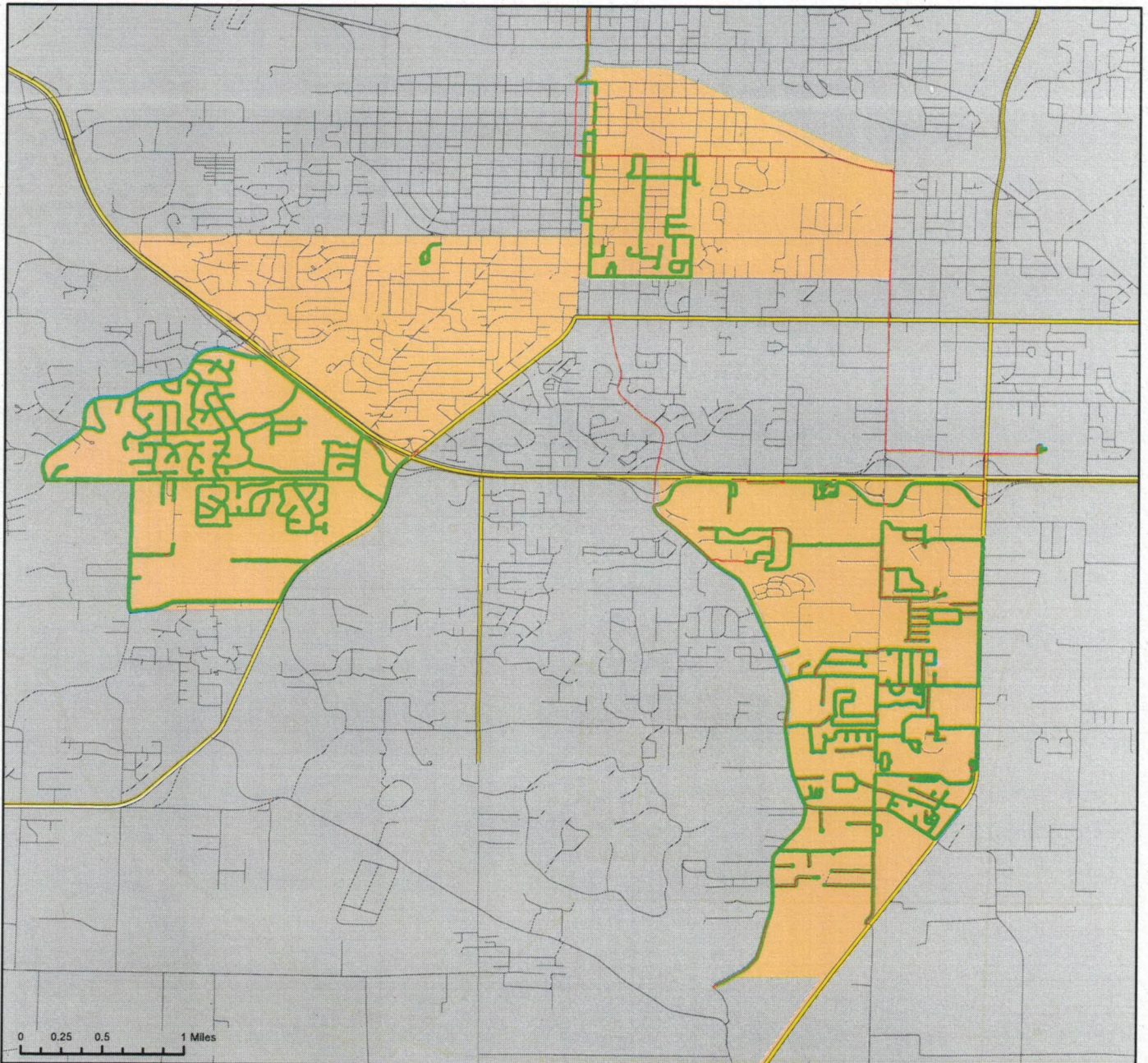
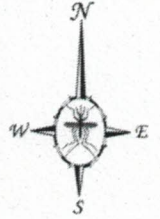
Ground Adulticide Application Date:
September 17, 2018



Sprayer Status

- Spray Off
- Spray On

Chemical: Permanone 31-66
Quantity Used: 29.6 gal
Miles Treated: 79.4
Acres Treated: 2,889.0

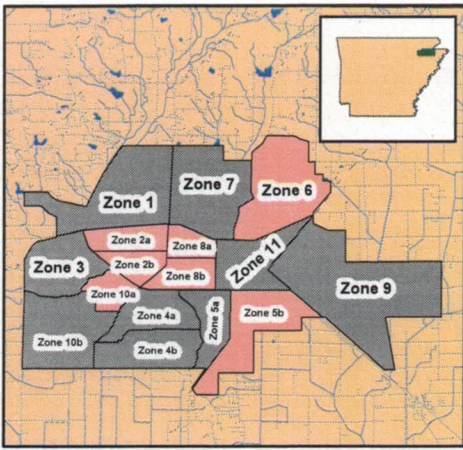


Vector Disease Control
1320 Brookland Dr., Suite H
Little Rock, AR 72202

These map products were developed for use by VDCI for its internal purposes only and were not designed or intended for general use by members of the public. VDCI makes no representation or warranty as to its accuracy, timeliness, or completeness, and in particular, its accuracy in labeling or displaying dimensions, contours, property boundaries, or placement or location of any map features thereon. © 2018 VDCI. All rights reserved.

Jonesboro, Arkansas

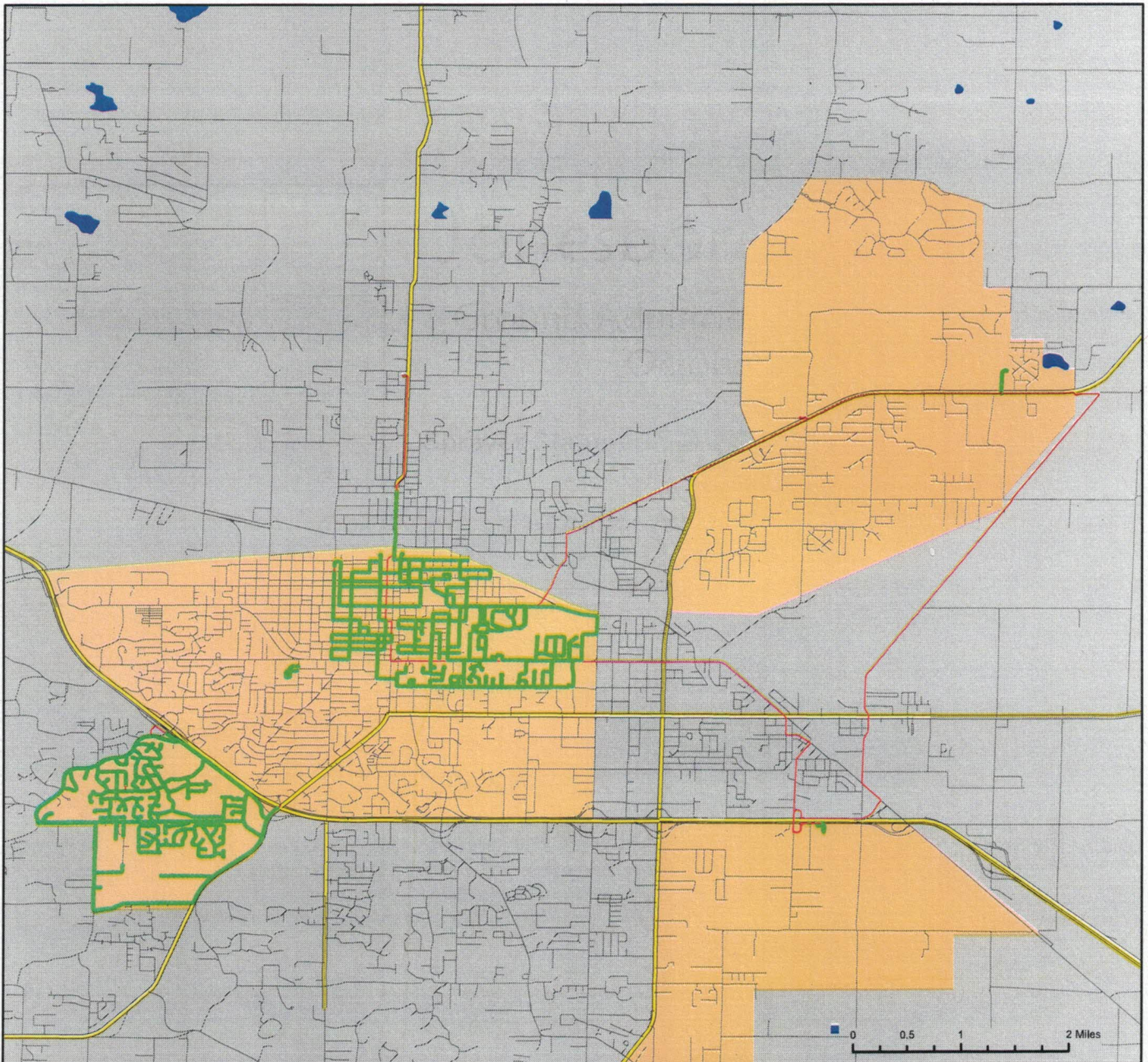
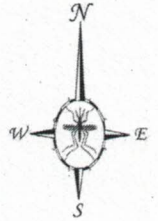
Ground Adulticide Application Date:
October 5, 2018



Sprayer Status

- Spray Off
- Spray On

Chemical: Permanone 30-30
Quantity Used: 26.9 gal
Miles Treated: 88.1
Acres Treated: 3,204.0



Vector Disease Control
1320 Brookland Dr., Suite H
Little Rock, AR 72202

These map products were developed for use by VDCI for its internal purposes only and were not designed or intended for general use by members of the public. VDCI makes no representation or warranty as to its accuracy, timeliness, or completeness, and in particular, its accuracy in labeling or displaying dimensions, contours, property boundaries, or placement or location of any map features thereon. © 2018 VDCI. All rights reserved.