



Vector Disease Control, Inc.  
Mosquito Surveillance and Control Report

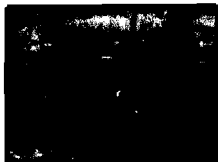
for the

**City of Jonesboro**

July 2008

2221 N. Church St. Jonesboro, AR 72401

T-870.933.6939 F- 866.839.8595





## **City of Jonesboro Activity Report**

**July 2008**

Vector Disease Control, Inc. (VDCI) provides a proven, scientific approach to mosquito control for the city of Jonesboro. VDCI's operations include larval and adult mosquito surveillance followed by the application of larvicides and adulticides. In addition, our office responds to service requests from the public.

### **Mosquito Surveillance**

VDCI has utilized a total of thirteen (13) New Jersey light traps placed in residential and recreational areas throughout Jonesboro during this reporting period. These traps collected an average of 19.1 mosquitoes per trap night (936 total mosquitoes) during this time. There have been a total of 4 mosquito species collected, with *Anopheles quadrimaculatus* being the most predominant species. With an average trap count of 66, the Ashwood trap has consistently collected the most mosquitoes.

### **Larval Control Activity**

Permanent water, flood water, artificial containers, and drainage system sites are inspected for larval mosquito breeding on a regular basis. In total, 24 site inspections found the presence of mosquito larvae. As a result of these inspections, 70 ounces of Aquabac XT, 9 Altosid SR briquettes and 2 Altosid XR briquettes were applied to these mosquito breeding sites. Additionally, VDCI is continuing to eliminate breeding habitats for artificial container mosquitoes by targeting bird baths, buckets, tires, etc.



### **Adult Mosquito Control Activity**

In response to community events and mosquito surveillance data, VDCI applied the adulticide Permanone 30-30 on twenty-three (23) truck nights for this reporting period. All twenty-three adulticide ULV applications were made with truck-mounted ULV units equipped with GPS-enabled monitors. During this report period, a total of 3,258 spray miles (118,470 acres) were treated with a total of 484 gallons of Permanone 30-30 adulticide in residential and recreational areas. In addition to routine truck spraying, VDCI has responded to 41 service requests and adulticided for all parks and any special events during this month.

### **Summary**

During the month of July, VDCI has continued to provide exceptional control of larval and adult mosquito populations. VDCI will remain diligent in our surveillance and control activities to prevent a significant increase in the mosquito population. Based on recent weather conditions VDCI expects the trend of routine adulticiding and larviciding to continue. However, if VDCI detects a significant rise in the mosquito population we will increase larval and adult control. As always, VDCI welcomes residents with any mosquito-related questions or concerns to contact VDCI's Jonesboro office directly at 870.933.6939.



## Ground Adulticide Applications

Start Date: 7/1/2008      End Date: 7/31/2008

Jonesboro

Month	Date	Municipality	Chemical	Mix Ratio	Trip Miles	Spray Miles	Spray Acres	Gallons Sprayed	
<b>Zone 1 Adulticide Applications</b>									
July 2008	7/3/2008		Permanone 30-30 (432-1235)	1:4.5	0.0	39.0	1418.0	6.0	
	7/3/2008		Permanone 30-30 (432-1235)	1:4.5	0.0	47.0	1709.0	6.0	
	7/3/2008		Permanone 30-30 (432-1235)	1:4.5	0.0	37.0	1345.0	6.0	
	7/4/2008		Permanone 30-30 (432-1235)	1:4.5	0.0	11.0	400.0	4.0	
	7/4/2008		Permanone 30-30 (432-1235)	1:4.5	0.0	31.0	1127.0	5.0	
	7/4/2008		Permanone 30-30 (432-1235)	1:4.5	0.0	26.0	945.0	6.0	
	7/16/2008		Permanone 30-30 (432-1235)	1:4.5	0.0	58.0	2109.0	7.0	
<i>Total Permanone 30-30 (432-1235) Applied:</i>								40.0	
					<b>Zone 1 Totals:</b>	<b>0.0</b>	<b>249.0</b>	<b>9,053.0</b>	<b>40.0</b>
<b>Zone 2 Adulticide Applications</b>									
July 2008	7/10/2008	B	Permanone 30-30 (432-1235)	1:4.5	0.0	38.0	1382.0	6.0	
	7/10/2008	a	Permanone 30-30 (432-1235)	1:4.5	0.0	59.0	2145.0	9.0	
	7/11/2008	b	Permanone 30-30 (432-1235)	1:4.5	0.0	37.0	1345.0	11.0	
	7/15/2008	b	Permanone 30-30 (432-1235)	1:4.5	0.0	41.0	1491.0	9.0	
	7/22/2008	a	Permanone 30-30 (432-1235)	1:4.5	0.0	52.0	1891.0	6.0	
	7/25/2008	b	Permanone 30-30 (432-1235)	1:4.5	0.0	59.0	2145.0	8.0	
<i>Total Permanone 30-30 (432-1235) Applied:</i>								49.0	

Month	Date	Municipality	Chemical	Mix Ratio	Trip Miles	Spray Miles	Spray Acres	Gallons Sprayed
				<b>Zone 2 Totals:</b>	<b>0.0</b>	<b>286.0</b>	<b>10,399.0</b>	<b>49.0</b>
<b>Zone 3 Adulticide Applications</b>								
July 2008	7/8/2008		Permanone 30-30 (432-1235)	1:4.5	0.0	55.0	2000.0	7.0
	7/12/2008		Permanone 30-30 (432-1235)	1:4.5	0.0	59.0	2145.0	6.0
	7/21/2008		Permanone 30-30 (432-1235)	1:4.5	0.0	43.0	1564.0	5.0
				<b>Total Permanone 30-30 (432-1235) Applied:</b>				<b>18.0</b>
				<b>Zone 3 Totals:</b>	<b>0.0</b>	<b>157.0</b>	<b>5,709.0</b>	<b>18.0</b>
<b>Zone 4 Adulticide Applications</b>								
July 2008	7/2/2008		Permanone 30-30 (432-1235)	1:4.5	0.0	53.0	1927.0	9.0
	7/7/2008		Permanone 30-30 (432-1235)	1:4.5	0.0	61.0	2218.0	8.0
	7/9/2008	b	Permanone 30-30 (432-1235)	1:4.5	0.0	45.0	1636.0	9.0
	7/9/2008	a	Permanone 30-30 (432-1235)	1:4.5	0.0	41.0	1491.0	7.0
	7/11/2008	b	Permanone 30-30 (432-1235)	1:4.5	0.0	60.0	2182.0	8.0
	7/14/2008	a	Permanone 30-30 (432-1235)	1:4.5	0.0	42.0	1527.0	6.0
	7/15/2008	b	Permanone 30-30 (432-1235)	1:4.5	0.0	47.0	1709.0	9.0
	7/16/2008	a	Permanone 30-30 (432-1235)	1:4.5	0.0	44.0	1600.0	8.0
	7/18/2008	b	Permanone 30-30 (432-1235)	1:4.5	0.0	45.0	1636.0	12.0
	7/21/2008	a	Permanone 30-30 (432-1235)	1:4.5	0.0	41.0	1491.0	6.0
	7/25/2008	a	Permanone 30-30 (432-1235)	1:4.5	0.0	48.0	1745.0	7.0
	7/26/2008	b	Permanone 30-30 (432-1235)	1:4.5	0.0	41.0	1491.0	7.0
	7/30/2008	a	Permanone 30-30 (432-1235)	1:4.5	0.0	58.0	2109.0	6.0
	7/30/2008	b	Permanone 30-30 (432-1235)	1:4.5	0.0	55.0	2000.0	7.0
				<b>Total Permanone 30-30 (432-1235) Applied:</b>				<b>109.0</b>

Month	Date	Municipality	Chemical	Mix Ratio	Trip Miles	Spray Miles	Spray Acres	Gallons Sprayed	
					<b>Zone 4 Totals:</b>	<b>0.0</b>	<b>681.0</b>	<b>24,762.0</b>	<b>109.0</b>
<b>Zone 5 Adulticide Applications</b>									
July 2008	7/8/2008	B	Permanone 30-30 (432-1235)	1:4.5	0.0	46.0	1673.0	9.0	
	7/9/2008	a	Permanone 30-30 (432-1235)	1:4.5	0.0	46.0	1673.0	6.0	
	7/10/2008	B	Permanone 30-30 (432-1235)	1:4.5	0.0	44.0	1600.0	8.0	
	7/11/2008	a	Permanone 30-30 (432-1235)	1:4.5	0.0	53.0	1927.0	7.0	
	7/12/2008	B	Permanone 30-30 (432-1235)	1:4.5	0.0	41.0	1491.0	7.0	
	7/15/2008	b	Permanone 30-30 (432-1235)	1:4.5	0.0	51.0	1855.0	7.0	
	7/18/2008	b	Permanone 30-30 (432-1235)	1:4.5	0.0	57.0	2073.0	8.0	
	7/25/2008	a	Permanone 30-30 (432-1235)	1:4.5	0.0	163.0	5927.0	5.0	
					<i>Total Permanone 30-30 (432-1235) Applied:</i>				<b>57.0</b>
					<b>Zone 5 Totals:</b>	<b>0.0</b>	<b>501.0</b>	<b>18,219.0</b>	<b>57.0</b>
<b>Zone 6 Adulticide Applications</b>									
July 2008	7/2/2008		Permanone 30-30 (432-1235)	1:4.5	0.0	53.0	1927.0	7.0	
	7/8/2008		Permanone 30-30 (432-1235)	1:4.5	0.0	68.0	2473.0	10.0	
	7/12/2008		Permanone 30-30 (432-1235)	1:4.5	0.0	49.0	1782.0	6.0	
	7/16/2008		Permanone 30-30 (432-1235)	1:4.5	0.0	48.0	1745.0	8.0	
	7/18/2008		Permanone 30-30 (432-1235)	1:4.5	0.0	57.0	2073.0	8.0	
	7/22/2008		Permanone 30-30 (432-1235)	1:4.5	0.0	44.0	1600.0	5.0	
	7/28/2008		Permanone 30-30 (432-1235)	1:4.5	0.0	51.0	1855.0	6.0	
					<i>Total Permanone 30-30 (432-1235) Applied:</i>				<b>50.0</b>
					<b>Zone 6 Totals:</b>	<b>0.0</b>	<b>370.0</b>	<b>13,455.0</b>	<b>50.0</b>
<b>Zone 7 Adulticide Applications</b>									

Month	Date	Municipality	Chemical	Mix Ratio	Trip Miles	Spray Miles	Spray Acres	Gallons Sprayed
July 2008	7/1/2008		Permanone 30-30 (432-1235)	1:4.5	0.0	55.0	2000.0	7.0
	7/21/2008		Permanone 30-30 (432-1235)	1:4.5	0.0	34.0	1236.0	5.0
<i>Total Permanone 30-30 (432-1235) Applied:</i>								12.0
<b>Zone 7 Totals:</b>					<b>0.0</b>	<b>89.0</b>	<b>3,236.0</b>	<b>12.0</b>
<b>Zone 8 Adulticide Applications</b>								
July 2008	7/10/2008	a	Permanone 30-30 (432-1235)	1:4.5	0.0	46.0	1673.0	8.0
	7/11/2008	b	Permanone 30-30 (432-1235)	1:4.5	0.0	49.0	1782.0	8.0
	7/18/2008	a	Permanone 30-30 (432-1235)	1:4.5	0.0	45.0	1636.0	9.0
	7/25/2008	8a and 7	Permanone 30-30 (432-1235)	1:4.5	0.0	48.0	1745.0	11.0
<i>Total Permanone 30-30 (432-1235) Applied:</i>								36.0
<b>Zone 8 Totals:</b>					<b>0.0</b>	<b>188.0</b>	<b>6,836.0</b>	<b>36.0</b>
<b>Zone 9 Adulticide Applications</b>								
July 2008	7/14/2008	9 & 11	Permanone 30-30 (432-1235)	1:4.5	0.0	38.0	1382.0	8.0
	7/21/2008		Permanone 30-30 (432-1235)	1:4.5	0.0	38.0	1382.0	4.0
	7/24/2008		Permanone 30-30 (432-1235)	1:4.5	0.0	50.0	1818.0	5.0
	7/30/2008		Permanone 30-30 (432-1235)	1:4.5	0.0	37.0	1345.0	7.0
<i>Total Permanone 30-30 (432-1235) Applied:</i>								24.0
<b>Zone 9 Totals:</b>					<b>0.0</b>	<b>163.0</b>	<b>5,927.0</b>	<b>24.0</b>
<b>Zone 10 Adulticide Applications</b>								
July 2008	7/1/2008		Permanone 30-30 (432-1235)	1:4.5	0.0	43.0	1564.0	8.0
	7/2/2008		Permanone 30-30 (432-1235)	1:4.5	0.0	38.0	1382.0	7.0
	7/7/2008		Permanone 30-30 (432-1235)	1:4.5	0.0	39.0	1418.0	9.0
	7/9/2008	a	Permanone 30-30 (432-1235)	1:4.5	0.0	53.0	1927.0	7.0

Vector Disease Control, Inc.  
203 East Cross Street  
DeWitt, AR 72042  
1-800-413-4445

Month	Date	Municipality	Chemical	Mix Ratio	Trip Miles	Spray Miles	Spray Acres	Gallons Sprayed
July 2008	7/14/2008	B	Permanone 30-30 (432-1235)	1:4.5	0.0	35.0	1273.0	8.0
	7/17/2008	a	Permanone 30-30 (432-1235)	1:4.5	0.0	44.0	1600.0	6.0
	7/24/2008	B	Permanone 30-30 (432-1235)	1:4.5	0.0	42.0	1527.0	8.0
	7/24/2008	a	Permanone 30-30 (432-1235)	1:4.5	0.0	51.0	1855.0	7.0
	7/28/2008	a	Permanone 30-30 (432-1235)	1:4.5	0.0	46.0	1673.0	5.0
<i>Total Permanone 30-30 (432-1235) Applied:</i>								<i>65.0</i>
<b>Zone 10 Totals:</b>					<b>0.0</b>	<b>391.0</b>	<b>14,219.0</b>	<b>65.0</b>

**Zone 11 Adulticide Applications**

July 2008	7/8/2008	9 & 11	Permanone 30-30 (432-1235)	1:4.5	0.0	52.0	1891.0	8.0
	7/10/2008		Permanone 30-30 (432-1235)	1:4.5	0.0	43.0	1564.0	6.0
	7/17/2008	9 & 11	Permanone 30-30 (432-1235)	1:4.5	0.0	49.0	1782.0	5.0
	7/26/2008		Permanone 30-30 (432-1235)	1:4.5	0.0	39.0	1418.0	5.0
<i>Total Permanone 30-30 (432-1235) Applied:</i>								<i>24.0</i>
<b>Zone 11 Totals:</b>					<b>0.0</b>	<b>183.0</b>	<b>6,655.0</b>	<b>24.0</b>
<b>Grand Totals:</b>					<b>0.0</b>	<b>3,258.0</b>	<b>118,470.0</b>	<b>484.0</b>





# Service Request Adulticide Applications

Start Date: 7/1/2008

End Date: 7/31/2008

Jonesboro

Date	Location	Chemical	Mix Ratio	Ounces Sprayed
<b>Zone 2 Adulticide Applications</b>				
7/1/2008	701 Stonebridge	Permanone 30-30 (432-1235)	1:4.5	10.0
7/1/2008	1202 Rainwood	Permanone 30-30 (432-1235)	1:4.5	4.0
7/18/2008	1701 Dupwe	Permanone 30-30 (432-1235)	1:4.5	8.0
7/18/2008	1200 Stonemill	Permanone 30-30 (432-1235)	1:4.5	8.0
7/21/2008	801 Wedgewood Cove	Permanone 30-30 (432-1235)	1:4.5	20.0
7/28/2008	1935 Rosemond	Permanone 30-30 (432-1235)	1:4.5	4.0
<b>Total Permanone 30-30 (432-1235) Applied:</b>				54.0 (0.4 gals)
7/11/2008	11 Plantation Oaks	Scourge RTU	Neat	8.0
7/16/2008	1001 Union	Scourge RTU	Neat	12.0
7/16/2008	1813 Kenwood	Scourge RTU	Neat	7.0
<b>Total Scourge RTU Applied:</b>				27.0 (0.2 gals)
<b>Zone 4 Adulticide Applications</b>				
7/1/2008	206 E. Lawson	Permanone 30-30 (432-1235)	1:4.5	6.0
7/2/2008	613 Fox Run Dr.	Permanone 30-30 (432-1235)	1:4.5	10.0
7/2/2008	5800 Southwick	Permanone 30-30 (432-1235)	1:4.5	10.0
7/8/2008	4310 Knollcrest	Permanone 30-30 (432-1235)	1:4.5	4.0
7/8/2008	921 E. Craighead Forest	Permanone 30-30 (432-1235)	1:4.5	10.0
7/11/2008	1217 Layman	Permanone 30-30 (432-1235)	1:4.5	14.0
7/30/2008	2021 Valley View Dr.	Permanone 30-30 (432-1235)	1:4.5	16.0
7/30/2008	5517 Kersey Lane	Permanone 30-30 (432-1235)	1:4.5	8.0
<b>Total Permanone 30-30 (432-1235) Applied:</b>				78.0 (0.6 gals)
7/8/2008	1304 Country Manor	Scourge RTU	Neat	8.0
7/10/2008	813 Sherwood Oaks	Scourge RTU	Neat	12.0
<b>Total Scourge RTU Applied:</b>				20.0 (0.2 gals)
<b>Zone 5 Adulticide Applications</b>				
7/8/2008	2300 Oakbrook	Permanone 30-30 (432-1235)	1:4.5	10.0
7/18/2008	3701 Beacon	Permanone 30-30 (432-1235)	1:4.5	8.0
7/21/2008	3027 Glover	Permanone 30-30 (432-1235)	1:4.5	40.0

Vector Disease Control, Inc.  
 203 East Cross Street  
 DeWitt, AR 72042  
 1-800-413-4445

<b>Date</b>	<b>Location</b>	<b>Chemical</b>	<b>Mix Ratio</b>	<b>Ounces Sprayed</b>
7/23/2008	2105 Fox Meadow	Permanone 30-30 (432-1235)	1:4.5	24.0
7/30/2008	1900 Pine Valley	Permanone 30-30 (432-1235)	1:4.5	8.0
<b>Total Permanone 30-30 (432-1235) Applied:</b>				90.0 (0.7 gals)
7/8/2008	2105 Fox Meadow	Scourge RTU	Neat	15.0
<b>Total Scourge RTU Applied:</b>				15.0 (0.1 gals)
<b>Zone 6 Adulticide Applications</b>				
7/8/2008	4217 Oakhill	Scourge RTU	Neat	8.0
<b>Total Scourge RTU Applied:</b>				8.0 (0.1 gals)
<b>Zone 7 Adulticide Applications</b>				
7/16/2008	2207 Greensboro Rd	Scourge RTU	Neat	7.0
<b>Total Scourge RTU Applied:</b>				7.0 (0.1 gals)
<b>Zone 8 Adulticide Applications</b>				
7/18/2008	1000 W. Matthews	Permanone 30-30 (432-1235)	1:4.5	16.0
7/18/2008	1105 Cardinal	Permanone 30-30 (432-1235)	1:4.5	18.0
7/18/2008	1415 Hidden Cove	Permanone 30-30 (432-1235)	1:4.5	8.0
7/31/2008	305 W. Stroud	Permanone 30-30 (432-1235)	1:4.5	10.0
<b>Total Permanone 30-30 (432-1235) Applied:</b>				52.0 (0.4 gals)
7/3/2008	1605 Virginia	Scourge RTU	Neat	8.0
7/11/2008	1103 Wilkins	Scourge RTU	Neat	12.0
<b>Total Scourge RTU Applied:</b>				20.0 (0.2 gals)
<b>Zone 9 Adulticide Applications</b>				
7/15/2008	4904 E. Highland	Permanone 30-30 (432-1235)	1:4.5	8.0
7/17/2008	806 Easley Lane	Permanone 30-30 (432-1235)	Neat	8.0
<b>Total Permanone 30-30 (432-1235) Applied:</b>				16.0 (0.1 gals)
7/11/2008	2204 Barnhill Rd	Scourge RTU	Neat	8.0
<b>Total Scourge RTU Applied:</b>				8.0 (0.1 gals)
<b>Zone 10 Adulticide Applications</b>				
7/17/2008	1908 Cathryn Cir	Permanone 30-30 (432-1235)	1:4.5	8.0
<b>Total Permanone 30-30 (432-1235) Applied:</b>				8.0 (0.1 gals)
7/3/2008	2605 Harrison Cove	Scourge RTU	Neat	4.0
7/3/2008	2201 Quail Ridge Rd	Scourge RTU	Neat	3.0
7/8/2008	3106 Woodsprings Rd	Scourge RTU	Neat	16.0

Vector Disease Control, Inc.  
203 East Cross Street  
DeWitt, AR 72042  
1-800-413-4445

Date	Location	Chemical	Mix Ratio	Ounces Sprayed
<i>Total Scourge RTU Applied:</i>				23.0 (0.2 gals)
<b>Zone 11 Adulticide Applications</b>				
7/3/2008	3109 Parkwood	Permanone 30-30 (432-1235)	1:4.5	6.0
<i>Total Permanone 30-30 (432-1235) Applied:</i>				6.0 (0.0 gals)
<i>Grand Totals</i>				432.0 (3.4 gals)

Vector Disease Control, Inc.  
203 East Cross Street  
DeWitt, AR 72042  
1-800-413-4445



# Larvicide Applications

Start Date: 7/1/2008

End Date: 7/31/2008

Jonesboro

Date	Location	Habitat	No. of Larvae	Larvicide	Amount Applied (oz.)
<b>Zone 1 Applications</b>					
7/22/2008	Hathcoat	ditch	11-50	Aquabac XT (62637-1)	7.00
					<i>Total Ounces Applied:</i> 7.00
					<i>Total Larvicide Applied in Zone 1:</i> 7.00
<b>Zone 2 Applications</b>					
7/17/2008	W. Washington	ditch	1-10	Aquabac XT (62637-1)	3.50
7/23/2008	Frierson	ditch	1-10	Aquabac XT (62637-1)	3.50
	Valley Dr.	ditch	1-10	Aquabac XT (62637-1)	3.50
					<i>Total Ounces Applied:</i> 10.50
					<i>Total Larvicide Applied in Zone 2:</i> 10.50
<b>Zone 6 Applications</b>					
7/7/2008	1404 Old Bridger Rd	ditch	1-10	Altosid SR (2724-446)	1.00
					<i>Total Ounces Applied:</i> 1.00
7/16/2008	Whitecliff	standing water temporary	1-10	Aquabac XT (62637-1)	14.00
					<i>Total Ounces Applied:</i> 14.00
					<i>Total Larvicide Applied in Zone 6:</i> 15.00
<b>Zone 9 Applications</b>					
7/14/2008	903 Easley Lane	ditch	1-10	Altosid SR (2724-446)	2.00
	Barnhill Rd	ditch	1-10	Altosid SR (2724-446)	1.00
7/17/2008	Easley Lane	ditch	1-10	Altosid SR (2724-446)	4.00
					<i>Total Ounces Applied:</i> 7.00
7/14/2008	2415 Industrial Rd.	ditch	11-50	Aquabac XT (62637-1)	7.00

Date	Location	Habitat	No. of Larvae	Larvicide	Amount Applied (oz.)
7/14/2008	2901 Commerce	ditch	1-10	Aquabac XT (62637-1)	3.50
	4912 Highland Dr.	ditch	1-10	Aquabac XT (62637-1)	1.75
	N. Commerce Rd.	ditch	1-10	Aquabac XT (62637-1)	1.75
<i>Total Ounces Applied:</i>					<i>14.00</i>
<i>Total Larvicide Applied in Zone 9:</i>					<i>21.00</i>
<b>Zone 10 Applications</b>					
7/11/2008	Flemon/Friendly Hope Rd.	ditch	1-10	Altosid SR (2724-446)	1.00
<i>Total Ounces Applied:</i>					<i>1.00</i>
7/17/2008	3209 Lacosta	standing water permanent	1-10	Aquabac XT (62637-1)	1.75
	Duckswater	standing water permanent	1-10	Aquabac XT (62637-1)	1.75
<i>Total Ounces Applied:</i>					<i>3.50</i>
<i>Total Larvicide Applied in Zone 10:</i>					<i>4.50</i>
<b>Zone 11 Applications</b>					
7/16/2008	3500 Race St.	ditch	1-10	Aquabac XT (62637-1)	3.50
	3521 Airport Rd.	ditch	1-10	Aquabac XT (62637-1)	3.50
<i>Total Ounces Applied:</i>					<i>7.00</i>
<i>Total Larvicide Applied in Zone 11:</i>					<i>7.00</i>
<i>Overall Total Ounces Applied</i>					<i>65.00</i>



# Adult Mosquito Surveillance Report

Start Date: 7/1/2008

End Date: 7/31/2008

Jonesboro

Trap Location	Date Trap Set	Trap Type	Mosquito Species	No. Collected	
<b>Zone 1 Collections</b>					
Shady Lane	7/7/2008	NJ Light Trap	<i>Anopheles quadrimaculatus</i>	3	
			<i>Psorophora columbiae</i>	27	
Shady Lane	7/15/2008	NJ Light Trap	<i>Anopheles quadrimaculatus</i>	3	
			<i>Psorophora columbiae</i>	14	
Shady Lane	7/22/2008	NJ Light Trap	<i>Anopheles quadrimaculatus</i>	9	
			<i>Psorophora columbiae</i>	41	
Shady Lane	7/28/2008	NJ Light Trap	<i>Anopheles quadrimaculatus</i>	16	
			<i>Psorophora columbiae</i>	4	
				<b>Trap Total</b>	117 (Avg. 29.2)
Sugar Ridge	7/7/2008	NJ Light Trap	<i>Aedes vexans</i>	5	
			<i>Anopheles quadrimaculatus</i>	2	
			<i>Psorophora columbiae</i>	2	
Sugar Ridge	7/15/2008	NJ Light Trap	<i>Anopheles quadrimaculatus</i>	11	
Sugar Ridge	7/22/2008	NJ Light Trap	<i>Aedes vexans</i>	1	
			<i>Anopheles quadrimaculatus</i>	7	
			<i>Psorophora columbiae</i>	1	
Sugar Ridge	7/28/2008	NJ Light Trap	No Mosquitoes	0	
				<b>Trap Total</b>	29 (Avg. 7.2)
<b>Zone 2 Collections</b>					
Strawfloor	7/7/2008	NJ Light Trap	<i>Aedes vexans</i>	1	
			<i>Anopheles quadrimaculatus</i>	3	
			<i>Psorophora columbiae</i>	1	
Strawfloor	7/15/2008	NJ Light Trap	<i>Anopheles quadrimaculatus</i>	11	
Strawfloor	7/22/2008	NJ Light Trap	<i>Anopheles quadrimaculatus</i>	5	
Strawfloor	7/28/2008	NJ Light Trap	<i>Anopheles quadrimaculatus</i>	10	
				<b>Trap Total</b>	31 (Avg. 7.8)
<b>Zone 3 Collections</b>					
Ridgepointe	7/1/2008	NJ Light Trap	<i>Anopheles quadrimaculatus</i>	9	

Vector Disease Control, Inc.  
 203 East Cross Street  
 DeWitt, AR 72042  
 1-800-413-4445

Trap Location	Date Trap Set	Trap Type	Mosquito Species	No. Collected
Ridgepointe	7/7/2008	NJ Light Trap	<i>Anopheles quadrimaculatus</i>	19
			<i>Psorophora columbiae</i>	1
Ridgepointe	7/15/2008	NJ Light Trap	<i>Aedes vexans</i>	1
			<i>Anopheles quadrimaculatus</i>	16
			<i>Psorophora columbiae</i>	3
Ridgepointe	7/21/2008	NJ Light Trap	<i>Anopheles quadrimaculatus</i>	42
			<i>Psorophora columbiae</i>	2
<b>Trap Total</b>				93 (Avg. 23.2)

#### Zone 4 Collections

Partridge	7/7/2008	NJ Light Trap	<i>Aedes vexans</i>	4
			<i>Anopheles quadrimaculatus</i>	11
			<i>Psorophora columbiae</i>	2
Partridge	7/15/2008	NJ Light Trap	<i>Anopheles quadrimaculatus</i>	8
			<i>Psorophora columbiae</i>	3
Partridge	7/21/2008	NJ Light Trap	<i>Anopheles quadrimaculatus</i>	10
			<i>Psorophora columbiae</i>	8
<b>Trap Total</b>				46 (Avg. 15.3)

#### Zone 5 Collections

Frog Pond	7/1/2008	NJ Light Trap	<i>Anopheles quadrimaculatus</i>	3
			<i>Psorophora columbiae</i>	2
Frog Pond	7/7/2008	NJ Light Trap	<i>Anopheles quadrimaculatus</i>	7
			<i>Psorophora columbiae</i>	21
Frog Pond	7/15/2008	NJ Light Trap	<i>Anopheles quadrimaculatus</i>	9
			<i>Psorophora columbiae</i>	5
Frog Pond	7/21/2008	NJ Light Trap	<i>Aedes vexans</i>	2
			<i>Anopheles quadrimaculatus</i>	3
			<i>Psorophora columbiae</i>	7
<b>Trap Total</b>				59 (Avg. 14.8)

#### Zone 6 Collections

Oakhill	7/7/2008	NJ Light Trap	<i>Anopheles quadrimaculatus</i>	9
			<i>Psorophora columbiae</i>	11
Oakhill	7/15/2008	NJ Light Trap	<i>Anopheles quadrimaculatus</i>	11
			<i>Psorophora columbiae</i>	15
Oakhill	7/22/2008	NJ Light Trap	<i>Anopheles quadrimaculatus</i>	14

Vector Disease Control, Inc.  
203 East Cross Street  
DeWitt, AR 72042  
1-800-413-4445

Trap Location	Date Trap Set	Trap Type	Mosquito Species	No. Collected
Oakhill	7/22/2008	NJ Light Trap	<i>Psorophora columbiae</i>	1
Oakhill	7/28/2008	NJ Light Trap	<i>Anopheles quadrimaculatus</i>	21
			<i>Psorophora columbiae</i>	1
<b>Trap Total</b>				83 (Avg. 20.8)
Pleasantview	7/7/2008	NJ Light Trap	<i>Aedes vexans</i>	4
			<i>Anopheles quadrimaculatus</i>	3
			<i>Psorophora columbiae</i>	9
Pleasantview	7/15/2008	NJ Light Trap	<i>Anopheles quadrimaculatus</i>	14
			<i>Psorophora columbiae</i>	4
Pleasantview	7/28/2008	NJ Light Trap	<i>Anopheles quadrimaculatus</i>	32
<b>Trap Total</b>				66 (Avg. 22)

#### Zone 8 Collections

Briarcrest	7/1/2008	NJ Light Trap	<i>Aedes vexans</i>	2
			<i>Anopheles quadrimaculatus</i>	4
			<i>Psorophora columbiae</i>	2
Briarcrest	7/7/2008	NJ Light Trap	<i>Aedes vexans</i>	2
			<i>Anopheles quadrimaculatus</i>	6
Briarcrest	7/15/2008	NJ Light Trap	<i>Anopheles quadrimaculatus</i>	20
Briarcrest	7/21/2008	NJ Light Trap	<i>Aedes vexans</i>	1
			<i>Anopheles quadrimaculatus</i>	7
<b>Trap Total</b>				44 (Avg. 11)
Gerald's	7/1/2008	NJ Light Trap	<i>Anopheles quadrimaculatus</i>	2
Gerald's	7/7/2008	NJ Light Trap	<i>Anopheles quadrimaculatus</i>	1
Gerald's	7/15/2008	NJ Light Trap	<i>Anopheles quadrimaculatus</i>	3
Gerald's	7/21/2008	NJ Light Trap	<i>Anopheles quadrimaculatus</i>	2
<b>Trap Total</b>				8 (Avg. 2)
Jefferson	7/28/2008	NJ Light Trap	<i>Anopheles quadrimaculatus</i>	11
<b>Trap Total</b>				11 (Avg. 11)
McClure	7/7/2008	NJ Light Trap	<i>Aedes vexans</i>	7
			<i>Anopheles quadrimaculatus</i>	3
McClure	7/15/2008	NJ Light Trap	<i>Anopheles quadrimaculatus</i>	10
McClure	7/22/2008	NJ Light Trap	<i>Aedes vexans</i>	1
			<i>Anopheles quadrimaculatus</i>	5
<b>Trap Total</b>				26 (Avg. 8.7)



Trap Location	Date Trap Set	Trap Type	Mosquito Species	No. Collected
<b>Zone 9 Collections</b>				
Cottag Home	7/1/2008	NJ Light Trap	<i>Anopheles quadrimaculatus</i>	8
			<i>Psorophora columbiae</i>	6
Cottag Home	7/7/2008	NJ Light Trap	<i>Aedes vexans</i>	3
			<i>Anopheles quadrimaculatus</i>	15
			<i>Culex restuans</i>	1
			<i>Psorophora columbiae</i>	7
Cottag Home	7/15/2008	NJ Light Trap	<i>Anopheles quadrimaculatus</i>	14
			<i>Psorophora columbiae</i>	5
<b>Trap Total</b>				59 (Avg. 19.7)

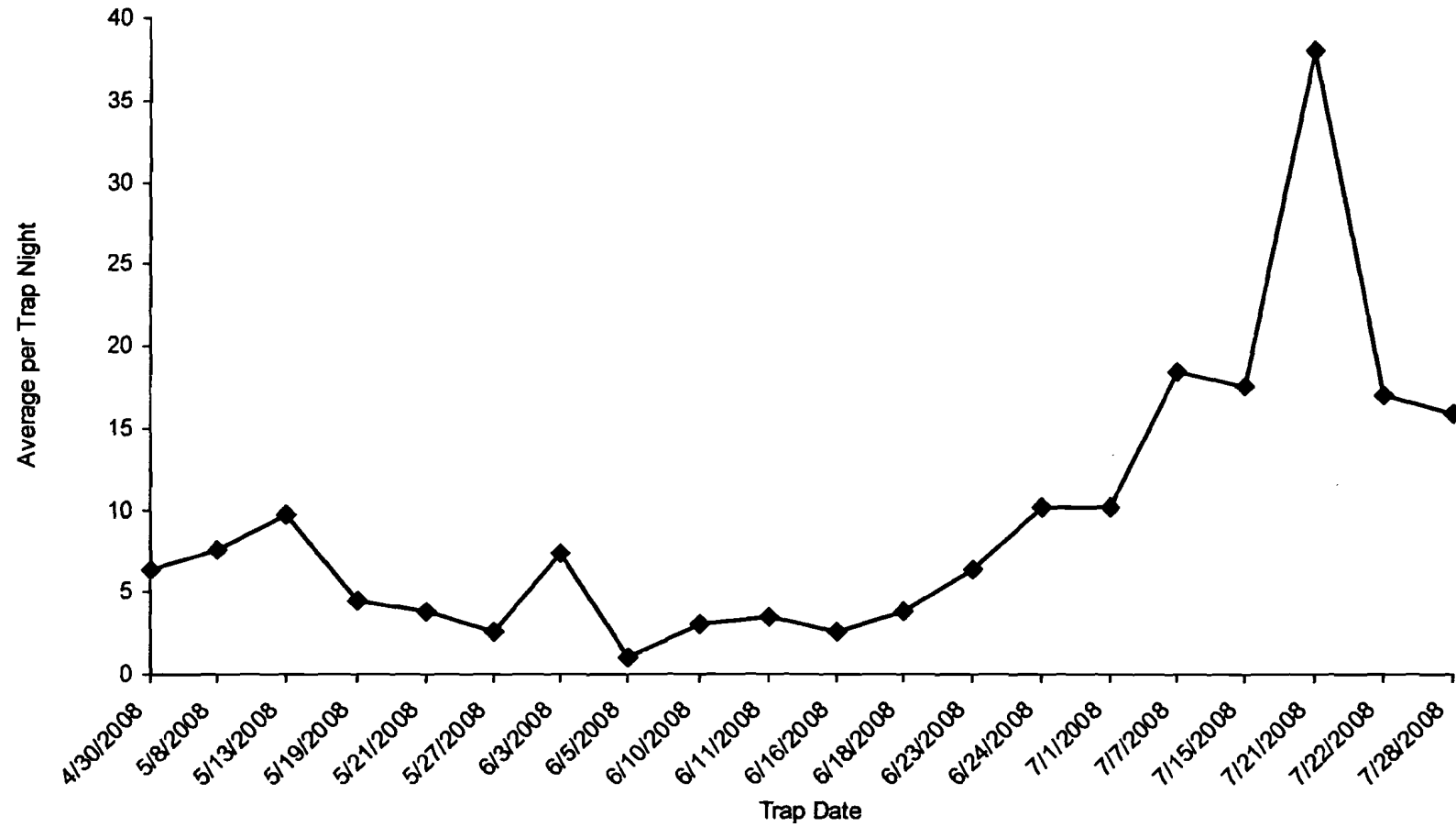
<b>Zone 10 Collections</b>				
Ashwood	7/1/2008	NJ Light Trap	<i>Aedes vexans</i>	11
			<i>Anopheles quadrimaculatus</i>	11
			<i>Psorophora columbiae</i>	1
Ashwood	7/7/2008	NJ Light Trap	<i>Aedes vexans</i>	9
			<i>Anopheles quadrimaculatus</i>	40
Ashwood	7/15/2008	NJ Light Trap	<i>Anopheles quadrimaculatus</i>	48
Ashwood	7/21/2008	NJ Light Trap	<i>Anopheles quadrimaculatus</i>	144
<b>Trap Total</b>				264 (Avg. 66)

<b>Overall Trap Total</b>	936
<b>Overall Trap Average</b>	19.1



# Adult Mosquito Surveillance Summary

Jonesboro

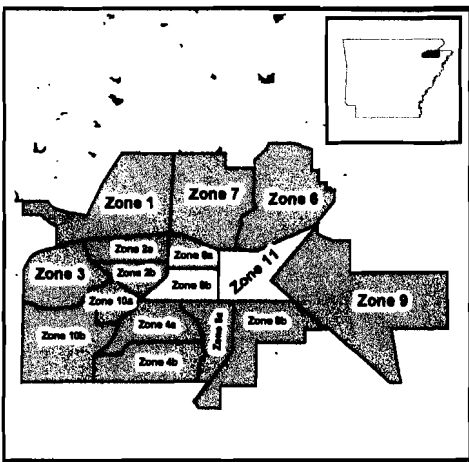


Vector Disease Control, Inc.  
203 East Cross Street  
DeWitt, AR 72042  
1-800-413-4445



# The City of Jonesboro, Arkansas

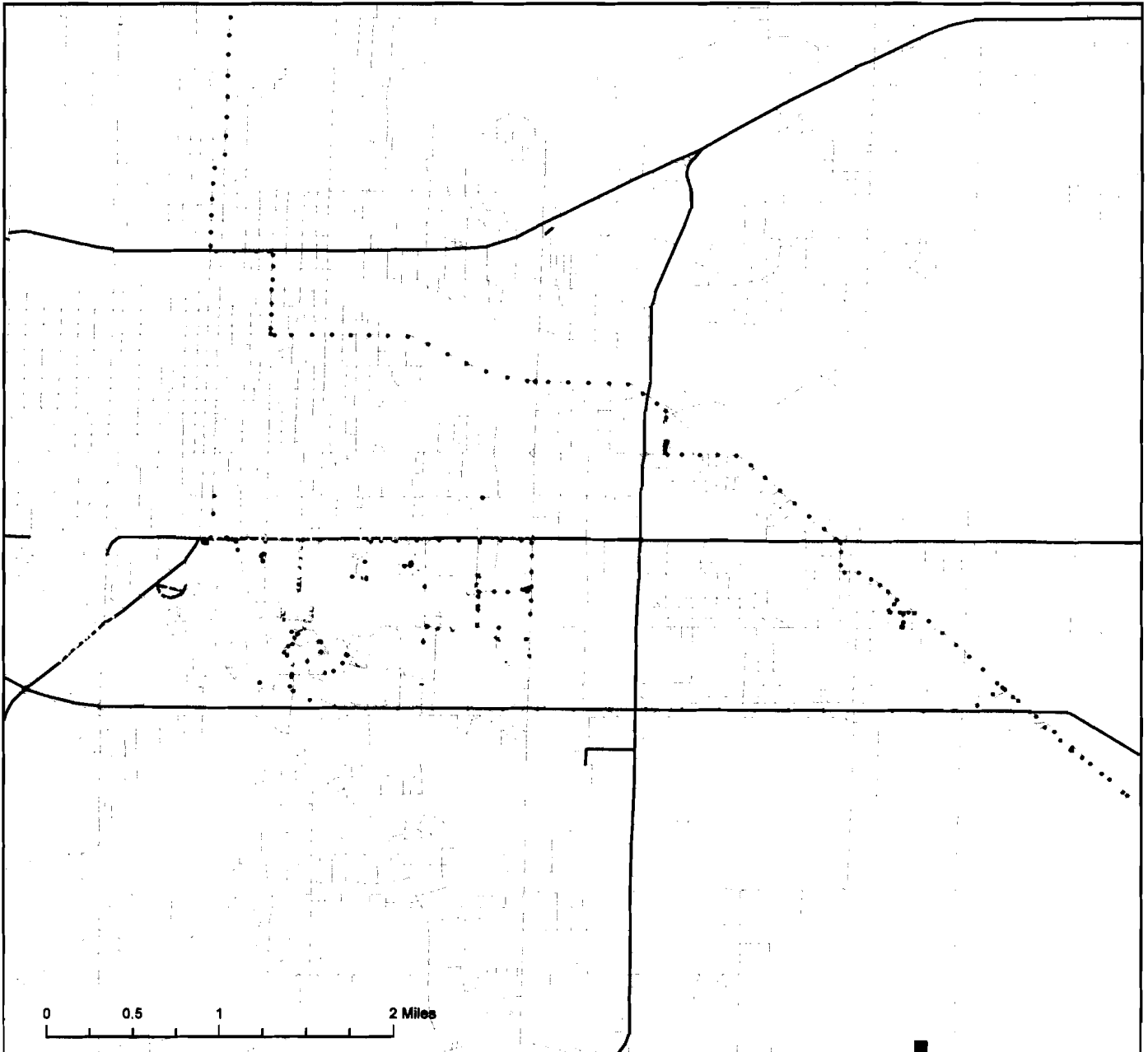
## Ground Adulticide Application Date: July 11, 2008



### Sprayer Status

- Spray Off
- Spray On

Chemical: Permanone 30-30  
 Quantity Used: 8.8 gal  
 Miles Treated: 34.7  
 Acres Treated: 1,259.0

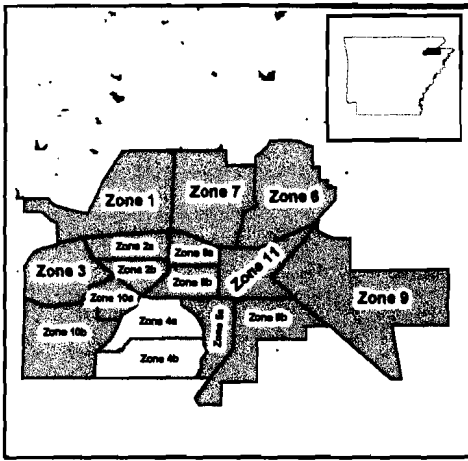


Vector Disease Control, Inc.  
 PO Box 566  
 DeWitt, AR 72042

These map products were developed for use by VDCI for its internal purposes only and were not designed or intended for general use by members of the public. VDCI makes no representation or warranty as to its accuracy, timeliness, or completeness, and in particular, its accuracy in labeling or displaying dimensions, contours, property boundaries, or placement or location of any map features thereon. ©2008 VDCI. All rights reserved.

# The City of Jonesboro, Arkansas

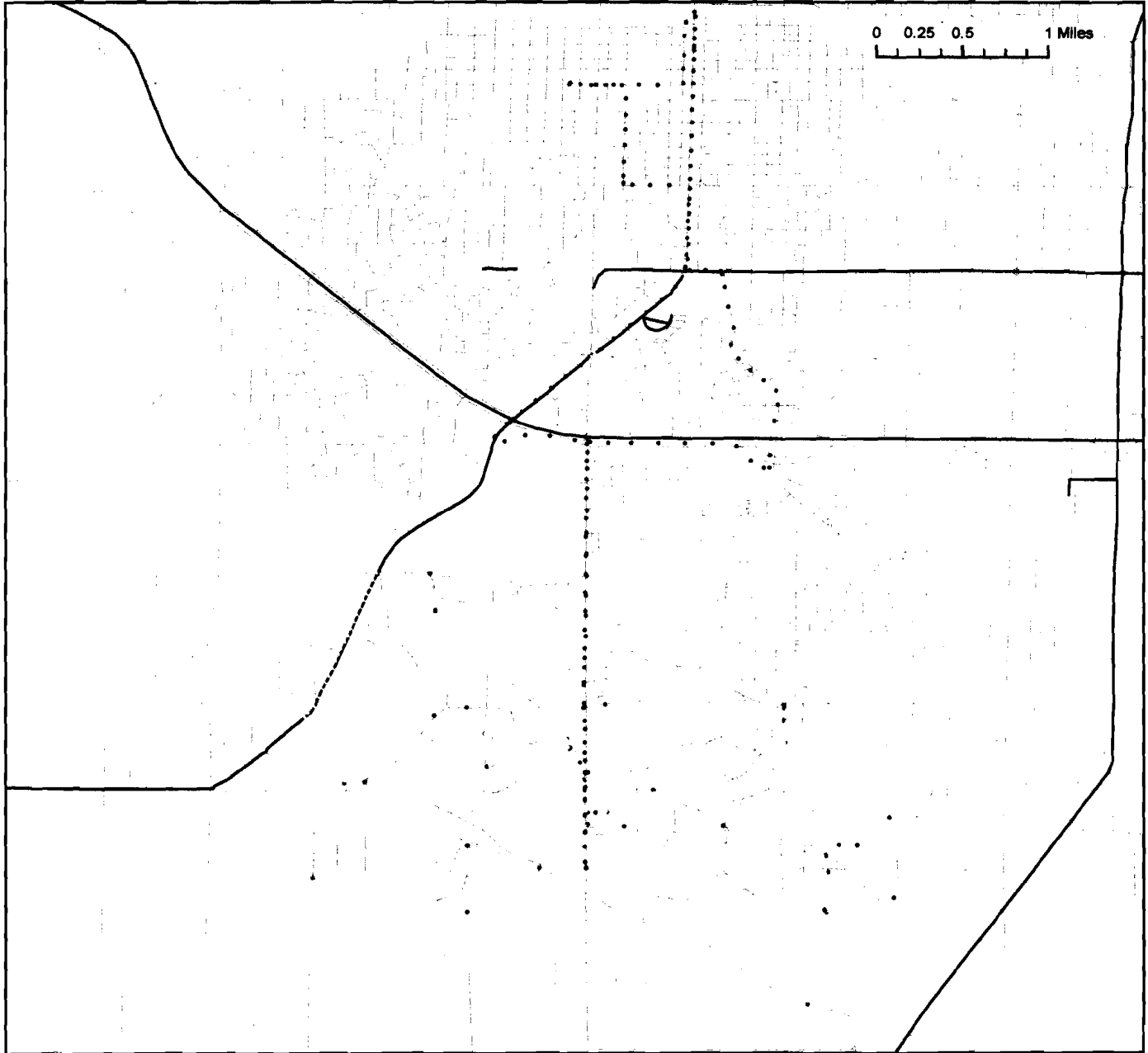
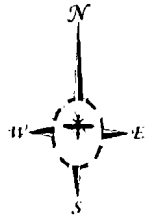
Ground Adulticide Application Date:  
July 28, 2008



### Sprayer Status

- Spray Off
- Spray On

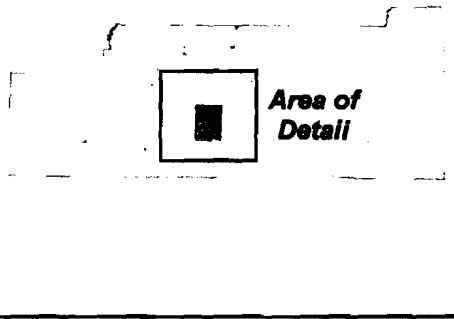
Chemical: Permanone 30-30  
Quantity Used: 9.5 gal  
Miles Treated: 38.8  
Acres Treated: 1,408.0



Vector Disease Control, Inc.  
PO Box 566  
DeWitt, AR 72042

These map products were developed for use by VDCI for its internal purposes only and were not designed or intended for general use by members of the public. VDCI makes no representation or warranty as to its accuracy, timeliness, or completeness, and in particular, its accuracy in labeling or displaying dimensions, contours, property boundaries, or placement or location of any map features thereon. © 2008 VDCI. All rights reserved.

# Craighead County

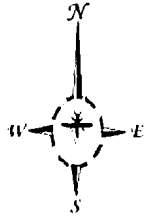


# The City of Jonesboro, Arkansas

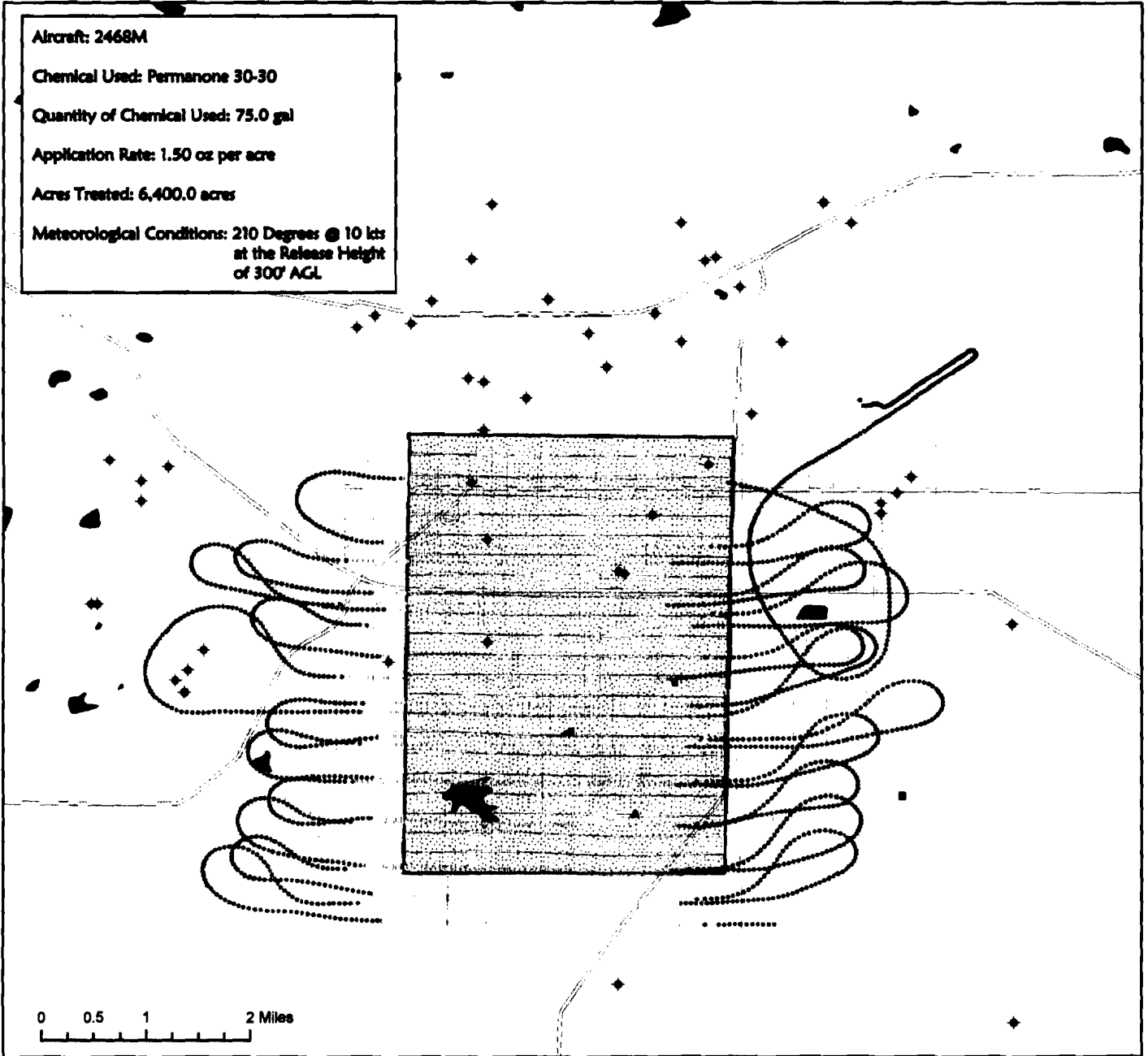
Aerial Adulticide Application Date:  
July 3, 2008



- Flight Line
- Spray Off
- Spray On
- Towers
- Spray Offset
- Spray Blocks



Aircraft: 2468M  
Chemical Used: Permanone 30-30  
Quantity of Chemical Used: 75.0 gal  
Application Rate: 1.50 oz per acre  
Acres Treated: 6,400.0 acres  
Meteorological Conditions: 210 Degrees @ 10 kts  
at the Release Height  
of 300' AGL



Vector Disease Control, Inc.  
PO Box 566  
DeWitt, AR 72042

These map products were developed for use by VDCI for its internal purposes only and were not designed or intended for general use by members of the public. VDCI makes no representation or warranty as to its accuracy, timeliness, or completeness, and in particular, its accuracy in labeling or displaying dimensions, contours, property boundaries, or placement or location of any map features thereon. © 2008 VDCI. All rights reserved.