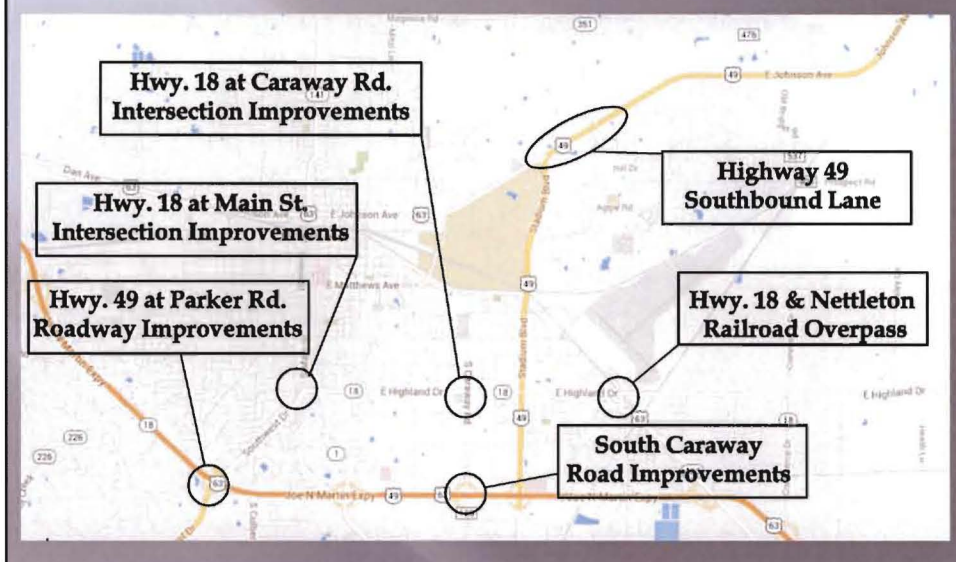


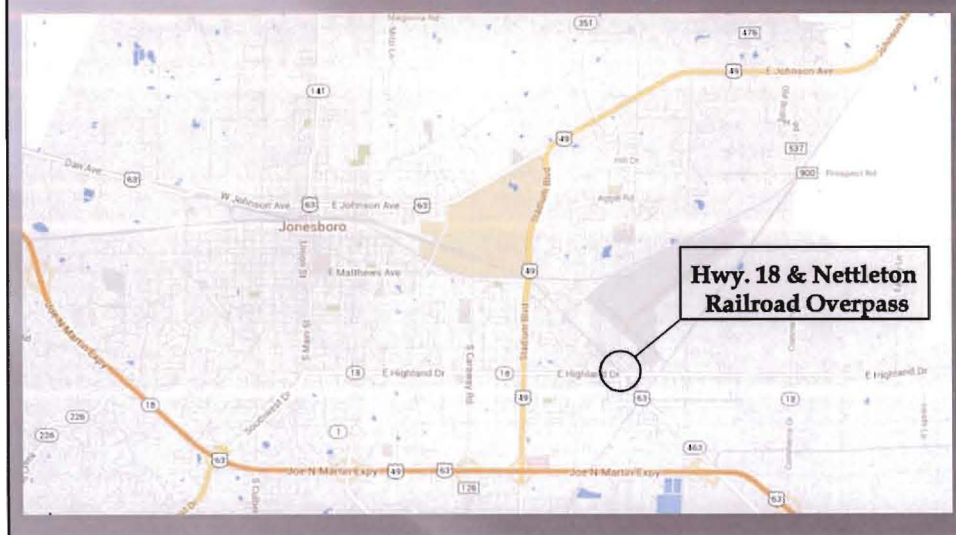
**Capacity Improvement
Projects**

A smaller version of the circular logo is positioned at the top center of the slide. Below it, the text 'Capacity Improvement Projects' is displayed in a large, bold, red serif font, centered on the dark purple background.

Project Locations



Hwy. 18 at Nettleton Ave. Railroad Overpass



Hwy. 18 at Nettleton Ave.



Frequent Train Traffic

- ▣ **March 11th**
Train Stopped 53 Min from 3:19 pm-4:12 pm (School Peak)

- ▣ **March 22nd**
Train Stopped 58 Min from 7:18 am-8:16 am (Morning Peak)

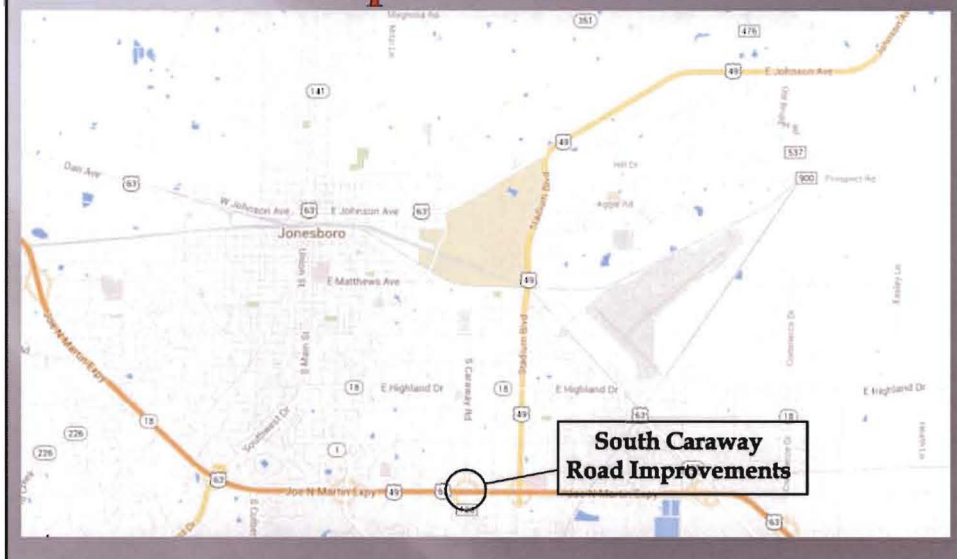
- ▣ **June 15nd**
38 Train Events
Intersection Shut Down For 2 Hours 38 Minutes Throughout the Day

▣ [hwy18.mov](#)

Possible Solution

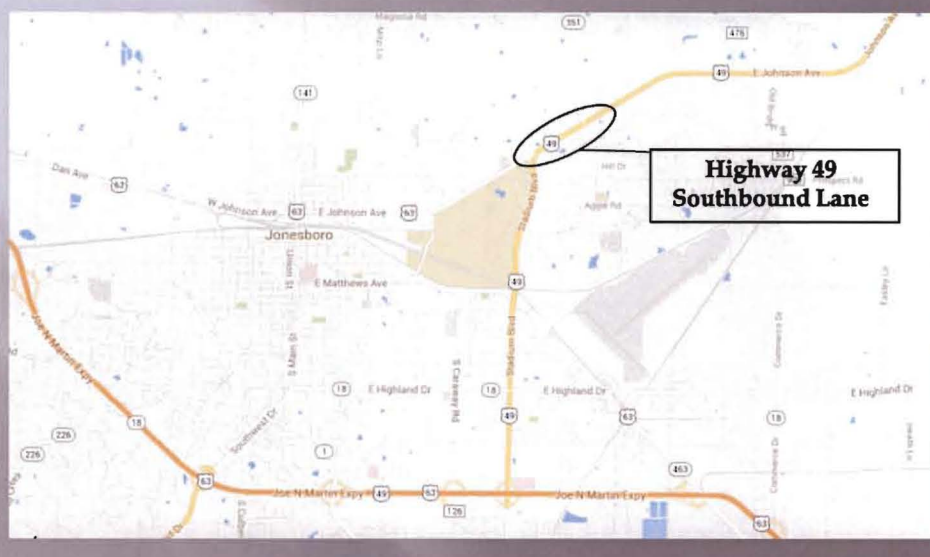


South Caraway Road Improvements

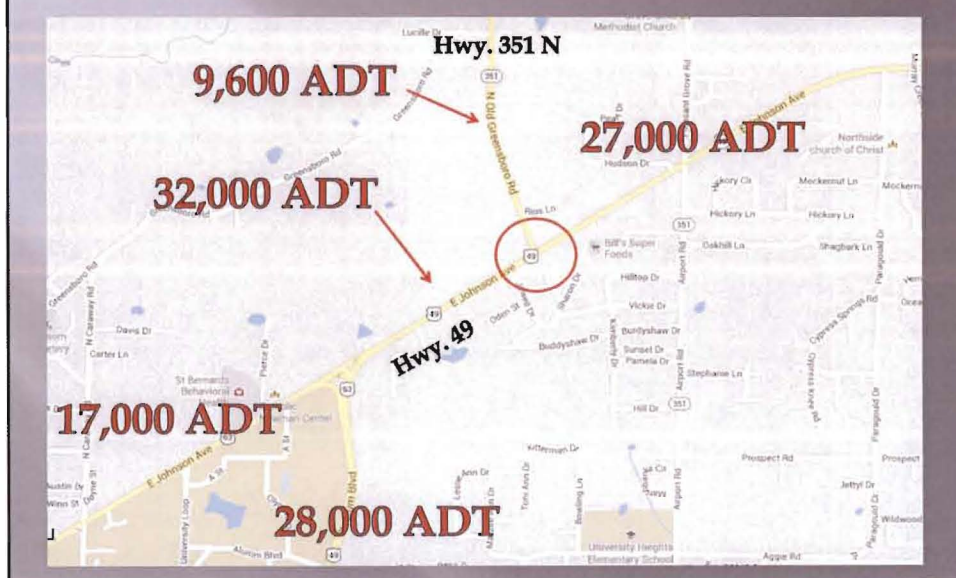




Hwy. 49 Southbound Lane



Hwy. 49 at Hwy. 351 N.



Morning Peak Queuing



Possible Solution



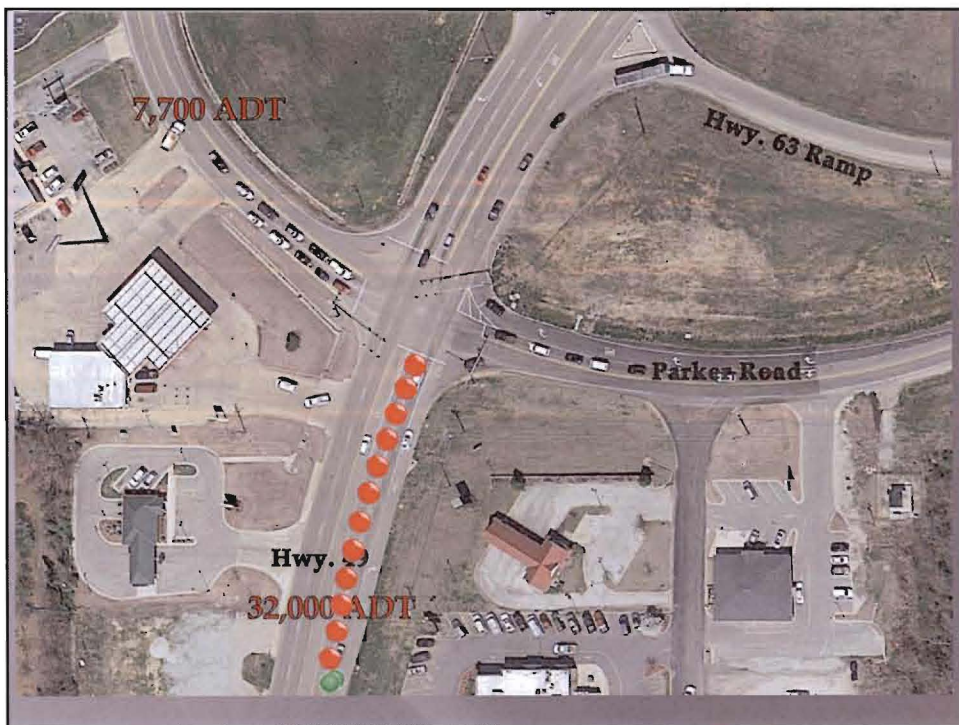
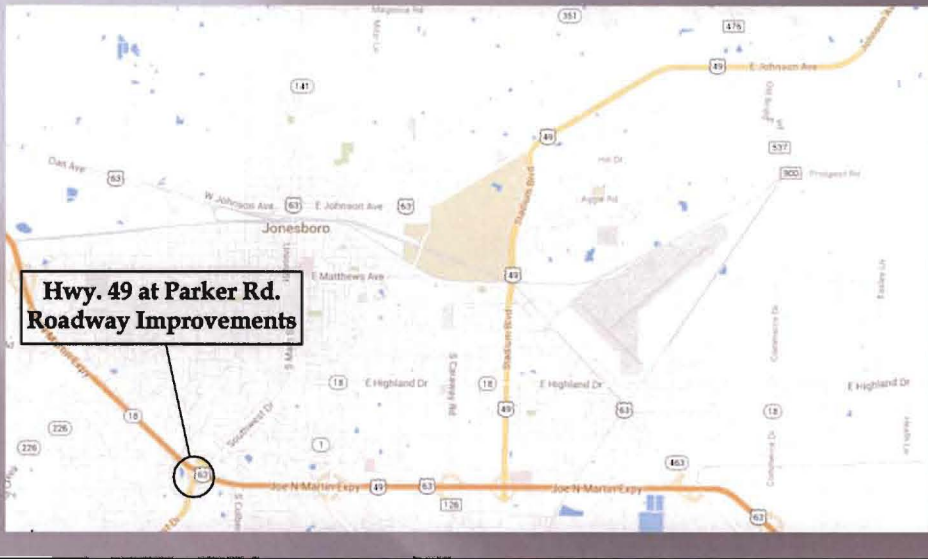
Add Lane at Hwy. 49 at Hwy. 351

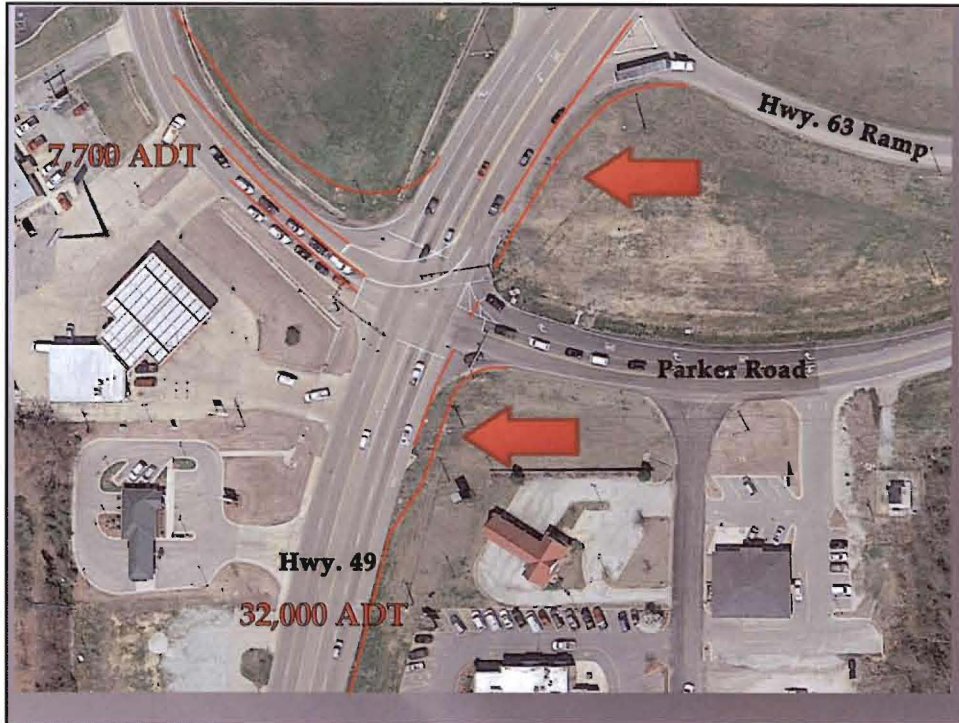


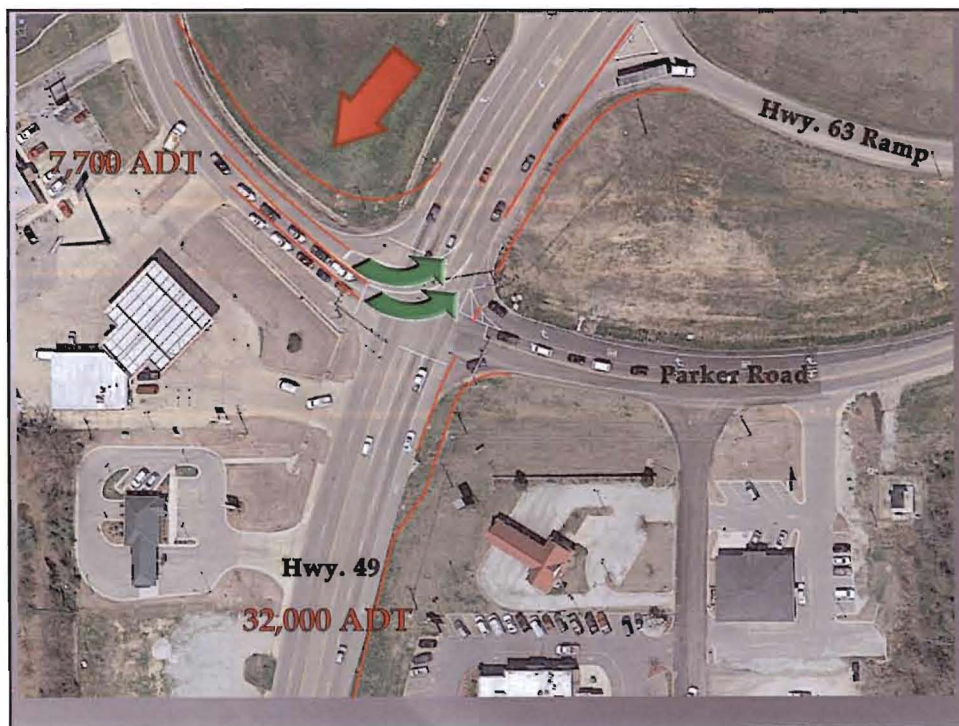
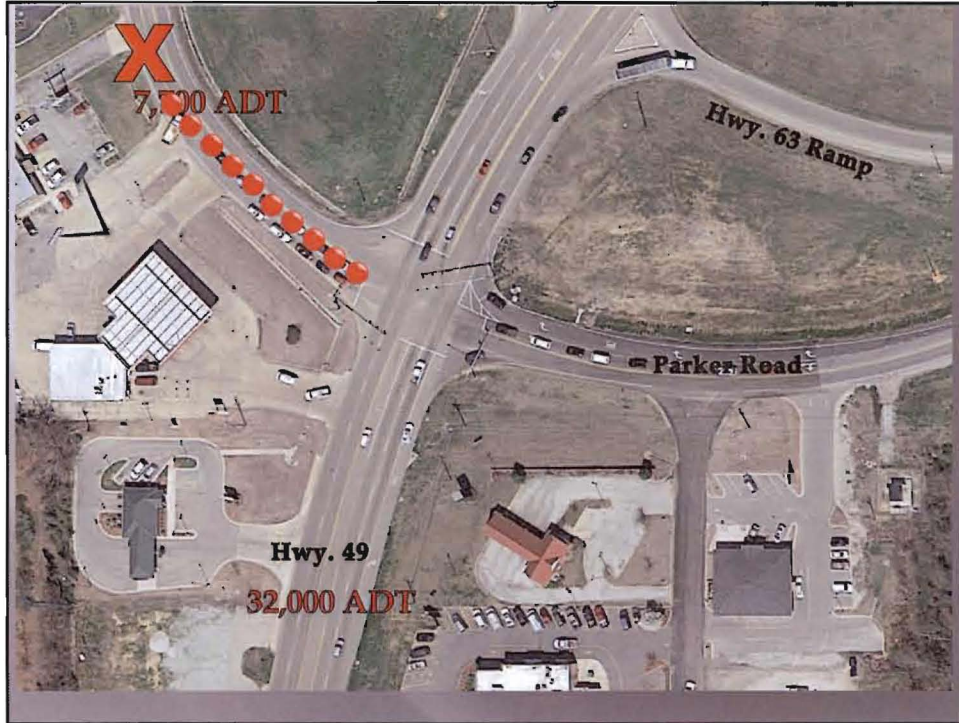
Add Lane at Hwy. 49 at Hwy. 351



Hwy. 49 at Parker Rd.









Hwy. 18 at Caraway Rd.



Highway 18 at Caraway Rd.

