

OTHERS

WOODSPRINGS

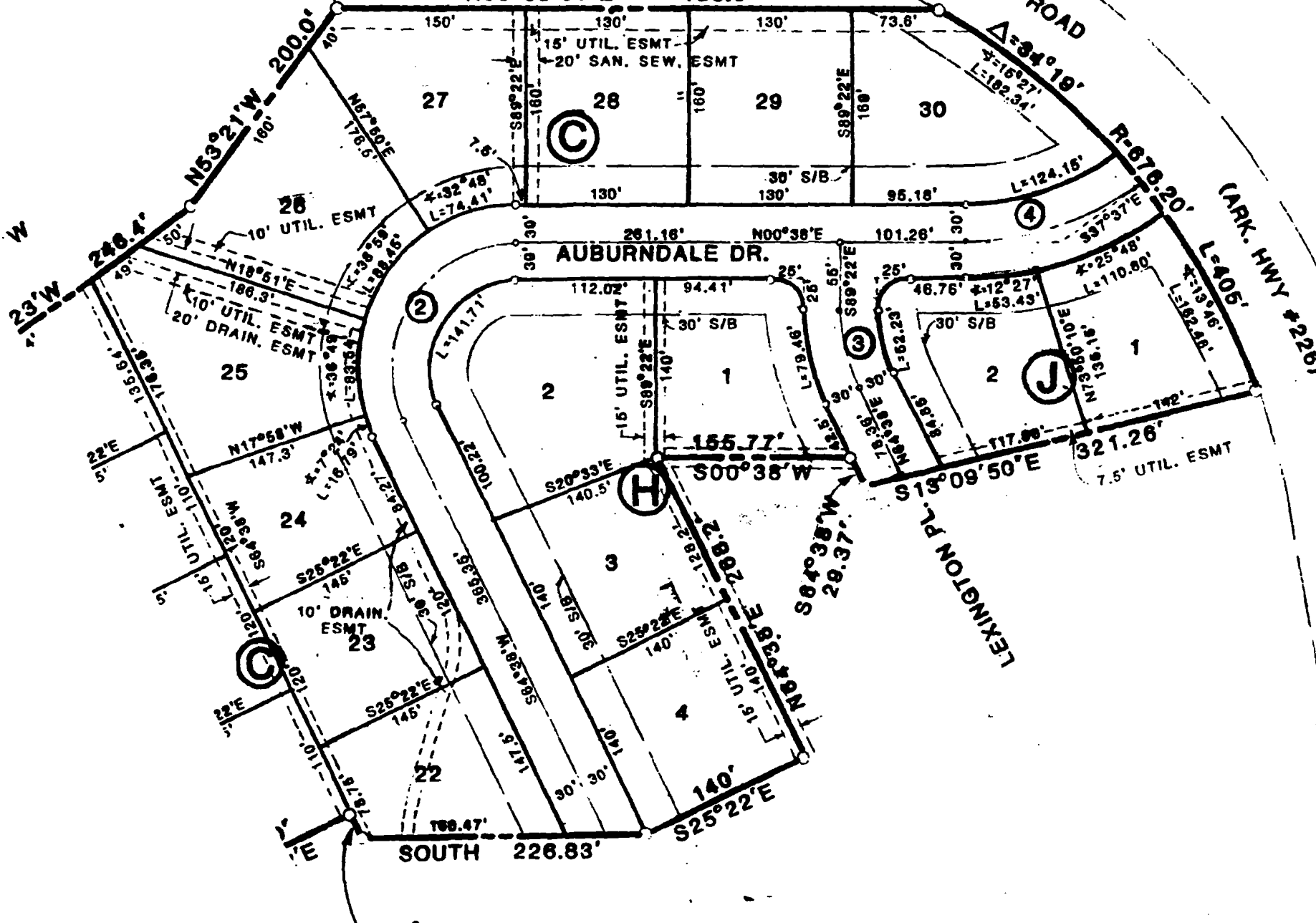
N00°38'36"E 483.6'

ROAD

$\Delta=34^{\circ}19'$   
 $\angle=16^{\circ}21'$   
 $L=182.34'$

R-678.20'

(ARK. HWY #226)  
L=405'  
 $\angle=13^{\circ}45'$   
L=182.48'



S64°38'W  
19.45'

SOUTH 226.83'

140°  
S25°22'E

S15°09'50"E  
321.26'

S00°38'W  
155.77'

S20°33'E  
140.5'

S26°22'E  
145'

N17°58'W  
147.3'

22'E  
5'

23'W  
49'

240.4'

N63°21'W  
200.0'

N18°51'E  
186.3'

AUBURDALE DR.

N00°38'E  
101.26'

261.16'

38'30"

30'30"

112.02'

94.41'

46.76'

30' S/B

15' UTIL. ESMT

30' S/B

30' S/B

30' S/B

30' S/B

30' S/B

30' S/B

30' S/B

30' S/B

30' S/B

30' S/B

30' S/B

30' S/B

30' S/B

30' S/B

30' S/B

30' S/B

30' S/B

30' S/B

30' S/B

30' S/B

30' S/B

30' S/B

30' S/B

30' S/B

30' S/B

30' S/B

30' S/B

30' S/B

30' S/B

30' S/B

30' S/B

30' S/B

30' S/B

30' S/B

30' S/B

30' S/B

30' S/B

30' S/B

30' S/B

30' S/B

30' S/B

30' S/B

30' S/B

30' S/B

30' S/B

30' S/B

30' S/B

30' S/B

30' S/B

30' S/B

30' S/B

30' S/B

30' S/B

30' S/B

30' S/B

30' S/B

30' S/B

30' S/B

30' S/B

30' S/B

30' S/B

30' S/B

30' S/B

30' S/B

30' S/B

30' S/B

30' S/B

30' S/B

30' S/B

30' S/B

30' S/B

30' S/B

30' S/B

30' S/B

30' S/B

30' S/B

30' S/B

30' S/B

30' S/B

30' S/B

30' S/B

30' S/B

30' S/B

30' S/B

30' S/B

30' S/B

30' S/B

30' S/B

30' S/B

30' S/B

30' S/B

30' S/B

30' S/B

30' S/B

30' S/B

30' S/B

30' S/B

30' S/B

30' S/B

30' S/B

30' S/B

30' S/B

30' S/B

30' S/B

30' S/B

30' S/B

30' S/B

30' S/B

30' S/B

30' S/B

30' S/B

30' S/B

30' S/B

30' S/B

30' S/B

30' S/B

30' S/B

30' S/B

30' S/B

30' S/B

30' S/B

30' S/B

30' S/B

30' S/B

30' S/B

30' S/B

30' S/B

30' S/B

30' S/B

30' S/B

30' S/B

30' S/B

30' S/B

30' S/B

30' S/B

30' S/B

30' S/B

30' S/B

30' S/B

30' S/B

30' S/B

30' S/B

30' S/B

30' S/B

30' S/B

30' S/B

30' S/B

30' S/B

30' S/B

30' S/B

30' S/B

30' S/B

30' S/B

30' S/B

30' S/B

30' S/B

30' S/B

30' S/B

30' S/B

30' S/B

30' S/B

30' S/B

30' S/B

30' S/B

30' S/B

30' S/B

30' S/B

30' S/B

30' S/B

30' S/B

30' S/B

30' S/B

30' S/B

30' S/B

30' S/B

30' S/B

30' S/B

30' S/B

30' S/B

30' S/B

30' S/B

30' S/B

30' S/B

30' S/B

30' S/B

30' S/B

30' S/B

30' S/B

30' S/B

30' S/B

30' S/B

30' S/B

30' S/B

30' S/B

30' S/B

30' S/B

30' S/B

30' S/B

30' S/B

30' S/B

30' S/B

30' S/B

30' S/B

30' S/B

30' S/B

30' S/B

30' S/B

30' S/B

30' S/B

30' S/B

30' S/B

30' S/B

30' S/B

30' S/B

30' S/B

30' S/B

30' S/B

30' S/B

30' S/B

30' S/B

30' S/B

30' S/B

30' S/B

30' S/B

30' S/B

30' S/B

30' S/B

30' S/B

30' S/B

30' S/B

30' S/B

30' S/B

30' S/B

30' S/B

30' S/B

30' S/B

30' S/B

30' S/B

30' S/B

30' S/B

30' S/B

30' S/B

30' S/B

30' S/B

30' S/B

30' S/B

30' S/B

30' S/B

30' S/B

30' S/B

30' S/B

30' S/B

30' S/B

30' S/B

30' S/B

30' S/B

30' S/B

30' S/B

30' S/B

30'