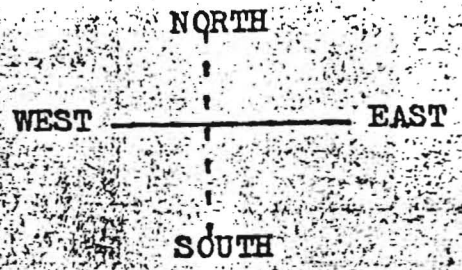


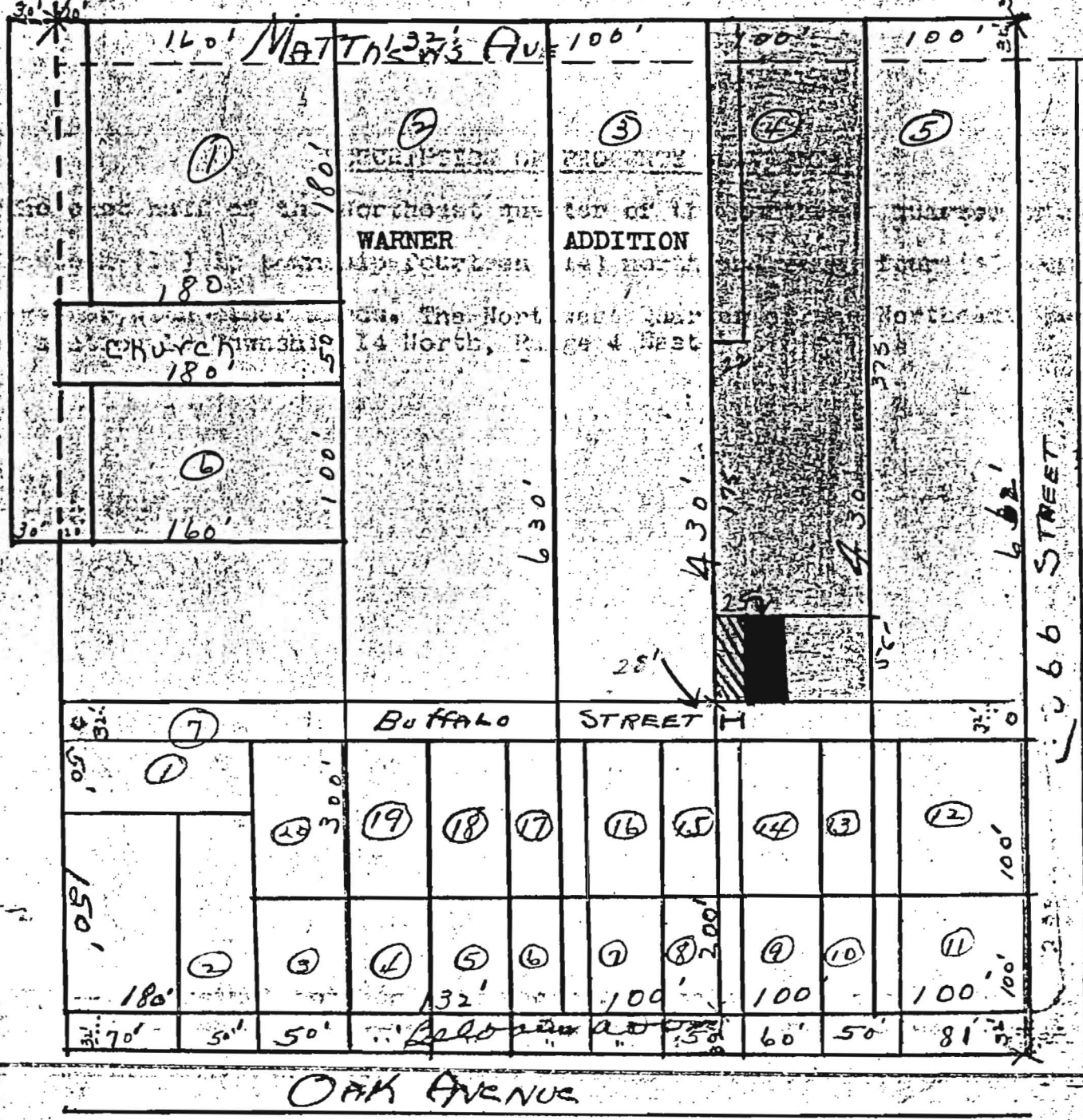
PLAT OF WARNER'S ADDITION TO  
THE CITY OF JONESBORO, ARKANSAS

(For dedication deed, see page 12)



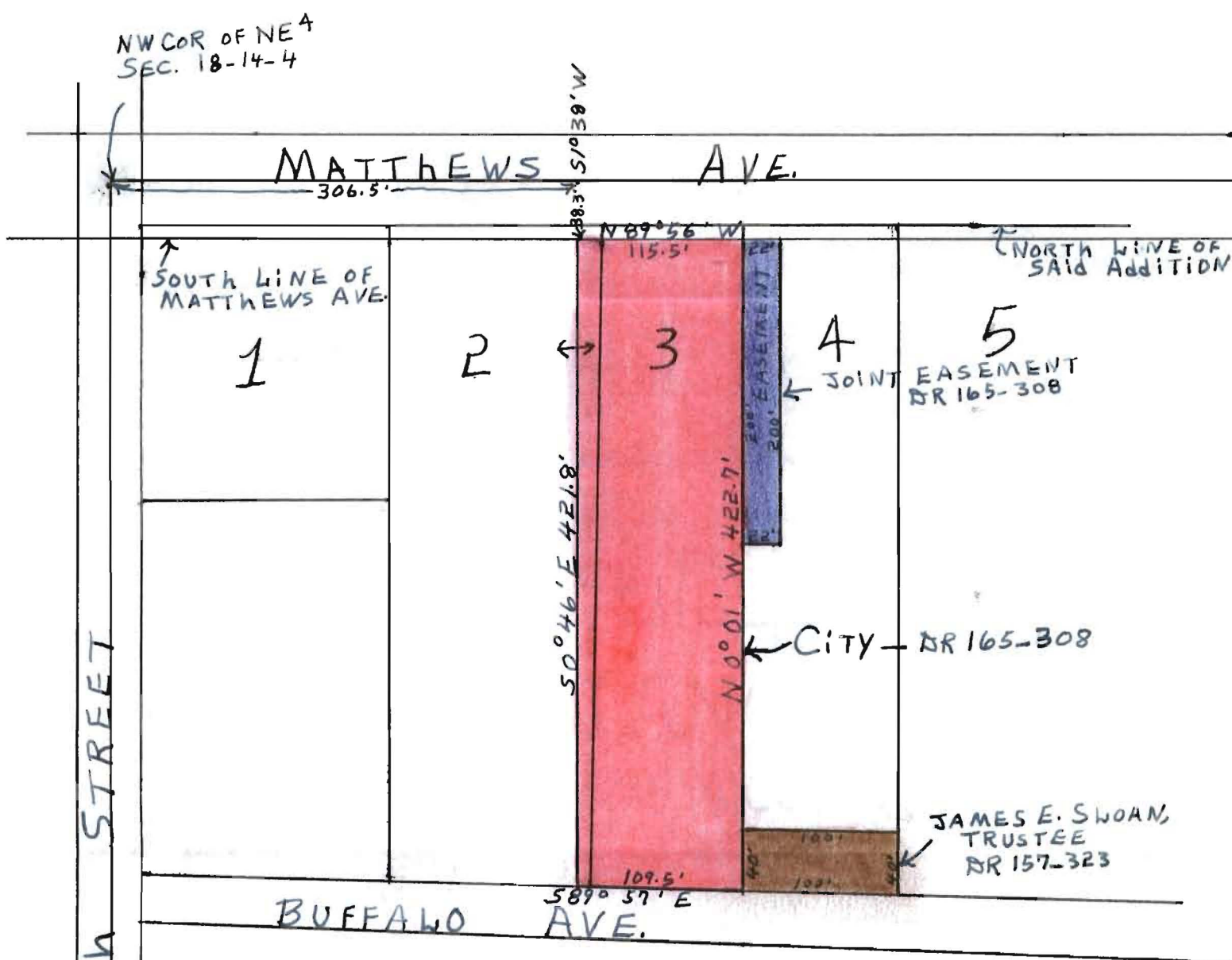
North West COYNEY  
North East QUAYTER  
19-4N-24E

192.6



432  
37 1/2  
5

also affects



PLAT OF  
 A PART OF WARNER'S ADDITION TO THE CITY OF JONESBORO, ARKANSAS.