

TRACT A :

PART OF THE NW 1/4 AND PART OF THE E 1/4 SECTION 35, T15N-R4E, CRAIGHEAD COUNTY, ARKANSAS, MORE PARTICULARLY DESCRIBED AS FOLLOWS; COMMENCE AT THE NW CORNER OF SAID SECTION 35; THENCE N 89°54'08" E 1312.25 FEET; THENCE S 00°04'54" W 35.88 FEET; THENCE S 88°57'01" E 239.16 FEET; THENCE S 76°05'01" E 219.40 FEET; THENCE S 04°53'14" W 41.64 FEET; THENCE ON A CURVE TO THE LEFT ARC LENGTH 41.41 FEET, RADIUS 25.00 FEET, CHORD BEARING S 57°27'45" W 36.84 FEET; THENCE S 10°01'03" W 140.49 FEET; THENCE ON A CURVE TO THE RIGHT ARC LENGTH 214.49 FEET; RADIUS 780.00 FEET, CHORD BEARING S 17°27'17" W 213.81 FEET; THENCE ON A CURVE TO THE LEFT ARC LENGTH 274.45 FEET; RADIUS 352.00 FEET, CHORD BEARING S 03°25'46" W 267.55 FEET TO THE POINT OF BEGINNING; THENCE S 57°54'38" E 139.21 FEET; THENCE S 47°28'18" E 593.38 FEET; THENCE S 42°32'08" W 150.00 FEET; THENCE S 47°28'18" E 294.46 FEET; THENCE ON A CURVE TO THE RIGHT ARC LENGTH 29.09 FEET, RADIUS 250.00, CHORD BEARING OF S 44°08'09" E 29.09 FEET; THENCE S 51°38'42" W 30.03 FEET; THENCE S 86°15'41" W 128.68 FEET; THENCE S 00°12'34" E 56.67 FEET; THENCE N 89°49'38" E 24.63 FEET; THENCE S 14°47'04" E 325.48 FEET; THENCE N 74°51'45" W 57.25 FEET; THENCE S 89°46'34" W 175.69 FEET TO THE POINT OF BEGINNING, THENCE N 00°13'52" W 101.50 FEET; THENCE ON A CURVE TO THE RIGHT ARC LENGTH 24.85 FEET, RADIUS 50.00 FEET, CHORD BEARING OF N 61°37'44" W 24.59 FEET; THENCE ON A CURVE TO THE LEFT ARC LENGTH 18.70 FEET, RADIUS 25.00 FEET, CHORD BEARING OF N 68°49'27" W 18.27 FEET; THENCE S 89°44'40" W 154.80 FEET; THENCE S 00°13'44" E 119.79 FEET; THENCE N 89°46'34" E 193.40 FEET TO THE POINT OF BEGINNING, CONTAINING 0.52 ACRES, MORE OR LESS.

TRACT B :

PART OF THE NW 1/4 AND PART OF THE E 1/4 SECTION 35, T15N-R4E, CRAIGHEAD COUNTY, ARKANSAS, MORE PARTICULARLY DESCRIBED AS FOLLOWS; COMMENCE AT THE NW CORNER OF SAID SECTION 35; THENCE N 89°54'08" E 1312.25 FEET; THENCE S 00°04'54" W 35.88 FEET; THENCE S 88°57'01" E 239.16 FEET; THENCE S 76°05'01" E 219.40 FEET; THENCE S 04°53'14" W 41.64 FEET; THENCE ON A CURVE TO THE LEFT ARC LENGTH 41.41 FEET, RADIUS 25.00 FEET, CHORD BEARING S 57°27'45" W 36.84 FEET; THENCE S 10°01'03" W 140.49 FEET; THENCE ON A CURVE TO THE RIGHT ARC LENGTH 214.49 FEET; RADIUS 780.00 FEET, CHORD BEARING S 17°27'17" W 213.81 FEET; THENCE ON A CURVE TO THE LEFT ARC LENGTH 274.45 FEET; RADIUS 352.00 FEET, CHORD BEARING S 03°25'46" W 267.55 FEET TO THE POINT OF BEGINNING; THENCE S 57°54'38" E 139.21 FEET; THENCE S 47°28'18" E 593.38 FEET; THENCE S 42°32'08" W 150.00 FEET; THENCE S 47°28'18" E 294.46 FEET; THENCE ON A CURVE TO THE RIGHT ARC LENGTH 29.09 FEET, RADIUS 250.00, CHORD BEARING OF S 44°08'09" E 29.09 FEET; THENCE S 51°38'42" W 30.03 FEET; THENCE S 86°15'41" W 128.68 FEET; THENCE S 00°12'34" E 56.67 FEET; THENCE N 89°49'38" E 24.63 FEET; THENCE S 14°47'26" E 325.47 FEET; THENCE N 74°51'45" W 57.25 FEET; THENCE S 89°46'34" W 114.71 FEET TO THE POINT OF BEGINNING, THENCE CONTINUE S 89°46'34" W 339.99 FEET; THENCE S 00°31'33" W 30.22 FEET; THENCE S 88°31'16" E 44.00 FEET; THENCE S 61°14'43" E 36.65 FEET TO A POINT 1.0 FOOT NORTH OF AN EXISTING CART PATH THENCE IN AN EASTERLY DIRECTION AND 1.0 FOOT NORTH OF SAID CART PATH APPROX. 288.00 FEET TO A POINT; THENCE N 00°07'25" E 33.29 FEET TO THE POINT OF BEGINNING, CONTAINING 0.37 ACRES, MORE OR LESS.

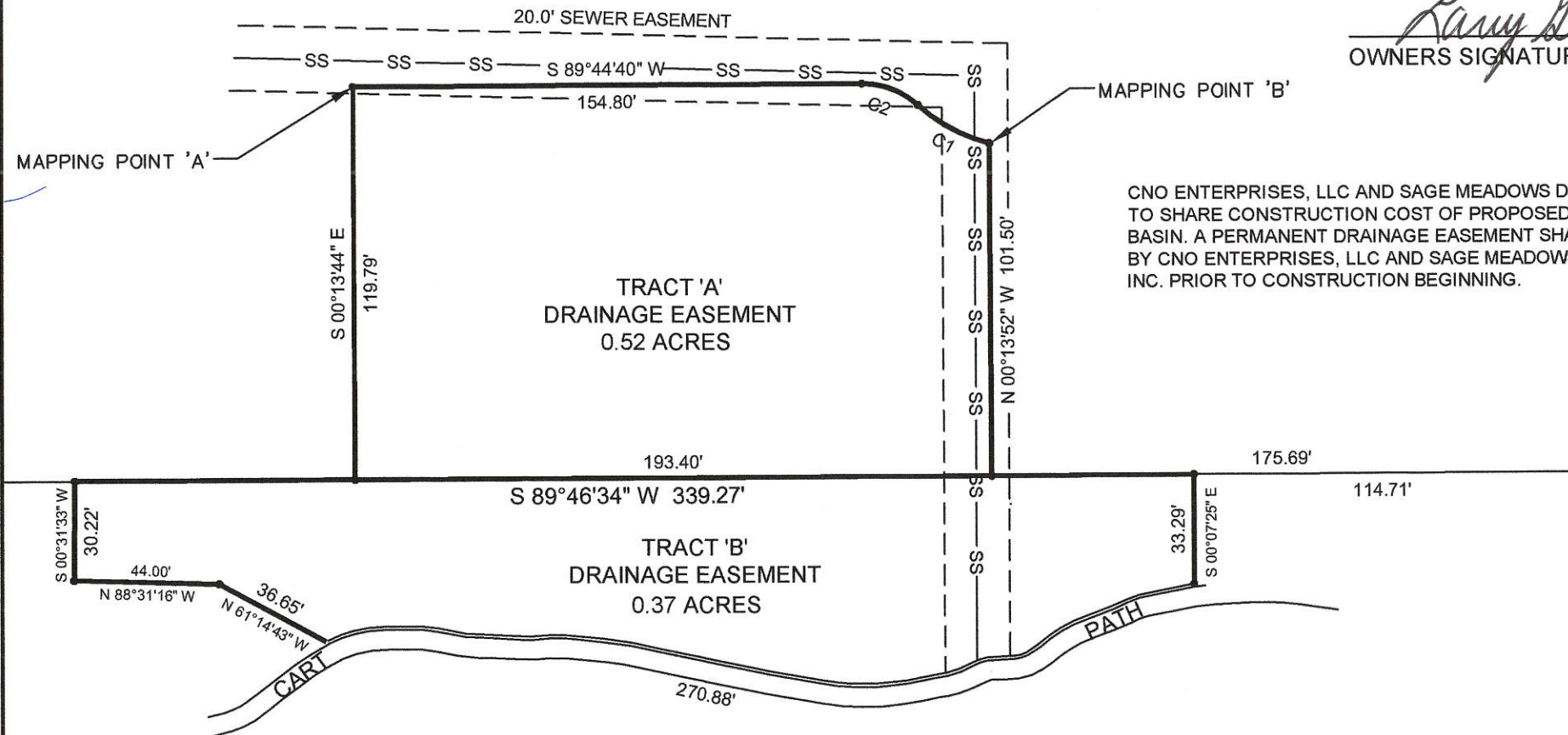
SURVEY CONTROL REFERENCE MARKS:
 • JONESBORO GPS MONUMENT # 24
 • JONESBORO GPS MONUMENT # 23
 HORIZONTAL CONTROL IS NAD 83

MAPPING POINT 'A': NORTHING: 568,720.8 EASTING: 1,717,133.9
MAPPING POINT 'B': NORTHING: 568,703.1 EASTING: 1,717,327.4

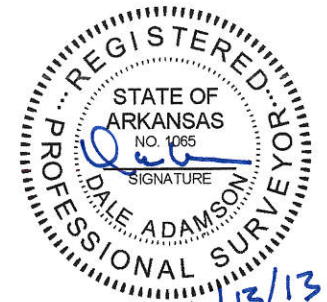
OWNERS CERTIFICATE

WE HEREBY CERTIFY THAT WE ARE THE OWNERS OF THE PROPERTY SHOWN AND DESCRIBED HEREON AND THAT WE HEREBY DEDICATE PERPETUAL USE OF ALL STREETS AND EASEMENTS AS SHOWN.

[Signature] 6-12-13
 OWNERS SIGNATURE DATE
[Signature] 6-14-13
 OWNERS SIGNATURE DATE



CNO ENTERPRISES, LLC AND SAGE MEADOWS DEVELOPMENT, INC. TO SHARE CONSTRUCTION COST OF PROPOSED DETENTION BASIN. A PERMANENT DRAINAGE EASEMENT SHALL BE PROVIDED BY CNO ENTERPRISES, LLC AND SAGE MEADOWS DEVELOPMENT, INC. PRIOR TO CONSTRUCTION BEGINNING.



CURVE TABLE

CURVE	RADIUS	ARC LENGTH	CHORD LENGTH
C1	50.00'	24.85'	24.59'
C2	25.00'	18.70'	18.27'

**MINOR PLAT
OF
FAIRWAY # 14 DRAINAGE EASEMENT**

SAGE MEADOWS PROPERTY OWNERS ASSOC:
4406 CLUBHOUSE DRIVE 72401

ADAMSON SURVEYING, 1504 BRANCHWOOD LANE,
JONESBORO ARKANSAS, 72404 PH: 932-5900

PLAN SCALE:
1" = 50.00'

REVISION

DATE: 06/11/2013 SHEET 1 OF 1