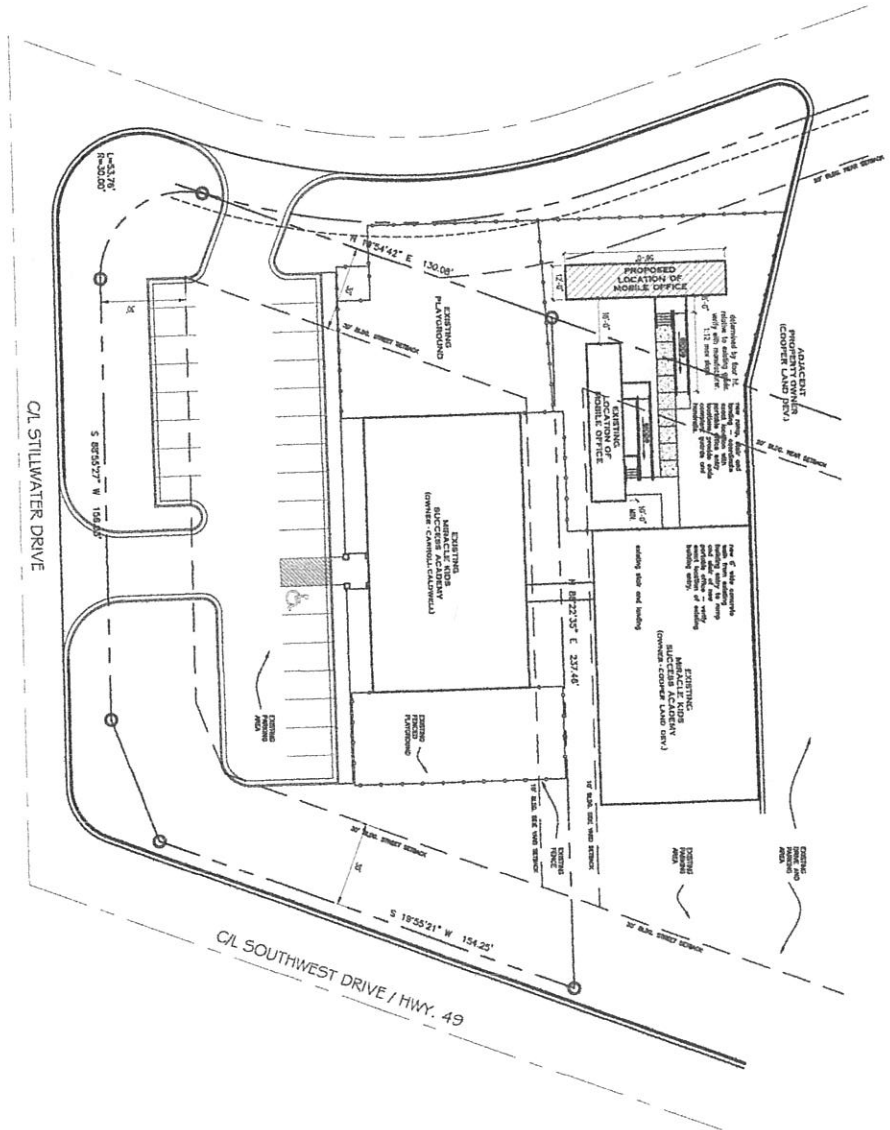
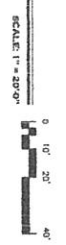




N  
SITE LAYOUT



1 OF 1  
SHEET NO.

DATE: 05/21/17  
DRAWN BY: JMS  
CHECKED BY: JMS  
SCALE: 1" = 20' 0"

MOBILE OFFICE  
**MIRACLE KIDS SUCCESS ACADEMY**  
1900 STILLWATER DRIVE · JONESBORO, ARKANSAS

**MATT SILAS ARCHITECT**  
302 West Washington Ave. · Jonesboro, Arkansas 72403  
Tel: (870) 268-0300 Fax: (870) 268-0301

PROJECT NO.	17-011
DATE:	05/21/17
DRAWN BY:	JMS
CHECKED BY:	JMS
SCALE:	1" = 20' 0"

