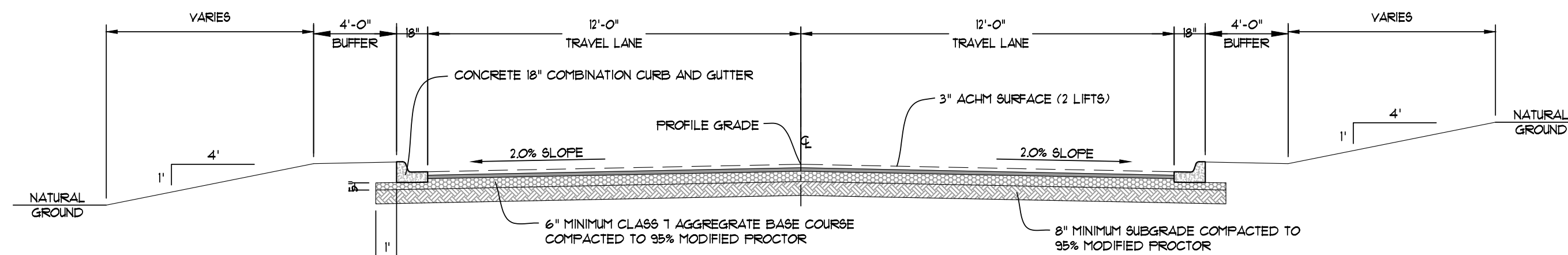


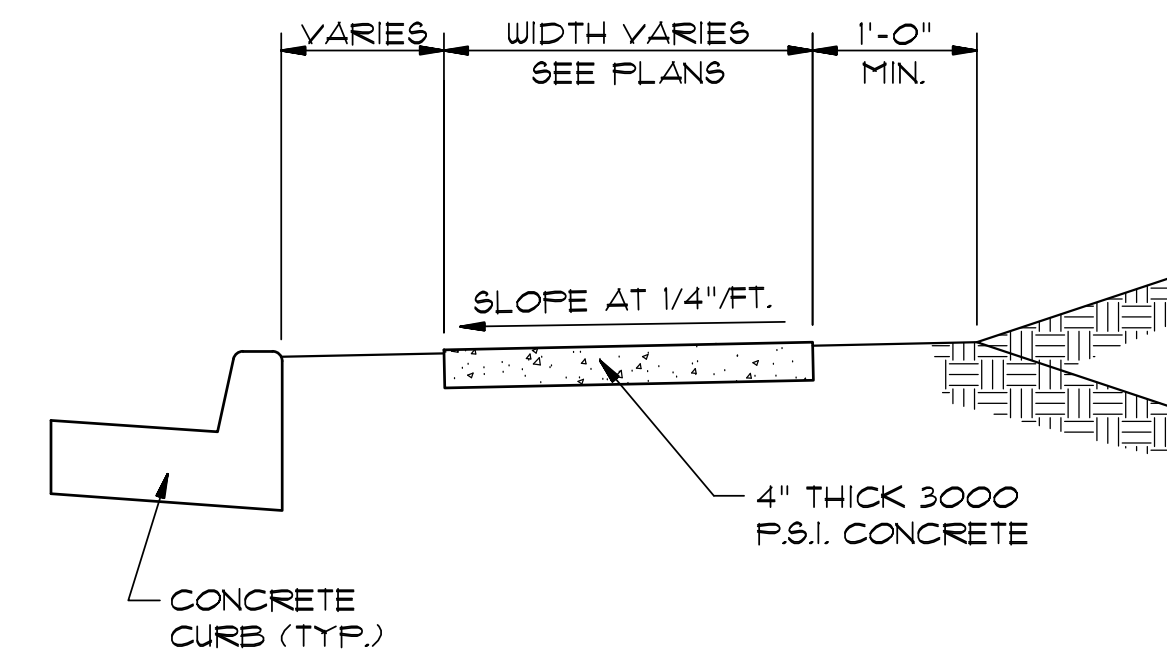
**LOCAL STREET SECTION (10' RW)
CANERA STREET**

SCALE: NONE



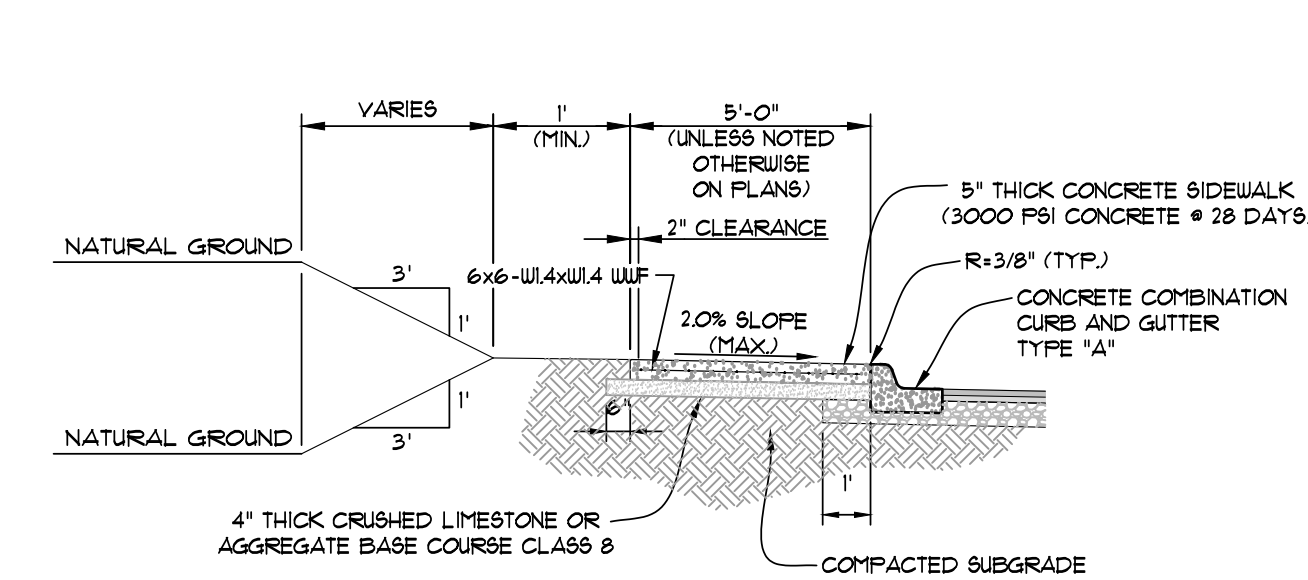
**LOCAL STREET SECTION (60' RW)
CHANCERY STREET**

SCALE: NONE

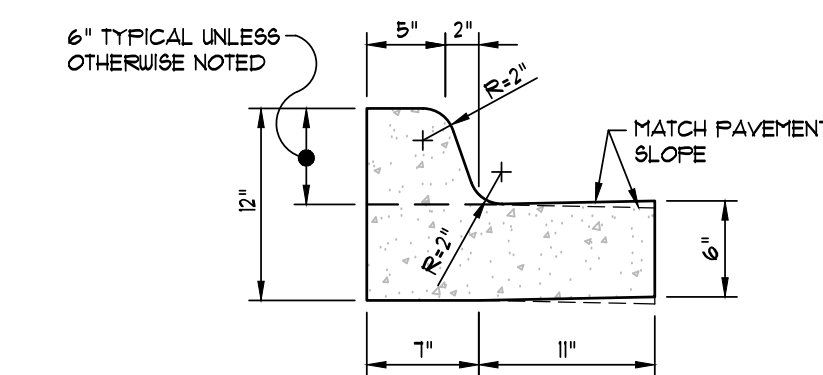


TYPICAL SECTION - SIDEWALK
N.T.S.

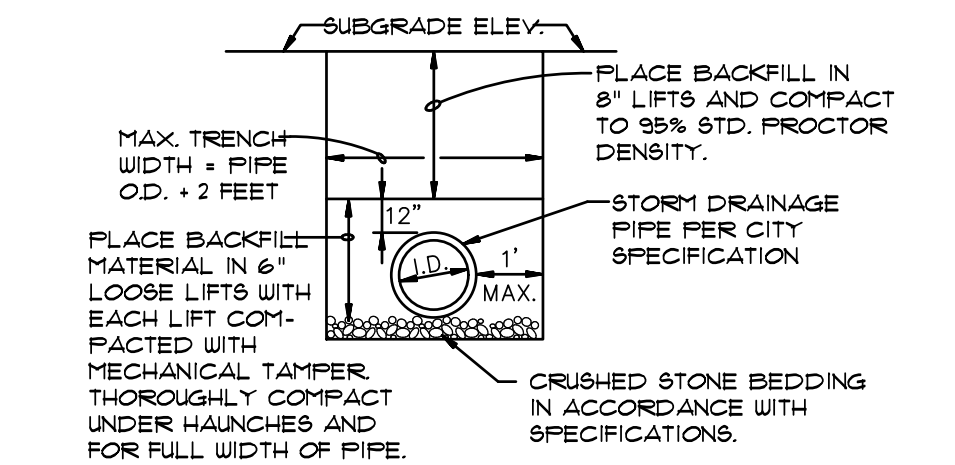
* MINIMUM WIDTH FOR SIDEWALK ADJACENT TO CURB IS 5' FOR CITY STREETS AND 6' FOR STATE OR U.S. HIGHWAYS.



TYPICAL SECTION - SIDEWALK AT CURB
(NOT TO SCALE)

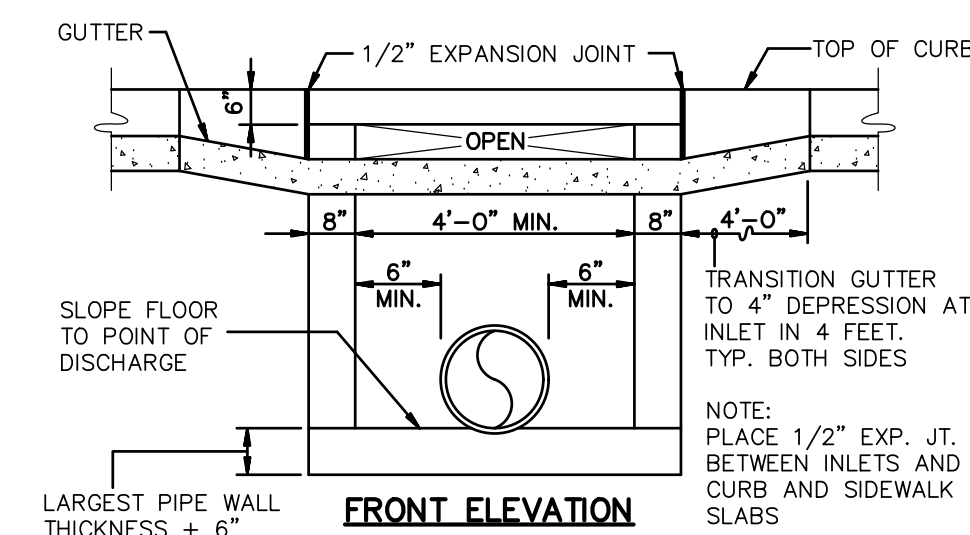
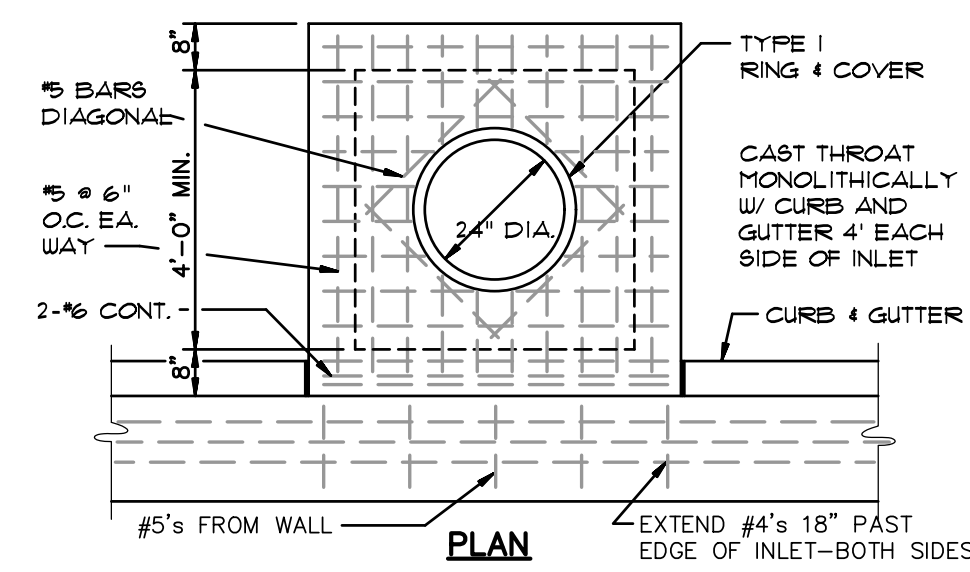


**TYPICAL CURB & GUTTER
TYPE "A-18"**
(NOT TO SCALE)

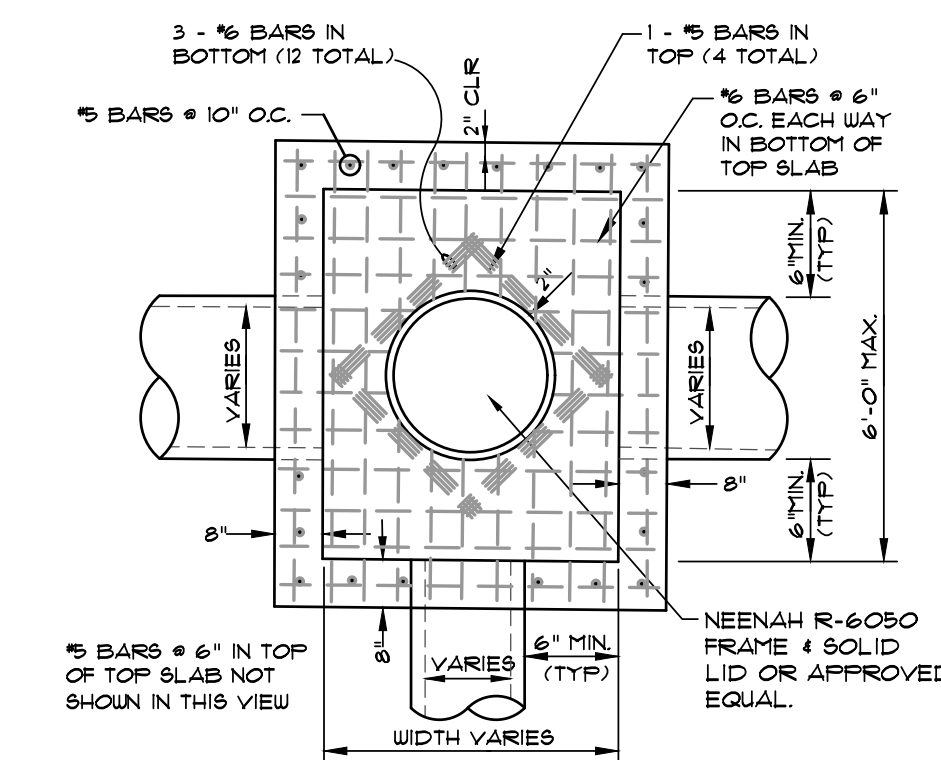


**DRAINAGE PIPE
TRENCH DETAIL**

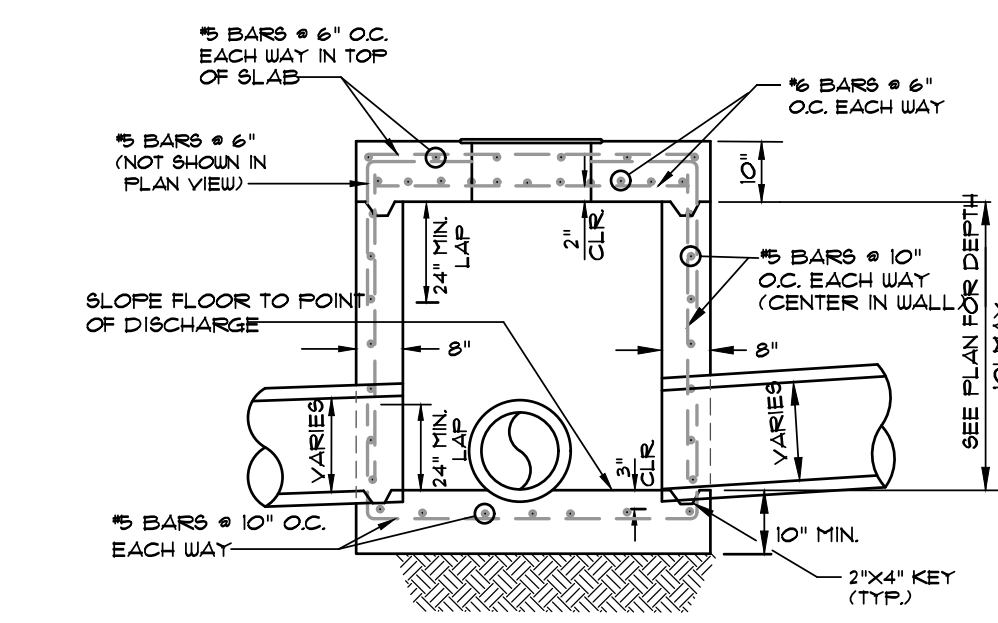
NOTE: TO BE USED WITH NEW STREET CONSTRUCTION. SEE DRAWING NO. PT-1 FOR EXISTING STREET CUTS.



CURB INLET - TYPE "A"
(NOT TO SCALE)



PLAN - JUNCTION BOX - HEAVY
N.T.S.



SECTION - JUNCTION BOX - HEAVY
N.T.S.

- NOTES:
- SHOULD BE USED TO ACCOMMODATE VEHICULAR TRAFFIC.
 - JUNCTION BOXES MORE THAN 3 FEET DEEP SHALL HAVE STANDARD MANHOLE STEPS PLACED @ 15" O.C.
 - SEE REINFORCING DETAIL FOR OPENING IN WALL OR SLAB.

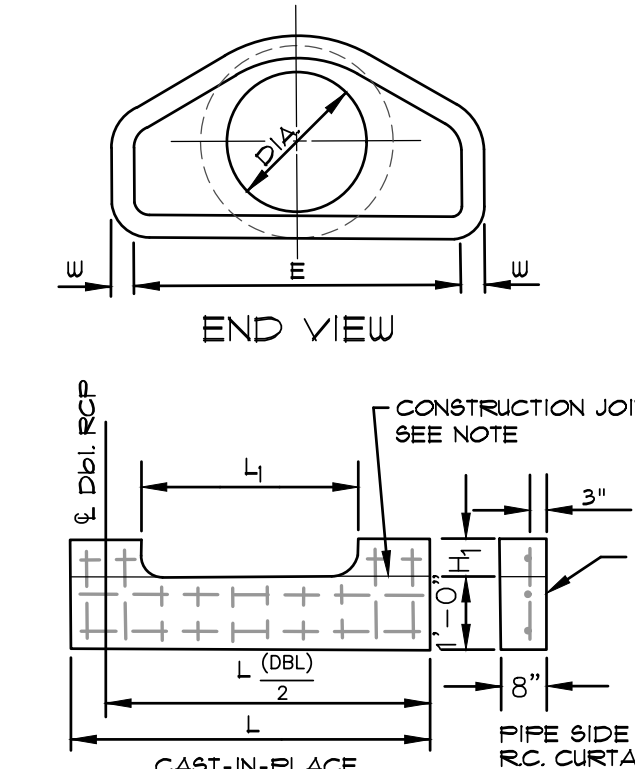
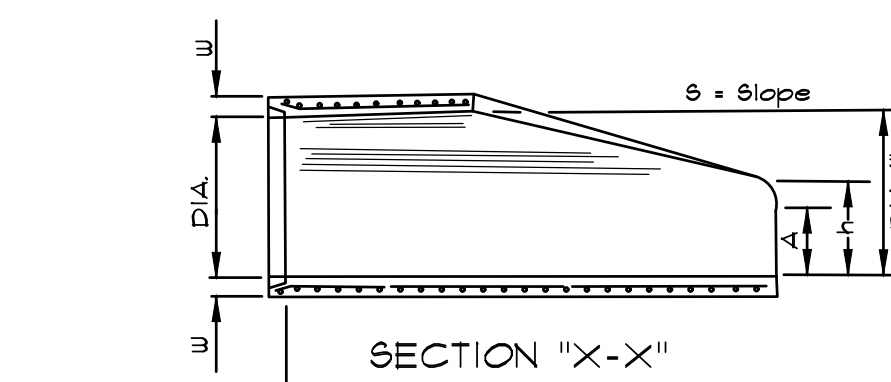
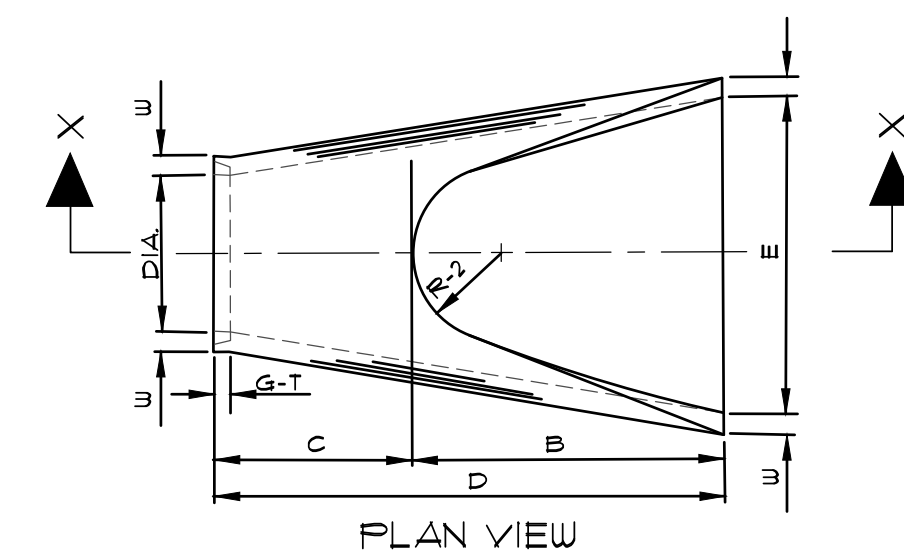


TABLE OF DIMENSIONS

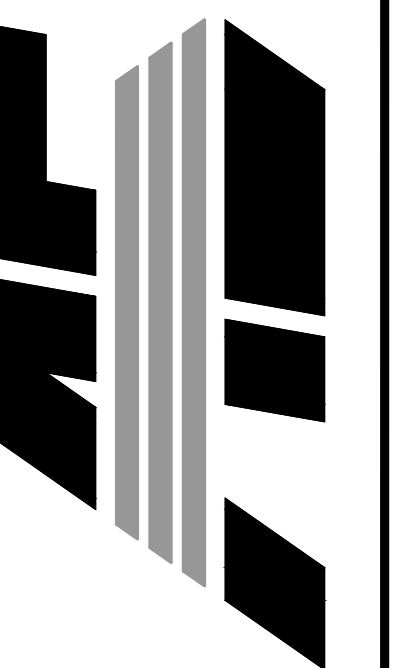
| DIA. | WALL | A | B | C | D | E | F | G | H | I | J | K | L | M | N | O | P | Q-1 | Q-2 | G-1 | WT | h |
|------|--------|--------|-----------|------------|-----------|-------|-----|-----|-----------|-----------|-----|--------|-------|------------|---|---|---|-----|-----|-----|----|---|
| 18" | 2 1/2" | 8" | 2'-3" | 3'-10" | 6'-1" | 3'-0" | 3:1 | 19" | 28" | 15 1/2" | 12" | 2" | 1000 | 1'-0 1/2" | | | | | | | | |
| 24" | 3" | 9 1/2" | 3'-7 1/2" | 4'-6" | 6'-1 1/2" | 4'-0" | 3:1 | 25" | 33 3/16" | 16 13/16" | 14" | 2 1/2" | 1600 | 1'-1 1/2" | | | | | | | | |
| 30" | 3 1/2" | 1'-0" | 4'-6" | 1'-7 3/4" | 6'-1 3/4" | 5'-0" | 3:1 | 31" | 37" | 18 1/2" | 15" | 3 1/4" | 1940 | 1'-4 5/8" | | | | | | | | |
| 36" | 4" | 1'-3" | 5'-3" | 2'-10 3/4" | 8'-1 3/4" | 6'-0" | 3:1 | 37" | 47 13/16" | 24 5/16" | 20" | 3 1/2" | 4100 | 1'-8" | | | | | | | | |
| 42" | 4 1/2" | 1'-9" | 5'-3" | 2'-11" | 8'-2" | 6'-4" | 3:1 | 43" | 53 7/8" | 27 1/2" | 22" | 3 1/2" | 5360 | 2'-2 1/2" | | | | | | | | |
| 48" | 5" | 2'-0" | 6'-0" | 2'-2" | 8'-2" | 7'-0" | 3:1 | 49" | 56 1/2" | 28 1/2" | 22" | 3 1/2" | 6550 | 2'-6" | | | | | | | | |
| 54" | 5 1/2" | 2'-4" | 6'-6" | 1'-10" | 8'-4" | 7'-6" | 3:1 | 55" | 65 1/2" | 33 1/8" | 24" | 4" | 8750 | 2'-10 1/2" | | | | | | | | |
| 60" | 6" | 2'-10" | 6'-6" | 1'-10" | 8'-4" | 8'-0" | 3:1 | 61" | 72 1/2" | 36 11/16" | 24" | 4" | 9270 | 3'-5" | | | | | | | | |
| 72" | 7" | 3'-10" | 6'-6" | 1'-10" | 8'-4" | 9'-0" | 3:1 | 73" | 77 13/16" | 38 15/16" | 24" | 5" | 13260 | 4'-8" | | | | | | | | |

- NOTES:
- THE PORTION OF THE R.C. CURTAIN WALL BENEATH THE FLARED END SECTION (LOWER 1'-0") SHALL BE PLACED MONOLITHICALLY. THE FLARED END SECTION SHALL THEN BE SET IN PLACE AND THE REMAINING PORTIONS OF THE R.C. CURTAIN WALL PLACED.
 - ALL REINFORCING STEEL ARE #4 BARS @ 6" O.C.
 - NO SEPARATE PAYMENT WILL BE MADE FOR THE CURTAIN WALLS. THEY SHALL BE CONSIDERED SUBSIDIARY TO THE FLARED END SECTIONS.
 - TONGUE END ON UPSTREAM SECTION. GROOVE END ON DOWNSTREAM SECTION.

**FLARED END SECTION DETAILS FOR
REINFORCED CONCRETE PIPE CULVERT**
(NOT TO SCALE)

GREENSBOROUGH VILLAGE
RESIDENTIAL - PHASE I
CANERA DRIVE
JONESBORO, ARKANSAS

**ASSOCIATED
ENGINEERING, LLC**
CIVIL ENGINEERING • LAND SURVEYING
LAND PLANNING
103 SOUTH CHURCH STREET • P.O. BOX 1462
JONESBORO, AR 72403
PH: 870-932-3594 • FAX: 870-935-1263



| NO. | DESCRIPTION | DATE |
|-----|-------------|------|
| | | |
| | | |
| | | |
| | | |
| | | |
| | | |
| | | |
| | | |
| | | |

**STANDARD
DETAILS**

DATE: 07/29/2022 DRAWN: CCH
CADD FILE: 22120-SOP-RP1 CHECKED: JME
DWG#: 0414091.XXXX SHEET
SCALE: AS SHOWN C012