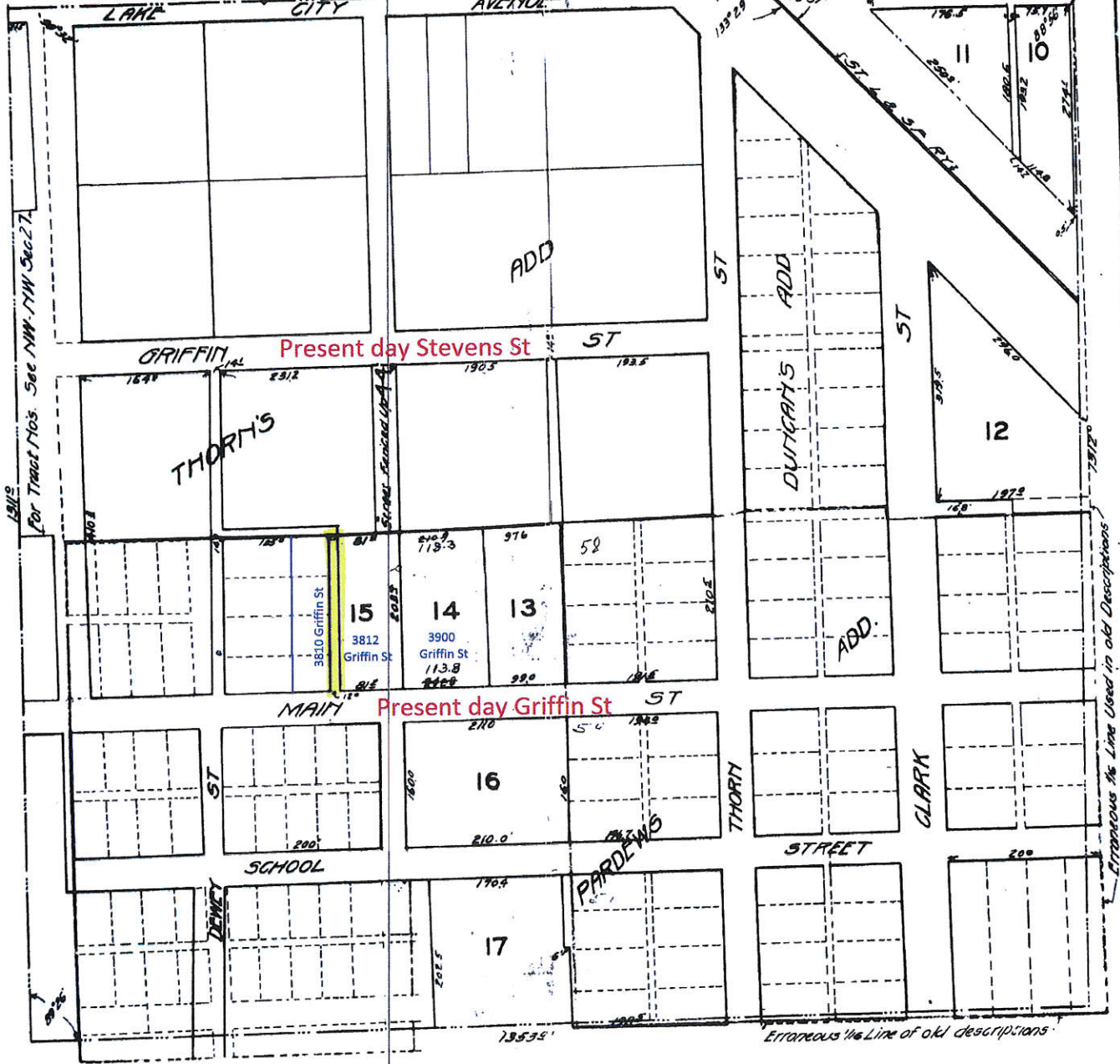


1106

Present day E Highland Drive / Hwy 18 E

1962 Z



Present day Stevens St

Present day Griffin St

NE 1/4 NW 1/4 SEC. 27, TWP. 14 N., R. 4 E.

SCALE 1"=100'

Surveyed and Platted September 1926 by Order Craighead County Court Entered

CASS & LEE ENGINEERS
JONESBORO, ARK