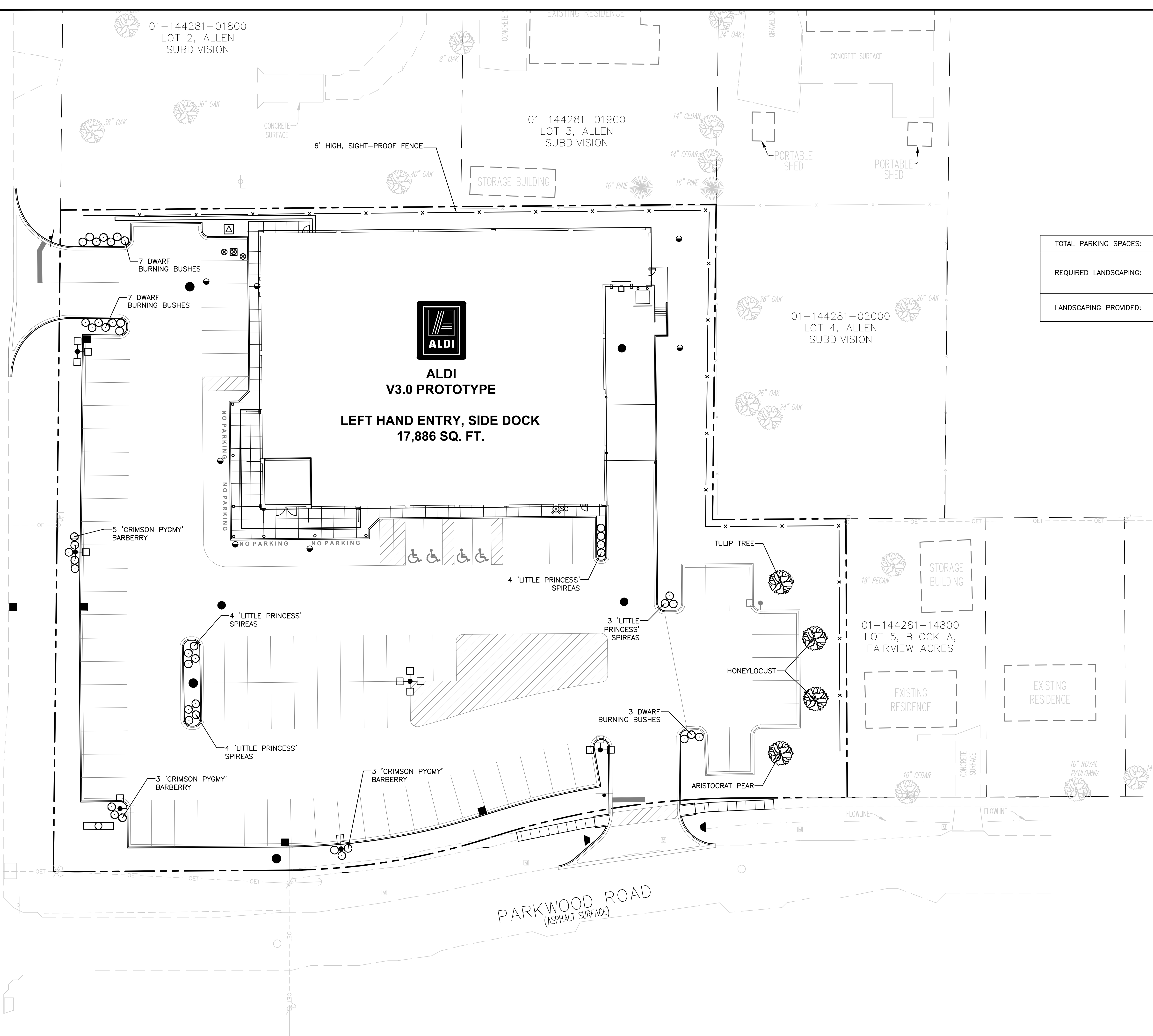


U.S. HIGHWAY NO. 49
STADIUM BOULEVARD
(ASPHALT SURFACE)



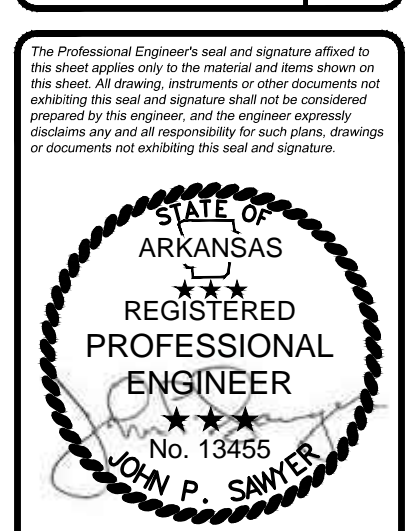
TOTAL PARKING SPACES:	89 SPACES
REQUIRED LANDSCAPING:	1 TREE OR 3 SHRUBS PER 10 PARKING SPACES
LANDSCAPING PROVIDED:	4 TREES, 45 SHRUBS

ISSUE	REMARKS	DATE

Aldi, Inc.
475 Pearl Drive
O'Fallon, Missouri 63376
Ph: (636) 278-4700

SAWYER ENGINEERING, INC.
10 Auburn Court
Highland, Illinois 62249
Ph (314) 800-5914
Fax (618) 882-6113
www.SawyerEngr.com

**ALDI
JONESBORO, AR**
[site address], Jonesboro, Arkansas 72401



Date: 8/05/2011
John P. Sawyer, PE
License No. 13455
Civil Engineer

Job Number: 2010-100
Date: 8/05/2011
Designed: CMB Sheet
Drawn: CMB **CP600**
Checked: JPS

Drawing name: C:\Sawyer\Engr\Aldi\Jonesboro_AR\Drawings\Jonesboro-Pro\LAN.dwg Plotted on: Aug 05, 2011 - 1:22pm Plotted by: Chrisbap