



**JONESBORO METROPOLITAN
PLANNING ORGANIZATION**

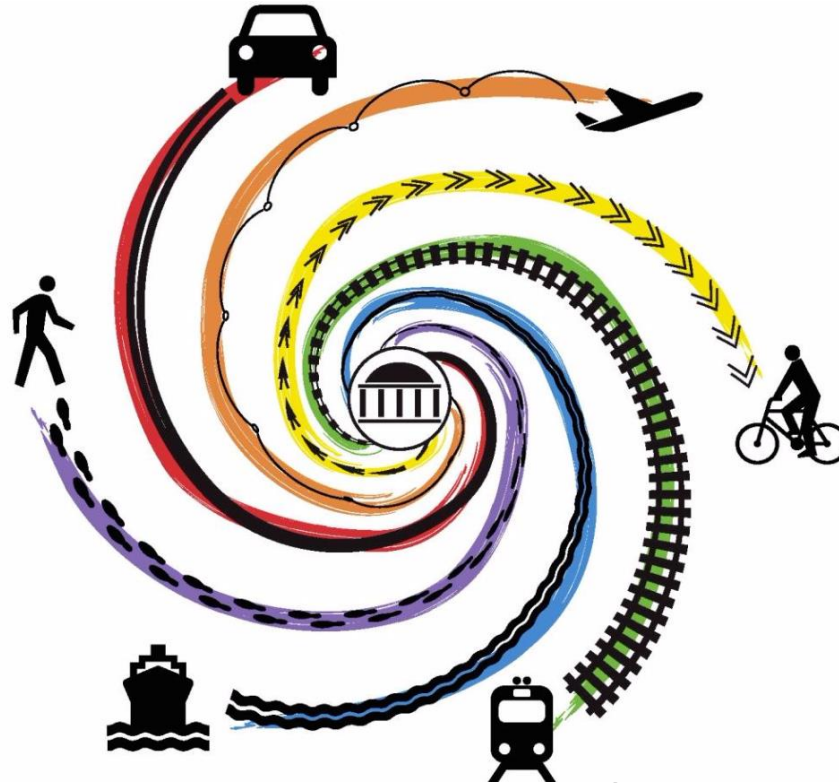


MPO Active Transportation Plan

Presented by
Erica Tait

What is an MPO?

□ MPO stands for Metropolitan Planning Organization

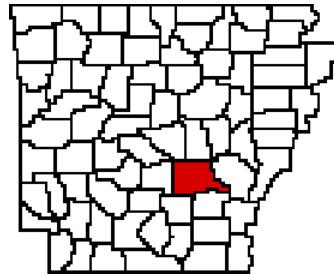


MPO Structure

- ❑ An MPO is required to have a decision making “policy body”
- ❑ Most are composed of:
 - A Policy or Executive Committee
 - Technical Advisory Committee
 - A Director and Staff



MPOs in Arkansas



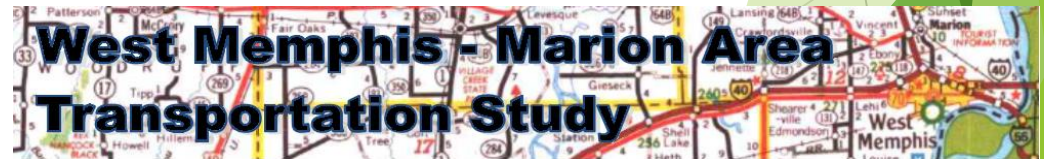
Southeast Arkansas Regional Planning Commission



METROPLAN
SMART PLANNING MAKES SMART PLACES.

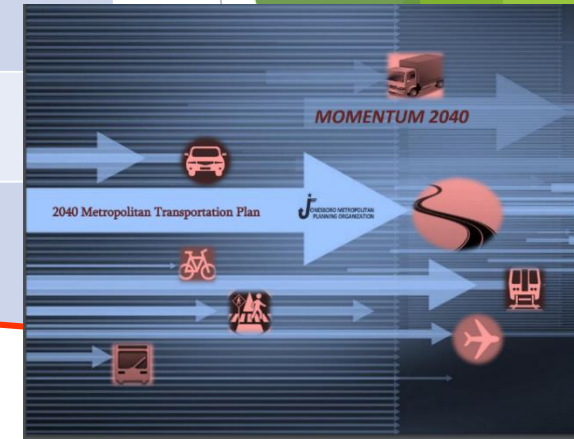


Metropolitan Planning Organization



The Work and Purpose of an MPO

Name	Period	Updated
Unified Planning Work Program (UPWP)	1 year	Annually
Transportation Improvement Plan (TIP)	4 years	3 Years
Annual List of Obligated Projects (ALOP)	1 year	Annually
Metropolitan Transportation Plan (MTP)	25 years	5 Years
Public Participation Plan (PPP)	Ongoing	As Needed



Consistent Themes from MTP development



- ▶ Connectivity/ Accessibility
- ▶ Traffic Congestion
- ▶ Adding & Maintaining Sidewalks

Active Transportation Plan



Active Transportation Plan

- ▶ “Active transportation is any self-propelled, human-powered mode of transportation, such as walking or bicycling.” -*Centers for Disease Control and Prevention*

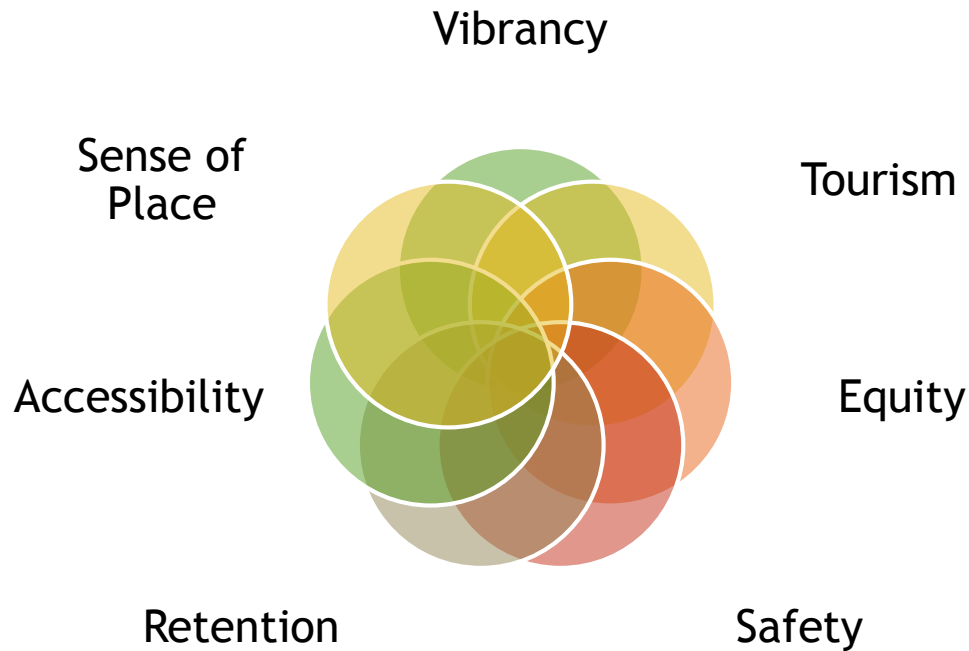


Why Active Transportation Plan?

Health Benefits

Transportation Benefits

Economic Benefits

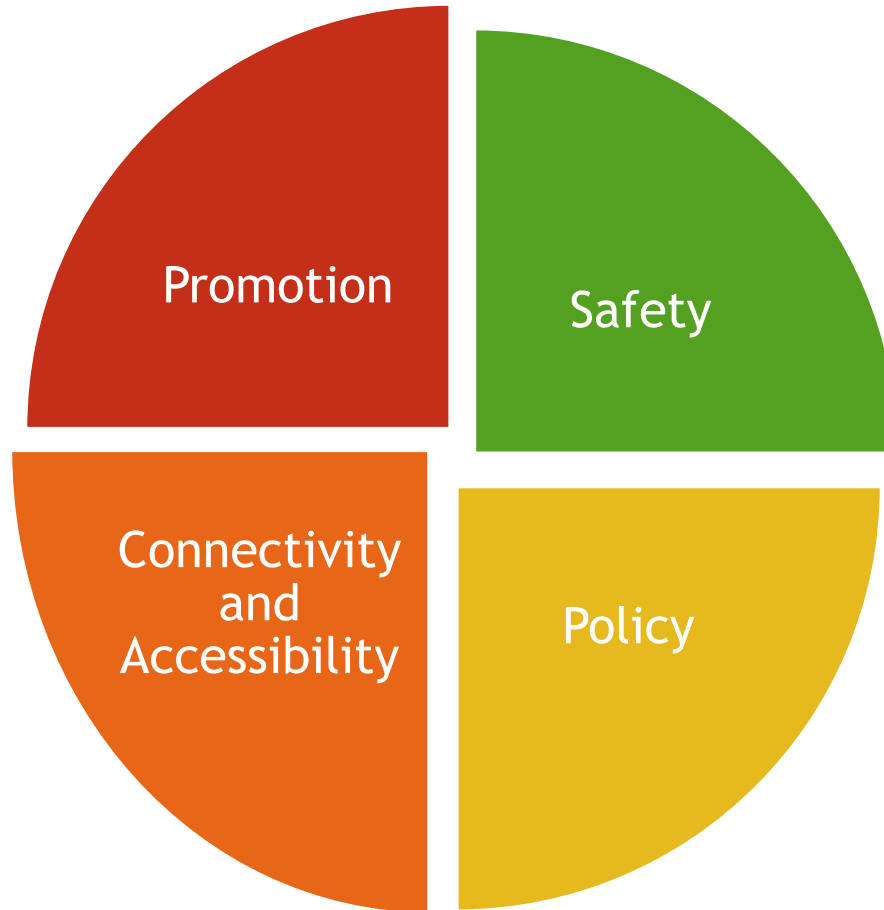


Purpose of MPO Active Transportation Plan

- ▶ Integrated Network with transportation alternatives
- ▶ Policy and project blueprint
- ▶ Useful tools and guidance



Plan Goals



Plan Development Process



- Data collection/Map Review
- Develop and administer online surveys
- Committee/Stakeholder meetings
- Strava Data

- Review data and existing information to identify gaps
- Define purpose/need and goals/objectives

- Strategies and Targets
- Plan Table of Contents and Chapter Drafts
- Network Mapping

- Community Presentations
- Community Input meetings

Jonesboro Metropolitan Planning Commission
 Planning Commission Meeting

1. During the meeting, how frequently do you use each of the following modes of transportation for work or school?

Mode of Transportation	Frequency	Number of Times	Number of Times	Number of Times	Number of Times	Number of Times
Walking						
Bike						
Public Transit						
Other						

2. During the meeting, how frequently do you use each of the following modes of transportation for recreation or exercise?

Mode of Transportation	Frequency	Number of Times	Number of Times	Number of Times	Number of Times	Number of Times
Walking						
Bike						
Public Transit						
Other						

3. How many people in your household walk or bike regularly (10 or more weeks)?

0
1
2
3
4
5



Item	Comments/Action Item	Responsible Party	Due Date
Develop appropriate and usable metrics	Develop by 11/15/17	Staff/Community	11/15/17
Review and update the current network	Review by 11/15/17	Staff/Community	11/15/17
Conduct community meetings	Conduct by 11/15/17	Staff/Community	11/15/17
Develop and update the network	Develop by 11/15/17	Staff/Community	11/15/17
Conduct community meetings	Conduct by 11/15/17	Staff/Community	11/15/17
Develop and update the network	Develop by 11/15/17	Staff/Community	11/15/17
Conduct community meetings	Conduct by 11/15/17	Staff/Community	11/15/17
Develop and update the network	Develop by 11/15/17	Staff/Community	11/15/17
Conduct community meetings	Conduct by 11/15/17	Staff/Community	11/15/17
Develop and update the network	Develop by 11/15/17	Staff/Community	11/15/17
Conduct community meetings	Conduct by 11/15/17	Staff/Community	11/15/17




Public Input Meetings



WE NEED YOUR INPUT ON ACTIVE TRANSPORTATION!

The Jonesboro Metropolitan Planning Organization (MPO) is seeking **public feedback** in the development of a draft **Active Transportation Plan**. The draft plan will outline recommendations for policy development and road treatments that can help enhance the safety, connectivity, and accessibility of all citizens, **particularly pedestrians and cyclists**, throughout the region.

 Contact Us: 300 S. Church St., Jonesboro, AR, 72403 870.933.4623
<http://www.jonesboro.org/191/Metropolitan-Planning-Organization>

Public Meeting Schedule:

September 7, 2017
Time: 4:00-6:00 pm

Location:
Parker Park Community Center
(Conference Room)

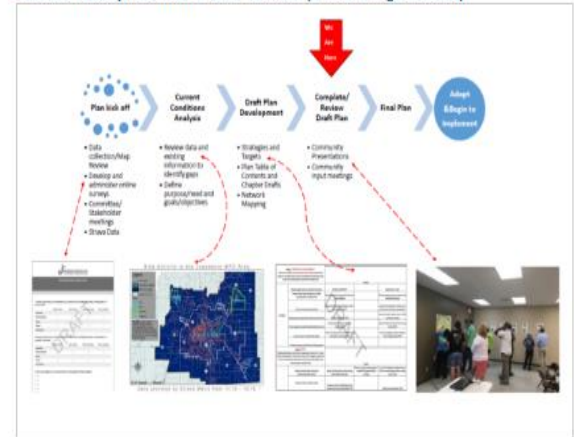
September 12, 2017
Time : 4:00-6:00 pm

Location:
Allen Park Community Center
(Community Room)

Follow Plan Progress...

The screenshot shows the website's navigation structure. The top menu includes 'Government', 'Doing Business', 'Services', 'Visiting Jonesboro', and 'How Do I...'. The 'Government' menu is circled in red and contains 'Elected Officials', 'Departments', 'City Council', and 'Boards & Commissions'. The 'Boards & Commissions' menu is also circled in red and contains 'Metropolitan Planning Organization'. Below the navigation is a banner image of a street corner with a 'CREGE' sign and a 'S MAIN ST 100' sign. On the left is a sidebar with 'Plans and Projects', 'Resources', 'News', 'About Us', 'Archive', 'Receive Notifications', 'Report a Concern', 'Community Activities', and 'Employment Opportunities'. The main content area features a breadcrumb trail: 'Home > Government > Metropolitan Planning Organization > Plans and Projects'. A red box highlights the 'Plans and Projects' link in the breadcrumb. Below this are three sections: 'Metropolitan Transportation Plan (MTP)' with a 'MOMENTUM 2040' graphic, 'FY2016-2020 Transportation Improvement Program (TIP)' with a program poster, and 'FY2018 Unified Planning Work Program (UPWP)'. A background image of a street scene is visible behind the content.

Active Transportation Plan Process (Click Image Below)



- [Active Transportation Plan Public Meeting List 2017](#)
- [A Right to the Road-Understanding & Addressing Bicyclist Safety](#)
- [FHWA Small and Rural Towns Multimodal Networks 2017](#)
- [FHWA Achieving Multi Modal Networks](#)
- [FHWA Bicycle Pedestrian Strategic Agenda](#)
- [FHWA Bike Network Mapping Idea Book](#)
- [Active Transportation Glossary](#)



Thank you!

Jonesboro Metropolitan Planning Organization (MPO)

300 S Church St.

P.O. Box 1845

Jonesboro, AR 72403

Telephone: (870) 933-4623

Email: mpo@jonesboro.org

Web: <http://www.jonesboro.org/191/Metropolitan-Planning-Organization>