

PLANNED UNIT DEVELOPMENT
MULTI - USE

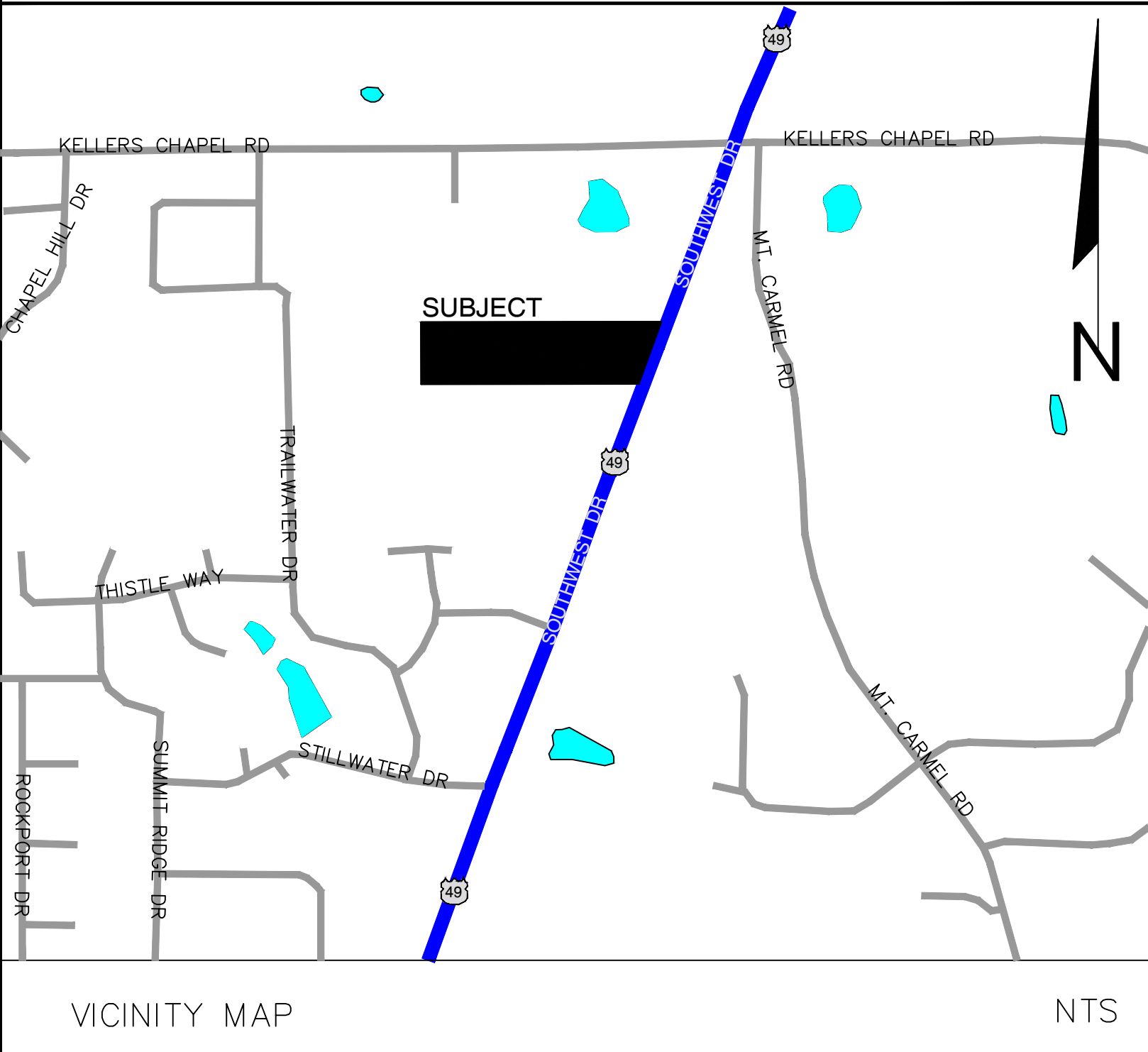
HUFF ADDITION

JONESBORO, ARKANSAS

APRIL, 2013

INDEX TO SHEETS

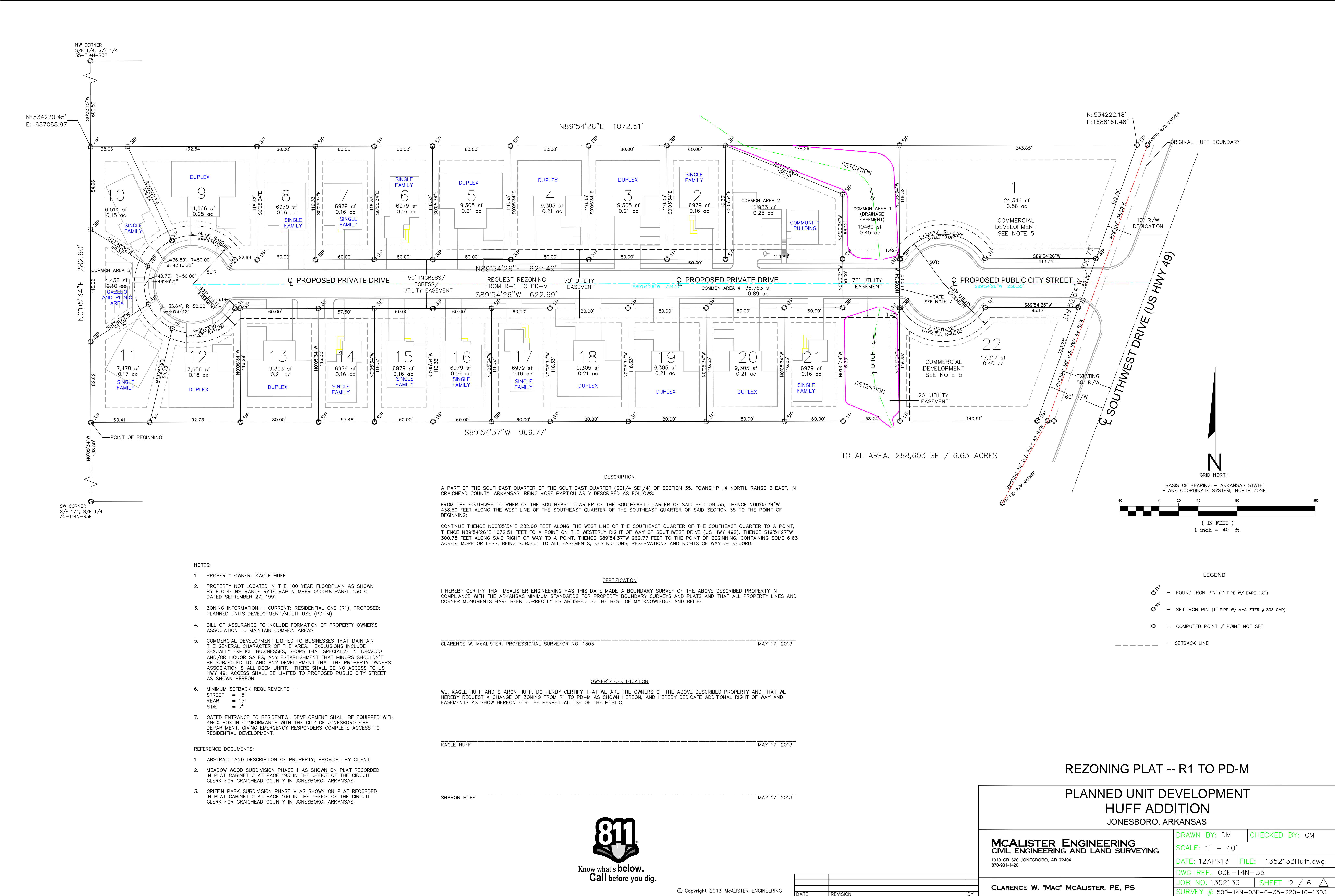
- 1 OF 5 TITLE SHEET / INDEX
- 2 OF 6 PLAT
- 3 OF 6 SITE PLAN
- 4 OF 6 GRADING / DRAINAGE PLAN
- 5 OF 6 PLAN PROFILE
- 6 OF 6 DETAILS




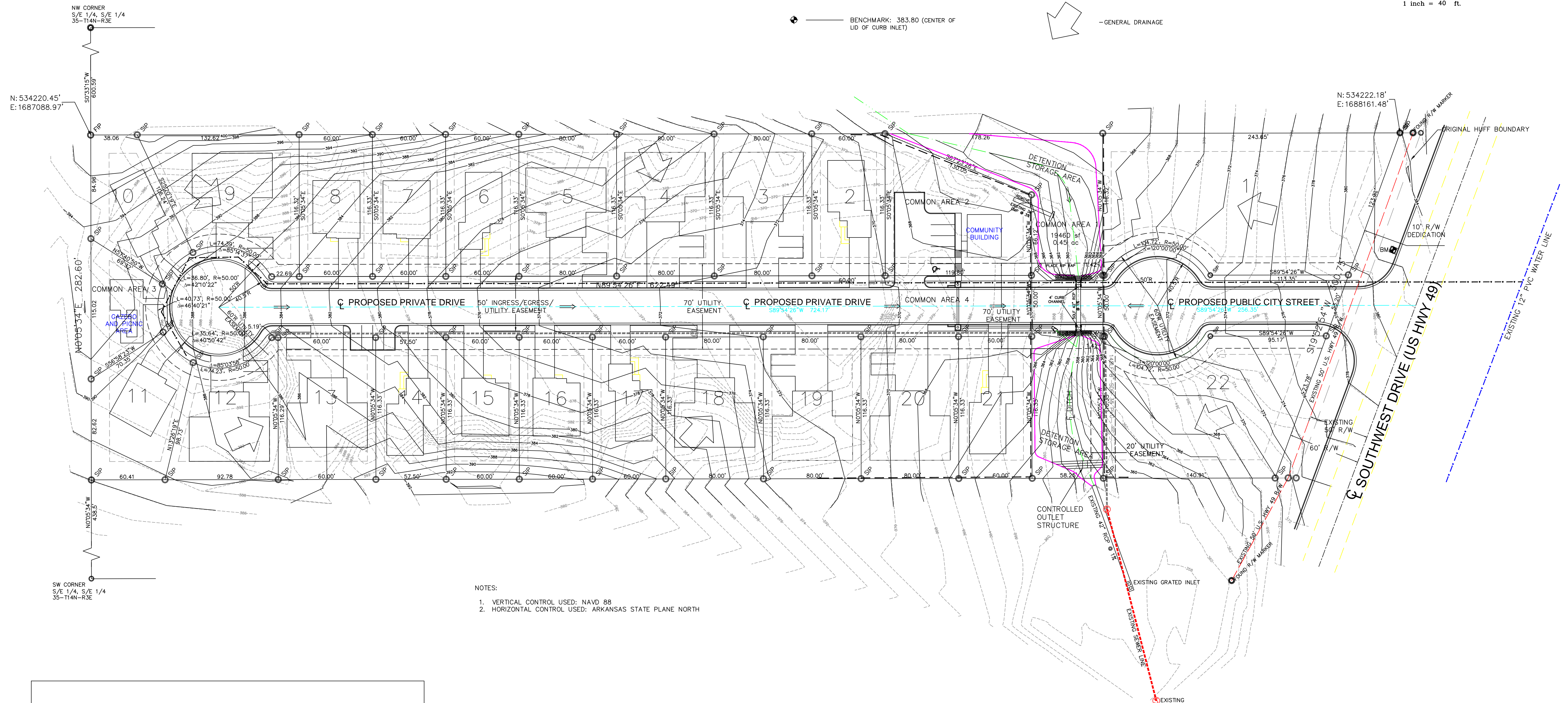
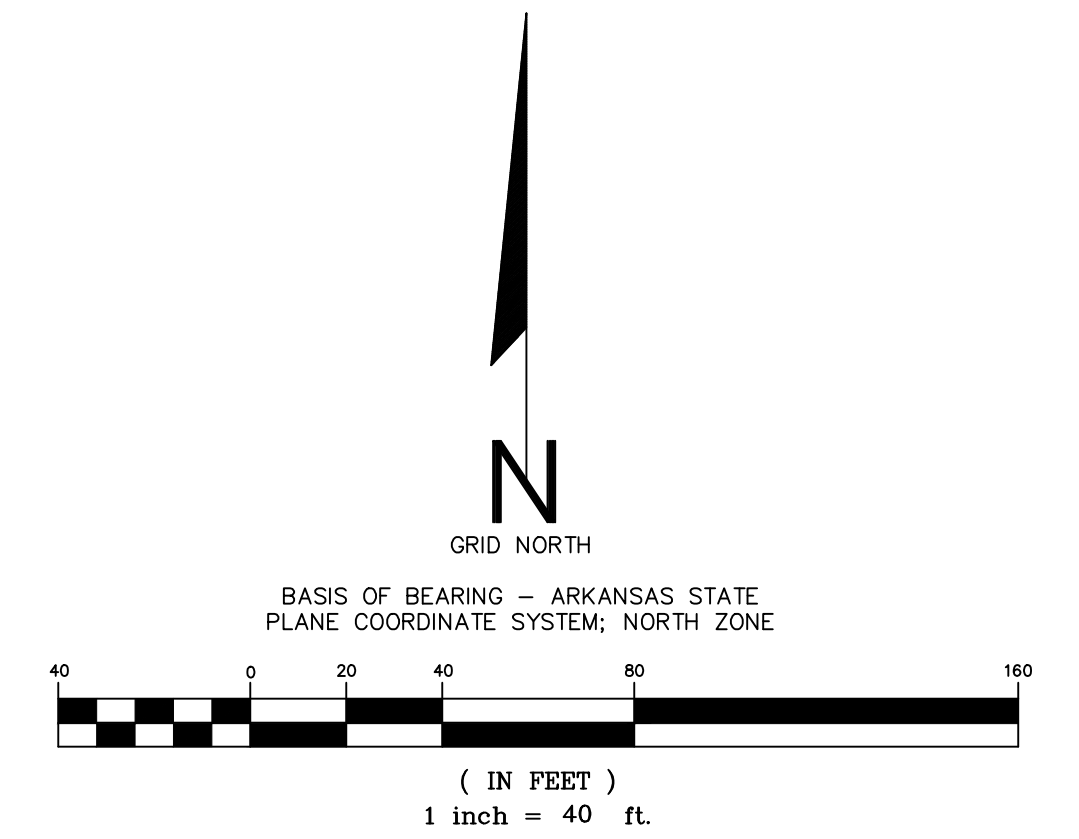
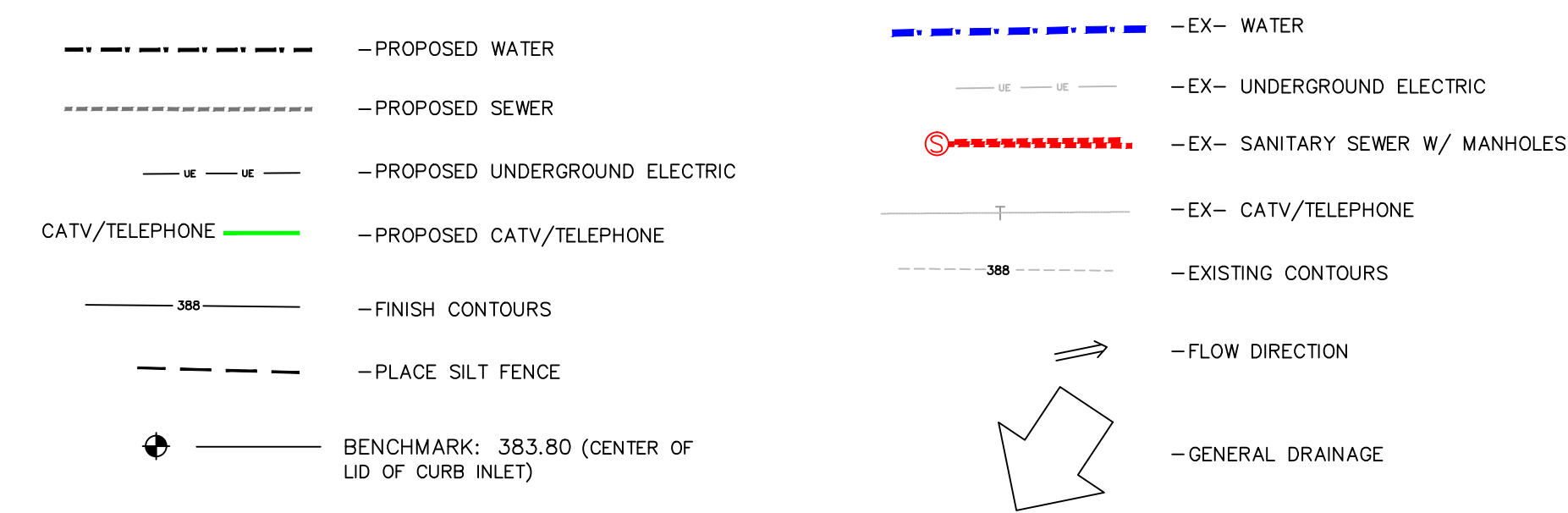
© Copyright 2013 McALISTER ENGINEERING

DATE	REVISION	BY

PLANNED UNIT DEVELOPMENT HUFF ADDITION JONESBORO, ARKANSAS		
MCALISTER ENGINEERING CIVIL ENGINEERING AND LAND SURVEYING 1013 CR 620 JONESBORO, AR 72404 870-931-1420	DRAWN BY: DM	CHECKED BY: CM
	SCALE:	
	DATE: 12APR13	FILE: 1352133Huff.dwg
	DWG REF. 03E-14N-35	
CLARENCE W. "MAC" MCALISTER, PE, PS	JOB NO. 1352133	SHEET 1 / 6 △
	PROJECT	

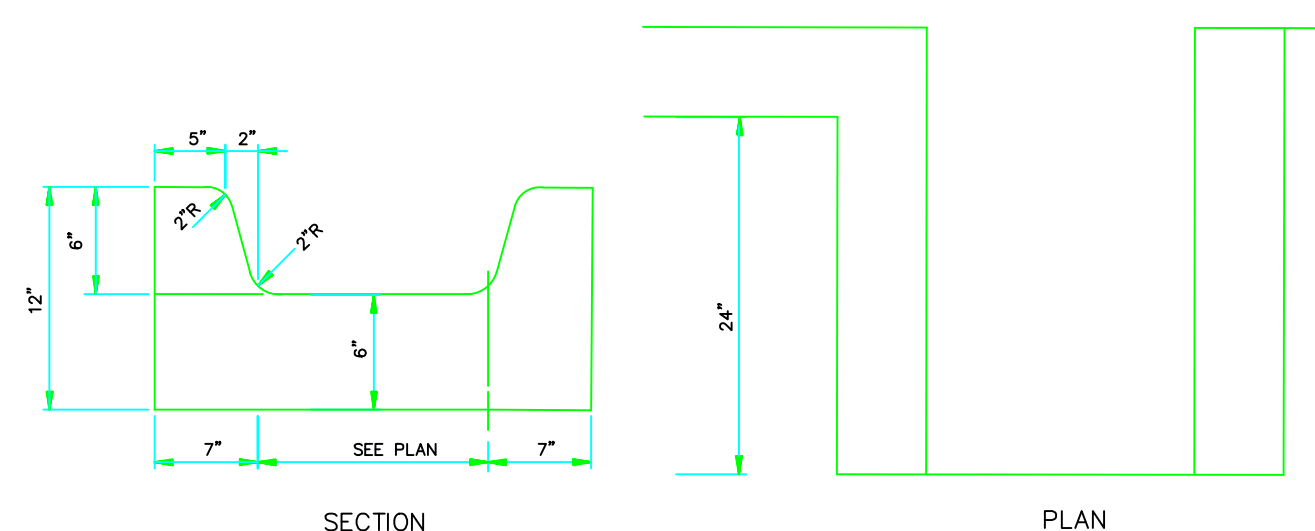


DRAWN BY: DM		CHECKED BY: CM	
SCALE: 1" = 40'			
DATE: 12APR13		FILE: 1352133Huff.dwg	
DWG REF. 03E-14N-35			
JOB NO. 1352133		SHEET 3 / 6 	
PROJECT			



NOTES:

1. VERTICAL CONTROL USED: NAVD 88
2. HORIZONTAL CONTROL USED: ARKANSAS STATE PLANE NORTH



CURB CHANNEL
N.T.S.



Know what's **below**.
Call before you dig.

© Copyright 2013 McALISTER ENGINEERING

DATE	REVISION

PLANNED UNIT DEVELOPMENT
HUFF ADDITION
JONESBORO, ARKANSAS

MCALISTER ENGINEERING
CIVIL ENGINEERING AND LAND SURVEYING

1013 CR 620 JONESBORO, AR 72404
870-931-1420

CLARENCE W. "MAC" MCALISTER, PE, PS

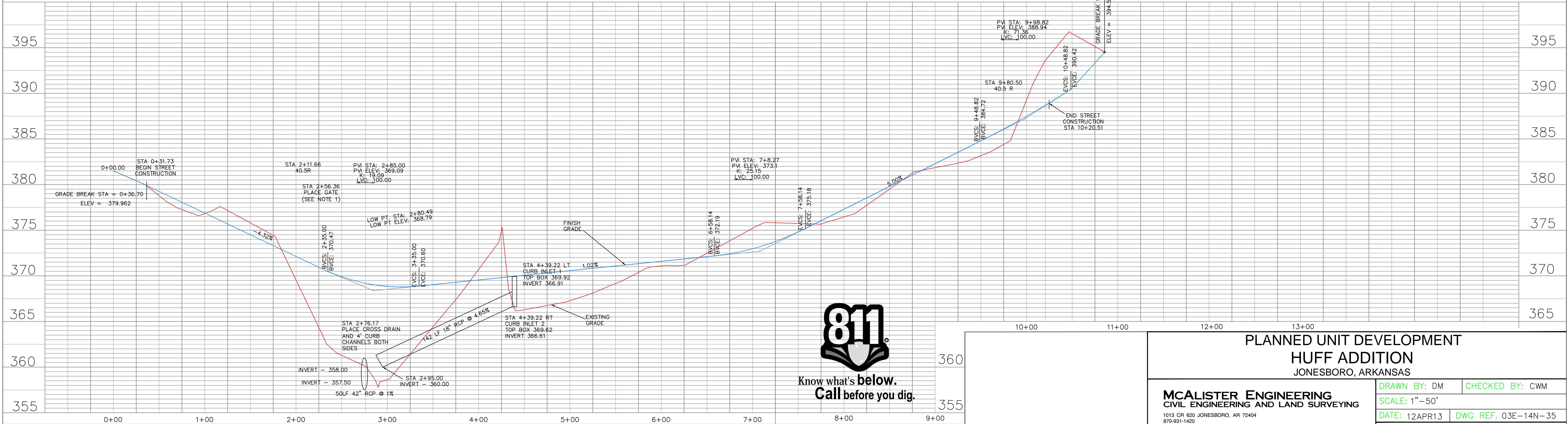
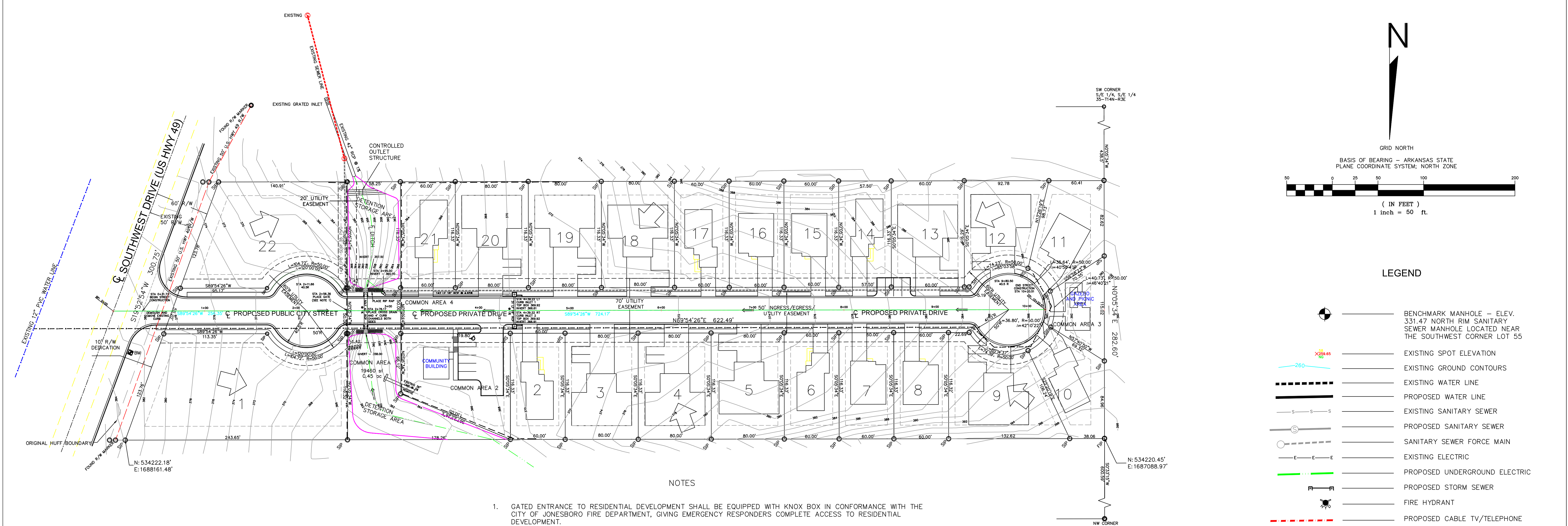
DRAWN BY: DM	CHECKED BY: CM
--------------	----------------

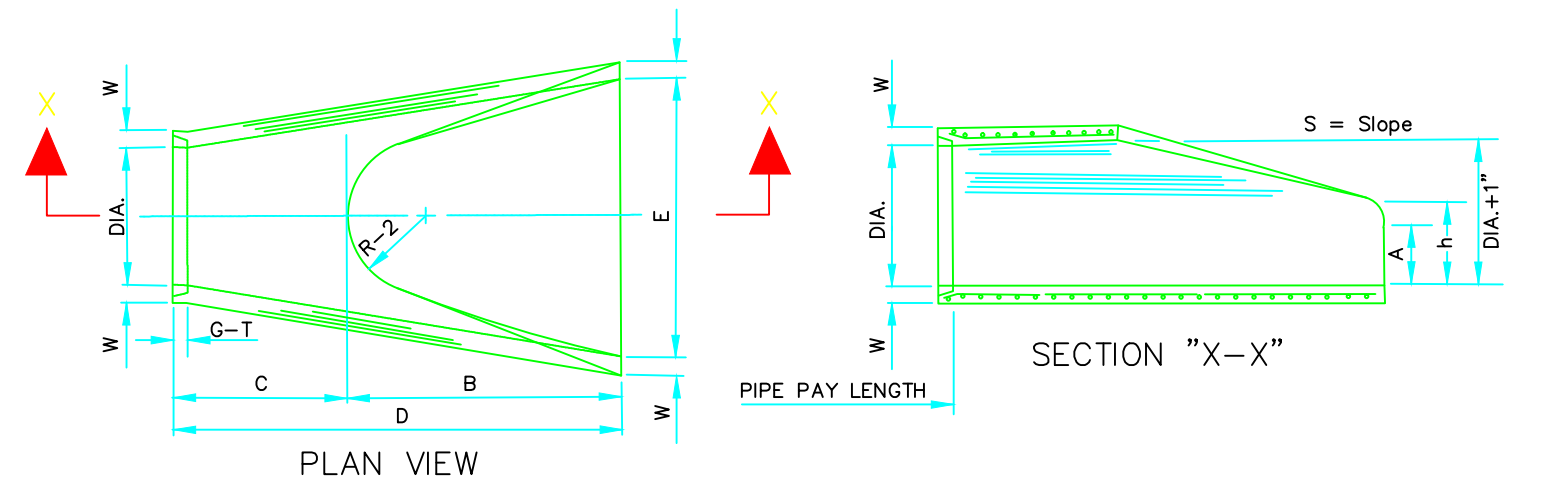
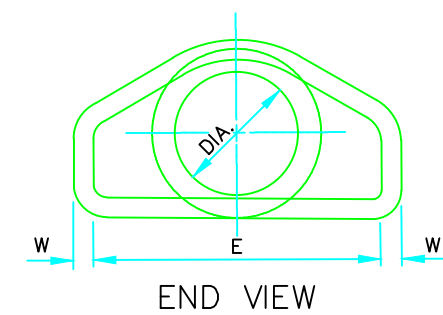
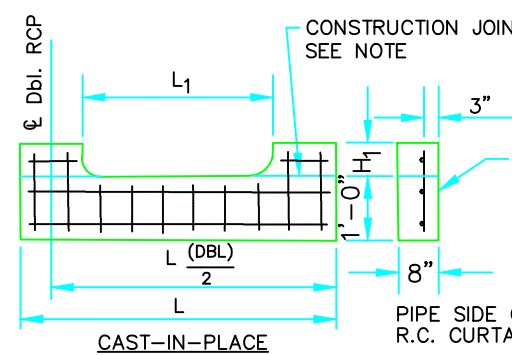
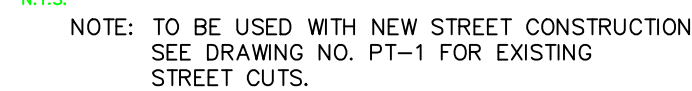
SCALE:

DATE: 12APR13	FILE: 1352133Huff.dwg
---------------	-----------------------

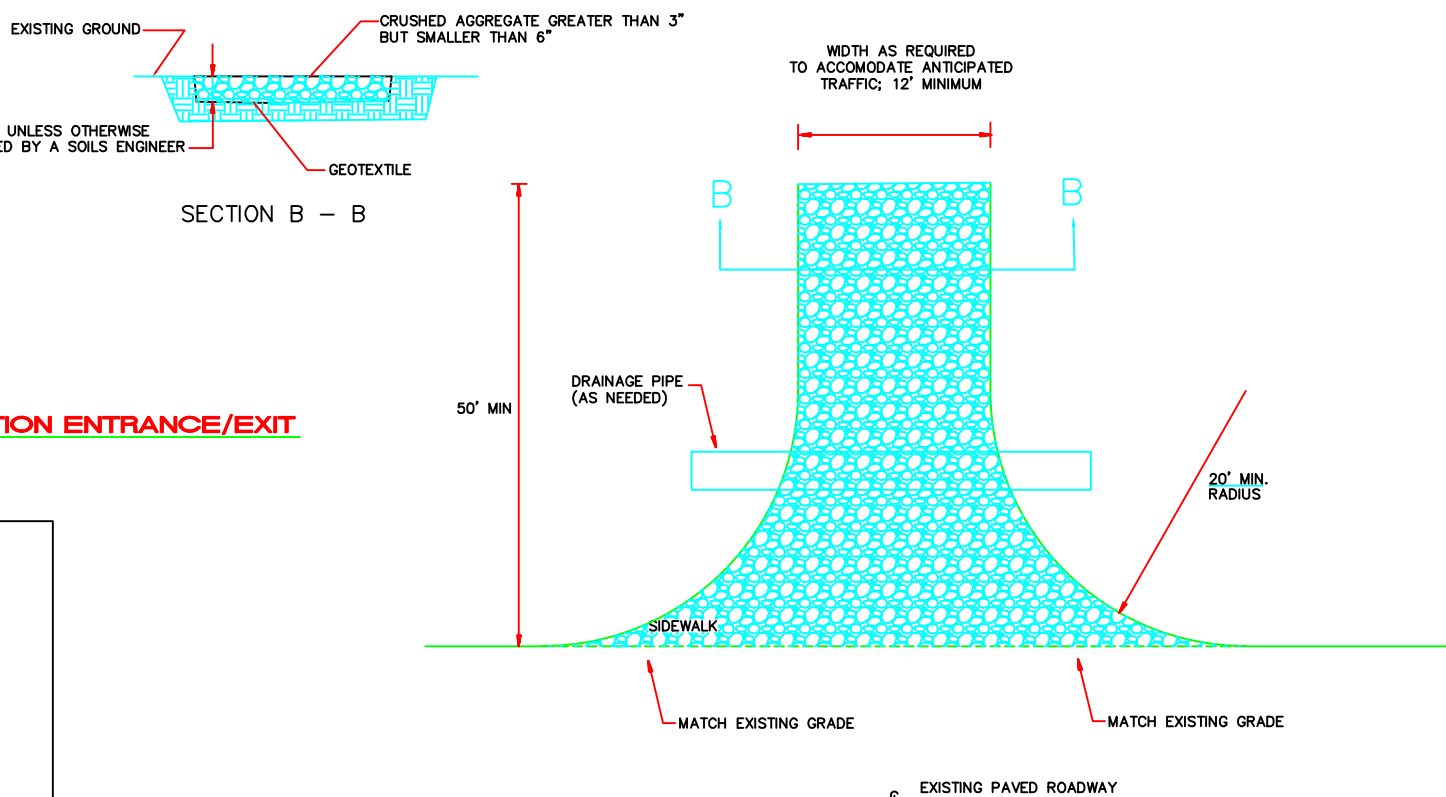
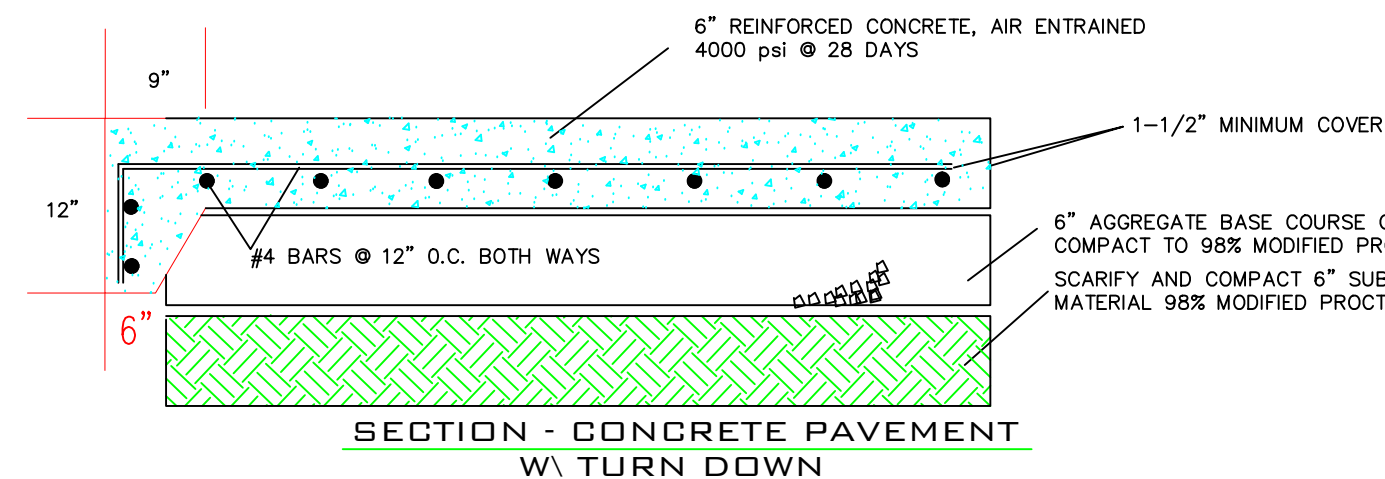
DWG REF. 03E-14N-35

JOB NO. 1352133	SHEET 4 / 6
PROJECT	





NOTES: The portion of the R.C. Curtain Wall beneath the Flared End Section (Lower 1, 1'-0") shall be placed monolithically. The Flared End Section shall then be set in place and the remaining portions of the R.C. Curtain Wall placed. All reinforcing steel are #4 Bars at 6" O.C. 2. No separate payment will be made for the Curtain Walls. They shall be 3. considered subsidiary to the Flared End Sections. 4. Tongue End On Upstream Section. Groove End On Downstream Section.



STABILIZED CONSTRUCTION ENTRANCE/EXIT

A STABILIZED CONSTRUCTION ACCESS IS A DEFINED POINT OF ENTRANCE/EXIT TO A CONSTRUCTION SITE THAT IS STABILIZED TO REDUCE THE TRACKING OF MUD AND DIRT ONTO PUBLIC ROADS BY CONSTRUCTION VEHICLES.

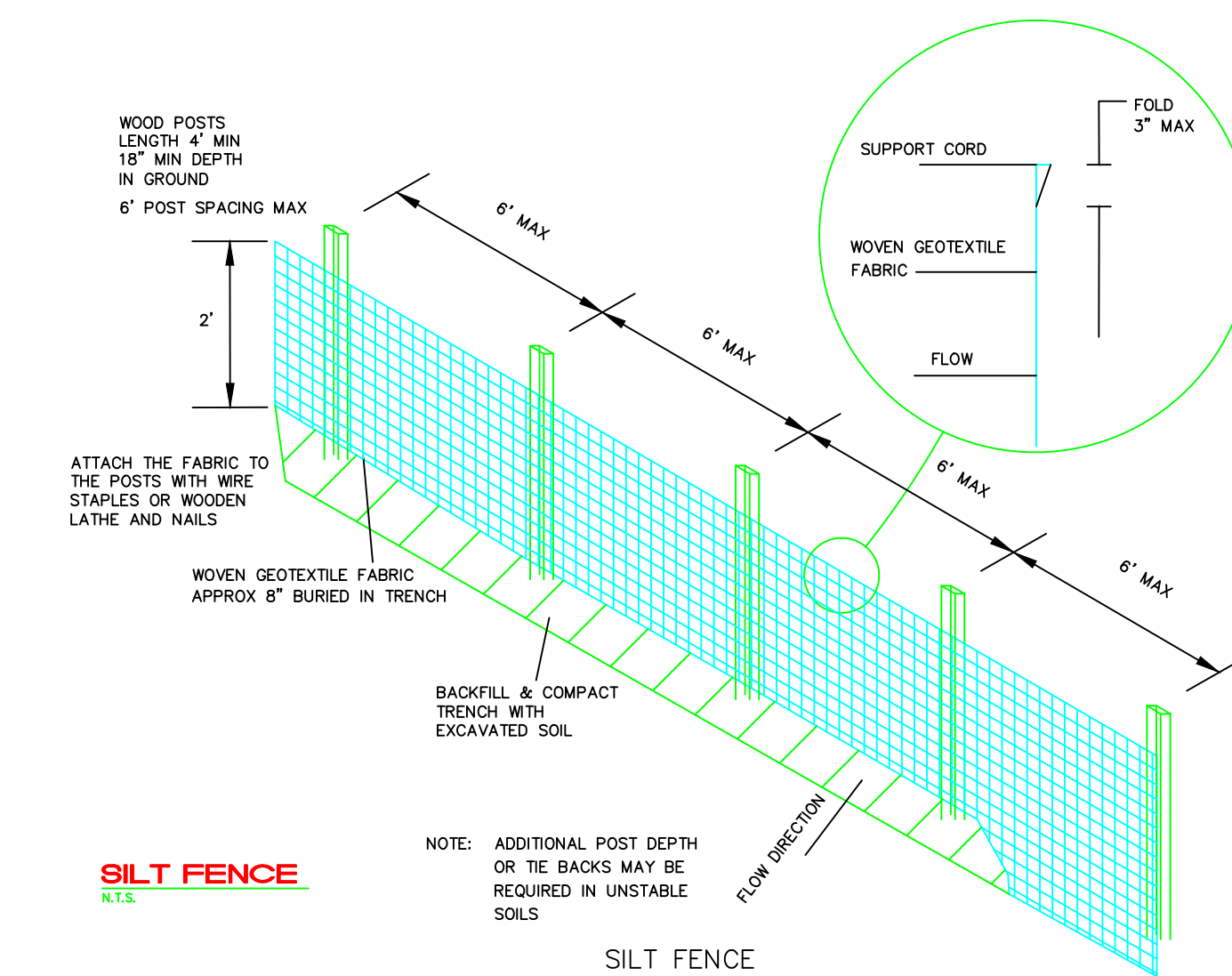
USE STABILIZED CONSTRUCTION ACCESSES WHERE DIRT AND MUD MAY BE TRACKED ONTO PUBLIC ROADS, ADJACENT TO WATER BODIES, WHERE POOR SOILS ARE ENCOUNTERED, WHERE DUST MAY BE A PROBLEM OR AS SPECIFIED BY THE ENGINEER.

CONSTRUCT STABILIZED CONSTRUCTION ENTRANCES WITH CRUSHED AGGREGATE GREATER THAN 3 INCHES BUT SMALLER THAN 6 INCHES
OR OTHER ENGINEER APPROVED MATERIAL. PROPERLY GRADE ENTRANCES/EXITS TO PREVENT RUNOFF FROM LEAVING THE SITE. PLACE A MOUNDED BERM OF MATERIAL IF REQUIRED TO PREVENT STORM WATER RUN ON/RUNOFF AND/OR PROVIDE COVER FOR DRAIN PIPE. ROUTE STORM WATER RUNOFF TO A SEDIMENT CONTROL DEVICE BEFORE RUNOFF EXITS THE SITE.

STABILIZED CONSTRUCTED ENTRANCE SHALL BE MAINTAINED TO PREVENT TRACKING OF SEDIMENT OFF OF THE SITE. REMOVE AND REPLACE AGGREGATE WHEN VOIDS ARE FILLED OR AS DIRECTED BY THE ENGINEER.



SCALE: 1/2" = 1'-0"



NOTE: ADDITIONAL POST DEPTH
OR TIE BACKS MAY BE
REQUIRED IN UNSTABLE
SOILS

SILT FENCE
(NON-REINFORCED)



PLACE GROOVE JOINTS ON 12' INTERVAL

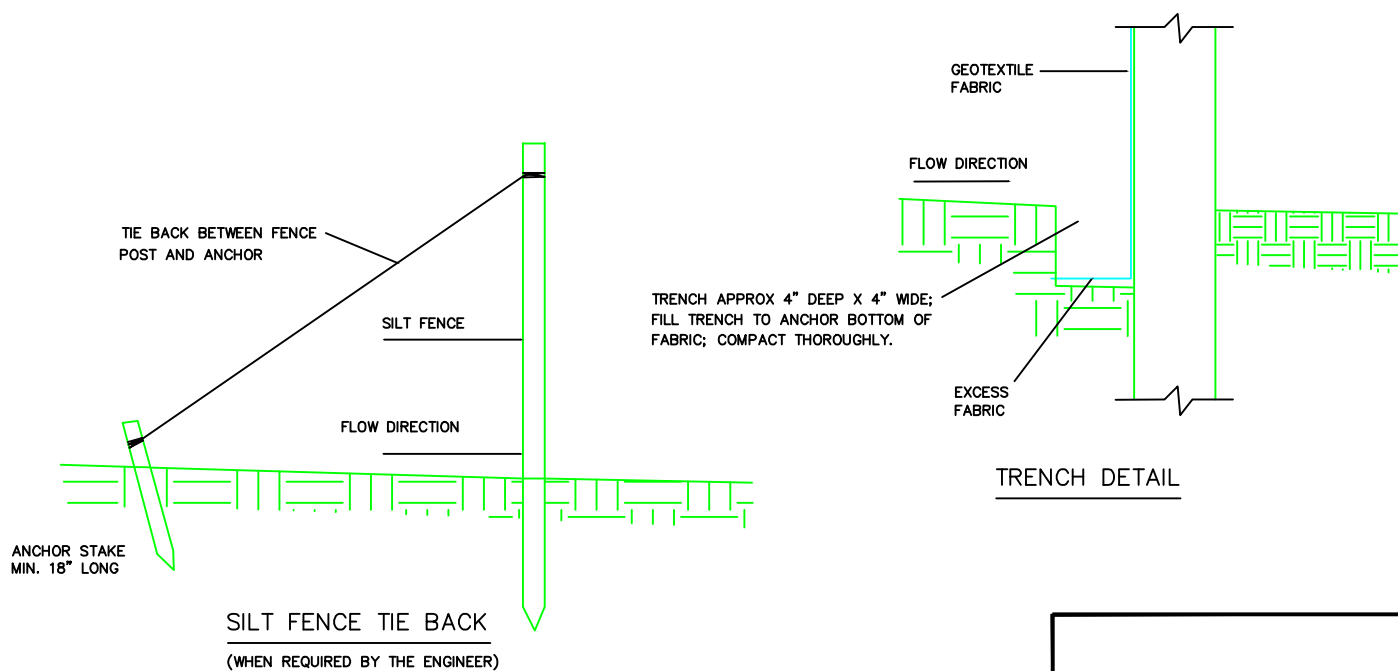


NTS



N.T.S

NOTE: CONTRACTION AND EXPANSION JOINTS SHALL BE
CONSTRUCTED IN ACCORDANCE WITH THE PLANS
AND SPECIFICATIONS.



DETAILS

PLANNED UNIT DEVELOPMENT

HUFF ADDITION

JONESBORO, ARKANSAS

MCALISTER ENGINEERING
CIVIL ENGINEERING AND LAND SURVEYING

1013 CR 620 JONESBORO, AR 72404
870-931-1420

CLARENCE W. "MAC" MCALISTER, PE, PS

DRAWN BY: DM

CHECKED BY: CM

SCALE:

DATE: 12APR13 FILE: 1352133Huff.dwg

DWG REF. 03E-14N-35

JOB NO. 1352

SHEET 6 / 6