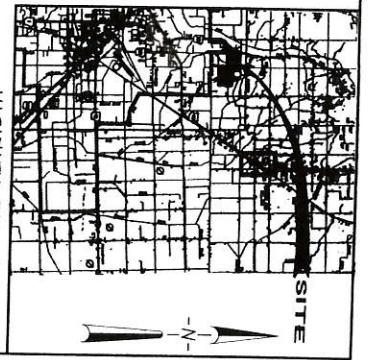
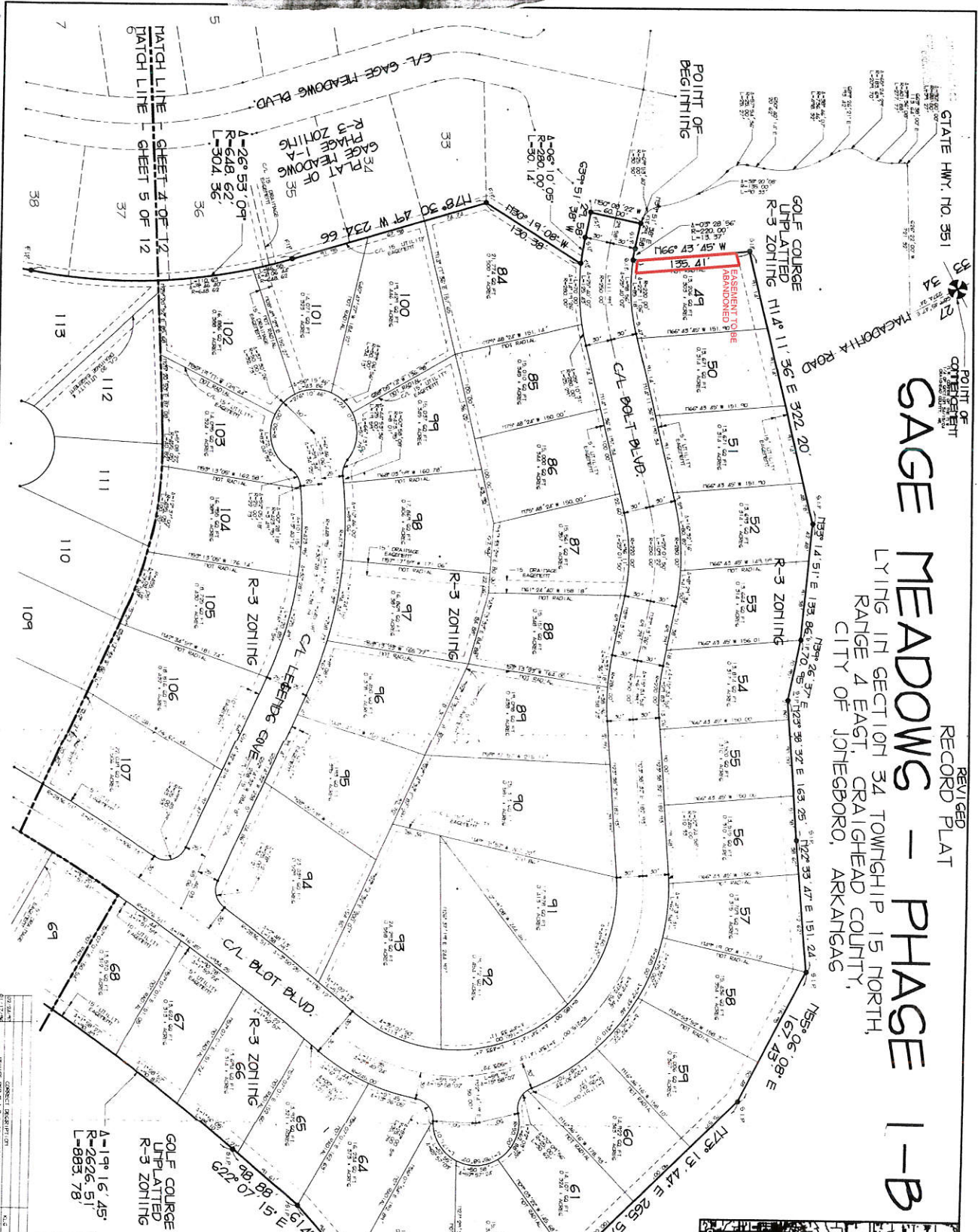


STATE HWY. NO. 351
 POINT OF CONFLICT
 HAZARD

SAGE MEADOWS - PHASE 1-B

LYING IN SECTION 34 TOWNSHIP 15 NORTH,
 RANGE 4 EAST, CRAIGHEAD COUNTY,
 CITY OF JOHNSBORO, ARKANSAS

REVISED
 RECORD PLAT



GOLF COURSE UNPLATTED R-3 ZONING

PROFESSIONAL SEAL
 ARCHITECT
 REGISTERED ARCHITECT
 PREPARED BY
 DATE

GRAPHIC SCALE
 IN FEET

LEGEND

GOLF COURSE UNPLATTED R-3 ZONING
 A-19° 16' 45" R-2626.51' L-883.78'

RECORD PLAT
 SAGE MEADOWS - PHASE 1-B
 JOHNSBORO, ARKANSAS

ASSOCIATED ENGINEERING CO.
 ENGINEERS AND LAND SURVEYORS
 500 W. 2ND ST., JOHNSBORO, ARK.

NO.	DATE	DESCRIPTION
1	11/15/11	PRELIMINARY
2	11/15/11	REVISION
3	11/15/11	REVISION
4	11/15/11	REVISION
5	11/15/11	REVISION
6	11/15/11	REVISION
7	11/15/11	REVISION
8	11/15/11	REVISION
9	11/15/11	REVISION
10	11/15/11	REVISION

