

STEP Study Summary – Hwy 141



STEP Study

In 2017, the Northeast Arkansas Regional Transportation Planning Commission (N.A.R.T.P.C.) received federal funding through the Statewide Transportation Innovation Council (STIC) to conduct a STEP (Safe Transportation for Every Pedestrian) study to help identify safety countermeasures for dangerous mid-block crossings at pre-selected locations within the region. The study encompassed the following locations: **(1)** the intersection of Highway 91/E. Johnson Ave. and State Street and **(2)** Highway 141/N. Church St. (corridor between Allen Ave. to Alpine St.). These locations were identified during a previous Pedestrian/Bicycle Safety Study of downtown Jonesboro conducted by Lose Associates Inc. in 2015.

Recommendations

The study of Highway 141 (N. Church Street corridor) was conducted by Garver USA in collaboration with the N.A.R.T.P.C. and the Arkansas Department of Transportation, and concluded in December 2019. The main identified recommendations include:

- ❖ **Installation of continuous ADA compliant sidewalks**
 - With ADA compliant wheelchair ramps along the entirety of the study corridor
- ❖ **Addition of an unsignalized crosswalk at Alpine St.**
 - With ADA compliant wheelchair ramps, high-visibility crosswalk markings, stop bars, advance “Yield Here” signs, and in-street pedestrian crossing signs
- ❖ **Update of existing Novak St. crossing**
 - With ADA compliant wheelchair ramps, high-visibility crosswalk markings, stop bars, in-street pedestrian crossing signs
 - Replace current “pedestrian crossing” signs with “yield here to pedestrian” signs
 - Ensure that the crosswalk is directly aligned to connect to the wheelchair ramps and sidewalk rather than leading into Novak St. or a driveway
- ❖ **Addition of a crosswalk and Pedestrian Hybrid Beacon 100 feet north of Bradley St.**
 - With ADA compliant wheelchair ramps, advance warning signs to the north and south of the horizontal curves within the area, high-visibility crosswalk markings, stop bars, and in-street pedestrian crossing signs
 - Removal of trees limiting sight distance
- ❖ **Installation of bench/refuge area at the JET transit stop located between Woodrow & Forrest St.**
- ❖ **Addition/Improvement of area lighting at and/or near crosswalk locations**

Cost

The estimated construction cost for the recommended improvements is approximately \$772,000. Additionally, the proposed installation of a Pedestrian Hybrid Beacon is projected to add an average of 2.8 seconds of delay for each vehicle travelling within the study corridor.

Moving Forward

It is the hope of the N.A.R.T.P.C. to continue to collaborate with the city of Jonesboro and ARDOT to explore funding alternatives to implement proposed improvements to Highway 141/N. Church Street in order to promote public safety in that area.

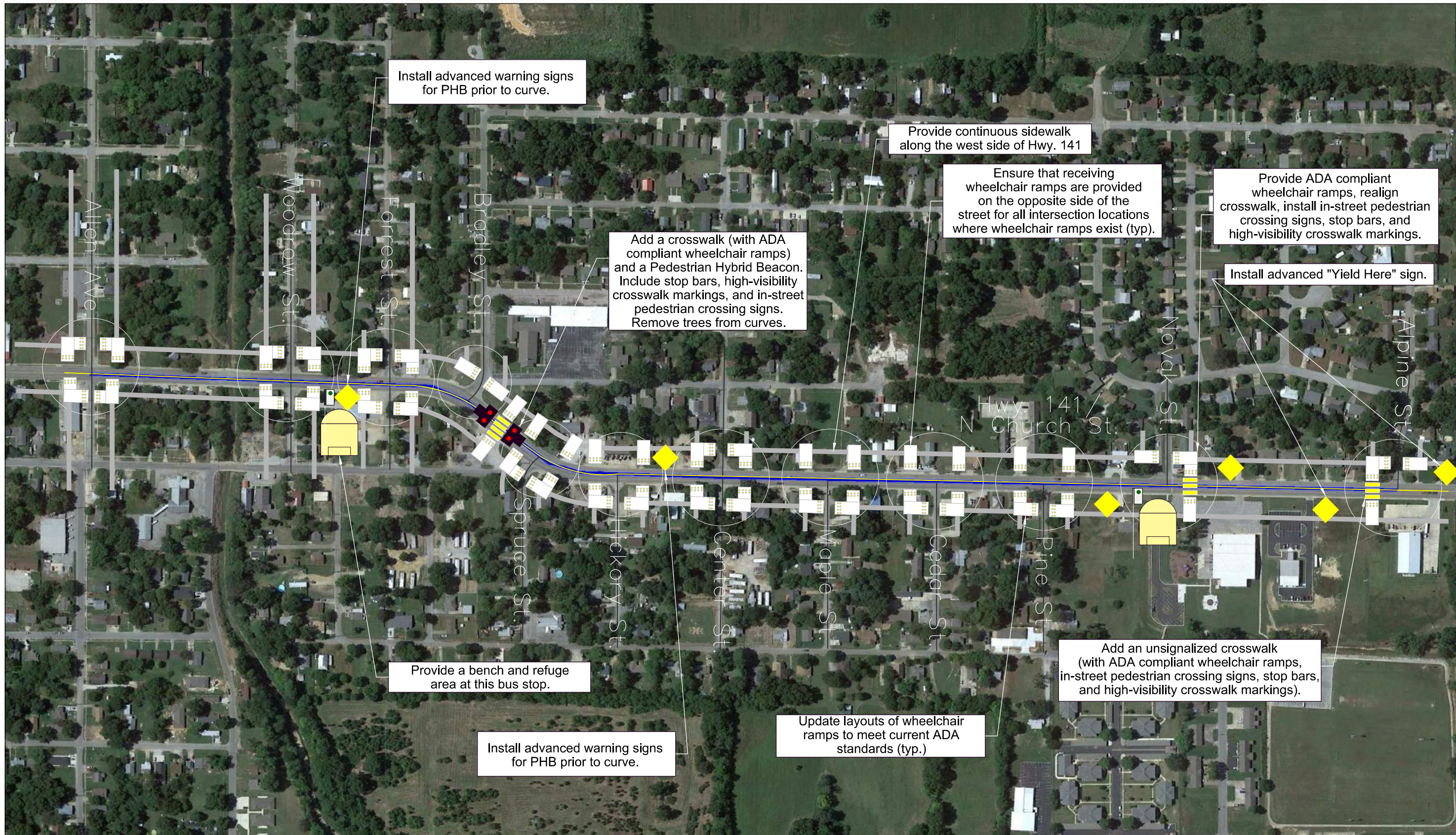
**A map of the given recommendations has been provided on the next page*

**To access the full Highway 141 corridor report, click: https://www.jonesboro.org/DocumentCenter/View/6360/Hwy-141-STEP-Report_FinalCombined-122019*

Figure 9

**Hwy. 141 STEP Innovation Study
Conceptual Layout of Recommended Countermeasures**

June 2019



LEGEND:

Sidewalk	Wheelchair Ramp	Bus Stop	Intersection
Hwy. 141	Crosswalk	Pedestrian Hybrid Beacon	Advanced Warning Sign
Cross Street	Bench and Shelter		

Additional Improvements:

- Maintain adequate widths, slopes, and quality of pavement for all sidewalks and wheelchair ramps.
- Provide additional/improved lighting at all crosswalk locations.

