



# BARRINGTON PARK PHASE IX

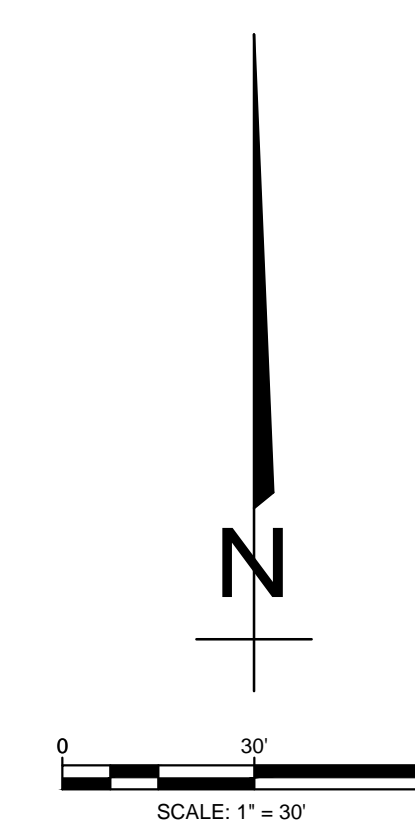
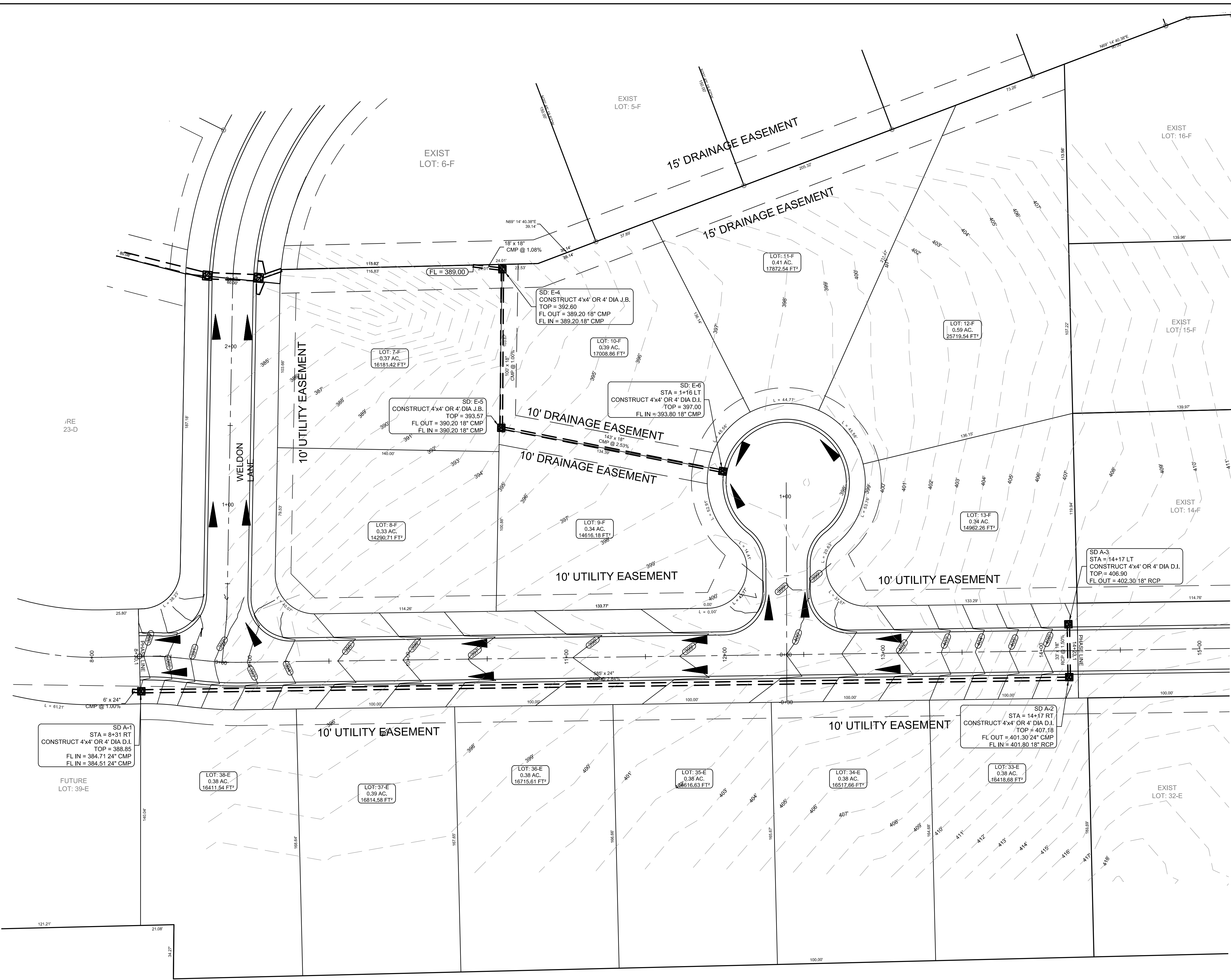
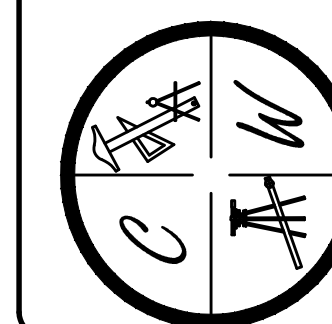
JONESBORO, AR

TOPOGRAPHY  
& DRAINAGE PLAN

DATE: 11/24/15  
REV:

DRAWN BY: BGW

CARLOS WOOD, P.E.  
ENGINEERING CONSULTANT  
148 CR 375  
BONO, AR 72416  
PHONE/FAX: (870) 972-8335  
EMAIL: WOODENGR@SBCGLOBAL.NET  
WEBSITE: WWW.WOODENGR.COM



LEGEND	
	CURB
	EXISTING CONTOUR
	PROPOSED CONTOUR
	STORM DRAIN INLET
	STORM DRAIN PIPE
	BENCHMARK

**PIPE NOTE:**  
ALL PIPE SHALL MEET THE FOLLOWING STANDARDS.

- ALUMINIZED STEEL TYPE 2 STEEL PIPE
  - ASTM A-929
  - ASTM A-760
- RCP CLASS III OR CLASS IV
  - ASTM C-76
  - ASTM C-506
  - ASTM C-507

**NOTE:**  
DEVELOPER SHALL OBTAIN GRADING PERMIT FROM THE CITY OF JONESBORO ENGINEERING DEPARTMENT PRIOR TO COMMENCING EARTHWORK AND/OR CLEARING OPERATIONS.  
  
DEVELOPER SHALL OBTAIN ADEQ PERMIT PRIOR TO COMMENCING WORK ON THE SITE. PREPARE A SWPP PLAN, AND DISPLAY THEM FOR PUBLIC ACCESS AT THE SITE.

**SURVEY CONTROL REFERENCE MARKS:**

- JONESBORO MONUMENT # 89
- JONESBORO MONUMENT # 43

VERTICAL CONTROL IS NAVD 88  
HORIZONTAL CONTROL IS NAD 83

SD A-1  
STA = 8+31 RT  
CONSTRUCT 4"x4" OR 4" DIA D.I.  
TOP = 388.85  
FL IN = 384.71 24" CMP  
FL IN = 384.51 24" CMP

LOT: 38-E  
0.38 AC.  
16411.54 FT<sup>2</sup>

LOT: 37-E  
0.39 AC.  
16814.58 FT<sup>2</sup>

LOT: 36-E  
0.38 AC.  
16715.61 FT<sup>2</sup>

LOT: 35-E  
0.38 AC.  
16616.63 FT<sup>2</sup>

LOT: 34-E  
0.38 AC.  
16517.66 FT<sup>2</sup>

LOT: 33-E  
0.38 AC.  
16418.68 FT<sup>2</sup>

SD A-2  
STA = 14+17 RT  
CONSTRUCT 4"x4" OR 4" DIA D.I.  
TOP = 407.58  
FL OUT = 401.30 24" CMP  
FL IN = 401.80 18" RCP

SD A-3  
STA = 14+17 LT  
CONSTRUCT 4"x4" OR 4" DIA D.I.  
TOP = 406.80  
FL OUT = 402.30 18" RCP

SD E-6  
STA = 1+16 LT  
CONSTRUCT 4"x4" OR 4" DIA D.I.  
TOP = 397.00  
FL IN = 393.80 18" CMP

SD E-5  
CONSTRUCT 4"x4" OR 4" DIA J.B.  
TOP = 393.57  
FL OUT = 390.20 18" CMP  
FL IN = 390.20 18" CMP

SD E-4  
CONSTRUCT 4"x4" OR 4" DIA J.B.  
TOP = 392.80  
FL OUT = 389.20 18" CMP  
FL IN = 389.20 18" CMP

LOT: 7-F  
0.37 AC.  
16181.42 FT<sup>2</sup>

LOT: 10-F  
0.39 AC.  
17008.86 FT<sup>2</sup>

LOT: 12-F  
0.59 AC.  
25719.54 FT<sup>2</sup>

LOT: 11-F  
0.41 AC.  
17872.54 FT<sup>2</sup>

LOT: 8-F  
0.33 AC.  
14298.71 FT<sup>2</sup>

LOT: 9-F  
0.34 AC.  
14616.18 FT<sup>2</sup>

LOT: 13-F  
0.34 AC.  
14692.26 FT<sup>2</sup>

EXIST LOT: 32-E

EXIST LOT: 14-F

EXIST LOT: 15-F

EXIST LOT: 16-F

EXIST LOT: 5-F

EXIST LOT: 6-F

IRE 23-D