



City of Jonesboro

300 S. Church Street
Jonesboro, AR 72401

Signature Copy

Resolution: R-EN-072-2022

File Number: RES-22:072

Enactment Number: R-EN-072-2022

A RESOLUTION OF THE CITY OF JONESBORO, ARKANSAS TO ENTER INTO A CHANGE ORDER WITH RAMSONS INC. FOR THE JONESBORO SHOOTING SPORTS COMPLEX PHASE 1C (2020:07)

WHEREAS, Resolution 20:025 authorized the City of Jonesboro to enter into a contract for the construction of the Jonesboro Shooting Sports Complex Phase 1C with Ramsons Inc.;

WHEREAS, the City of Jonesboro desires to change the project with a Change Order as detailed in the attached Proposal Request increasing the contract amount by \$380,664.00; and,

WHEREAS, funding for the execution of the change order shall come from the Capital Improvement Carryover budget and compensation shall be paid in accordance with the contract documents.
NOW, THEREFORE BE IT RESOLVED, BY THE CITY COUNCIL OF THE CITY OF JONESBORO, ARKANSAS;

Section 1: That the City of Jonesboro hereby accepts a Change Order in the amount of \$380,664.00 from Ramsons Inc. for six (6) remaining trap fields for the Jonesboro Shooting Sports Complex Phase 1C construction.

Section 2. That funding for the execution of the change order shall come from the Capital Improvement Carryover budget and compensation shall be paid in accordance with the contract documents.

Section 3. The Mayor and the City Clerk are hereby authorized by the City Council for the City of Jonesboro to execute a Change Order and direct the Purchasing Agent to increase the Purchase Order amount.

PASSED AND APPROVED THIS 19TH DAY OF APRIL 2022.



RAMSONS INC.
GENERAL CONTRACTORS
3111 DAN AVENUE
P.O. BOX 9185 JONESBORO, AR 72403-9185

PHONE (870) 935-1210 FAX (870) 972-9255

April 6, 2022

Brian Richardson
Chief Administrative Officer
City of Jonesboro
300 South Church Street
Jonesboro, AR 72401

Re: Price for Completing Trap Fields at the Jonesboro Shooting Complex REVISED

Mr. Richardson:

Per your request, we are pleased to quote you the sum of \$380,664.00 to provide all labor and material required to complete the 6 remaining trap fields at the Jonesboro Shooting Complex. Our quote is based upon the attached PR #7.

If you have any questions or comments, please do not hesitate to contact me.

Sincerely,

Ramsons, Inc.

Scott McDaniel
Vice President

Attachments

Cc: Kyle Cook, Craig Light



Proposal Request (PR)

Project: City of Jonesboro:
Jonesboro Shooting Sports Complex
Jonesboro, Arkansas

PR # (7) Seven
Project # 12015-IC
Date: 03.31.22

Owner: City of Jonesboro

Architect: Brackett-Krennerich
& Associates P.A.
100 E. Huntington Ave. Suite D
Jonesboro, AR 72401

Contractor: Ramsons Inc.
General Contractors
3111 Dan Avenue
Jonesboro, AR 72403

Owner (email)
 Contractor (email)
 Consultant (email)
 Field (email)
 Other: BK Office (email)

Attn: Scott McDaniel

Please submit an itemized quotation for changes in the Contract Sum and/or Time incidental to proposed modifications to the Contract Documents described herein. **This is not a change order nor a direction to proceed with the work described herein.**

Description:

Please provide the following modifications (Modifications indicated by delta "3")

- **Provide (6) trap fields and connecting walk as indicated on drawings on either side of trap/skeet fields.**
- **Provide (6) trap houses as indicated (and including the following items at each location):**
 - Sump pump
 - Electrical power as indicated (Refer to 5/E201 for requirements)
 - Lighting as indicated
 - Trap machine; Owner will set machine and calibrate.
 - Provide monumental sign at walk as detailed on C004.1.
 - Provide 2" conduit for trap controls back to central point for future controls and future clubhouse.



**BRACKETT
KRENNERICH**

architects

Attachments:

C003.6 – Trap Field Layout, C004 (Revised), C004.6 – Trap Field Layout,

Issued by:

Kyle Cook, A.I.A. (Architect)

(Printed name and title)



CITY OF JONESBORO
JONESBORO SHOOTING
PHASE IIC
SPORTS COMPLEX
Jonesboro, Arkansas

BRACKETT
KRENNERICH
architects

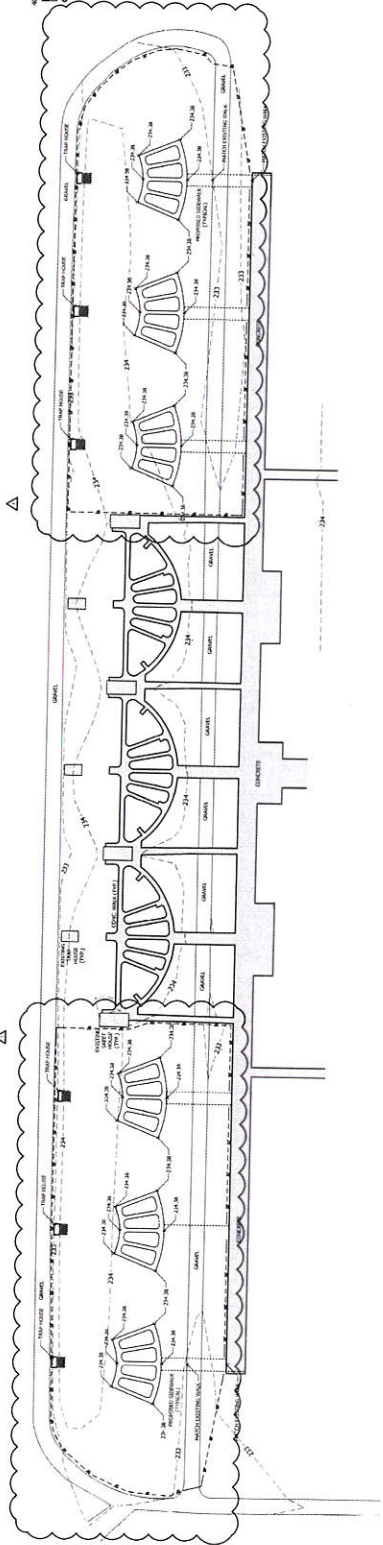
Project No.:	20230131
Project Name:	BRACKETT KRENNERICH ARCHITECTS
Client:	CITY OF JONESBORO
Site:	
Scale:	
Date:	



Commission Number
12015 IC
C003.6



Date: MAY 11, 2022

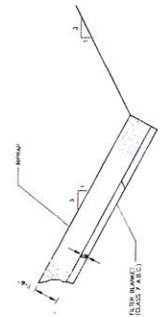


SITE NOTES

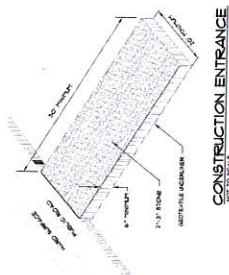
- ALL DIMENSIONS ARE TO THE FACE OF CURB, UNLESS OTHERWISE NOTED.
- ALL CURB AND RAMP PANELS ARE 12x24x4 INCH CONCRETE.
- ALL CURB AND RAMP PANELS ARE 12x24x4 INCH CONCRETE. ALL CURB AND RAMP PANELS ARE TO BE CONCRETE WITH 1/2" REBAR. ALL CURB AND RAMP PANELS ARE TO BE CONCRETE WITH 1/2" REBAR. ALL CURB AND RAMP PANELS ARE TO BE CONCRETE WITH 1/2" REBAR.
- ALL CURB AND RAMP PANELS ARE 12x24x4 INCH CONCRETE. ALL CURB AND RAMP PANELS ARE TO BE CONCRETE WITH 1/2" REBAR. ALL CURB AND RAMP PANELS ARE TO BE CONCRETE WITH 1/2" REBAR.
- ALL CURB AND RAMP PANELS ARE 12x24x4 INCH CONCRETE. ALL CURB AND RAMP PANELS ARE TO BE CONCRETE WITH 1/2" REBAR. ALL CURB AND RAMP PANELS ARE TO BE CONCRETE WITH 1/2" REBAR.
- ALL CURB AND RAMP PANELS ARE 12x24x4 INCH CONCRETE. ALL CURB AND RAMP PANELS ARE TO BE CONCRETE WITH 1/2" REBAR. ALL CURB AND RAMP PANELS ARE TO BE CONCRETE WITH 1/2" REBAR.
- ALL CURB AND RAMP PANELS ARE 12x24x4 INCH CONCRETE. ALL CURB AND RAMP PANELS ARE TO BE CONCRETE WITH 1/2" REBAR. ALL CURB AND RAMP PANELS ARE TO BE CONCRETE WITH 1/2" REBAR.
- ALL CURB AND RAMP PANELS ARE 12x24x4 INCH CONCRETE. ALL CURB AND RAMP PANELS ARE TO BE CONCRETE WITH 1/2" REBAR. ALL CURB AND RAMP PANELS ARE TO BE CONCRETE WITH 1/2" REBAR.
- ALL CURB AND RAMP PANELS ARE 12x24x4 INCH CONCRETE. ALL CURB AND RAMP PANELS ARE TO BE CONCRETE WITH 1/2" REBAR. ALL CURB AND RAMP PANELS ARE TO BE CONCRETE WITH 1/2" REBAR.
- ALL CURB AND RAMP PANELS ARE 12x24x4 INCH CONCRETE. ALL CURB AND RAMP PANELS ARE TO BE CONCRETE WITH 1/2" REBAR. ALL CURB AND RAMP PANELS ARE TO BE CONCRETE WITH 1/2" REBAR.

EROSION CONTROL MEASURES

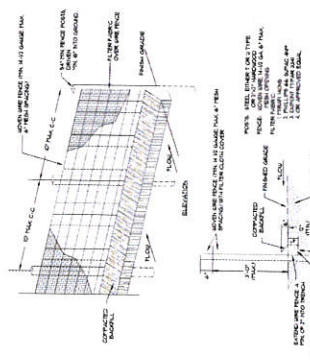
- THE PURPOSE OF THIS PLAN IS TO CLEARLY DEFINE THE EROSION CONTROL MEASURES TO BE INSTALLED AND MAINTAINED THROUGHOUT THE CONSTRUCTION PHASE OF THE PROJECT. THESE MEASURES WILL BE INSTALLED AND MAINTAINED THROUGHOUT THE CONSTRUCTION PHASE OF THE PROJECT. THESE MEASURES WILL BE INSTALLED AND MAINTAINED THROUGHOUT THE CONSTRUCTION PHASE OF THE PROJECT.
- ALL EROSION CONTROL MEASURES SHALL BE INSTALLED AND MAINTAINED THROUGHOUT THE CONSTRUCTION PHASE OF THE PROJECT. THESE MEASURES WILL BE INSTALLED AND MAINTAINED THROUGHOUT THE CONSTRUCTION PHASE OF THE PROJECT.
- ALL EROSION CONTROL MEASURES SHALL BE INSTALLED AND MAINTAINED THROUGHOUT THE CONSTRUCTION PHASE OF THE PROJECT. THESE MEASURES WILL BE INSTALLED AND MAINTAINED THROUGHOUT THE CONSTRUCTION PHASE OF THE PROJECT.
- ALL EROSION CONTROL MEASURES SHALL BE INSTALLED AND MAINTAINED THROUGHOUT THE CONSTRUCTION PHASE OF THE PROJECT. THESE MEASURES WILL BE INSTALLED AND MAINTAINED THROUGHOUT THE CONSTRUCTION PHASE OF THE PROJECT.
- ALL EROSION CONTROL MEASURES SHALL BE INSTALLED AND MAINTAINED THROUGHOUT THE CONSTRUCTION PHASE OF THE PROJECT. THESE MEASURES WILL BE INSTALLED AND MAINTAINED THROUGHOUT THE CONSTRUCTION PHASE OF THE PROJECT.
- ALL EROSION CONTROL MEASURES SHALL BE INSTALLED AND MAINTAINED THROUGHOUT THE CONSTRUCTION PHASE OF THE PROJECT. THESE MEASURES WILL BE INSTALLED AND MAINTAINED THROUGHOUT THE CONSTRUCTION PHASE OF THE PROJECT.
- ALL EROSION CONTROL MEASURES SHALL BE INSTALLED AND MAINTAINED THROUGHOUT THE CONSTRUCTION PHASE OF THE PROJECT. THESE MEASURES WILL BE INSTALLED AND MAINTAINED THROUGHOUT THE CONSTRUCTION PHASE OF THE PROJECT.
- ALL EROSION CONTROL MEASURES SHALL BE INSTALLED AND MAINTAINED THROUGHOUT THE CONSTRUCTION PHASE OF THE PROJECT. THESE MEASURES WILL BE INSTALLED AND MAINTAINED THROUGHOUT THE CONSTRUCTION PHASE OF THE PROJECT.
- ALL EROSION CONTROL MEASURES SHALL BE INSTALLED AND MAINTAINED THROUGHOUT THE CONSTRUCTION PHASE OF THE PROJECT. THESE MEASURES WILL BE INSTALLED AND MAINTAINED THROUGHOUT THE CONSTRUCTION PHASE OF THE PROJECT.
- ALL EROSION CONTROL MEASURES SHALL BE INSTALLED AND MAINTAINED THROUGHOUT THE CONSTRUCTION PHASE OF THE PROJECT. THESE MEASURES WILL BE INSTALLED AND MAINTAINED THROUGHOUT THE CONSTRUCTION PHASE OF THE PROJECT.



SECTION - DUMPED RIPRAP
AS SHOWN IN U.S.L.
NOTE: A LAYER OF AN AGGREGATE FILTER BANK...
THE QUANTITY OF RIPRAP SHALL BE SIZED...
AT 1.5% OF REMOVAL OF EROSION CONTROL, MAY 1984



CONSTRUCTION ENTRANCE
AS SHOWN IN U.S.L.

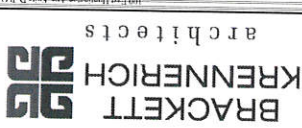


SILT FENCE
AS SHOWN IN U.S.L.
1. SLOPE SURFACE TO BE SLOTTED BEHIND...
2. SLOPE SURFACE TO BE SLOTTED BEHIND...
3. SLOPE SURFACE TO BE SLOTTED BEHIND...
4. SLOPE SURFACE TO BE SLOTTED BEHIND...

grading and erosion control plan
SCALE: 1"=40'



**CITY OF JONESBORO
JONESBORO SHOOTING
COMPLEX
PHASE 1C
Jonesboro, Arkansas**

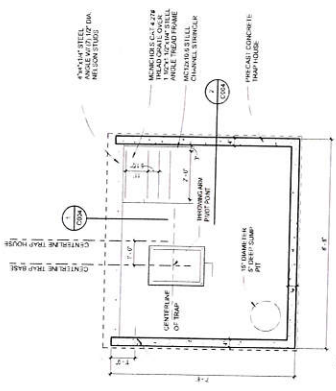


Project Schedule

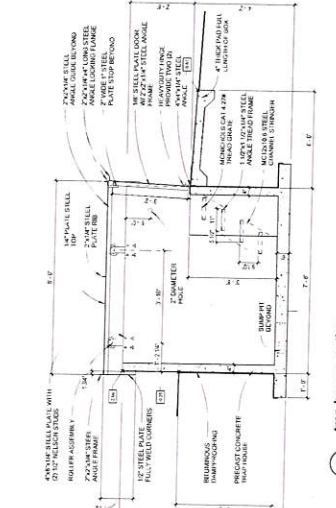
Phase 1C	10/15/21	10/15/21
Phase 2B	10/15/21	10/15/21
Phase 2D	10/15/21	10/15/21
Phase 2E	10/15/21	10/15/21



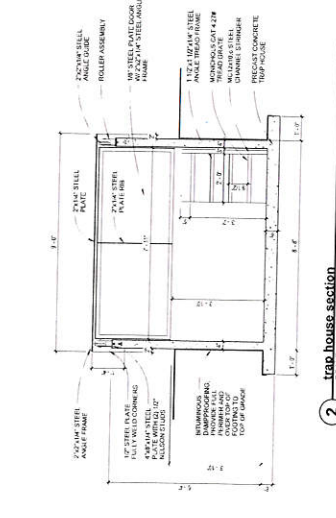
Commission Number
12015-1C
C004
REVISID 03.12.22
Date: January 17, 2025



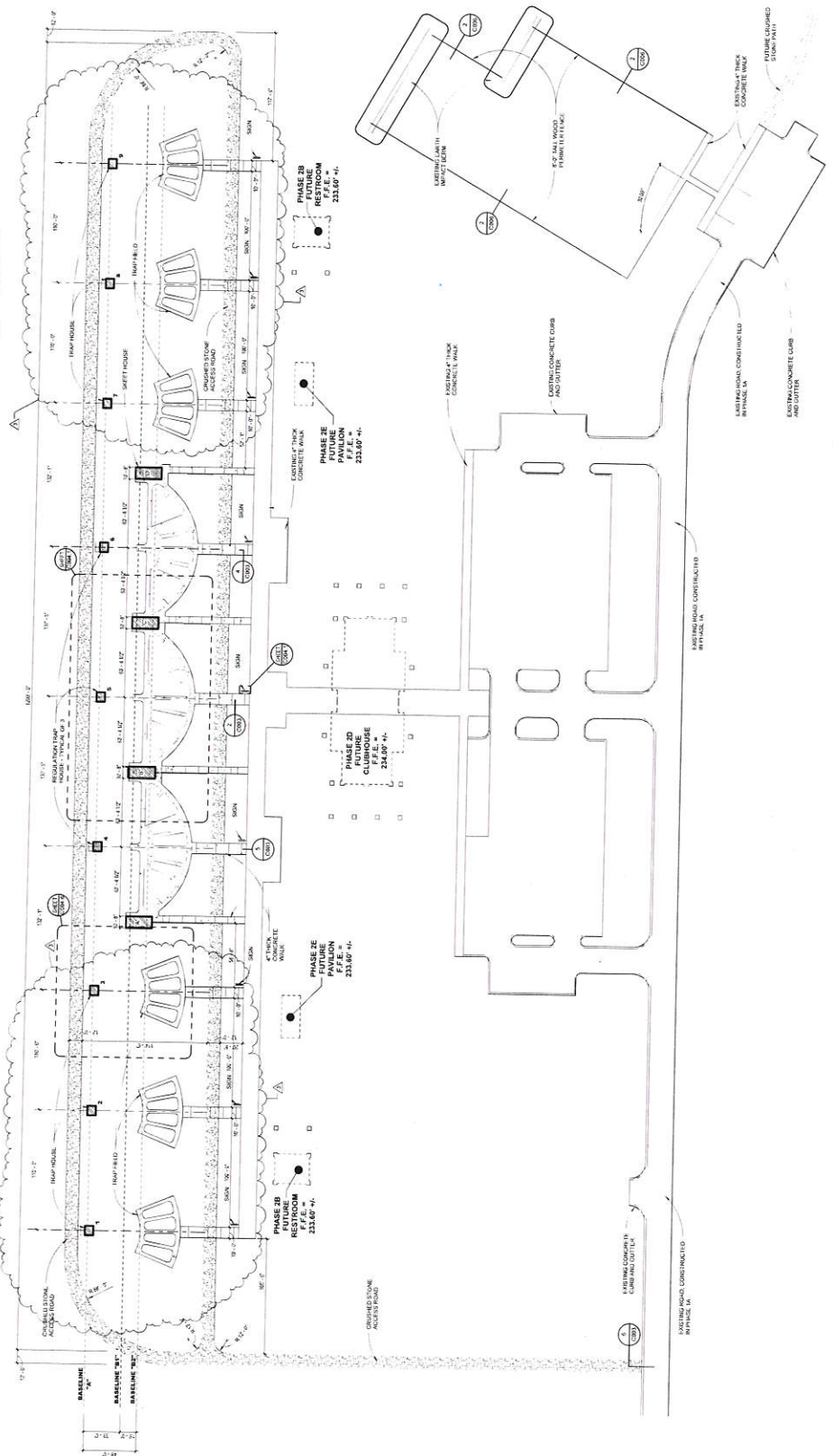
trap house plan
SCALE 1/2" = 1'-0"



trap house section
SCALE 1/2" = 1'-0"



trap house section
SCALE 1/2" = 1'-0"



trap/skeet layout site plan
SCALE 1" = 40'-0"

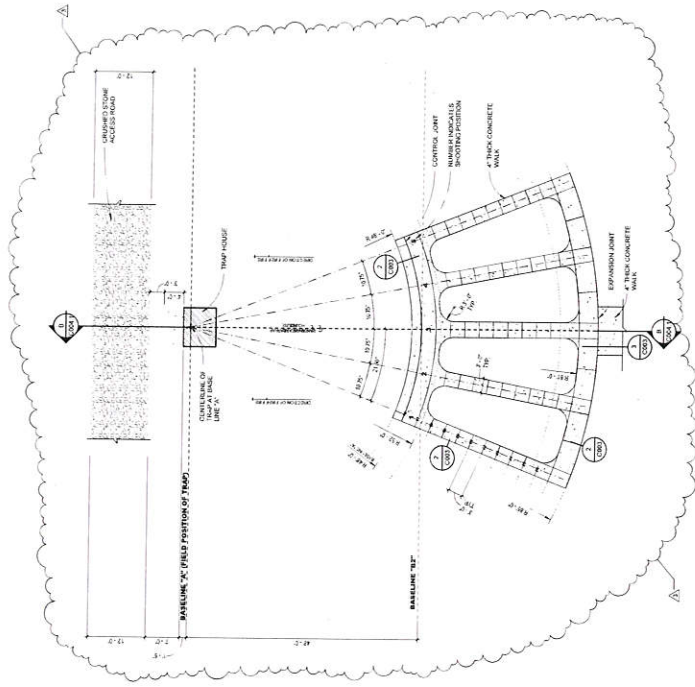
Rev	Description	Date
1	Revised Schedule	03/22/22



Commission Number
20210 - JC
C004.6
Date: March 21, 2022

CITY OF JONESBORO
JONESBORO SHOOTING
SPORTS COMPLEX
PHASE 1C
Jonesboro, Arkansas

**BRACKETT
KRENNERICH** architects



enlarged trap field plan
SCALE: 1" = 10'-0"