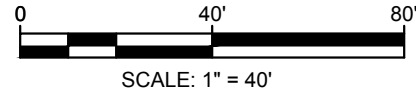
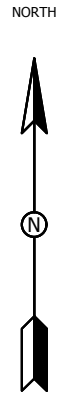


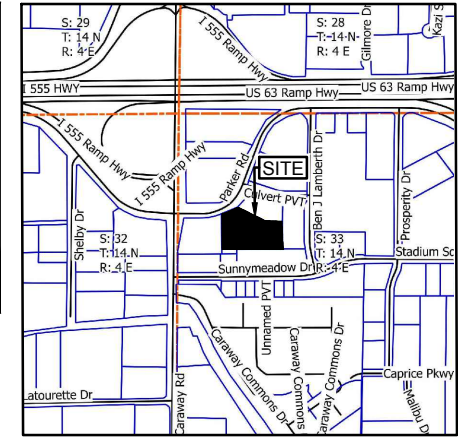
BASIS OF BEARINGS:  
 ARKANSAS STATE PLANE  
 GRID NORTH ZONE (0301)



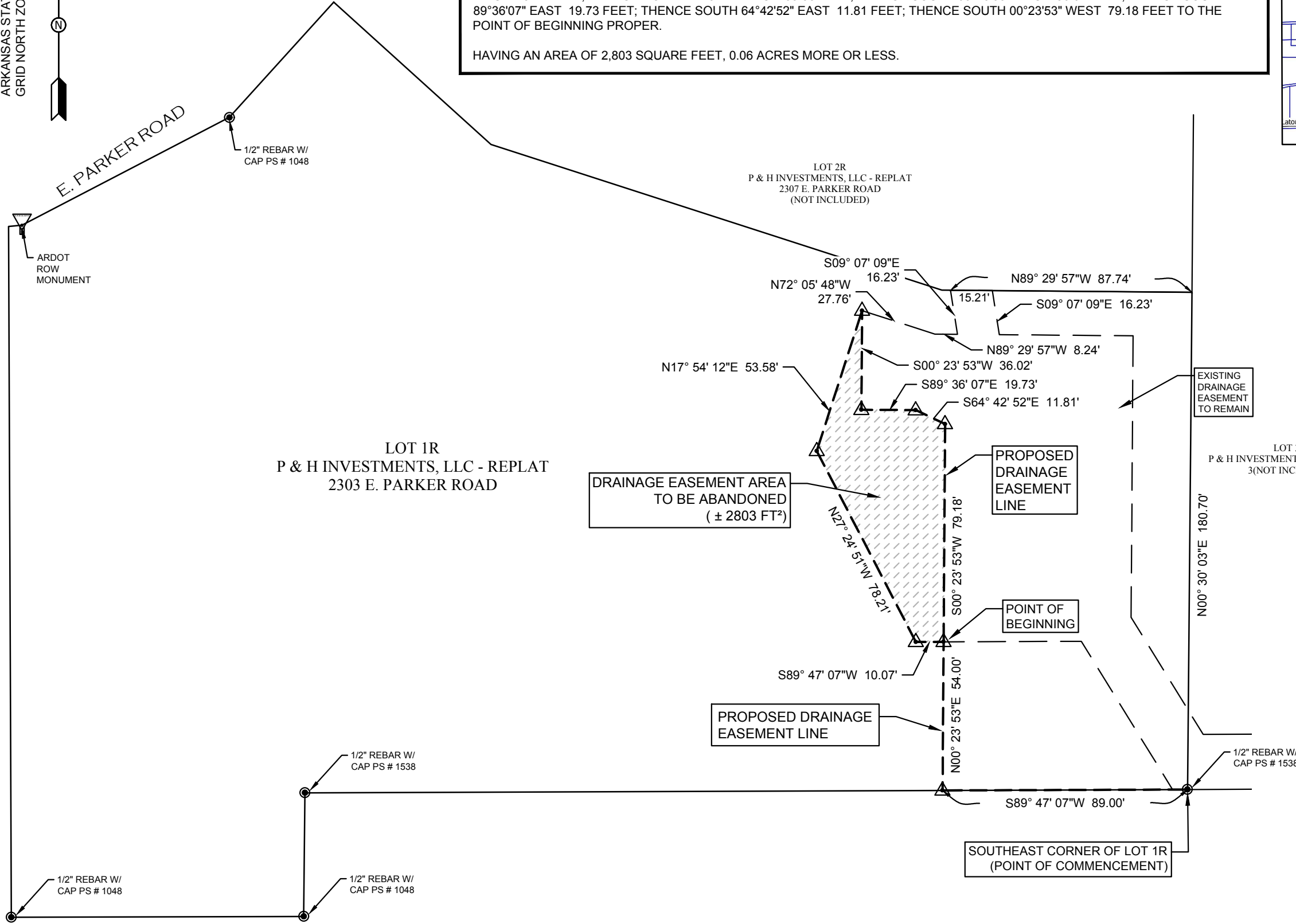
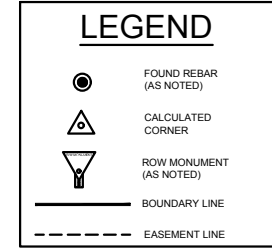
**DESCRIPTION OF EASEMENT TO BE ABANDONED:**

A PART OF LOT 1R OF P & H INVESTMENTS LLC REPLAT, RECORDED IN PLAT CABINET 'C' PAGE 283, DOCUMENT #2017R-019622, IN CIRCUIT CLERK OFFICE, CRAIGHEAD COUNTY COURTHOUSE, JONESBORO ARKANSAS, BEING MORE PARTICULARLY DESCRIBED AS FOLLOWS:  
 COMMENCING AT THE SOUTHEAST CORNER OF SAID LOT 1R THENCE NORTH 89°47'07" WEST 89.00 FEET; THENCE NORTH 00°23'53" EAST 54.00 FEET TO THE POINT OF BEGINNING; THENCE SOUTH 89°47'07" WEST 10.07 FEET; THENCE NORTH 27°24'51" WEST 78.21 FEET; THENCE NORTH 17°54'12" EAST 53.58 FEET; THENCE SOUTH 00°23'53" WEST 36.02 FEET; THENCE SOUTH 89°36'07" EAST 19.73 FEET; THENCE SOUTH 64°42'52" EAST 11.81 FEET; THENCE SOUTH 00°23'53" WEST 79.18 FEET TO THE POINT OF BEGINNING PROPER.

HAVING AN AREA OF 2,803 SQUARE FEET, 0.06 ACRES MORE OR LESS.



VICINITY MAP  
(NOT TO SCALE)



**DRAINAGE EASEMENT ABANDONMENT PLAT**  
**LOT 1R OF P & H INVESTMENTS, LLC**  
 2303 E. PARKER ROAD  
 JONESBORO, CRAIGHEAD COUNTY, ARKANSAS  
 CLIENT: ONSTEAD PROPERTIES, LLC

DATE: 12/01/2020  
 REV:

DRAWN BY: BGW



**BRANDON WOOD, P.E., P.S.**  
 ENGINEERING & SURVEYING  
 112 CR 7625  
 BROOKLAND, AR 72417  
 PH: (870) 535-7507  
 FAX: (870) 535-7507  
 BW@WOODENGINEERING.COM  
 WWW.BWOODENGINEERING.COM

